

westKowloon

西九文化區

西九文化區與鄰近地區的融合和連接

**Integration and connectivity of the West Kowloon
Cultural District with its neighbouring districts**

24/11/2015

目的: Purpose:

1

交通營運計劃研究的中期建議
Interim Recommendations of the Traffic
Operation Plan Study

2

與鄰近地區連接的運輸基建工程項目的最新進展
Progress update of transport infrastructure
projects linking WKCD with its neighbouring
districts

目的：
Purpose:

- 1** 交通營運計劃研究的中期建議
Interim Recommendations of the
Traffic Operation Plan Study
- 2** 與鄰近地區連接的運輸基建工程項目的最新進展
Progress update of transport infrastructure
projects linking WKCD with its neighbouring
districts

公共運輸規劃及營運

Public Transport Planning and Operation



現時西九文化區鄰近的公共運輸服務

Existing Public Transport Services in the vicinity of WKCD



公共運輸服務覆蓋範圍

Coverage of Existing Public Transport Services



現有公共運輸路線覆蓋全港大部分住宅區,並可直達或接駁港鐵往返西九文化區與其他地區。

Existing public transport routes offer territory-wide coverage for most of the residential areas providing direct or feeder services to MTR stations linking WKCD and other districts.



短期公共運輸服務 (綠色專線小巴77M)

Short Term Public Transport Service (GMB 77M)



Legend 圖例

- Existing NB Routing ————
- 現時北行走線
- Existing SB Routing ————
- 現時南行走線
- Proposed Extension - - - - -
- 建議延伸路段

待柯士甸道西的地下行車隧道通車和與其他相關組織協商同意以後,綠色專線小巴的走線會有可能作調整
 GMB route is subject to changes after completion of Austin Road West Underpass and agreement among parties concerned

於本港進行的電動巴士試驗

Electric Buses under Trial in HK

- 環保署綠色運輸試驗基金
EPD's Pilot Green Transport Fund
- 例子包括: Examples include:
 - 電動巴士作穿梭巴士
Electric Buses as shuttle service
 - 校園的電動穿梭巴士
Electric Shuttle Buses on Campus
 - 愉景灣居民穿梭服務的電動巴士
Electric Buses for Resident's Service in Discovery Bay



環保運輸系統 (研究中)

Environmental-friendly Transport System (under study)

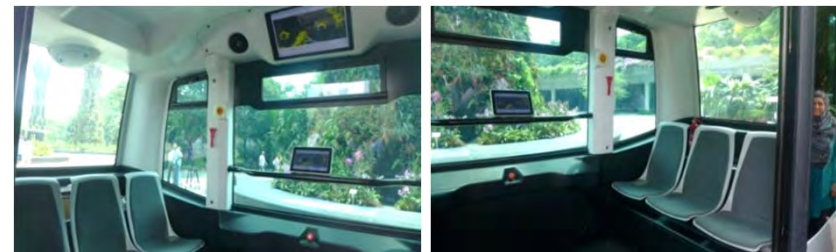
- 按需求以點到點服務的模式運作
Point-to-point on demand service
- 接駁東面的戲曲中心及西面的公園
Connect the Xiqu Centre in the east and the Park in the west
- 載客量較低及速度較慢以確保安全
Operate with low-capacity and low-speed to enhance safety



海外的電動無人駕駛運輸系統

Overseas Electric Driverless Transport System

- 新加坡濱海灣花園
Gardens by the Bay, Singapore
- 在花園內的行人道上行駛
Runs along footways within the Gardens
- 每車可容納約10人，並提供無障礙輪椅上落斜台
Each car accommodates about 10 people and is wheelchair-accessible



私家車及旅遊車停泊設施

Private Car and Coach Parking Provision



私家車泊位供應

Private Car Parking Provision

2031年私家車泊位要求 Car Parking Requirement in 2031

發展項目種類 Type of Development	車位共用前 Before Sharing	車位共用後 After Sharing (包括高鐵辦公樓車位 incl. WKT Office)
核心文化藝術設施 CACF	1,290	1,095
其他文化藝術設施 OACF	360	140
零售／餐飲／消閒設施 RDE	460	460
辦公室 Office	470	180
住宅 Residential	360	360
酒店 Hotel	10	10
合共 Total	2,940	2,245*

共用
Sharable

不共用
Not Sharable

* 泊位設施共用後可減少約690 個車位
Reduction of about 690 spaces after sharing

考慮中的車輛停泊管理系統科技

Car Park Management System Technologies under Consideration

- 車牌識別系統
Licence Plate Recognition System
- 長距離無線射頻識別技術
Long Distance Radio-frequency Identification Technology



考慮中的車輛停泊管理系統科技

Car Park Management System Technologies under Consideration

- 停車場指引和搜尋系統
Car Park Guidance and Searching System
- 可變訊息指示牌
Variable Message Signs
- 停車位預約系統
Car Park Booking System



The image shows a variable message sign (VMS) for West Kowloon, displaying parking location and lots available. It includes a blue 'P' icon and the text 'westKowloon 西九文化區'.

Parking Location	Lots Available
ZONE 2B	FULL
ZONE 2C	8
ZONE 3A	4
ZONE 3B	20

旅遊車停泊調查結果

Coach Parking Surveys Findings

- 油尖旺區缺乏旅遊車停泊地點一直是主要交通問題
Lack of coach parking in Yau Tsim Mong district has been a key traffic issue
- 渡華路旅遊車停泊處的使用率
Utilization rate of the To Wah Road Coach Park
 - 黃昏繁忙時間佔用率約有80%
About 80% utilization rate at evening peak hours
 - 大部分時間使用率少於50%
Utilization rate less than 50% during the rest of the day
- 問卷調查結果顯示
Interview survey results indicated that:
 - 若遠離上落客地點, 多於70%的旅遊巴士司機不會選用尖沙咀區外的停泊點
Over 70% of the surveyed drivers would not use the coach parking spaces outside the Tsim Sha Tsui operation area if they are far away from the picking up points

往返尖沙咀及渡華路旅遊車停車場的路線

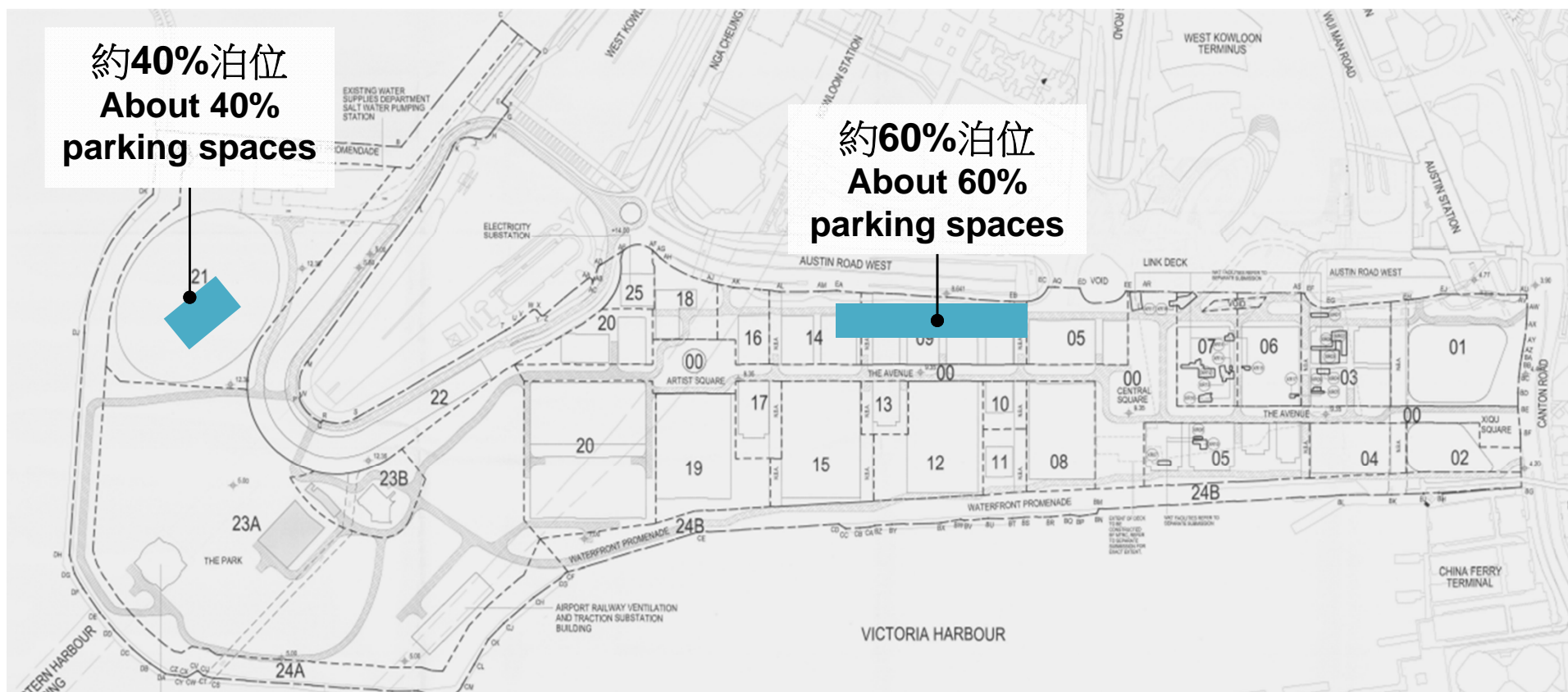
Travel Route between TST & To Wah Road Coach Parking Area



旅遊車停泊設施

Coach Parking Provision

- 估計需求: 22個旅遊車停車位。設計:約40個停車位。
Forecast Demand: 22 coach parking spaces. Design: about 40 spaces



水路運輸方案

Marine Transport Options



西九文化區內現有的公眾登岸梯級

Existing Public Landing Steps within WKCD



美化公眾登岸梯級

Landing Steps Beautification



(只作參考 Reference only)



(只作參考 Reference only)

西九文化區海濱的水路交通

Marine Transport along WKCD Seafront

- 建議的水路交通以服務西九文化區
Proposed Marine Transport Services to serve WKCD
 1. 維港觀光船
Water Tour Service
 2. 舉辦大型活動時的渡輪服務
Ferry Services for Major Event

水上觀光船服務

Water Tour Service

- 接觸水上觀光團營辦商以探討延伸其服務或開發新的航線至西九文化區
To approach water tour service operators and explore extending their existing service or introducing a new route to WKCD
- 希望提供每天兩次服務(黃昏及晚上)
Hope to provide two departures per day (evening and night time)



舉辦大型活動時的渡輪服務

Ferry Services for Major Events

- 考慮於舉辦大型活動時提供渡輪服務
Consider provision of ferry services for major events



- 檢討載客量,上落客點和乘客模式以計劃未來營運策略及評估財政承擔的能力
Review patronage, pick-up points and passenger patterns to facilitate determination of future operation strategy and assessment of financial viability

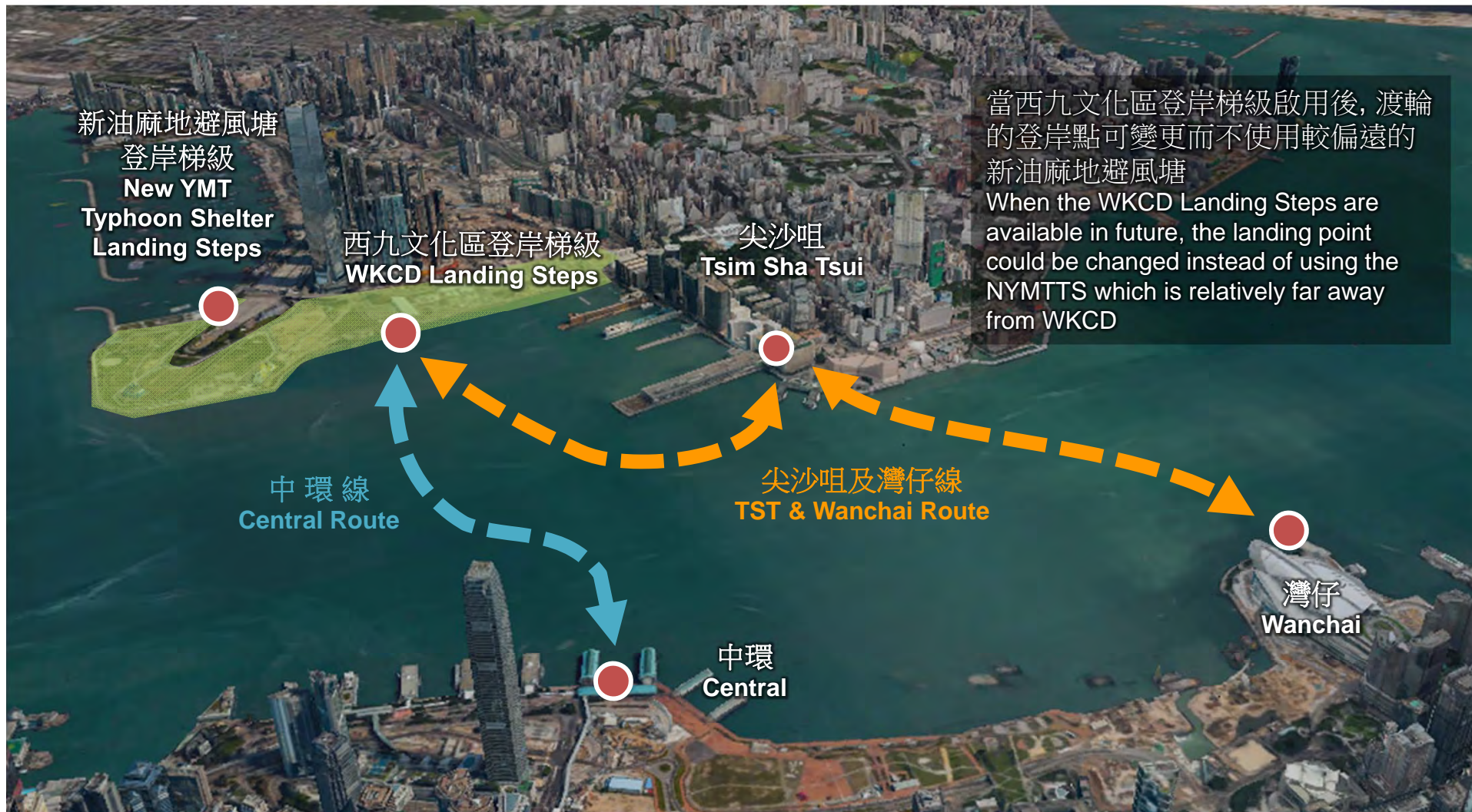
2014年舉辦「自由野」時的渡輪服務 Ferry Service for Freespace Fest 2014



westKowloon
西九文化區

舉辦大型項目時的渡輪服務建議

Proposed Ferry Services for Event Day



當西九文化區登岸梯級啟用後，渡輪的登岸點可變更而不使用較偏遠的新油麻地避風塘
When the WKCD Landing Steps are available in future, the landing point could be changed instead of using the NYMTTS which is relatively far away from WKCD

目的: Purpose:

1

交通營運計劃研究的中期建議
Interim Recommendations of the Traffic
Operation Plan Study

2

與鄰近地區連接的運輸基建工程
項目的最新進展
Progress update of transport
infrastructure projects linking WKCD
with its neighbouring districts

由鄰近地區前往西九的道路改善工程

Road Improvement Works Connecting Neighbouring Districts to WKCD



Scheme 3

Proposed single lane at-grade road connecting West Kowloon Highway southbound to elevated Nga Cheung Road
 擬建地面單線行車道連接西九龍公路南行方向至雅翔道高架路段



Scheme 2
計劃 2

計劃 2
SCHEME 2

Proposed single lane elevated road connecting elevated Nga Cheung Road to toll plaza of WHC
 擬建高架單線行車道連接雅翔道高架路段至西區海底隧道收費廣場



Scheme 1
計劃 1

Proposed single lane elevated road connecting Hoi Po Road to West Kowloon Highway northbound
 擬建高架單線行車道連接海寶路至西九龍公路北行方向



Depressed Austin Road West and Lin Cheung Road junction
 低於地面的柯士甸道西與連翔道交匯處

Proposed Widening of the Canton Road/Austin Road West Junction
 擬擴建的廣東道/柯士甸道西路口

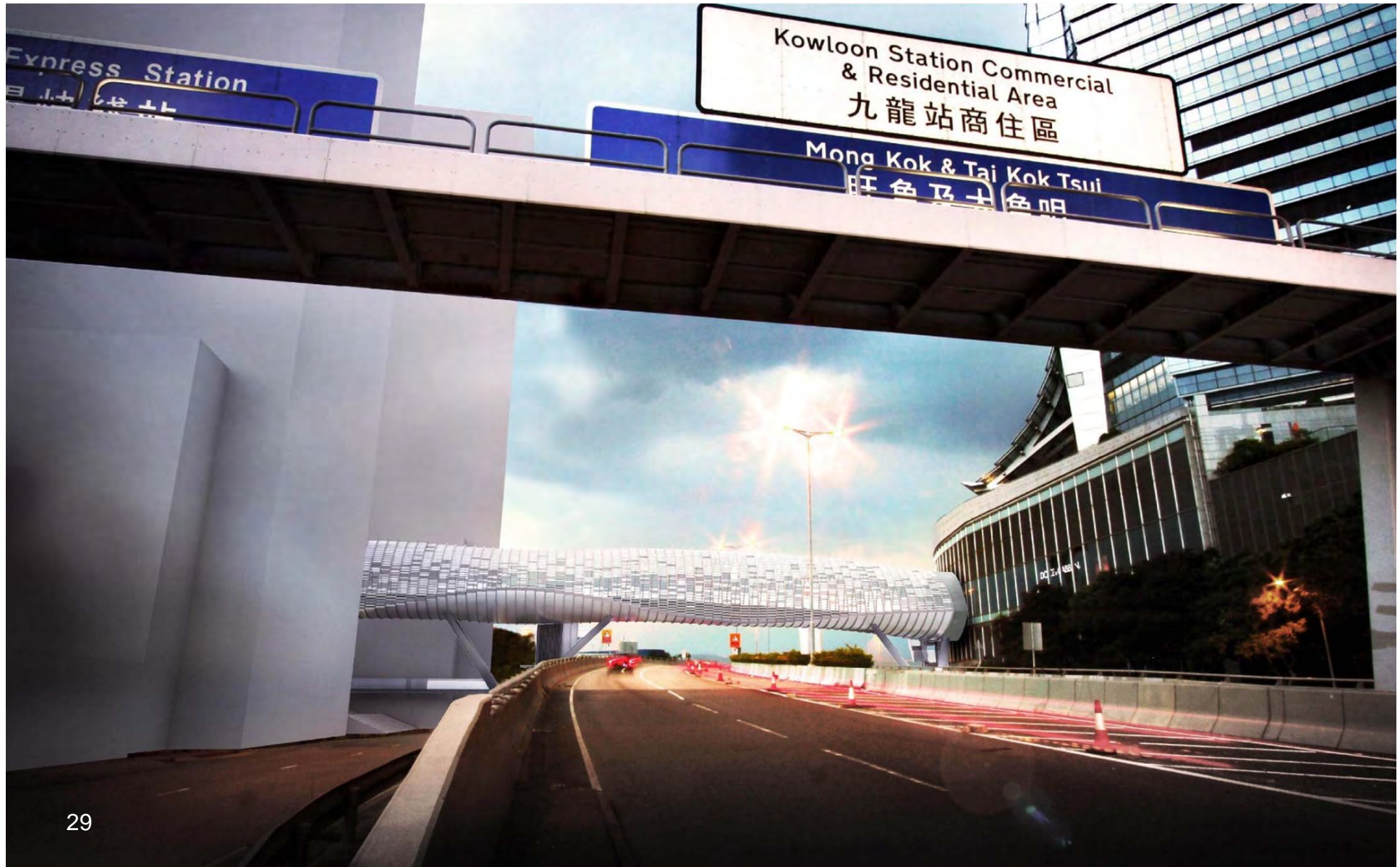
藝術廣場行人天橋大綱設計圖

Schematic Design of the Artist Square Bridge



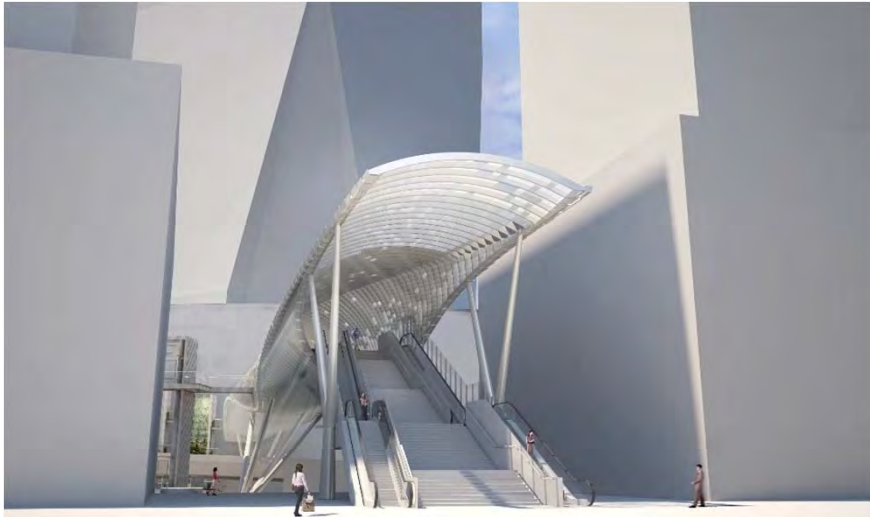
藝術廣場行人天橋大綱設計圖

Schematic Design of the Artist Square Bridge



藝術廣場行人天橋大綱設計圖

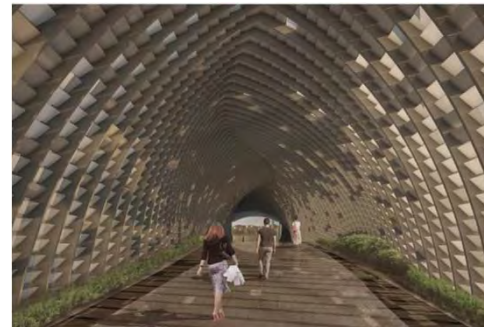
Schematic Design of the Artist Square Bridge



藝術廣場行人天橋大綱設計圖

Schematic Design of the Artist Square Bridge

- 淨寬7.5 米
7.5m clear width
- 自然通風
Nature Ventilation
- 設有兩道扶手電梯及升降機
2 nos. of escalators and lifts
- 2019年起分階段完成
Completion in phases starting from 2019



現有柯士甸道西行人隧道優化工程

Upgrading Works for the Existing Austin Road West Subway

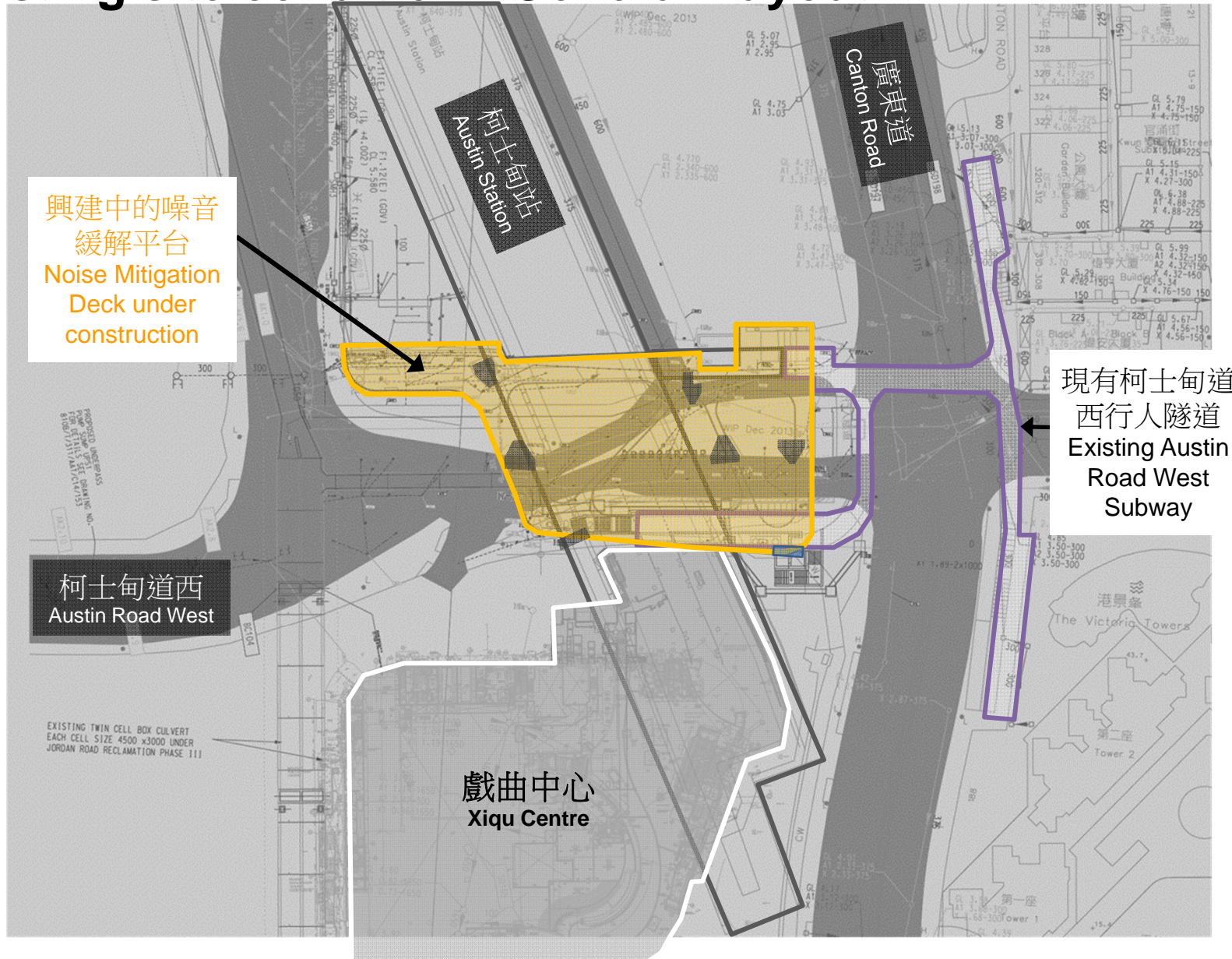


現有柯士甸道西行人隧道 Existing Austin Road West Subway Connection



現時情況 - 總體佈局

Existing site condition - General Layout

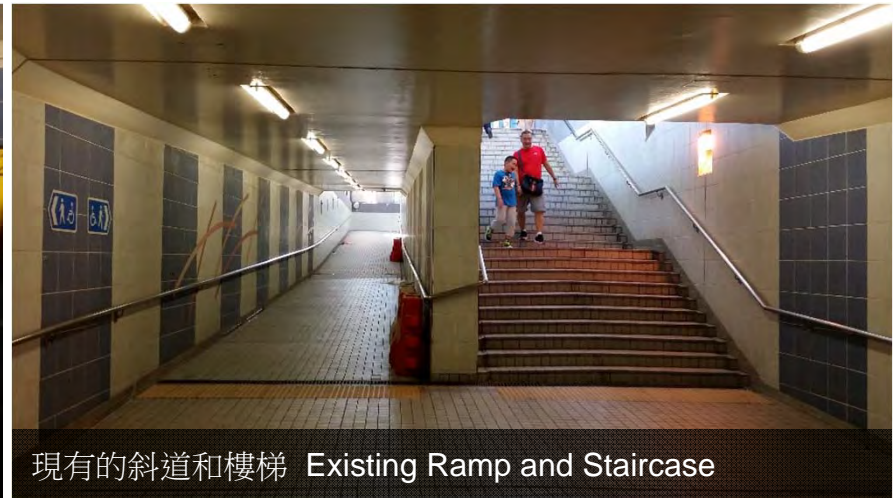


現有行人隧道情況 - 相片

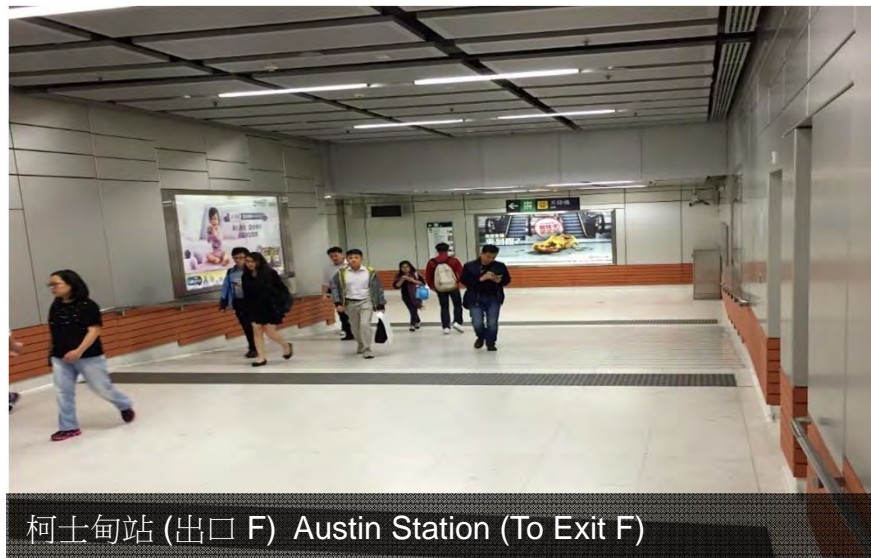
Existing Pedestrian Subway Condition - Photos



右轉到戲曲中心 Turn Right to go to Xiqu Centre



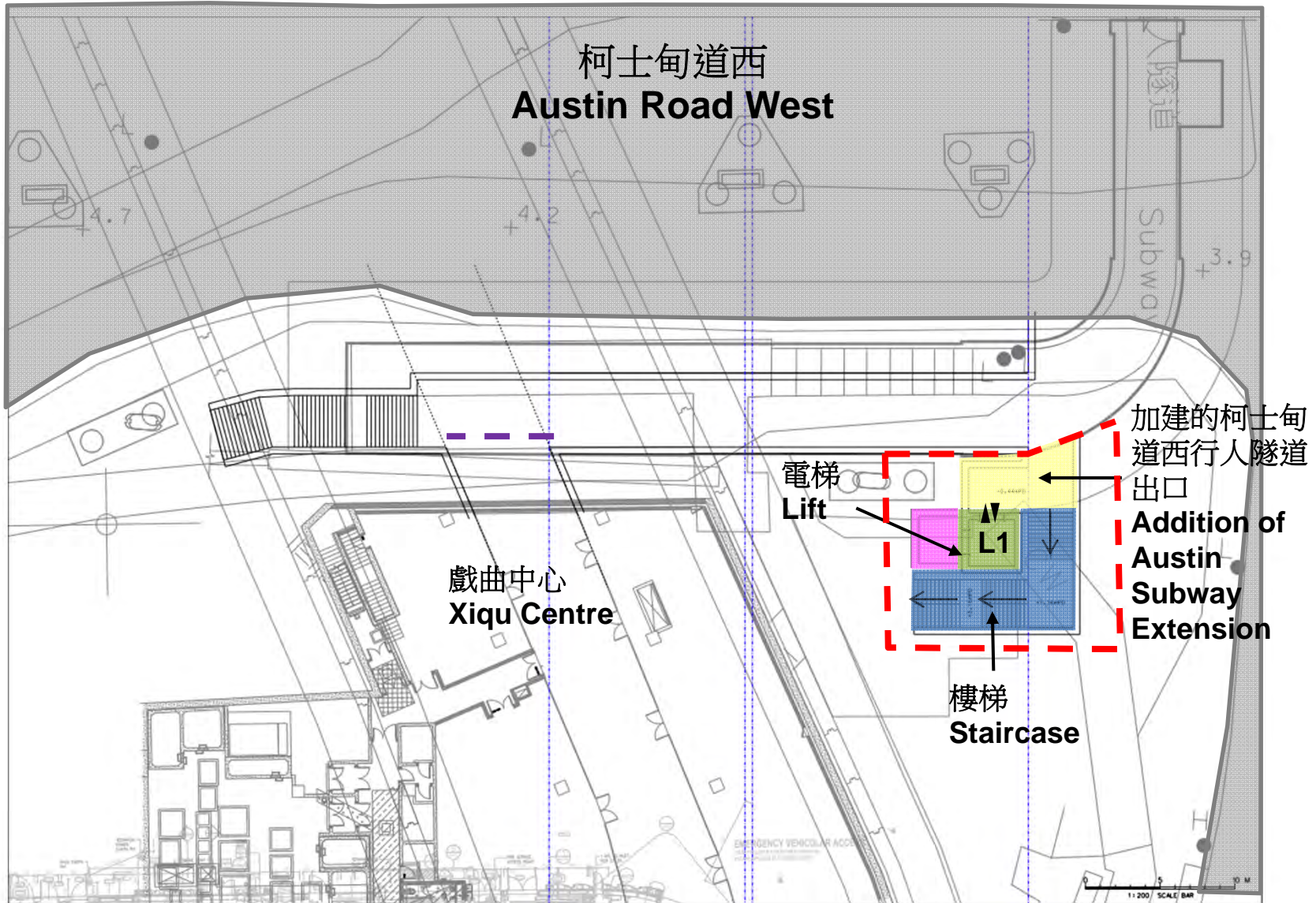
現有的斜道和樓梯 Existing Ramp and Staircase



柯士甸站 (出口 F) Austin Station (To Exit F)

現有行人隧道的優化工程

Proposed Upgrading Works for the Existing Subway



westKowloon

西九文化區

謝謝

THANK YOU