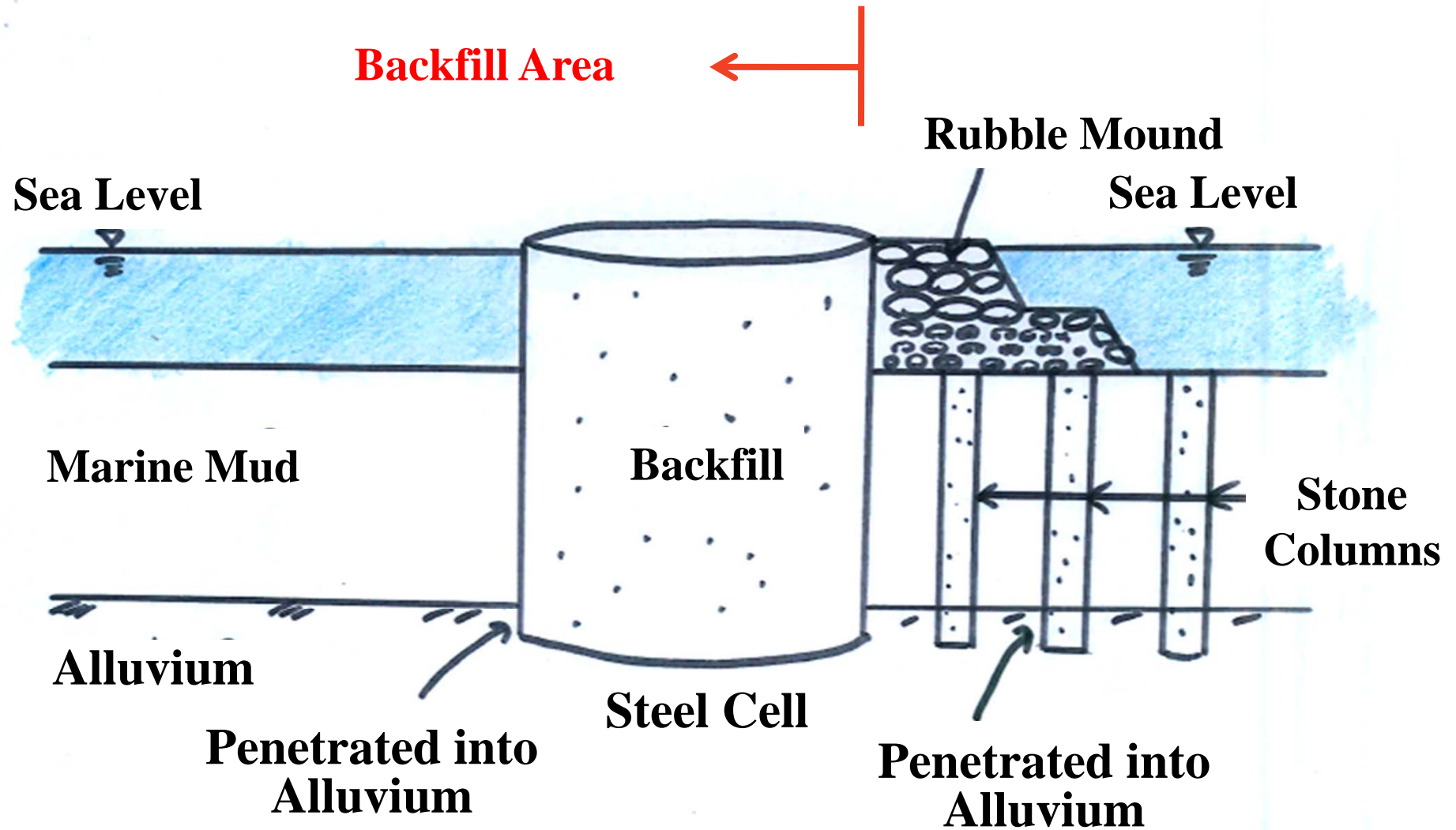


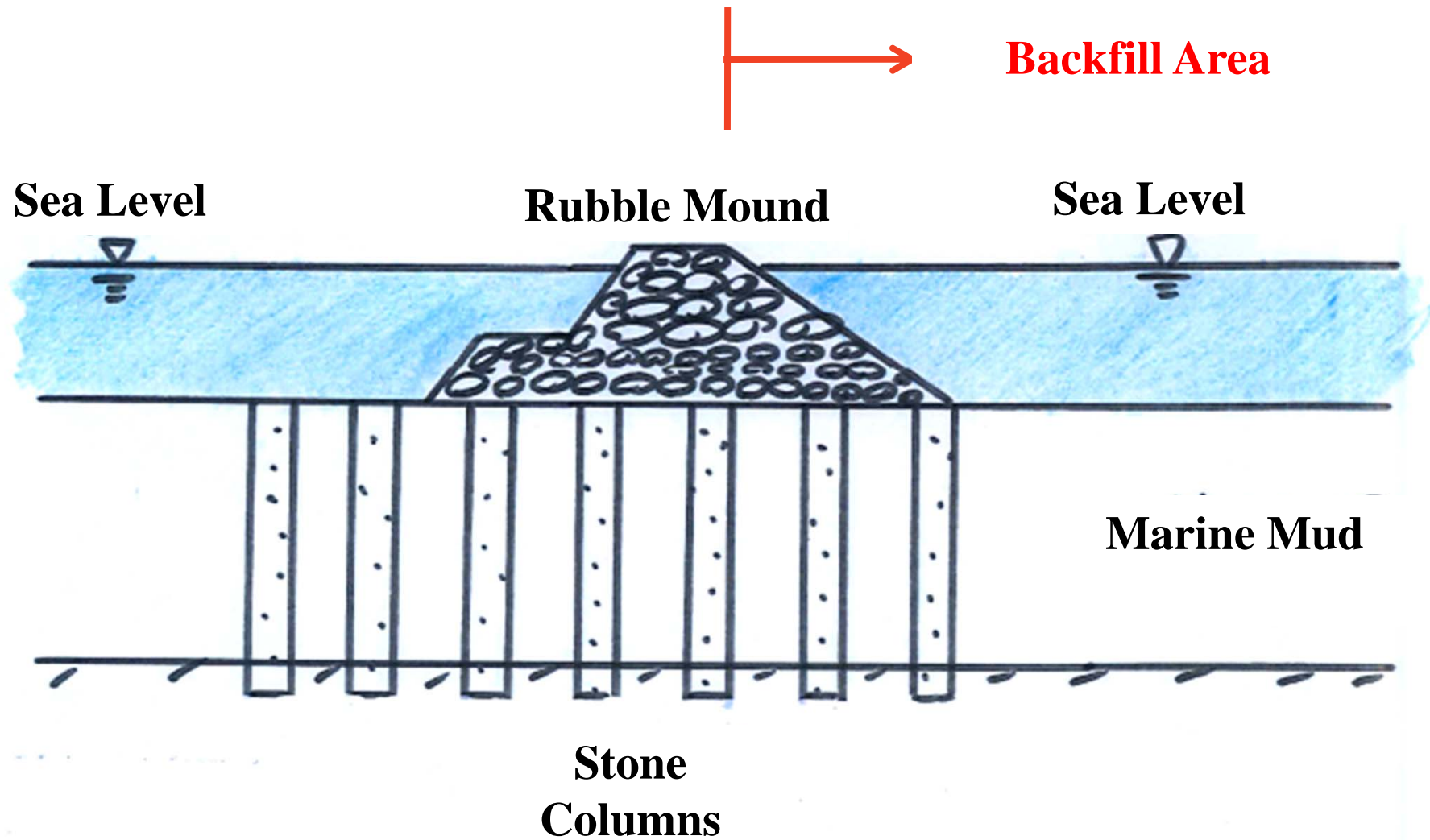
**Hong Kong – Zhuhai – Macao Bridge**  
**Hong Kong Boundary Crossing Facilities – Reclamation Works**



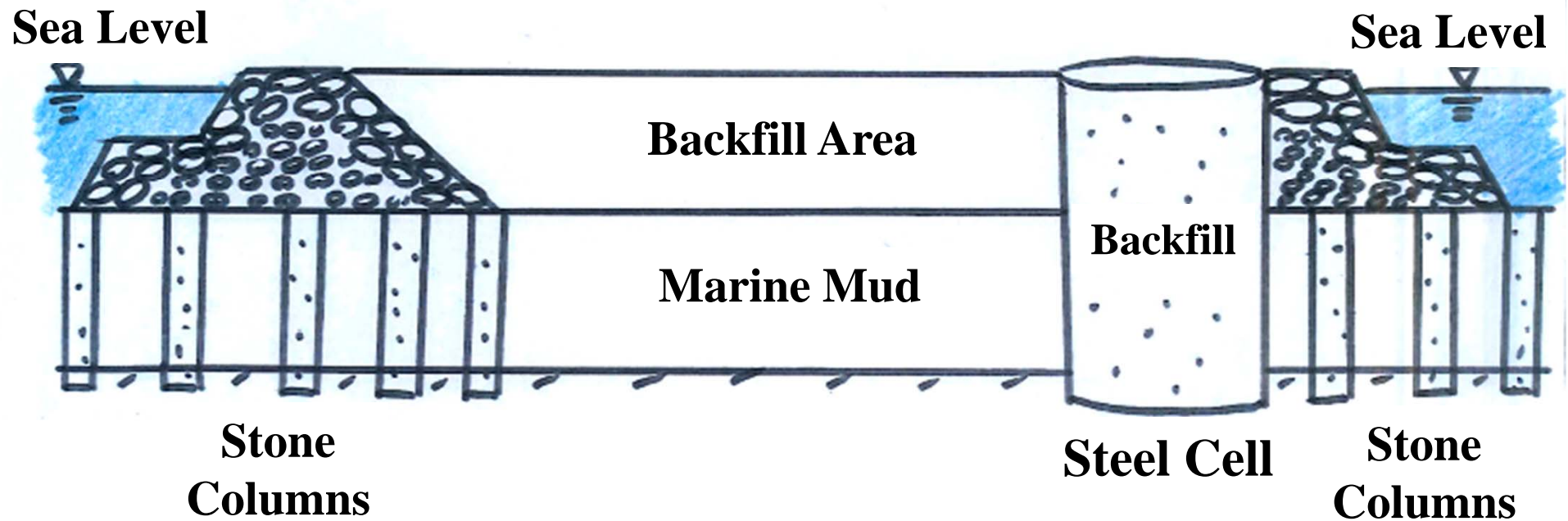
# Non-dredged Seawall with Steel Cells and Rubble Mound



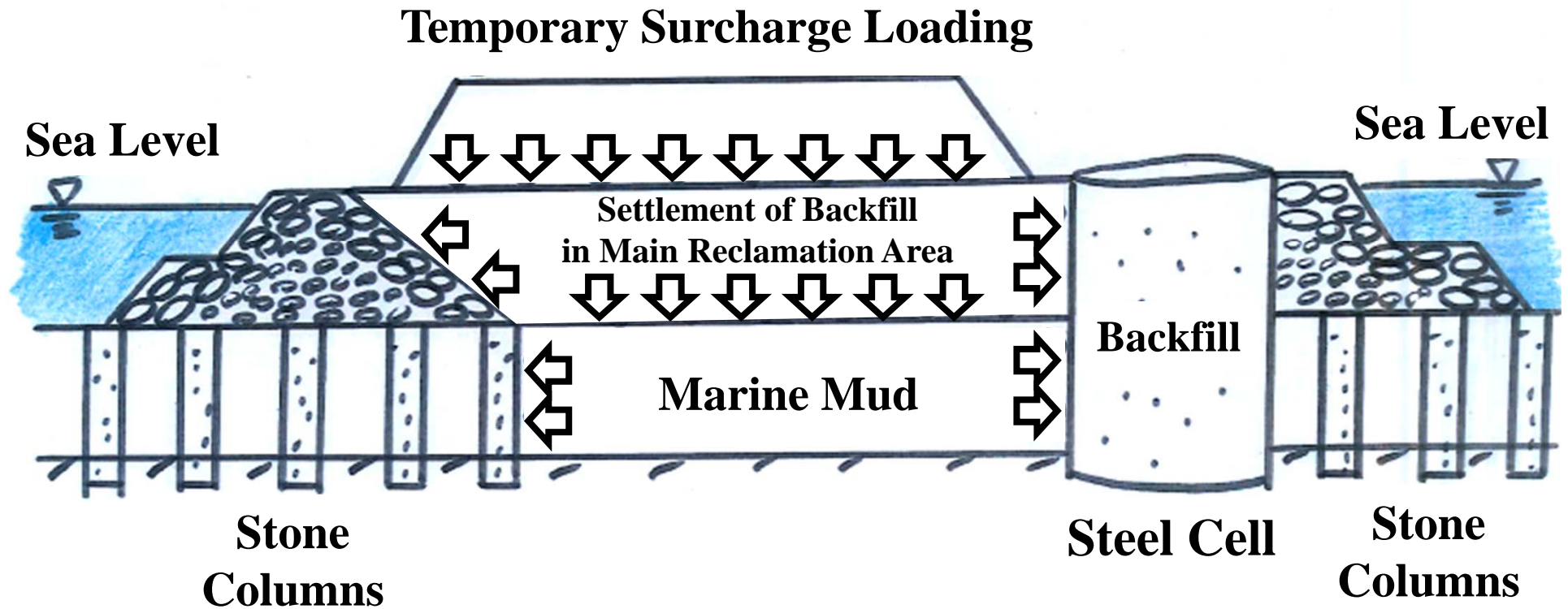
# Non-dredged Rubble Mound Seawall



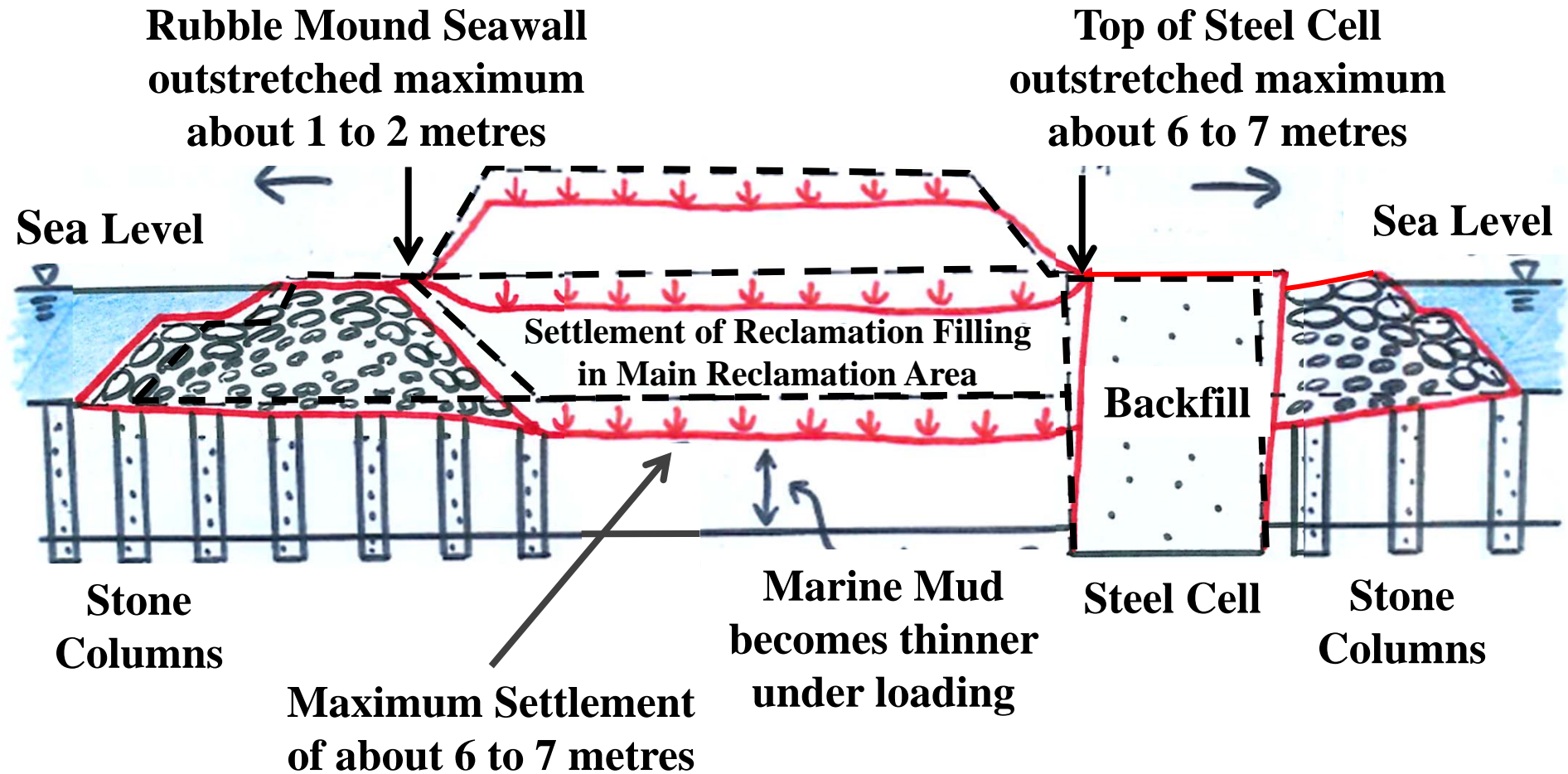
# Backfilling behind Seawall to form Land



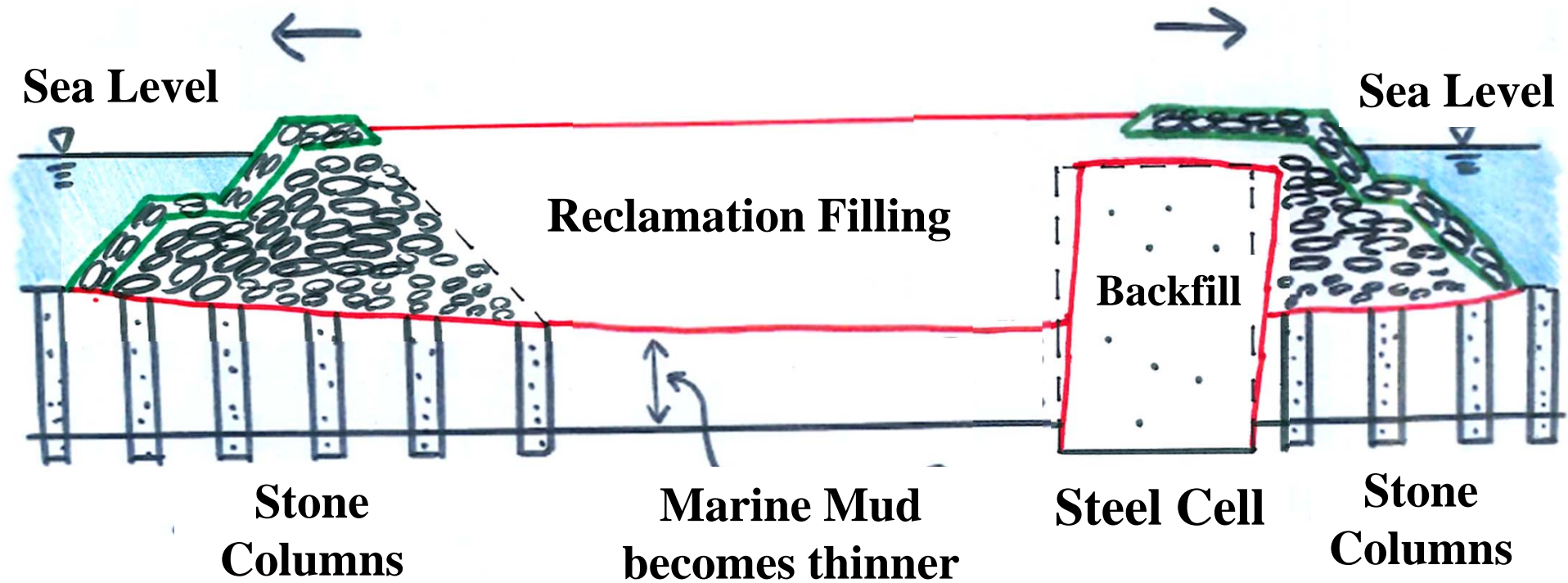
# Load surcharge to expedite settlement



# Settlement of Marine Mud under Loading

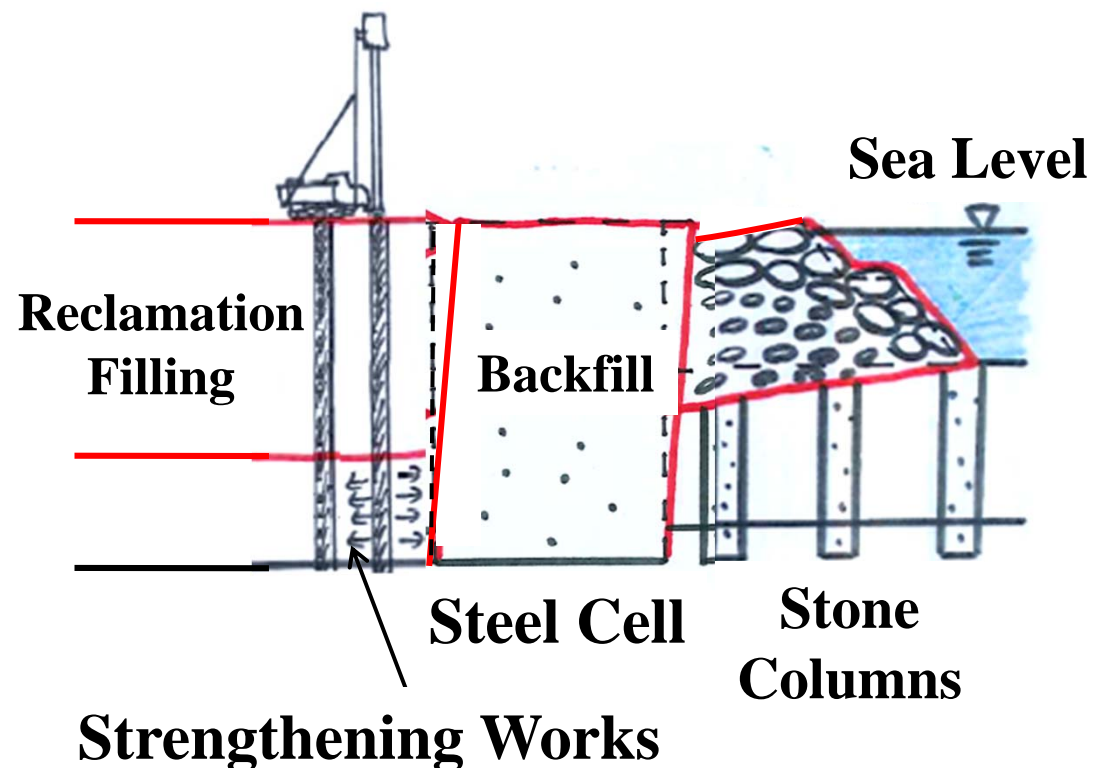


# Rectification of Rock Fill and Seawall External Profile



## Strengthening Works

- There were occasions that the contractor had not carried out the reclamation works in full compliance with the construction sequence required under the contract. The contractor had, at his own cost, carried out the required strengthening works.
- The contractor completed the strengthening works in July this year.





## **Conclusion**

- **During the reclamation stage, settlement of the reclaimed land and outward stretching of the seawall and the adjacent land will occur. However, the artificial island will not move laterally.**
- **Settlement and outstretching is expected and normal.**
- **The consultant has carried out detailed assessment and concluded that the seawall is structurally safe.**

## Completion by end 2017 - Meeting Requirements for Commissioning

### **Works for the Passenger Clearance Building (PCB):**

- **Over 90% of the PCB piles have been completed.  
The construction works of its pile caps and basement have commenced.**



## Completion by end 2017 - Meeting Requirements for Commissioning

### **Works for Vehicle Clearance Plazas, Ancillary Buildings and Bridges:**

- **About 70% of pre-drilling works for piles have been completed.**
- **Construction of bridges piling has commenced, bridge deck construction has just commenced.**
- **Foundation works for Weigh Station and Transformer Room have been completed and the external structural works have commenced.**



**Construction of the bridge deck has just commenced**



**The external structural works of the Weigh Station have commenced**

## Financial implications due to delay in handing over of sites from reclamation works

- **Mechanism has been included in the Superstructure Works Contracts to contain the amount of compensation**
- **Contractors were required to quote a daily rate for compensation, but cannot make further monetary claims**

## Measures to adopt in case if the increase in Approved Project Estimate is not approved by LegCo

- **There are conditions in Superstructure Contracts to enable the excision of part of the works. These conditions are time-barred (will gradually expire from December 2015 onward).**
- **If those facilities to be excised are re-tendered for construction, re-tendering exercise will cause abortive cost.**
- **Since those facilities to be excised will have to be constructed after the commissioning of the Hong Kong Boundary Crossing Facilities (HKBCF), this will increase the difficulties in construction and will lead to a higher cost.**
- **Moreover, reduction of part of the facilities at the HKBCF will lead to longer waiting time for passengers and bring inconvenience to the public upon commissioning.**

**- End -**