



中華人民共和國香港特別行政區政府總部食物及衛生局

Food and Health Bureau, Government Secretariat
The Government of the Hong Kong Special Administrative Region
The People's Republic of China

Our Ref : FHB/H(P)/34/94/1

Tel : 3509 8973

Your Ref :

Fax : 2521 0132

22 April 2016

Ms Sharon Chung
Clerk to Public Works Subcommittee
Public Works Subcommittee
Legislative Council Complex
1 Legislative Council Road
Central
(Fax: 2978 7569)

Dear Ms Chung,

PWSC(2016-17)1 –
81MM –Redevelopment of Kwai Chung Hospital
13MD –Redevelopment of Kwong Wah Hospital
3ML – Expansion of Haven of Hope Hospital

In considering the paper on 81MM – Redevelopment of Kwai Chung Hospital, 13MD – Redevelopment of Kwong Wah Hospital (KWH) and 3ML – Expansion of Haven of Hope Hospital (PWSC(2016-17)1) at the Public Works Subcommittee (PWSC) meeting on 13 April 2016, Members requested the Administration to provide supplementary information as set out below. Having consulted the Hospital Authority (HA) and the Architectural Services Department (ASD), our response is as follows.


(a) the preliminary outline design and blueprint for the block proposed to be constructed under the KWH redevelopment project and the current estimated construction cost

2. The preliminary outline design and preliminary blueprint for the block proposed to be constructed under the KWH redevelopment project are attached at Annex for Members' reference. The HA has preliminarily estimated that the construction cost of the KWH redevelopment project is in the order of \$23 billion (in money-of-the-day prices).

(b) documents to be submitted by the Government to elucidate whether there will be an assessment before commencement of any future hospital redevelopment project to see if the proposed foundation can accommodate a potential future need of expansion of the building concerned, and whether this practice will be included in the basic planning for future hospital redevelopment projects; if "no", please provide the reason(s).

3. In carrying out the preliminary planning of hospital projects in future, the HA will, having regard to the circumstances and needs of individual hospitals and in the light of professional advice and technical feasibility study findings provided by the Architectural Services Department, consider whether the proposed foundation of a building needs to be designed to support loads that allow for future expansion.

Yours sincerely,



(Miss Angel Tong)
for Secretary for Food and Health

c.c. Chief Executive of the Hospital Authority

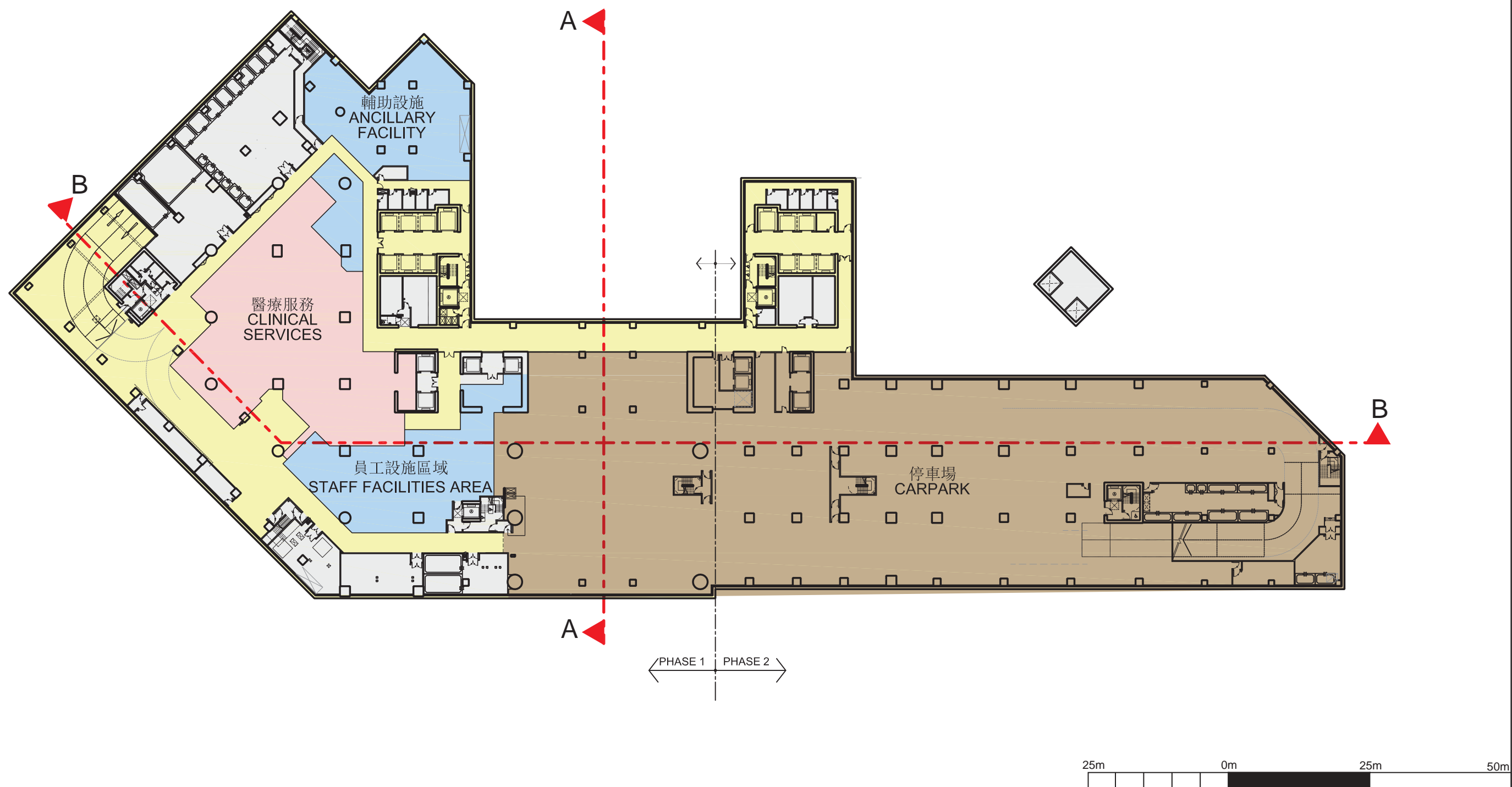
(Attn. : Ms Emily Chan, Senior Manager (Boards & Support)

(Fax : 2895 0937)

c.c. Director of Architectural Services

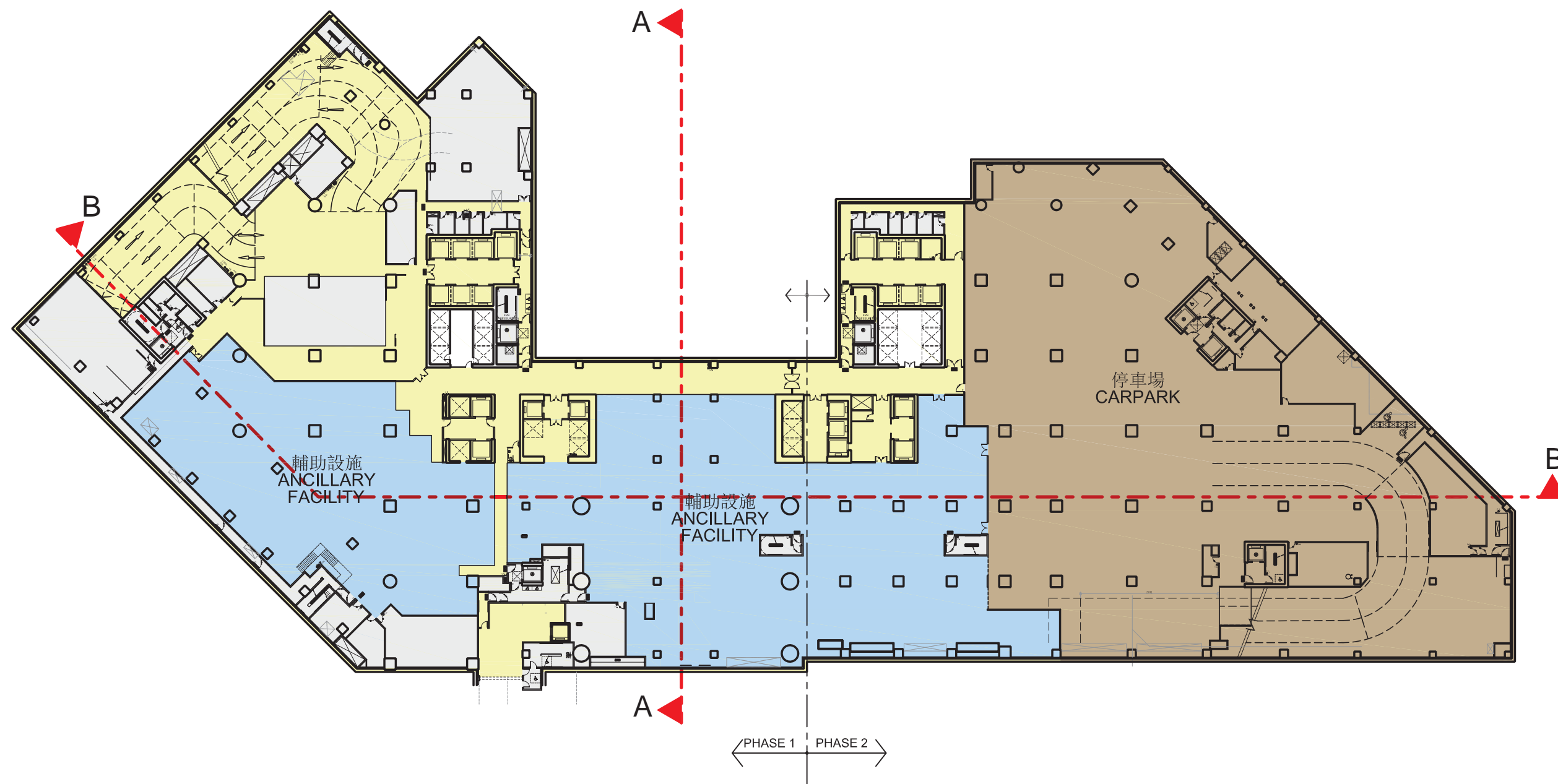
(Attn. : Miss Isabel Tam, Chief Executive Officer/Projects)

(Fax : 2801 4706)



圖例 LEGENDS

 公共區域 PUBLIC AREA	 醫療服務 CLINICAL SERVICES	 輔助設施 / 員工設施 ANCILLARY FACILITY / STAFF FACILITY	 機電房 PLANT ROOM	 停車場 CARPARK
---	---	---	---	--



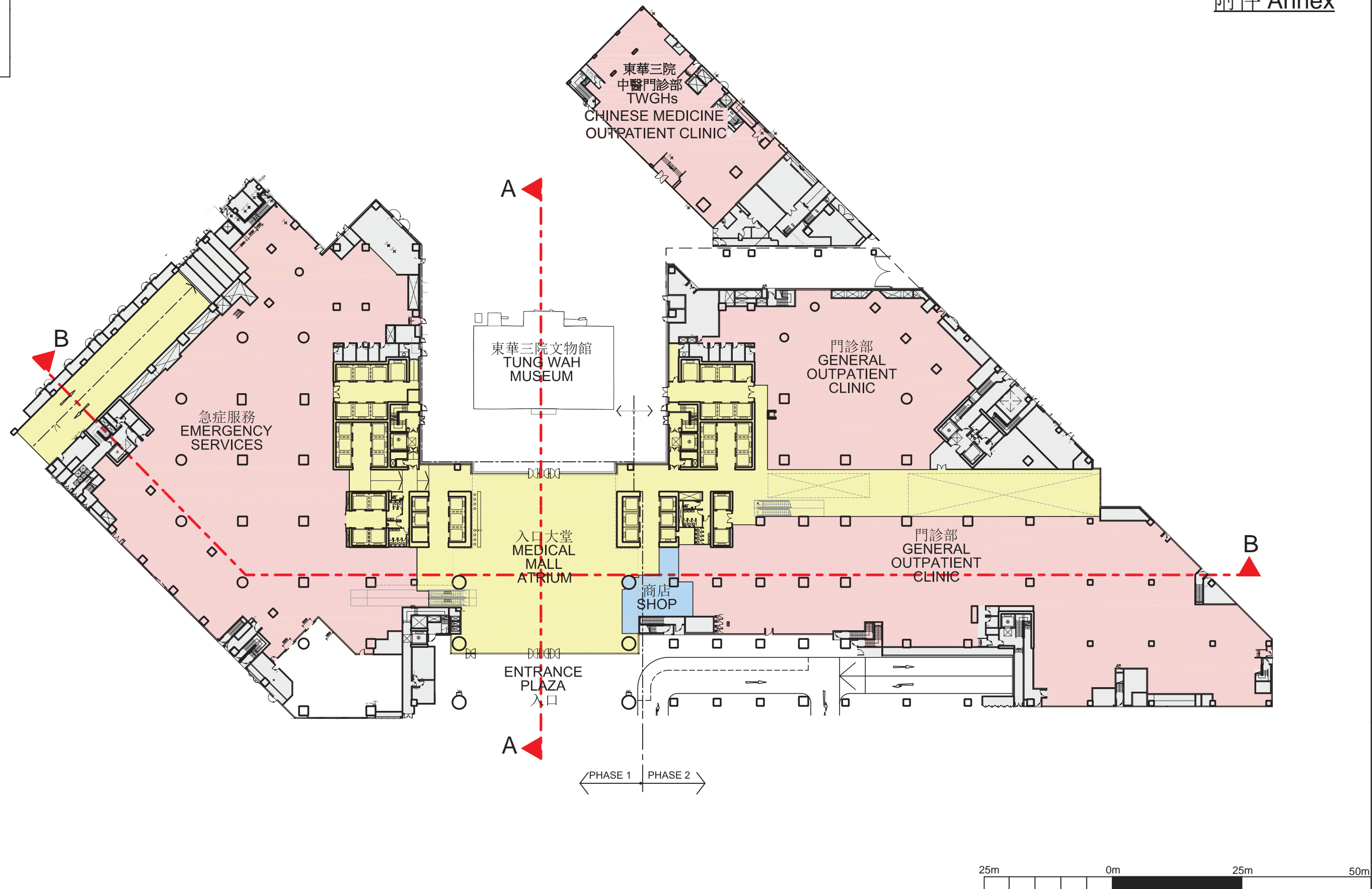
圖例 LEGENDS

公共區域
PUBLIC AREA

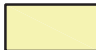


輔助設施 / 員工設施
ANCILLARY FACILITY / STAFF FACILITY

機電房
PLANT ROOM

停車場
CARPARK



圖例 LEGENDS

- | | | | |
|---|---|---|---|
|  公共區域
PUBLIC AREA |  醫療服務
CLINICAL SERVICES |  輔助設施 / 員工設施
ANCILLARY FACILITY / STAFF FACILITY |  機電房
PLANT ROOM |
|---|---|---|---|



圖例 LEGENDS

- | | | | |
|---------------------|---------------------------|--|-------------------|
| 公共區域
PUBLIC AREA | 醫療服務
CLINICAL SERVICES | 輔助設施 / 員工設施
ANCILLARY FACILITY / STAFF FACILITY | 機電房
PLANT ROOM |
|---------------------|---------------------------|--|-------------------|



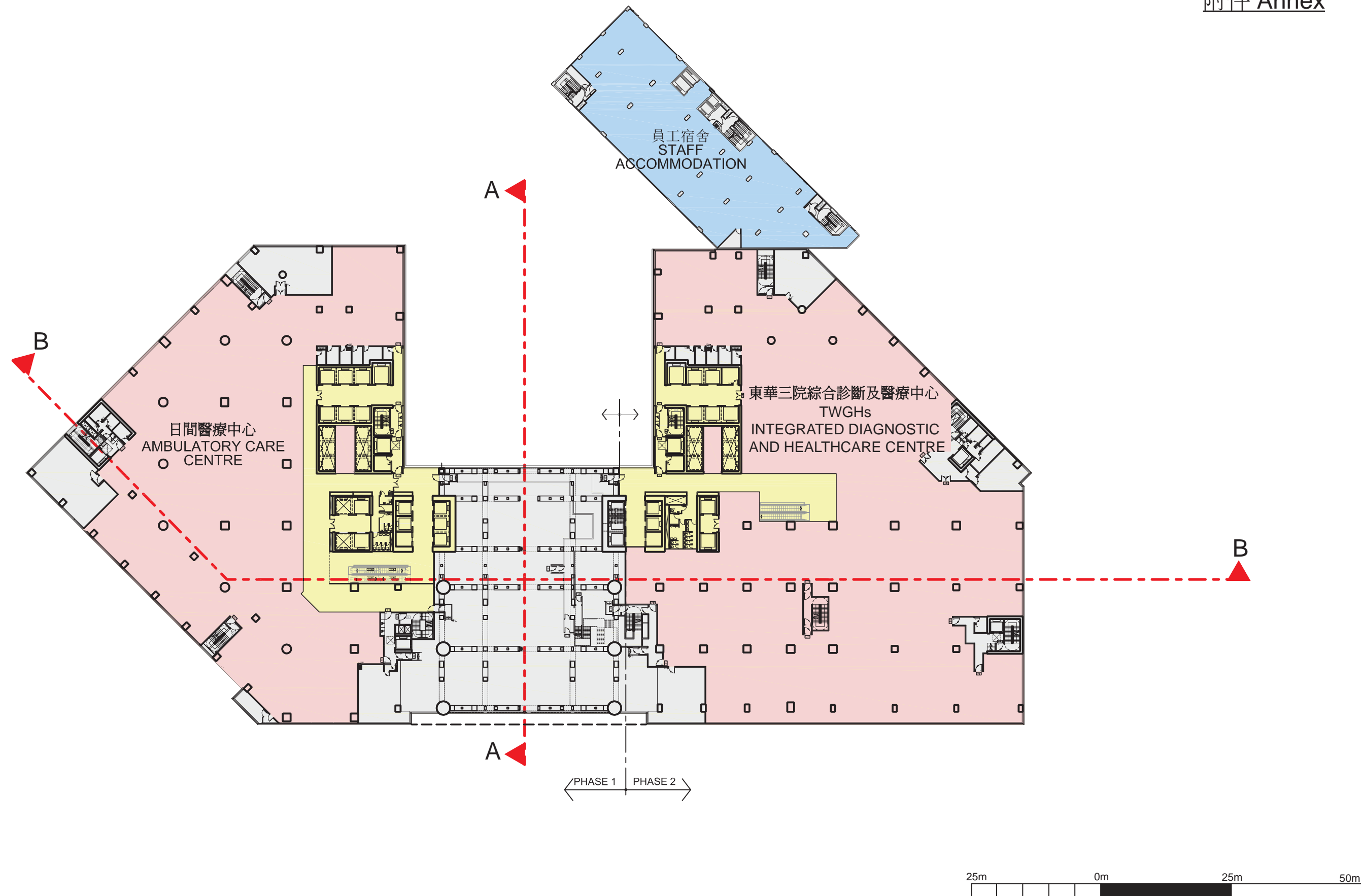
圖例 LEGENDS

公共區域 PUBLIC AREA	醫療服務 CLINICAL SERVICES	輔助設施 / 員工設施 ANCILLARY FACILITY / STAFF FACILITY	機電房 PLANT ROOM	綠化設施 LANDSCAPING WORKS
---------------------	---------------------------	--	-------------------	---------------------------


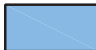



圖例 LEGENDS

 公共區域 PUBLIC AREA	 醫療服務 CLINICAL SERVICES	 輔助設施 / 員工設施 ANCILLARY FACILITY / STAFF FACILITY	 機電房 PLANT ROOM	 綠化設施 LANDSCAPING WORKS
---	---	---	---	---

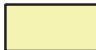

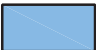



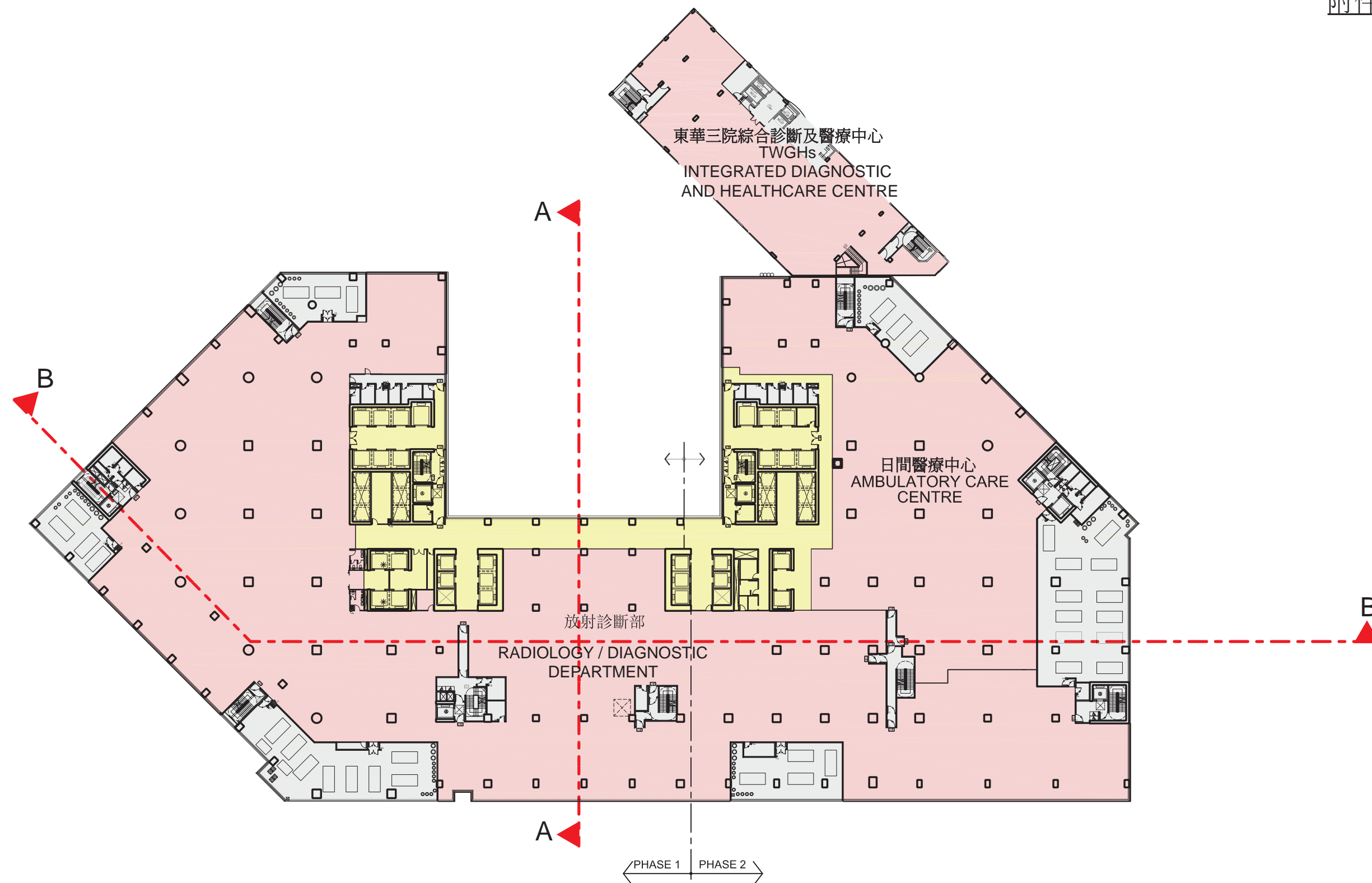
圖例 LEGENDS

- | | | | |
|---|---|---|---|
|  公共區域
PUBLIC AREA |  醫療服務
CLINICAL SERVICES |  輔助設施 / 員工設施
ANCILLARY FACILITY / STAFF FACILITY |  機電房
PLANT ROOM |
|---|---|---|---|



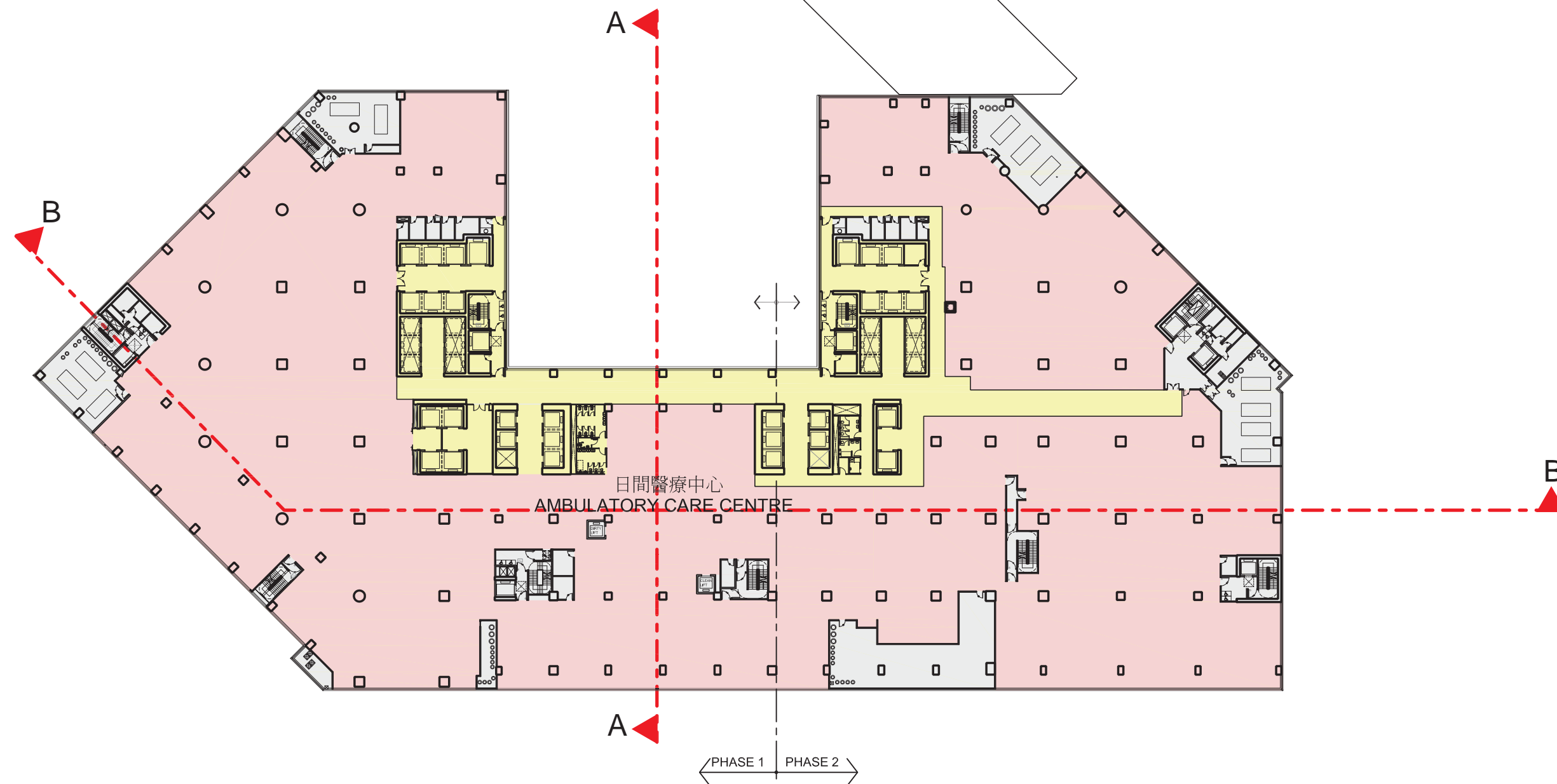
圖例 LEGENDS

- | | | | |
|---|---|---|---|
|  公共區域
PUBLIC AREA |  醫療服務
CLINICAL SERVICES |  輔助設施 / 員工設施
ANCILLARY FACILITY / STAFF FACILITY |  機電房
PLANT ROOM |
|---|---|---|---|



圖例 LEGENDS

- | | | |
|---|---|--|
|  公共區域
PUBLIC AREA |  醫療服務
CLINICAL SERVICES |  機電房
PLANT ROOM |
|---|---|--|



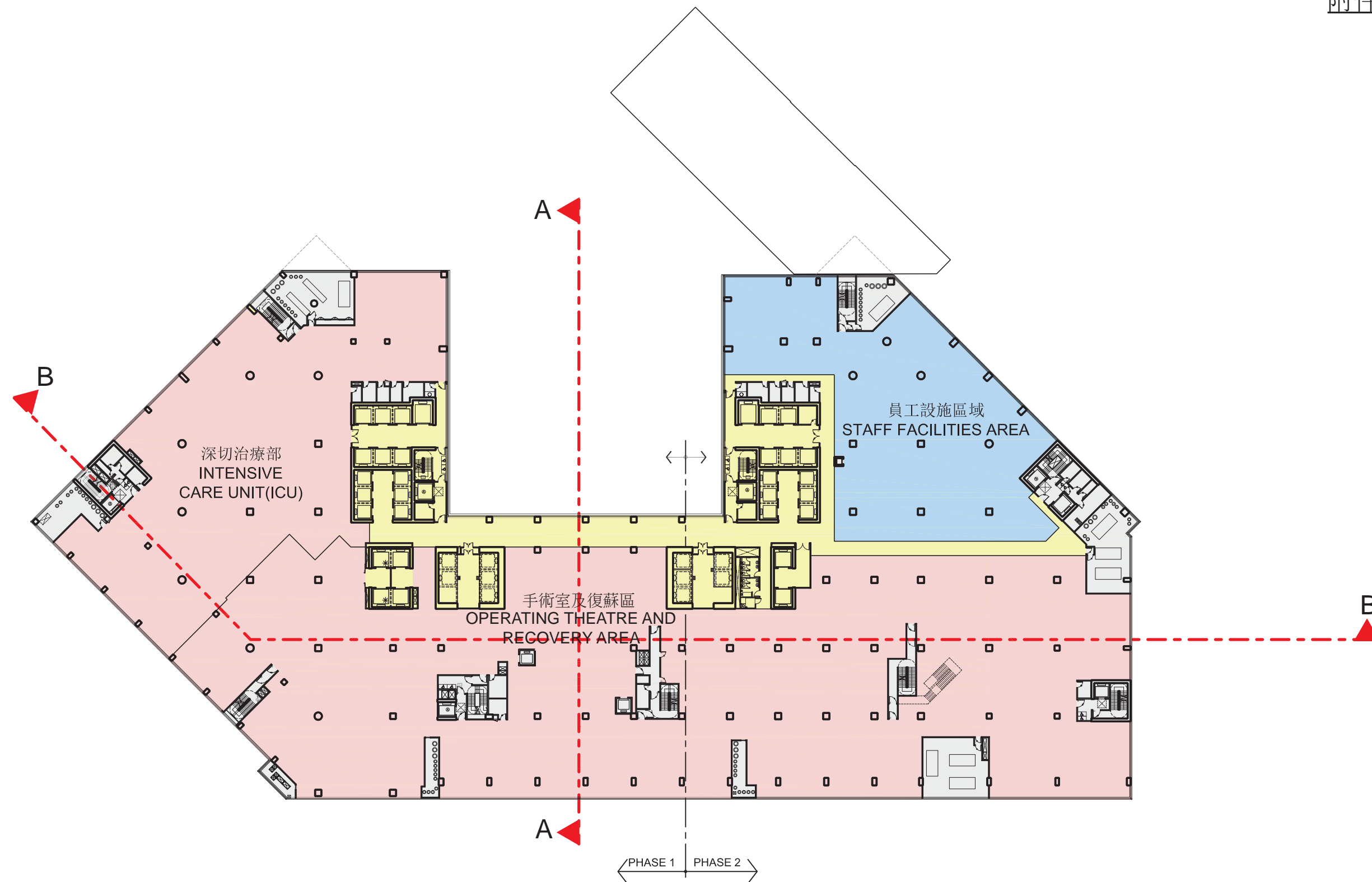
圖例 LEGENDS

- | | | |
|---|---|--|
|  公共區域
PUBLIC AREA |  醫療服務
CLINICAL SERVICES |  機電房
PLANT ROOM |
|---|---|--|



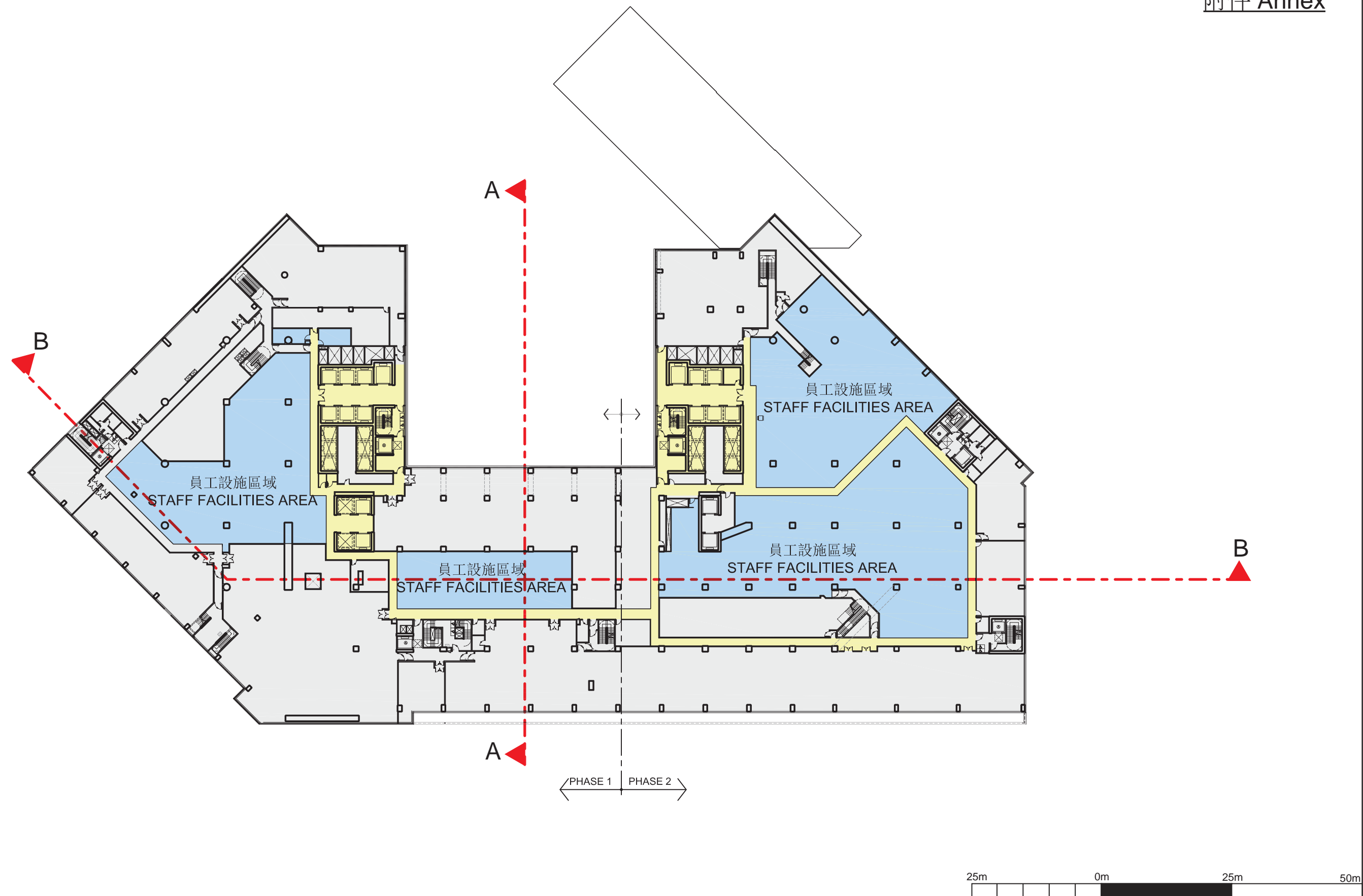
圖例 LEGENDS

- | | | | |
|---|---|---|---|
|  公共區域
PUBLIC AREA |  醫療服務
CLINICAL SERVICES |  輔助設施 / 員工設施
ANCILLARY FACILITY / STAFF FACILITY |  機電房
PLANT ROOM |
|---|---|---|---|



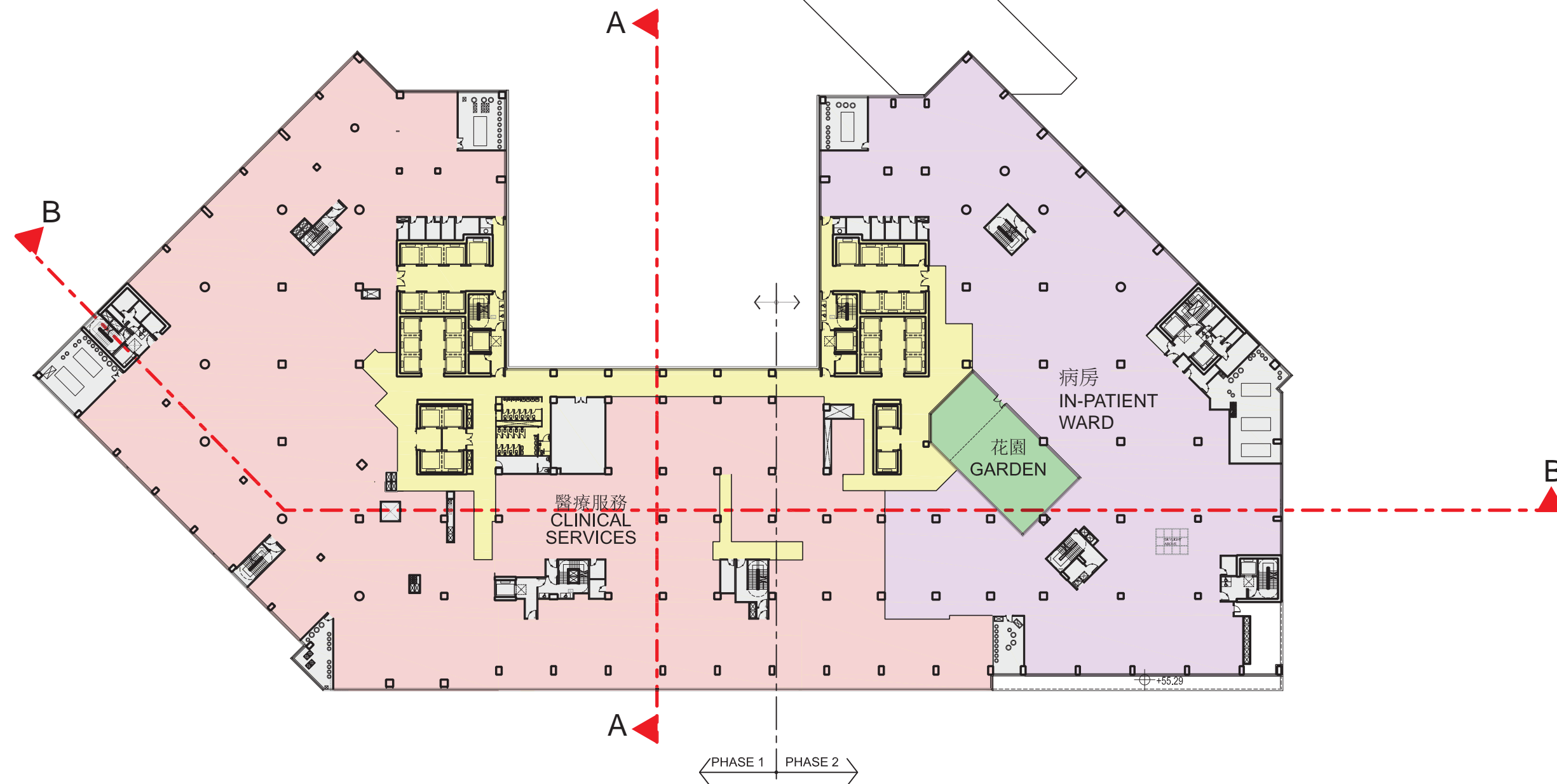
圖例 LEGENDS

- | | | | |
|---------------------|---------------------------|--|-------------------|
| 公共區域
PUBLIC AREA | 醫療服務
CLINICAL SERVICES | 輔助設施 / 員工設施
ANCILLARY FACILITY / STAFF FACILITY | 機電房
PLANT ROOM |
|---------------------|---------------------------|--|-------------------|



圖例 LEGENDS

- | | | |
|---|--|---|
|  公共區域
PUBLIC AREA |  輔助設施 / 員工設施
ANCILLARY FACILITY / STAFF FACILITY |  機電房
PLANT ROOM |
|---|--|---|



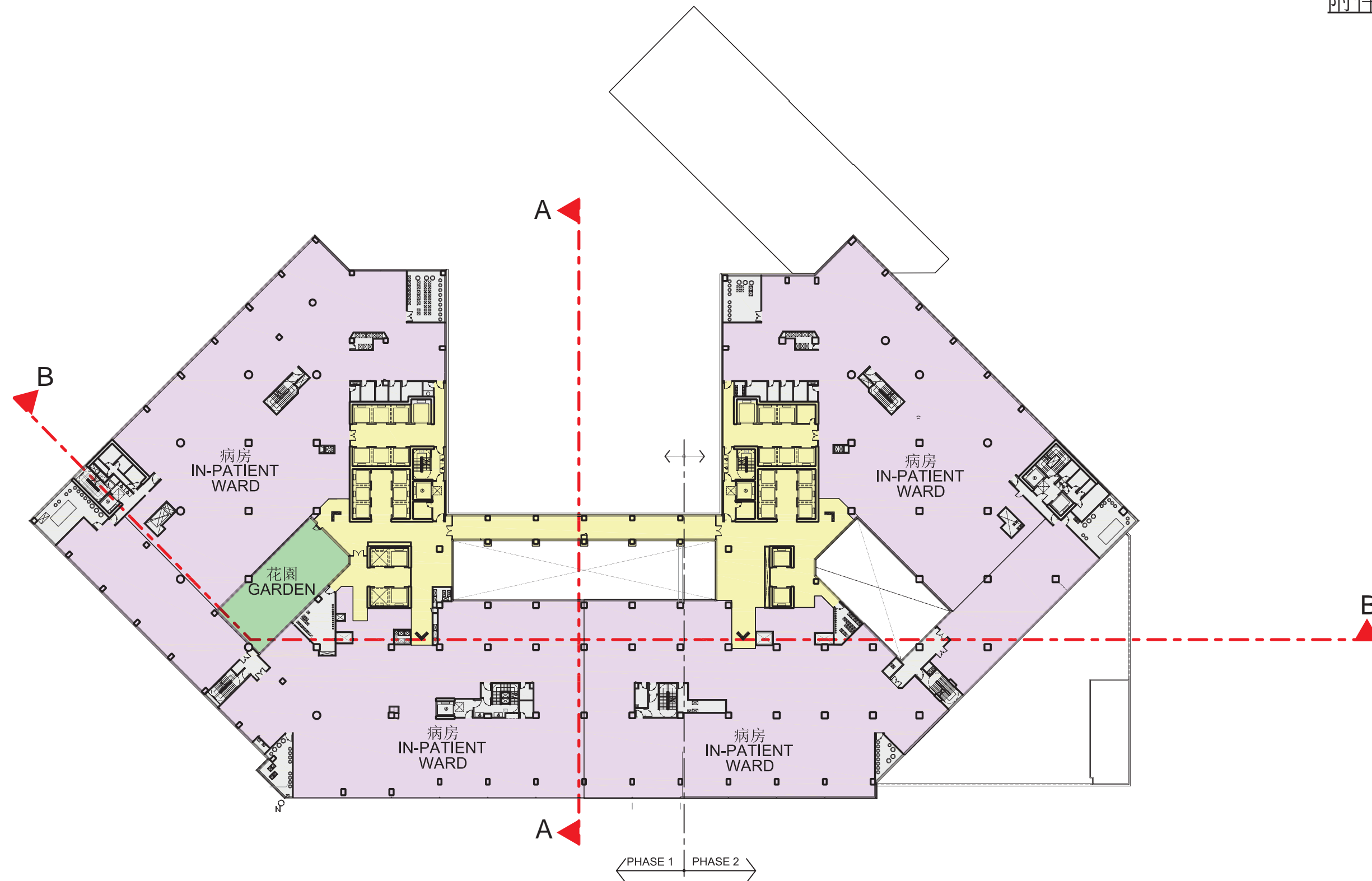
圖例 LEGENDS

- | | | | | |
|---|---|--|---|---|
|  公共區域
PUBLIC AREA |  醫療服務
CLINICAL SERVICES |  機電房
PLANT ROOM |  病房
IN-PATIENT WARD |  綠化設施
LANDSCAPING WORKS |
|---|---|--|---|---|



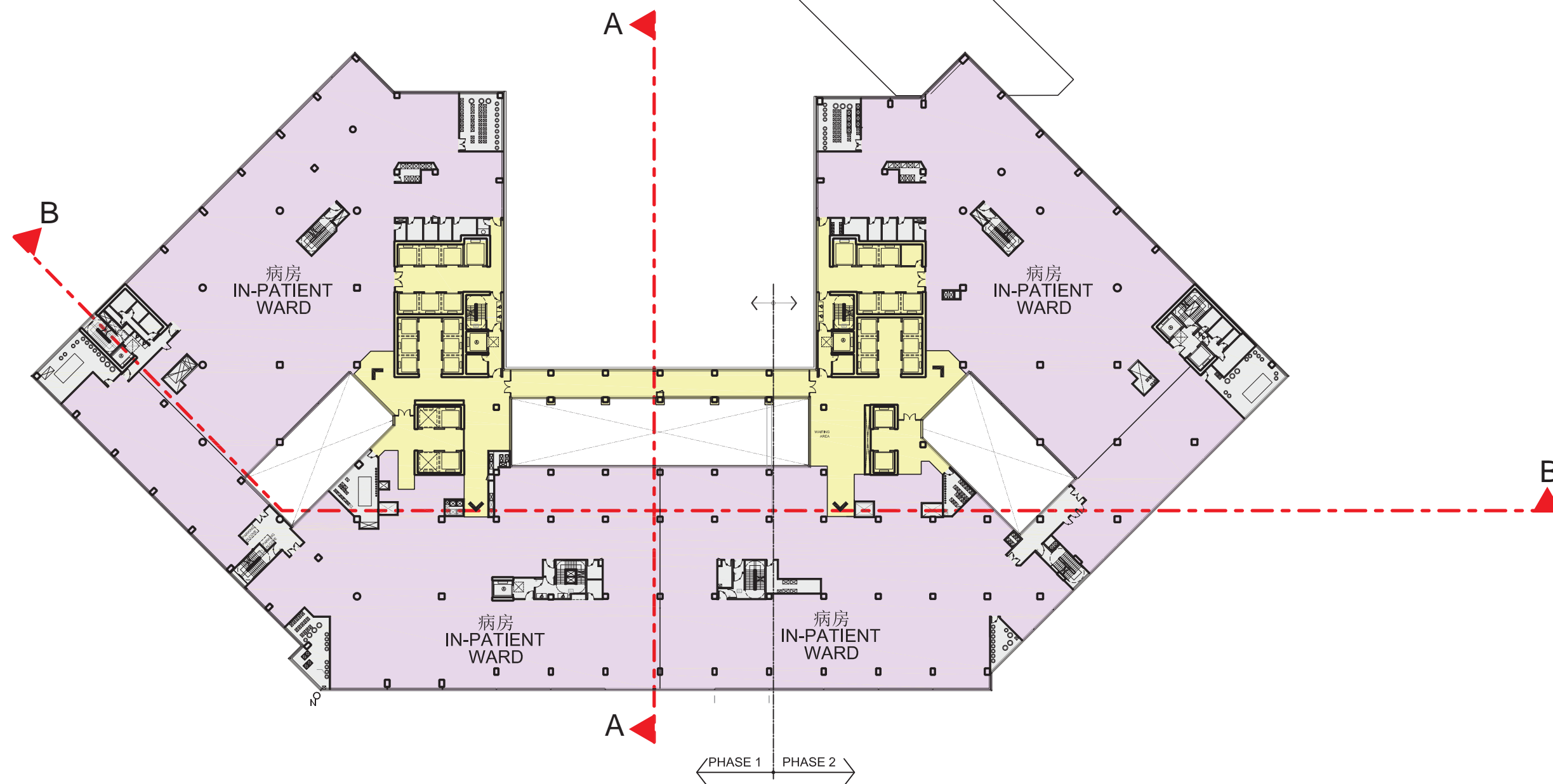
圖例 LEGENDS

- | | | | | |
|---------------------|---------------------------|--|-------------------|---------------------------|
| 公共區域
PUBLIC AREA | 醫療服務
CLINICAL SERVICES | 輔助設施 / 員工設施
ANCILLARY FACILITY / STAFF FACILITY | 機電房
PLANT ROOM | 綠化設施
LANDSCAPING WORKS |
|---------------------|---------------------------|--|-------------------|---------------------------|



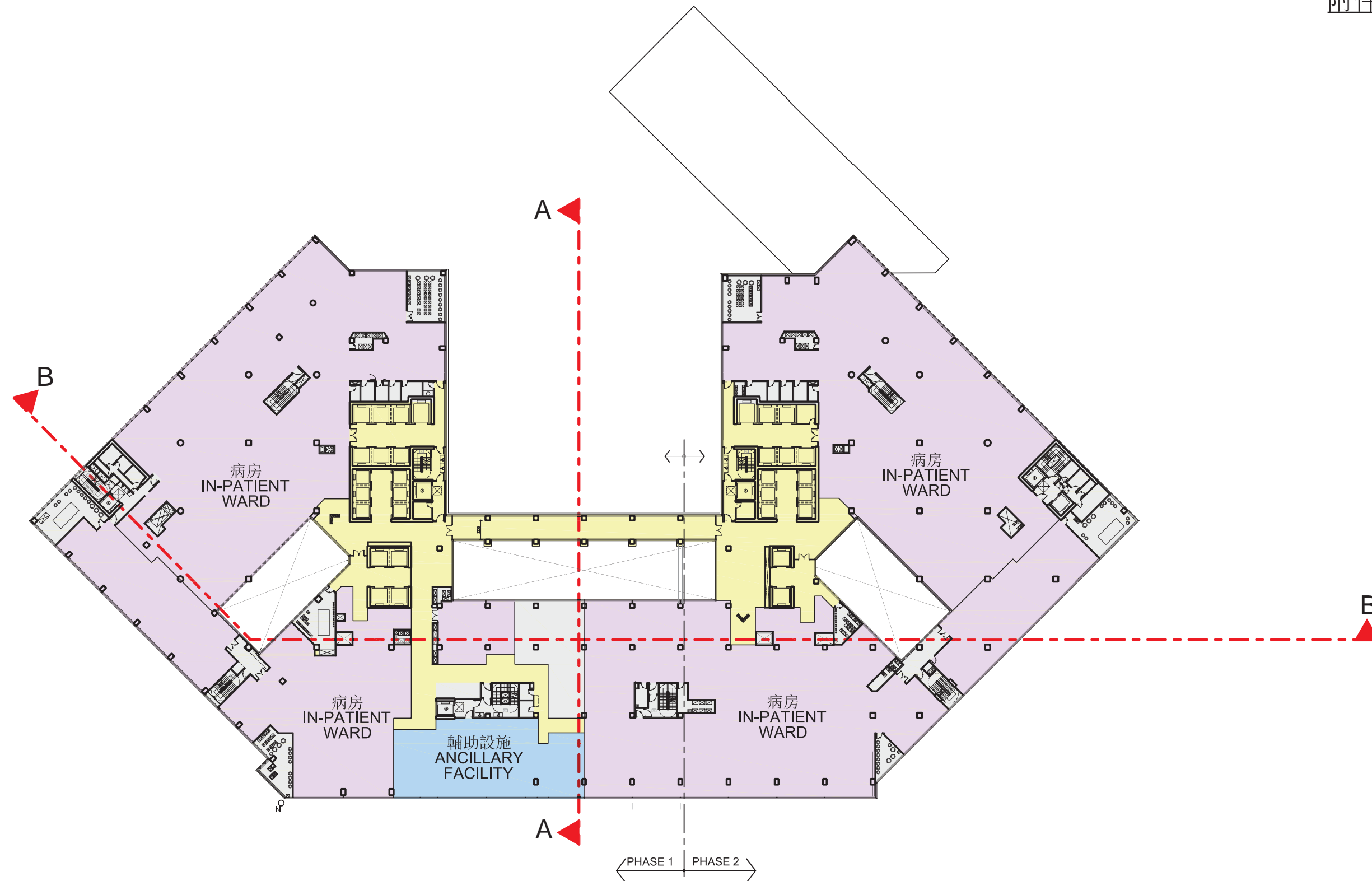
圖例 LEGENDS

- | | | | |
|---|---|---|---|
|  公共區域
PUBLIC AREA |  機電房
PLANT ROOM |  病房
IN-PATIENT WARD |  綠化設施
LANDSCAPING WORKS |
|---|---|---|---|



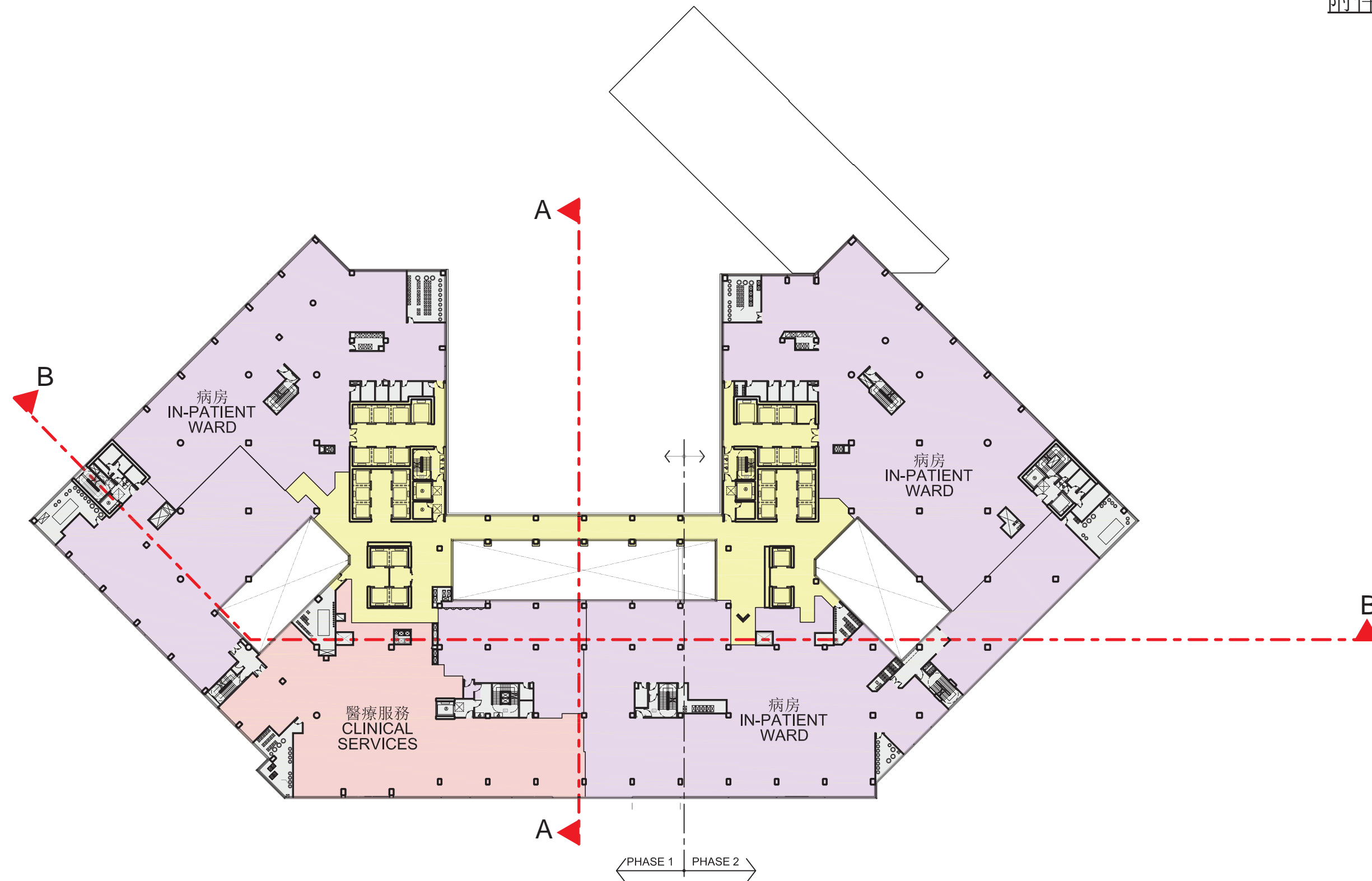
圖例 LEGENDS

- | | | |
|---|---|---|
|  公共區域
PUBLIC AREA |  機電房
PLANT ROOM |  病房
IN-PATIENT WARD |
|---|---|---|



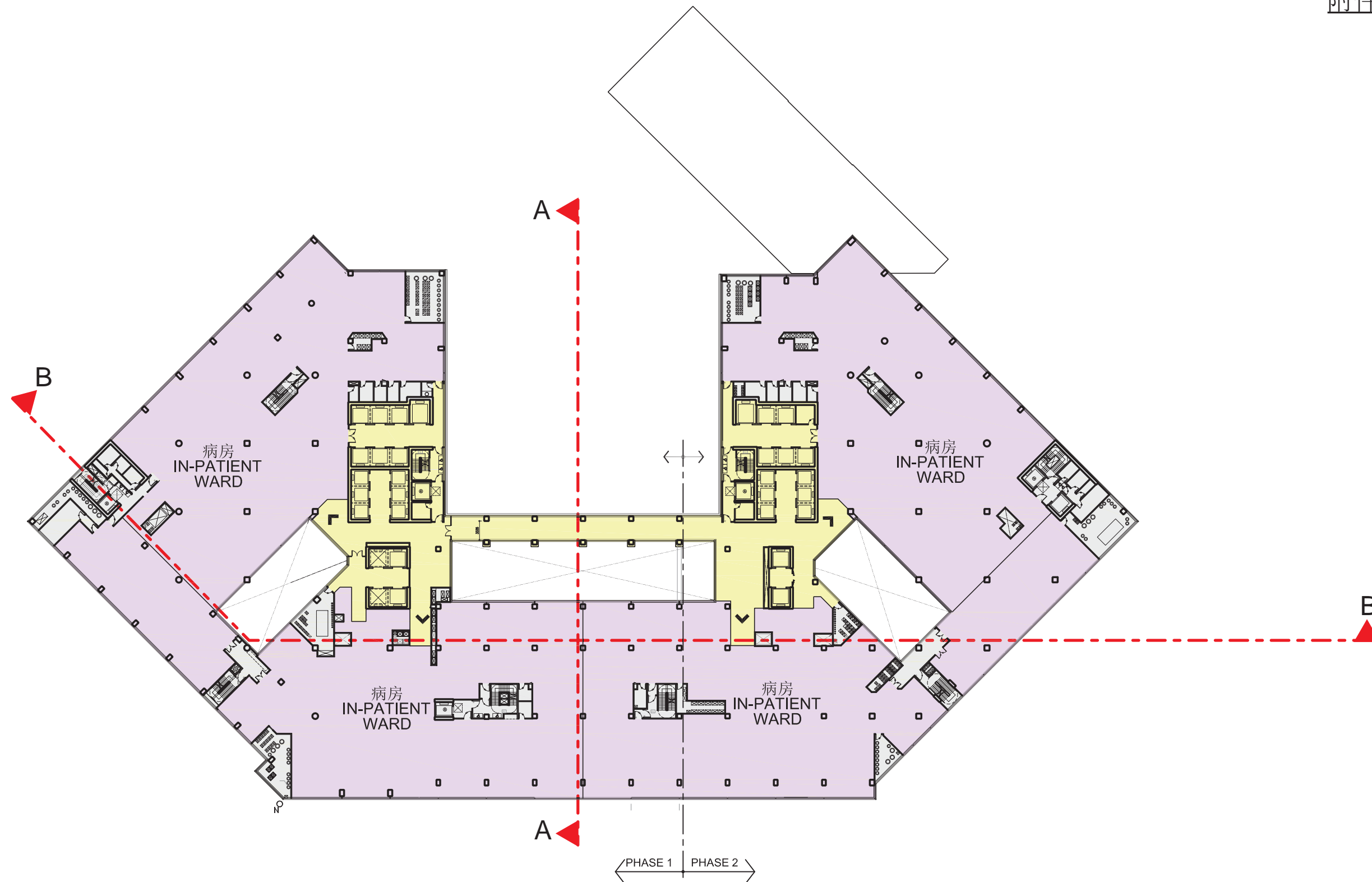
圖例 LEGENDS

- | | | | |
|---|--|---|---|
|  公共區域
PUBLIC AREA |  輔助設施 / 員工設施
ANCILLARY FACILITY / STAFF FACILITY |  機電房
PLANT ROOM |  病房
IN-PATIENT WARD |
|---|--|---|---|



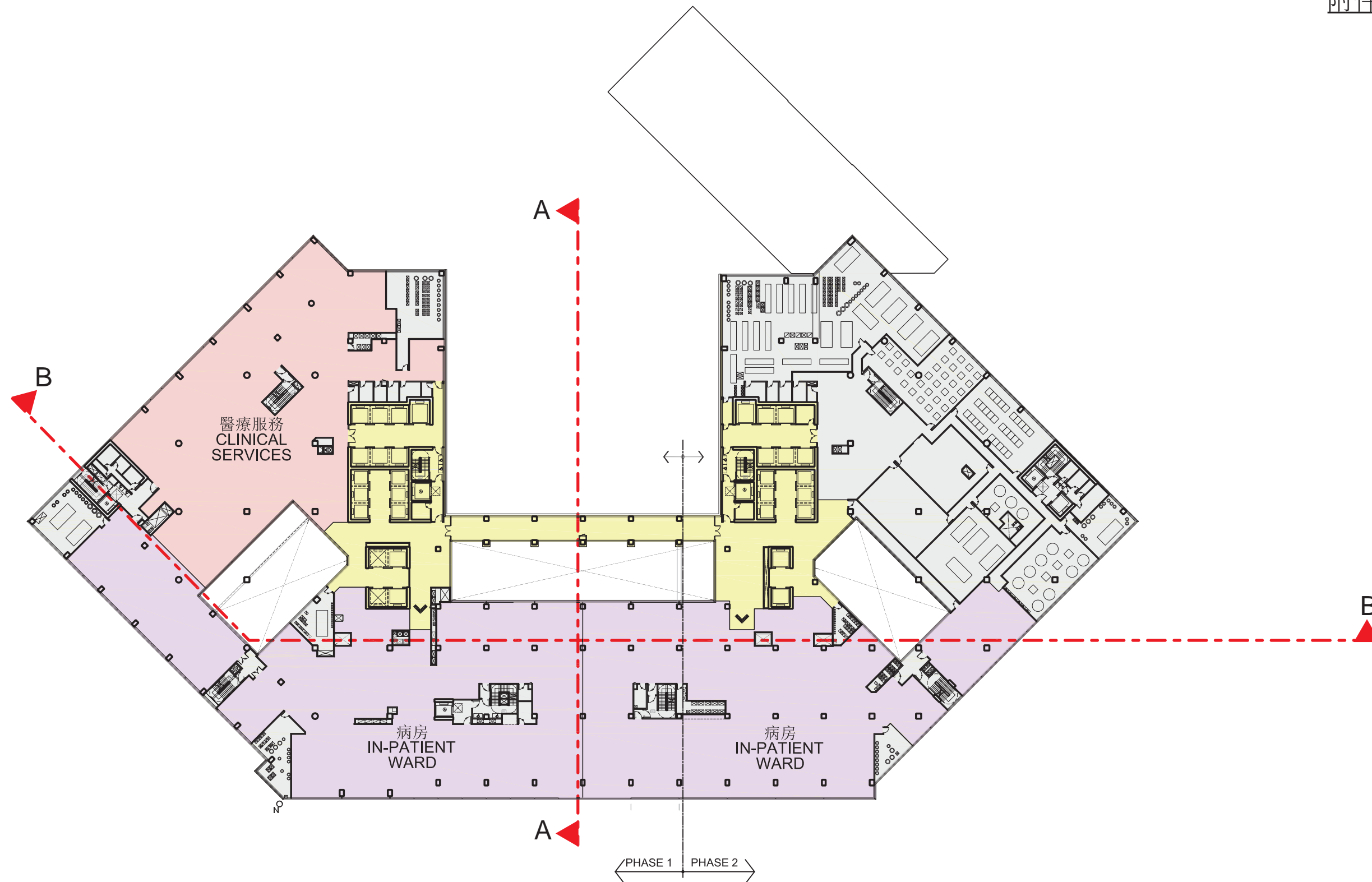
圖例 LEGENDS

- | | | | |
|---|---|--|---|
|  公共區域
PUBLIC AREA |  醫療服務
CLINICAL SERVICES |  機電房
PLANT ROOM |  病房
IN-PATIENT WARD |
|---|---|--|---|



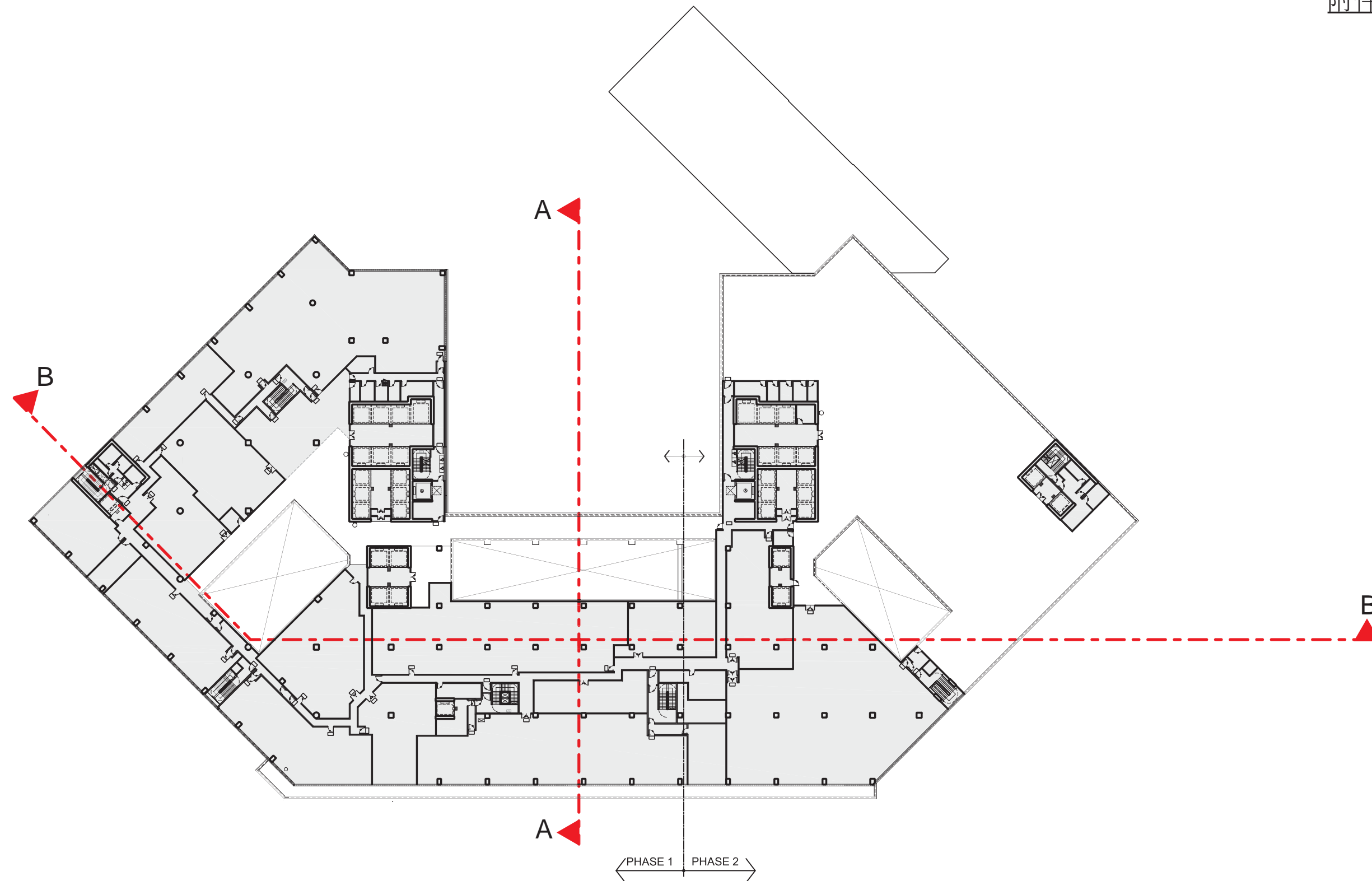
圖例 LEGENDS

- | | | |
|---|---|---|
|  公共區域
PUBLIC AREA |  機電房
PLANT ROOM |  病房
IN-PATIENT WARD |
|---|---|---|



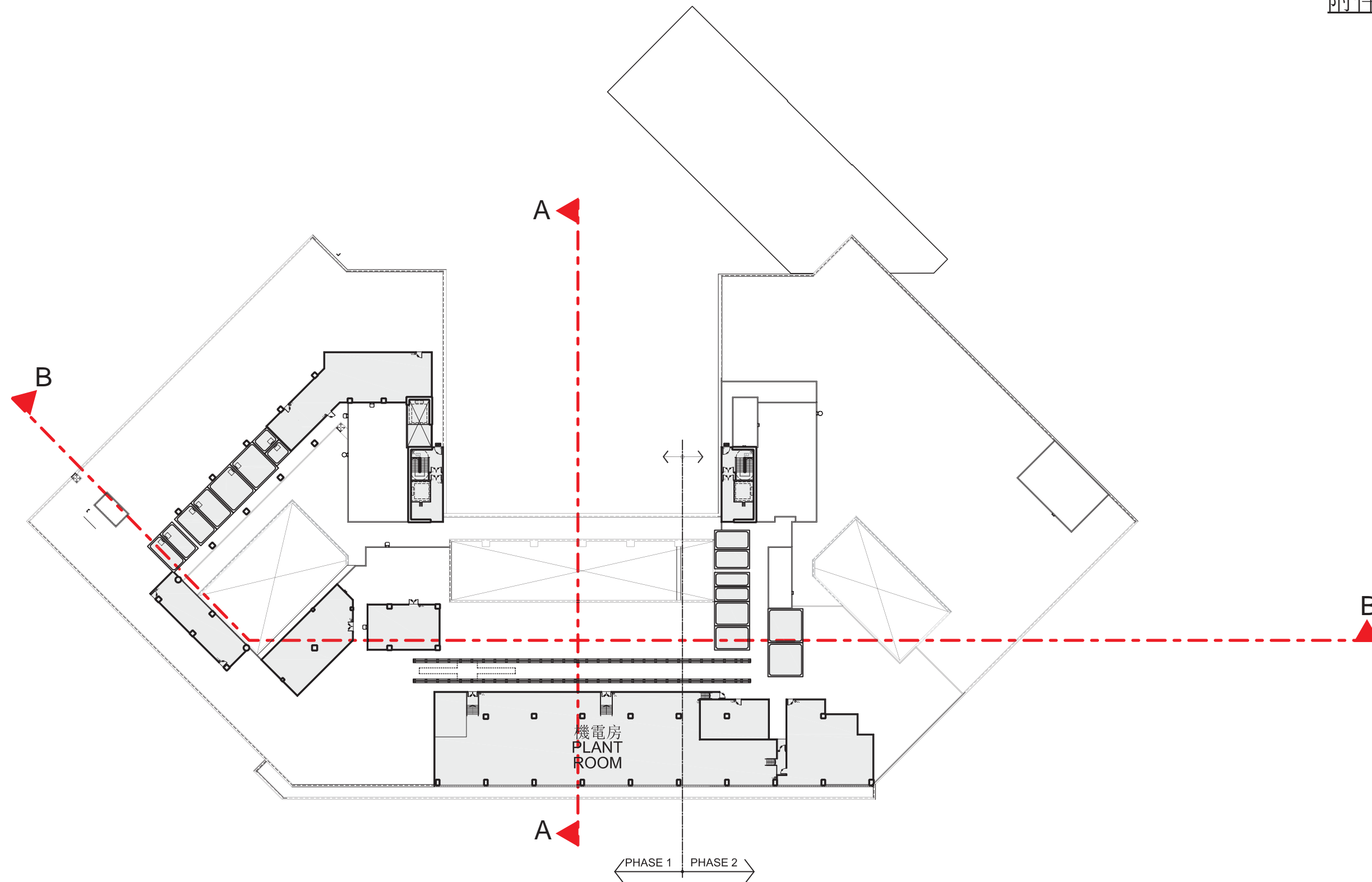
圖例 LEGENDS

- | | | | |
|---|---|--|---|
|  公共區域
PUBLIC AREA |  醫療服務
CLINICAL SERVICES |  機電房
PLANT ROOM |  病房
IN-PATIENT WARD |
|---|---|--|---|



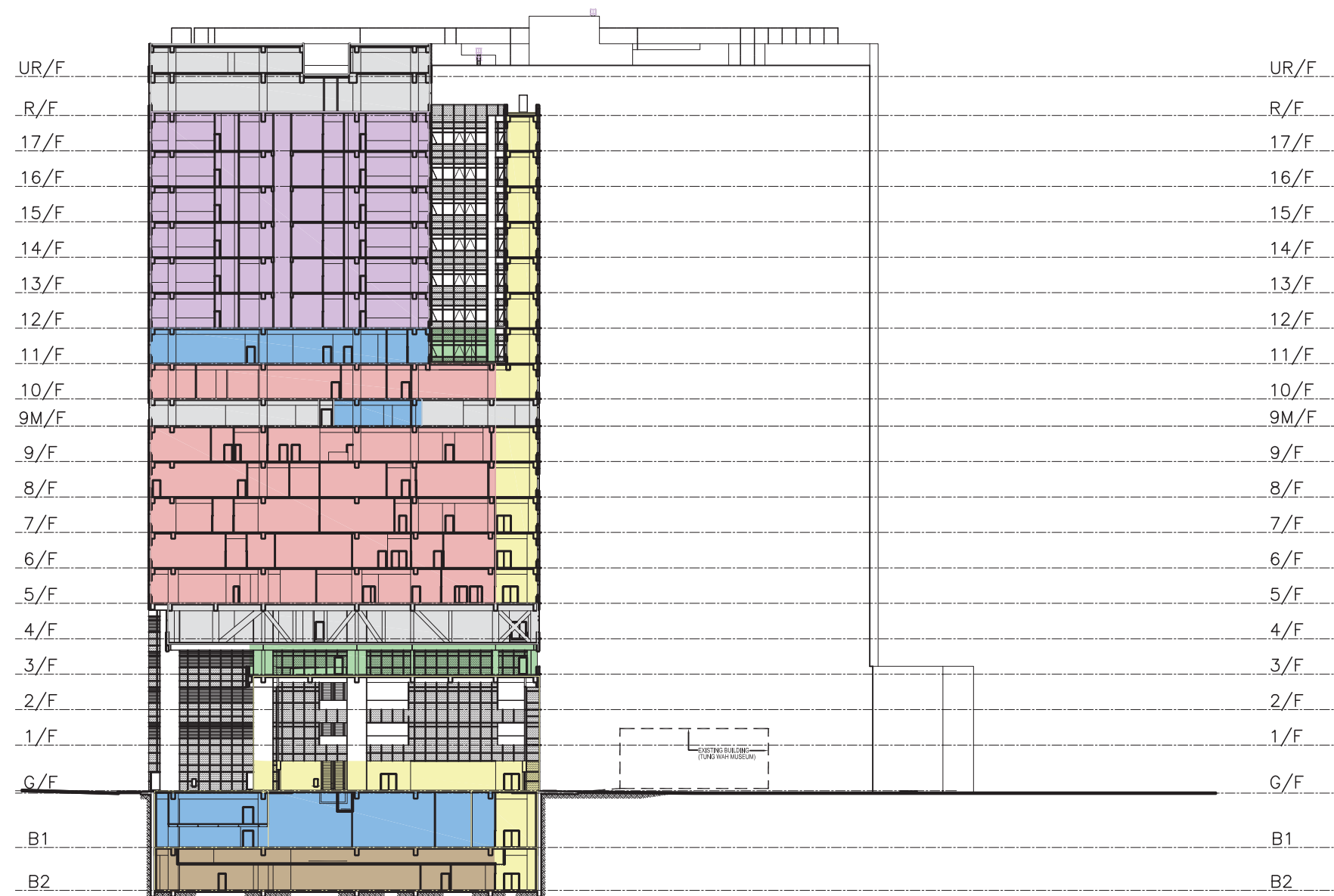
圖例 LEGENDS

 機電房
PLANT ROOM



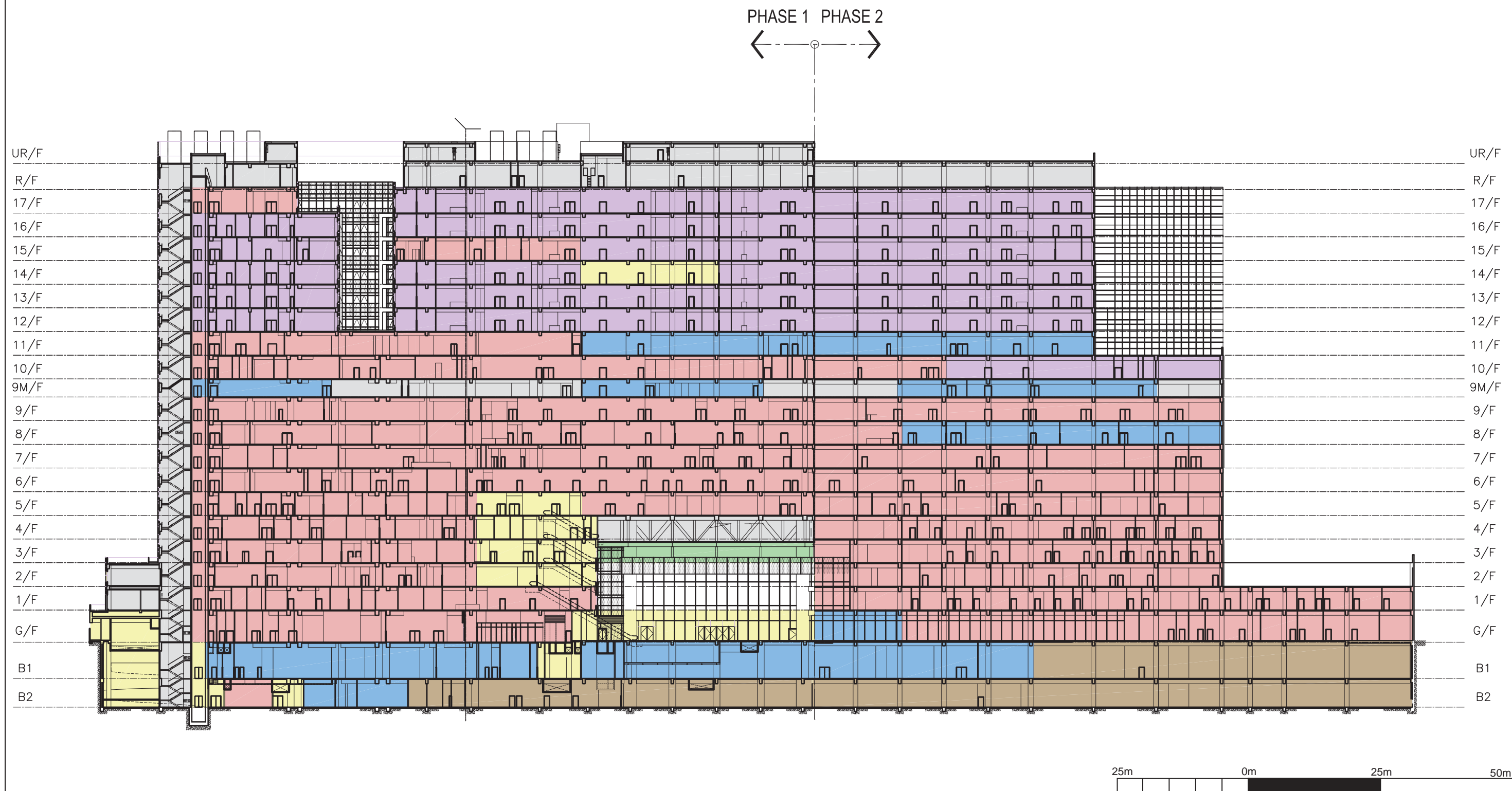
圖例 LEGENDS





圖例 LEGENDS

 公共區域 PUBLIC AREA	 醫療服務 CLINICAL SERVICES	 輔助設施 / 員工設施 ANCILLARY FACILITY / STAFF FACILITY	 機電房 PLANT ROOM	 病房 IN-PATIENT WARD	 綠化設施 LANDSCAPING WORKS	 停車場 CARPARK
---	---	--	---	---	---	--



圖例 LEGENDS

 公共區域 PUBLIC AREA	 醫療服務 CLINICAL SERVICES	 輔助設施 / 員工設施 ANCILLARY FACILITY / STAFF FACILITY	 機電房 PLANT ROOM	 病房 IN-PATIENT WARD	 綠化設施 LANDSCAPING WORKS	 停車場 CARPARK
---	---	--	---	---	---	--