

**LEGISLATIVE COUNCIL  
PUBLIC WORKS SUBCOMMITTEE**

**259RS – Cycle tracks connecting North West New Territories with North  
East New Territories — Tuen Mun to Sheung Shui section (Remaining)**

**Follow-up Actions to Meeting on 23 April 2016**

Item 1: At the request of Hon WONG Kwok-hing, the Administration will provide supplementary information on their plan to make use of the resting station or hubs to promote the local economy development e.g. allowing small business to take part in operating those food kiosks, outside seating accommodation or bicycle repairing stores.

For the section of the NT cycle track network from Tuen Mun to Sheung Shui, the ongoing Stage 1 and the proposed 259RS – Remaining Works, supporting facilities such as food kiosks and/or bicycle rental kiosks which usually also provide bicycle repair services will be provided at the cycle track entry/exit hubs. We have allowed space in the hubs for accommodating such facilities. Under the ongoing Stage 1, hubs are being constructed at Tin Shui Wai and Tuen Mun. In light of the programmed completion of the Stage 1 later this year, preparation is being made to invite tenders for operating those kiosks. Small business operators would have the opportunity to take part in these businesses.

Item 2: At the request of Hon Albert CHAN, the Administration will provide drawing(s) of the proposed cycle tracks near Mai Po Lung Road. The Administration will also explain how the cycle track design as well as any measures that can be taken, can prevent or mitigate the risks to cyclists and pedestrians due to container trucks (usually parked nearby) travelling at the said location.

The proposed cycle track is designed in accordance with the Transport Planning and Design Manual issued by the Transport Department, with due consideration to the safety of cyclists and pedestrians. Appropriate traffic signs, road markings and physical measures such as plastic bollards are used to manage the traffic flow (including pedestrians, vehicles and bicycles) with a view to enhancing road safety.

At the intersection between cycle track and carriageway / vehicular run-in, cyclists will be required to dismount their bicycles and cross the carriageway or vehicular run-in on foot, similar to pedestrians.

For the section of cycle track concerned at Mai Po Lung Road as shown on the drawing at **Annex**, the following additional measures are proposed to enhance road safety at locations near the junction of Shek Wu Wai Road with Mai Po Lung Road:

- Erection of warning signs TS 460 “pedestrians on or crossing road ahead” and TS 520 “cycleway ahead” on: (1) Mai Po Lung Road (eastbound), (2) Shek Wu Wai Road (westbound), and (3) Shek Wu Wai Road (southbound), as well as (4) at the vehicular run-in of the vehicle (including container trucks) storage and parking area. These signs serve to forewarn vehicle drivers of pedestrians and cyclists ahead at the road crossings and passing the vehicular run-in.
- Trimming back or removing some of the vegetation at the verge, and laying of hard paving where necessary on Mai Po Lung Road at the bend near the above junction to ensure unobstructed sightline of the vehicle drivers.
- Installation of pedestrian railings at suitable locations to prevent illegal parking of vehicles on the footpath, channelize pedestrians to use the pedestrian crossings provided, and deter jay walking.

Item 3: At the request of Hon Emily LAU, the Administration will provide information on their plan -

- (a) to communicate with the residents having objection to the alignment design of the cycle track section from Tsuen Wan to Tuen Mun, to solicit their support to the construction of the cycle track project and to finalize a mutually acceptable design scheme.
- (b) to relieve the problem of inadequate provision of cycle parking spaces near MTR stations in New Territories; and
- (c) to solve the noise nuisance problem caused by cyclists at the existing cycle tracks in the vicinity of the densely populated areas.

- (a) We are actively pursuing the planning work of the cycle track section from Tsuen Wan to Tuen Mun for implementation in stages, comprising the advance works from Tsing Tsuen Bridge to Bayview Garden, the Stage 1 works from Bayview Garden to Ting Kau, and the Stage 2 works from Ting

Kau to Tuen Mun.

For the advance works, we have consulted the Tsuen Wan District Council in July 2015, and have gazetted in mid-March 2016 the amendment scheme for public consultation.

As for the Stage 1 and Stage 2 works, strong objections to the proposed cycle track at Sham Tseng, So Kwun Wat and Sam Shing were received during previous public consultations. We have therefore, in the past two years, been discussing different alignment options with the local members of the Tsuen Wan and Tuen Mun District Councils. We are reviewing the different schemes and implementation strategy in order to come up with one that is both cost-effective and acceptable. We aim to meet with the relevant district council members again and the representatives of those residential developments having strong views as early as possible upon completing our review in mid-2016. We will update them on the progress and further engage them in order to finalise the cycle track alignment and design. We will also propose suitable environmental improvement measures along the cycle track as far as practicable, with a view to addressing their concerns and rendering this section of the cycle track proposal more acceptable. Relevant arrangement is being made.






- (b) We have conveyed the concern on the inadequate provision of cycle parking spaces near MTR stations in the New Territories to the Transport Department. The Transport Department will continue to monitor the situation and review timely bicycle parking provision and explore suitable ways (such as use of double-deck bicycle parking rack) to increase bicycle parking spaces so as to cope with the demand.
- (c) Regarding the potential noise nuisance created by some of the cyclists, it is considered that a long term but effective way in dealing with or gradually changing such behaviour is through education and suitable publicity. The following measures are being made to advocate considerate manner of cyclists in using the cycle track:
  - Include noise nuisance in considerate cycling behaviour message in school talks conducted from time to time by Civil Engineering and Development Department on the New Territories Cycle Track Network

project for safe and proper cycling.

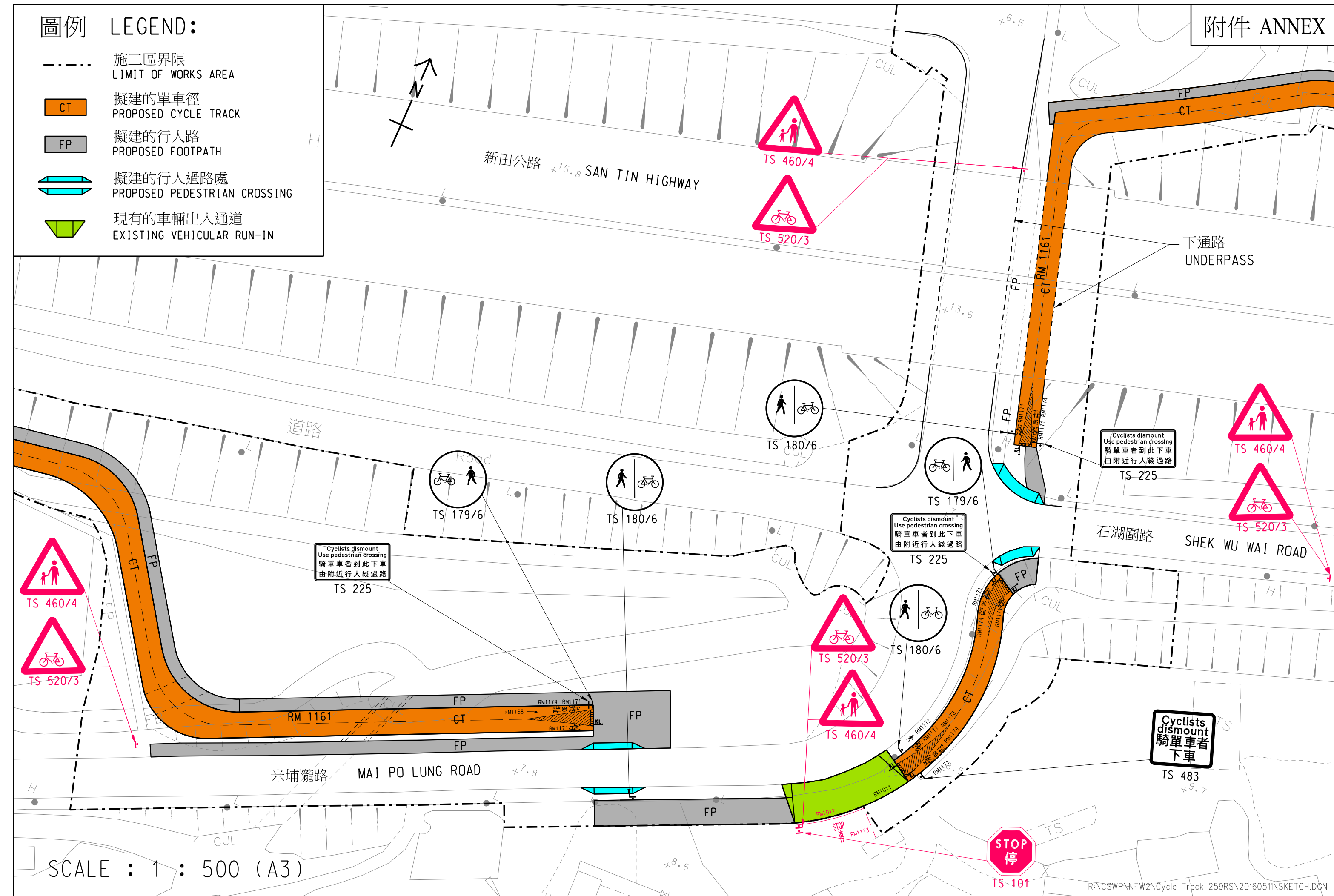
- Erect posters at the entry/exit hubs and suitable locations along the cycle track to remind the cyclists to be considerate and to keep their noise level down especially at locations close to residential estates and villages.
- Distribute leaflets advocating considerate manner in using cycle track at the entry/exit hubs.

**Development Bureau**  
**May 2016**

圖例 LEGEND:

- |  |  |
|--|--|
|  | 施工區界限<br>LIMIT OF WORKS AREA             |
|  | 擬建的單車徑<br>PROPOSED CYCLE TRACK           |
|  | 擬建的行人路<br>PROPOSED FOOTPATH              |
|  | 擬建的行人過路處<br>PROPOSED PEDESTRIAN CROSSING |
|  | 現有的車輛出入通道<br>EXISTING VEHICULAR RUN-IN   |

附件 ANNEX



SCALE : 1 : 500 (A3)

R:\CSWP\NTW2\Cycle Track 259RS\20160511\SKETCH.DGN