

**Follow-up to Meeting of the Public Works Subcommittee
Held on 15 June 2016**

In Relation to PWSC(2016-17)4

When the item on PWSC(2016-17)4 was discussed at the Public Works Subcommittee meeting held on 15 June 2016, Members requested the Government to provide supplementary information on various issues. Our reply is set out below.

A. Design drawings (including exterior design) of the proposed permanent covered performance stage of “Improving the Tourist Facilities at Lam Tsuen Wishing Square” (viz. 459RO) *(as requested by Hon CHAN Chi-chuen)*

2. Design drawings, section and elevation of the proposed permanent covered performance stage of “Improving the Tourist Facilities at Lam Tsuen Wishing Square” are at **Annex 1**.

B. The 16 project proposals on “Signature Project Scheme of Kwun Tong District” received by the Kwun Tong District Council and how the two projects, i.e. “Construction of Music Fountains at Kwun Tong Promenade” (viz. 458RO) and “Construction of Lift Tower at Shung Yan Street in Kwun Tong” (viz. 460RO approved by the Finance Committee earlier), were selected *(as requested by Hon Alan LEONG Kah-kit)*

3. At the meeting on 1 March, 2013, the Kwun Tong District Council (KTDC) decided to collect public views on the “Signature Project Scheme (SPS) of Kwun Tong District” by its Members. A number of suggestions were put forward by the KTDC members after collecting local views through a bottom-up approach. In May 2013, KTDC established the Signature Project Scheme Working Group (SPSWG) and invited its members to submit written project proposals for detailed discussion. Subsequently, the SPSWG resolved that a proposed project would not be considered further under the SPS if its estimated cost exceeded the upper limit of \$100 million or was below the lower limit of \$30 million.

4. At its meeting on 3 June 2013, the SPSWG noted that a total of 16 SPS proposals had been received, including “Lift Tower and Footbridge at Sau Ming Road”; “New Spot in Kwun Tong - 3D Music Fountains”; “Community Project on Barrier-Free Information Access”; “OneKM Art and Cultural Promenade in Kwun Tong, Kowloon East”; “Kwun Tong Civic Plaza”; “Tsui Ping Sky City”; “Tsui Ping Eco-River”; “Staircases Connecting Ping Tin Estate in Lam Tin with Kai Tin Road and Lei Yue Mun Road”; “Barrier-Free Escalators”; “Kwun Tong Business Start-Up Square for Youth”; “Lift Tower at the Staircase of Shui Ning Street in Kwun Tong”; “Construction of Kai Tak Garden”; “Barrier-Free Access between Kai Tin Road, Lam Tin and Lam Tin MTR Station”; “Lifts between Luen On Street and Kung Lok Road as well as Kung Lok Road and Hong Lee Road in Kwun Tong”; “Nurse Consultation Spots at Public Housing Estates - Primary Medical Care Support Services”; and “Restoration of Jordan Valley Morning Walk Trail”.

5. Following the relevant departments’ initial assessments on aspects such as project costs, technical feasibility, estimated schedule of implementation, operation and maintenance responsibilities, some of the above proposals were considered not meeting the criteria laid down by the SPSWG, such as financial and technical feasibility. In view of the aforesaid considerations, the SPSWG decided, following site inspections and detailed deliberations, to recommend “Lift Tower at the Staircase of Shui Ning Street in Kwun Tong” and “New Spot in Kwun Tong - 3D Music Fountains” as Kwun Tong District’s SPS projects (which were later renamed as “Construction of Lift Tower at Shung Yan Street in Kwun Tong” and “Construction of Music Fountains at Kwun Tong Promenade”). KTDC endorsed the recommendation of the SPSWG at its meeting on 5 November 2013.

Home Affairs Bureau
June 2016



459 RO

改善林村許願廣場的旅遊配套設施

IMPROVING THE TOURIST FACILITIES AT LAM TSUEN WISHING SQUARE



Home Affairs Department
民政事務總署

舞台設計
PERFORMANCE STAGE DESIGN



459 RO

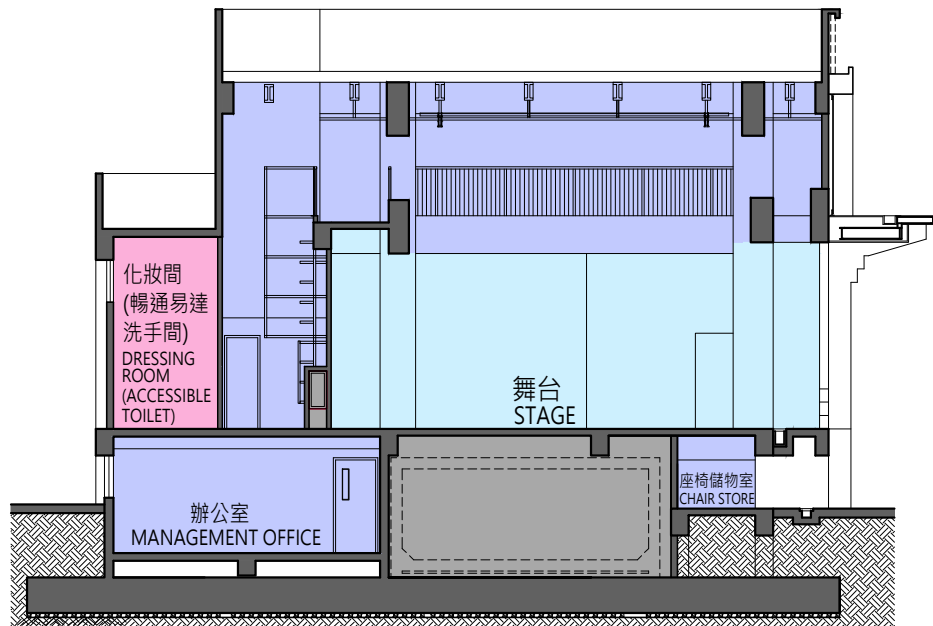
改善林村許願廣場的旅遊配套設施

IMPROVING THE TOURIST FACILITIES AT LAM TSUEN WISHING SQUARE



Home Affairs Department
民政事務總署

舞台設計
PERFORMANCE STAGE DESIGN

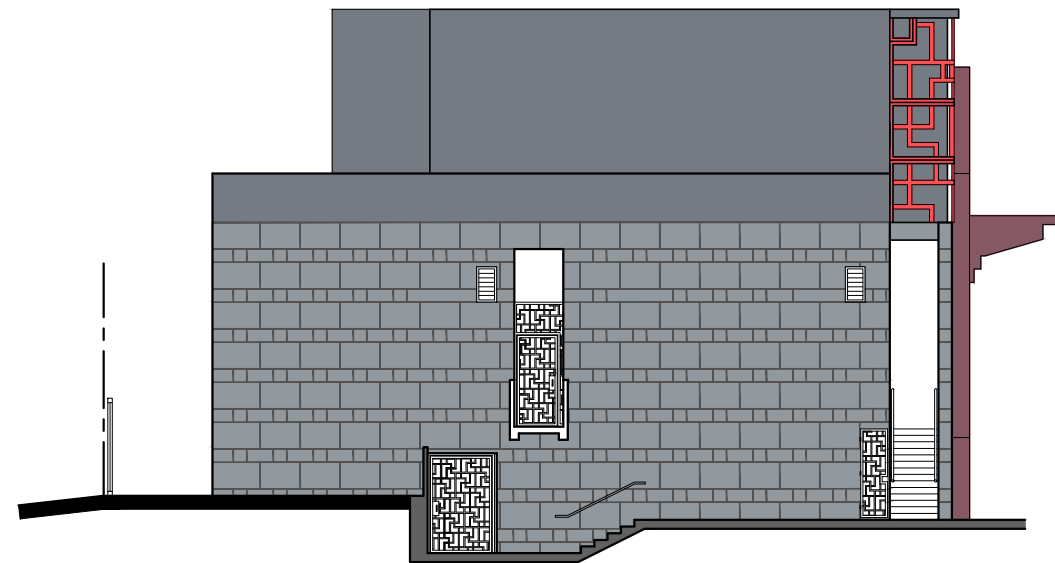


有蓋舞台 - 剖面圖
COVERED PERFORMANCE
STAGE - SECTION



圖例 LEGEND :

- 舞台範圍
STAGE AREA
- 後台設施
BACK STAGE FACILITIES
- 機房
PLANT ROOMS
- 化妝間(暢通易達洗手間)
DRESSING ROOM (ACCESSIBLE TOILET)



有蓋舞台 - 立面圖
COVERED PERFORMANCE
STAGE - ELEVATION