

**立法會**  
**Legislative Council**

LC Paper No. CB(4)333/15-16(04)

Ref. : CB4/PL/TP

**Panel on Transport**

**Subcommittee on Matters Relating to Railways**  
**Special meeting on 14 December 2015**

**Background brief on staffing proposal relating to the Shatin to  
Central Link and Kwun Tong Line Extension projects**

**Purpose**

This paper provides background information on the Shatin to Central Link ("SCL") and Kwun Tong Line Extension ("KTE") projects ("the Projects"); as well as the staffing arrangements of the Projects. It also summarizes the major views and concerns expressed by the Legislative Council ("LegCo") Members during past discussions.

**Background**

SCL project

2. SCL, with a total length of 17 kilometres, consists of two sections, Tai Wai to Hung Hom Section<sup>1</sup> and Hung Hom to Admiralty Section<sup>2</sup>. The proposed alignment plan is at **Appendix I**. In March 2008, the Executive Council decided to proceed with the implementation of SCL project using the concession approach. Under this approach, the Administration is responsible for the construction costs of SCL whilst the

---

<sup>1</sup> Tai Wai to Hung Hom Section is the extension of Ma On Shan Line from Tai Wai to Hung Hom, via Southeast Kowloon and connects to the West Rail Line. It will increase the Shatin-Kowloon rail capacity and provide railway service to the new developments in Southeast Kowloon.

<sup>2</sup> Hung Hom to Admiralty Section is an extension of the existing East Rail Line from Hung Hom across the Harbour to Hong Kong Island. It can interchange with Tai Wai to Hung Hom Section at Hung Hom. It will increase the cross-harbour rail capacity and enhance the connectivity between the New Territories and Hong Kong Island.

MTR Corporation Limited ("MTRCL") is entrusted with the planning and design of the project. Upon completion of the construction, MTRCL will be granted a service concession for the operation of the railway line while the Administration will receive a service concession payment annually.

*Delay of SCL project*

3. The main construction works of SCL project commenced in 2012. According to the agreement for entrusting construction, the target commissioning date for the Tai Wai to Hung Hom Section is December 2018 while the target commissioning date for the Hung Hom to Admiralty Section is December 2020. According to the information provided by the Administration in November 2015<sup>3</sup>, the Highways Department ("HyD") estimates that the Tai Wai to Hung Hom Section of SCL may have a delay of about 11 months arising from the archaeological works, archaeological discoveries and conservation options for archaeological features at To Kwa Wan Station. HyD will co-ordinate and oversee the construction of SCL so that MTRCL could try to recover some of the delay to the Tai Wai to Hung Hom Section, with a view to commissioning the Tai Wai to Hung Hom Section in 2019 as far as possible.

4. As regards the Hung Hom to Admiralty Section, the commissioning date will be deferred to 2021 to allow flexibility for the topside development of the convention centre at Exhibition Station, to cater for the reclamation works under Wan Chai Development Phase II ("WDII") including the construction of the Central-Wan Chai Bypass tunnel thereof, and the impact due to the large metal object found on the seabed within the reclamation area under WDII.

*Latest cost to complete for SCL project*

5. The estimated construction cost for the entire SCL project is about \$79.8 billion in money-of-the-day ("MOD") prices. As at 30 September 2015, MTRCL estimated that the archaeological works would result in a minimum additional cost of about \$4.1 billion to the Tai Wai to Hung Hom Section of SCL. MTRCL is conducting a cost review of the entire SCL in phases, including the additional construction costs

---

<sup>3</sup> Source: The Administration's paper entitled "Progress update of the construction of the Shatin to Central Link (as at 30 September 2015)" issued in November 2015 [LC Paper No. CB(4)298/15-16(01)]

for Admiralty Station and Ho Man Tin Station, and the additional costs arising from the archaeological and conservation works, the enabling works to cater for the topside development, as well as the deferred site handover. The review is expected to be completed in the first quarter of 2016. MTRCL will then submit the cost review to HyD for scrutiny. As the current contingency of SCL will not be sufficient to meet the additional cost, the Administration will seek additional funding from LegCo in due course in order to proceed with the works.

### KTE project

6. KTE is an approximately 2.6-kilometre long railway extension of the existing Kwun Tong Line running from Yau Ma Tei Station to the new Ho Man Tin Station and Whampoa Station and its proposed alignment plan is at **Appendix II**. Unlike SCL project, KTE project is implemented under the ownership approach. Under this approach, MTRCL will be responsible for the finance, design, construction, operation and maintenance of this railway project and will own the railway.

### *Delay of KTE project*

7. Construction of KTE has commenced in 2011 for completion in August 2015. KTE project was about six months behind schedule as of June 2014, and that the original target of opening KTE in 2015 could not be achieved. According to the information provided by the Administration in November 2015<sup>4</sup>, the target to commission KTE would be in the third or fourth quarter of 2016. MTRCL submitted a revised programme to HyD in October 2015. Based on the information available to HyD, given the substantial completion of the structural works of the platform tunnel in the third quarter of 2015 and on condition that the structural works of the station can be completed in the fourth quarter of 2015, the newly revised target commissioning date of MTRCL would be achievable.

### *Latest cost to complete for KTE project*

8. In 2011, the estimated capital cost of KTE was \$5.3 billion (in December 2009 prices). Owing to the complexity of the project and

---

<sup>4</sup> Source: The Administration's paper entitled "Progress Update of the Construction of the West Island Line, South Island Line (East) and Kwun Tong Line Extension" issued in November 2015 [LC Paper No. CB(4)298/15-16(02)]

continued challenges encountered, as at August 2015, the estimate of the construction cost of KTE had been adjusted upward to \$7.2 billion (in MOD prices).

9. Ho Man Tin Station will be an integrated station connecting both SCL and KTE and providing convenient interchange for passengers travelling on these two railway lines. The construction cost of Ho Man Tin Station is therefore apportioned between the Projects at a ratio of about 74:26 in accordance with the estimated patronage at peak hours at the station. According to the cost estimate in 2011, SCL project has to share about \$2.9 billion (in MOD prices) for the costs of building works, building services works, electrical and mechanical works for the portion of SCL at Ho Man Tin Station. MTRCL advised HyD on 12 August 2015 that the recently completed cost estimate review of KTE indicated that the relevant construction cost of Ho Man Tin Station shared by SCL would still remain within the budget. However, the Essential Public Infrastructure Works ("EPIW") of KTE entrusted by the Administration to MTRCL, may exceed the approved project estimate<sup>5</sup> by about \$75 million. HyD has requested MTRCL to submit further information as soon as possible for scrutiny.

### **The Railway Development Office ("RDO")**

10. RDO of HyD is tasked with overseeing the planning and implementation of new railway projects. It is headed by a Principal Government Engineer (D3) and consists of two groups, each headed by a Government Engineer (D2). The existing organization chart of RDO is at **Appendix III**.

11. At its meeting on 19 December 2008 and 14 January 2009 respectively, the Panel on Transport ("the Panel") and the Establishment Subcommittee ("ESC") examined the Administration's staffing proposal to create, with effect from 1 April 2009, one supernumerary Chief Engineer ("CE") post in RDO of HyD to plan and implement SCL project cum KTE project up to 31 March 2016 ("the staffing proposal").

12. According to the information provided by the Administration in January 2009<sup>6</sup>, an additional supernumerary CE post, to be designated as

---

<sup>5</sup> In 2011, the estimated capital cost of EPIW of KTE was \$826.9 million (in MOD prices).

<sup>6</sup> Source: The Administration's paper on the staffing proposal for the planning and implementation of the proposed Hong Kong Boundary Crossing Facilities of the Hong Kong-Zhuhai-Macao Bridge project and SCL railway project issued in January 2009 [LC Paper No. EC(2008-09)16]

Chief Engineer/Railway Development 1-3 ("CE/RD1-3"), would share the workload in SCL's planning and construction stages. The North-South Line would remain as Chief Engineer/Railway Development 1-2's job, while duties relating to the East-West Line and KTE would be transferred to the proposed CE/RD1-3. Moreover, work relating to the building submissions for projects under the concession approach, i.e. SCL and the Guangzhou-Shenzhen-Hong Kong Express Rail Link, would be assigned to CE/RD1-3. The job description of the proposed post is at **Appendix IV**.

13. At the Panel and ESC meetings, Members in general supported the staffing proposal. Notwithstanding this, they expressed concern about the exceptionally long duration of the proposed supernumerary post and whether it was possible to redeploy existing staff resources to meet the extra workload. To address Members' concerns, the Administration had provided information on the room for staff redeployment at directorate level, and the number of existing supernumerary directorate posts in HyD. On 13 February 2009, the Finance Committee approved the staffing proposal.

### **Major views and concerns about the Projects in recent discussions**

14. Major concerns of members of the Subcommittee on Matters Relating to Railways ("the Subcommittee") about this subject are summarized in the ensuing paragraphs.

#### Delay of the Projects

##### *SCL project*

15. The Subcommittee members expressed grave concern about the delay of the Tai Wai to Hung Hom Section and the Hung Hom to Admiralty Section of SCL project, which were originally scheduled for completion in 2018 and 2020 respectively. In particular, archaeological works and manpower shortage problem would further delay the construction progress of SCL. Besides, members also expressed concern about the monitoring role of the Administration over MTRCL's management of SCL project and the provision of contingency over unexpected project delay. In response, the Administration advised that it monitored the progress of SCL by various means, such as through regular meetings with MTRCL and monthly reports submitted by MTRCL.

HyD also employed an external consultant to assist in the monitoring and verification work. As regards contingency period, MTRCL explained that the estimated completion date of SCL had provided for a contingency, and depending on factors such as nature of works, the contingency period of each works activity would vary. For critical activities, they would have no contingency period.

#### *KTE project*

16. At the Subcommittee meeting on 19 May 2015, members expressed concern that the persistent delay of works at Whampoa Station of KTE had adversely affected the residents and traffic in the vicinity. MTRCL advised that the construction of the platform tunnel at Whampoa Station remained the most critical and challenging part in KTE project, and there were risks of not achieving the target of commissioning by mid-2016. MTRCL noted views expressed by residents in the vicinity of Whampoa Station regarding the construction, and had put in place measures to minimize inconvenience caused to the public, such as shortening the construction works from 24-hour to between 7:00 am and 11:00 pm. It also planned to start reinstating the road surface by the end of 2015.

#### Possible cost overrun

#### *SCL project*

17. At the Subcommittee meetings on 24 November 2014 and 19 May 2015, members expressed concern about the increase in cost arising from archaeological works and discoveries. Some members opined that the Administration should be responsible for such additional cost as heritage conservation should be borne by the community as a whole. However, cost arising from delays caused by MTRCL's project mismanagement should be borne by MTRCL. The Administration advised that the additional cost in respect of archaeological works and discoveries at To Kwa Wan Station would be at least \$4.1 billion. MTRCL responded that there were often unforeseeable situations in construction works, such as unforeseen geological conditions. It would try to implement recovery measures to catch up with the progress arising from such delay.

18. Members also enquired about the proposed additional funding to be sought from LegCo and timetable for the funding application. As

said in paragraph 5 above, MTRCL is conducting a cost review for the entire SCL, which is expected to be completed in the first quarter of 2016.

### *KTE project*

19. In view of the possible delay in the construction of KTE announced in 2014, some Subcommittee members expressed concern about whether the Administration or MTRCL would bear the extra cost to be incurred by the delay in the railway project. In response, the Administration explained that KTE was implemented under ownership approach, which meant MTRCL was responsible for the construction costs. In addition, according to the project agreements signed by the Administration and MTRCL, the Corporation should try its best endeavours to complete the railway project in accordance with the baseline programme. As regards the delay in the construction of KTE, the Administration would follow it up with legal advisers.

### Manpower situation

20. Members at the Subcommittee meeting on 4 July 2014 expressed grave concern about labour shortage problem, which might further delay the construction progress of SCL project. In this connection, members urged the Administration to formulate remedial measures, such as expediting applications under the Supplementary Labour Scheme, to ease the problem. Also, they suggested that relevant bureaux should jointly discuss and review the construction industry's capacity to implement the five railway projects simultaneously. In December 2014, the Administration provided supplementary information<sup>7</sup> updating the Subcommittee that there was a shortfall of 1 521 construction workers for SCL project.

### Increase in the number of entrances at stations

21. At the Subcommittee meeting on 16 April 2010, members passed a motion and urged the Administration and MTRCL to increase the number of entrances at both Ho Man Tin Station and Whampoa Station of KTE project for the convenience of local residents. Members followed up with the Administration regarding the progress on the matter at the

---

<sup>7</sup> Source: The Administration's supplementary information paper on the number of construction personnel short for each of the five new railway projects under construction [LC Paper No. CB(4)307/14-15(01)] issued in December 2014

Subcommittee meeting on 19 May 2015. MTRCL explained that it had taken into account views of the community when planning and designing the entrances of Ho Man Tin Station and Whampoa Station. For Ho Man Tin Station, there would be several entrances connecting estates in the vicinity, such as Ho Man Tin Estate and Oi Man Estate. Besides, there would be four entrances at Whampoa Station, two of which were integrated entrances offering a direct and convenient access between the station and shopping malls and residential blocks in the vicinity.

### **Latest developments**

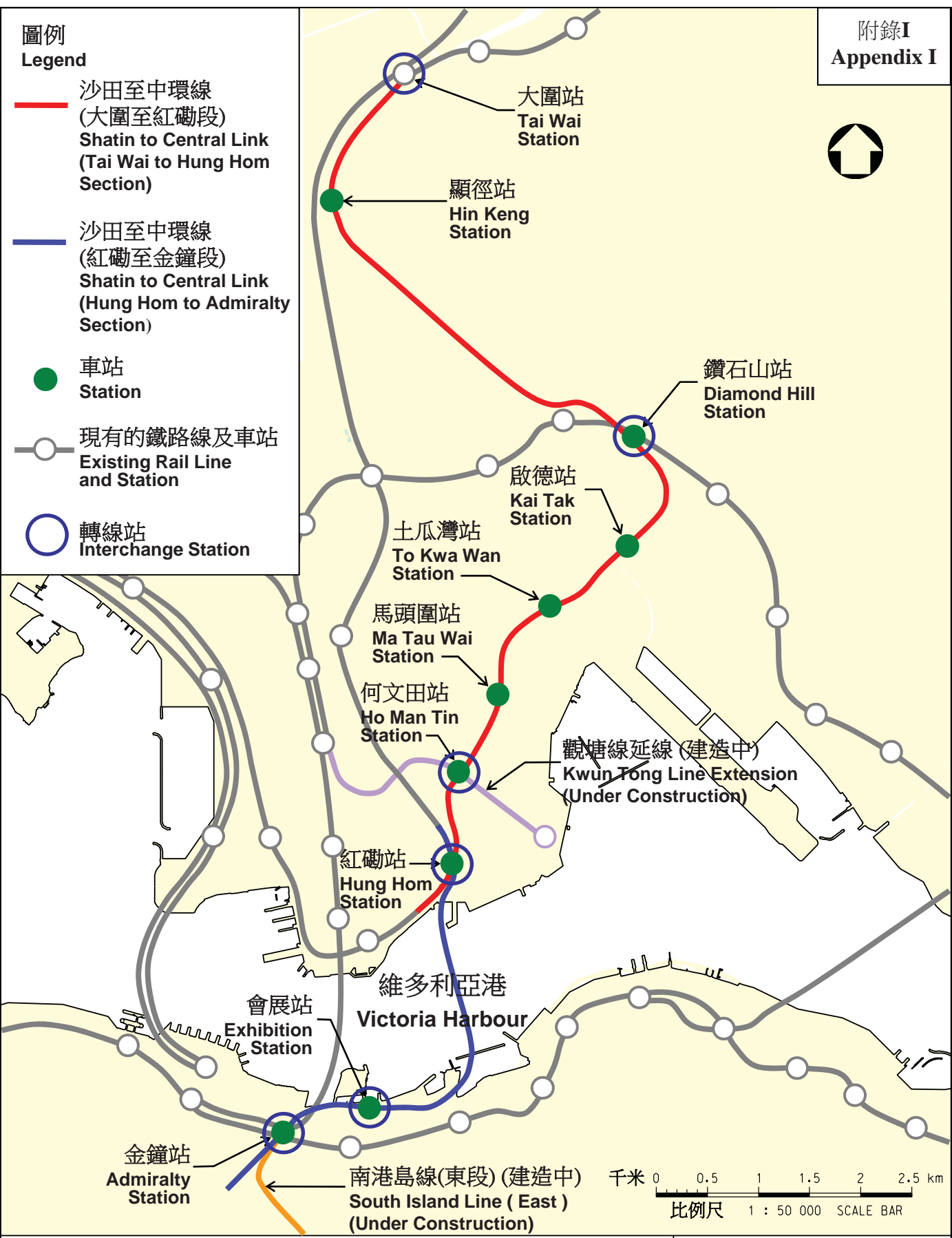
22. The Administration plans to consult the Subcommittee on the proposed extension of one supernumerary directorate post (titled CE/RD1-3) in RDO of HyD to continue with the implementation of the East-West Line of SCL and KTE at the special meeting to be held on 14 December 2015.

### **Relevant papers**

23. A list of relevant papers is at **Appendix V**.

Council Business Division 4  
Legislative Council Secretariat  
11 December 2015





圖則名稱 drawing title  
**沙田至中環線的走線**  
**Alignment of the Shatin to Central Link**

圖號 drawing no.  
**HRWSCL003-SK0437**

版權所有 COPYRIGHT RESERVED

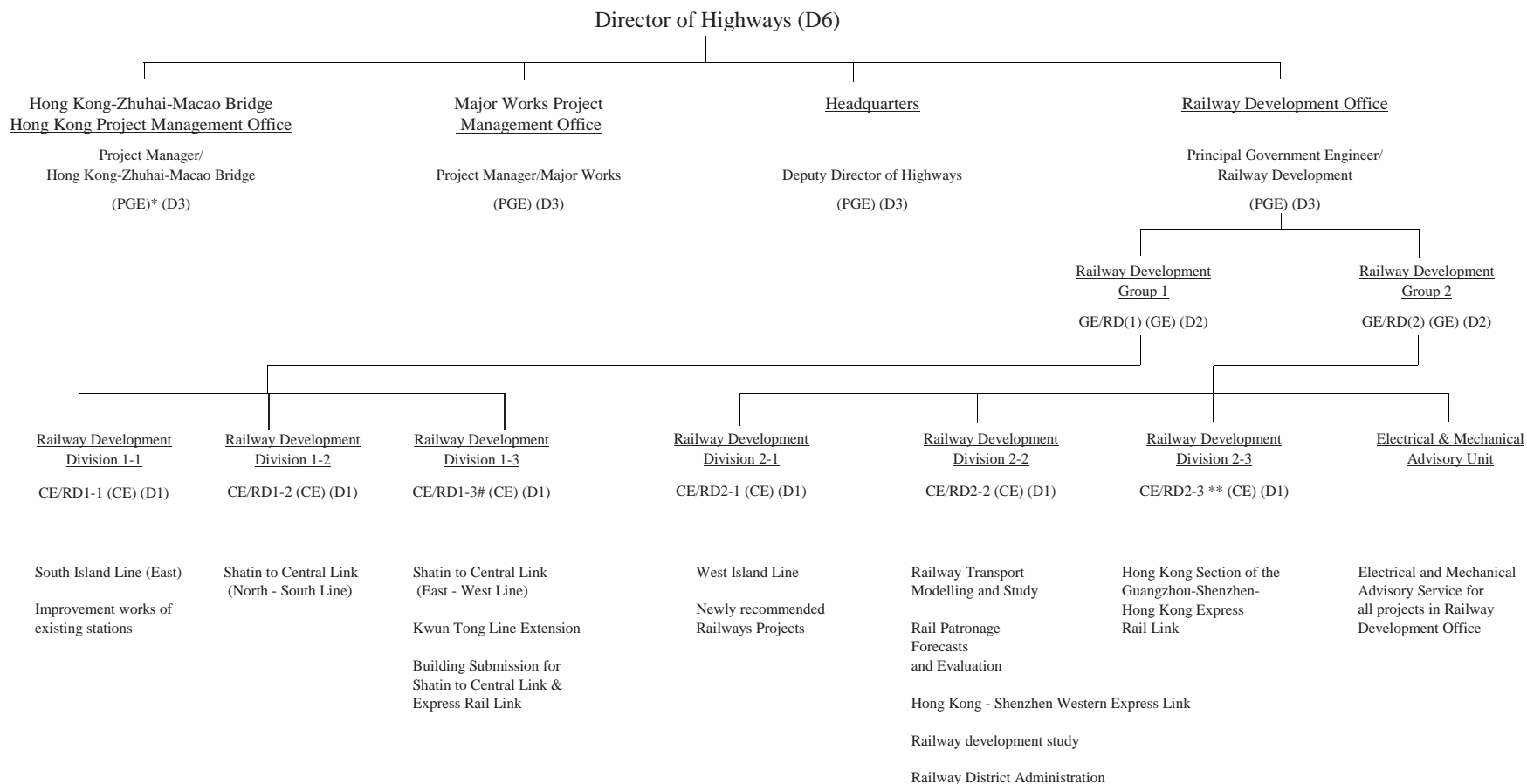
鐵路拓展處 RAILWAY DEVELOPMENT OFFICE

 路政署  
HIGHWAYS DEPARTMENT



觀塘線延線  
KWUN TONG LINE EXTENSION

Existing Organisation Chart of Railway Development Office of Highways Department



Legend

CE - Chief Engineer  
 GE - Government Engineer  
 PGE - Principal Government Engineer  
 RD - Railway Development

\* - Supernumerary PGE post to lapse on 1 January 2018  
 \*\* - Supernumerary CE post to lapse on 7 July 2015  
 # - Supernumerary CE post to lapse on 1 April 2016

**Job Description**  
**Chief Engineer/Railway Development 1-3**

**Rank** : Chief Engineer (D1)

**Responsible to** : Government Engineer/Railway Development (1)

**Main Duties and Responsibilities –**

1. formulating strategies for delivering the SCL Tai Wai to Hung Hom section, Kwun Tong Line Extension and the related essential public infrastructure works (the Project);
2. leading and directing subordinates in the planning, design and implementation of the Project, including public consultation with LegCo and District Councils;
3. providing technical support and advice to the Transport and Housing Bureau to permit policy steers and prepare policy papers and ExCo submissions;
4. administering Public Works Programme items related to the Project;
5. preparing and administering the entrustment agreements and project agreement with the railway corporation, and monitoring the railway corporation on the adoption of appropriate strategy, procedures and programme on the engineering and financial aspects;
6. completing all the works under the statutory process in the gazettal of the railway schemes under the relevant ordinances;
7. managing MTRCL's consultation process and submissions in respect of the SCL and XRL project as if so required by the Building Authority for projects under the ownership approach; and
8. coordinating among other government departments/bureaux and resolving interfacing matters arising from the Project with other development projects to ensure the smooth progress of the Project.

-----

**Staffing proposal relating to the Shatin to Central Link and  
Kwun Tong Line Extension projects**

**List of relevant papers**

Shatin to Central Link project

<b>Date of meeting</b>	<b>Committee</b>	<b>Minutes/Paper</b>	<b>LC Paper No.</b>
16.7.2007	Subcommittee on Matters Relating to Railways	Administration's paper on progress of Shatin to Central Link Project	CB(1)2058/06-07(01) <a href="http://www.legco.gov.hk/yr06-07/english/panels/tp/tp_rdp/papers/tp_rdp0716cb1-2058-1-e.pdf">http://www.legco.gov.hk/yr06-07/english/panels/tp/tp_rdp/papers/tp_rdp0716cb1-2058-1-e.pdf</a>
		Minutes	CB(1)2454/06-07 <a href="http://www.legco.gov.hk/yr06-07/english/panels/tp/tp_rdp/minutes/rd070716.pdf">http://www.legco.gov.hk/yr06-07/english/panels/tp/tp_rdp/minutes/rd070716.pdf</a>
27.3.2008	Subcommittee on Matters Relating to Railways	Legislative Council Brief on Shatin to Central Link and MTR Kwun Tong Line Extension	THB(T)CR 10/1016/99 <a href="http://www.legco.gov.hk/yr07-08/english/panels/tp/tp_rdp/papers/tp_rdp-thbtcr10101699-e.pdf">http://www.legco.gov.hk/yr07-08/english/panels/tp/tp_rdp/papers/tp_rdp-thbtcr10101699-e.pdf</a>
		Administration's paper on funding application for the design of the Shatin to Central Link	CB(1)1036/07-08(03) <a href="http://www.legco.gov.hk/yr07-08/english/panels/tp/tp_rdp/papers/tp_rdp0327cb1-1036-3-e.pdf">http://www.legco.gov.hk/yr07-08/english/panels/tp/tp_rdp/papers/tp_rdp0327cb1-1036-3-e.pdf</a>
		Minutes	CB(1)1374/07-08 <a href="http://www.legco.gov.hk/yr07-08/english/panels/tp/tp_rdp/minutes/rd080327.pdf">http://www.legco.gov.hk/yr07-08/english/panels/tp/tp_rdp/minutes/rd080327.pdf</a>

Date of meeting	Committee	Minutes/Paper	LC Paper No.
11.3.2009	Council meeting	Hon Starry LEE raised a question on the impact of infrastructural projects in To Kwa Wan and Ma Tau Kok districts	<a href="http://www.info.gov.hk/gia/general/200903/11/P200903110149.htm">http://www.info.gov.hk/gia/general/200903/11/P200903110149.htm</a>
31.3.2009	Subcommittee on Matters Relating to Railways	Administration's paper on progress of Shatin to Central Link Project	CB(1)1137/08-09(05) <a href="http://www.legco.gov.hk/yr08-09/english/panels/tp/tp_rdp/papers/tp_rdp0331cb1-1137-5-e.pdf">http://www.legco.gov.hk/yr08-09/english/panels/tp/tp_rdp/papers/tp_rdp0331cb1-1137-5-e.pdf</a>
		Minutes	CB(1)1544/08-09 <a href="http://www.legco.gov.hk/yr08-09/english/panels/tp/tp_rdp/minutes/rdp20090331.pdf">http://www.legco.gov.hk/yr08-09/english/panels/tp/tp_rdp/minutes/rdp20090331.pdf</a>
28.10.2009	Council meeting	Hon James TO raised a question on the construction of Shatin to Central Link railway in the Kai Tak Development Area	<a href="http://www.info.gov.hk/gia/general/200910/28/P200910280123.htm">http://www.info.gov.hk/gia/general/200910/28/P200910280123.htm</a>
18.11.2009	Council meeting	Hon Mrs Regina IP raised a question on the temporary supporting facilities of Shatin to Central Link	<a href="http://www.info.gov.hk/gia/general/200911/18/P200911180197.htm">http://www.info.gov.hk/gia/general/200911/18/P200911180197.htm</a>
20.1.2010	Council meeting	Hon Starry LEE raised a question on the temporary works area of Shatin to Central Link	<a href="http://www.info.gov.hk/gia/general/201001/20/P201001200116.htm">http://www.info.gov.hk/gia/general/201001/20/P201001200116.htm</a>



Date of meeting	Committee	Minutes/Paper	LC Paper No.
4.6.2010	Subcommittee on Matters Relating to Railways	Administration's paper on funding application – protection works for Shatin to Central Link in Wan Chai Development Phase II	CB(1)2088/09-10(02) <a href="http://www.legco.gov.hk/yr09-10/english/panels/tp/tp_rdp/papers/tp_rdp0604cb1-2088-2-e.pdf">http://www.legco.gov.hk/yr09-10/english/panels/tp/tp_rdp/papers/tp_rdp0604cb1-2088-2-e.pdf</a>
		Minutes	CB(1)2844/09-10 <a href="http://www.legco.gov.hk/yr09-10/english/panels/tp/tp_rdp/minutes/rdp20100604.pdf">http://www.legco.gov.hk/yr09-10/english/panels/tp/tp_rdp/minutes/rdp20100604.pdf</a>
4.11.2010	Subcommittee on Matters Relating to Railways	Administration's paper on progress of Shatin to Central Link Project	CB(1)277/10-11(01) <a href="http://www.legco.gov.hk/yr10-11/english/panels/tp/tp_rdp/papers/tp_rdp1104cb1-277-1-e.pdf">http://www.legco.gov.hk/yr10-11/english/panels/tp/tp_rdp/papers/tp_rdp1104cb1-277-1-e.pdf</a>
		Minutes	CB(1)1068/10-11 <a href="http://www.legco.gov.hk/yr10-11/english/panels/tp/tp_rdp/minutes/rdp20101104.pdf">http://www.legco.gov.hk/yr10-11/english/panels/tp/tp_rdp/minutes/rdp20101104.pdf</a>
6.12.2010	Subcommittee on Matters Relating to Railways	Administration's paper on funding application – advance works for Shatin to Central Link	CB(1)603/10-11(01) <a href="http://www.legco.gov.hk/yr10-11/english/panels/tp/tp_rdp/papers/tp_rdp1206cb1-603-1-e.pdf">http://www.legco.gov.hk/yr10-11/english/panels/tp/tp_rdp/papers/tp_rdp1206cb1-603-1-e.pdf</a>
		Minutes	CB(1)1161/10-11 <a href="http://www.legco.gov.hk/yr10-11/english/panels/tp/tp_rdp/minutes/rdp20101206.pdf">http://www.legco.gov.hk/yr10-11/english/panels/tp/tp_rdp/minutes/rdp20101206.pdf</a>

Date of meeting	Committee	Minutes/Paper	LC Paper No.
7.1.2011	Subcommittee on Matters Relating to Railways	Administration's supplementary information paper on funding application – advance works for Shatin to Central Link	CB(1)987/10-11(01) <a href="http://www.legco.gov.hk/yr10-11/english/panels/tp/tp_rdp/papers/tp_rdp0107cb1-987-1-e.pdf">http://www.legco.gov.hk/yr10-11/english/panels/tp/tp_rdp/papers/tp_rdp0107cb1-987-1-e.pdf</a>
		Minutes	CB(1)1547/10-11 <a href="http://www.legco.gov.hk/yr10-11/english/panels/tp/tp_rdp/minutes/rdp20110107.pdf">http://www.legco.gov.hk/yr10-11/english/panels/tp/tp_rdp/minutes/rdp20110107.pdf</a>
18.5.2011	Council meeting	Hon Starry LEE raised a question on the impact on various railway projects due to recent court judgement on environmental impact assessment	<a href="http://www.info.gov.hk/gia/general/201105/18/P201105180192.htm">http://www.info.gov.hk/gia/general/201105/18/P201105180192.htm</a>
6.7.2011	Council meeting	Hon CHAN Hak-kan raised a question on the programme for Shatin to Central Link project	<a href="http://www.info.gov.hk/gia/general/201107/06/P201107060194.htm">http://www.info.gov.hk/gia/general/201107/06/P201107060194.htm</a>
2.3.2012	Subcommittee on Matters Relating to Railways	Administration's paper on progress of the Shatin to Central Link	CB(1)1154/11-12(03) <a href="http://www.legco.gov.hk/yr11-12/english/panels/tp/tp_rdp/papers/tp_rdp0302cb1-1154-3-e.pdf">http://www.legco.gov.hk/yr11-12/english/panels/tp/tp_rdp/papers/tp_rdp0302cb1-1154-3-e.pdf</a>



Date of meeting	Committee	Minutes/Paper	LC Paper No.
		Administration's supplementary information paper on Shatin to Central Link – Progress report (follow-up paper)	CB(1)1340/11-12(01) <a href="http://www.legco.gov.hk/yr11-12/english/panels/tp/tp_rdp/papers/tp_rdp0302cb1-1340-1-e.pdf">http://www.legco.gov.hk/yr11-12/english/panels/tp/tp_rdp/papers/tp_rdp0302cb1-1340-1-e.pdf</a>
		Minutes	CB(1)1772/11-12 <a href="http://www.legco.gov.hk/yr11-12/english/panels/tp/tp_rdp/minutes/rdp20120302.pdf">http://www.legco.gov.hk/yr11-12/english/panels/tp/tp_rdp/minutes/rdp20120302.pdf</a>
23.3.2012	Subcommittee on Matters Relating to Railways	Administration's paper on Shatin to Central Link – Funding Application for the Main Works	CB(1)1326/11-12(01) <a href="http://www.legco.gov.hk/yr11-12/english/panels/tp/tp_rdp/papers/tp_rdp0323cb1-1326-1-e.pdf">http://www.legco.gov.hk/yr11-12/english/panels/tp/tp_rdp/papers/tp_rdp0323cb1-1326-1-e.pdf</a>
		Administration's supplementary information paper on Shatin to Central Link – Progress report (follow-up paper)	CB(1)1340/11-12(01) <a href="http://www.legco.gov.hk/yr11-12/english/panels/tp/tp_rdp/papers/tp_rdp0302cb1-1340-1-e.pdf">http://www.legco.gov.hk/yr11-12/english/panels/tp/tp_rdp/papers/tp_rdp0302cb1-1340-1-e.pdf</a>
		Minutes	CB(1)2479/11-12 <a href="http://www.legco.gov.hk/yr11-12/english/panels/tp/tp_rdp/minutes/rdp20120323.pdf">http://www.legco.gov.hk/yr11-12/english/panels/tp/tp_rdp/minutes/rdp20120323.pdf</a>
30.3.2012	Subcommittee on Matters Relating to Railways	Legislative Council Brief: Shatin to Central Link – authorization of scheme following receipt of objections	THB(T)CR 10/1016/99 <a href="http://www.legco.gov.hk/yr11-12/english/panels/tp/tp_rdp/papers/tp_rdp0330-thbcr10101699-e.pdf">http://www.legco.gov.hk/yr11-12/english/panels/tp/tp_rdp/papers/tp_rdp0330-thbcr10101699-e.pdf</a>

Date of meeting	Committee	Minutes/Paper	LC Paper No.
		Administration's supplementary information paper on issues raised by the Subcommittee at its meeting on 23 March 2012	CB(1)1434/11-12(01) <a href="http://www.legco.gov.hk/yr11-12/english/panels/tp/tp_rdp/papers/tp_rdp0330cb1-1434-1-e.pdf">http://www.legco.gov.hk/yr11-12/english/panels/tp/tp_rdp/papers/tp_rdp0330cb1-1434-1-e.pdf</a>
		Minutes	CB(1)2480/11-12 <a href="http://www.legco.gov.hk/yr11-12/english/panels/tp/tp_rdp/minutes/rdp20120330.pdf">http://www.legco.gov.hk/yr11-12/english/panels/tp/tp_rdp/minutes/rdp20120330.pdf</a>
18.4.2012	Public Works Subcommittee	Administration's paper on "61TR – Shatin to Central Link – construction of railway works – remaining works"	PWSC(2012-13)1 <a href="http://www.legco.gov.hk/yr11-12/english/fc/pwsc/papers/p12-01e.pdf">http://www.legco.gov.hk/yr11-12/english/fc/pwsc/papers/p12-01e.pdf</a>
		Administration's paper on "62TR – Shatin to Central Link – construction of non-railway works – remaining works"	PWSC(2012-13)2 <a href="http://www.legco.gov.hk/yr11-12/english/fc/pwsc/papers/p12-02e.pdf">http://www.legco.gov.hk/yr11-12/english/fc/pwsc/papers/p12-02e.pdf</a>
		Minutes	PWSC57/11-12 <a href="http://www.legco.gov.hk/yr11-12/english/fc/pwsc/minutes/pwsc20120418.pdf">http://www.legco.gov.hk/yr11-12/english/fc/pwsc/minutes/pwsc20120418.pdf</a>
11.5.2012	Finance Committee	Minutes	FC183/11-12 <a href="http://www.legco.gov.hk/yr11-12/english/fc/fc/minutes/fc20120511.pdf">http://www.legco.gov.hk/yr11-12/english/fc/fc/minutes/fc20120511.pdf</a>

Date of meeting	Committee	Minutes/Paper	LC Paper No.
21.5.2014	Council Meeting	Hon CHAN Hak-kan raised a question on monuments and antiques unearthed at railway construction Sites	<a href="http://www.info.gov.hk/gia/general/201405/21/P201405210429.htm">http://www.info.gov.hk/gia/general/201405/21/P201405210429.htm</a>
4.6.2014	Council Meeting	Dr Hon CHIANG Lai-wan raised a question on construction works of Shatin to Central Link	<a href="http://www.info.gov.hk/gia/general/201406/04/P201406040323.htm">http://www.info.gov.hk/gia/general/201406/04/P201406040323.htm</a>
18.6.2014	Council Meeting	Hon Christopher CHUNG raised a question on Antiquities and monuments excavated from works site of MTR Shatin to Central Link	<a href="http://www.info.gov.hk/gia/general/201406/18/P201406180605.htm">http://www.info.gov.hk/gia/general/201406/18/P201406180605.htm</a>
4.7.2014	Subcommittee on Matters Relating to Railways	Administration's paper on progress update of the construction of the Shatin to Central Link	CB(1)1722/13-14(03)  <a href="http://www.legco.gov.hk/yr13-14/english/panels/tp/tp_rdp/papers/tp_rdp0704cb1-1722-3-e.pdf">http://www.legco.gov.hk/yr13-14/english/panels/tp/tp_rdp/papers/tp_rdp0704cb1-1722-3-e.pdf</a>
		Administration's supplementary information paper on the number of construction personnel short for each of the five new railway projects under construction (follow-up paper)	CB(4)307/14-15(01)  <a href="http://www.legco.gov.hk/yr13-14/english/panels/tp/tp_rdp/papers/tp_rdp0704cb4-307-1-e.pdf">http://www.legco.gov.hk/yr13-14/english/panels/tp/tp_rdp/papers/tp_rdp0704cb4-307-1-e.pdf</a>

Date of meeting	Committee	Minutes/Paper	LC Paper No.
		Minutes	CB(1)139/14-15  <a href="http://www.legco.gov.hk/yr13-14/english/panels/tp/tp_rdp/minutes/rdp20140704.pdf">http://www.legco.gov.hk/yr13-14/english/panels/tp/tp_rdp/minutes/rdp20140704.pdf</a>
24.11.2014	Subcommittee on Matters Relating to Railways	Administration's paper on progress update of the Shatin to Central Link, South Island Line (East) and Kwun Tong Line Extension	CB(1)260/14-15(03)  <a href="http://www.legco.gov.hk/yr14-15/english/panels/tp/tp_rdp/papers/tp_rdp20141124cb1-260-3-e.pdf">http://www.legco.gov.hk/yr14-15/english/panels/tp/tp_rdp/papers/tp_rdp20141124cb1-260-3-e.pdf</a>
		Administration's paper on archaeological features discovered at To Kwa Wan Station of the Shatin to Central Link and their proposed preliminary conservation and interpretation plans	CB(1)273/14-15(01)  <a href="http://www.legco.gov.hk/yr14-15/chinese/panels/tp/tp_rdp/papers/tp_rdp20141124cb1-273-1-ec.pdf">http://www.legco.gov.hk/yr14-15/chinese/panels/tp/tp_rdp/papers/tp_rdp20141124cb1-273-1-ec.pdf</a>
		Administration's supplementary information paper on the construction of the Shatin to Central Link (follow-up paper)	CB(4)227/14-15(01)  <a href="http://www.legco.gov.hk/yr14-15/english/panels/tp/tp_rdp/papers/tp_rdp20141124cb4-227-1-e.pdf">http://www.legco.gov.hk/yr14-15/english/panels/tp/tp_rdp/papers/tp_rdp20141124cb4-227-1-e.pdf</a>
		Minutes	CB(4)491/14-15  <a href="http://www.legco.gov.hk/yr14-15/english/panels/tp/tp_rdp/minutes/rdp20141124.pdf">http://www.legco.gov.hk/yr14-15/english/panels/tp/tp_rdp/minutes/rdp20141124.pdf</a>

Date of meeting	Committee	Minutes/Paper	LC Paper No.
3.12.2014	Council Meeting	Dr Hon LAM Tai-fai raised a question on cost overruns and delay of major infrastructure projects	<a href="http://www.info.gov.hk/gia/general/201412/03/P201412030932.htm">http://www.info.gov.hk/gia/general/201412/03/P201412030932.htm</a>
17.12.2014	Council Meeting	Hon James TO raised a question on archaeological excavation at To Kwa Wan Station of Shatin to Central Link	<a href="http://www.info.gov.hk/gia/general/201412/17/P201412170465.htm">http://www.info.gov.hk/gia/general/201412/17/P201412170465.htm</a>
6.3.2015	Subcommittee on Matters Relating to Railways	Administration's paper on progress update of the construction of the Shatin to Central Link (as at 31 December 2014)	CB(4)596/14-15(01) <a href="http://www.legco.gov.hk/yr14-15/english/panels/tp/tp_rdp/papers/tp_rdp4-596-1-e.pdf">http://www.legco.gov.hk/yr14-15/english/panels/tp/tp_rdp/papers/tp_rdp4-596-1-e.pdf</a>
		Minutes	CB(4)1108/14-15 <a href="http://www.legco.gov.hk/yr14-15/english/panels/tp/tp_rdp/minutes/rdp20150306.pdf">http://www.legco.gov.hk/yr14-15/english/panels/tp/tp_rdp/minutes/rdp20150306.pdf</a>
19.5.2015	Subcommittee on Matters Relating to Railways	Administration's paper on progress update of the construction of the Shatin to Central Link (as at 31 March 2015)	CB(4)954/14-15(03) <a href="http://www.legco.gov.hk/yr14-15/english/panels/tp/tp_rdp/papers/tp_rdp20150519cb4-954-3-e.pdf">http://www.legco.gov.hk/yr14-15/english/panels/tp/tp_rdp/papers/tp_rdp20150519cb4-954-3-e.pdf</a>
		Minutes	CB(4)62/15-16 <a href="http://www.legco.gov.hk/yr14-15/english/panels/tp/tp_rdp/minutes/rdp20150519.pdf">http://www.legco.gov.hk/yr14-15/english/panels/tp/tp_rdp/minutes/rdp20150519.pdf</a>

Date of meeting	Committee	Minutes/Paper	LC Paper No.
--	Subcommittee on Matters Relating to Railways	Administration's paper on the progress update of the construction of the Shatin to Central Link (as at 30 June 2015)	CB(4)1412/14-15(03) <a href="http://www.legco.gov.hk/yr14-15/english/panels/tp/tp_rdp/papers/tp_rdp4-1412-3-e.pdf">http://www.legco.gov.hk/yr14-15/english/panels/tp/tp_rdp/papers/tp_rdp4-1412-3-e.pdf</a>
14.12.2015	Subcommittee on Matters Relating to Railways	Administration's paper on the progress update of the construction of the Shatin to Central Link (as at 30 September 2015)	CB(4)298/15-16(01) <a href="http://www.legco.gov.hk/yr15-16/english/panels/tp/tp_rdp/papers/tp_rdp4-298-1-e.pdf">http://www.legco.gov.hk/yr15-16/english/panels/tp/tp_rdp/papers/tp_rdp4-298-1-e.pdf</a>

Kwun Tong Line Extension Link

Date of meeting	Committee	Minutes/Paper	LC Paper No.
27.3.2008	Subcommittee on Matters Relating to Railways	Legislative Council Brief on Shatin to Central Link and MTR Kwun Tong Line Extension	THB(T)CR10/1016/99 <a href="http://www.legco.gov.hk/yr07-08/english/panels/tp/tp_rdp/papers/tp_rdp-thbcr10101699-e.pdf">http://www.legco.gov.hk/yr07-08/english/panels/tp/tp_rdp/papers/tp_rdp-thbcr10101699-e.pdf</a>
		Administration's paper on funding application for the design of the Shatin to Central Link	CB(1)1036/07-08(03) <a href="http://www.legco.gov.hk/yr07-08/english/panels/tp/tp_rdp/papers/tp_rdp0327cb1-1036-3-e.pdf">http://www.legco.gov.hk/yr07-08/english/panels/tp/tp_rdp/papers/tp_rdp0327cb1-1036-3-e.pdf</a>
		Administration's supplementary paper on Shatin to Central Link and MTR Kwun Tong Line Extension	CB(1)1377/07-08(01) <a href="http://www.legco.gov.hk/yr07-08/english/panels/tp/tp_rdp/papers/tp_rdp0327cb1-1377-1-e.pdf">http://www.legco.gov.hk/yr07-08/english/panels/tp/tp_rdp/papers/tp_rdp0327cb1-1377-1-e.pdf</a>

Date of meeting	Committee	Minutes/Paper	LC Paper No.
		Minutes	CB(1)1374/07-08  <a href="http://www.legco.gov.hk/yr07-08/english/panels/tp/tp_rdp/minutes/rd080327.pdf">http://www.legco.gov.hk/yr07-08/english/panels/tp/tp_rdp/minutes/rd080327.pdf</a>
17.9.2009	Subcommittee on Matters Relating to Railways	Administration's paper on progress of the Kwun Tong Line Extension	CB(1)2582/08-09(04)  <a href="http://www.legco.gov.hk/yr08-09/english/panels/tp/tp_rdp/papers/tp_rdp0917cb1-2582-4-e.pdf">http://www.legco.gov.hk/yr08-09/english/panels/tp/tp_rdp/papers/tp_rdp0917cb1-2582-4-e.pdf</a>
		Minutes	CB(1)920/09-10  <a href="http://www.legco.gov.hk/yr08-09/english/panels/tp/tp_rdp/minutes/rdp20090917.pdf">http://www.legco.gov.hk/yr08-09/english/panels/tp/tp_rdp/minutes/rdp20090917.pdf</a>
16.12.2009	Council Meeting	Hon Starry LEE Wai-king raised a question on Kwun Tong Line Extension's pedestrian links	<a href="http://www.info.gov.hk/gia/general/200912/16/P200912160142.htm">http://www.info.gov.hk/gia/general/200912/16/P200912160142.htm</a>
16.4.2010	Subcommittee on Matters Relating to Railways	Administration's paper on progress report on the Kwun Tong Line Extension	CB(1)1573/09-10(03)  <a href="http://www.legco.gov.hk/yr09-10/english/panels/tp/tp_rdp/papers/tp_rdp0416cb1-1573-3-e.pdf">http://www.legco.gov.hk/yr09-10/english/panels/tp/tp_rdp/papers/tp_rdp0416cb1-1573-3-e.pdf</a>
		Administration's follow up paper on the Kwun Tong Line Extension	CB(1)2141/09-10(01)  <a href="http://www.legco.gov.hk/yr09-10/english/panels/tp/tp_rdp/papers/tp_rdp0416cb1-2141-1-e.pdf">http://www.legco.gov.hk/yr09-10/english/panels/tp/tp_rdp/papers/tp_rdp0416cb1-2141-1-e.pdf</a>
		Minutes	CB(1)2071/09-10  <a href="http://www.legco.gov.hk/yr09-10/english/panels/tp/tp_rdp/minutes/rdp20100416.pdf">http://www.legco.gov.hk/yr09-10/english/panels/tp/tp_rdp/minutes/rdp20100416.pdf</a>

Date of meeting	Committee	Minutes/Paper	LC Paper No.
6.7.2010 14.7.2010	Subcommittee on Matters Relating to Railways	Administration's paper on progress report on the Kwun Tong Line Extension	CB(1)2290/09-10(03)  <a href="http://www.legco.gov.hk/yr09-10/english/panels/tp/tp_rdp/papers/tp_rdp0706cb1-2290-3-e.pdf">http://www.legco.gov.hk/yr09-10/english/panels/tp/tp_rdp/papers/tp_rdp0706cb1-2290-3-e.pdf</a>
		Minutes	CB(1)45/10-11  <a href="http://www.legco.gov.hk/yr09-10/english/panels/tp/tp_rdp/minutes/rdp20100706.pdf">http://www.legco.gov.hk/yr09-10/english/panels/tp/tp_rdp/minutes/rdp20100706.pdf</a>  CB(1)47/10-11  <a href="http://www.legco.gov.hk/yr09-10/english/panels/tp/tp_rdp/minutes/rdp20100714.pdf">http://www.legco.gov.hk/yr09-10/english/panels/tp/tp_rdp/minutes/rdp20100714.pdf</a>
6.12.2010 16.12.2010	Subcommittee on Matters Relating to Railways	Legislative Council Brief on Kwun Tong Line Extension – Authorization of Scheme Following Receipt of Objections	<a href="http://www.legco.gov.hk/yr10-11/english/panels/tp/tp_rdp/papers/tp_rdp1206-thb20101130-e.pdf">http://www.legco.gov.hk/yr10-11/english/panels/tp/tp_rdp/papers/tp_rdp1206-thb20101130-e.pdf</a>
		Administration's paper entitled "Progress Report of Kwun Tong Line Extension and Funding Application for Essential Public Infrastructure Works"	CB(1)603/10-11(03)  <a href="http://www.legco.gov.hk/yr10-11/english/panels/tp/tp_rdp/papers/tp_rdp1206cb1-603-3-e.pdf">http://www.legco.gov.hk/yr10-11/english/panels/tp/tp_rdp/papers/tp_rdp1206cb1-603-3-e.pdf</a>



Date of meeting	Committee	Minutes/Paper	LC Paper No.
		Minutes	CB(1)1161/10-11 <a href="http://www.legco.gov.hk/yr10-11/english/panels/tp/tp_rdp/minutes/rdp20101206.pdf">http://www.legco.gov.hk/yr10-11/english/panels/tp/tp_rdp/minutes/rdp20101206.pdf</a> CB(1)1918/10-11 <a href="http://www.legco.gov.hk/yr10-11/english/panels/tp/tp_rdp/minutes/rdp20101216.pdf">http://www.legco.gov.hk/yr10-11/english/panels/tp/tp_rdp/minutes/rdp20101216.pdf</a>
19.1.2011	Public Works Subcommittee	Kwun Tong Line Extension – essential public infrastructure works	PWSC(2010-11)32 <a href="http://www.legco.gov.hk/yr10-11/english/fc/pwsc/papers/p10-32e.pdf">http://www.legco.gov.hk/yr10-11/english/fc/pwsc/papers/p10-32e.pdf</a>
		Minutes	PWSC39/10-11 <a href="http://www.legco.gov.hk/yr10-11/english/fc/pwsc/minutes/pwsc20110119.pdf">http://www.legco.gov.hk/yr10-11/english/fc/pwsc/minutes/pwsc20110119.pdf</a>
15.4.2011	Finance Committee	Minutes	FC118/10-11 <a href="http://www.legco.gov.hk/yr10-11/english/fc/fc/minutes/fc20110415.pdf">http://www.legco.gov.hk/yr10-11/english/fc/fc/minutes/fc20110415.pdf</a>
17.6.2011	Subcommittee on Matters Relating to Railways	Legislative Council Brief on the Kwun Tong Line Extension funding arrangement	<a href="http://www.legco.gov.hk/yr10-11/english/panels/tp/tp_rdp/papers/tp_rdp-thb201105-e.pdf">http://www.legco.gov.hk/yr10-11/english/panels/tp/tp_rdp/papers/tp_rdp-thb201105-e.pdf</a>
		Minutes	CB(1)414 /11-12 <a href="http://www.legco.gov.hk/yr10-11/english/panels/tp/tp_rdp/minutes/rdp20110617.pdf">http://www.legco.gov.hk/yr10-11/english/panels/tp/tp_rdp/minutes/rdp20110617.pdf</a>

Date of meeting	Committee	Minutes/Paper	LC Paper No.
13.1.2012	Subcommittee on Matters Relating to Railways	MTRCL's paper on the design of next generation of railway stations and update on retrofitting platform screen doors	CB(1)785/11-12(03) <a href="http://www.legco.gov.hk/yr11-12/english/panels/tp/tp_rdp/papers/tp_rdp0113cb1-785-3-e.pdf">http://www.legco.gov.hk/yr11-12/english/panels/tp/tp_rdp/papers/tp_rdp0113cb1-785-3-e.pdf</a>
		Minutes	CB(1)2461/11-12 <a href="http://www.legco.gov.hk/yr11-12/english/panels/tp/tp_rdp/minutes/rdp20120113.pdf">http://www.legco.gov.hk/yr11-12/english/panels/tp/tp_rdp/minutes/rdp20120113.pdf</a>
25.4.2012	Council Meeting	Hon Paul CHAN Mo-po raised a question on MTR property development	<a href="http://www.info.gov.hk/gia/general/201204/25/P201204250310.htm">http://www.info.gov.hk/gia/general/201204/25/P201204250310.htm</a>
22.5.2012	Subcommittee on Matters Relating to Railways	Administration's paper on the environmental measures for new railway projects	CB(1)1832/11-12(01) <a href="http://www.legco.gov.hk/yr11-12/english/panels/tp/tp_rdp/papers/tp_rdp0522cb1-1832-1-e.pdf">http://www.legco.gov.hk/yr11-12/english/panels/tp/tp_rdp/papers/tp_rdp0522cb1-1832-1-e.pdf</a>
		Minutes	CB(1)2542/11-12 <a href="http://www.legco.gov.hk/yr11-12/english/panels/tp/tp_rdp/minutes/rdp20120522.pdf">http://www.legco.gov.hk/yr11-12/english/panels/tp/tp_rdp/minutes/rdp20120522.pdf</a>
8.5.2013	Council Meeting	Hon TANG Ka-piu raised a question on new MTR fares and concessions	<a href="http://www.info.gov.hk/gia/general/201305/08/P201305080200.htm">http://www.info.gov.hk/gia/general/201305/08/P201305080200.htm</a>

Date of meeting	Committee	Minutes/Paper	LC Paper No.
17.6.2014	Subcommittee on Matters Relating to Railways	Administration's paper on the progress update of the construction of the West Island Line, South Island Line (East) and Kwun Tong Line Extension	CB(1)1604/13-14(01) <a href="http://www.legco.gov.hk/yr13-14/english/panels/tp/tp_rdp/papers/tp_rdp0617cb1-1604-1-e.pdf">http://www.legco.gov.hk/yr13-14/english/panels/tp/tp_rdp/papers/tp_rdp0617cb1-1604-1-e.pdf</a>
		Administration's supplementary information paper on the progress update of the construction of the West Island Line, South Island Line (East) and Kwun Tong Line Extension (follow-up paper)	CB(4)317/14-15(01) <a href="http://www.legco.gov.hk/yr13-14/english/panels/tp/tp_rdp/papers/tp_rdp0617cb4-317-1-e.pdf">http://www.legco.gov.hk/yr13-14/english/panels/tp/tp_rdp/papers/tp_rdp0617cb4-317-1-e.pdf</a>
		Minutes	CB(1)38/14-15 <a href="http://www.legco.gov.hk/yr13-14/english/panels/tp/tp_rdp/minutes/rdp20140617.pdf">http://www.legco.gov.hk/yr13-14/english/panels/tp/tp_rdp/minutes/rdp20140617.pdf</a>
4.7.2014	Subcommittee on Matters Relating to Railways	Administration's supplementary information paper on the number of construction personnel short for each of the five new railway projects under construction (follow-up paper)	CB(4)307/14-15(01) <a href="http://www.legco.gov.hk/yr13-14/english/panels/tp/tp_rdp/papers/tp_rdp0704cb4-307-1-e.pdf">http://www.legco.gov.hk/yr13-14/english/panels/tp/tp_rdp/papers/tp_rdp0704cb4-307-1-e.pdf</a>

Date of meeting	Committee	Minutes/Paper	LC Paper No.
24.11.2014	Subcommittee on Matters Relating to Railways	Administration's paper on progress update and commissioning arrangement of the West Island Line	CB(1)204/14-15(01) <a href="http://www.legco.gov.hk/yr14-15/english/panels/tp/tp_rdp/papers/tp_rdp20141124cb1-204-1-e.pdf">http://www.legco.gov.hk/yr14-15/english/panels/tp/tp_rdp/papers/tp_rdp20141124cb1-204-1-e.pdf</a>
		Administration's paper on progress update of the Shatin to Central Link, South Island Line (East) and Kwun Tong Line Extension	CB(1)260/14-15(03) <a href="http://www.legco.gov.hk/yr14-15/english/panels/tp/tp_rdp/papers/tp_rdp20141124cb1-260-3-e.pdf">http://www.legco.gov.hk/yr14-15/english/panels/tp/tp_rdp/papers/tp_rdp20141124cb1-260-3-e.pdf</a>
		Minutes	CB(4)491/14-15 <a href="http://www.legco.gov.hk/yr14-15/english/panels/tp/tp_rdp/minutes/rdp20141124.pdf">http://www.legco.gov.hk/yr14-15/english/panels/tp/tp_rdp/minutes/rdp20141124.pdf</a>
2.1.2015	Subcommittee on Matters Relating to Railways	Administration's paper on progress update of the South Island Line (East) and Kwun Tong Line Extension	CB(4)287/14-15(03) <a href="http://www.legco.gov.hk/yr14-15/english/panels/tp/tp_rdp/papers/tp_rdp20150102cb4-287-3-e.pdf">http://www.legco.gov.hk/yr14-15/english/panels/tp/tp_rdp/papers/tp_rdp20150102cb4-287-3-e.pdf</a>
		Administration's supplementary information on the progress update of the construction of the South Island Line (East) and Kwun Tong Line Extension (follow-up paper)	CB(4)1469/14-15(01) <a href="http://www.legco.gov.hk/yr14-15/english/panels/tp/tp_rdp/papers/tp_rdp20150102cb4-1469-1-e.pdf">http://www.legco.gov.hk/yr14-15/english/panels/tp/tp_rdp/papers/tp_rdp20150102cb4-1469-1-e.pdf</a>

Date of meeting	Committee	Minutes/Paper	LC Paper No.
		Minutes	CB(4)623/14-15  <a href="http://www.legco.gov.hk/yr14-15/english/panels/tp/tp_rdp/minutes/rdp20150102.pdf">http://www.legco.gov.hk/yr14-15/english/panels/tp/tp_rdp/minutes/rdp20150102.pdf</a>
19.5.2015	Subcommittee on Matters Relating to Railways	Administration's paper on the progress update of the construction of the West Island Line, South Island Line (East) and Kwun Tong Line Extension	CB(4)954/14-15(05)  <a href="http://www.legco.gov.hk/yr14-15/english/panels/tp/tp_rdp/papers/tp_rdp20150519cb4-954-5-e.pdf">http://www.legco.gov.hk/yr14-15/english/panels/tp/tp_rdp/papers/tp_rdp20150519cb4-954-5-e.pdf</a>
		Minutes	CB(4)62/15-16  <a href="http://www.legco.gov.hk/yr14-15/english/panels/tp/tp_rdp/minutes/rdp20150519.pdf">http://www.legco.gov.hk/yr14-15/english/panels/tp/tp_rdp/minutes/rdp20150519.pdf</a>
--	Subcommittee on Matters Relating to Railways	Administration's paper on the progress update of the construction of the West Island Line, South Island Line (East) and Kwun Tong Line Extension (as at 30 June 2015)	CB(4)1412/14-15(01)  <a href="http://www.legco.gov.hk/yr14-15/english/panels/tp/tp_rdp/papers/tp_rdp4-1412-1-e.pdf">http://www.legco.gov.hk/yr14-15/english/panels/tp/tp_rdp/papers/tp_rdp4-1412-1-e.pdf</a>
--	Subcommittee on Matters Relating to Railways	Administration's paper on the progress update of the construction of the West Island Line, South Island Line (East) and Kwun Tong Line Extension (as at 30 September 2015)	CB(4)298/15-16(02)  <a href="http://www.legco.gov.hk/yr15-16/english/panels/tp/tp_rdp/papers/tp_rdp4-298-2-e.pdf">http://www.legco.gov.hk/yr15-16/english/panels/tp/tp_rdp/papers/tp_rdp4-298-2-e.pdf</a>

Relevant staffing proposal

Date of meeting	Committee	Minutes/Paper	LC Paper No.
19.12.2008	Panel on Transport	Administration's paper on proposed creation of two Chief Engineer posts in the Highways Department	CB(1)406/08-09(04)  <a href="http://www.legco.gov.hk/yr08-09/english/panels/tp/papers/tp1219cb1-406-4-e.pdf">http://www.legco.gov.hk/yr08-09/english/panels/tp/papers/tp1219cb1-406-4-e.pdf</a>
		Administration's paper on staffing proposal for the planning and implementation of the proposed Hong Kong boundary crossing facilities of the Hong Kong - Zhuhai - Macao Bridge project and the Shatin to Central Link railway project (follow-up paper)	CB(1)575/08-09(01)  <a href="http://www.legco.gov.hk/yr08-09/english/panels/tp/papers/tp1219cb1-575-1-e.pdf">http://www.legco.gov.hk/yr08-09/english/panels/tp/papers/tp1219cb1-575-1-e.pdf</a>
		Paper on directorate posts created for the Airport Core Programme and directorate posts created or planned to be created for the 10 Major Infrastructure Projects prepared by the Legislative Council Secretariat (fact sheet)	FS20/08-09  <a href="http://www.legco.gov.hk/yr08-09/english/sec/library/0809fs20-e.pdf">http://www.legco.gov.hk/yr08-09/english/sec/library/0809fs20-e.pdf</a>

Date of meeting	Committee	Minutes/Paper	LC Paper No.
		Minutes	CB(1)831/08-09  <a href="http://www.legco.gov.hk/yr08-09/english/panels/tp/minutes/tp20081219.pdf">http://www.legco.gov.hk/yr08-09/english/panels/tp/minutes/tp20081219.pdf</a>
14.1.2009	Establishment Subcommittee	Proposed creation of two supernumerary posts of Chief Engineer (D1) in Highways Department with effect from 1 April 2009 for the planning and implementation of the proposed Hong Kong Boundary Crossing Facilities of the Hong Kong-Zhuhai-Macao Bridge project and the Shatin to Central Link railway project up to 31 March 2014 and 31 March 2016 respectively	EC(2008-09)16  <a href="http://www.legco.gov.hk/yr08-09/english/fc/esc/papers/e08-16e.pdf">http://www.legco.gov.hk/yr08-09/english/fc/esc/papers/e08-16e.pdf</a>
		Minutes	ESC26/08-09  <a href="http://www.legco.gov.hk/yr08-09/english/fc/esc/minutes/esc20090114.pdf">http://www.legco.gov.hk/yr08-09/english/fc/esc/minutes/esc20090114.pdf</a>
13.2.2009	Finance Committee	Head 60 – Highways Department	FCR(2008-09)60  <a href="http://www.legco.gov.hk/yr08-09/english/fc/fc/papers/f08-60e.pdf">http://www.legco.gov.hk/yr08-09/english/fc/fc/papers/f08-60e.pdf</a>

<b>Date of meeting</b>	<b>Committee</b>	<b>Minutes/Paper</b>	<b>LC Paper No.</b>
		Minutes	FC148/08-09  <a href="http://www.legco.gov.hk/yr08-09/english/fc/fc/minutes/fc20090213.pdf">http://www.legco.gov.hk/yr08-09/english/fc/fc/minutes/fc20090213.pdf</a>

Council Business Division 4  
Legislative Council Secretariat  
11 December 2015