

立法會發展事務委員會會議  
Legislative Council Panel on Development



建議於土木工程拓展署  
設立「可持續大嶼辦事處」  
及

立法會 CB(1)322/16-17(01)號文件  
LC Paper No. CB(1)322/16-17(01)

重組現有四個拓展處

Proposal on  
Establishment of the Sustainable Lantau Office  
and  
Re-organisation of Existing Development Offices  
of Civil Engineering and Development Department



發展局

2016年11月22日

Development Bureau

22 Nov 2016

# 可持續大嶼辦事處 Sustainable Lantau Office

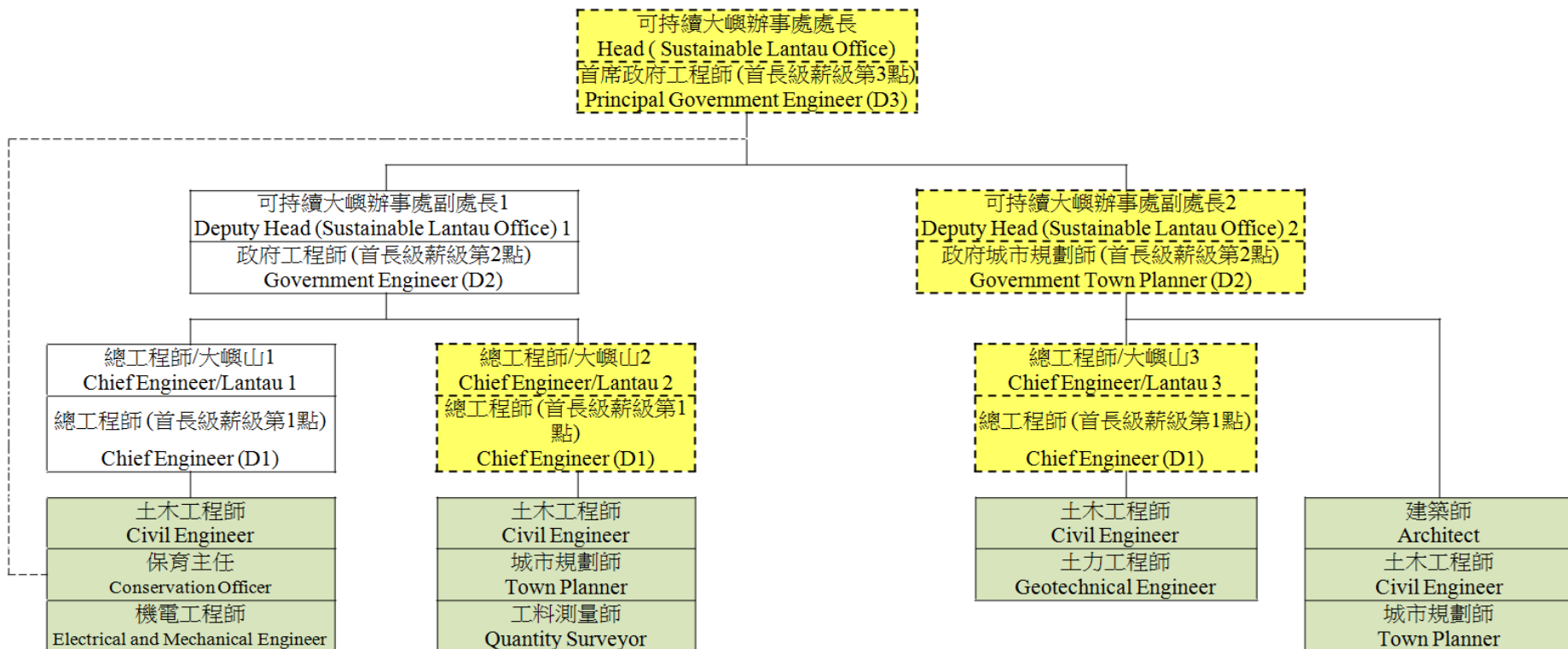
一站式跨界別專責辦事處

*One-stop dedicated multi-disciplinary office*



- 開設4個首長級\*編外職位 Create 4 directorate posts \* (supernumerary)  
至2021年3月31日 up to 31 Mar 2021

擬議的土木工程拓展署  
Proposed Organisation Chart of the Sustainable Lantau Office  
可持續大嶼辦事處組織圖  
of Civil Engineering and Development Department



\*一個首席政府工程師，一個政府城市規劃師及兩個總工程師

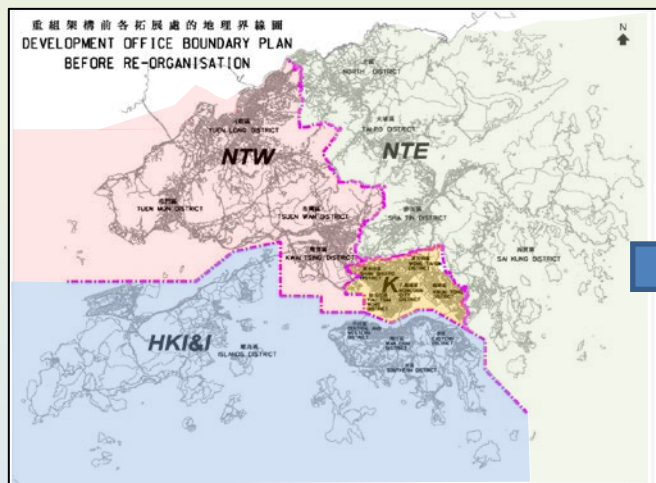
1 Principal Government Engineer, 1 Government Town Planner & 2 Chief Engineers

# 重新分配現有四個拓展處職務

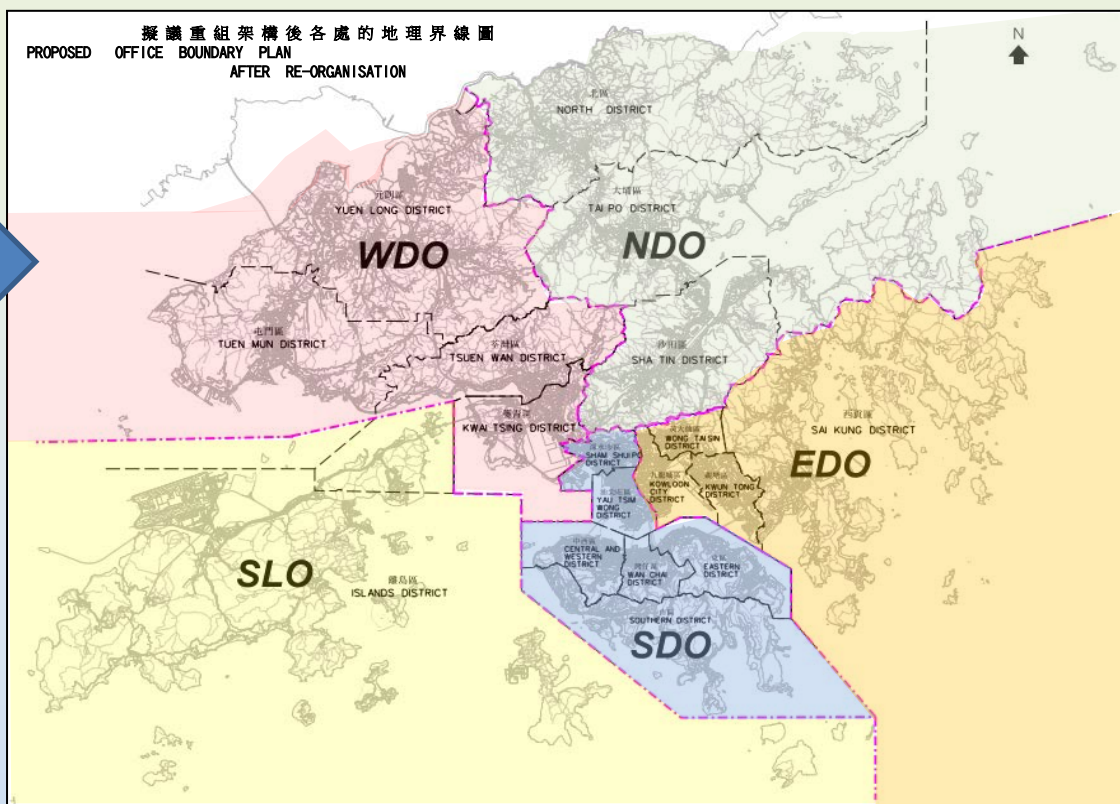
## Redistribution of duties of current 4 DevOs



現時 4 個拓展處分界  
Current geographical boundaries  
of 4 DevOs



重組後 5 個處分界  
Geographical boundaries  
of 5 Offices, after re-organisation



# 公眾參與的回應

## Feedback of PE



- 2016年4月30日完成，包括三場公眾論壇及33場諮詢會，總數約23 500個回應

Completed on 30 Apr 2016, including 3 public forums and 33 consultation meetings, total about 23 500 feedbacks

### 整體而言

- 普遍支持大嶼山擬議的發展計劃
- 大多支持「平衡並加強發展和保育」的規劃願景

### Overall

- Generally supported the proposed Lantau Development
- Very good public support for the planning vision “Balancing and enhancing development and conservation”



# 公眾參與的回應

## Feedback of PE



### 個別建議的公眾回應

- 支持北大嶼作策略性經濟和房屋發展，及東北大嶼作休閒、娛樂及旅遊用途
- 支持加強保育和善用自然資源，以達致可持續發展
- 支持建議的策略性鐵路及道路系統
- 支持休閒及康樂、文化與歷史、顧及鄉郊地區需要等
- 關注過度開發會破壞環境及大嶼山接待旅客能力
- 對東大嶼都會意見紛紜，要求更多資料

### Public Feedbacks on Individual Proposals

- Support North Lantau for strategic economic and housing development, and Northeast Lantau for leisure, entertainment and tourism
- Support for conservation and better utilisation of nature resources for sustainable development
- Support proposed strategic railway and road system
- Support recreation, leisure, culture and heritage uses, meeting needs of remote areas
- Concerns about damage to the environmental due to over-development and Lantau's capacity to receive visitors
- Diverse views on the ELM and requesting more information



# 負責工作

## Responsible works

- 房屋及經濟發展項目及研究
  - 大嶼山交通運輸與接待遊客能力研究
  - 地區改善工程
  - 自然、文化及古物古蹟保育
  - 康樂及旅遊發展建議
- 
- Housing and economic development projects and studies
  - Study on traffic, transport and capacity to receive visitors for Lantau
  - Local enhancement works
  - Nature, culture and heritage conservation
  - Recreation and tourism development proposals



# 加強自然保育

## Enhancing nature conservation



- 一組具自然保育知識和經驗人員
- 工作小組 — 探討保育計劃
- 恆常聯絡機制 — 與環保團體及持份者保持聯繫
- 重新命名為「可持續大嶼辦事處」，以反映我們「平衡發展與保育」的規劃願景

- A team of staff with knowledge and experience in nature conservation
- Task force -- exploring conservation initiatives
- Regular liaison mechanism -- maintain liaison with green groups and relevant stakeholders
- Re-named as “Sustainable Lantau Office” to reflect the planning vision “Balancing and enhancing development and conservation”



完  
**Ends**