



3281RS

立法會 CB(1)626/16-17(02)號文件  
LC Paper No. CB(1)626/16-17(02)

## 重置駿業街遊樂場設施至康寧道公園及牛頭角食水配水庫

# Reprovisioning of Tsun Yip Street Playground facilities to Hong Ning Road Park and Ngau Tau Kok Fresh Water Service Reservoir

立法會發展事務委員會  
Legislative Council Panel on Development  
28.2.2017

BRANDING  
DESIGN  
DIVERSITY



# 背景Background

於康寧道公園及牛頭角配水庫重置  
Reprovisioning at Hong Ning Road Park  
and Ngau Tau Kok Service Reservoir

駿業街遊樂場改建工程  
Conversion of Tsun Yip  
Street Playground



# 位置 Location

## 康寧道公園及牛頭角配水庫 Hong Ning Road Park and Ngau Tau Kok Fresh Water Service Reservoir



康寧道公園第一期  
Hong Ning Road Park  
Phase 1

樂華南邨  
Lok Wah South Estate

康利苑  
Hong Lee Court

康寧道  
Hong Ning Road

秀雅道遊樂場  
Sau Nga Road  
Playground

康寧道公園第二期  
Hong Ning Road Park  
Phase 2

康寧道遊樂場  
Hong Ning Road  
Recreation Ground

祥和苑  
Cheung Wo Court

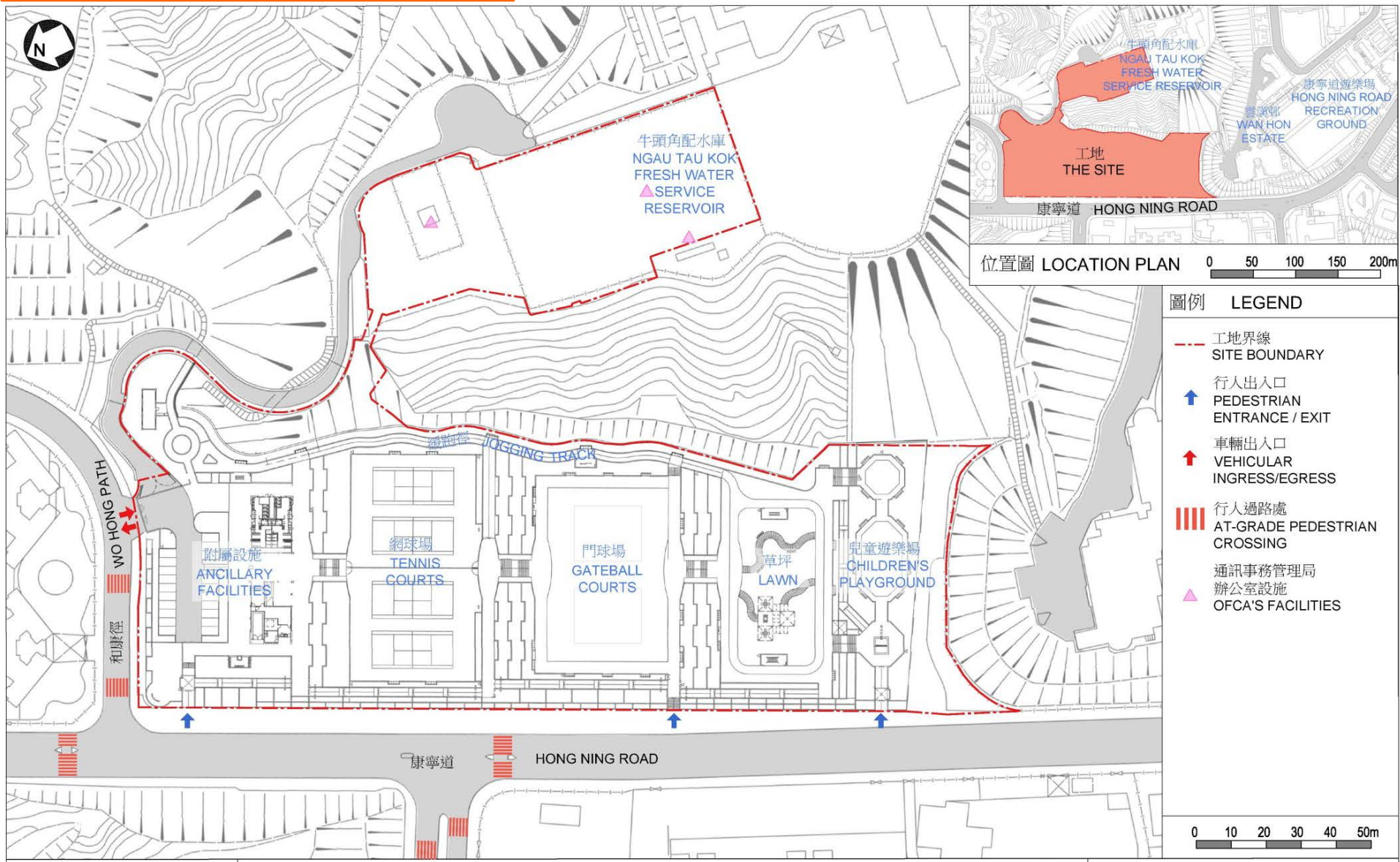
秀明道公園  
Sau Ming Road Park

曉麗苑  
Hui Lai Court

牛頭角食水配水庫  
Ngau Tau Kok Fresh Water  
Service Reservoir

觀塘道  
Kwun Tong Road

# 現有設施 Existing Facilities



# 現況 Existing Condition

# 康寧道公園 Hong Ning Road Park

牛頭角食水配水庫  
Ngau Tau Kok Fresh Water Service Reservoir

緩跑徑 jogging track

兒童遊樂場  
children's playground

廁所及管理處  
Toilets and management office

四個網球場  
4 tennis courts

兩個門球場  
2 gateball courts

休憩區  
sitting out area

停車場  
car park

和康徑  
WO HONG PATH

康寧道公園第一期  
Hong Ning Road Park Phase 1

# 現況 Existing Condition

## 牛頭角配水庫

## Ngau Tau Kok Fresh Water Service Reservoir



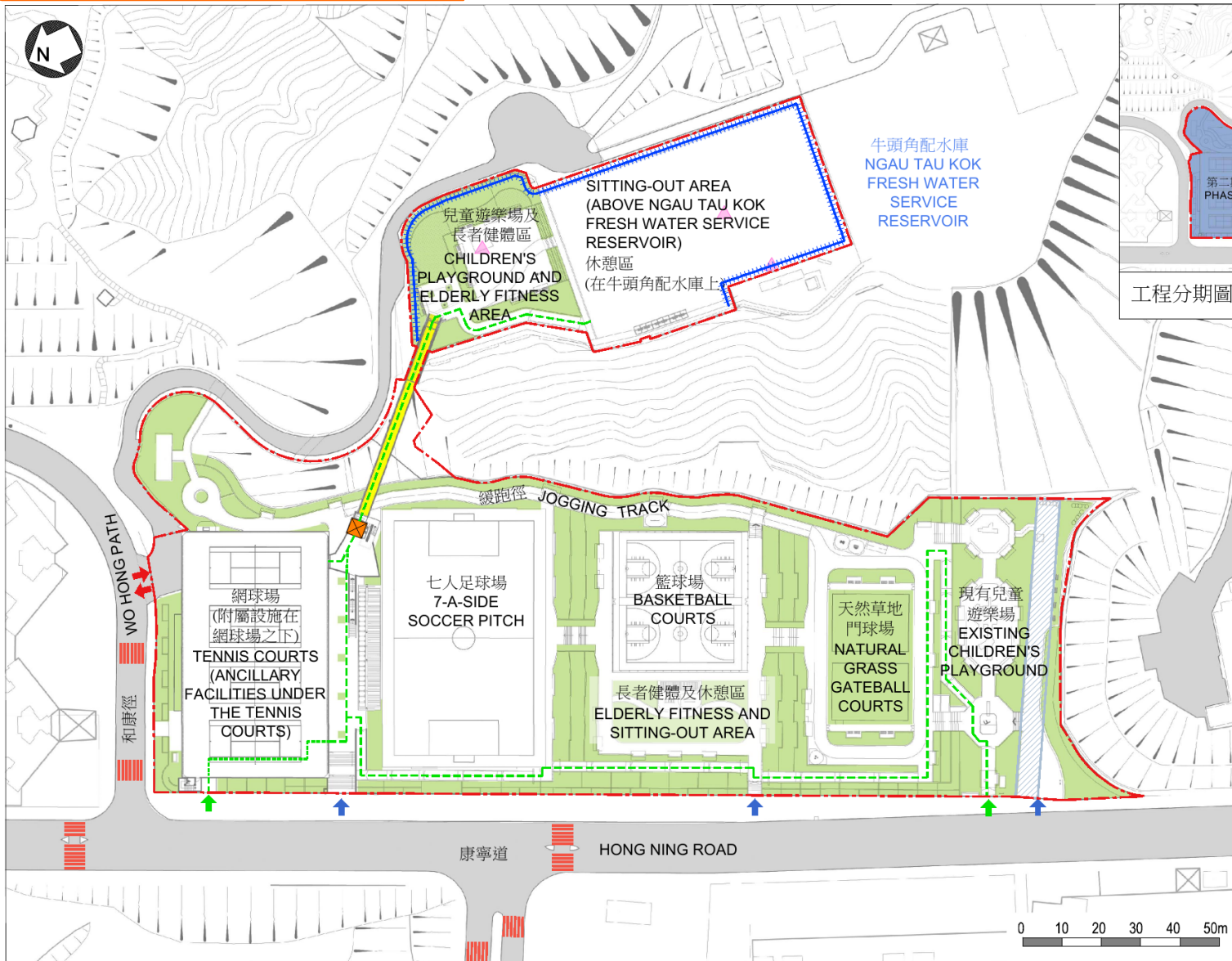
- 重置駿業街遊樂場的一個七人足球場及兩個籃球場  
Reprovision a 7-a-side soccer pitch and two basketball courts of Tsun Yip Street Playground
- 重置康寧道公園的四個網球場和兩個門球場，以及現有緩跑徑  
Reprovision four tennis courts and two gateball courts, and existing jogging track at Hong Ning Road Park
- 於康寧道公園及水庫提供草地、園景、長者健體區、休憩區及兒童遊樂場  
Provision of lawn, landscaping, elderly fitness area, sitting-out area and children's playground at Hong Ning Road Park and the Reservoir
- 提供無障礙通道及相關設施連接康寧道公園及水庫  
Provision of barrier-free access and related facilities to connect Hong Ning Road Park and the Reservoir

- 興建附屬設施，包括廁所、育嬰室、管理處、貯物室、急救室、垃圾房、器材儲存室、上落客貨區及停車場設施  
Construction of ancillary facilities, including toilets, baby care room, management office, store room, first-aid room, refuse collection chamber, equipment store room, loading and unloading area and car parking facilities
- 拆卸用地範圍內通訊事務管理局辦公室已停用的設施，包括一座構築物、天線支架及支架固定點  
Demolition of the Office of the Communications Authority's disused facilities, including a structure, an antenna mast and anchoring points for mast
- 在水庫設置欄障限制公眾進入水務署的設備及設施  
Construction of a barrier at the Reservoir to restrict public access to Water Supplies Department's equipment and facilities

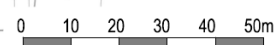


# 工地平面圖 Site Plan

# 康寧道公園及牛頭角配水庫 Hong Ning Road Park and Ngau Tau Kok Fresh Water Service Reservoir



圖例	LEGEND
	工地界線 SITE BOUNDARY
	無障礙通道 BARRIER-FREE ACCESS
	有蓋無障礙通道 COVERED BARRIER-FREE ACCESS
	花槽/草坪 PLANTER / LAWN
	水務專用範圍 WATERWORKS RESERVE
	暢通易達升降機 ACCESSIBLE LIFT
	行人連接天橋 PEDESTRIAN LINK BRIDGE
	行人出入口 PEDESTRIAN ENTRANCE / EXIT
	無障礙出入口 BARRIER-FREE ENTRANCE / EXIT
	車輛出入口 VEHICULAR INGRESS/EGRESS
	行人過路處 AT-GRADE PEDESTRIAN CROSSING
	需拆卸的通訊事務管理局辦公室設施 OFCA'S FACILITIES TO BE DEMOLISHED
	限制通往水務署設施欄障 BARRIER RESTRICTING ACCESS TO WSD'S FACILITIES





從西南面俯瞰康寧道公園的景觀  
AERIAL VIEW FROM SOUTH WESTERN  
DIRECTION ON HONG NING ROAD PARK

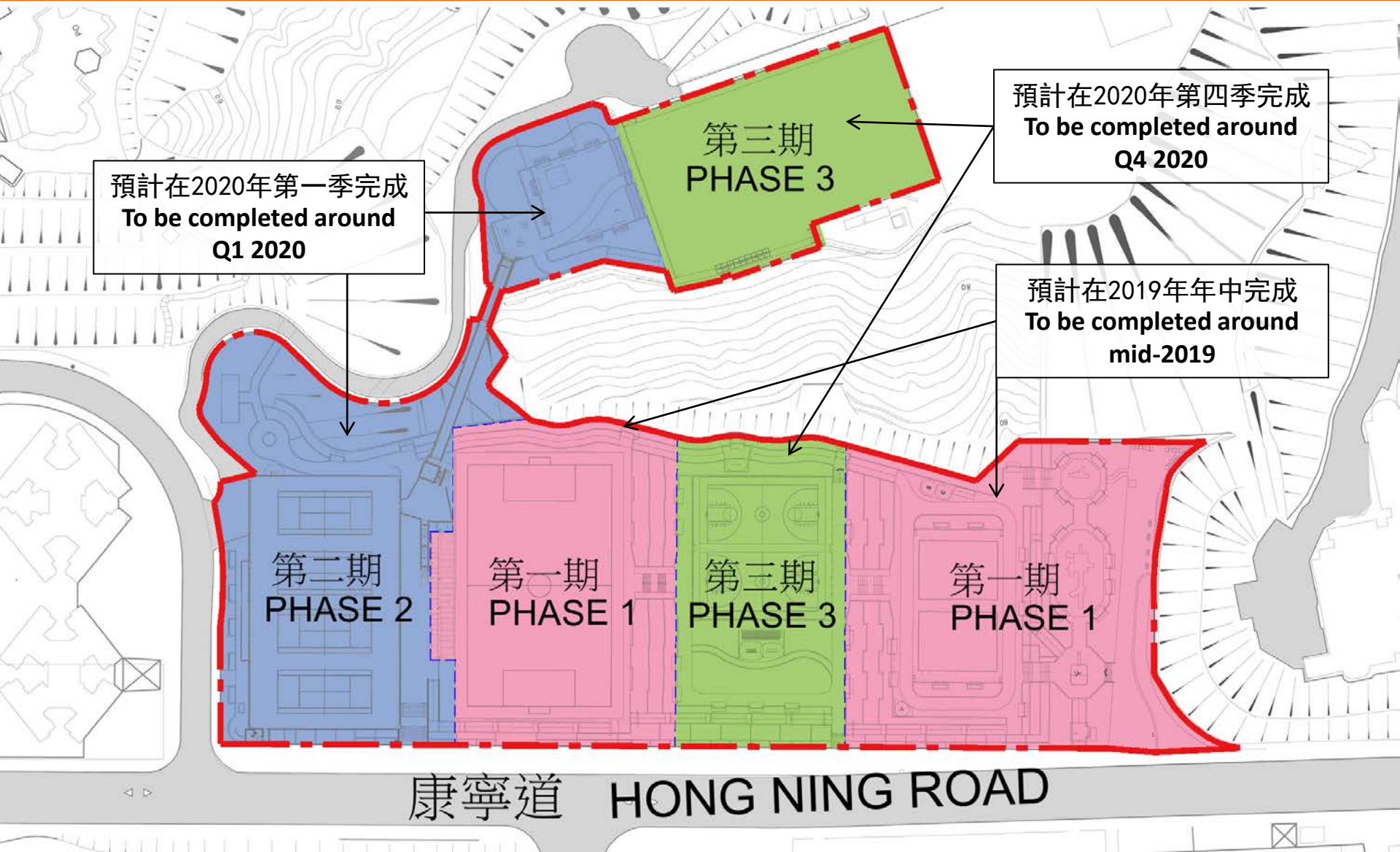


從北面俯瞰兒童遊樂場、長者健體區、園境及在牛頭角配水庫上的休憩空間的景觀

AERIAL VIEW FROM NORTHERN DIRECTION ON CHILDREN'S PLAYGROUND, ELDERLY FITNESS AREA, LANDSCAPING AND SITTING-OUT AREA ABOVE NGAU TAU KOK FRESH WATER SERVICE RESERVOIR

# 工程分期圖 Phasing Plan

## 康寧道公園及牛頭角配水庫 Hong Ning Road Park and Ngau Tau Kok Fresh Water Service Reservoir



# 種植策略 Planting Strategy

## 康寧道公園及牛頭角食水配水庫

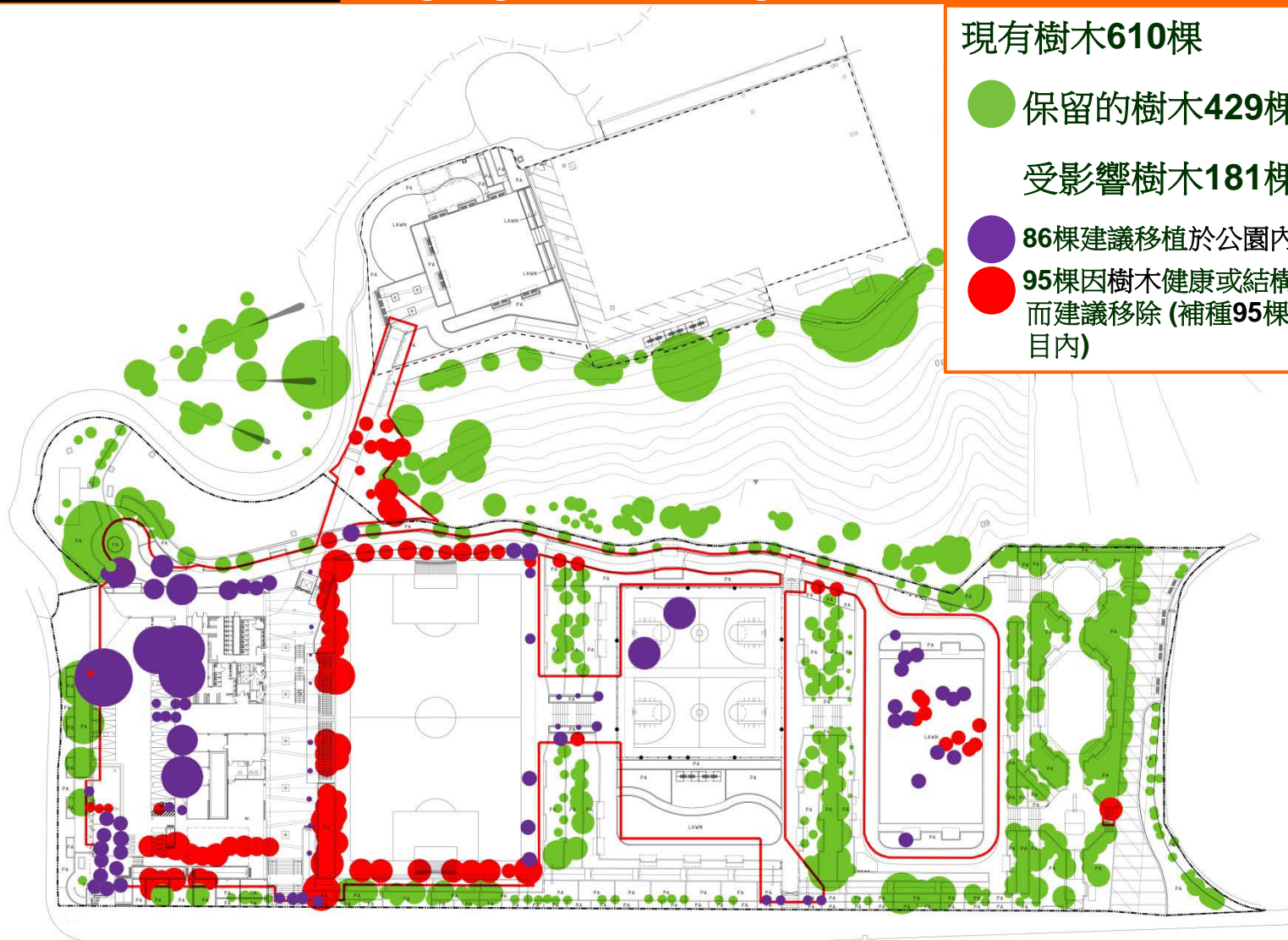
## Hong Ning Road Park and Ngau Tau Kok Fresh Water Service Reservoir

<p>主題樹 SIGNATURE TREE</p>	<p>翠堤灣畔 Jade Crescent</p>    	<p>曉巒翠景 Sunny Prospect</p>   
<p>新填海區 / 主要交通幹道區 / 工業區 MODERN RECLAMATION AREAS / MAJOR TRANSPORT CORRIDORS / INDUSTRIAL AREAS</p>	       	
<p>舊區/傳統市區 HISTORIC / TRADITIONAL URBAN AREAS</p>	      	
<p>都市綠化區及休憩空間 URBAN GREEN AREAS AND OPEN SPACES</p>	      	
<p>住宅區 RESIDENTIAL AREAS</p>	      	
<p>郊野公園及綠化地帶 COUNTRY PARKS AND GREEN BELT AREAS</p>	      	

# 現有樹木 Existing Trees

## 康寧道公園及牛頭角配水庫

### Hong Ning Road Park and Ngau Tau Kok Fresh Water Service Reservoir





多謝  
Thank You

Connectivity

Design

Diversity

Branding