

ITEM FOR ESTABLISHMENT SUBCOMMITTEE OF FINANCE COMMITTEE

HEAD 25 – ARCHITECTURAL SERVICES DEPARTMENT Subhead 000 Operational expenses

Members are invited to recommend to Finance Committee the creation of the following permanent post in the Architectural Services Department upon approval by Finance Committee –

1 Chief Landscape Architect
(D1) (\$135,950 - \$148,750)

PROBLEM

We need dedicated staffing support at the directorate level to head a new Landscape Division (LD) under the Architectural Branch (ArchB) of the Architectural Services Department (ArchSD) to strengthen the provision of professional landscape architectural support to ArchSD in handling landscape design and tree management planning matters.

PROPOSAL

2. ArchSD, as one of the works management departments under the Development Bureau (Works Branch) (DEVB(WB)), is tasked to collaborate with the Greening, Landscape and Tree Management Section (GLTMS) of DEVB(WB) to plan, devise and implement measures to improve the living environment of Hong Kong. Landscape Architect (LA) grade officers in ArchSD play a vital role in providing the necessary professional support from a landscape architectural perspective. With a considerable increase in the volume, scope and complexity of work arising from policy initiatives and public works projects requiring quality landscape and urban design as well as professional tree management in the past decade, the existing LA grade staff's complement in the Department is no longer

/adequate

adequate to cope with the latest service needs. There is a need to enhance staffing resources at the directorate level by creating a Chief Landscape Architect (CLA) (D1) post to lead the landscape team in the Department and oversee the landscape and greening works of the public projects under ArchSD's purview to meet rising public expectations for a quality built environment.

JUSTIFICATIONS

Current establishment of LA grade in ArchSD

3. The LA grade is a professional grade under the central management of DEVB(WB). There are at present 15 permanent and two time-limited LA grade posts in ArchSD at either professional or senior professional level but without any at the directorate level. The 17 LA grade officers are deployed to different branches (including ArchB, Project Management Branches (PMBs), Property Services Branch (PSB) and Quantity Surveying Branch (QSB)) to provide professional landscape architectural support in the discharge of the Department's core responsibilities in respect of government-owned and government-funded facilities under three programme areas, namely (i) monitoring and advisory services, (ii) facilities development and (iii) facilities upkeep. They all work under the management of directorate officers of other professional disciplines such as the Architect and Structural Engineer grades. With an ever-increasing demand for more high-level landscape architectural advisory services, there is a genuine need to enhance landscape architectural support both in breadth and in depth under dedicated steering and central coordination and in a strategic and holistic manner at the directorate level, in line with the practice of other professional disciplines.

Significant demand for landscape architectural input on projects

4. The increase in the establishment of the LA grade in ArchSD in the last decade has not kept up with the pace of the increase in emphasis on and importance of landscape architecture and tree management in government projects. In-depth and extensive landscape architectural and urban greening input is essential to meeting increasing public aspirations for a quality living environment. In recent years, the Department has been providing significant landscape architectural input to many large-scale projects and is committed to continuing the provision of such input for upcoming mega projects. A directorate officer of the landscape architectural discipline is required for high-level landscape architectural steering and coordination regarding project development to ensure the quality of work and to meet heightened public expectations. Examples of large-scale projects involving extensive landscape architectural input in recent years and upcoming ones are

Encl. 1 tabulated in Enclosure 1.

/Higher

Higher standard and quality of landscape architecture works

5. To meet people's demand for sustainable development and their expectations over the quality of the built environment, a higher standard and quality of landscape architectural works have to be adopted in public works projects. Within this decade, public works have increased soft landscape provisions and sought to improve the quality of landscape architecture as a proactive demonstration of the Government's commitment to enhancing our living environment. Initiatives such as vertical landscapes, rooftop gardens, and tree preservation and transplantation have been widely adopted in government building projects. These initiatives have been further enhanced with the establishment of GLTMS in DEVB(WB) in 2010. GLTMS has promulgated guidelines, best practices, landscape initiatives and policies associated with landscape planning and design as well as tree management for departments to follow and implement. Together with other new initiatives such as sustainable urban landscapes, enriched vegetation diversity and refined tree risk assessment management, there have been a significant increase in the demand for higher standard and quality LA's input. While professional landscape architectural consultants and designers are engaged in all outsourced and design-and-build projects to handle landscape issues when required, sufficient monitoring and support by the LA grade officers in ArchSD has to be maintained to oversee the implementation and integration of these initiatives and policies into the projects. Without any steer at the directorate level in the landscape architectural discipline, the existing LA grade staffing resources are inadequate in providing effective direction, management and accountability over landscape matters.

Need for dedicated landscape architectural steer at directorate level

6. ArchSD has been playing an important part in devising and implementing policies on landscape architecture and tree management, and is committed to collaborating with various stakeholders including industry partners, user departments and the general public to build and maintain a quality living environment. To meet the increasing public aspirations for a sustainable and liveable city, dedicated and more extensive and in-depth landscape architectural management in a strategic and holistic manner at the directorate level is required for –

- (a) implementing and integrating new landscape initiatives and policies into works projects;
- (b) enforcing standards and best practices as well as upholding the quality of landscape works and services and effectively collaborating with GLTMS in promoting quality landscape architecture in public facilities;

/(c)

- (c) appropriately aligning focuses and quality standards on landscape services;
- (d) promoting research and development related to greening and landscape for advancing the landscape technology used in ArchSD projects;
- (e) raising the quality of landscape and tree management works in the industry and facilitating the communication among landscape professionals in the private sector, stakeholders in the landscape industry and the Government; and
- (f) pursuing the policy steer on urban design, place-making and master planning initiatives.

7. It is pivotal to have a directorate officer in ArchSD with robust knowledge of landscape architecture from management to implementation to proactively steer and ensure all the initiatives and policies mentioned above are duly incorporated into the Department's core functions and to provide strategic and clear directives on their implementation to facilitate appropriate action. The creation of a permanent CLA post will strengthen communication with the landscape industry through high-level meetings with professional institutes as well as landscape professionals in the private sector; provide stewardship regarding key departmental objectives and targets on landscape services; ensure comprehensive strategic and professional steer, guidance, collaboration and accountability in all stages and areas of work; and maintain effective support for DEVB(WB) at a strategic level for standards enforcement as well as facilitate qualified personnel in reviews of landscape design and tree management planning.

8. We propose to establish a new division, i.e. LD, in ArchB to be headed by the proposed permanent CLA post (designated as CLA/LD). Reporting to the Assistant Director/Architectural, the CLA will provide directorate level guidance for implementing landscape policies and initiatives, and coordination in ArchSD on strategic issues for cross-sector collaboration among bureaux/departments and relevant stakeholders. Furthermore, the CLA will be responsible for LD's administration and operation in the development and implementation of public works projects to ensure the quality standard of landscape architectural input is maintained. He/She will also lead research and promote best practices in landscape design for the advancement of the landscape profession to meet rising public expectations. The proposed job description of the post is at

Encl. 2 Enclosure 2.

/9.

9. Upon the setting up of LD, three Senior Landscape Architects (SLAs) and eight LAs will be redeployed from Division 1 of ArchB to LD, which will be headed by a directorate officer with the same professional background, to rationalise the chain of command and enhance service delivery to clients, in view of their existing roles and established practices in landscape design and tree management planning matters. One additional LA/ALA post will be created to cope with the increasing workload associated with project delivery and advisory services. The remaining existing LA grade officers, namely two SLAs and two LAs in PMBs (who are mainly involved in the development of new works projects), one LA in PSB (who is responsible for tree management matters) and one LA in QSB (who provides LA input on subvented and entrusted projects), will continue to be so deployed to better meet operational needs. All of them will work directly to their respective branch heads, but will be indirectly supervised by the CLA and will seek the latter's steer and directives on major projects requiring LA input and on issues relating to landscape policy. The organisation chart showing the distribution of LA grade officers in ArchB and those in other Branches upon LD's establishment is at Enclosure 3.

Encl. 3

ALTERNATIVES CONSIDERED

10. Having reviewed the strength and expertise of existing professional grades in ArchSD critically, we conclude that they have neither spare capacity nor relevant expertise to absorb the duties of the proposed CLA post. Given the complexity and magnitude of the tasks mentioned in paragraphs 4 to 8 above, a designated CLA post is required urgently to render full support for planning and implementing the objectives of ArchSD at a strategic level on the landscape architectural front on a long-term basis.

FINANCIAL IMPLICATIONS

11. The proposed creation of the CLA (D1) post will bring about an additional notional annual salary cost at mid-point of \$1,732,800. The additional full annual average staff cost, including salaries and staff on-cost, is around \$2,513,000.

12. The additional notional annual salary cost at mid-point for the one additional LA/ALA post is \$711,120 and the full annual average staff cost, including salaries and staff on cost, is about \$1,220,000. We have included the necessary provision in the 2017-18 Estimates to meet the cost of the proposal and will reflect the resources required in the Estimates of subsequent years.

/PUBLIC

PUBLIC CONSULTATION

13. We consulted the Legislative Council Panel on Development on 23 May 2017. The majority of panel members raised no objection to the creation of the proposed CLA post.

14. At the Panel meeting, some members commented on the need to explore the establishment of a new Arborist grade to look after tree preservation and tree risk assessment; the adequacy of LA resources in ArchSD to handle the large number of upcoming projects in coming years; and the staff supervision matters of the LA grade officers working in other branches. We clarified that a CLA was urgently needed to head the LA team in ArchSD in view of rising public expectations over the quality of landscape architectural work. We would also review workload from time to time and redeploy LA grade officers in ArchSD as and when necessary. The CLA would steer and give directives on issues related to the professional knowledge concerning landscape architecture to all LA grade officers, including those working in other ArchSD branches, if required.

15. Apart from panel members, the Hong Kong Institute of Landscape Architects, the Hong Kong Government Landscape Architects Association and the Technological and Higher Education Institute of Hong Kong, in their letters dated 24 April 2017 to the Hon. Tommy CHEUNG, the panel chairman, all indicated their support for the creation of the proposed CLA post.

ESTABLISHMENT CHANGES

16. The establishment changes in ArchSD for the past two years are as follows –

Establishment (Note)	Number of Posts			
	Existing (As at 1 May 2017)	As at 1 April 2017	As at 1 April 2016	As at 1 April 2015
A	39*	39	39	39
B	577	572	561	547
C	1 229	1 226	1 224	1 221
Total	1 845	1 837	1 824	1 807

Note:

A - ranks in the directorate pay scale or equivalent

B - non-directorate ranks, the maximum pay point of which is above MPS 33 or equivalent

C - non-directorate ranks, the maximum pay point of which is at or below MPS 33 or equivalent

* - As at 1 May 2017, there was no unfilled directorate post in ArchSD

/CIVIL

CIVIL SERVICE BUREAU COMMENTS

17. The Civil Service Bureau supports the proposed creation of a permanent CLA post in ArchSD to strengthen its professional landscape architectural support in handling landscape design and tree management planning matters. The grading and ranking of the proposed post are considered appropriate having regard to the level and scope of the responsibilities involved and the professional input required.

ADVICE OF THE STANDING COMMITTEE ON DIRECTORATE SALARIES AND CONDITIONS OF SERVICE

18. The Standing Committee on Directorate Salaries and Conditions of Service has advised that the grading proposed for the permanent CLA post is appropriate.

Development Bureau
June 2017

Lists of Large Scale Projects with Significant Landscape Input**Table 1 : List of Projects with Significant Landscape Input Completed in Recent Years**

Project Titles	Landscape area (ha)	Project and Landscape Information
Town Park, Indoor Velodrome cum sports centre in Tseung Kwan O	5.3	<p>The town park is a district open space that features a large landscaped area as a multi-layered ‘green carpet’ which covers the entire project area across different levels. The vastly vegetated town park offers a natural and comfortable open space to meet the demand of citizens in Tseung Kwan O and beyond. The recently built town park includes a garden, an artificial lake, an amphitheatre, a skateboard park, a jogging track, a children play area, a fitness corner for the elderly, a service block and other ancillary facilities. It offers ample space for both active and passive activities. 1 200 nos. of trees are planted which follows the thematic planting strategy in order to introduce spatial identity and stimulate visual appreciation. <i>Bauhinia variegata</i> is chosen as the thematic plant species to enhance the attractiveness of the landscape environment.</p> <p>Traditionally, park design and construction is the main expertise provided by the landscape disciplines. The project managers have defined the frameworks of this park, incorporating a contemporary landscape image and unconventional recreational features for further consultancy design development. While subsequent monitoring of consultants’ works are vital, it is the initial design and planning intention that makes the project resonate to the awarded architecture, i.e. Indoor Velodrome-cum sports centre, and stands out as a distinctive urban</p>

Project Titles	Landscape area (ha)	Project and Landscape Information
		landscape.
West Kowloon Law Courts Building	0.2	<p>This project is constrained by its limited site area and extensive building footprint requirement. The building layout is unavoidably in conflict with existing trees, and significant part of greenery has to be provided at podium and roof/sky gardens in order to achieve the required minimum site coverage of greenery.</p> <p>This project represents a typical phenomenon commonly faced in building projects. To strike a balance between development and preservation of the environment, the liaison works and professional judgment of the landscape architect related to the provision of greenery are crucial. This project preserved 19 nos. of trees in works area and transplanted 21 nos. of trees to various locations offsite in proximity to the project site. Transplanting works involves experienced evaluation and careful work specifications. Intensive landscape input and coordination for tree works at various stages to meet the construction programme and quality delivery of the project were demonstrated.</p>
Establishment of Centre of Excellence in Paediatrics, Kai Tak	0.65	<p>Situated at waterfront in the Kai Tak Development Area, in addition to complying with a variety of statutory and administrative requirements, the design and construction of the Centre of Excellence in Paediatrics (CEP) caters the special needs for the patients of the hospital. The landscape design of CEP aims to constitute an overall naturalistic environment with strong identity congruent with the unique nature of the hospital and to form an</p>

Project Titles	Landscape area (ha)	Project and Landscape Information
		<p>integral part of the rehabilitation program for children patients. The master plan weaves the hospital environment into the wider landscape of Kai Tak Development. It promotes pedestrian-friendly environment, public accessibility and connectivity to waterfront areas.</p> <p>The Central Garden, which locates between the two main buildings, consists of an extensive lawn area, children play area, horticultural therapy garden for a variety of therapeutic purposes and pocket areas for tranquility by individuals.</p> <p>The therapeutic and psychological nature of the project requires in-house landscape architects' attentive monitoring in a managerial role on the detailed works of the consultants and contractors. The uniqueness of this project largely refers to the integration of landscape and greening in the healing process. The potential of improving patient's mental conditions through landscape is becoming one of the important streams in the design discipline.</p>
Construction of Trade and Industry Tower in Kai Tak Development Area	0.36	<p>Located in the middle of the developing Kai Tak and veteran San Po Kong and Kowloon City, the Trade and Industry Tower bookmarks a chapter of urban rejuvenation in the district. The office development project features a 'Green Ribbon' linking the horizontal greening at levels and vertical greening over different tower elevations. The design idea challenges the extent of landscape in skyscrapers and further explores the relationship between architecture and landscape. The project has received the Grand Award in Green Building</p>

Project Titles	Landscape area (ha)	Project and Landscape Information
		<p>Award 2014 (New Buildings Category) and Quality Building Award 2016 (Certificate of Finalist).</p> <p>Extensive landscaped areas and tree planting at different levels offer lush and green passive open spaces with different characters. Key landscaped areas include the ground-level streetscapes and gardens, extensive greening space above the Community Hall and rooftop garden on the high-rise office tower.</p> <p>The design and implementation of this project were carried out by a team of professionals from both in-house public officers and outsourced consultants. Landscape professionals had played an important role that the project sets up a new model of public-private interactions in the building of contemporary institutional architecture in Hong Kong.</p>
The Reprovisioning of Yaumatei Specialist Clinic at Queen Elizabeth Hospital	0.12	<p>The project is situated in the south-eastern corner of the whole Queen Elizabeth Hospital. It is set up to accommodate medical services provided at the existing Yaumatei Specialist Clinic and Yaumatei Jockey Club Polyclinic. Although the site area is already relatively tight, this project incorporated as many landscape elements as possible to enhance the local environment. More than 30% greening provision is achieved in this project. The landscaped open spaces includes a rehabilitation garden, staff garden, inaccessible green roofs on link bridges, edge planting on small landscape balconies, vertical greening at grade and elevated levels to enhance the built environment. Diverse range of herbs species are selected specifically to affiliate with the therapeutic</p>

Project Titles	Landscape area (ha)	Project and Landscape Information
		<p>landscape and for rehabilitation purpose. The overall approach of landscape design is low maintenance in order to control the cost from construction to post-construction stages.</p> <p>Landscape architect was involved in the managerial role, ensuring the smooth and quality delivery of the project.</p>
Kwun Tong Promenade (Stage 2)	3.4	<p>Since its opening in 2015, Kwun Tong Promenade (Stage 2) has become one of the beloved public spaces in Hong Kong. The project has successfully transformed a post-industrial port facility to a vibrant and attractive waterfront with a 950m promenade celebrating the shoreline of the Victoria Harbour. The project has received numerous awards including Good Design Award 2015, Hong Kong Institute of Architects (HKIA) Annual Awards 2015 (Finalist), Hong Kong Institute of Landscape Architects (HKILA) Design Awards 2016 (Merit), RICS Awards, Hong Kong 2016 (Winner of Construction Project Category), Green Building Award 2016 (Finalist) and Hong Kong Public Space Awards 2016 (2nd Place of the Best Public Space Category).</p> <p>Landscape design played an indispensable role in conceptualizing the design ideology and creating the 'Place' where its transparency and openness has maximized social interactions. The landscape design follows the essence of minimalism with the employment of extensive lawn area which serves as an open platform to encourage public interpretation and appropriation. Diverse and spontaneous types of human activities can be observed from day to night. Users from</p>

Project Titles	Landscape area (ha)	Project and Landscape Information
		<p>all walks of life have come to enjoy the public space and it is truly a ‘promenade for all’. The project forms part of the continuous waterfront promenade system in East Kowloon in the future.</p> <p>The project scope consists of mainly landscaped area for both active and passive activities with individual building structures serving as ancillary facilities. Iconic pavilions were strategically placed to signify and enhance the character of the promenade. Situated in an industrial area, the project aims to bring Nature into our city. A variety of suitable planting palette was explored and employed in order to create a tailor-made and site-specific landscape environment in the area. The landscape team was closely engaged in the project from conceptual design to the completion of construction works, ensuring the delivery of quality landscape. With active contribution of landscape architects in all work stages, this project has demonstrated that landscape design is an essential element in urban regeneration and revitalization where new character is inserted to the district.</p>
Pet Garden at the New Central Harbourfront	0.44	<p>The Pet Garden at the New Central Harbourfront is a popular gathering space for pet owners. The project is connected to the existing green lawn of Tamar Park via the pet access. It provides an elaborate solution to satisfy the needs of multiple users, including pets and pet owners, in public space.</p> <p>The scope of the project includes two puppy’s circles with sitting-out areas, a turf area, arbours, dog excreta collection bins and hand-washing facility. The project delivers 0.44 ha of</p>

Project Titles	Landscape area (ha)	Project and Landscape Information
		<p>greening area and the planting of 14 nos. of new trees. Landscape architect was engaged in, from the planning stage to the implementation of the landscape works till completion of the project, designing the master layout plan and planting. It enhances the overall greenery along the Central Waterfront and provides an environment of high amenity value to the public.</p>
Waterfront Promenade at Hoi Yu Road	0.58	<p>Although relatively small in scale, the project realizes the connectivity of the Quarry Bay promenade by revitalizing a strip of land fronting the Eastern Harbour Crossing Ventilation Building into an advance promenade. It provides an alternative leisure path connecting Quarry Bay Park Phase 1 and Phase 2. The advance promenade encourages recreation activities in treasurable waterfront space otherwise idle and inaccessible to the general public. Located north of Island Eastern Corridor, this project embraces an initiative to re-connect people to the water previously segregated by transportation infrastructures. It reconstructs the relationship between land and sea and the spatial allocation of land use function in existing urban fabrics.</p> <p>The project consists of seaside walkways for leisure strolls and jogging, a pet garden by the seaside, rain-shelters and sitting facilities, associated landscape planting and temporary toilet. The relatively flexible programme in the project and clean and tidy landscape design form has generated a sense of openness and refreshing environment for many users coming from adjacent busy commercial and business district. Close coordination with</p>

Project Titles	Landscape area (ha)	Project and Landscape Information
		the inter-bureau/departmental working group was carried out to ensure fulfillment of stakeholders' design requirements and timely delivery of the project for early public enjoyment. Landscape intervention, as represented in this project, has flexibly utilized urban space for the benefits of the public.
Transformation of the former Police Married Quarters on Hollywood Road into a creative industries landmark (PMQ)	0.13	<p>Compare to the bundle of international and local architectural awards of this project, including but not limited to ARCASIA Awards for Architecture 2016 (Conservation Projects), Design for Asia Awards 2015 (Grand Award), Hong Kong Institute of Planners Awards 2015 (Jurors' Special Award), HKIA Annual Awards 2014 and Good Design Awards 2014, the HKILA Design Awards 2014 (Merit) represents no less significance for its contribution to the urban environment.</p> <p>There were a significant number (17 nos. out of 18 nos. of existing trees) of Stone Wall Trees (SWTs) and one big mature tree with both high amenity and heritage values within the site. Tremendous effort was spent on landscape design in terms of preservation and improving the constitutions of the existing heritage, 17 nos. of SWT and one large mature tree. Huge concerns from Central and Western District Council, DEVB, and other stakeholders particularly were acknowledged. Not only numerous consultation sessions and meticulous coordination were carried out, innovative and adaptive construction techniques were explored. To name a few, the root mapping technique, unconventional scaffolding method, irregular bamboo stake pattern and</p>

Project Titles	Landscape area (ha)	Project and Landscape Information
		<p>white colour protective screen.</p> <p>This project demonstrates the commitment of the Government to preserve historically and culturally valuable trees. Building services were re-aligned. Building setback was negotiated.</p> <p>Landscape architect was the key figure in materializing all these landscape-oriented designs. The role of landscape architect in this project was a bridge between architects, engineers, surveyors, contractors, District Council, renowned tree experts, tree lovers, the public and the 18 nos. of irreplaceable trees.</p>

Table 2 : List of Upcoming Projects with Significant Landscape Input (ongoing/under planning)

Name of projects	Landscape area (ha)	Project and Landscape Information
Kai Tak Station Square, Kowloon City District	12	<p>This is a large scale open space project which occupies 12 ha and most area of the site is zoned as regional open space. This project positions itself to become an iconic world class civic square.</p> <p>While landscape urbanism and the subsequent types of paradigmatic interpretations have become the core discussion in many world-class cities, landscape architects are expected to have a weighted role in this project. 40% of greenery coverage, extensive tree planting to create various activity areas underneath tree canopies will be provided.</p> <p>Frequent liaison with other projects during design and construction stages for coherent landscape network within</p>

Name of projects	Landscape area (ha)	Project and Landscape Information
		Kai Tak Development Area is currently carried out in order to inject character to the project in a holistic manner.
Swimming-pool Complex and Open Space in Remaining Portion of District Open Space in Area 107, Tin Shui Wai	2.62	<p>This project involves a swimming pool complex with associated open space as landscape connection with Wetland Park and 30% green coverage will be achieved. Some special landscape themes developed such as edible landscape to compliment the community planting to be provided and the Tin Sau Bazaar require meticulous landscape coordination with various stakeholders.</p> <p>Frequent liaison with other authorities for the preservation of more than 500 existing trees is required.</p>
Hoi Sham Park extension for Waterfront Promenade and Reprovisioning of Tennis Courts from Ko Shan Road Park	2.1	<p>The project scope includes the development of open space at Ma Tau Kok Waterfront to meet the demand for open space and improve the recreational facilities in the Kowloon City District. This project serves as a catalyst and a pioneer in revitalizing the district. The project has considered the distinctive atmosphere and character of the site, respecting the historical, cultural and social aspects of the place. Not only it has taken the future infrastructures, particularly the MTR station, into consideration, it imagines the position of the project in the context of the future.</p> <p>The core of the design strategy is based on a community-oriented mentality. The park features 4 tennis courts and associated changing room facilities, a 20-metre wide waterfront promenade with attractive features and modern recreation area that integrates with the retaining part of Hoi Sham Park, a</p>

Name of projects	Landscape area (ha)	Project and Landscape Information
		<p>kiosk/light refreshment restaurant, amenity lawn area with rain shelters and/or arbours as well as other re-provisioning of facilities including main pavilion, chess tables, children's play area, elderly fitness area, park office and service yard etc.</p> <p>Landscape architect takes up the role of Design Team Leader (DTL) in this project. The discipline has different perspectives in elaborating public space compatible to modern architecture and urbanism discussion. This project explores an experimental design and management hierarchy that induces creativity and innovation.</p>
Open Space Development at Hung Hom Waterfront	2.05	<p>The scope of the project includes a standard basketball court, landscaped areas, a children's play area, seating areas with rain shelters, ancillary facilities, as well as beautification of the waterfront promenade by adding features of interest at entrances, providing attractive garden furniture, fitness stations etc. Nearly 40% green coverage will be achieved by appropriate planting design to compliment the design concept of 'ship building'.</p> <p>Landscape architect serves as the DTL of the project. Various statutory compliance submissions under the supervision of DTL and liaison with other authorities on the preservation of about 120 nos. of existing trees are required.</p>
Signature Project Scheme (Central and Western District) - Harbour Enhancement and Revitalisation at the Western Wholesale Food Market	0.13	The scope of this project is to enhance the connectivity of existing Western Harbourfront by providing a landscaped promenade outside the Agriculture, Fisheries and Conservation

Name of projects	Landscape area (ha)	Project and Landscape Information
		<p>Department's Western Wholesale Food Market. It aims to improve the living quality and upgrade the existing facilities by providing children play areas and sitting-out areas with arbours along the harbourfront and on the existing piers. The overall design targets to strengthen the compatibility with surroundings and improve amenity value by providing lawn areas on piers and peripheral planting of trees, shrubs, groundcovers and vertical greening with trailing plants on wiring system in planters along fence walls, which contributes to approx. 0.13 ha total site coverage of greenery.</p> <p>The tree planting and turfing adjacent to seaside required special landscape input from planning, design to implementation which includes careful selection of suitable plant/lawn species, intensive coordination and supervision of the contractor's works to ensure quality delivery of the project.</p>

**Job Description of
Chief Landscape Architect**

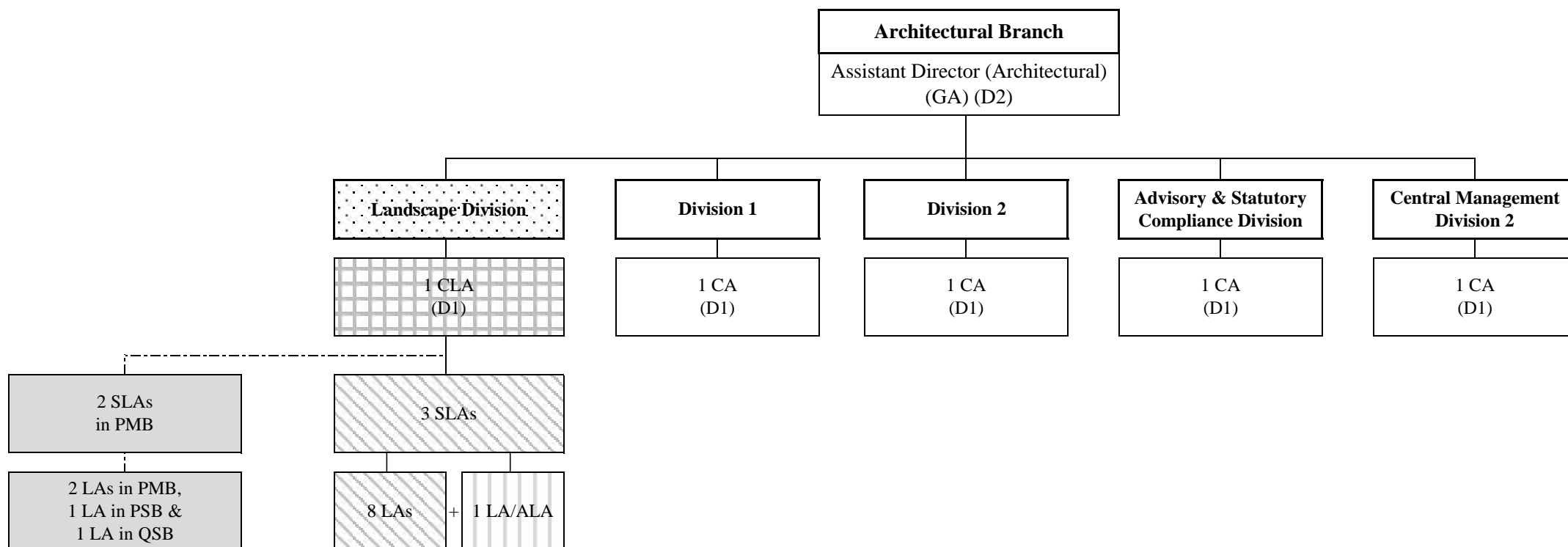
Rank : Chief Landscape Architect (D1)

Responsible to : Assistant Director/Architectural (D2)






Main Duties and Responsibilities –

1. To be responsible for the administration and effective operation of landscape team in the public works projects under Architectural Services Department's purview and to ensure the provision of high-level landscape architectural steering and central coordination to all the relevant public works projects.
2. To provide professional steer and clear directives in an integrated and innovative manner, ensuring greening and landscape policies and initiatives are incorporated comprehensively and implemented into the projects with quality result.
3. To monitor and uphold the overall standard and quality of landscape architectural input delivered by landscape team through strategic planning and implementation.
4. To lead research and promote best practices of landscape design having regard to overseas experience and local situation; and to formulate design guidelines to the advancement of the landscape technology for public works projects.
5. To provide effective collaboration and professional support for the Development Bureau, other bureaux/departments and relevant stakeholders on landscape design and tree management matters.

Proposed Organisation Chart for the New Landscape Division under Architectural Branch, Architectural Services Department



Legend:

-  - Proposed new Landscape Division
-  - Proposed new CLA post to be approved by the Legislative Council Finance Committee
-  - Proposed new LA/ALA post to be approved by the Director of Architectural Services
-  - Existing SLA and LA posts to be redeployed from Division 1 of Architectural Branch to the new Landscape Division
-  - Existing SLA and LA posts in Project Management Branch, Property Services Branch and Quantity Surveying Branch to be supervised by the CLA indirectly

ALA - Assistant Landscape Architect
 CA - Chief Architect
 CLA - Chief Landscape Architect
 GA - Government Architect
 LA - Landscape Architect
 SLA - Senior Landscape Architect

PMB - Project Management Branch
 PSB - Property Services Branch
 QSB - Quantity Surveying Branch