

**LegCo Subcommittee to Follow Up**  
**Issues Relating to the Three-runway System**  
**at the Hong Kong International Airport**

**Hong Kong International Airport's**  
**Enhancement Plan**

**Airport Authority Hong Kong**

**12 June 2017**



# A Three-Pronged Approach

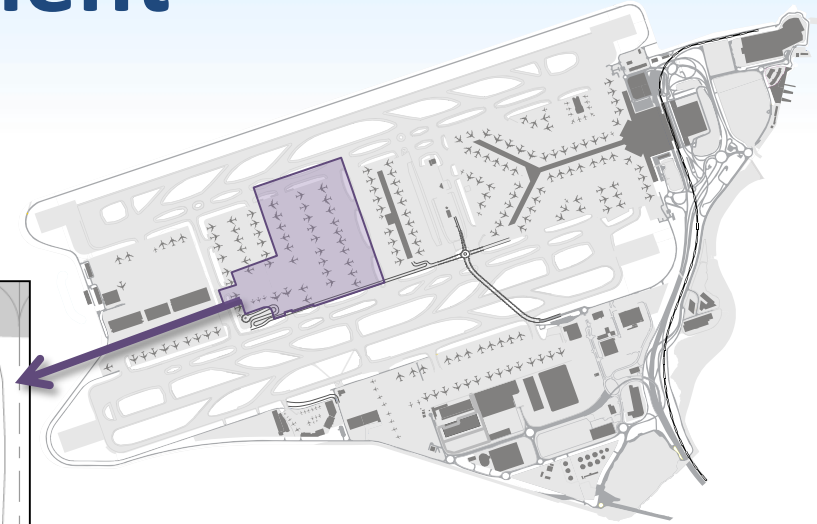
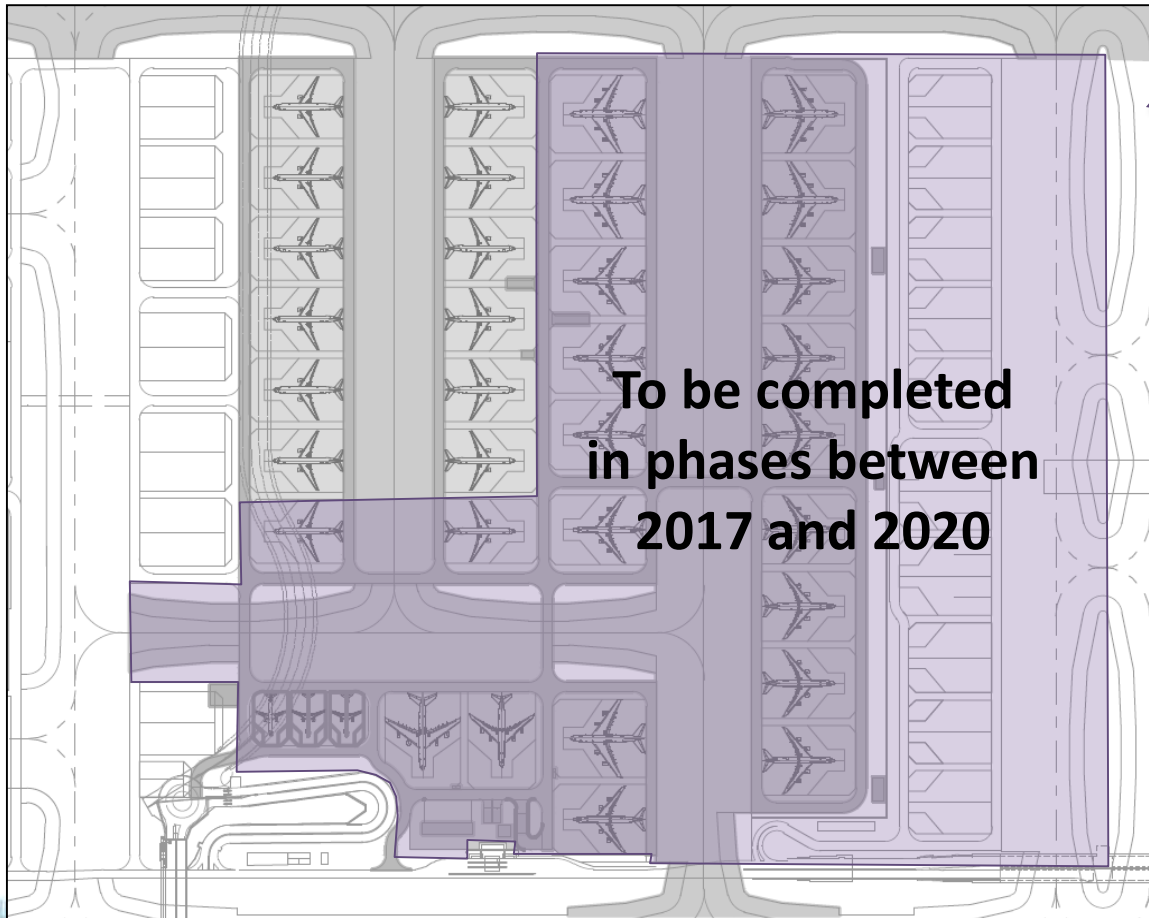
1. Expansion of facilities
2. Process improvement
3. Application of technologies



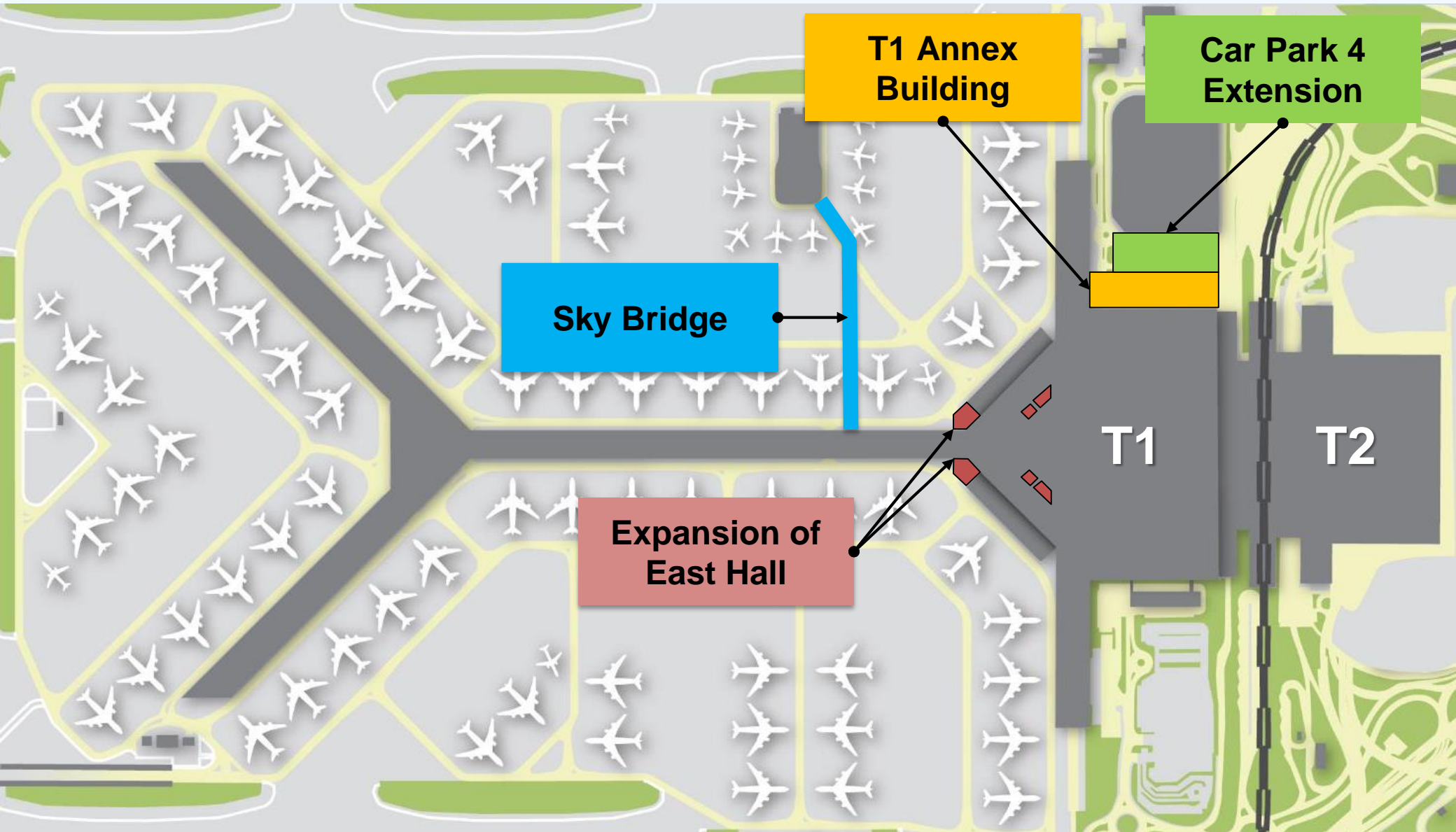
# Expansion of Facilities



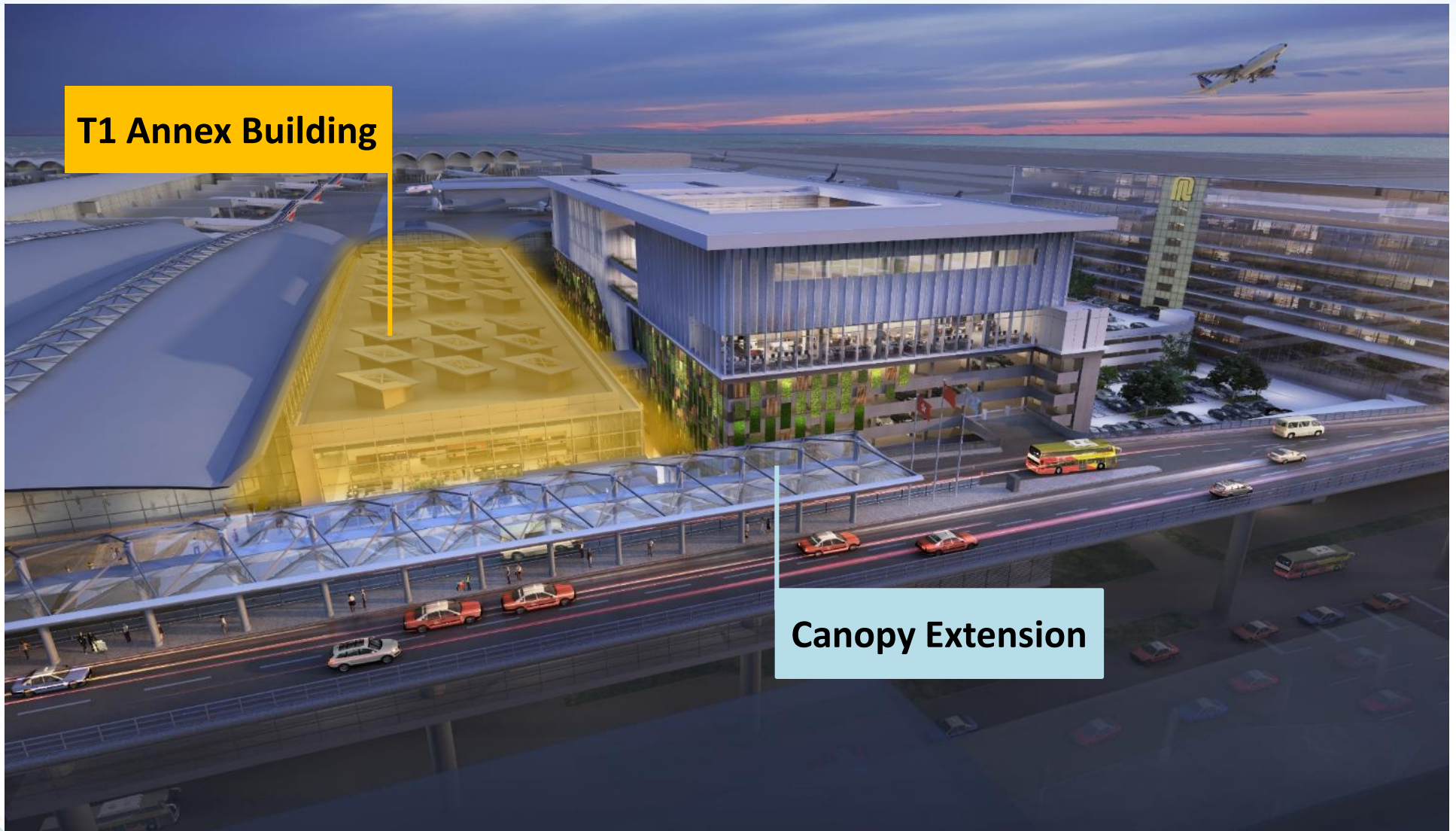
# Midfield Apron Development



# T1 Expansion



# T1 Annex Building

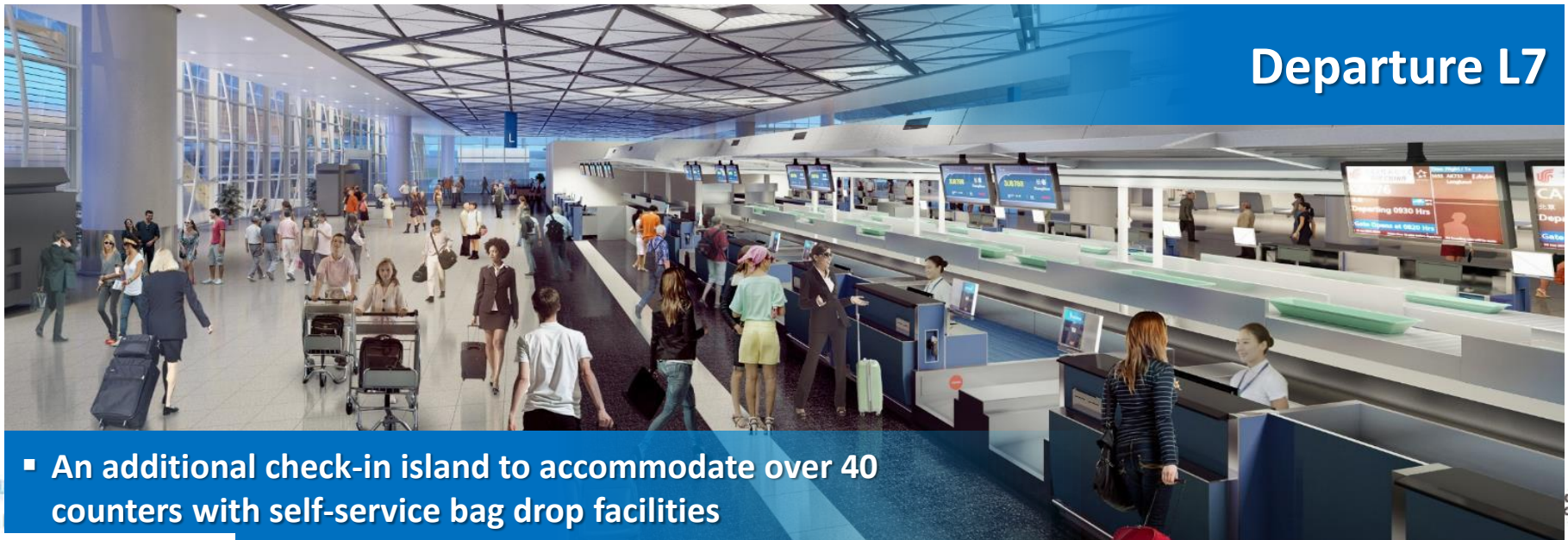
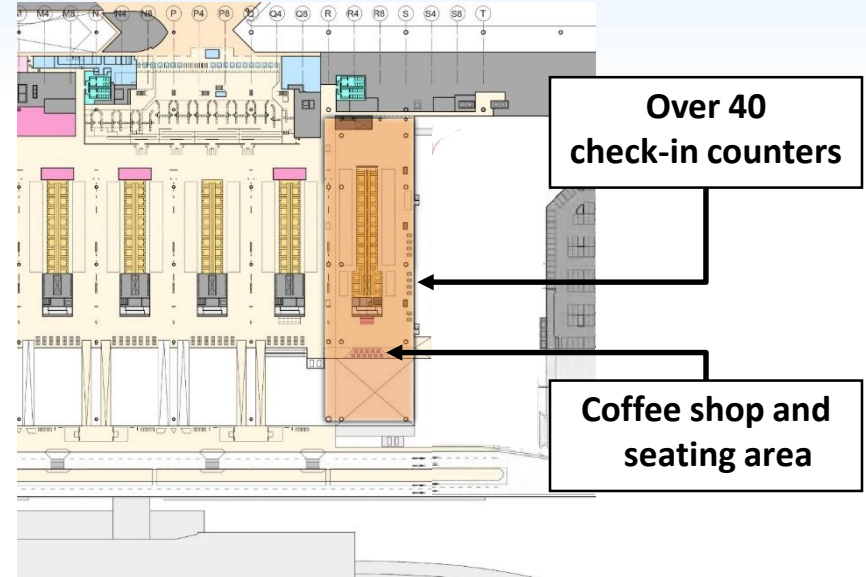
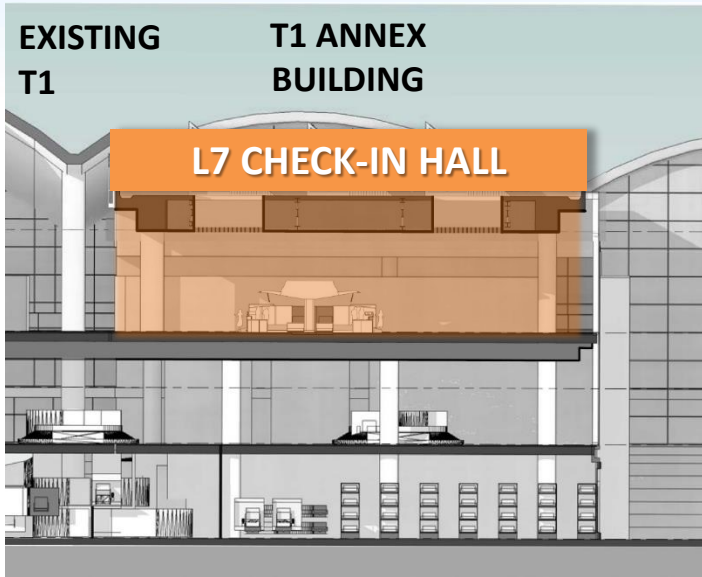


T1 Annex Building

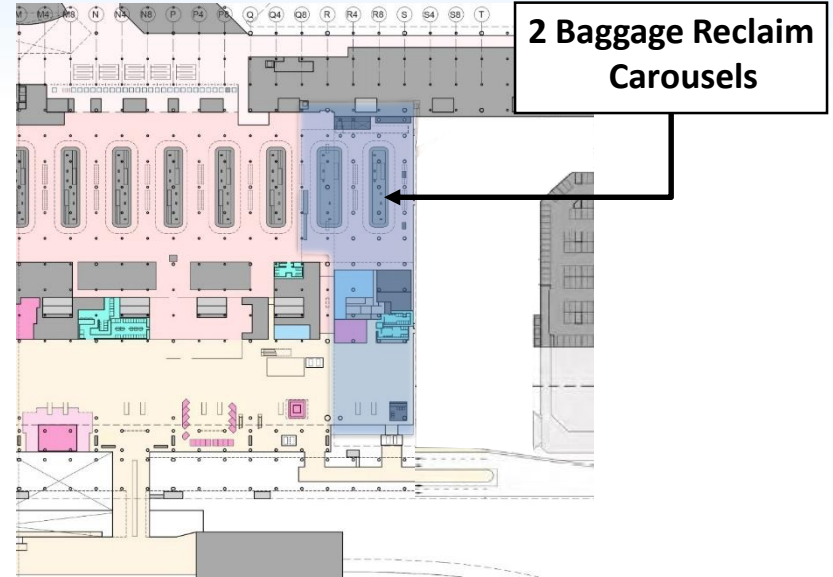
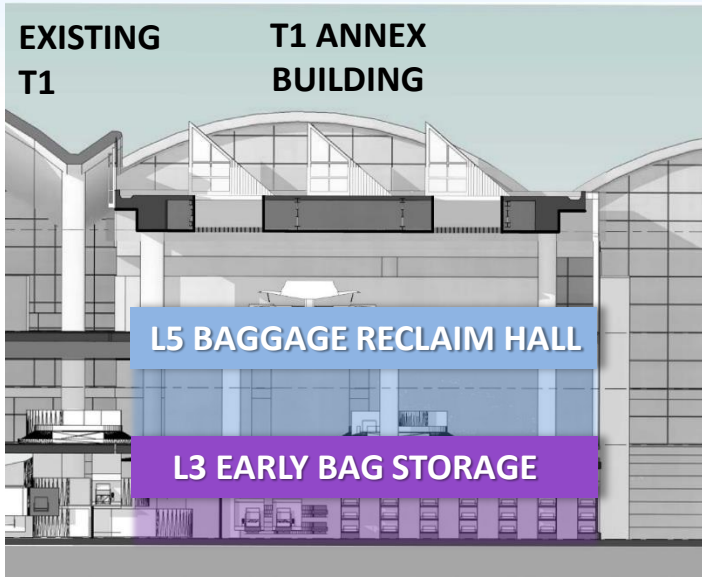
Canopy Extension



# T1 Annex Building – Level 7 Check-in Hall



# T1 Annex Building – Baggage Handling Facilities





# Expansion of East Hall – North

## East Hall North



- The new East Hall food court



- Special Caring Corner
- Open Roof Garden



# Expansion of East Hall – South

## East Hall South

- A children's play zone with Hong Kong's landmark architecture





# Car Park 4 Extension

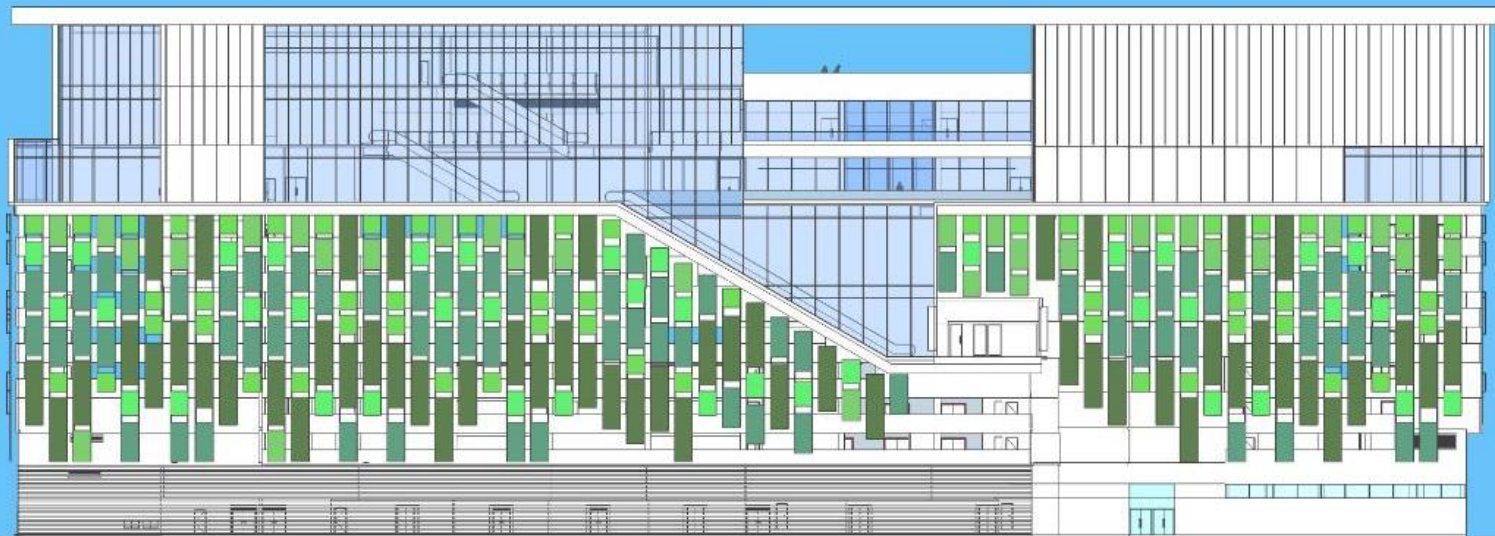
Airport Preschool at GF



Hong Kong International Aviation Academy at 9F



Staff Community Centre at 10F



**11F**

- Staff Restaurant
- Roof Garden

**10F**

- Staff Food Court
- Staff Community Centre

**9F**

- Technovation Centre
- Hong Kong International Aviation Academy

**1F – 8F**

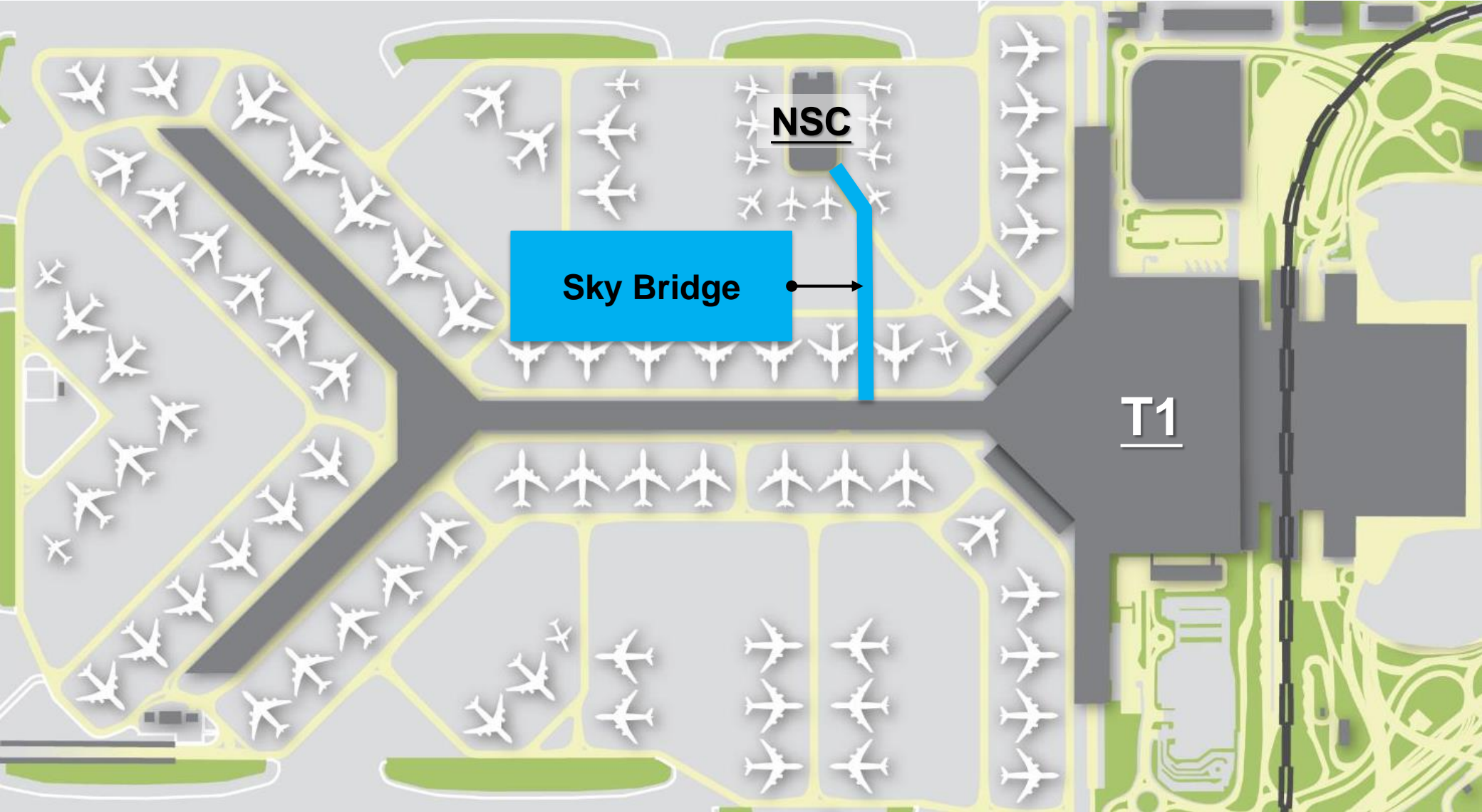
- Public Car Park

**GF**

- Airport Preschool
- Gov't VIP Car Park

# Sky Bridge

Passenger Corridor Linking T1 and the North Satellite Concourse



\*For illustrative purpose only.

# Process Improvement



# Airport Collaborative Decision Making (A-CDM)

Aerobahn: TaxiView: Hong Kong International Airport

System Workspace Settings Tools Reporting Help

Legend Playback Pause Search

Mode: Live | 03/15/2017 12:32:04 UTC

CTOT Active: 1 | E/TOBT Alert: 0 | TOBT <40': 13 | TOBT +/- 5' window: 2 | Miss TOBT <4': 0 | TSAT +/- 5' window: 2 | TSAT Lost: 2 | Completed S&P: 0

12:32:04 UTC

All A-CDM Flights - 53 Flights HKG - All A-CDM Active Flights

Alert	Call Sign	I-ELDT L	Call Sign Out	Gate Assign (A...	E/ABT (Aers)	EOBT (AT...	TOBT/POB...	TSAT/PSAT (A...	AOBT (Aers)	TTOT (ACD...	CTOT L
0	CPA370		SUB97	D201	E16	12:04	11:44				
0	CPA358		CPA300	E18	E18	12:34	12:34	12:31		12:58	
0	CEB150		CEB149	D205	D205	12:34	12:34	12:31		12:51	
0	CEB240		CEB241	D203	D203	12:44	12:44	12:44		12:56	
0	EVAB91		EVAB92	N60	N60	12:49	12:49	12:49		13:00	
0	CPA457		HKE1922	D219	D219	12:49	12:49	12:49		13:02	
0	CPA457		CPA795	N64	N64	12:59	12:59	(12:37)		14:07	14:10
0	CPA457		HDA859	W46	W46	12:59	12:59	(12:59)		13:11	
0	CPA457		ANM112	N26	N26	12:59	12:59	(12:59)		13:09	
0	CPA457		CPA450	W66	W66	12:59	12:59	(12:59)		13:16	
0	MDA1819		AMW336	D211	D211	13:04	13:04	(13:04)		13:14	
0	MDA1819		MDA1822	S41	S41	13:09	13:09	(13:09)		13:19	
0	MDA1819		HDA950	S27	S27	13:14	(13:14)	(13:14)		13:26	
0	CAL823		UAL180	W67	W67	13:14	(13:14)	(13:14)		13:24	
0	HDA451		CAL524	S33	S33	13:19	(13:19)	(13:19)		13:29	
0	HDA451		HDA820	E17	E17	13:24	(13:24)	(13:24)		13:34	
0	HDA451		THA699	W44	W44	13:24	(13:24)	(13:24)		13:36	
0	HDA451		HDA516	D207	D207	13:29	(13:29)	(13:29)		13:39	
0	HDA451		HDA810	S21	S21	13:34	(13:34)	(13:34)		13:44	
0	HDA451		CEB111	D208	D208	13:39	(13:39)	(13:39)		13:49	
0	HDA451		CPA420	E2	E2	13:39	(13:39)	(13:39)		13:51	
0	HDA451		AMW139	D203	D203	13:49	(13:49)	(13:49)		14:01	
0	HDA451		CSZ8992	D209	D209	13:49	(13:49)	(13:49)		14:01	
0	HDA451		CRK218	D218	D218	13:54	(13:54)	(13:54)		14:04	
0	HDA451		CSN8378	N28	N28	14:04	(14:04)	(14:04)		14:04	
0	HDA451		HDA380	N38	N38	14:04	(14:04)	(14:04)		14:04	
0	HDA451		CAL902	CAL904	S21	14:04	(14:04)	(14:04)		14:04	
0	HDA451		HKE3274	HKE3870	V135	14:04	(14:04)	(14:04)		14:04	
0	HDA451		DAL38	S29	S29	14:04	(14:04)	(14:04)		14:04	
0	HDA451		AFU213	E15	E15	14:04	(14:04)	(14:04)		14:04	
0	HDA451		UAL896	W68	W68	14:09	(14:09)	(14:09)		14:09	
0	HDA451		CRK497	CRK189	D219	14:14	(14:14)	(14:14)		14:14	
0	HDA451		CRK174	CRK896	D218	14:24	(14:24)	(14:24)		14:24	
0	HDA451		QTR8418	QTR8419	C22	14:24	(14:24)	(14:24)		14:24	
0	HDA451		CRK129	CSN3078	N20	14:24	(14:24)	(14:24)		14:24	
0	HDA451		CRK129	CRK107	D210	14:29	(14:29)	(14:29)		14:29	
0	HDA451		CRK129	CRK113	F113	14:29	(14:29)	(14:29)		14:29	

Surface Display

Aerobahn: TaxiView: Hong Kong International Airport

System Workspace Settings Tools Reporting Help

Legend Playback Pause Search

Mode: Live | 03/15/2017 12:36:31 UTC

CTOT Active: 1 | E/TOBT Alert: 0 | TOBT <40': 14 | TOBT +/- 5' window: 2 | Miss TOBT <4': 1 | TSAT +/- 5' window: 2 | TSAT Lost: 1 | Completed S&P: 0

12:36:31 UTC

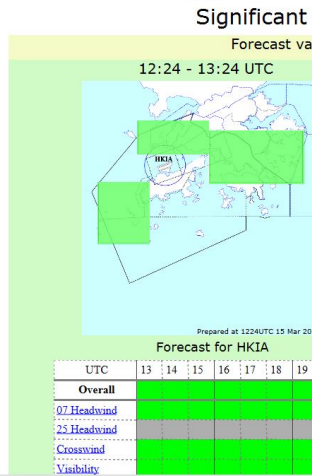
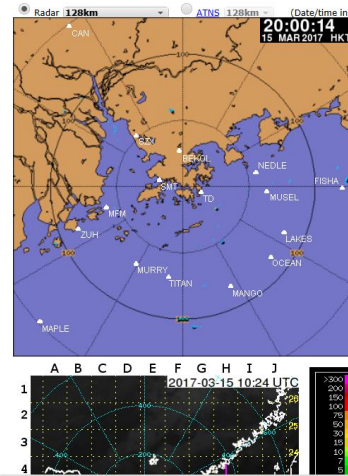
Flight Details - HDA618

Properties Taxi Route ActiveRules Flow Restrictions

Field	Value
CDM Alerts	
CDM Operational Status	Sequenced
Operational State	No Surveillance Outbound
Call Sign Inbound	
Inbound - Estimated Landing Time (ATC)	
Call Sign Outbound	HDA618
Estimated Off Block Time (ATC)	12:34
Target Off Block Time (Aerobahn)	12:34
Actual Off Block Time (Aerobahn)	
Preliminary Startup Approval Time	
Actual Ready Time (Aerobahn)	
Actual Startup Request Time (Aerobahn)	
Actual Startup Approval Time (Aerobahn)	
Target Take off Time (ACDM)	12:54
Calculated Takeoff Time (Aerobahn)	
Actual Take Off Time (Aerobahn)	

Surface Display Flight Details Notifications

Image Viewer







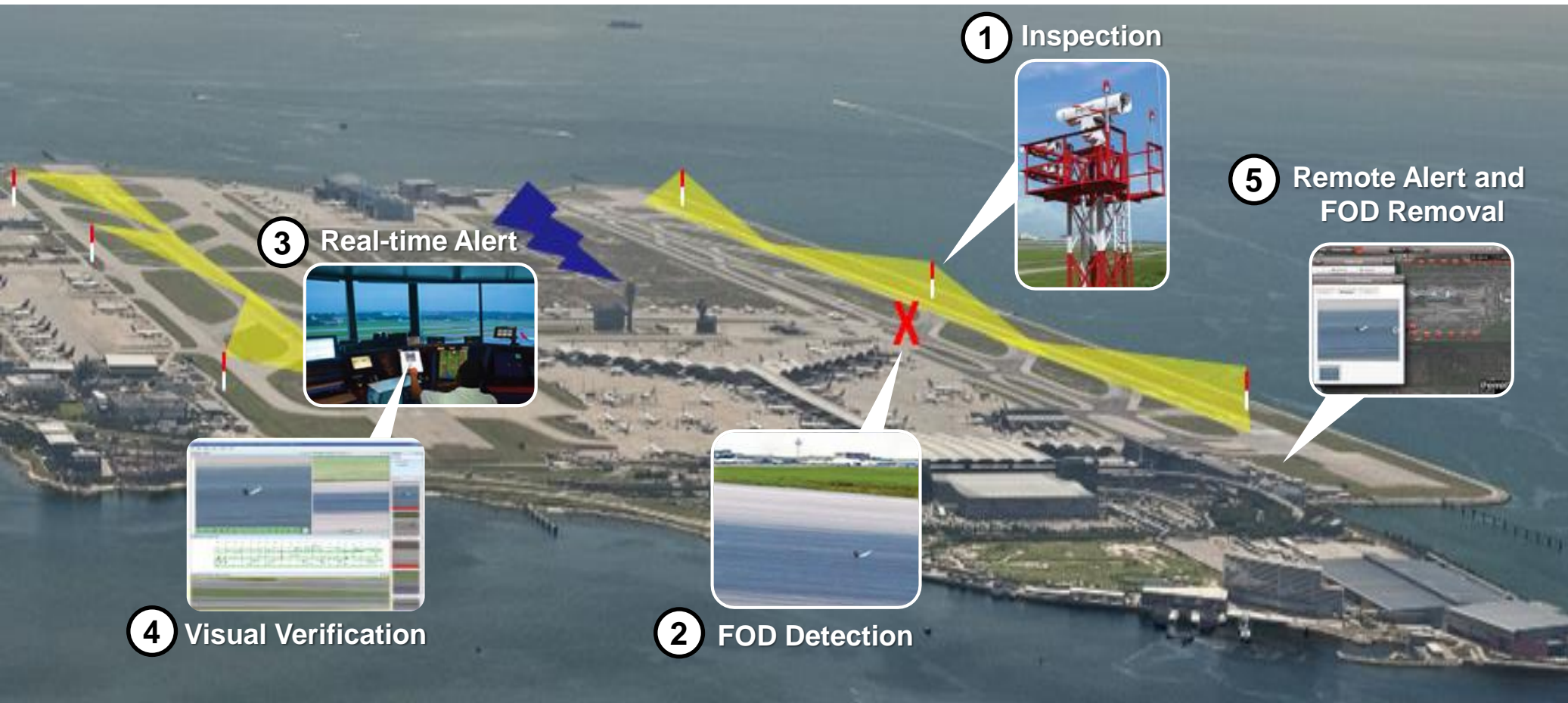
# Self-service Bag Drop



# • Application of Technologies •



# Automated Foreign Object Debris (FOD) Detection



# Vehicle Tracking on the Airside



# THANK YOU

