

**立法會**  
**Legislative Council**

LC Paper No. CB(4)243/16-17(04)

Ref. : CB4/PS/1/16

**Panel on Transport**

**Subcommittee on Matters Relating to Railways**  
**Meeting on 9 December 2016**

**Updated background brief on the construction of**  
**the South Island Line (East) and Kwun Tong Line Extension**

**Purpose**

This paper provides updated background information on the construction of the South Island Line (East) ("SIL(E)") and Kwun Tong Line Extension ("KTE"). It also summarizes the major views and concerns expressed by the Legislative Council Members during previous discussions on the subject.

**Background**

South Island Line (East)

2. SIL(E) is a seven-kilometre long medium capacity railway running from South to North of Hong Kong Island. It starts from South Horizons on Ap Lei Chau to Admiralty via Lei Tung, Wong Chuk Hang and Ocean Park. SIL(E) will connect MTR Island Line, Tsuen Wan Line and the future Shatin to Central Link ("SCL") at Admiralty Station. The existing Admiralty Station will be expanded to form an integrated station for the four lines (i.e. Island Line, Tsuen Wan Line, SIL(E) and SCL) to provide seamless interchanges for passengers. The alignment plan for SIL(E) is in **Appendix I**.

## Kwun Tong Line Extension

3. KTE, which is an approximately 2.6 kilometres extension of MTR Kwun Tong Line, runs from Yau Ma Tei Station to a new station in Whampoa Garden and with an interchange with SCL at Ho Man Tin Station. The alignment plan of KTE is in **Appendix II**.
4. The key information of SIL(E) and KTE is in **Appendix III**.

### **Project implementation and funding mode**

5. SIL(E) and KTE, being the extensions of the existing railway networks owned by the MTR Corporation Limited ("MTRCL"), are implemented under the ownership approach<sup>1</sup>. The Administration and MTRCL signed the project agreement for SIL(E) and KTE in May 2011. The original target commissioning dates for KTE and SIL(E) were August 2015 and December 2015 respectively. In November 2014, MTRCL revised the target opening dates of KTE and SIL(E) to mid and end of 2016 respectively<sup>2</sup>. KTE was eventually commissioned on 23 October 2016. On 10 November 2016, MTRCL announced that SIL(E) would be commissioned in December 2016. The overall progress of SIL(E) is generally in line with the revised baseline programme.<sup>3</sup>
6. According to the estimation of MTRCL<sup>4</sup> in August 2015, the construction costs of SIL(E) and KTE were \$16.9 billion<sup>5</sup> and \$7.2 billion<sup>6</sup> respectively (in money-of-the-day prices). As the construction costs of the railways are enormous, the railway projects are considered

---

<sup>1</sup> Under the ownership approach, MTRCL will be responsible for the financing, design, construction and operation and maintenance of the railway projects, and will own the railways.

<sup>2</sup> LC Paper No. CB(1)260/14-15(03)

<sup>3</sup> LC Paper No. CB(4)152/16-17(01)

<sup>4</sup> LC Paper No. CB(4)1412/14-15(01)

<sup>5</sup> MTRCL advised in 2011 that the estimated capital cost of SIL(E) was \$12.4 billion (in December 2009 prices). It further advised in November 2014 that the cost had increased to \$15.2 billion (in money-of-the-day prices). According to MTRCL's latest estimate in August 2015, the construction cost of SIL(E) has been further revised upward to \$16.9 billion (in money-of-the-day prices) due to the complexity of the project and continued challenges encountered.

<sup>6</sup> MTRCL advised in 2011 that the estimated capital cost of KTE was \$5.3 billion (in December 2009 prices). According to MTRCL's latest estimate in August 2015, the construction cost of KTE has been adjusted upward to \$7.2 billion (in money-of-the-day prices) owing to the complexity of the project and continued challenges encountered.

not financially viable based on their fare and non-fare revenues alone. To implement SIL(E) and KTE, the Administration granted in 2011 the topside property development rights at Wong Chuk Hang Depot and Ho Man Tin Station under the rail-plus-property model for SIL(E) and KTE projects respectively to bridge the funding gaps<sup>7</sup> of the two projects, with caution that the land granted to MTRCL should not be more than what is required to bridge the funding gap<sup>8</sup>. As the two railways are ownership projects, MTRCL will be responsible for the additional expenditure arising from the delay of the railway works.

### **Essential Public Infrastructure Works related to railway projects**

7. In order to tie in with the commissioning of SIL(E) and KTE, the Administration entrusted the implementation of the associated Essential Public Infrastructure Works ("EPIW") to MTRCL. They include construction and improvement of the pedestrian and linking facilities for providing convenient access to railway stations so that the consequential social and economic benefits of the railways can be fully realized. The layout plans of EPIW of SIL(E) and KTE are in **Appendices IV** and **V** respectively.

8. On 15 April 2011, the Finance Committee ("FC") approved the funding proposals to upgrade 56TR to Category A at an estimated cost of \$927 million in money-of-the-day prices for EPIW of SIL(E) and to upgrade 60TR to Category A at an estimated cost of \$826.9 million in money-of-the-day prices for EPIW of KTE.<sup>9</sup> The project scope and the breakdown of the cost of the project for SIL(E)<sup>10</sup> is in **Appendix VI** and that for KTE<sup>11</sup> is in **Appendix VII**.

---

<sup>7</sup> A railway is considered not financially viable if the present value of all its projected revenues net of projected expenditures falls short of the expected return on capital. For any new railway project, the return required by MTRCL would ordinarily be between 1% and 3% above the weighted average of cost of capital. This shortfall is known as the funding gap.

<sup>8</sup> Being granted the property development rights, MTRCL is responsible for all the costs of the property development as well as the construction and operating costs of the railway projects. In addition, it has to bear long term risks in financing the projects, operating the railways, and market fluctuations in rail and property development.

<sup>9</sup> LC Paper No. FC118/10-11

<sup>10</sup> LC Paper No. PWSC(2010-11)33

<sup>11</sup> LC Paper No. PWSC(2010-11)32

9. In November 2016, the Administration informed the Subcommittee on Matters Relating to Railways ("the Subcommittee") by means of a progress report that the revised cost of EPIW of SIL(E) would exceed the approved project estimate by \$290 million. According to the information submitted by MTRCL, the cost increase in EPIW is mainly due to (i) unfavourable ground conditions; (ii) more complicated underground utilities; (iii) design revisions to suit actual site conditions; and (iv) provision for price adjustment. The Administration has planned to submit a paper to the Subcommittee in December 2016 and seek the support of members on the increase of the approved project estimate for EPIW. As regards EPIW of KTE entrusted by the Administration to MTRCL, MTRCL had completed further review of the construction cost. The results indicated that the relevant construction cost should be within budget.<sup>12</sup>

### **Major concerns raised by Members**

10. Members have expressed views and concerns on SIL(E) and KTE at the Subcommittee meetings, special FC meetings and Council meetings. Their major views and concerns are summarized in the ensuing paragraphs.

#### Progress of the railway projects

11. Members have expressed grave concern about the delay in the construction of new railway projects in recent years, including SIL(E) and KTE, and urged both the Administration and MTRCL to review the underlying reasons for the delay, such as over-estimation of MTRCL's capability in managing so many railway projects simultaneously.

12. At the Subcommittee meeting on 19 May 2015, members expressed concern that the persistent delay of works at Whampoa Station of KTE had adversely affected the residents and traffic in the vicinity. Some members also expressed worry that the underpinning works for the construction of SIL(E) beneath Island Line of Admiralty Station might affect the safety and train services of Island Line.

13. MTRCL noted views expressed by residents in the vicinity of Whampoa Station regarding the construction, and had put in place measures to minimize inconvenience caused to the public, such as shortening the construction works from 24-hour to between 7:00 am and

---

<sup>12</sup> LC Paper No. CB(4)152/16-17(01)

11:00 pm. It also planned to start reinstating the road surface by the end of 2015. One of the carriageways at Shung King Street was re-opened to traffic from late November 2015. As regards SIL(E), the underpinning works for the existing Island Line at Admiralty Station were carefully planned to mitigate the risks involved, and monitoring instruments were installed to identify any movement that might occur during the excavation works and allow corrective actions to be taken. With 83% of the excavation for the underpinning works completed as at the end of March 2015, only small amount of expected movements were identified.

#### Financing arrangements

14. In view of the delay in the construction of SIL(E) and KTE, some Subcommittee members expressed concern about whether the Administration or MTRCL would bear the extra cost to be incurred by the delay in the railway projects. In response, the Administration explained that SIL(E) and KTE were implemented under ownership approach, which meant MTRCL was responsible for the construction costs. In addition, according to the project agreements signed by the Administration and MTRCL, MTRCL should try its best endeavours to complete the railway projects in accordance with the baseline programme. As regards the delay in the construction of the new railway lines, the Administration would follow it up with legal advisers.

15. Some Subcommittee members were worried that MTRCL might increase MTR fares so as to cover the cost overrun of SIL(E) and KTE, and the interests of the passengers would be undermined. The Administration and MTRCL advised that as these railway lines were extensions of existing MTR lines, their fares would adopt the same fare structure of the existing MTR heavy rail system. For the adjustment of MTR fares, it would be done according to the Fare Adjustment Mechanism, taking into account the changes in the Composite Consumer Price Index, the Nominal Wage Index (Transportation Section) and pre-determined productivity factor, any increase in the construction cost of new railway projects would not affect MTR fares.

#### Coordination of public transport services

16. Some Members expressed concern about how the public transport services would be coordinated with the commissioning of SIL(E) and KTE. They were worried about the impact of the commissioning of KTE and SIL(E) on the patronage of various public transport services,

including taxis, red and green minibuses, and franchised buses, in the districts concerned. The Administration responded that the Transport Department would assess the impact of the commissioning of the new railway lines on other road-based public transport services, and would formulate reorganization plans to enhance the operational efficiency of different public transport services.

17. According to the Administration, the daily patronage of road-based public transport services in Ho Man Tin district and Whampoa district was assessed to be around 750 000 passenger trips. Upon the commissioning of KTE, its daily patronage was estimated to be around 180 000 passenger trips. The Transport Department would implement the public transport reorganization plan in phases, such included the introduction of four new feeder green minibus routes serving the new MTR stations and cancellation of one franchised bus route and one green minibus route which overlap with the service area of the new railway services. In addition, the frequencies of 33 franchised bus routes and 13 green minibus routes will be adjusted and one franchised bus route will be truncated. Regarding red minibuses and taxis, although their services do not have fixed routes, the Transport Department introduced to the urban taxis trade and red minibus trade respectively the alignment and station locations of KTE and SIL(E), as well as the pick-up and drop-off facilities for red minibuses and taxis outside the stations in the four conferences with the trade held in the past three years. The Transport Department also encouraged taxi and red minibus trades to actively expand new customer base for feeder services to railway stations, so as to reduce the impact of the commissioning of KTE and SIL(E) on taxi and red minibus services.

#### Fully Automatic Operation of the South Island Line (East)

18. The Subcommittee members noted that Fully Automatic Operation ("FAO") would be introduced for the operation of SIL(E). Under the operation of FAO system, preparation for train service including function tests before service, setting trains in motion, speed control, train stopping, as well as door opening and closing would be fully automatic under the control of Operations Control Centre with preset commands. Some members, however, expressed concern on passenger safety during emergency under FAO system. The Administration assured members that they attached great importance to safety of train operations and that before the commissioning of SIL(E), they would request MTRCL to provide detailed contingency plans to handle any service disruptions for the review of the Electrical and Mechanical Services Department.

### Other issues

19. Members also expressed views and concerns on the following issues:

- (a) review of the monitoring mechanism for railway project, considering that a huge amount of public money had been spent on the dedicated teams under the Highways Department;
- (b) provision of facilities to cater for the needs of persons with disabilities or special needs and other new facilities at SIL(E) and KTE stations;
- (c) artwork display at SIL(E) and KTE stations; and
- (d) environmentally-friendly designs and measures for SIL(E) and KTE to enhance energy efficiency and reduce noise of running trains.

### **Latest developments**

20. The Administration plans to seek the Subcommittee members' support at the meeting to be held on 9 December 2016 in increasing the approved project estimate of 56TR entitled "South Island Line (East)—essential public infrastructure works" by \$286.2 million (in money-of-the-day prices), compared to \$927 million approved by FC in 2011. Also, the Administration will brief members on the latest progress of the construction of SIL(E) and the completion of KTE at the same meeting.

### **Relevant papers**

21. A list of relevant papers is in **Appendix VIII**.

附錄I  
Appendix I

圖例  
LEGEND

- 現有鐵路路線  
EXISTING RAIL LINE
- 南港島線（東段）  
SOUTH ISLAND LINE (EAST)



南港島線（東段）  
SOUTH ISLAND LINE (SIL) (EAST)



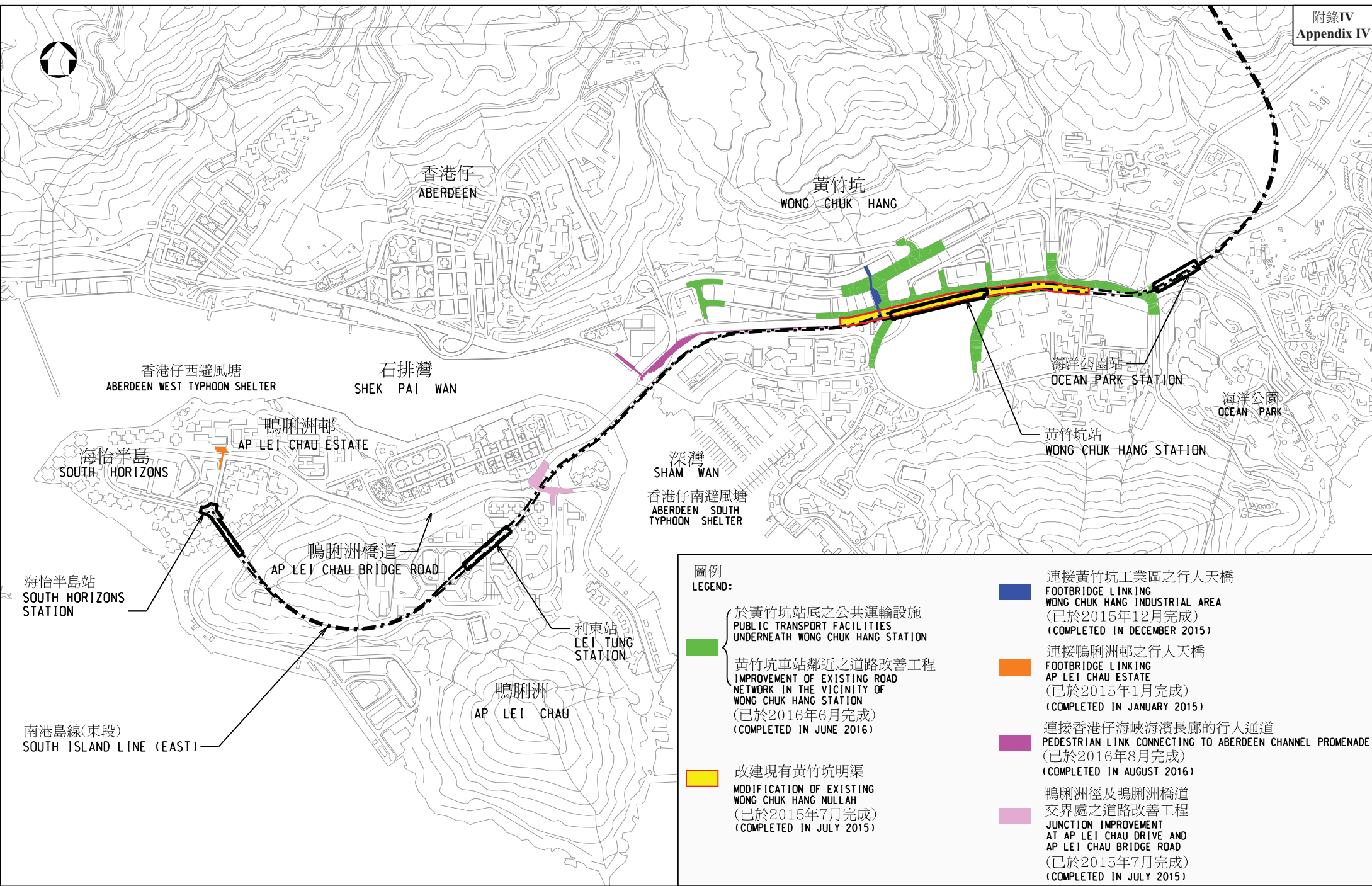
附錄II  
Appendix II



觀塘線延線  
KWUN TONG LINE EXTENSION

**Key information of  
the South Island Line (East) and Kwun Tong Line Extension**

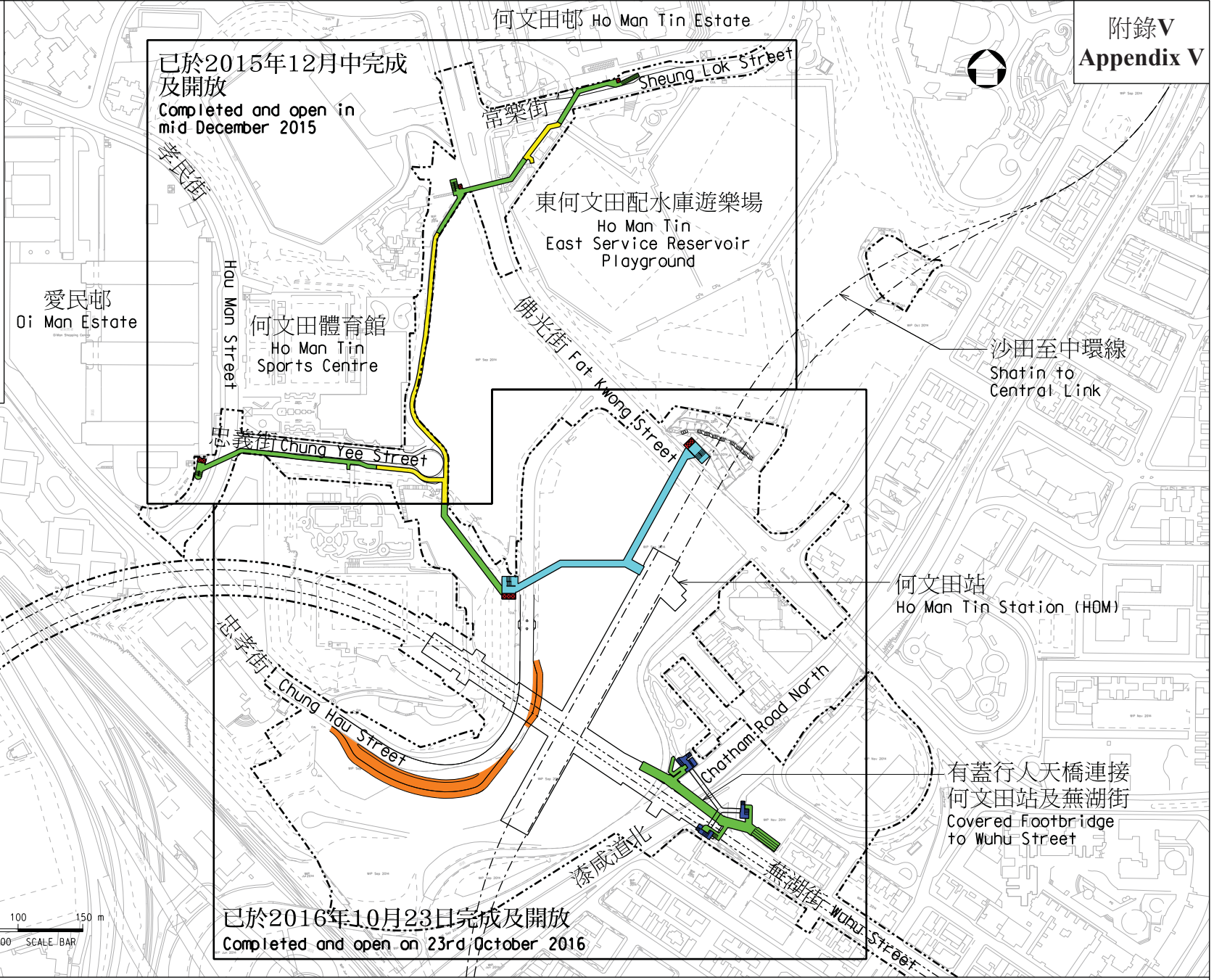
	<b>South Island Line (East)</b>	<b>Kwun Tong Line Extension</b>
<i>Length of the rail line</i>	7 km	2.6 km
<i>Estimated construction cost</i>	\$12.4 billion	\$5.3 billion
<i>The MTR Corporation Limited's ("MTRCL") latest estimated construction cost</i>	\$16.9 billion (\$4.5 billion increased)	\$7.2 billion (\$1.9 billion increased)
<i>Funding arrangement</i>	Implemented under the ownership approach  MTRCL granted the property development right of the ex-Wong Chuk Hang Estate to bridge the funding gap of \$9.9 billion	Implemented under the ownership approach  MTRCL granted the property development right of ex-Valley Road Estate Phase 1 site to bridge the funding gap of \$3.3 billion
<i>Works commenced in</i>	2011	2011
<i>Original target commissioning date</i>	December 2015	August 2015
<i>Commissioning date</i>	Targeted commissioning in December 2016	23 October 2016
<i>Journey time</i>	Between Admiralty and South Horizons: 10 minutes	Between Mong Kok and Whampoa: 5 minutes



**圖例**  
**LEGEND:**

- 連接黃竹坑工業區之行人天橋  
FOOTBRIDGE LINKING WONG CHUK HANG INDUSTRIAL AREA (已於2015年12月完成)  
(COMPLETED IN DECEMBER 2015)
- 連接鴨脷洲邨之行人天橋  
FOOTBRIDGE LINKING AP LEI CHAU ESTATE (已於2015年1月完成)  
(COMPLETED IN JANUARY 2015)
- 連接香港仔海峽海濱長廊的行人通道  
PEDESTRIAN LINK CONNECTING TO ABERDEEN CHANNEL PROMENADE (已於2016年8月完成)  
(COMPLETED IN AUGUST 2016)
- 鴨脷洲徑及鴨脷洲橋道交界處之道路改善工程  
JUNCTION IMPROVEMENT AT AP LEI CHAU DRIVE AND AP LEI CHAU BRIDGE ROAD (已於2015年7月完成)  
(COMPLETED IN JULY 2015)
- 改建現有黃竹坑明渠  
MODIFICATION OF EXISTING WONG CHUK HANG NULLAH (已於2015年7月完成)  
(COMPLETED IN JULY 2015)
- 於黃竹坑站底之公共運輸設施  
PUBLIC TRANSPORT FACILITIES UNDERNEATH WONG CHUK HANG STATION
- 黃竹坑車站鄰近之道路改善工程  
IMPROVEMENT OF EXISTING ROAD NETWORK IN THE VICINITY OF WONG CHUK HANG STATION (已於2016年6月完成)  
(COMPLETED IN JUNE 2016)

- 圖例：  
Legend:
-  升降機  
Lift
  -  行人天橋  
Footbridge
  -  行人隧道  
Subway
  -  有蓋行人通道  
Covered Walkway
  -  公共交通設施  
Public Transport Facility
  -  保留現有升降機及樓梯  
Existing Lift and Staircase to be Retained



圖則名稱 drawing title

觀塘線延線 - 主要基建工程  
Kwun Tong Line Extension - Essential Public Infrastructure Works

**Project scope of 56TR — South Island Line (East) — Essential Public Infrastructure Works**

Wong Chuk Hang Station area

- (a) Construction of a public transport interchange ("PTI") with floor area of about 2 200 square metres ("m<sup>2</sup>") underneath the proposed Wong Chuk Hang ("WCH") Station including:
  - (i) a double-width bus bay of 12 metres ("m") in length for accommodating eight buses;
  - (ii) a green minibus ("GMB") bay for accommodating four GMBs;
  - (iii) a taxi stand for accommodating six taxis;
  - (iv) general loading/unloading bay of 30m in length; and
  - (v) associated road, drainage, street lighting, electrical and mechanical ("E&M") and landscaping works;
- (b) Improvement of the existing road network in the vicinity of the proposed Ocean Park Station and WCH Station including:
  - (i) widening of a section of Heung Yip Road, which is about 650m in length, from one lane each way to two lanes each way;
  - (ii) realignment of a section of WCH Road which is about 310m in length;
  - (iii) realignment of a section of Ocean Park Road which is about 250m in length;
  - (iv) realignment and widening of a section of Nam Long Shan Road which is about 150m in length;
  - (v) realignment and widening of a section of Police School Road which is about 200m in length;
  - (vi) modification to the road junctions at Heung Yip Road/Ocean Park Road, Heung Yip Road/Police School Road, Heung Yip Road/Nam Long Shan Road, WCH Road/Nam Long Shan Road, and WCH Road/Tong Bing Lane; and

- (vii) associated road, drainage, street lighting, geotechnical, slope works and landscape works;
- (c) Modification of a section of existing WCH nullah which is about 650m in length between Ocean Park Road and Nam Long Shan Road;
- (d) Construction of a covered footbridge of about 180m in length connecting the WCH Station with the adjacent industrial area, which also includes:
  - (i) a staircase and a lift at WCH Road adjacent to the Regency Centre;
  - (ii) a staircase and a lift at the existing Nam Long Shan Road sitting-out area;
  - (iii) a staircase and a lift adjacent to the Nam Long Shan Road Cooked Food Market; and
  - (iv) re-provisioning of the Nam Long Shan Road sitting-out area;

#### South Horizons Station area

- (e) Construction of a covered footbridge of about 80m in length crossing South Horizons Drive and linking the western part of Ap Lei Chau Estate to Yi Nam Road near the Precious Blood Primary School, which also includes:
  - (i) a staircase and a lift adjacent to the Precious Blood Primary School;
  - (ii) re-provisioning of the existing Ap Lei Chau Estate sitting-out area; and
  - (iii) associated road and drainage works;

#### Aberdeen Channel waterfront area

- (f) Construction of a pedestrian link to the Aberdeen Channel Promenade comprising:
  - (i) a covered footbridge of about 36m in length;
  - (ii) a walkway of about 800m in length, between the WCH Station and Kwun Hoi Path;
  - (iii) an open space of 1 140m<sup>2</sup> and a lookout point at the Aberdeen Channel waterfront; and

(iv) associated drainage and landscaping works; and

Lei Tung Station area

(g) Road improvement works at the road junction of Ap Lei Chau Drive and Ap Lei Chau Bridge Road.

**Breakdown of the cost of the project "56TR — South Island Line  
(East) — Essential Public Infrastructure Works"**

		<b>\$ million</b>
(a)	PTI underneath WCH Station	18.7
	(i) road, bus bays, minibus bay, taxi stand, loading/unloading bays	5.5
	(ii) drainage, street lighting, E&M and landscaping works	13.2
(b)	Improvement of the existing road network in the vicinity of WCH Station	73.7
	(i) junction modification	14.3
	(ii) road, drainage, street lighting, geotechnical, slope works and landscaping works	59.4
(c)	Modification of existing WCH nullah	415.8
	(i) foundation	100.1
	(ii) decking works	250.8
	(iii) road, drainage and landscaping works	64.9
(d)	Footbridge link to WCH industrial area	69.3
	(i) footbridge	50.6
	(ii) road, drainage and landscaping works	18.7
(e)	Footbridge link to Ap Lei Chau Estate	16.5
	(i) footbridge	14.5
	(ii) drainage and landscaping works	2.0
(f)	Pedestrian link	53.0
	(i) footbridge	5.0
	(ii) road, drainage and landscaping works	48.0



	<b>\$ million</b>	
(g) Junction improvement at Ap Lei Chau Drive and Ap Lei Chau Bridge Road	5.0	
(h) On-cost payable to the MTR Corporation Limited <sup>1</sup>	107.6	
(i) Contingencies	76.0	
	<hr/>	
	Sub-total	835.6 (in September 2010 prices)
(j) Provision for price adjustment	91.4	
	<hr/>	
	Total	927.0 (in money-of-the-day prices)
	<hr/>	

*(Source: LC Paper No. PWSC(2010-11)33 issued in January 2011)*

---

<sup>1</sup> An on-cost at 16.5% of the project base cost (i.e. items (a) to (g) above) will be payable to the MTR Corporation Limited for undertaking the technical studies, design and construction supervision of the Essential Public Infrastructure Works.

**Project scope of 60TR — Kwun Tong Line Extension — Essential Public Infrastructure Works**

- (a) Construction of a pedestrian link system connecting Ho Man Tin Station to the Ho Man Tin Estate, Oi Man Estate and the Hung Hom area south of Chatham Road North, which includes:
  - (i) covered footbridges of about 2.5 metres ("m") in width and about 330m in total length crossing and along Sheung Lok Street, Fat Kwong Street, Chung Yee Street, and Hau Man Street, with a total of three staircases and four lifts at Fat Kwong Street western footpath, Sheung Lok Street and Oi Man Estate outside Po Man House;
  - (ii) a covered footbridge of about 3.5m in width and about 95m in length connecting Chung Yee Street to Chung Hau Street;
  - (iii) a subway of about 3m to 4m in width and about 205m in length crossing Chung Hau Street and Fat Kwong Street to Ho Man Tin Station, with a total of two staircases and five lifts at Chung Hau Street and Fat Kwong Street eastern footpath;
  - (iv) covered walkways of 2.5m to 3.5m in width and about 270m in total length at the northwest corner of Ho Man Tin East Service Reservoir Playground and along the eastern boundary of Ho Man Tin Sports Centre; and
  - (v) associated road, drainage, electrical and mechanical ("E&M"), geotechnical and landscaping works;
- (b) Construction of a footbridge integrating with the existing footbridge across Chatham Road North and connecting Ho Man Tin Station to Wuhu Street, which includes:
  - (i) a covered footbridge of about 6m in width and about 100m in length across Chatham Road North linking Ho Man Tin Station to Wuhu Street, which integrates with the lifts and staircases of the existing footbridge across Chatham Road North;
  - (ii) three escalators at Wuhu Street Temporary Playground for access to the footbridge described in (i) above;

- (iii) demolition of the existing footbridge decks across Chatham Road North and Wuhu Street; and
  - (iv) associated road, drainage, E&M and landscaping works; and
- (c) Construction of a public transport facility with a floor area of about 1 900 square metres at Chung Hau Street near Ho Man Tin Station, which includes:
- (i) a lay-by of about 160m in length for buses and green minibuses with a covered walkway;
  - (ii) a lay-by of about 30m in length to serve as a drop-off area for taxis and private cars;
  - (iii) modification of a section of Chung Hau Street; and
  - (iv) associated road, drainage, street lighting, E&M, geotechnical and landscaping works.

**Breakdown of the cost of the project "60TR — Kwun Tong Line  
Extension — Essential Public Infrastructure Works"**

	<b>\$ million</b>	
(a) Pedestrian Link connecting Ho Man Tin Station to Ho Man Tin and Oi Man Estate		432.1
(i) footbridges	128.9	
(ii) lifts	67.5	
(iii) covered walkway	27.7	
(iv) subway	122.5	
(v) associated road, drainage, E&M, geotechnical and landscaping works	85.5	
 (b) Footbridge connecting Ho Man Tin Station to Wuhu Street		 68.2
(i) footbridge	57.2	
(ii) escalators	7.5	
(iii) associated road, drainage, E&M and landscaping works	3.5	
 (c) Public transport facility at Chung Hau Street near Ho Man Tin Station		 69.4
(i) bus bays and passenger shelters	57.8	
(ii) road modification	8.1	
(iii) associated road, drainage, street lighting, E&M, geotechnical and landscaping works	3.5	
 (d) On-cost payable to the MTR Corporation Limited <sup>1</sup>		 94.0
 (e) Contingencies		 66.4
	Sub-total	<u>730.1</u> (in September 2010 prices)
 (f) Provision for price adjustment		 96.8
	Total	<u>826.9</u> (in money-of-the-day prices)
		<hr/>

*(Source: LC Paper No. PWSC(2010-11)32 issued in January 2011)*

<sup>1</sup> An on-cost at 16.5% of the project base cost (i.e. items (a), (b) and (c) above) will be payable to the MTR Corporation Limited for undertaking the technical studies, design and construction supervision of the Essential Public Infrastructure Works.

**Appendix VIII**

**Panel on Transport  
Subcommittee on Matters Relating to Railways**

**List of relevant papers on  
the South Island Line (East) and Kwun Tong Line Extension**

**South Island Line (East)**

Date of meeting	Meeting	Minutes/Paper	LC Paper No.
11.1.2008	Subcommittee on Matters Relating to Railways	Legislative Council Brief on the Mass Transit Railway South Island Line	File Reference: THB(T)CR 17/1016/99  <a href="http://www.legco.gov.hk/y r07-08/english/panels/tp/tp_rdp/papers/tp_rdp-thbtcr17101699-e.pdf">http://www.legco.gov.hk/y r07-08/english/panels/tp/tp_rdp/papers/tp_rdp-thbtcr17101699-e.pdf</a>
		Administration's paper on land use planning in Southern District and projected patronage of South Island Line (East) and assessment of impact of South Island Line (East) on other public transport modes	CB(1)520/07-08(03)  <a href="http://www.legco.gov.hk/y r07-08/english/panels/tp/tp_rdp/papers/tp_rdp0111cb1-520-3-e.pdf">http://www.legco.gov.hk/y r07-08/english/panels/tp/tp_rdp/papers/tp_rdp0111cb1-520-3-e.pdf</a>
		Minutes	CB(1)954/07-08  <a href="http://www.legco.gov.hk/y r07-08/english/panels/tp/tp_rdp/minutes/rd080111.pdf">http://www.legco.gov.hk/y r07-08/english/panels/tp/tp_rdp/minutes/rd080111.pdf</a>
2.5.2008	Subcommittee on Matters Relating to Railways	Administration's paper on progress report on the South Island Line	CB(1)1376/07-08(02)  <a href="http://www.legco.gov.hk/y r07-08/english/panels/tp/tp_rdp/papers/tp_rdp0502cb1-1376-2-e.pdf">http://www.legco.gov.hk/y r07-08/english/panels/tp/tp_rdp/papers/tp_rdp0502cb1-1376-2-e.pdf</a>

Date of meeting	Meeting	Minutes/Paper	LC Paper No.
		Minutes	CB(1)1747/07-08  <a href="http://www.legco.gov.hk/yr07-08/english/panels/tp/tp_rdp/minutes/rd080502.pdf">http://www.legco.gov.hk/yr07-08/english/panels/tp/tp_rdp/minutes/rd080502.pdf</a>
12.11.2008	Council Meeting	Hon Mrs Regina IP LAU Suk-yea raised a question on construction works for South Island Line (East)	<a href="http://www.info.gov.hk/gia/general/200811/12/P200811120139.htm">http://www.info.gov.hk/gia/general/200811/12/P200811120139.htm</a>
16.1.2009	Subcommittee on Matters Relating to Railways	Administration's paper on progress report on the South Island Line	CB(1)557/08-09(03)  <a href="http://www.legco.gov.hk/yr08-09/english/panels/tp/tp_rdp/papers/tp_rdp0116cb1-557-3-e.pdf">http://www.legco.gov.hk/yr08-09/english/panels/tp/tp_rdp/papers/tp_rdp0116cb1-557-3-e.pdf</a>
		Minutes	CB(1)1146/08-09  <a href="http://www.legco.gov.hk/yr08-09/english/panels/tp/tp_rdp/minutes/rdp20090116.pdf">http://www.legco.gov.hk/yr08-09/english/panels/tp/tp_rdp/minutes/rdp20090116.pdf</a>
15.5.2009	Subcommittee on Matters Relating to Railways	Administration's paper on progress report on the South Island Line	CB(1)1519/08-09(01)  <a href="http://www.legco.gov.hk/yr08-09/english/panels/tp/tp_rdp/papers/tp_rdp0515cb1-1519-1-e.pdf">http://www.legco.gov.hk/yr08-09/english/panels/tp/tp_rdp/papers/tp_rdp0515cb1-1519-1-e.pdf</a>
		Minutes	CB(1)2605/08-09  <a href="http://www.legco.gov.hk/yr08-09/english/panels/tp/tp_rdp/minutes/rdp20090515.pdf">http://www.legco.gov.hk/yr08-09/english/panels/tp/tp_rdp/minutes/rdp20090515.pdf</a>

Date of meeting	Meeting	Minutes/Paper	LC Paper No.
17.9.2009	Subcommittee on Matters Relating to Railways	Administration's paper on progress report on the South Island Line (East)	CB(1)2582/08-09(03)  <a href="http://www.legco.gov.hk/yr08-09/english/panels/tp/tp_rdp/papers/tp_rdp0917cb1-2582-3-e.pdf">http://www.legco.gov.hk/yr08-09/english/panels/tp/tp_rdp/papers/tp_rdp0917cb1-2582-3-e.pdf</a>
		Administration's response to the major concerns raised by Subcommittee members and deputations at the meeting on 15 May 2009	CB(1)2602/08-09(01)  <a href="http://www.legco.gov.hk/yr08-09/chinese/panels/tp/tp_rdp/papers/tp_rdp0917cb1-2602-1-ec.pdf">http://www.legco.gov.hk/yr08-09/chinese/panels/tp/tp_rdp/papers/tp_rdp0917cb1-2602-1-ec.pdf</a>
		Minutes	CB(1)920/09-10  <a href="http://www.legco.gov.hk/yr08-09/english/panels/tp/tp_rdp/minutes/rdp20090917.pdf">http://www.legco.gov.hk/yr08-09/english/panels/tp/tp_rdp/minutes/rdp20090917.pdf</a>
4.12.2009	Subcommittee on Matters Relating to Railways	Administration's paper on progress report on the South Island Line (East)	CB(1)522/09-10(05)  <a href="http://www.legco.gov.hk/yr09-10/english/panels/tp/tp_rdp/papers/tp_rdp1204cb1-522-5-e.pdf">http://www.legco.gov.hk/yr09-10/english/panels/tp/tp_rdp/papers/tp_rdp1204cb1-522-5-e.pdf</a>
		Minutes	CB(1)1016/09-10  <a href="http://www.legco.gov.hk/yr09-10/english/panels/tp/tp_rdp/minutes/rdp20091204.pdf">http://www.legco.gov.hk/yr09-10/english/panels/tp/tp_rdp/minutes/rdp20091204.pdf</a>

Date of meeting	Meeting	Minutes/Paper	LC Paper No.
9.2.2010	Subcommittee on Matters Relating to Railways	Administration's paper on progress report on the South Island Line (East)	CB(1)1018/09-10(04)  <a href="http://www.legco.gov.hk/yr09-10/english/panels/tp/tp_rdp/papers/tp_rdp0209cb1-1018-4-e.pdf">http://www.legco.gov.hk/yr09-10/english/panels/tp/tp_rdp/papers/tp_rdp0209cb1-1018-4-e.pdf</a>
		Minutes	CB(1)1386/09-10  <a href="http://www.legco.gov.hk/yr09-10/english/panels/tp/tp_rdp/minutes/rdp20100209.pdf">http://www.legco.gov.hk/yr09-10/english/panels/tp/tp_rdp/minutes/rdp20100209.pdf</a>
25.1.2011	Public Works Subcommittee	South Island Line (East) — essential public infrastructure works	PWSC(2010-11)33  <a href="http://www.legco.gov.hk/yr10-11/english/fc/pwsc/papers/p10-33e.pdf">http://www.legco.gov.hk/yr10-11/english/fc/pwsc/papers/p10-33e.pdf</a>
		Minutes	PWSC49/10-11  <a href="http://www.legco.gov.hk/yr10-11/english/fc/pwsc/minutes/pwsc20110125.pdf">http://www.legco.gov.hk/yr10-11/english/fc/pwsc/minutes/pwsc20110125.pdf</a>
15.4.2011	Finance Committee	Minutes	FC118/10-11  <a href="http://www.legco.gov.hk/yr10-11/english/fc/fc/minutes/fc20110415.pdf">http://www.legco.gov.hk/yr10-11/english/fc/fc/minutes/fc20110415.pdf</a>
17.6.2011	Subcommittee on Matters Relating to Railways	Legislative Council Brief on the South Island Line (East) funding arrangement	<a href="http://www.legco.gov.hk/yr10-11/english/panels/tp/tp_rdp/papers/tp_rdp-thb201105a-e.pdf">http://www.legco.gov.hk/yr10-11/english/panels/tp/tp_rdp/papers/tp_rdp-thb201105a-e.pdf</a>



Date of meeting	Meeting	Minutes/Paper	LC Paper No.
		Minutes	CB(1)414/11-12  <a href="http://www.legco.gov.hk/yr10-11/english/panels/tp/tp_rdp/minutes/rdp20110617.pdf">http://www.legco.gov.hk/yr10-11/english/panels/tp/tp_rdp/minutes/rdp20110617.pdf</a>
6.7.2011	Council Meeting	Professor Hon Patrick LAU Sau-shing raised a question on transportation of explosives required for the construction works of the South Island (East) Line	<a href="http://www.info.gov.hk/gia/general/201107/06/P201107060127.htm">http://www.info.gov.hk/gia/general/201107/06/P201107060127.htm</a>
4.1.2013	Subcommittee on Matters Relating to Railways	MTR Corporation Limited's paper on railway system for South Island Line (East)	CB(1)363/12-13(03)  <a href="http://www.legco.gov.hk/yr12-13/english/panels/tp/tp_rdp/papers/tp_rdp0104cb1-363-3-e.pdf">http://www.legco.gov.hk/yr12-13/english/panels/tp/tp_rdp/papers/tp_rdp0104cb1-363-3-e.pdf</a>
		Minutes	CB(1)522/12-13  <a href="http://www.legco.gov.hk/yr12-13/english/panels/tp/tp_rdp/minutes/rdp20130104.pdf">http://www.legco.gov.hk/yr12-13/english/panels/tp/tp_rdp/minutes/rdp20130104.pdf</a>
5.7.2013	Subcommittee on Matters Relating to Railways	Administration's paper on coordination of public transport services to tie in with the commissioning of West Island Line and South Island Line (East)	CB(1)1421/12-13(05)  <a href="http://www.legco.gov.hk/yr12-13/english/panels/tp/tp_rdp/papers/tp_rdp0705cb1-1421-5-e.pdf">http://www.legco.gov.hk/yr12-13/english/panels/tp/tp_rdp/papers/tp_rdp0705cb1-1421-5-e.pdf</a>
		Minutes	CB(1)534/13-14  <a href="http://www.legco.gov.hk/yr12-13/english/panels/tp/tp_rdp/minutes/rdp20130705.pdf">http://www.legco.gov.hk/yr12-13/english/panels/tp/tp_rdp/minutes/rdp20130705.pdf</a>

Date of meeting	Meeting	Minutes/Paper	LC Paper No.
2.7.2014	Council Meeting	Hon TANG Ka-piu raised a question on facilities and services provided at MTR stations for persons with disabilities	<a href="http://www.info.gov.hk/gia/general/201407/02/P201407021155.htm">http://www.info.gov.hk/gia/general/201407/02/P201407021155.htm</a>
3.12.2014	Council Meeting	Dr Hon LAM Tai-fai raised a question on cost overruns and delay of major infrastructure projects	<a href="http://www.info.gov.hk/gia/general/201412/03/P201412030932.htm">http://www.info.gov.hk/gia/general/201412/03/P201412030932.htm</a>
--	Panel on Transport	MTR Corporation Limited's paper on fares of MTR South Island Line (East)	CB(4)151/16-17(01)  <a href="http://www.legco.gov.hk/yr16-17/english/panels/tp/papers/tpcb4-151-1-e.pdf">http://www.legco.gov.hk/yr16-17/english/panels/tp/papers/tpcb4-151-1-e.pdf</a>

### **Kwun Tong Line Extension**

Date of meeting	Meeting	Minutes/Paper	LC Paper No.
27.3.2008	Subcommittee on Matters Relating to Railways	Legislative Council Brief on Shatin to Central Link and MTR Kwun Tong Line Extension	File Reference: THB(T)CR10/1016/99  <a href="http://www.legco.gov.hk/yr07-08/english/panels/tp/tp_rdp/papers/tp_rdp-thbtcr10101699-e.pdf">http://www.legco.gov.hk/yr07-08/english/panels/tp/tp_rdp/papers/tp_rdp-thbtcr10101699-e.pdf</a>
		Administration's paper on funding application for the design of the Shatin to Central Link	CB(1)1036/07-08(03)  <a href="http://www.legco.gov.hk/yr07-08/english/panels/tp/tp_rdp/papers/tp_rdp0327cb1-1036-3-e.pdf">http://www.legco.gov.hk/yr07-08/english/panels/tp/tp_rdp/papers/tp_rdp0327cb1-1036-3-e.pdf</a>
		Administration's supplementary paper on Shatin to Central Link and MTR Kwun Tong Line Extension	CB(1)1377/07-08(01)  <a href="http://www.legco.gov.hk/yr07-08/english/panels/tp/tp_rdp/papers/tp_rdp0327cb1-1377-1-e.pdf">http://www.legco.gov.hk/yr07-08/english/panels/tp/tp_rdp/papers/tp_rdp0327cb1-1377-1-e.pdf</a>

Date of meeting	Meeting	Minutes/Paper	LC Paper No.
		Minutes	CB(1)1374/07-08  <a href="http://www.legco.gov.hk/yr07-08/english/panels/tp/tp_rdp/minutes/rd080327.pdf">http://www.legco.gov.hk/yr07-08/english/panels/tp/tp_rdp/minutes/rd080327.pdf</a>
17.9.2009	Subcommittee on Matters Relating to Railways	Administration's paper on progress of the Kwun Tong Line Extension	CB(1)2582/08-09(04)  <a href="http://www.legco.gov.hk/yr08-09/english/panels/tp/tp_rdp/papers/tp_rdp0917cb1-2582-4-e.pdf">http://www.legco.gov.hk/yr08-09/english/panels/tp/tp_rdp/papers/tp_rdp0917cb1-2582-4-e.pdf</a>
		Minutes	CB(1)920/09-10  <a href="http://www.legco.gov.hk/yr08-09/english/panels/tp/tp_rdp/minutes/rdp20090917.pdf">http://www.legco.gov.hk/yr08-09/english/panels/tp/tp_rdp/minutes/rdp20090917.pdf</a>
16.12.2009	Council Meeting	Hon Starry LEE Wai-king raised a question on Kwun Tong Line Extension's pedestrian links	<a href="http://www.info.gov.hk/gia/general/200912/16/P200912160142.htm">http://www.info.gov.hk/gia/general/200912/16/P200912160142.htm</a>
16.4.2010	Subcommittee on Matters Relating to Railways	Administration's paper on progress report on the Kwun Tong Line Extension	CB(1)1573/09-10(03)  <a href="http://www.legco.gov.hk/yr09-10/english/panels/tp/tp_rdp/papers/tp_rdp0416cb1-1573-3-e.pdf">http://www.legco.gov.hk/yr09-10/english/panels/tp/tp_rdp/papers/tp_rdp0416cb1-1573-3-e.pdf</a>
		Administration's follow up paper on the Kwun Tong Line Extension	CB(1)2141/09-10(01)  <a href="http://www.legco.gov.hk/yr09-10/english/panels/tp/tp_rdp/papers/tp_rdp0416cb1-2141-1-e.pdf">http://www.legco.gov.hk/yr09-10/english/panels/tp/tp_rdp/papers/tp_rdp0416cb1-2141-1-e.pdf</a>

Date of meeting	Meeting	Minutes/Paper	LC Paper No.
		Minutes	CB(1)2071/09-10  <a href="http://www.legco.gov.hk/yr09-10/english/panels/tp/tp_rdp/minutes/rdp20100416.pdf">http://www.legco.gov.hk/yr09-10/english/panels/tp/tp_rdp/minutes/rdp20100416.pdf</a>
6.7.2010 14.7.2010	Subcommittee on Matters Relating to Railways	Administration's paper on progress report on the Kwun Tong Line Extension	CB(1)2290/09-10(03)  <a href="http://www.legco.gov.hk/yr09-10/english/panels/tp/tp_rdp/papers/tp_rdp0706cb1-2290-3-e.pdf">http://www.legco.gov.hk/yr09-10/english/panels/tp/tp_rdp/papers/tp_rdp0706cb1-2290-3-e.pdf</a>
		Minutes	CB(1)45/10-11  <a href="http://www.legco.gov.hk/yr09-10/english/panels/tp/tp_rdp/minutes/rdp20100706.pdf">http://www.legco.gov.hk/yr09-10/english/panels/tp/tp_rdp/minutes/rdp20100706.pdf</a>  CB(1)47/10-11  <a href="http://www.legco.gov.hk/yr09-10/english/panels/tp/tp_rdp/minutes/rdp20100714.pdf">http://www.legco.gov.hk/yr09-10/english/panels/tp/tp_rdp/minutes/rdp20100714.pdf</a>
6.12.2010 16.12.2010	Subcommittee on Matters Relating to Railways	Legislative Council Brief on Kwun Tong Line Extension — authorization of scheme following receipt of objections	<a href="http://www.legco.gov.hk/yr10-11/english/panels/tp/tp_rdp/papers/tp_rdp1206-thb20101130-e.pdf">http://www.legco.gov.hk/yr10-11/english/panels/tp/tp_rdp/papers/tp_rdp1206-thb20101130-e.pdf</a>
		Administration's paper on the progress report of Kwun Tong Line Extension and funding application for essential public infrastructure works	CB(1)603/10-11(03)  <a href="http://www.legco.gov.hk/yr10-11/english/panels/tp/tp_rdp/papers/tp_rdp1206cb1-603-3-e.pdf">http://www.legco.gov.hk/yr10-11/english/panels/tp/tp_rdp/papers/tp_rdp1206cb1-603-3-e.pdf</a>

Date of meeting	Meeting	Minutes/Paper	LC Paper No.
		Minutes	CB(1)1161/10-11  <a href="http://www.legco.gov.hk/yr10-11/english/panels/tp/tp_rdp/minutes/rdp20101206.pdf">http://www.legco.gov.hk/yr10-11/english/panels/tp/tp_rdp/minutes/rdp20101206.pdf</a>  CB(1)1918/10-11  <a href="http://www.legco.gov.hk/yr10-11/english/panels/tp/tp_rdp/minutes/rdp20101216.pdf">http://www.legco.gov.hk/yr10-11/english/panels/tp/tp_rdp/minutes/rdp20101216.pdf</a>
19.1.2011	Public Works Subcommittee	Kwun Tong Line Extension — essential public infrastructure works	PWSC(2010-11)32  <a href="http://www.legco.gov.hk/yr10-11/english/fc/pwsc/papers/p10-32e.pdf">http://www.legco.gov.hk/yr10-11/english/fc/pwsc/papers/p10-32e.pdf</a>
		Minutes	PWSC39/10-11  <a href="http://www.legco.gov.hk/yr10-11/english/fc/pwsc/minutes/pwsc20110119.pdf">http://www.legco.gov.hk/yr10-11/english/fc/pwsc/minutes/pwsc20110119.pdf</a>
15.4.2011	Finance Committee	Minutes	FC118/10-11  <a href="http://www.legco.gov.hk/yr10-11/english/fc/fc/minutes/fc20110415.pdf">http://www.legco.gov.hk/yr10-11/english/fc/fc/minutes/fc20110415.pdf</a>
17.6.2011	Subcommittee on Matters Relating to Railways	Legislative Council Brief on the Kwun Tong Line Extension funding arrangement	<a href="http://www.legco.gov.hk/yr10-11/english/panels/tp/tp_rdp/papers/tp_rdp-thb201105-e.pdf">http://www.legco.gov.hk/yr10-11/english/panels/tp/tp_rdp/papers/tp_rdp-thb201105-e.pdf</a>

Date of meeting	Meeting	Minutes/Paper	LC Paper No.
		Minutes	CB(1)414/11-12  <a href="http://www.legco.gov.hk/yr10-11/english/panels/tp/tp_rdp/minutes/rdp20110617.pdf">http://www.legco.gov.hk/yr10-11/english/panels/tp/tp_rdp/minutes/rdp20110617.pdf</a>
16.11.2016	Council Meeting	Hon CHAN Chi-chuen raised a question on the impact of the commissioning of the Kwun Tong Line Extension on road-based public transport services	<a href="http://www.info.gov.hk/gia/general/201611/16/P2016111600239.htm">http://www.info.gov.hk/gia/general/201611/16/P2016111600239.htm</a>
--	Panel on Transport	MTR Corporation Limited's paper on fares of MTR Kwun Tong Line Extension	CB(4)1318/15-16(01)  <a href="http://www.legco.gov.hk/yr15-16/english/panels/tp/papers/tpcb4-1318-1-e.pdf">http://www.legco.gov.hk/yr15-16/english/panels/tp/papers/tpcb4-1318-1-e.pdf</a>

### **South Island Line (East) and Kwun Tong Line Extension**

Date of meeting	Meeting	Minutes/Paper	LC Paper No.
13.1.2012	Subcommittee on Matters Relating to Railways	MTR Corporation Limited's paper on the design of next generation of railway stations and update on retrofitting platform screen doors	CB(1)785/11-12(03)  <a href="http://www.legco.gov.hk/yr11-12/english/panels/tp/tp_rdp/papers/tp_rdp0113cb1-785-3-e.pdf">http://www.legco.gov.hk/yr11-12/english/panels/tp/tp_rdp/papers/tp_rdp0113cb1-785-3-e.pdf</a>
		Minutes	CB(1)2461/11-12  <a href="http://www.legco.gov.hk/yr11-12/english/panels/tp/tp_rdp/minutes/rdp20120113.pdf">http://www.legco.gov.hk/yr11-12/english/panels/tp/tp_rdp/minutes/rdp20120113.pdf</a>
25.4.2012	Council Meeting	Hon Paul CHAN Mo-po raised a question on MTR property development	<a href="http://www.info.gov.hk/gia/general/201204/25/P201204250310.htm">http://www.info.gov.hk/gia/general/201204/25/P201204250310.htm</a>

Date of meeting	Meeting	Minutes/Paper	LC Paper No.
22.5.2012	Subcommittee on Matters Relating to Railways	Administration's paper on the environmental measures for new railway projects	CB(1)1832/11-12(01) <a href="http://www.legco.gov.hk/yr11-12/english/panels/tp/tp_rdp/papers/tp_rdp0522cb1-1832-1-e.pdf">http://www.legco.gov.hk/yr11-12/english/panels/tp/tp_rdp/papers/tp_rdp0522cb1-1832-1-e.pdf</a>
		Minutes	CB(1)2542/11-12 <a href="http://www.legco.gov.hk/yr11-12/english/panels/tp/tp_rdp/minutes/rdp20120522.pdf">http://www.legco.gov.hk/yr11-12/english/panels/tp/tp_rdp/minutes/rdp20120522.pdf</a>
8.5.2013	Council Meeting	Hon TANG Ka-piu raised a question on new MTR fares and concessions	<a href="http://www.info.gov.hk/gia/general/201305/08/P201305080200.htm">http://www.info.gov.hk/gia/general/201305/08/P201305080200.htm</a>
17.6.2014	Subcommittee on Matters Relating to Railways	Administration's paper on the progress update of the construction of the West Island Line, South Island Line (East) and Kwun Tong Line Extension	CB(1)1604/13-14(01) <a href="http://www.legco.gov.hk/yr13-14/english/panels/tp/tp_rdp/papers/tp_rdp0617cb1-1604-1-e.pdf">http://www.legco.gov.hk/yr13-14/english/panels/tp/tp_rdp/papers/tp_rdp0617cb1-1604-1-e.pdf</a>
		Minutes	CB(1)38/14-15 <a href="http://www.legco.gov.hk/yr13-14/english/panels/tp/tp_rdp/minutes/rdp20140617.pdf">http://www.legco.gov.hk/yr13-14/english/panels/tp/tp_rdp/minutes/rdp20140617.pdf</a>
4.7.2014	Subcommittee on Matters Relating to Railways	Administration's supplementary information paper on the number of construction personnel short for each of the five new railway projects under construction (follow-up paper)	CB(4)307/14-15(01) <a href="http://www.legco.gov.hk/yr13-14/english/panels/tp/tp_rdp/papers/tp_rdp0704cb4-307-1-e.pdf">http://www.legco.gov.hk/yr13-14/english/panels/tp/tp_rdp/papers/tp_rdp0704cb4-307-1-e.pdf</a>

Date of meeting	Meeting	Minutes/Paper	LC Paper No.
24.11.2014	Subcommittee on Matters Relating to Railways	Administration's paper on progress update of the Shatin to Central Link, South Island Line (East) and Kwun Tong Line Extension	CB(1)260/14-15(03) <a href="http://www.legco.gov.hk/yr14-15/english/panels/tp/tp_rdp/papers/tp_rdp20141124cb1-260-3-e.pdf">http://www.legco.gov.hk/yr14-15/english/panels/tp/tp_rdp/papers/tp_rdp20141124cb1-260-3-e.pdf</a>
		Minutes	CB(4)491/14-15 <a href="http://www.legco.gov.hk/yr14-15/english/panels/tp/tp_rdp/minutes/rdp20141124.pdf">http://www.legco.gov.hk/yr14-15/english/panels/tp/tp_rdp/minutes/rdp20141124.pdf</a>
2.1.2015	Subcommittee on Matters Relating to Railways	Administration's paper on progress update of the South Island Line (East) and Kwun Tong Line Extension	CB(4)287/14-15(03) <a href="http://www.legco.gov.hk/yr14-15/english/panels/tp/tp_rdp/papers/tp_rdp20150102cb4-287-3-e.pdf">http://www.legco.gov.hk/yr14-15/english/panels/tp/tp_rdp/papers/tp_rdp20150102cb4-287-3-e.pdf</a>
		Minutes	CB(4)623/14-15 <a href="http://www.legco.gov.hk/yr14-15/english/panels/tp/tp_rdp/minutes/rdp20150102.pdf">http://www.legco.gov.hk/yr14-15/english/panels/tp/tp_rdp/minutes/rdp20150102.pdf</a>
19.5.2015	Subcommittee on Matters Relating to Railways	Administration's paper on the progress update of the construction of the West Island Line, South Island Line (East) and Kwun Tong Line Extension	CB(4)954/14-15(05) <a href="http://www.legco.gov.hk/yr14-15/english/panels/tp/tp_rdp/papers/tp_rdp20150519cb4-954-5-e.pdf">http://www.legco.gov.hk/yr14-15/english/panels/tp/tp_rdp/papers/tp_rdp20150519cb4-954-5-e.pdf</a>



Date of meeting	Meeting	Minutes/Paper	LC Paper No.
		Minutes	CB(4)62/15-16  <a href="http://www.legco.gov.hk/yr14-15/english/panels/tp/tp_rdp/minutes/rdp20150519.pdf">http://www.legco.gov.hk/yr14-15/english/panels/tp/tp_rdp/minutes/rdp20150519.pdf</a>
14.12.2015	Subcommittee on Matters Relating to Railways	Administration's paper on the progress update of the construction of the West Island Line, South Island Line (East) and Kwun Tong Line Extension	CB(4)298/15-16(02)  <a href="http://www.legco.gov.hk/yr15-16/english/panels/tp/tp_rdp/papers/tp_rdp4-298-2-e.pdf">http://www.legco.gov.hk/yr15-16/english/panels/tp/tp_rdp/papers/tp_rdp4-298-2-e.pdf</a>
		Minutes	CB(4)878/15-16  <a href="http://www.legco.gov.hk/yr15-16/english/panels/tp/tp_rdp/minutes/rdp20151214.pdf">http://www.legco.gov.hk/yr15-16/english/panels/tp/tp_rdp/minutes/rdp20151214.pdf</a>
3.2.2016	Council Meeting	Hon Mrs Regina IP LAU Suk-yea raised a question on the MTR Corporation Limited railway businesses	<a href="http://www.info.gov.hk/gia/general/201602/03/P201602030607.htm">http://www.info.gov.hk/gia/general/201602/03/P201602030607.htm</a>
22.2.2016	Subcommittee on Matters Relating to Railways	Administration's paper on the progress update of the construction of the West Island Line, South Island Line (East) and Kwun Tong Line Extension	CB(4)610/15-16(03)  <a href="http://www.legco.gov.hk/yr15-16/english/panels/tp/tp_rdp/papers/tp_rdp20160222cb4-610-3-e.pdf">http://www.legco.gov.hk/yr15-16/english/panels/tp/tp_rdp/papers/tp_rdp20160222cb4-610-3-e.pdf</a>
		Administration's supplementary information paper on the additional toilet facilities provided at the new concourses at the stations along the Shatin to Central Link and the original and latest estimates of the construction costs of the various on-going railway projects (Follow-up paper)	CB(4)960/15-16(01)  <a href="http://www.legco.gov.hk/yr15-16/english/panels/tp/tp_rdp/papers/tp_rdp20160222cb4-960-1-e.pdf">http://www.legco.gov.hk/yr15-16/english/panels/tp/tp_rdp/papers/tp_rdp20160222cb4-960-1-e.pdf</a>

Date of meeting	Meeting	Minutes/Paper	LC Paper No.
		Minutes	CB(4)983/15-16  <a href="http://www.legco.gov.hk/yr15-16/english/panels/tp/tp_rdp/minutes/rdp20160222.pdf">http://www.legco.gov.hk/yr15-16/english/panels/tp/tp_rdp/minutes/rdp20160222.pdf</a>
7.4.2016	Finance Committee (Special meeting)	Replies to initial written questions raised by Finance Committee members in examining the Estimates of Expenditure 2016-2017 (Session No.: 14) (Questions Serial Nos. 0658, 2032, 3603, 4569, 4604, 5539, 5713, 6318 and 7274)	<a href="http://www.legco.gov.hk/yr15-16/english/fc/fc/w_q/thb-t-e.pdf">http://www.legco.gov.hk/yr15-16/english/fc/fc/w_q/thb-t-e.pdf</a>
27.6.2016	Subcommittee on Matters Relating to Railways	Administration's paper on the progress update of the construction of the West Island Line, South Island Line (East) and Kwun Tong Line Extension (as at 31 March 2016)	CB(4)1136/15-16(01)  <a href="http://www.legco.gov.hk/yr15-16/english/panels/tp/tp_rdp/papers/tp_rdp20160627cb4-1136-1-e.pdf">http://www.legco.gov.hk/yr15-16/english/panels/tp/tp_rdp/papers/tp_rdp20160627cb4-1136-1-e.pdf</a>
		Administration's supplementary information paper on the progress update of the construction of the Kwun Tong Line Extension and South Island Line (East) (as at 30 June 2016) (Follow-up paper)	CB(4)1286/15-16(01)  <a href="http://www.legco.gov.hk/yr15-16/english/panels/tp/tp_rdp/papers/tp_rdp20160627cb4-1286-1-e.pdf">http://www.legco.gov.hk/yr15-16/english/panels/tp/tp_rdp/papers/tp_rdp20160627cb4-1286-1-e.pdf</a>
		Minutes	CB(4)1313/15-16  <a href="http://www.legco.gov.hk/yr15-16/english/panels/tp/tp_rdp/minutes/rdp20160627.pdf">http://www.legco.gov.hk/yr15-16/english/panels/tp/tp_rdp/minutes/rdp20160627.pdf</a>

Date of meeting	Meeting	Minutes/Paper	LC Paper No.
--	Subcommittee on Matters Relating to Railways	Administration's paper on the progress update of the construction of the South Island Line (East) and Kwun Tong Line Extension (as at 30 June 2016)	CB(4)1317/15-16(01) <a href="http://www.legco.gov.hk/yr15-16/english/panels/tp/tp_rdp/papers/tp_rdp4-1317-1-e.pdf">http://www.legco.gov.hk/yr15-16/english/panels/tp/tp_rdp/papers/tp_rdp4-1317-1-e.pdf</a>
2.11.2016	Council Meeting	Hon Frankie YICK Chi-ming raised a question on public transport service arrangements for commissioning of new railway lines	<a href="http://www.info.gov.hk/gia/general/201611/02/P2016110200687.htm">http://www.info.gov.hk/gia/general/201611/02/P2016110200687.htm</a>
--	Subcommittee on Matters Relating to Railways	Administration's paper on the progress update of the construction of the South Island Line (East) and Kwun Tong Line Extension (as at 30 September 2016)	CB(4)152/16-17(01) <a href="http://www.legco.gov.hk/yr16-17/english/panels/tp/tp_rdp/papers/tp_rdp4-152-1-e.pdf">http://www.legco.gov.hk/yr16-17/english/panels/tp/tp_rdp/papers/tp_rdp4-152-1-e.pdf</a>