

# 東區走廊下之行人板道研究 最新方案

## Latest Scheme for Proposed Boardwalk underneath the Island Eastern Corridor

# 擬議板道

## PROPOSED BOARDWALK

- 2019 - 20年度的財政預算案中預留了60億元優化海濱，以打造一個更暢達、連貫及全民共享的海濱

2019-20 Budget has earmarked \$6 billion for harbourfront enhancement to make our harbourfront more accessible, connected and enjoyable

- 擬議板道約2公里長，是一塊重要的拼圖，發揮連貫中區和西灣河共九公里長的海濱的重要功能

The 2-km Boardwalk is a key piece of the jigsaw puzzle providing a continuous waterfront promenade of some 9 km from the Central to Sai Wan Ho

# 研究進度

## PROGRESS OF THE STUDY

- 土木工程拓展署於2015年展開《東區走廊下之行人板道研究》，制定擬議板道的走線  
CEDD commissioned the “Boardwalk underneath IEC - Investigation” study in 2015 to formulate the alignment of the proposed Boardwalk
- 於2016年及2017年進行了兩輪社區參與  
A two-stage community engagement exercise was conducted in 2016 and 2017

# 於兩階段社區參與所得意見

## IEWS COLLECTED FROM 2-STAGE COMMUNITY ENGAGEMENT

- 公眾普遍支持盡快興建10米闊行人板道  
The public in general supported the proposed Boardwalk with a general width of 10 m throughout and urged for early implementation of the proposed Boardwalk
- 同時支持沿板道增加連接點及設施  
The public supported the provision of more access points and facilities

# 於兩階段社區參與所得意見

## IEWS COLLECTED FROM 2-STAGE COMMUNITY ENGAGEMENT

- 有持份者要求盡量利用東區走廊下的空間，以減少對維港的影響

Some stakeholders requested fully utilizing the space underneath the IEC structures so as to minimize the impact to the Victoria Harbour

# 最新方案主要特點

## LATEST SCHEME KEY FEATURES

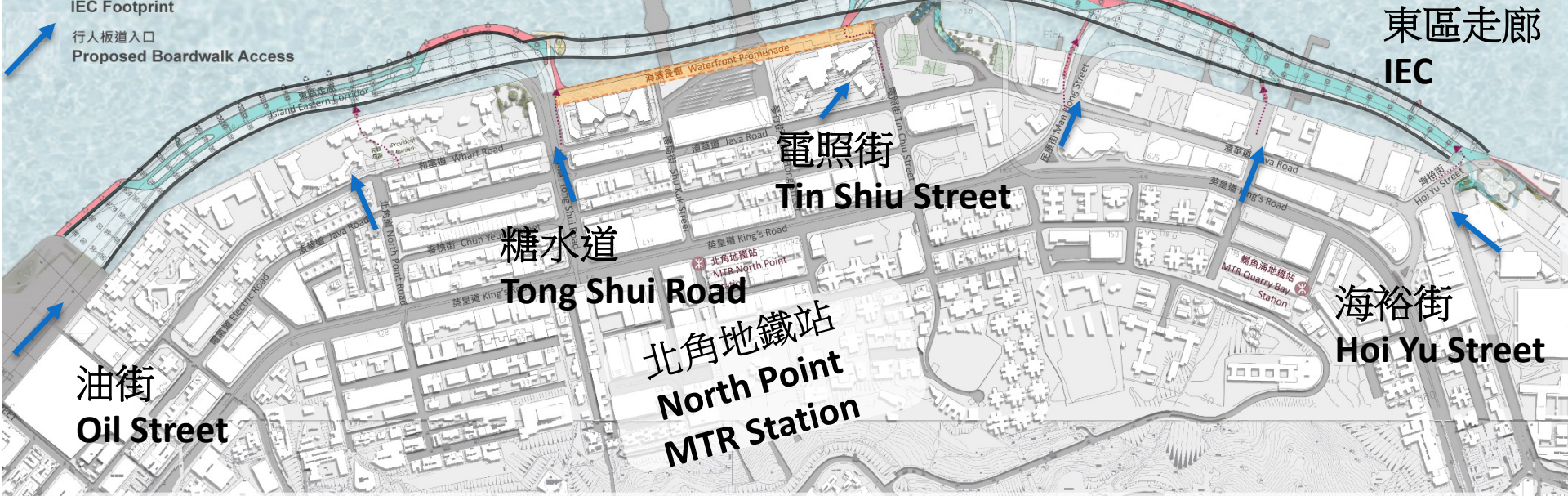
- 板道提供最大的空間  
Maximising the space of the proposed Boardwalk
- 充分利用東區走廊結構的遮蔭  
Fully utilizing the shading of the IEC
- 加強內陸聯繫  
Enhancing connectivity with the hinterland
- 加設多元設施迎合不同需要  
Meeting diversified needs

圖例 LEGEND

- 東區走廊結構下之行人板道  
Boardwalk underneath IEC Footprint
- 東區走廊結構以外之行人板道  
Boardwalk outside IEC Footprint
- 行人板道入口  
Proposed Boardwalk Access

# 《第三階段社區參與》最新方案

## LATEST SCHEME UNDER STAGE 3 COMMUNITY ENGAGEMENT



- 擬議板道約為1.7公里長，最少10米闊  
The length of the proposed boardwalk is about 1.7km, with minimum width of 10m
- 板道之間約400米的海濱，會由一條位於前北角邨、闊20米的海濱長廊連接  
Connected by a 400 m long and 20 m wide promenade fronting the Ex-North Point Estate site
- 約1.3公里建於東區走廊下，餘下約400米建於東區走廊以外  
About 1.3km would be put underneath IEC structures while the remaining 400m would be built outside the footprint of the IEC
- 提供7個連接點  
Provision of 7 access points

# 最新方案 – 西段

## Latest Scheme – Western Portion

圖例

Legend:

於東區走廊橋外

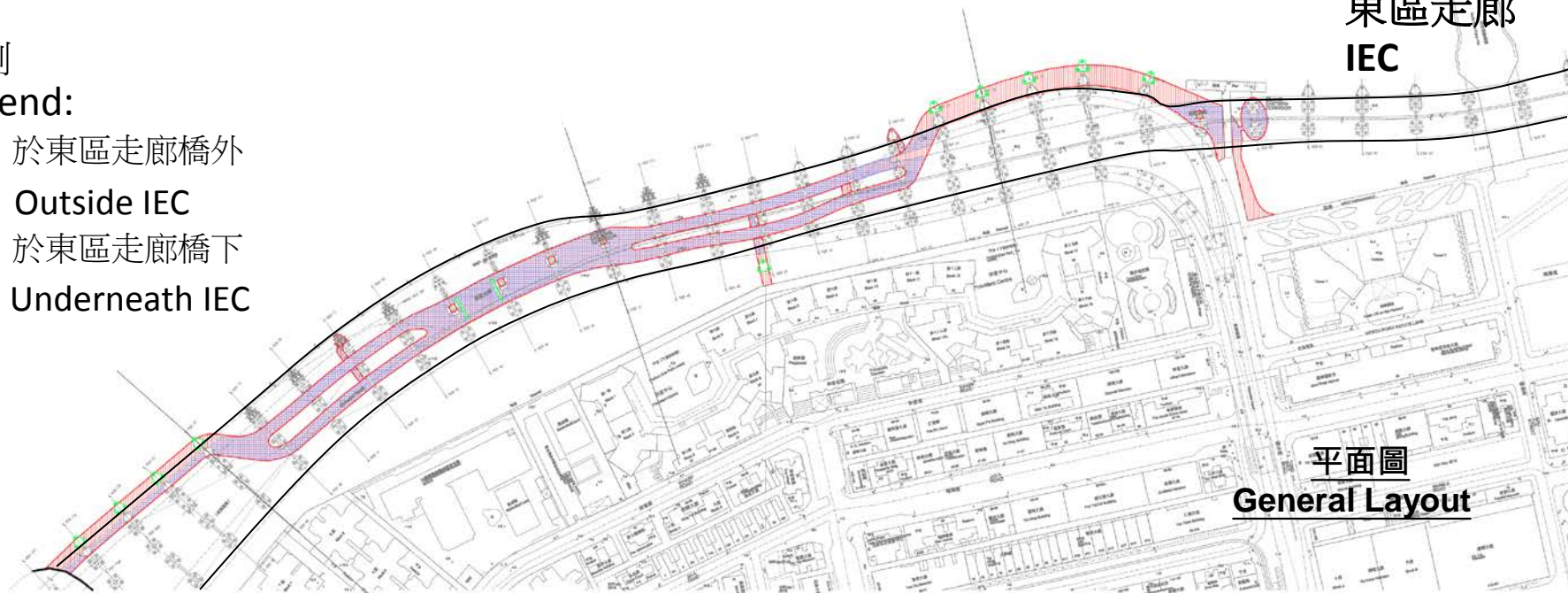
Outside IEC

於東區走廊橋下

Underneath IEC

東區走廊  
IEC

平面圖  
General Layout





# 最新方案 – 東段 Latest Scheme – Eastern Portion

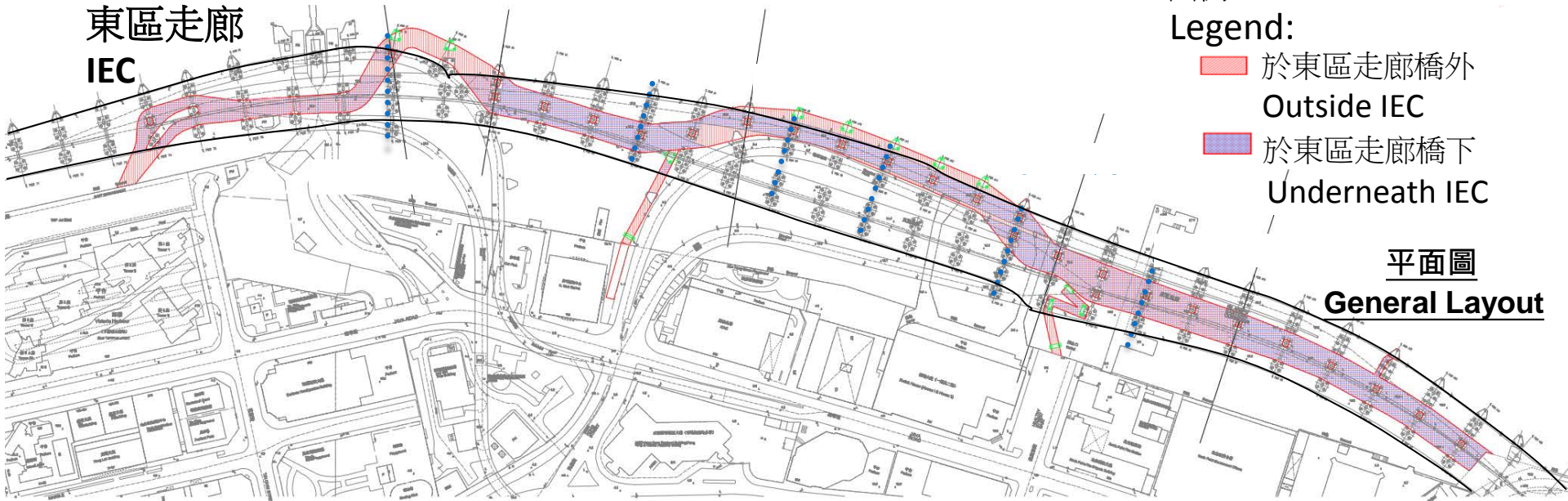
東區走廊  
IEC

圖例

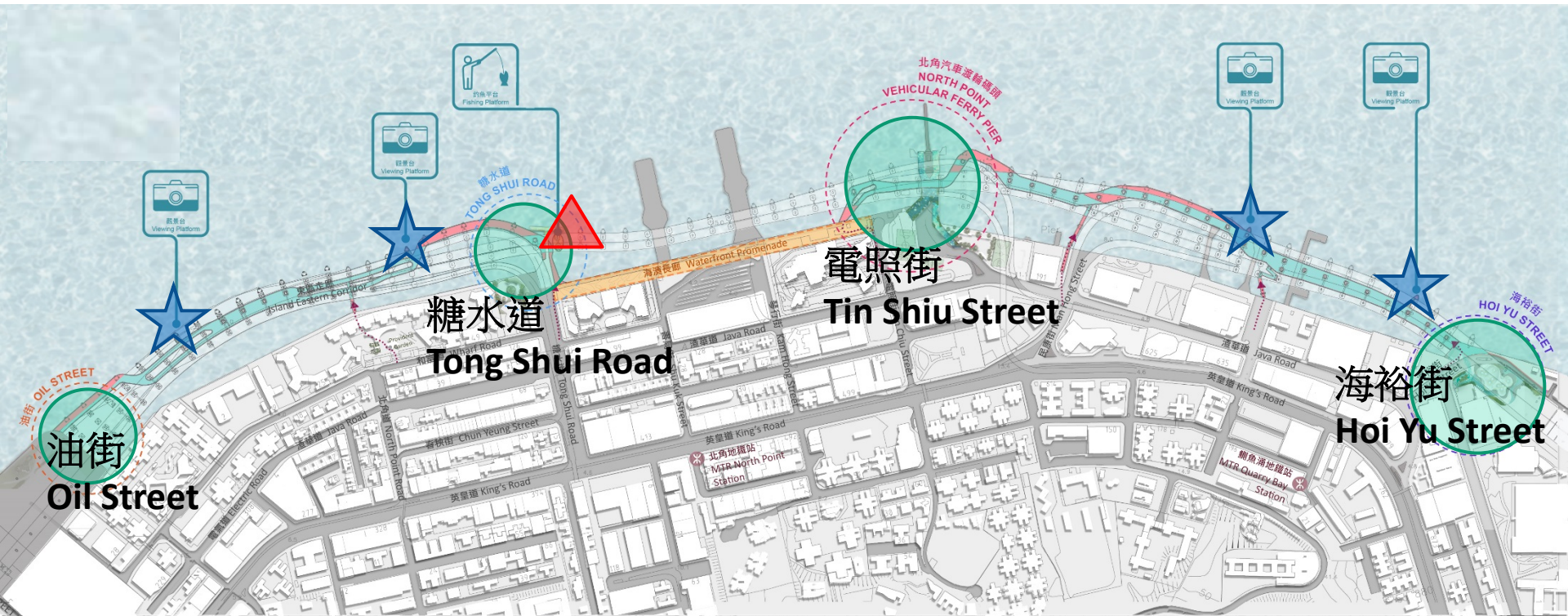
Legend:

- 於東區走廊橋外  
Outside IEC
- 於東區走廊橋下  
Underneath IEC

平面圖  
General Layout



# 《第三階段社區參與》最新方案 LATEST SCHEME UNDER STAGE 3 COMMUNITY ENGAGEMENT



- 建議提供4個活動點、4個觀景台及1個釣魚平台  
Proposed provision of 4 activity nodes, 4 viewing decks and 1 fishing platform

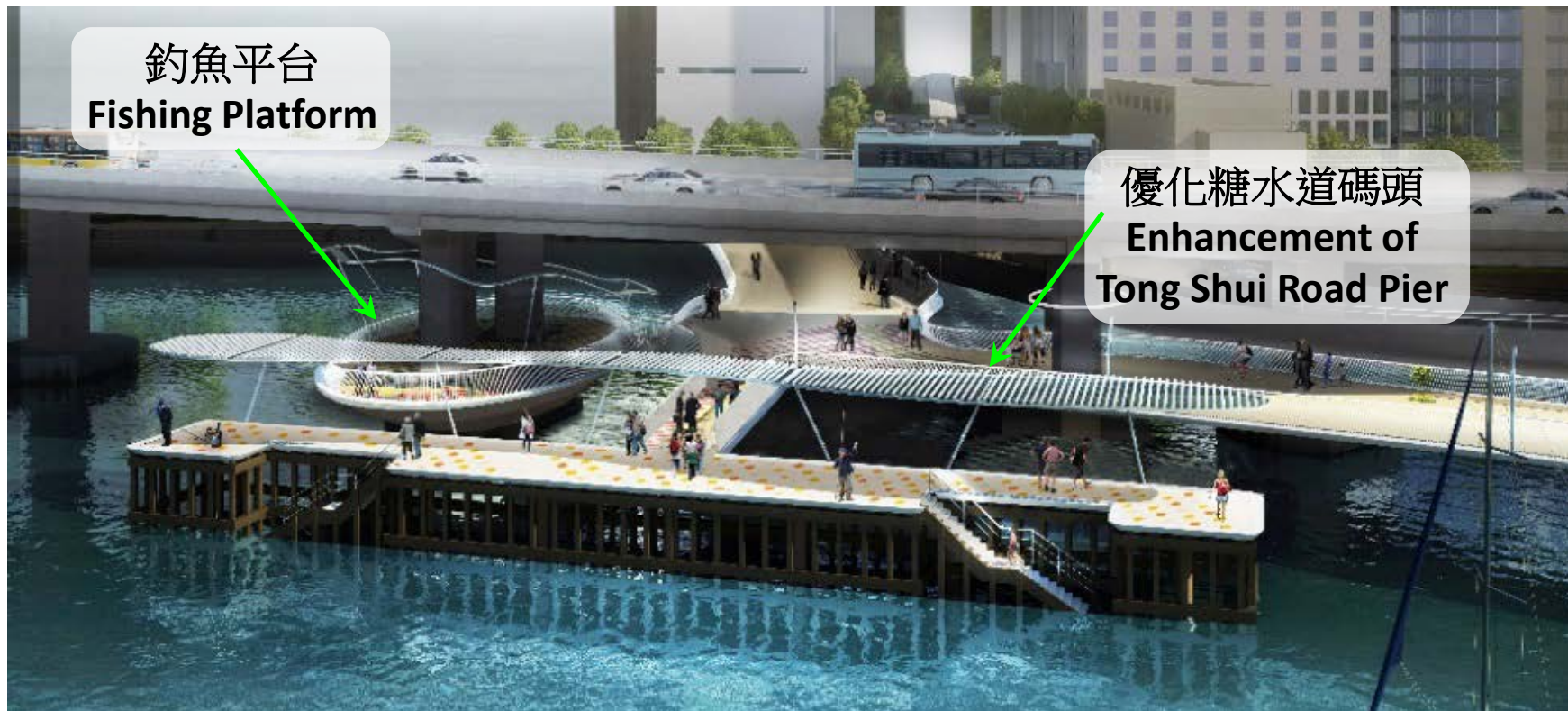
# 最新方案示意圖 Photomontage of Latest Scheme

觀景台  
Viewing Platform



近和富中心  
Near Provident Centre

# 最新方案示意圖 Photomontage of Latest Scheme



糖水道活動點  
Activity Node at Tong Shui Road

# 最新方案示意圖 Photomontage of Latest Scheme



海裕街活動點  
Activity Node at Hoi Yu Street

# 《第三階段社區參與》

## STAGE 3 COMMUNITY ENGAGEMENT

- 土木工程拓展署於2019年2月開展了為期兩個月的《第三階段社區參與》

CEDD launched the 2-month Stage 3 Community Engagement in February 2019

# 《第三階段社區參與》所得意見

## STAGE 3 COMMUNITY ENGAGEMENT COLLECTED VIEWS

- 公眾及持份者普遍支持最新方案  
The public and stakeholders in general supported the Latest Scheme
- 詳細設計須考慮緩解措施減少對海洋生態的影響和板道如何抵禦惡劣天氣  
Detailed design should consider mitigation against possible impact on marine ecology and resilience against adverse weather
- 就擬議板道的設計、物料、設施及將來管理的建議  
Design and materials to be used for the proposed Boardwalk and its resilience against adverse weather

## 未來路向 WAY FORWARD

里程碑 Milestone	年份 Year
開展詳細設計 Commencement of Detailed Design	2019年尾 End 2019
刊憲程序 Gazette Procedures	2020
撥款申請 Funding Applications	2021年下半年 Second half of 2021
開展建造工程 Commencement of Construction Works	2021年年內 Within 2021
完成建造工程 Completion of Construction Works	2025