

民政事務總署

香港灣仔軒尼詩道一百三十號
修頓中心二十九至三十一樓

**HOME AFFAIRS DEPARTMENT**

29th to 31st Floors, Southorn Centre,
130 Hennessy Road, Wan Chai,
Hong Kong.

本署檔號 Our Ref.: S/F(10) in HAD HQ CT/16-100/10

來函檔號 Your Ref.:

電話 Tel.: 2835 1005

傳真 Fax.: 2834 5103

24 January 2019

Ms Anita SIT
Clerk to Finance Committee
Legislative Council Secretariat
Legislative Council Complex
1 Legislative Council Road
Central, Hong Kong

Dear Ms SIT,

**Follow-up to Meeting of Finance Committee on 30 November 2018
FCR(2018-19)59/PWSC(2018-19)28**

At the Finance Committee meeting held on 30 November 2018, Members requested the Government to provide supplementary information. The consolidated reply, in consultation with the departments concerned, is as follows:

- (a) 458RO – Signature Project Scheme (Kwun Tong District) – Construction of Music Fountains at Kwun Tong Promenade (“the Music Fountains Project”)
 - (i) The entire consultation document and result of the consultation conducted by the District Office in 2015 (*Requested by Dr Hon Fernando CHEUNG Chiu-hung; 15:17:50*)

To gauge public views on the specific design of the Music Fountains Project, the Kwun Tong District Office (“KTDO”) conducted a survey in the vicinity of Kwun Tong Promenade between 20 May and 10 June 2015, interviewing over 800 Promenade users for their views on the addition of “water-friendly features” at the Promenade, with the concept plan of the fountains shown to them during the interviews. The questionnaire and result of the survey are at **Annex 1 and Annex 2** respectively.

Overall speaking, more than half of the interviewees supported adding water-friendly features, such as dry fountains, jumping jets and performance fountains, etc., at the Promenade. When asked about the size of the proposed fountains, around half of the interviewees considered the scale as appropriate and

around one quarter of them expressed no comment. The Kwun Tong District Council had endorsed the implementation of the Music Fountains Project in 2013 already. KTDO's survey in 2015 aimed to collect public views on the specific design of the fountains **for internal reference** and not for a decision to implement the Music Fountains Project.

- (ii) The estimated expenditure involved and source of funding for conducting water tests for the music fountains (including the dry fountains) regularly to prevent the transmission of diseases (in particular legionnaires' disease) by fountain water (*Requested by Hon WU Chi-wai; 16:30:12*)

Recirculatory filtration and disinfection facilities will be installed in the music fountains. In order to prevent the transmission of legionnaires' disease by fountain water, the precautions stipulated in the Code of Practice for Prevention of Legionnaires' Disease published by the Prevention of Legionnaires' Disease Committee, Hong Kong, including those on design, operation, and repair and maintenance, will be observed in the works concerned. Upon completion of the construction works of the music fountains, the Architectural Services Department will conduct water tests to ensure that water quality satisfies the hygiene requirements, using as reference the hygiene standards for swimming pool water quality. The Leisure and Cultural Services Department ("LCSD") and the departments concerned will examine the repair and maintenance arrangements for the disinfection facilities of the fountains, and assess whether it is necessary to conduct water tests regularly for the water of the music fountains to prevent the transmission of diseases (in particular legionnaires' disease) by fountain water. The estimated expenditure for the water tests concerned is not available at this stage. In general, if water tests for fountain water are to be conducted, the expenditure would be absorbed by the recurrent expenditure of the project.

- (b) 68RE – Signature Project Scheme (Wan Chai District) – Construction of Moreton Terrace Activities Centre (the "Moreton Terrace Activities Centre Project")
 - (i) The statistics on the current utilisation rates of the handball court of Victoria Park and the volleyball courts of Moreton Terrace Temporary Playground by time slot in a week (*Requested by Dr Hon Fernando CHEUNG Chiu-hung; 16:55:41*); and
 - (ii) the utilisation rates of the volleyball courts and soccer pitch of Moreton Terrace Temporary Playground over the past five years (*Requested by Hon Kenneth LEUNG; 17:04:33*)

The volleyball courts and soccer pitch of Moreton Terrace Temporary Playground are free venues, which if not booked, are open for public use on the

spot. LCSD only maintains their booking rates. The booking rates of the facilities concerned over the past five years are set out below:

Facilities	Booking rates (%)				
	2013-14	2014-15	2015-16	2016-17	2017-18
Moreton Terrace Temporary Playground					
• Volleyball courts	28%	26%	25%	25%	27%
• Soccer pitch	74%	66%	66%	62%	69%

In response to Members' request for information, LCSD deployed staff to conduct survey on the utilisation of the volleyball courts of Moreton Terrace Temporary Playground and the handball-cum-volleyball courts of Victoria Park from 7:00 a.m. to 11:00 p.m. daily during 6 December and 12 December 2018. The statistical records are set out below:

Facilities	Utilisation rates (%) ¹		
	Peak hours ²	Non-peak hours ³	Average utilisation rate
Volleyball courts of Moreton Terrace Temporary Playground	52%	5%	29%
Handball-cum-volleyball courts of Victoria Park			
• Handball court	58%	7%	33%
• Volleyball courts	2%	2%	2%

(iii) The timetable for public consultation on the provision of a new outdoor volleyball court at Ka Ning Path Garden (*Requested by Hon Kenneth LEUNG; 17:04:33*)

The Government is undertaking a preliminary design study on the proposed construction of a new outdoor volleyball court at Ka Ning Path Garden, and upon its completion, will submit the preliminary design to the Wan Chai District Council ("WCDC") for discussion. The specific date of submission is not available for the time being. Upon WCDC's endorsement, the Government will conduct a feasibility study for the works of the volleyball court and the result will be submitted to WCDC for discussion. After ensuring the feasibility of the project and obtaining WCDC's endorsement, the Government will proceed with

¹ The average utilisation rate takes into account the utilisation of the facilities with advance booking and on the spot.

² Peak hours refer to 6:00 p.m. to 11:00 p.m. from Monday to Friday, and any time on Saturday, Sunday and public holidays.

³ Non-peak hours refer to 7:00 a.m. to 6:00 p.m. from Monday to Friday.

public consultation for the proposed project to gauge the views of the stakeholders in the vicinity of Ka Ning Path Garden, including schools and residents. The opinions received will be consolidated for WCDC's consideration and decision on whether to construct a new outdoor volleyball court at Ka Ning Path Garden.

Yours sincerely,

A handwritten signature in black ink, appearing to read 'Eugenia', written in a cursive style.

(Ms Eugenia CHUNG)
for Director of Home Affairs

c.c. FSTB (Attn.: PEO(G) and AS(Tsy)(W)1)

統計調查

1.	是否居於觀塘區? Do you live in Kwun Tong district?		
	是 (Yes)		否 (No)
2.	性別 (Sex):	男 (Male)	女 (Female)
3.	年齡 (Age):	(i)	14 及以下 (& below)
		(ii)	15 - 24
		(iii)	25 - 44
		(iv)	45 - 64
		(v)	65 及以上 (& above)
4.	曾到海濱花園次數 No. of visits to Kwun Tong Promenade before:		
	(i)	0	
	(ii)	1 - 5	
	(iii)	6 - 10	
	(iv)	11 及以上 (& above)	
5.	一同前來海濱花園之人數 No. of companion(s) in this visit:		
	(i)	自己 Self only	
	(ii)	朋友 Friends	
	(iii)	家人 Family	
	(iv)	同事/ 同學 Peers	
	(v)	其他 others	
6.	是次前來海濱花園之目的 Objective of this visit [可選多項 Can select more than one choice]		
	(i)	運動,例如: 慢步/跑步/健身等 Sports: Jogging/ Running/ Fitness, etc	
	(ii)	休閒,例如: 閒坐/賞景/看書/聊天等 Leisure: Resting/ Viewing/ Reading books/ Chatting, etc	
	(iii)	文藝,例如: 彈奏音樂/ 話劇表演/ 跳舞等 Arts & Culture: Playing music/ Drama/ Dancing, etc	
	(iv)	家庭樂 Family fun	
	(v)	攝影 Photo taking	
	(vi)	其他 others	

7.	你會否希望海濱花園之設施種類更多元化? Would you like more varieties in the facilities of KT Promenade?	
	(i)	希望 Yes
	(ii)	不希望 No
	(iii)	無意見 No comment
8.	(展示噴泉概念圖) 你是否支持加設親水設施如嬉水噴泉/跳射噴泉/花式噴水池等? (Show concept design drawing) Do you support the idea of adding water friendly features such as dry fountains / jumping jets/ performance fountains, etc?):	
	(i)	支持 Support
	(ii)	不支持 Not support [原因為何? Reason?]
	(iii)	無意見 No comment
9.	如加設親水設施的大小與一個半籃球場相若，你有何意見? (What do you think if the additional water friendly features are of the size of about one and a half basketball courts?)	
	(i)	太小 Too small
	(ii)	適中 Just fit
	(iii)	太大 Too big
	(iv)	無意見 No comment

多謝寶貴意見

Thank you

- 完 End -

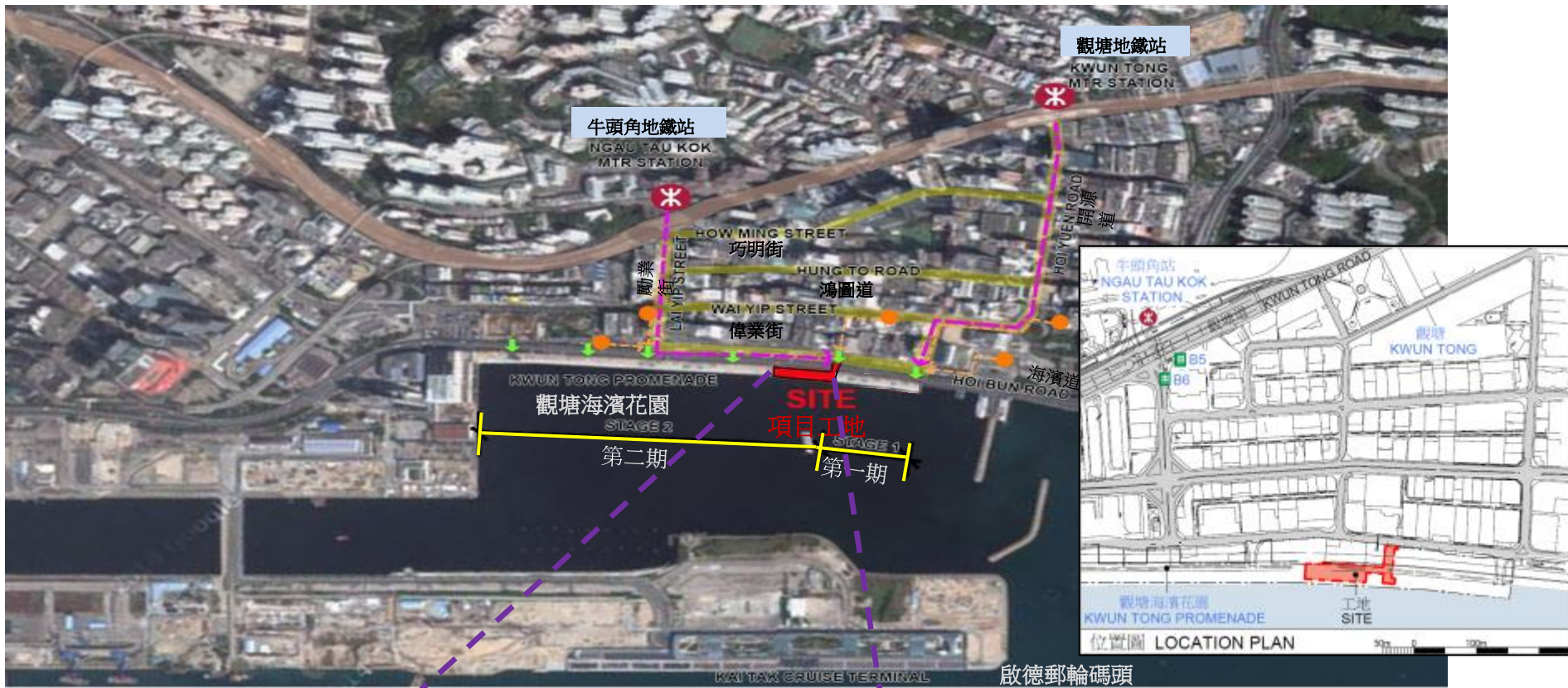
日期 / 時間: _____ 星期() _____ 上午 / 下午

地點: 海濱一期 / 海濱二期 / 反轉天橋底一號場

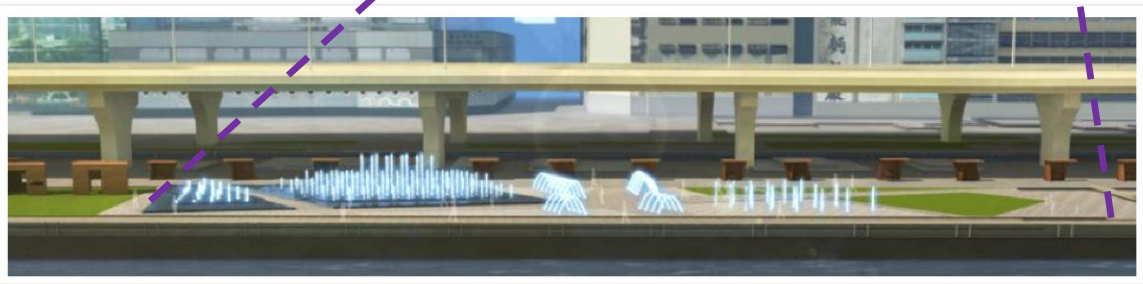
天氣: 晴天 / 炎熱 / 陰天 / 雨天

觀塘海濱親水設施 Water friendly features at Kwun Tong Promenade

位置圖 Location Plan



觀塘海濱花園全長逾900米



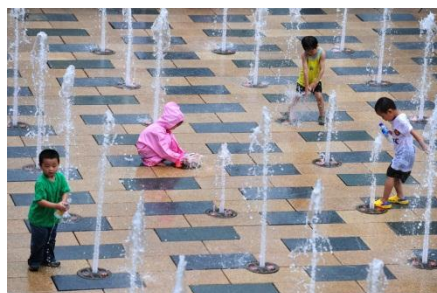
親水設施(包括表演噴水池、跳射噴泉及嬉水噴泉)的大小與一個半籃球場相若，佔觀塘海濱花園整體之2%左右。

觀塘海濱親水設施 Water friendly features at Kwun Tong Promenade

(圖像為意念初稿 Conceptual images shown for illustration only)



除表演噴泉外，親水設施還包括跳射噴泉及嬉水噴泉。



問卷調查結果

收到問卷總數目: 837 份

1.	是否居於觀塘區? Do you live in Kwun Tong District?		
	是 (Yes)	440	否 (No) 397
2.	性別 (Sex):	男 (Male) 477	女 (Female) 360
3.	年齡 (Age):	(i)	14 及以下 (& below) 14
		(ii)	15 - 24 185
		(iii)	25 - 44 366
		(iv)	45 - 64 191
		(v)	65 及以上 (& above) 76
		(vi)	不願透露 (Do not disclose) 5
4.	曾到海濱花園次數 No. of visits to Kwun Tong Promenade before:		
	(i)	0 62	
	(ii)	1 - 5 382	
	(iii)	6 - 10 117	
	(iv)	11 及以上 (& above) 276	
5.	一同前來海濱花園之人數 No. of companion(s) in this visit:		
	(i)	自己 Self only 265	
	(ii)	朋友 Friends 294	
	(iii)	家人 Family 278	
	(iv)	同事/ 同學 Peers 18	
	(v)	其他 others 4	
6.	是次前來海濱花園之目的 Objective of this visit [可選多項 Can select more than one choice]		
	(i)	運動,例如: 慢步/跑步/健身等 Sports: Jogging/ Running/ Fitness, etc	160
	(ii)	休閒,例如: 閒坐/賞景/看書/聊天等 Leisure: Resting/ Viewing/ Reading books/ Chatting, etc	565
	(iii)	文藝,例如: 彈奏音樂/ 話劇表演/ 跳舞等	16

	Arts & Culture: Playing music/ Drama/ Dancing, etc	
	(iv) 家庭樂 Family fun	149
	(v) 攝影 Photo taking	80
	(vi) 其他 others	67
7.	<p>你會否希望海濱花園之設施種類更多元化? Would you like more varieties in the facilities of KT Promenade?</p>	
	(i) 希望 Yes	557
	(ii) 不希望 No	175
	(iii) 無意見 No comment	105
8.	<p>(展示噴泉概念圖) 你是否支持加設親水設施如嬉水噴泉/跳射噴泉/花式噴水池等? (Show concept design drawing) Do you support the idea of adding water friendly features such as dry fountains / jumping jets/ performance fountains, etc?):</p>	
	(i) 支持 Support	431
	(ii) 不支持 Not support	324
	(iii) 無意見 No comment	82
9.	<p>如加設親水設施的大小與一個半籃球場相若，你有何意見? (What do you think if the additional water friendly features are of the size of about one and a half basketball courts?)</p>	
	(i) 太小 Too small	46
	(ii) 適中 Just fit	381
	(iii) 太大 Too big	168
	(iv) 無意見 No comment	187