

For information

Legislative Council Panel on Education

Detailed Design of Hostel Projects Funded under the Hostel Development Fund

Purpose

This information paper serves to provide Members with information on the detailed design of four hostel projects funded under the Hostel Development Fund (HDF).

Background

2. The Finance Committee (FC) of the Legislative Council (LegCo) approved at its meeting on 7 July 2018 a one-off grant of \$10,303.7 million for the setting-up of the HDF for six University Grants Committee (UGC)-funded universities with a shortfall in hostel places to expedite the development of student hostels. At the meeting, Members requested and the Government agreed to provide relevant information to the LegCo when the detailed design of the hostel projects is completed by the universities concerned. The Government will also submit an annual progress report to the LegCo in mid-2019.

3. According to the Master Hostel Development Plans submitted by the universities, a total of 15 hostel projects providing 13 473 hostel places will be carried out by the universities concerned. The Government has disbursed the capital grants in full to the universities. Among the 15 hostel projects funded by the HDF, the detailed design of the following four projects has been completed –

- (a) Hostel Complex at 30 Renfrew Road, Kowloon Tong (the Hong Kong Baptist University);
- (b) 300-place Student Hostel at New Asia Campus (The Chinese University of Hong Kong);
- (c) Student Residence at Mui Fong Street (the University of Hong Kong); and
- (d) Student Residence at Wong Chuk Hang Site (the University of Hong Kong).

4. The detailed design of the four hostel projects are at Enclosures 1 to 4 respectively for Members' information.

Education Bureau
University Grants Committee Secretariat
May 2019

Hostel Complex at 30 Renfrew Road, Kowloon Tong

Hong Kong Baptist University

The project site is located at 30 Renfrew Road, Kowloon Tong. The proposed scope of works includes the construction of a multi-storey student hostel complex integrated with an academic space portion of 5 000 square metres (m²) in net operational floor area (NOFA)¹, a covered footbridge and a covered walkway connecting with the existing buildings on the Baptist University Road Campus. The academic space portion will be funded by the University's private sources of funding. The hostel portion in the complex with a NOFA of some 20 875 m² comprises the following facilities –

- (a) a total of 1 726 student hostel places with a NOFA of some 14 932 m², including accommodation for wardens, tutors, managers and staff;
- (b) common facilities with a NOFA of some 5 225 m², including canteen, sitting areas, recreation spaces, reading rooms and common rooms; and
- (c) supporting facilities with a NOFA of some 718 m², including management office, laundries, kitchens and store rooms.

2. The University plans to commence the construction works in May 2019 for completion in October 2023.

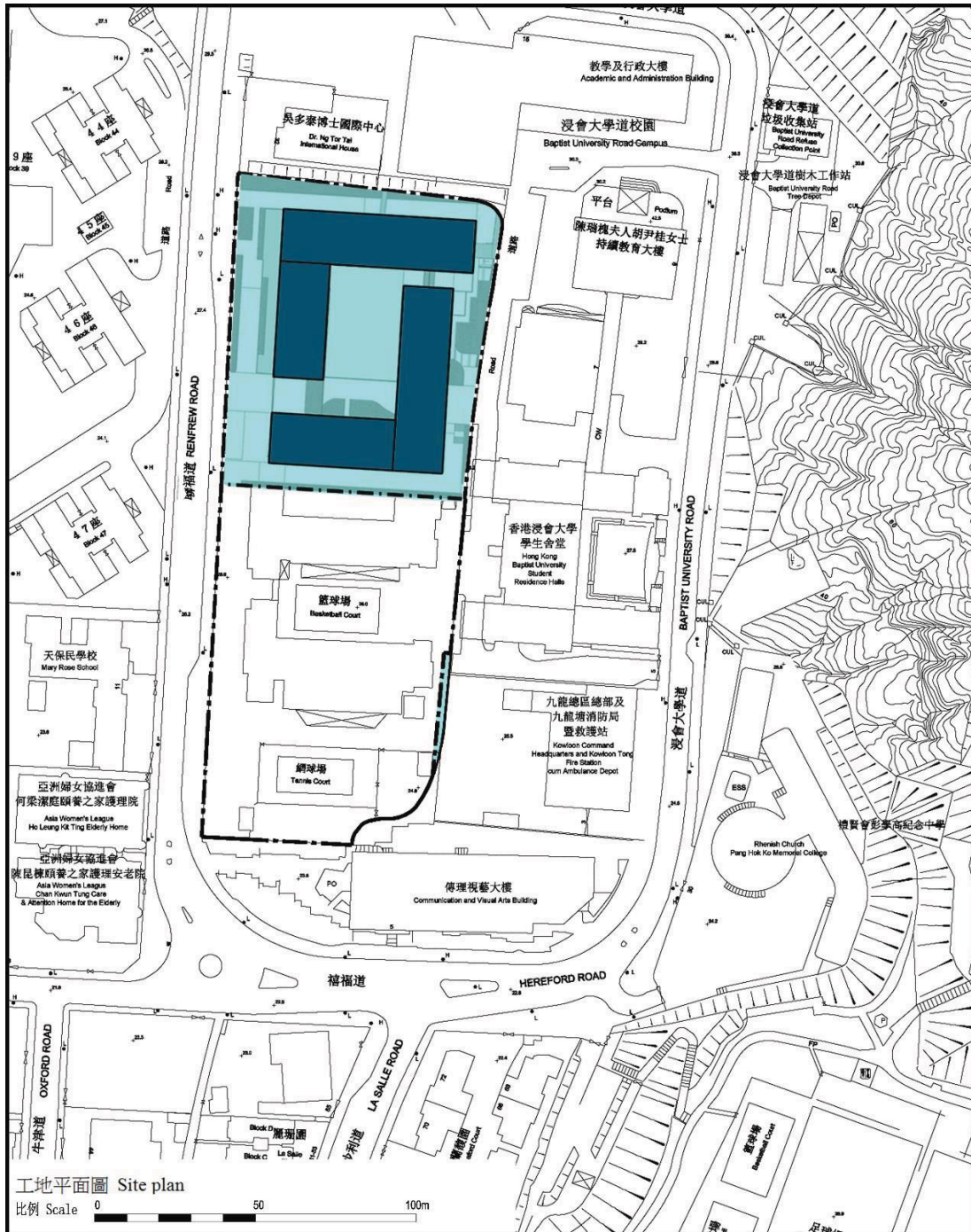
3. The site plan, sectional plan and artist's impression of the Complex are at Annexes A, B and C to Enclosure 1 respectively.

¹ NOFA is the floor area actually allocated to the users of a building for carrying out the intended activities. Unlike the construction floor area which takes into account all areas within the building structure envelop, NOFA does not include areas for such facilities (if any) as toilets, bathrooms and shower rooms, lift lobbies, stair halls, public or shared corridors, stairwells, escalators and lift shafts, pipe or services ducts, barriers-free access facilities, gender mainstreaming facilities, refuse chutes and refuse rooms, balconies, verandas, open decks and flat roofs, parking spaces, loading and unloading areas and mechanical plant rooms, etc.

The Hong Kong Baptist University
Hostel Complex at 30 Renfrew Road, Kowloon Tong

香港浸會大學
九龍塘聯福道 30 號宿舍大樓

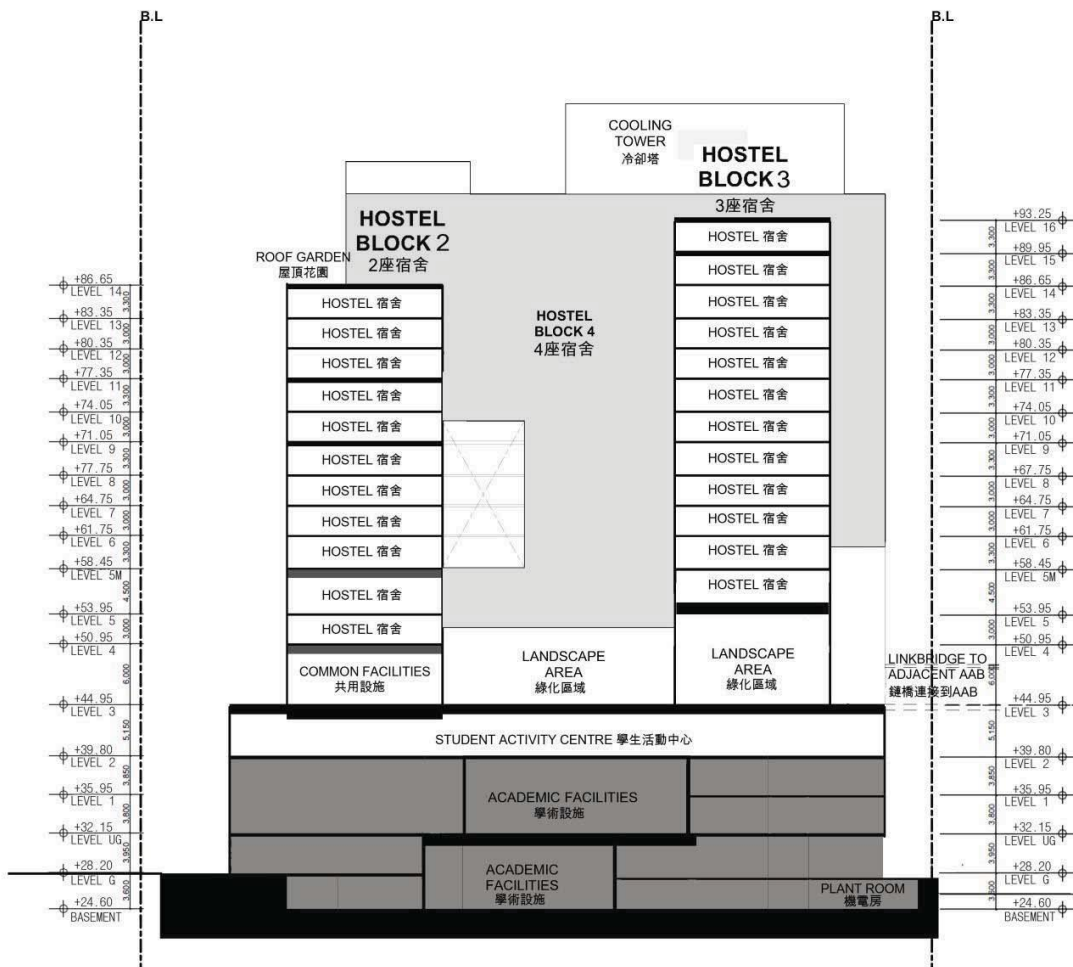
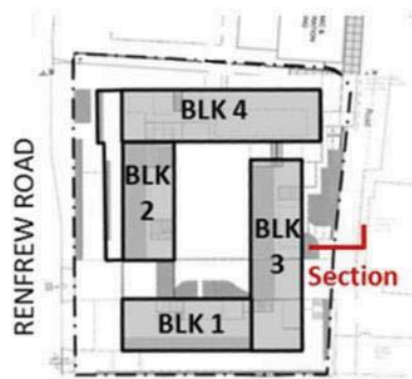
Site plan 工地平面圖



The Hong Kong Baptist University
Hostel Complex at 30 Renfrew Road, Kowloon Tong

香港浸會大學
九龍塘聯福道 30 號宿舍大樓

Sectional Plan 截面圖



**The Hong Kong Baptist University
Hostel Complex at 30 Renfrew Road, Kowloon Tong**

香港浸會大學
九龍塘聯福道 30 號宿舍大樓



View of hostel complex from south (artist's impression)

由南面望向宿舍大樓(構思圖)

Enclosure 2

300-Place Student Hostel at New Asia Campus

The Chinese University of Hong Kong

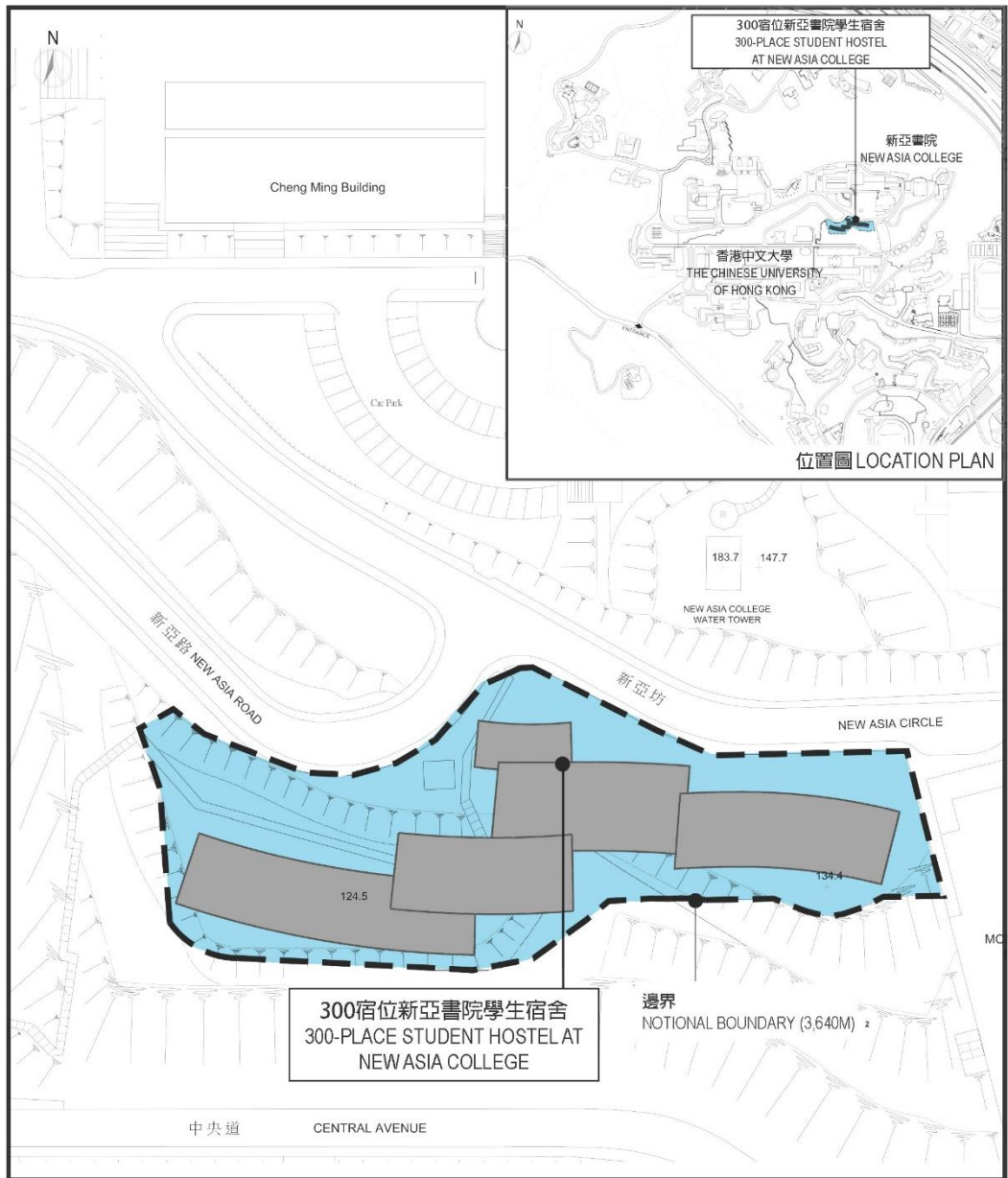
The project site is adjacent to the New Asia Circle of New Asia College at the campus of The Chinese University of Hong Kong. The proposed scope of works includes the construction of a multi-storey student hostel block with a net operational floor area (NOFA) of some 3 366 square metres (m²) and providing the following facilities –

- (a) a total of 300 student hostel places with a NOFA of 2 480 m², including accommodation for wardens and tutors;
 - (b) common facilities with a NOFA of some 815 m², including a multi-purpose hall, warden office, music room, common rooms, pantries, and study rooms; and
 - (c) supporting facilities with a NOFA of some 71 m², including reception, mail box area, attendant's room, laundries and store rooms.
2. The University plans to commence the construction works in October 2019 for completion in June 2023.
 3. The location plan and site plan, sectional plan and artist's impressions of the proposed works are at Annexes A, B and C to Enclosure 2 respectively.

**The Chinese University of Hong Kong
300-Place Student Hostel at New Asia Campus**

香港中文大學
提供 300 個宿位的新亞書院學生宿舍

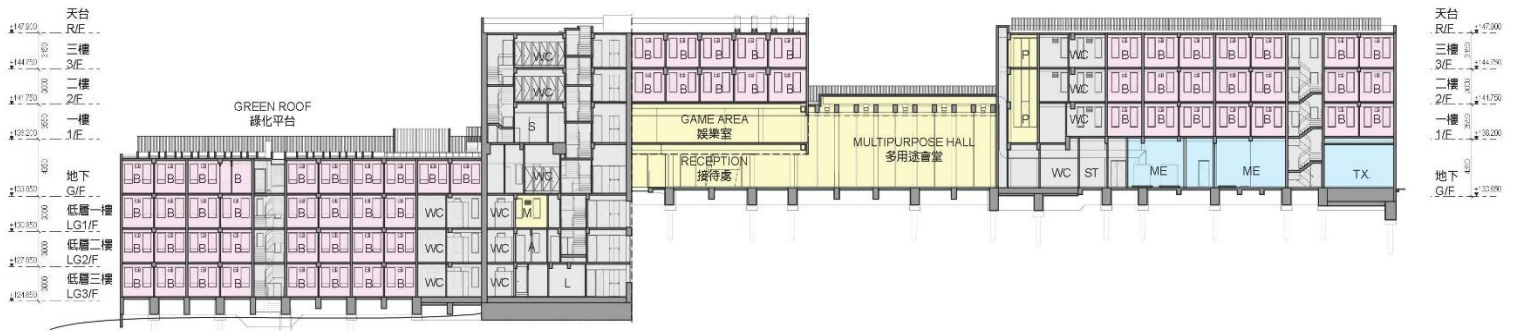
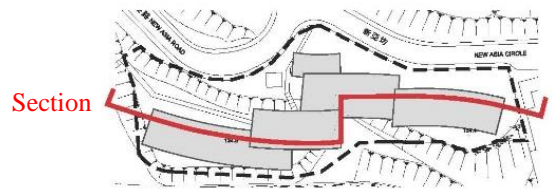
Site plan 工地平面圖



The Chinese University of Hong Kong
300-Place Student Hostel at New Asia Campus

香港中文大學
提供 300 個宿位的新亞書院學生宿舍

Sectional Plan 截面圖



LEGEND 圖例

A	ATTENDANT'S ROOM	出勤室
B	STUDENT BEDROOM	學生房間
L	LAUNDRY	洗衣房
M	MUSIC ROOM	音樂室
ME	MECHANICAL AND ELECTRICAL	機電房
P	PANTRY	茶水間
ST	STORAGE	儲物室
TX	TRANSFORMER ROOM	電力變壓房
WC	BATHROOM/TOILET	洗手間及浴室

**The Chinese University of Hong Kong
300-Place Student Hostel at New Asia Campus**

香港中文大學
提供 300 個宿位的新亞書院學生宿舍



View of student hostel from the southwest (artist's impression)
從西南面望向學生宿舍的構思圖



View of student hostel's entrance from the west (artist's impression)
從西面望向學生宿舍入口的構思圖

Student Residence at Mui Fong Street

The University of Hong Kong

The project site is located at Mui Fong Street, Sai Ying Pun. The proposed scope of works includes the construction of a 23-storey hostel block with a net operational floor area (NOFA) of some 2 456 square meters (m²) and providing the following facilities –

- (a) a total of 250 student hostel places with a NOFA of some 1 821 m² , including accommodation for warden, senior tutor and attendants;
- (b) common facilities with a NOFA of some 578 m² , including function area, entrance lobby, common space at typical floor; and
- (c) supporting facilities with a NOFA of some 57 m², including general office, laundry, mail box area and store rooms.

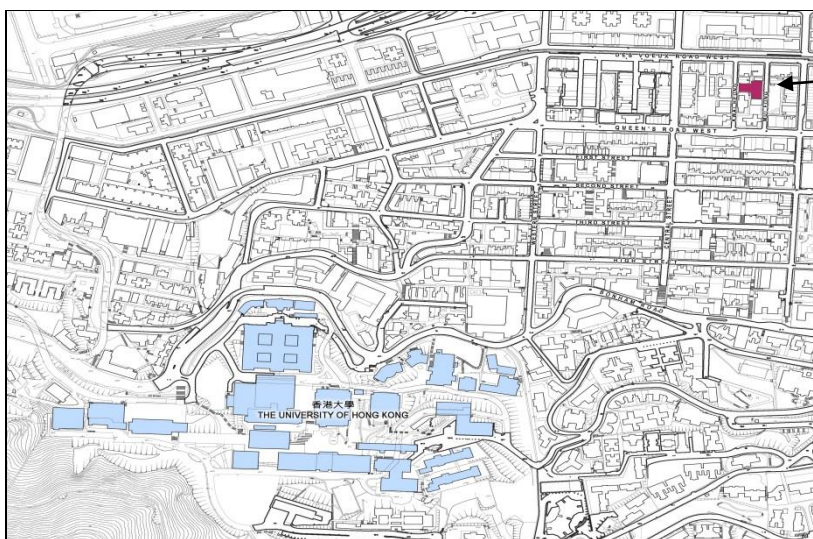
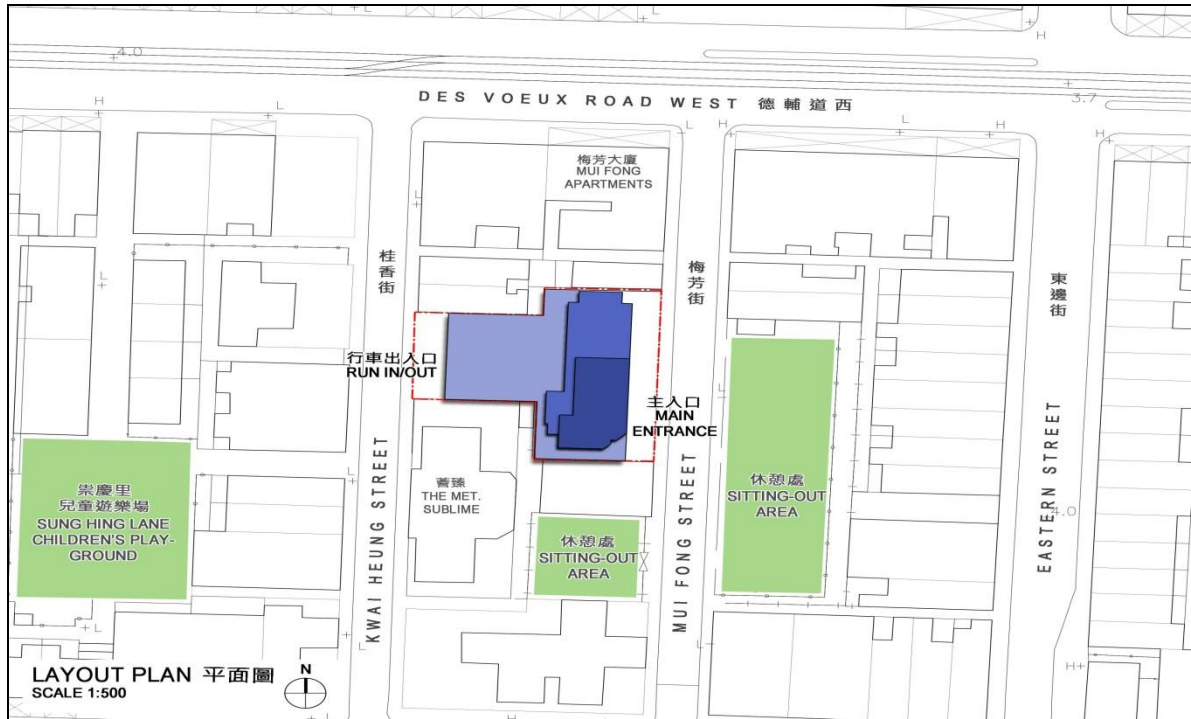
2. The University plans to commence the construction works in May 2019 for completion in April 2022.

3. The location plan and site plan, sectional plan and artist's impression of the student residence are at Annexes A, B and C to Enclosure 3 respectively.

The University of Hong Kong
Student Residence at Mui Fong Street

香港大學
梅芳街學生宿舍

Site plan 工地平面圖



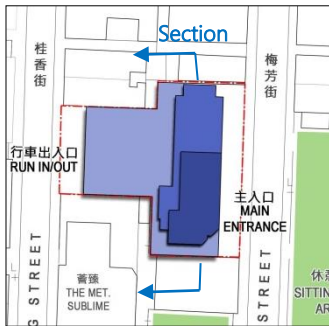
Site for student residence
at Mui Fong Street
梅芳街學生宿舍工地

Location Plan 位置圖
Scale 1:4000

The University of Hong Kong
Student Residence at Mui Fong Street

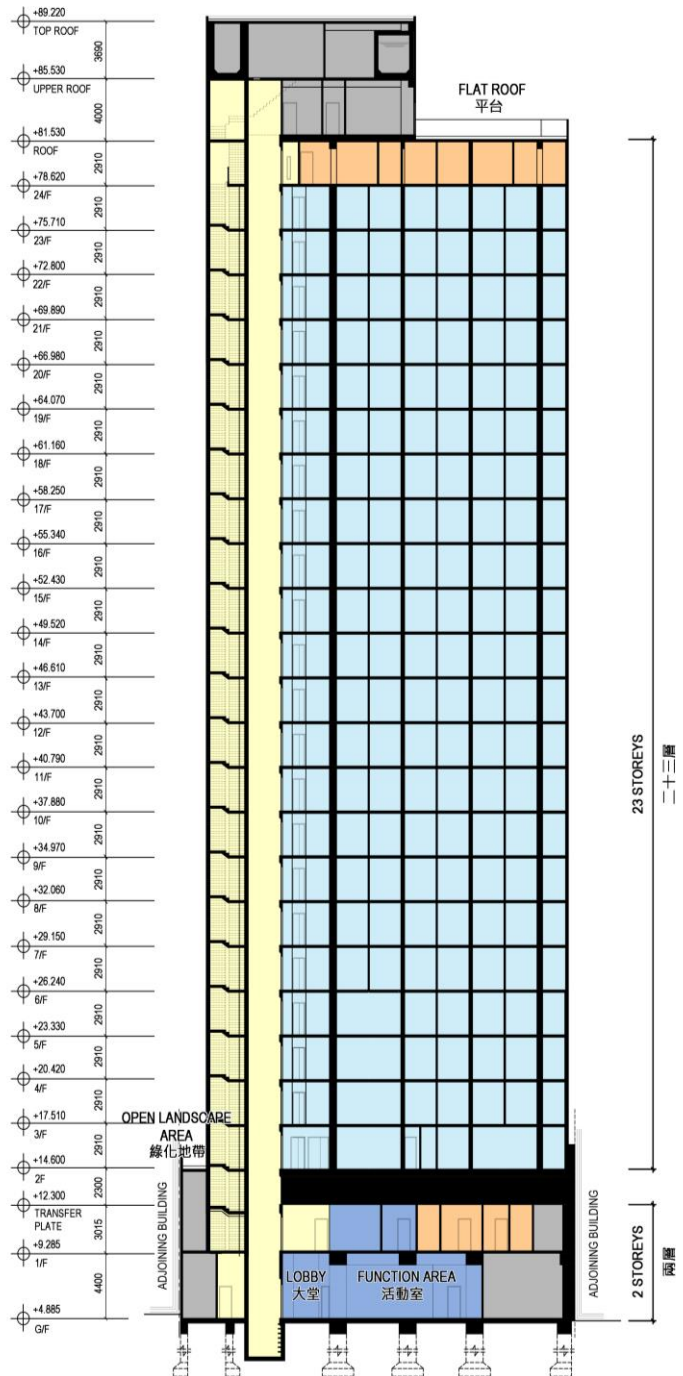
香港大學
梅芳街學生宿舍

Sectional Plan 截面圖



LEGEND
圖例

- HOSTEL ROOMS
學生宿舍
- HOSTEL FACILITIES
宿舍設施
- STAFF ACCOMMODATION
職員宿舍
- LIFT AND STAIRCASE
電梯及樓梯
- PLANT ROOMS
機房



附件3 附錄C Annex C to Enclosure 3

**The University of Hong Kong
Student Residence at Mui Fong Street**

香港大學
梅芳街學生宿舍

View of the building (artist's impression) 建築物外觀構思圖



Student Residence at Wong Chuk Hang Site

The University of Hong Kong

The project site is located at Police School Road, Wong Chuk Hang. The proposed scope of works includes the construction of two 17-storey hostel blocks on a 3-storey podium, with a net operational floor area (NOFA) of some 14 264 square meters (m²) and providing the following facilities –

- (a) a total of 1 224 student hostel places with a NOFA of some 12 790 m² , including accommodation for wardens, tutors and attendants;
 - (b) common facilities with a NOFA of some 1 240 m² , including a multi-purpose hall with kitchen, a quiet room for reading and study, student associations office, student Co-op, meeting rooms, recreation rooms and spaces and common rooms; and
 - (c) supporting facilities with a NOFA of some 234 m², including a management office, an attendant's counter, laundries and store rooms.
2. The University plans to commence the construction works in July 2019 for completion in November 2023.
3. The location plan and site plan, sectional plan and artist's impression of the student residence are at Annexes A, B and C to Enclosure 4 respectively.

The University of Hong Kong
Student Residence at Wong Chuk Hang Site

香港大學
黃竹坑學生宿舍

Site plan 工地平面圖



Scale 1:700



Site for Student Residence at Wong Chuk Hang
黃竹坑學生宿舍工地

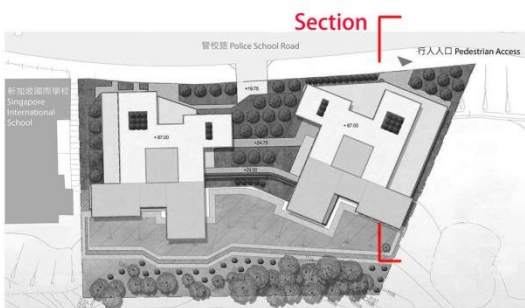
Location Plan 位置圖

Scale 1:2000

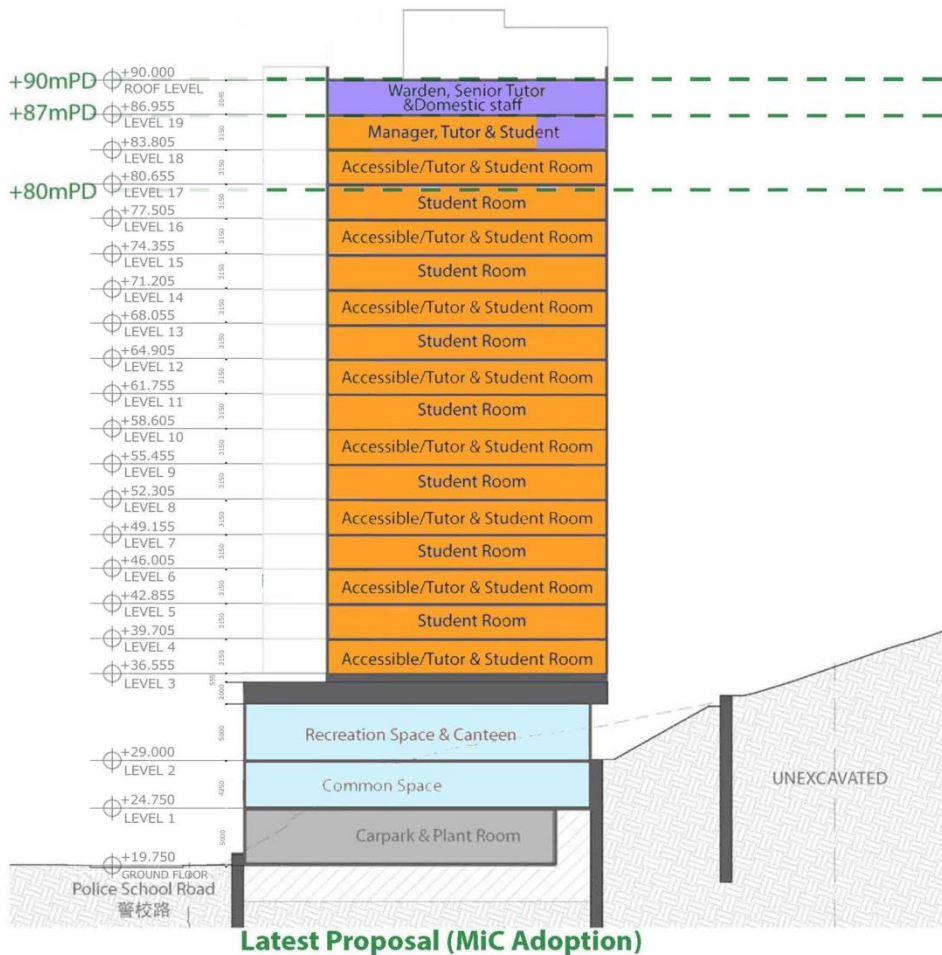
The University of Hong Kong
Student Residence at Wong Chuk Hang Site

香港大學
黃竹坑學生宿舍

Sectional Plan 截面圖



- 圖例
LEGEND
- 共用設施
COMMON FACILITIES
 - 學生住宿
STUDENT HOSTEL
 - 停車場及機電房
CAR PARK & PLANT ROOM
 - 舍監、導師和服務員住宿
ACCOMMODATION FOR WARDENS,
TUTORS AND ATTENDANTS



**The University of Hong Kong
Student Residence at Wong Chuk Hang Site**

香港大學
黃竹坑學生宿舍

View of the building (artist's impression) 建築物外觀構思圖

