



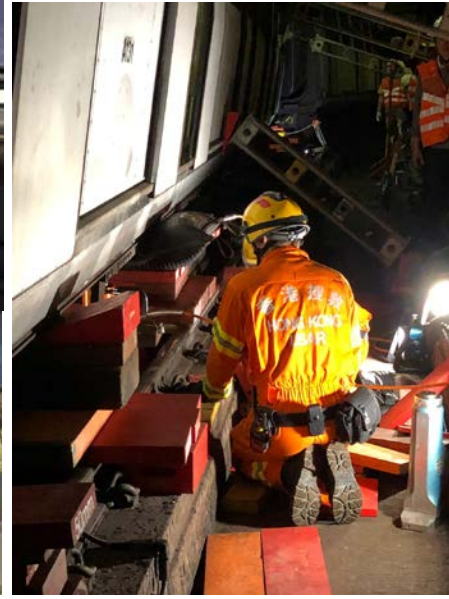
# Incident of the new signalling system testing on Tsuen Wan Line on 18 March 2019

LegCo Panel on Transport  
Subcommittee on Matters Relating to Railways

March 2019



# Thanks to passengers, colleagues and government departments



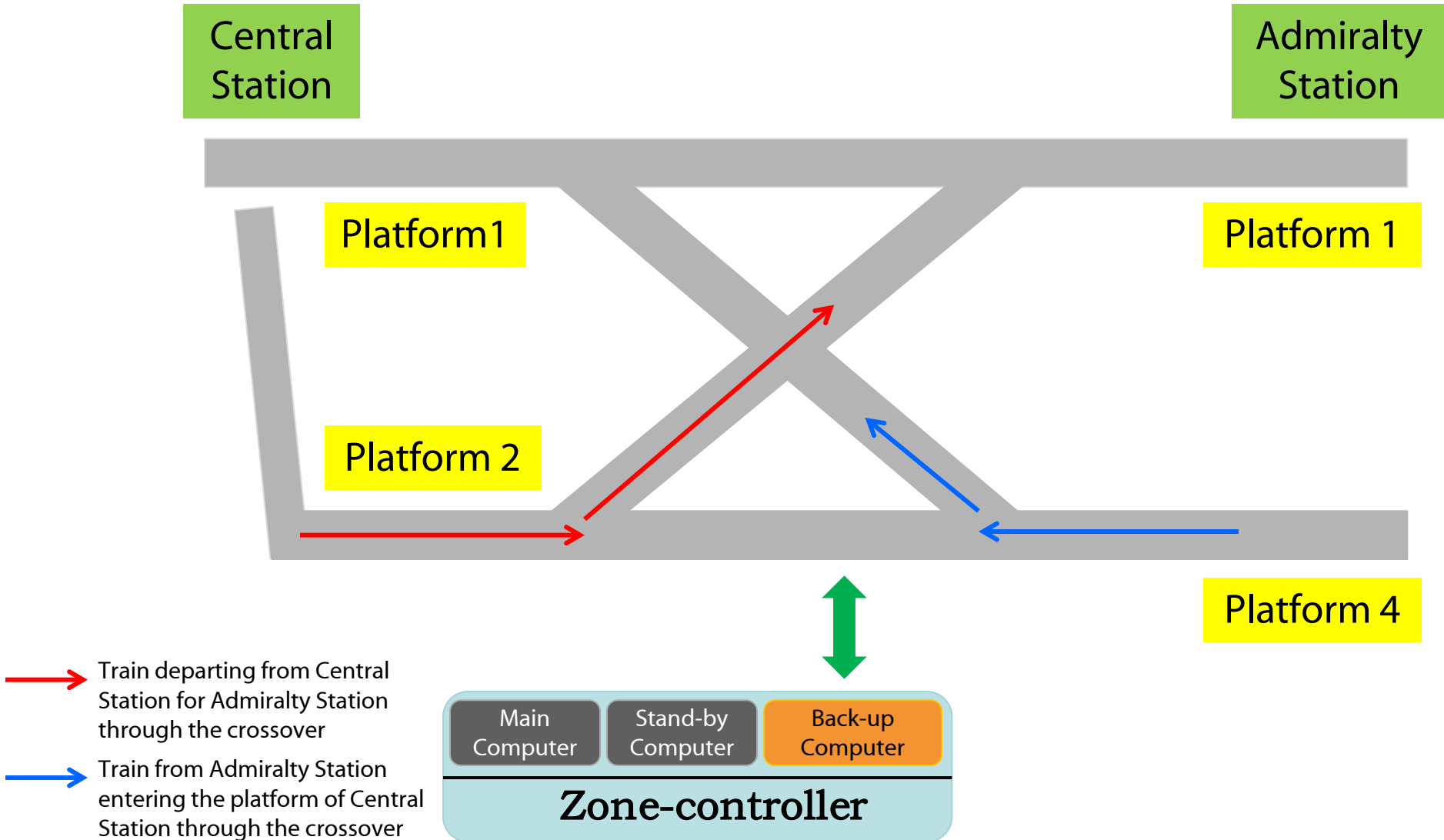
# Safety is of utmost importance to MTR

- 1. Suspend all train testing for signalling upgrade program**
- 2. Set up Investigation Panel**
  - Local and overseas experts
  - Comprehensive investigation
  - Report to be ready in 3 months

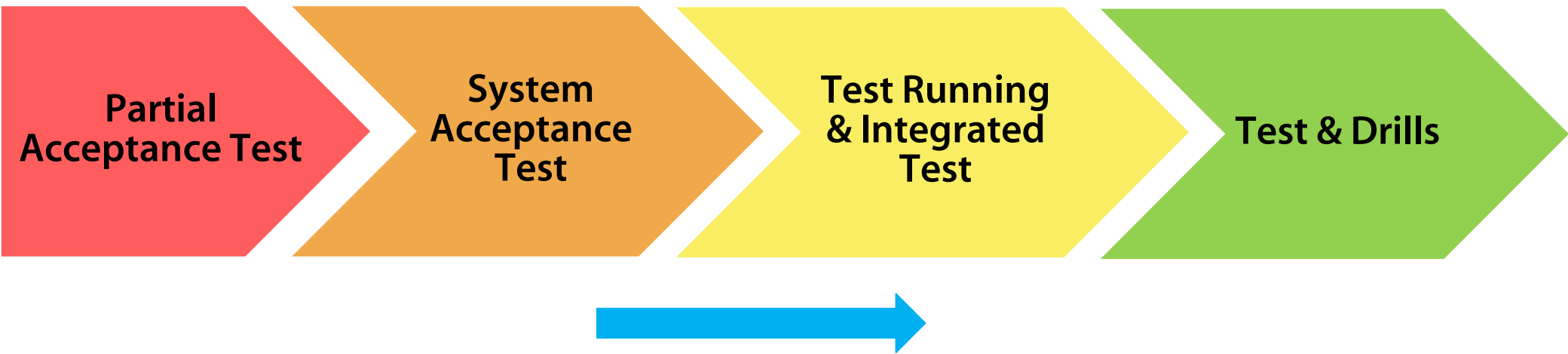
3. 3 days of special concessionary fare  
for adult octopus users



# The Incident



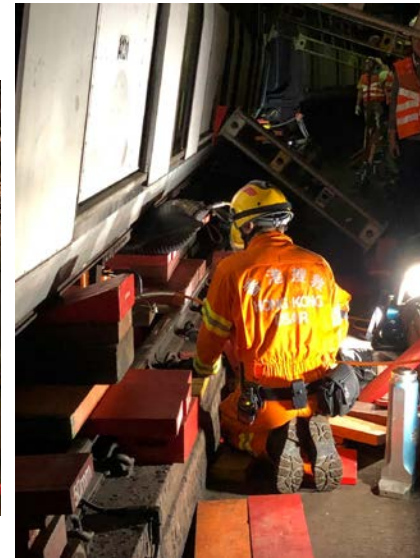
# Signalling System Testing Roadmap - 4 Steps



- **Pragmatic, the testing conducted prudently and incrementally by phases**
- **Followed stringent international standards**

# Recovery Works Challenging

- Limited space inside the tunnel
- About 120 operations engineering staff assisted in the recovery works for 48 hours



# Tsuen Wan Line Train Service



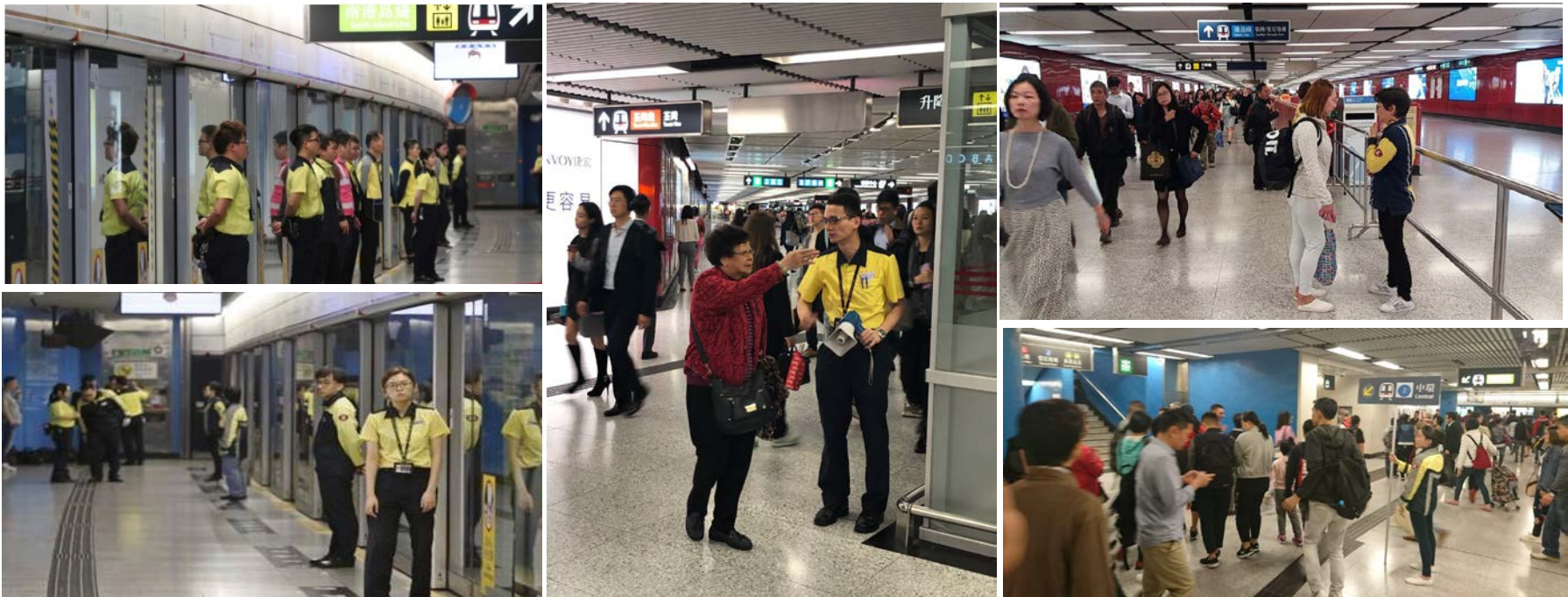
Train service between Central and Admiralty Stations on the Tsuen Wan Line temporarily suspended

Passengers could travel between Central and Admiralty Stations on the Island Line



# Crowd Control Measures

Deployed extra 250 staff to assist passengers during peak hours



**Current  
Signalling System**



**New  
Signalling System  
under testing**

# Sunny Bay Station Overhead Line Incident on 24 March 2019

# Train Service Affected

- Overhead line near Sunny Bay damaged
- Loosened overhead equipment



# Crown Control Measures

- **Deployed an additional 100 staff**
- **Arranged more than 70 shuttle buses**

- Thank you -