



沙田至中環綫項目工程進展

Progress Update on the Construction of the Shatin to Central Link

立法會交通事務委員會

鐵路事宜小組委員會

Legislative Council Panel on Transport

Subcommittee on Matters Relating to Railways

2019年12月6日

6 December 2019



- 整體工程進展
Overall project progress
- 紅磡站擴建部分及其相連結構的適當措施
Suitable measures at Hung Hom Station Extension and adjacent structures
- 屯馬綫其他新車站的審核工作
Verification of other new Tuen Ma Line stations
- 屯馬綫一期開通
Opening of Tuen Ma Line Phase 1
- 紅磡至金鐘段
Hung Hom to Admiralty Section

整體工程進展

Overall project progress

截至 2019年9月30日整體工程進度

As at 30 Sep 2019,
of the overall works completed

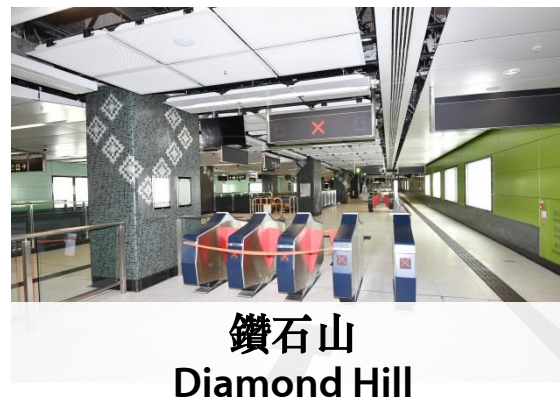
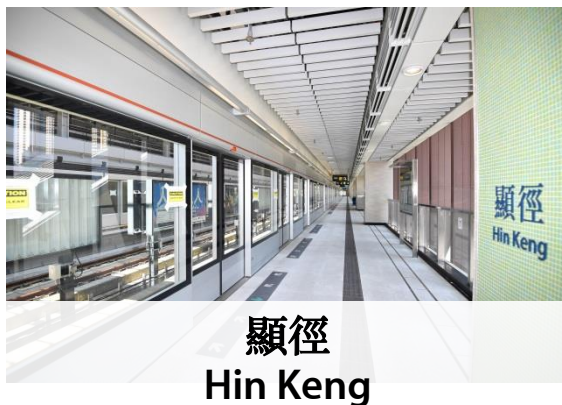
91%



車站的法定檢測工作

Statutory inspections for stations

- 下列各車站的法定檢測工作已完成
Statutory inspections for the below stations are complete



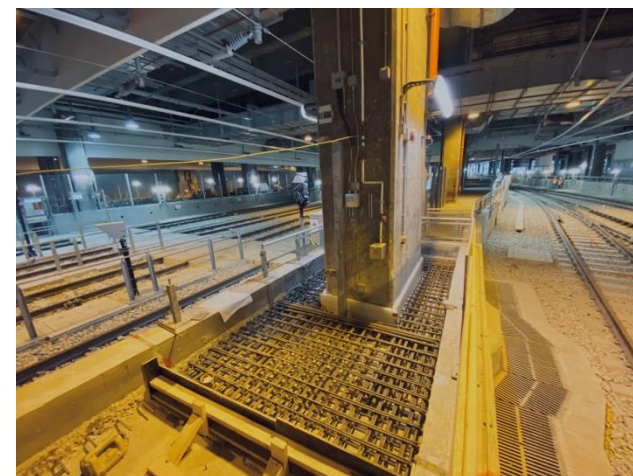
紅磡站擴建部分及其相連結構的 適當措施

Suitable measures at Hung Hom Station Extension
and adjacent structures

適當措施的詳細設計

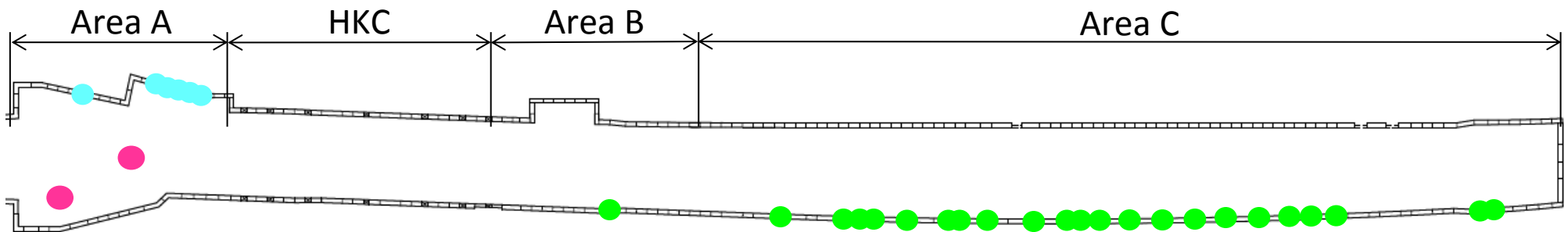
Detailed design of suitable measures

- 顧問利用更精密仔細的結構模擬系統，根據工地實際建造狀況，落實適當措施的詳細設計。
Detailed design of suitable measures was refined by consultant using a more sophisticated approach to the structural modelling and taking account of the actual constructed conditions.
- 於紅磡站擴建部分、紅磡列車停放處及南面連接隧道的指定位置加厚層板及牆身、加裝鋼筋、支柱及支撐架。
A combination of slab and wall thickening; installation of dowel bars, struts and localised columns will be carried out in areas of Hung Hom Station Extension, Hung Hom Stabling Sidings and South Approach Tunnels.
- 詳細設計已獲政府接納，並於十月開始施工。
The detailed design has been accepted by Government.
Work on site commenced in October.



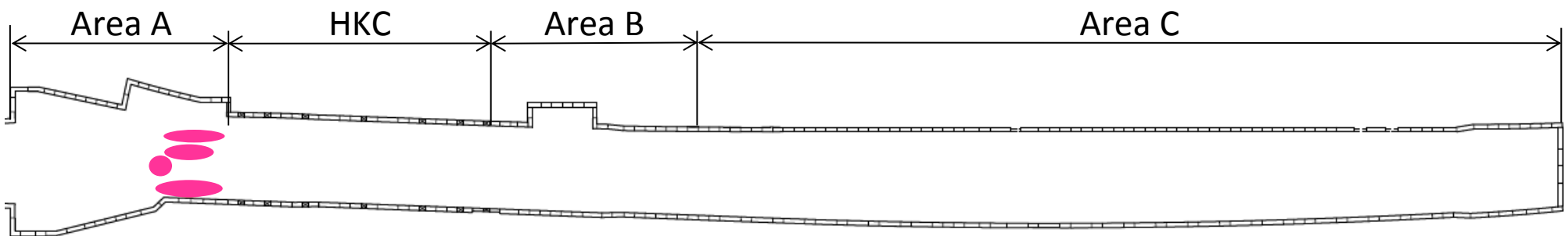
紅磡站擴建部分適當措施的位置示意圖

Hung Hom Station Extension - Indicative location of suitable measures



東西走廊月台層板
EWL platform slab

紅磡站的適當措施工程經已展開
Suitable measures at HUH have commenced



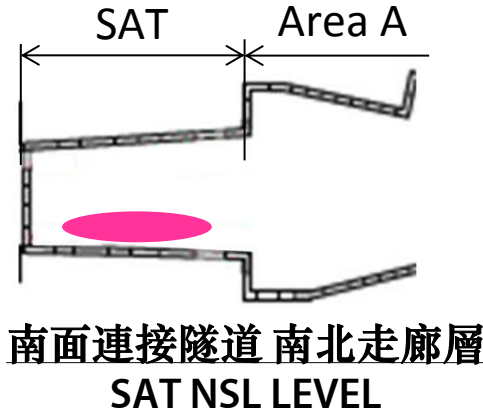
南北走廊月台層板
NSL platform slab

圖例 LEGEND (extent & locations indicative)

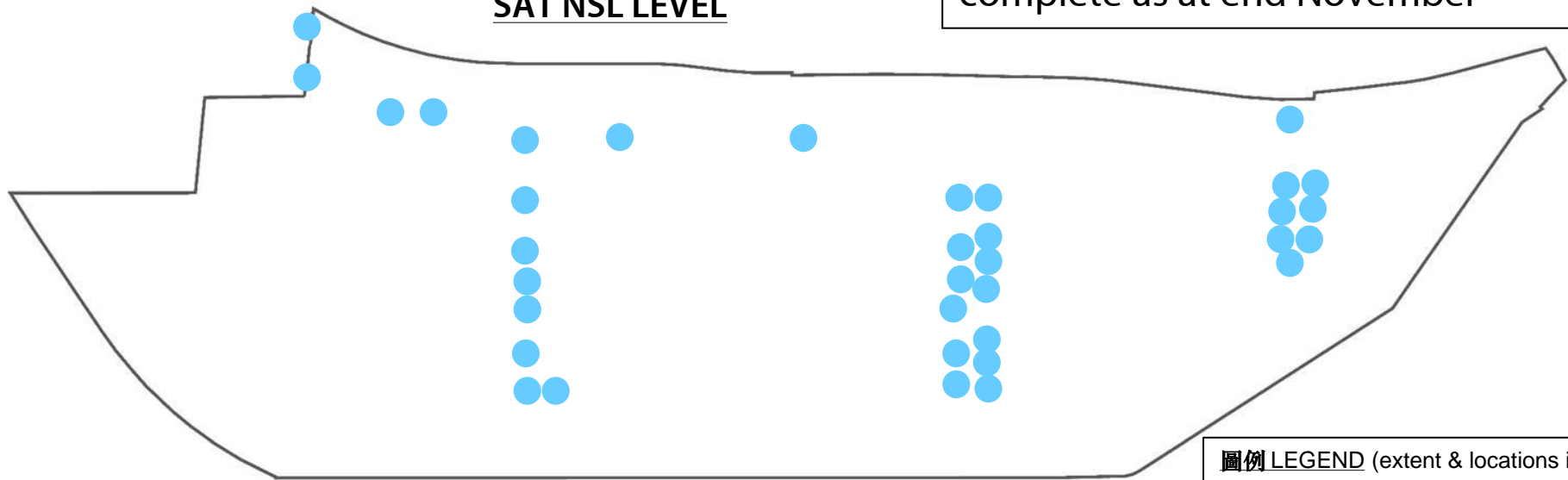
- 箍筋 Shear Links
- 螺絲帽接駁 Coupler Connections
- 施工連接縫 Construction Joints

南面連接隧道及紅磡列車停放處適當措施的位置示意圖

SAT and HHS - Indicative location of suitable measures



截至11月底，紅磡列車停放處的適當措施工程已完成超過50%
Suitable measures at HHS are over 50% complete as at end November



紅磡列車停放處
HUNG HOM STABLING SIDINGS

圖例 LEGEND (extent & locations indicative)

- 箍筋 Shear Links
- 螺絲帽接駁 Coupler Connections

監督執行適當措施

Supervising the Implementation of Suitable Measures

- 加強工地檢察及監督工作，確保工作按照地盤監督計劃進行，包括：
Robust site inspection and supervision to ensure the works are in line with the site supervision plan, including:
 - 專職監督團隊派駐工地
Dedicated on-site supervision team
 - 數碼監督系統
Digital supervision system
 - 額外審核及檢查
Additional audits and checks
- 正致力加快工作，目標於2020年年中完成施工，較原訂計劃略為提早。
The works are being expedited for target completion in mid-2020, slightly ahead of the original plan.

屯馬綫其他新車站的審核工作

Verification of other new Tuen Ma Line stations

審核結果

Audit results

- 超過九成與結構有關的檢查及測量申請表格能在審核中呈示。另外亦有足夠的照片記錄及工地日誌等佐證資料，證明有關的工序是在充分的監督下完成。

Over 90% of the structure related RISC forms are available. Further supplementary evidence, such as photographs and site diaries, has been identified to demonstrate the completed works on site were adequately supervised.

	應存表格總數 No. of RISC forms	現存表格數目 No. of available RISC forms
顯徑 Hin Keng	631	602
鑽石山 Diamond Hill	560	520
啟德 Kai Tak	804	657
宋皇臺 Sung Wong Toi	1,077	1,020
土瓜灣 To Kwa Wan	751	661
總數 Total	3,823	3,460 (>90%)

屯馬綫一期開通

Opening of Tuen Ma Line Phase 1

屯馬綫一期 - 烏溪沙至啟德

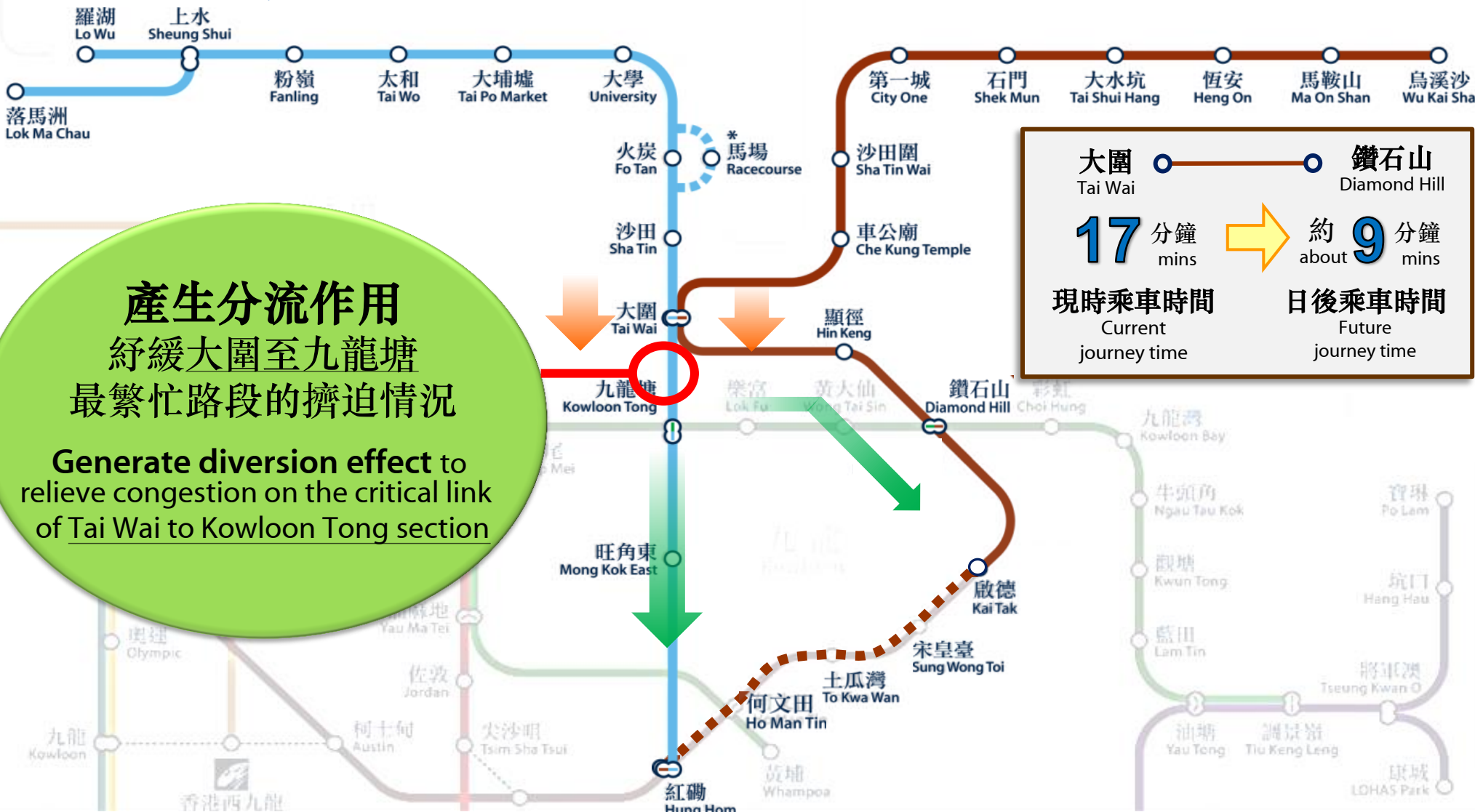
Tuen Ma Line Phase 1 – Wu Kai Sha to Kai Tak



延伸馬鞍山綫至
啟德
Extending Ma On Shan Line to
Kai Tak

接通新界至九龍東的新鐵路綫

New railway line connecting New Territories to Kowloon East



產生分流作用
 紓緩大圍至九龍塘
 最繁忙路段的擠迫情況

Generate diversion effect to
 relieve congestion on the critical link
 of Tai Wai to Kowloon Tong section

大圍 Tai Wai	○	鑽石山 Diamond Hill
17 分鐘 mins	➔	約 9 分鐘 about 9 mins
現時乘車時間 Current journey time		日後乘車時間 Future journey time

試營運工作全面展開

Trial operations in full swing

- 試營運工作於十月底展開，為鐵路、列車服務及車站設施進行測試。
Trial Operations commenced in late October. Performance tests on the railway, train service and station facilities are underway.
- 部分馬鞍山綫列車已開始於新建路段進行測試。
Some Ma On Shan Line trains are carrying out testing along the new section.
- 列車其後會按屯馬綫一期暫定時間表，模擬日常及繁忙時間行車。
Train tests will simulate the tentative service timetable of TML Phase 1 at later stage including normal and peak hour operations.



屯馬綫一期將於2020年第一季通車

Tuen Ma Line Phase 1 is expected to open in Q1 2020

顯徑
Hin Keng



鑽石山
Diamond Hill



啟德
Kai Tak



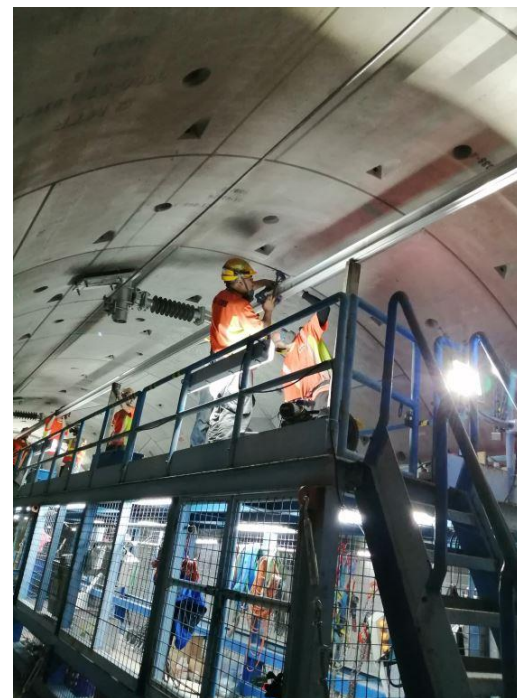
紅磡至金鐘段

Hung Hom to Admiralty Section

紅磡至金鐘段

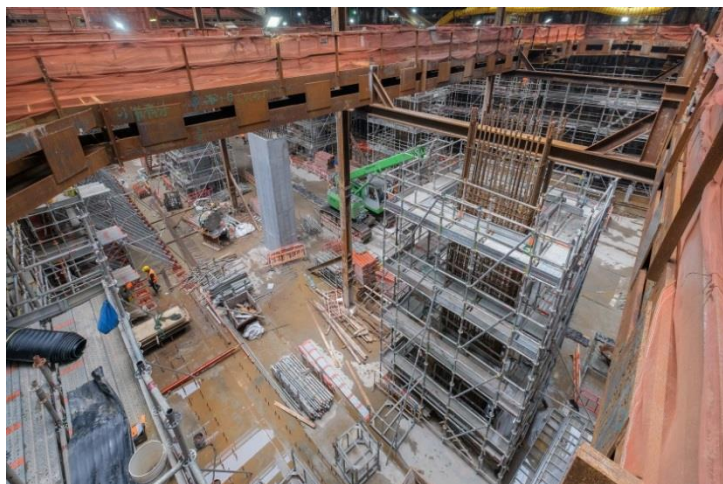
Hung Hom to Admiralty Section

- 以沉管隧道方式興建的過海鐵路隧道已經完成土木工程
Civil works for the Immersed Tube Cross Harbour Rail Tunnel are complete
- 港島段正進行軌道鋪設及架空電纜工程
Track laying and overhead line installation works are in progress on the Hong Kong Island



會展及金鐘站

Exhibition Centre and Admiralty stations



- 會展站正全面開展複雜的結構工程，將會是工程進度的關鍵。

Structural works at Exhibition Centre Station are in full swing. They are complex and becoming critical.



- 金鐘站擴建部分的軌道鋪設及月台幕門安裝工程已完成，現正在進行扶手電梯安裝工程。

At the extended Admiralty Station, track laying and platform screen doors installation works are complete, while escalator installation is in progress.

紅磡至金鐘段現時計劃的工序安排

Current planned sequence of activities for the Hung Hom to Admiralty Section

- 1 監察屯馬綫一期開通對東鐵綫所起的分流作用**
Observe diversion effect on the East Rail Line after Tuen Ma Line Phase 1 opening
- 2 調整紅磡站以北的軌道 (分線工程)**
Realign trackwork just north of Hung Hom Station (The bifurcation work)
陸續以九卡列車取代十二卡列車
Commence the mixed fleet operation changing the EAL trains from 12 cars to 9 cars train
- 3 進行全綫動態測試、可靠性測試及試營運**
Conduct full line dynamic testing, reliability testing and trial operations



近月受嚴重破壞的東鐵綫現有鐵路設施須優先於晚間非行車時間進行維修，影響到東鐵綫新信號系統測試及其後工序。

Priority for non-traffic hours possession has to be given to repairing the damaged operating railway system of East Rail Line (EAL). This is impacting the EAL signalling testing and subsequent activities.

總結

Conclusion

- 屯馬綫一期將於2020年第一季通車。
Tuen Ma Line Phase 1 is expected to open in Q1 2020.
- 港鐵公司正致力加快紅磡站擴建部分及其相連結構工程的適當措施工作，目標於2020年年中完成。
The Corporation is expediting the implementation of suitable measures at Hung Hom Station Extension and adjacent structures , targeting completion in mid-2020.
- 當適當措施及其後的重置、測試及試運行工作完成後，屯馬綫全綫預計可於2021年開通。
Following completion of the suitable measures works and the subsequent reinstatement, followed by testing and commissioning of the railway systems, the full Tuen Ma Line opening is anticipated to be in 2021.
- 「紅磡至金鐘段」現時很大機會於2022年開通。港鐵公司會繼續致力優化工程時間表。
Commencement of passenger services on Hung Hom to Admiralty Section is now most likely to be in 2022. Efforts continue to optimise the programme.

多謝
Thank You