



沙田至中環綫項目工程進展

Progress Update on the Construction of the Shatin to Central Link

立法會交通事務委員會
鐵路事宜小組委員會

Legislative Council Panel on Transport
Subcommittee on Matters Relating to Railways

2020年3月3日
3 March 2020

- 整體工程進展
Overall project progress
- 屯馬綫一期通車
Opening of Tuen Ma Line Phase 1
- 紅磡站擴建部分及其相連結構的適當措施
Suitable measures at Hung Hom Station Extension and adjacent structures
- 紅磡至金鐘段
Hung Hom to Admiralty Section

截至 2019年12月31日整體工程進度
As at 31 Dec 2019,
of the overall works completed

92%



屯馬綫一期通車

Opening of Tuen Ma Line Phase 1

屯馬綫一期已於2020年2月14日通車

Tuen Ma Line Phase 1 opened on 14 February 2020



延伸馬鞍山綫至
啟德

Extends Ma On Shan Line to
Kai Tak

早上繁忙時段列車班次為3.5分鐘
Morning Peak headway 3.5 mins

屯馬綫一期運作大致暢順

Operation of Tuen Ma Line Phase 1 is Generally Smooth



2月14日通車首日

First service day on 14 February



加派職員協助乘客

Additional staff deployed to assist passengers

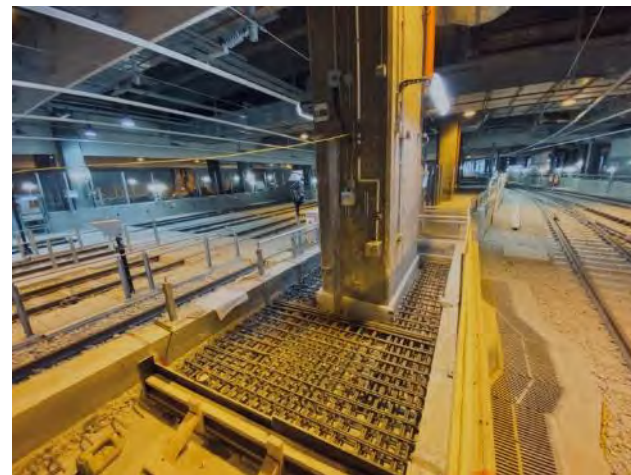
紅磡站擴建部分及其相連結構的 適當措施

Suitable measures at Hung Hom Station Extension
and adjacent structures

監督及執行適當措施

Supervision and implementation suitable measures

- 紅磡列車停放處的適當措施已於2020年1月大致完成。
Suitable measures at Hung Hom Stabling Sidings were substantially completed in January 2020.
- 紅磡站擴建部分及南面連接隧道的適當措施，現正按照地盤監督計劃進行，目前已完成約20%，目標於2020年年中完成。
Suitable measures at Hung Hom Station Extension and South Approach Tunnels are progressing in accordance with the site supervision plan. Work is about 20% complete for target completion in mid-2020.



紅磡至金鐘段

Hung Hom to Admiralty Section

過海及港島段隧道

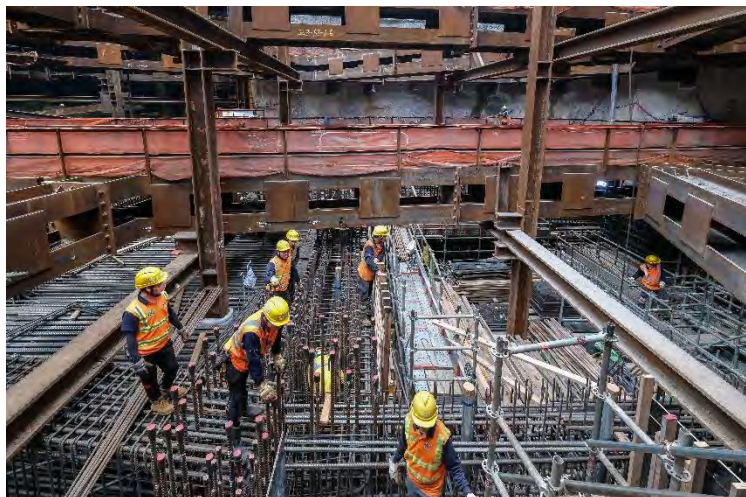
Cross-harbour tunnel and tunnels on Hong Kong Island

- 過海鐵路隧道已完成軌道鋪設工程
Track laying works for the Cross-Harbour Rail Tunnel are complete
- 港島段正繼續進行軌道鋪設及架空電纜工程
Track laying and overhead line installation works continue on Hong Kong Island



會展及金鐘站

Exhibition Centre and Admiralty stations



- 會展站正全面開展複雜的結構工程，將會是工程進度的關鍵。

Structural works at Exhibition Centre Station are in full swing. They are complex and becoming critical.



- 金鐘站擴建部分正在進行裝修、屋宇設備及包括扶手電梯的機電設施的安裝工程。

Architectural finishing works, building services, and E&M work for the extended Admiralty Station are all in progress.

紅磡至金鐘段

Hung Hom to Admiralty Section

- 近月東鐵綫大學站新安裝的設備包括「紅磡至金鐘段」的信號系統受到破壞。維修工作須於晚間非行車時間進行，然而現有營運鐵路系統的維修工作必須優先進行。

Damage occurred in recent months to recently installed equipment in the vicinity of University Station on the East Rail Line (EAL), including signalling control for the Hung Hom to Admiralty Station Section. Repairs have to be done during night time non-traffic possessions, but priority has to be given to operating railway maintenance activities.

- 基於信號系統受破壞及肺炎疫情等最新情況，我們正重新評估「紅磡至金鐘段」時間表。

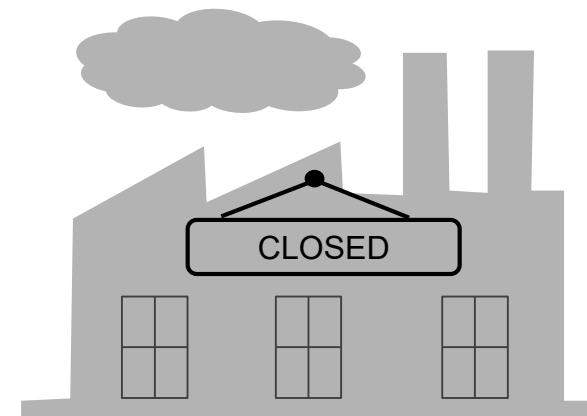
We are re-assessing the programme for the Hung Hom to Admiralty Section to take account of the latest situation, including damage to the signaling equipment and the coronavirus outbreak.



新型冠狀病毒疫情的影響

Impacts from Coronavirus outbreak

- 工廠延長農曆新年休假
Extended closure of factories after Chinese New Year
- 從內地返港工人須進行14日強制檢疫
Compulsory 14-day quarantine for workers who have visited the Mainland
- 海外工程人員來港工作意欲下降
Overseas engineers reluctant to come to HK



總結

Conclusion

- 屯馬綫一期已於2020年2月14日通車。
Tuen Ma Line Phase 1 opened on 14 February 2020.
- 紅磡站擴建部分及其相連結構的適當措施工序目標於2020年年中完成施工。
Implementation of the suitable measures at Hung Hom Station Extension and adjacent structures is targeted to complete in mid-2020.
- 適當措施完成後便會展開其後的重置、測試及試運行工作；預計屯馬綫全綫可於2021年通車。
Following completion of the suitable measures works and the subsequent reinstatement, testing and commissioning of the railway systems will commence, with the full opening of the Tuen Ma Line anticipated to be in 2021.
- 「紅磡至金鐘段」於2022年第一季通車的目標仍充滿挑戰，港鐵公司會繼續致力達致此工程時間表的目標。
Hung Hom to Admiralty Section, the targeted completion in Q1 2022 is still facing challenges and there are continuing efforts being made with the aim of meeting the programme.

多謝
Thank You