

財經事務及庫務局



香港添馬添美道二號  
政府總部二十四樓

**FINANCIAL SERVICES AND THE  
TREASURY BUREAU**

24/F, Central Government Offices,  
2 Tim Mei Avenue, Tamar  
Hong Kong

Translation

傳真號碼 Fax No. : 2147 5240  
電話號碼 Tel. No. : 2810 2232  
本函檔號 Our Ref. : TsyB W 00/645-1-15/3 (20-21)  
來函檔號 Your Ref. :

9 March 2020

The Hon CHAN Kin-por, GBS, JP  
Chairman of the Finance Committee  
Legislative Council Secretariat  
Legislative Council Complex  
1 Legislative Council Road  
Central, Hong Kong

Dear Chairman,

**Finance Committee  
Follow-up to the meeting on 6 March 2020**

In consultation with the relevant bureaux/departments, our consolidated reply to follow-up matters arising from the above meeting is provided at **Enclosure** for your reference.

Yours sincerely,

(Original signed)

(Margaret HSIA)  
for Secretary for Financial Services  
and the Treasury

**Head 701—Land Acquisition****3. Extent and details of land resumption for constructing a sub-station in the Hung Shui Kiu New Development Area, and progress of the discussion between the Government and the affected residents on land resumption arrangements and compensation.**

In carrying out the detailed design for the first phase development works of the Hung Shui Kiu/Ha Tsuen New Development Area, the Government has specifically engaged the Ping Shan Rural Committee (PSRC) on the proposed site of a sub-station in Ping Shan and conducted site visits, such that their concerns and views over the site were listened and responded to. Given that the sub-station will supply electricity to the first batch of multi-storey buildings to be completed for accommodating the affected brownfield operations, timely completion of works related to the sub-station is crucial to taking forward the New Development Area. For site formation of the sub-station, about 5 800 square metres of private land have to be resumed, involving one domestic household and 11 business undertakings. The Lands Department has contacted the affected household and business undertakings.

The current selected site is proposed after taking into account the views previously put forward by the PSRC on different sites and other relevant considerations, including PSRC's views on the current selected site in July 2019. We also wrote to the Yuen Long District Council and the PSRC in September 2019 to report on the selected site.

Over the past few months, we received further views from the PSRC regarding the current selected site and other related issues, including fung-shui of the site, transport connectivity of villages near Hung Uk Tsuen and Kiu Tau Wai, and ways to mitigate flooding risks of the area. Upon receipt of PSRC's views, we approached the PSRC promptly for follow-up discussions. In addition, at a recent meeting with a business operator whose concrete plant is located near the selected site, we explained that any impact of the construction of the proposed sub-station and its operation in the future on the vehicular access to the plant would be avoided as far as possible.

The Government will continue to keep in touch with the PSRC and the business operators and residents affected to follow up on their views and concerns.

**Head 703—Buildings****Head 705—Civil Engineering**

- 4. Regarding the project on constructing additional courtrooms and associated facilities at lower ground fourth floor of the High Court Building, please state the number of courtrooms to be provided and the new location of the High Court Library in the High Court Building upon completion of the project.**

Upon completion of Public Works Project “032LJ – Additional courtrooms and associated facilities at lower ground fourth floor in the High Court Building”, six additional courtrooms and associated facilities including consultation rooms, offices for staff providing support to Judges and public waiting area will be made available. The additional courtrooms will range from about 65 square metres to 100 square metres in size, with layout and configuration similar to those of the existing courtrooms at lower ground fourth floor, and will be equipped with the necessary information technology facilities required by the Judiciary.

The existing High Court Library located at lower ground fourth floor of the High Court Building will be relocated to a nearby location on the first floor of High Block of the Queensway Government Offices to continue to provide support to all users of the High Court.

- 5. Regarding the three projects on setting up quarantine facilities with grants from the Capital Works Reserve Fund (CWRF) block allocations, namely (a) the additional quarantine facilities at the Lei Yue Mun Park and Holiday Village, (b) the additional quarantine facilities at the Sai Kung Outdoor Recreation Centre and (c) the refurbishment of quarantine facilities at the Junior Police Call (JPC) Permanent Activity Centre at Pat Heung, please provide the head/subhead of such expenditures, detailed breakdown of expenses (including but not limited to expenditures on land formation; infrastructure works; procurement of container houses/accommodation structures; renovation, furniture and electrical appliances; and staff costs, etc.) and relevant layout plans/photos.**

Given that some Members have expressed concerns over the creation of a new item of projects on temporary quarantine camps under the block allocations by the Controlling Officer under delegated authority in 2019-20, we are providing the supplementary information of the projects concerned as follows. Relevant layout plans and photos are provided at **Appendix 1**. As pointed out by the Director of Architectural Services at the meeting on 6 March, the new quarantine camps are not “container

houses” but camps built using the “modular integrated construction” method.

Some Members are of the opinion that the Government should take the initiative to mention in the “CWRF block allocations” paper submitted to the Finance Committee the projects on temporary quarantine camps. As a matter of fact, the Government has always set out the items planned to be carried out in the following year as far as practicable in the papers submitted for application for block allocations. After funding approval, there may be occasions where new and unforeseen items be created to address actual needs and changes in the year. The creation of the new item of projects on temporary quarantine camps in response to the COVID-19 outbreak is such an example. The Government has been submitting annual reports to the Public Works Subcommittee to account for the major differences between the actual items and the indicative ones which the Government present to Members for approving the funding allocation. The new items created by Controlling Officers under delegated authority in the year will be marked with an “\*” in the full list of items to be submitted along with the funding applications in the following financial year.

**(I) Construction of Temporary Quarantine Camps at Basketball Court, Upper Lei Yue Mun Park and Holiday Village (Civil Engineering)**

The capital cost of this project is estimated to be \$5 million, broken down as follows –

	<b>Head 705</b>
	<b>Subhead 5101CX</b>
	(\$ million)
(a) Site formation	0.3
(b) Ancillary works including drainage, sewerage, waterworks and electricity supply	4.0
(c) Reinstatement works	0.2
(d) Contingencies	0.5
Total	5.0

**(II) Construction of Temporary Quarantine Camps at Basketball Court, Upper Lei Yue Mun Park and Holiday Village (Buildings)**

The capital cost of this project is estimated to be \$19.5 million, broken down as follows–



	<b>Head 703</b> <b>Subhead 3101GX</b> (\$ million)
(a) Site works	0.3
(b) Building	10.9
(c) Building services	2.2
(d) Drainage	0.2
(e) External works	5.0
(f) Contingencies	0.9
Total	<u>19.5</u>

The construction floor area (CFA) of this project is around 2 330 square metres. The estimated construction unit cost, represented by the building and building services costs, is \$5,622 per square metre of CFA.

**(III) Construction of Temporary Quarantine Camps at Football Pitch, Lower Lei Yue Mun Park and Holiday Village (Civil Engineering)**

The capital cost of this project is estimated to be \$24.5 million, broken down as follows –

	<b>Head 705</b> <b>Subhead 5101CX</b> (\$ million)
(a) Site formation	8.5
(b) Roadworks	3.5
(c) Ancillary works including drainage, sewerage, waterworks and electricity supply	7.0
(d) Reinstatement works	3.0
(e) Contingencies	2.5
Total	<u>24.5</u>

**(IV) Construction of Temporary Quarantine Camps at Football Pitch, Lower Lei Yue Mun Park and Holiday Village (Buildings)**

The capital cost of this project is estimated to be \$29.9 million, broken down as follows –

	<b>Head 703</b>
	<b>Subhead 3101GX</b>
	(\$ million)
(a) Site works	0.5
(b) Building	21.6
(c) Building services	4.5
(d) Drainage	0.4
(e) External works	1.5
(f) Contingencies	1.4
Total	<u>29.9</u>

The CFA of this project is around 6 030 square metres. The estimated construction unit cost, represented by the building and building services costs, is \$4,328 per square metre of CFA.

**(V) Construction of Temporary Quarantine Camps at Mini Soccer Pitch of Sai Kung Outdoor Recreation Centre (Civil Engineering)**

The capital cost of this project is estimated to be \$16.5 million, broken down as follows –

	<b>Head 705</b>
	<b>Subhead 5101CX</b>
	(\$ million)
(a) Site formation	7.0
(b) Ancillary works including drainage, sewerage, waterworks and electricity supply	7.0
(c) Reinstatement works	0.8
(d) Contingencies	1.7
Total	<u>16.5</u>

**(VI) Construction of Temporary Quarantine Camps at Mini Soccer Pitch of Sai Kung Outdoor Recreation Centre (Buildings)**

The capital cost of this project is estimated to be \$29.9 million, broken down as follows –

	<b>Head 703</b>
	<b>Subhead 3101GX</b>
	(\$ million)
(a) Site works	0.2
(b) Building	23.0
(c) Building services	4.4
(d) Drainage	0.4
(e) External works	0.5
(f) Contingencies	1.4
Total	<u>29.9</u>

The CFA of this project is around 3 470 square metres. The estimated construction unit cost, represented by the building and building services costs, is \$7,896 per square metre of CFA.

**(VII) Refurbishment of Existing Quarters, JPC Permanent Activity Centre at Pat Heung, to Temporary Quarantine Camps**

This project refurbishes the existing quarters of the JPC Permanent Activity Centre at Pat Heung by providing a total of 88 temporary quarantine camp units. The estimated expenditure will be charged to **Subhead 3004GX** under **Head 703**. The building and building services costs are estimated at \$7.6 million and \$8.1 million respectively, with the total cost estimated at \$15.7 million.

**Projects on setting up quarantine facilities with grants from the Lotteries Fund (LF)**

**6. Regarding the projects on setting up quarantine facilities with grants from the LF (i.e., the project on constructing additional camps at the JPC Permanent Activity Centre at Pat Heung, and the project on site formation, infrastructure and provision of the first 100 camp units on a government site at Penny’s Bay), the Government explained at the meeting that such grants were made available under “Others” of the LF. In this connection, please provide the documents showing that grants can be made under “Others” of the LF and relevant funding cases (in particular those with uses that are similar to projects related to the setting up of quarantine facilities, if any).**

Use of the Lotteries Fund

Under section 6(4) of the Government Lotteries Ordinance (Cap. 334) (relevant provisions at **Appendix 2**), the Financial Secretary (FS) may appropriate from the LF

moneys for the purpose of financing, by way of grant, loan or advance, the support and development of such social welfare services in Hong Kong as the Chief Executive, after consultation with the Social Welfare Advisory Committee (SWAC), may approve. In this connection, the Social Welfare Department (SWD) updated a list, which had been accepted by the SWAC, in 1994. The list has since served as a guideline for approving applications for LF grants. It covers 47 social welfare services/programmes (as set out at **Appendix 3**), which are categorised into “Family Welfare”, “Elderly”, “Young People”, “Offenders”, “Rehabilitation”, “Community Development” and “Others”. “Camps and Hostels” is classified under “Others”.

Grants from the LF are generally used for settling the cost of welfare provision and related specified facilities (including camps). Capital expenditures of the facilities such as construction, fitting-out works, renovation, and furnishing and equipping works are all included.

#### Vetting Procedures of Projects under the Lotteries Fund

Government departments and non-governmental organisations may submit applications for LF Grant. By providing secretariat services to the Lotteries Fund Advisory Committee (LFAC), the SWD forwards applications received to the LFAC for consideration.

Under powers delegated by the FS, the Director of Social Welfare (DSW) may approve grants for non-experimental projects endorsed by the LFAC that do not exceed \$15 million. For applications of grants above that ceiling, the SWD will, subject to the support of the LFAC, submit them to the Financial Services and the Treasury Bureau (FSTB), as authorised by the FS, for approval.

The LFAC advises the DSW on matters such as grants from the LF. Chaired by the DSW, the LFAC comprises 12 non-official members and a representative from the Labour and Welfare Bureau. The non-official members come from different sectors, including the social welfare sector, medical sector, business/professional sector, academia, information technology sector and local community.

With the support from the Food and Health Bureau, the Development Bureau and relevant works departments sought funding of \$1.1 billion under the LF in early February this year in accordance with the established practice to meet the non-recurrent expenditures on the capital costs for the provision of quarantine camps. The application was supported by the LFAC. As the allocation involved was beyond the delegated authority of the DSW, the SWD proposed to the FSTB the creation of a new commitment item of \$1.1 billion under the LF (Subhead 035 Architectural Services

Department under Head 341 Non-recurrent Grants), with funding applications approved by the FSTB under the delegated powers from the FS.

## **Head 708—Capital Subventions**

- 7. Regarding the renovation of a vacant primary school premises in Kowloon City, please state the planned use of the premises to address Members' concern as the small floor area of the premises is expected to fall short of the requirements of a standard school premises even after renovation.**

It has all along been the policy objective of the Education Bureau (EDB) to put vacant school premises (VSP) into gainful use. When there is a vacant or to-be-vacant school premises, the EDB will assess the VSP's suitability for reallocation for school or other educational uses having regard to factors including the size, location, physical conditions, etc. of the relevant premises, as well as the educational needs and relevant policy initiatives. All the VSP under the EDB's purview are earmarked/retained for school or other educational uses, including catering for the anticipated demand for school places, reprovisioning of existing schools to improve their learning and teaching environment, decanting use by schools undergoing in-situ redevelopment or extension works, etc.

Compared with school premises built on new school sites in accordance with the current school building standards, schools using existing VSP for reprovisioning will have certain technical limitations in terms of size and scale of facilities, etc. However, given the limited availability of new school sites and their distribution across different districts, it is likely that not all districts will have such sites suitable for school reprovisioning. Although some VSPs are smaller in size by the current planning standards, they are still larger than some existing primary school premises. Therefore, making use of suitable VSPs for reprovisioning is a practical and feasible way of improving the teaching and learning environment of schools. In considering the allocation of a particular VSP for reprovisioning, we will also consider whether any schools have indicated their interest in using the VSP for reprovisioning. The ex-Hung Hom Government Primary School VSP in Kowloon City mentioned by Members is one of the examples.

According to the prevailing school allocation mechanism, when the EDB confirms that a site or a VSP can be allocated for school reprovisioning, the EDB will in general conduct a School Allocation Exercise (SAE) on an open, fair and competitive basis by openly inviting applications from all eligible organisations in the territory. Schools may consider if they would submit applications having regard to their school-based

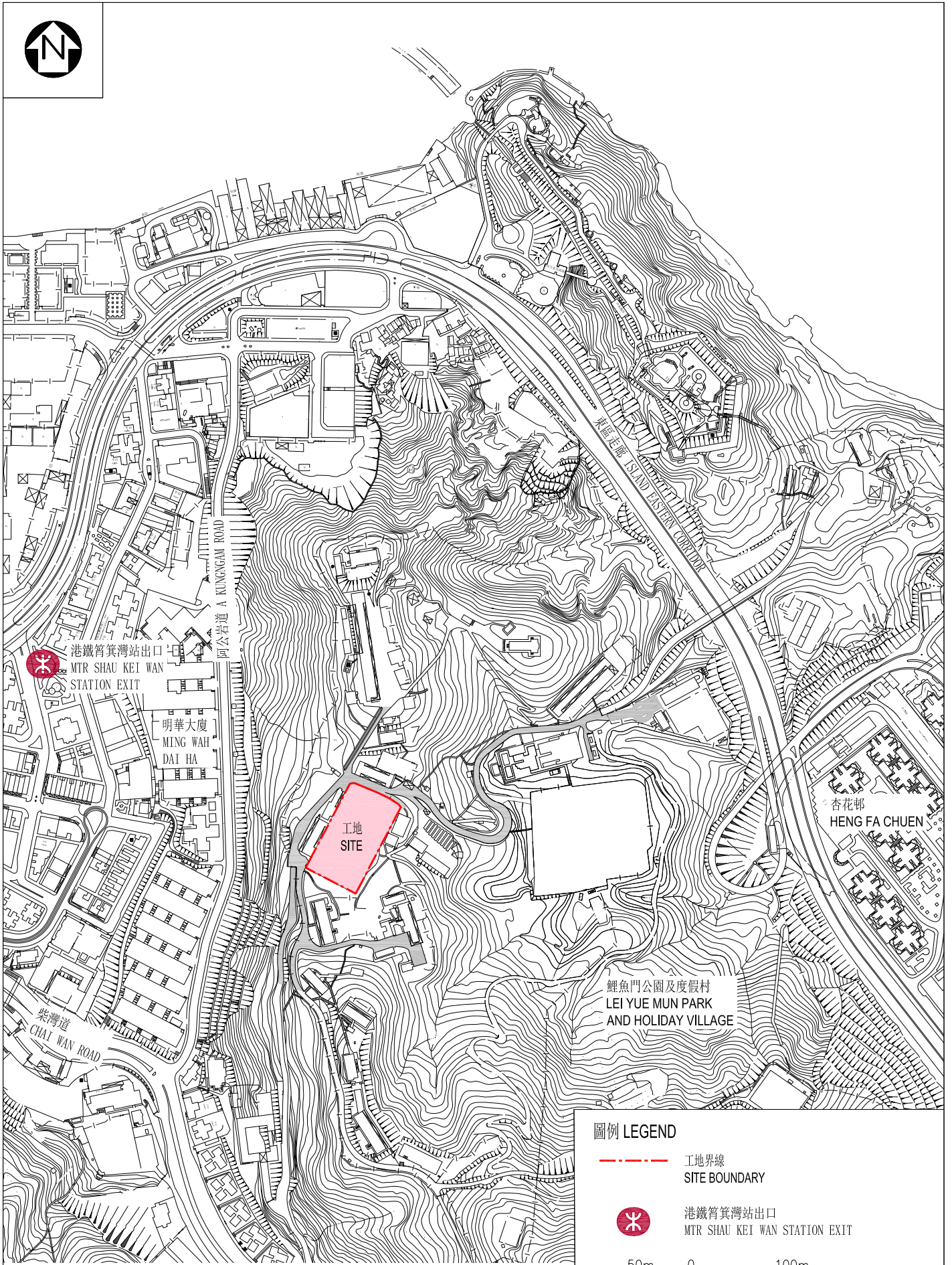
considerations. In this connection, we are allocating the ex-Hung Hom Government Primary School VSP for reprovisioning of existing primary schools through the Fourth SAE 2019 which was launched in August 2019. If the VSP concerned is successfully allocated, the EDB will conduct suitable refurbishment works to bring the learning environment up to the required hygienic and safety standards, and will closely liaise with the primary school allocated with the premises on the refurbishment arrangements. The SAE is underway and the results are expected to be announced in the first half of this year.

The EDB will continue to actively identify sites and VSP for reprovisioning and conduct relevant school allocation under the established process with a view to enhancing the teaching and learning environment of the existing schools.

### **Head 710—Computerisation**

#### **8. The number of police officers participating in the Promotion to Sergeant Qualifying Examination each year.**

An average of 2 440 police officers participated in the Promotion to Sergeant Qualifying Examination in each of the past three years. The number of candidates in 2019 was 2 712.



位置圖  
LOCATION PLAN

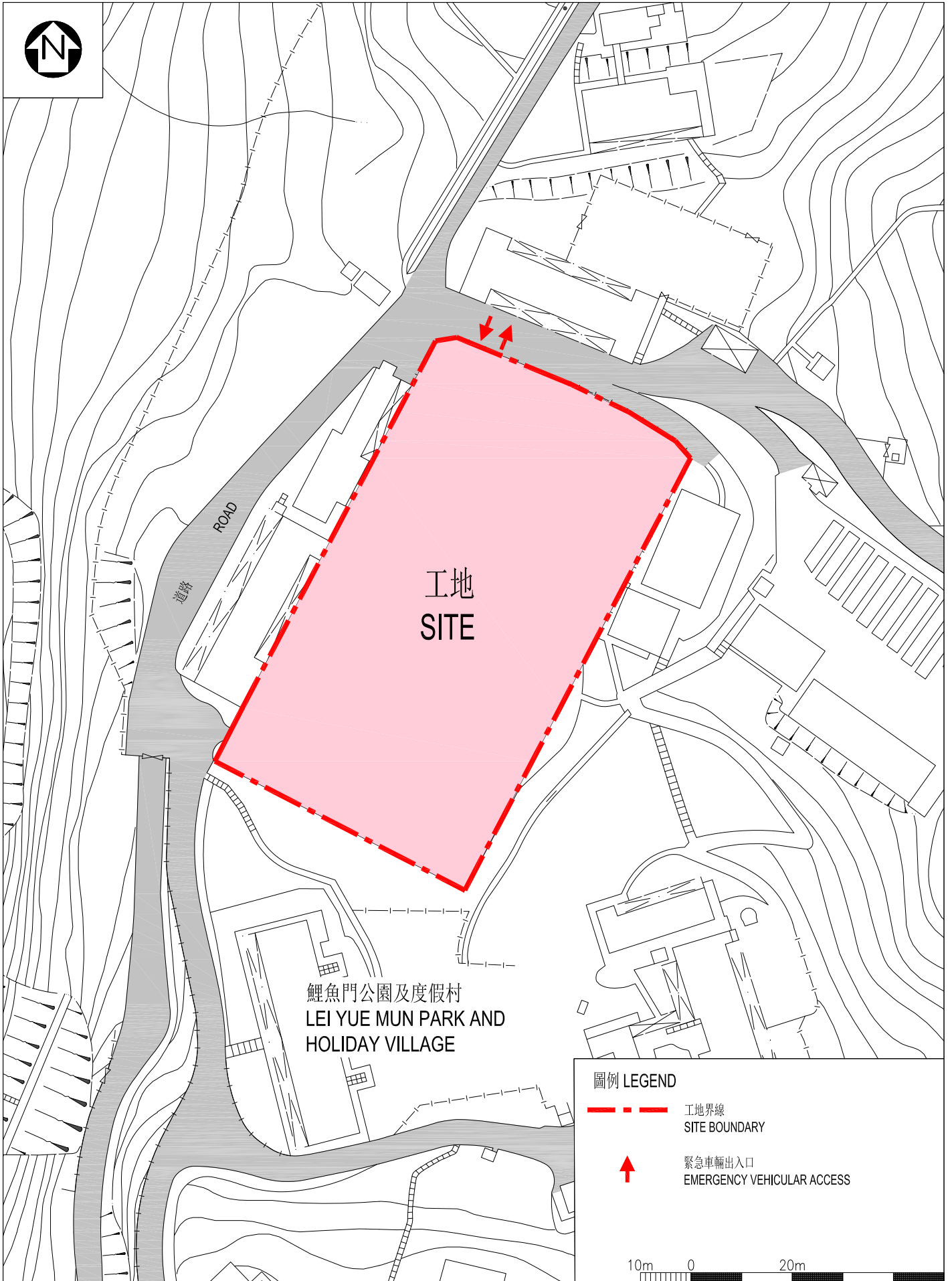
上鯉魚門公園及度假村的籃球場興建臨時檢疫營舍  
Construction of Temporary Quarantine Camps at  
Basketball Court, Upper Lei Yue Mun Park and Holiday Village,  
Chai Wan

比例 Scale:  
1 : 5000 (A4)



ARCHITECTURAL  
SERVICES  
DEPARTMENT 建築署





工地平面圖  
SITE PLAN

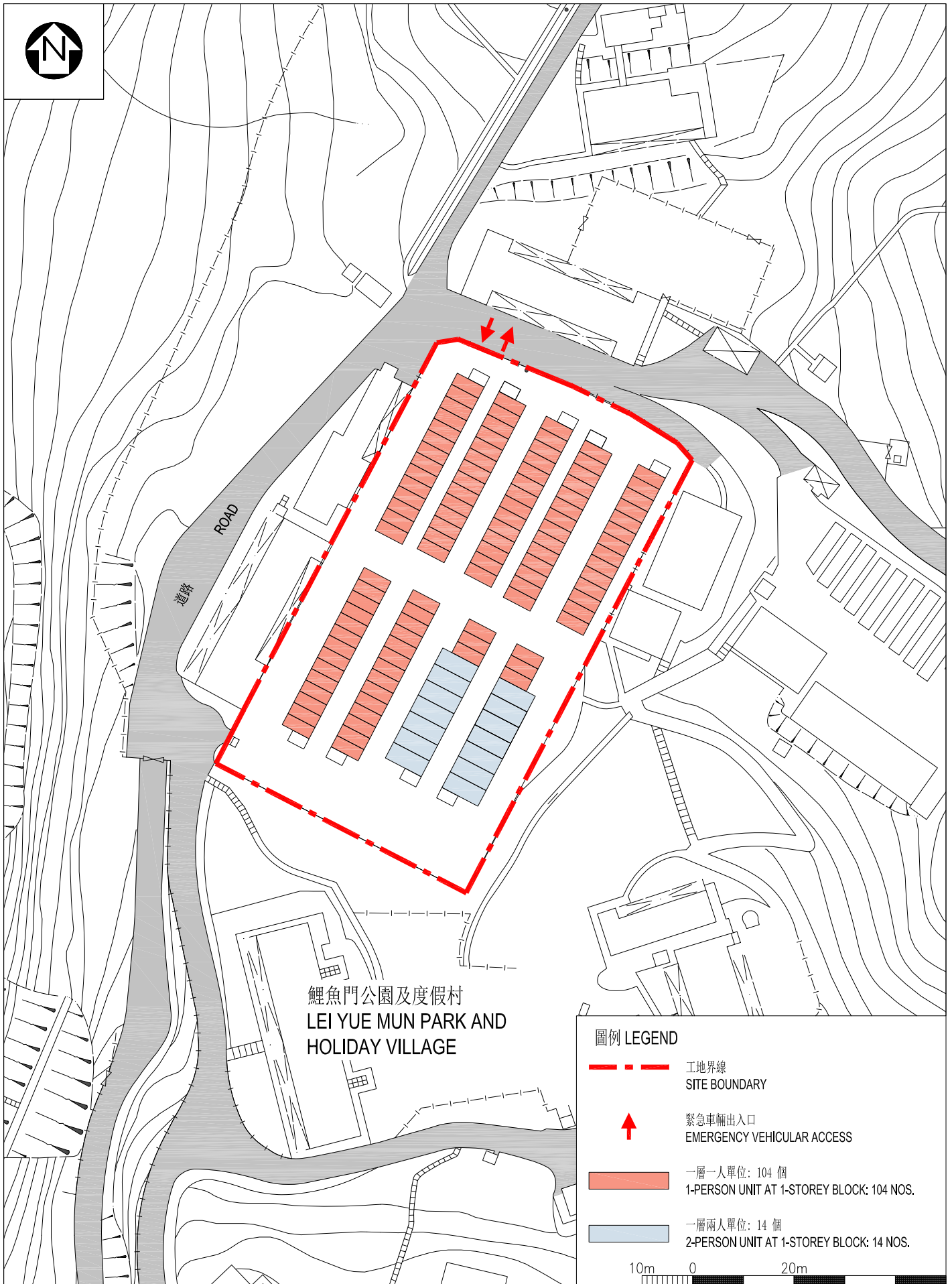
上鯉魚門公園及度假村的籃球場興建臨時檢疫營舍  
Construction of Temporary Quarantine Camps at  
Basketball Court, Upper Lei Yue Mun Park and Holiday Village,  
Chai Wan

比例 Scale:  
1 : 1000 (A4)







ARCHITECTURAL  
SERVICES  
DEPARTMENT 建築署





鯉魚門公園及度假村  
LEI YUE MUN PARK AND  
HOLIDAY VILLAGE

圖例 LEGEND

-  工地界線  
SITE BOUNDARY
-  緊急車輛出入口  
EMERGENCY VEHICULAR ACCESS
-  一層一人單位: 104 個  
1-PERSON UNIT AT 1-STOREY BLOCK: 104 NOS.
-  一層兩人單位: 14 個  
2-PERSON UNIT AT 1-STOREY BLOCK: 14 NOS.

10m 0 20m

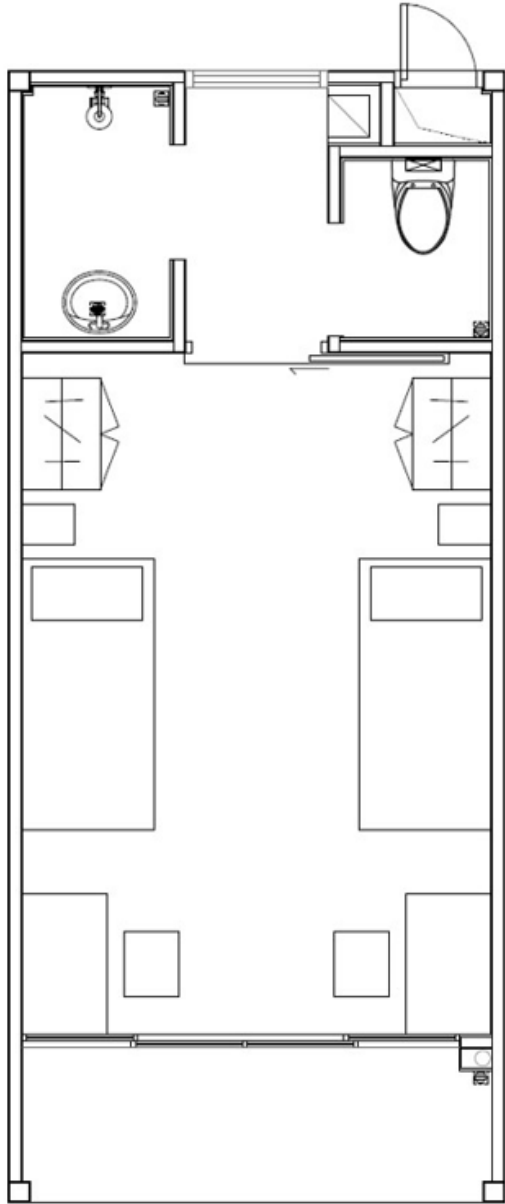
設計平面圖  
LAYOUT PLAN

上鯉魚門公園及度假村的籃球場興建臨時檢疫營舍  
Construction of Temporary Quarantine Camps at  
Basketball Court, Upper Lei Yue Mun Park and Holiday Village,  
Chai Wan

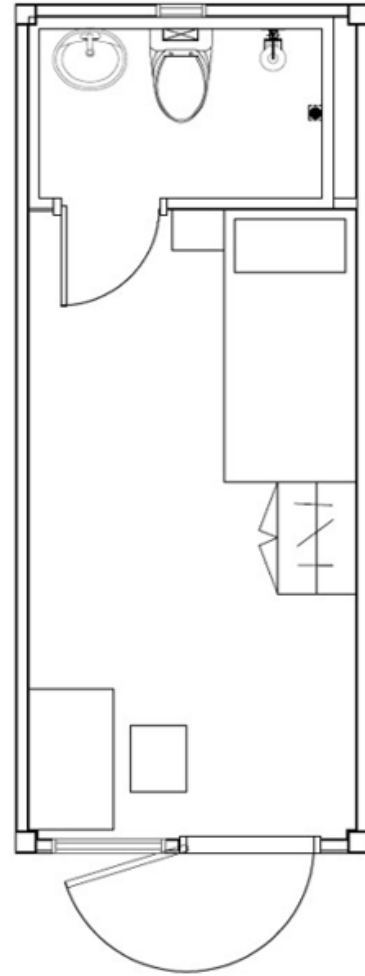
比例 Scale:  
1 : 1000 (A4)



ARCHITECTURAL  
SERVICES  
DEPARTMENT 建築署



兩人單位  
2-PERSON UNIT



一人單位  
1-PERSON UNIT

標準單位設計圖  
TYPICAL UNIT  
LAYOUT PLAN

上鯉魚門公園及度假村的籃球場興建臨時檢疫營舍  
Construction of Temporary Quarantine Camps at  
Basketball Court, Upper Lei Yue Mun Park and Holiday Village,  
Chai Wan

比例 Scale:  
N/A



ARCHITECTURAL  
SERVICES  
DEPARTMENT 建築署



完工照片  
COMPLETION  
PHOTO

上鯉魚門公園及度假村的籃球場興建臨時檢疫營舍  
Construction of Temporary Quarantine Camps at  
Basketball Court, Upper Lei Yue Mun Park and Holiday Village,  
Chai Wan

比例 Scale:  
N/A



ARCHITECTURAL  
SERVICES  
DEPARTMENT 建築署





兩人單位  
2-PERSON UNIT



一人單位  
1-PERSON UNIT

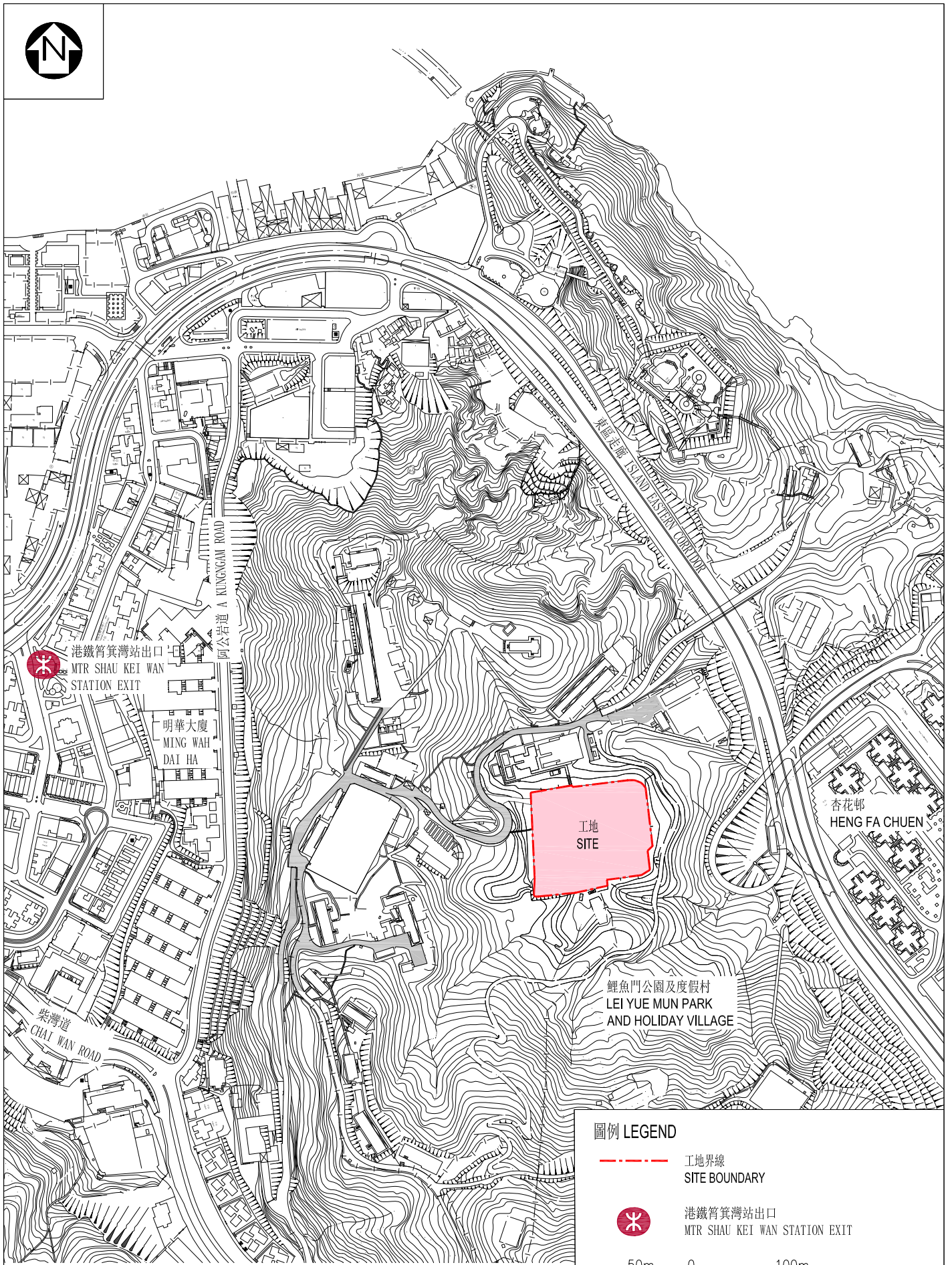
室內照片  
INTERIOR PHOTO

上鯉魚門公園及度假村的籃球場興建臨時檢疫營舍  
Construction of Temporary Quarantine Camps at  
Basketball Court, Upper Lei Yue Mun Park and Holiday Village,  
Chai Wan

比例 Scale:  
N/A



ARCHITECTURAL  
SERVICES  
DEPARTMENT 建築署



位置圖  
LOCATION PLAN

下鯉魚門公園及度假村的足球場興建臨時檢疫營舍  
Construction of Temporary Quarantine Camps at  
Football Pitch, Lower Lei Yue Mun Park and Holiday Village,  
Chai Wan

比例 Scale:  
1 : 5000 (A4)

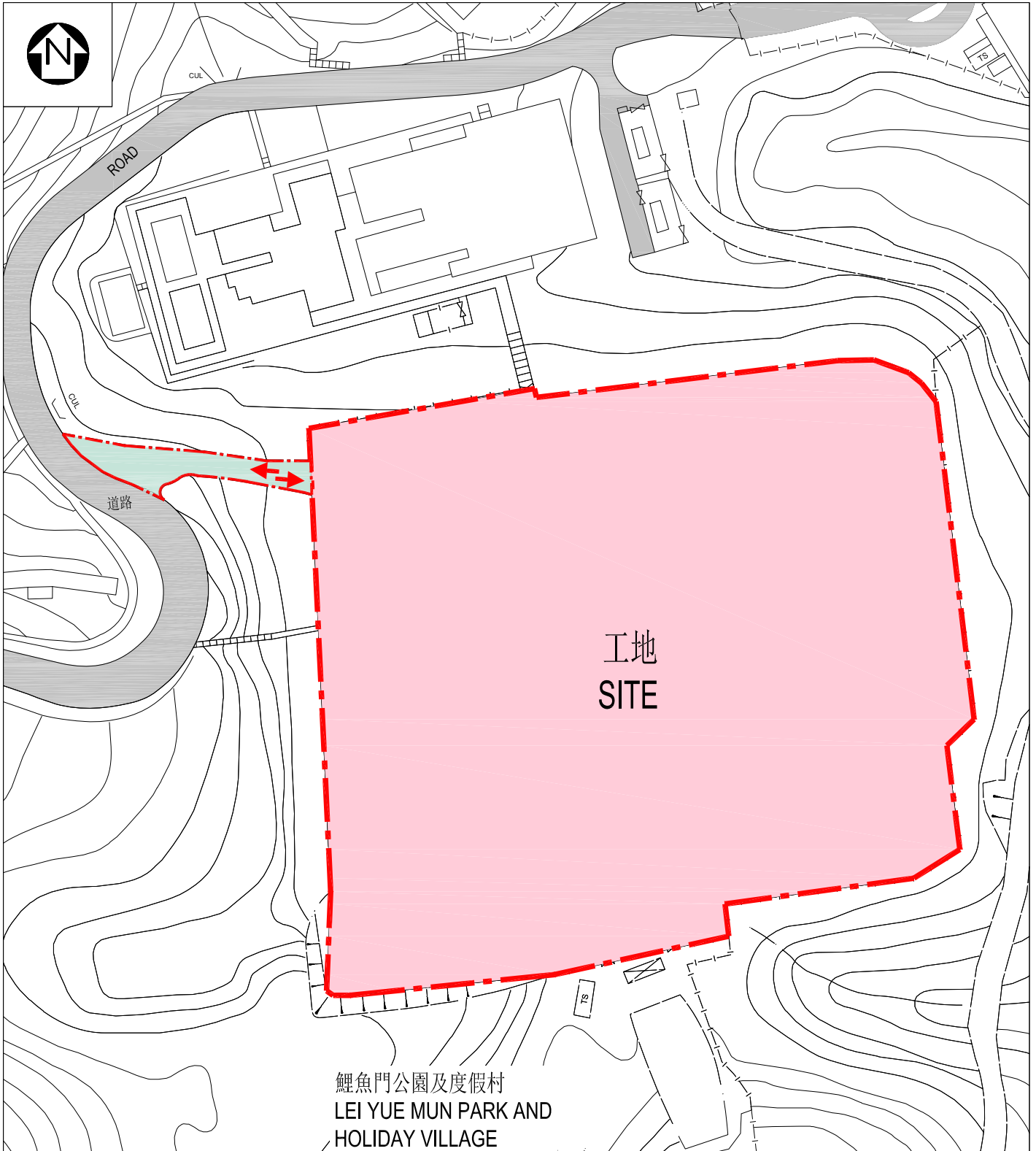
圖例 LEGEND

-  工地界線  
SITE BOUNDARY
-  港鐵筲箕灣站出口  
MTR SHAU KEI WAN STATION EXIT

50m 0 100m



ARCHITECTURAL  
SERVICES  
DEPARTMENT 建築署



鯉魚門公園及度假村  
LEI YUE MUN PARK AND  
HOLIDAY VILLAGE

圖例 LEGEND

-  工地界線  
SITE BOUNDARY
-  緊急車輛出入口  
EMERGENCY VEHICULAR ACCESS
-  道路擴闊工程  
ROAD WIDENIGN WORKS

10m 0 20m

工地平面圖  
SITE PLAN

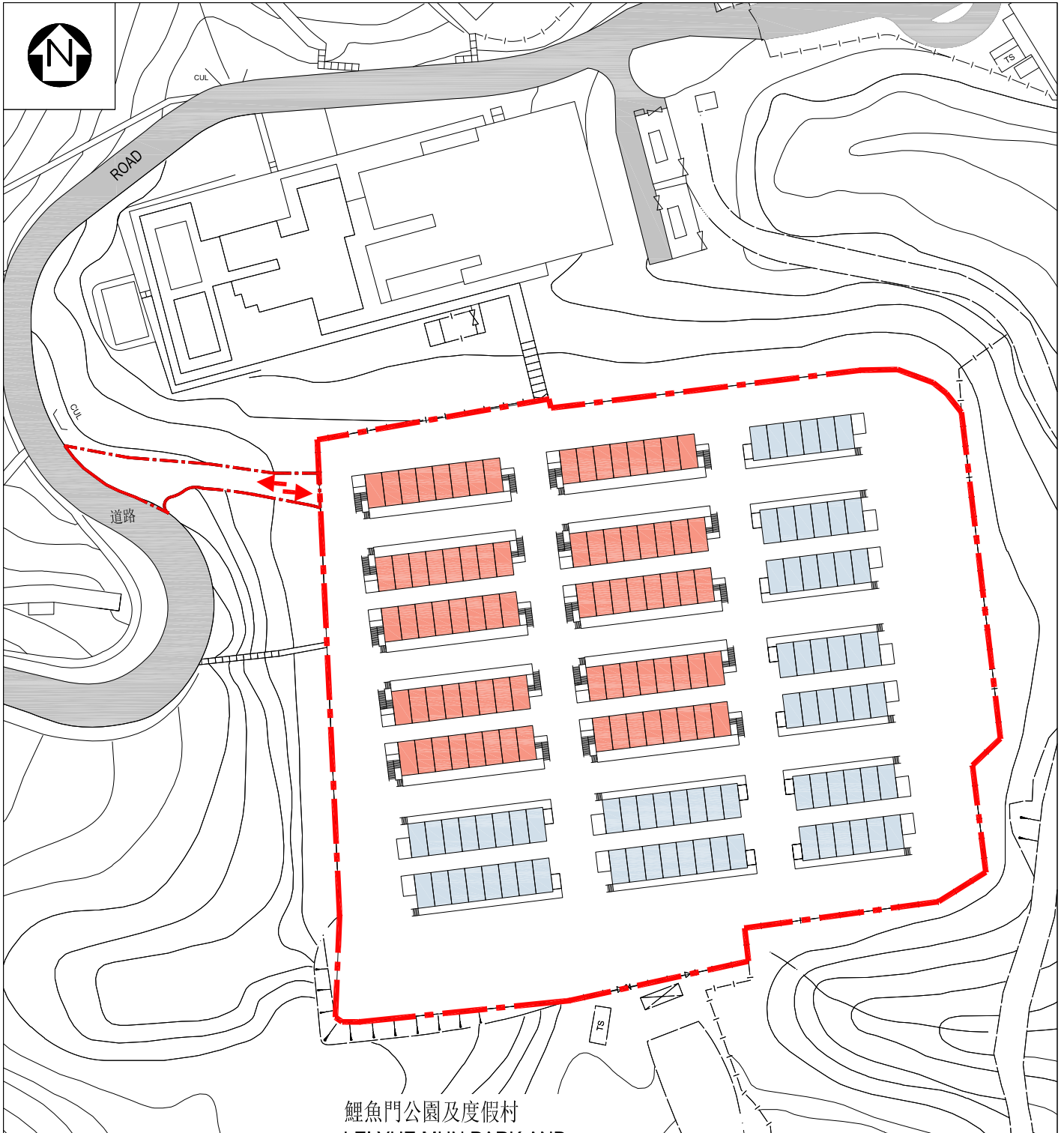
下鯉魚門公園及度假村的足球場興建臨時檢疫營舍  
Construction of Temporary Quarantine Camps at  
Football Pitch, Lower Lei Yue Mun Park and Holiday Village,  
Chai Wan

比例 Scale:  
1 : 1000 (A4)







ARCHITECTURAL  
SERVICES  
DEPARTMENT 建築署





鯉魚門公園及度假村  
LEI YUE MUN PARK AND  
HOLIDAY VILLAGE

圖例 LEGEND

-  工地界線  
SITE BOUNDARY
-  緊急車輛出入口  
EMERGENCY VEHICULAR ACCESS
-  兩層一人單位: 160 個  
1-PERSON UNIT AT 2-STOREY BLOCK: 160 NOS.
-  一層一人單位: 74 個  
1-PERSON UNIT AT 1-STOREY BLOCK: 74 NOS.

10m 0 20m

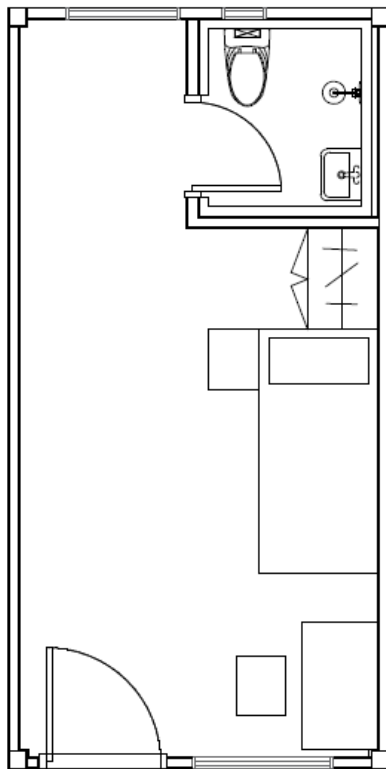
設計平面圖  
LAYOUT PLAN

下鯉魚門公園及度假村的足球場興建臨時檢疫營舍  
Construction of Temporary Quarantine Camps at  
Football Pitch, Lower Lei Yue Mun Park and Holiday Village,  
Chai Wan

比例 Scale:  
1 : 1000 (A4)



ARCHITECTURAL  
SERVICES  
DEPARTMENT 建築署



一人單位  
1-PERSON UNIT

標準單位設計圖  
TYPICAL UNIT  
LAYOUT PLAN

下鯉魚門公園及度假村的足球場興建臨時檢疫營舍  
Construction of Temporary Quarantine Camps at  
Football Pitch, Lower Lei Yue Mun Park and Holiday Village,  
Chai Wan

比例 Scale:  
N/A



ARCHITECTURAL  
SERVICES  
DEPARTMENT 建築署





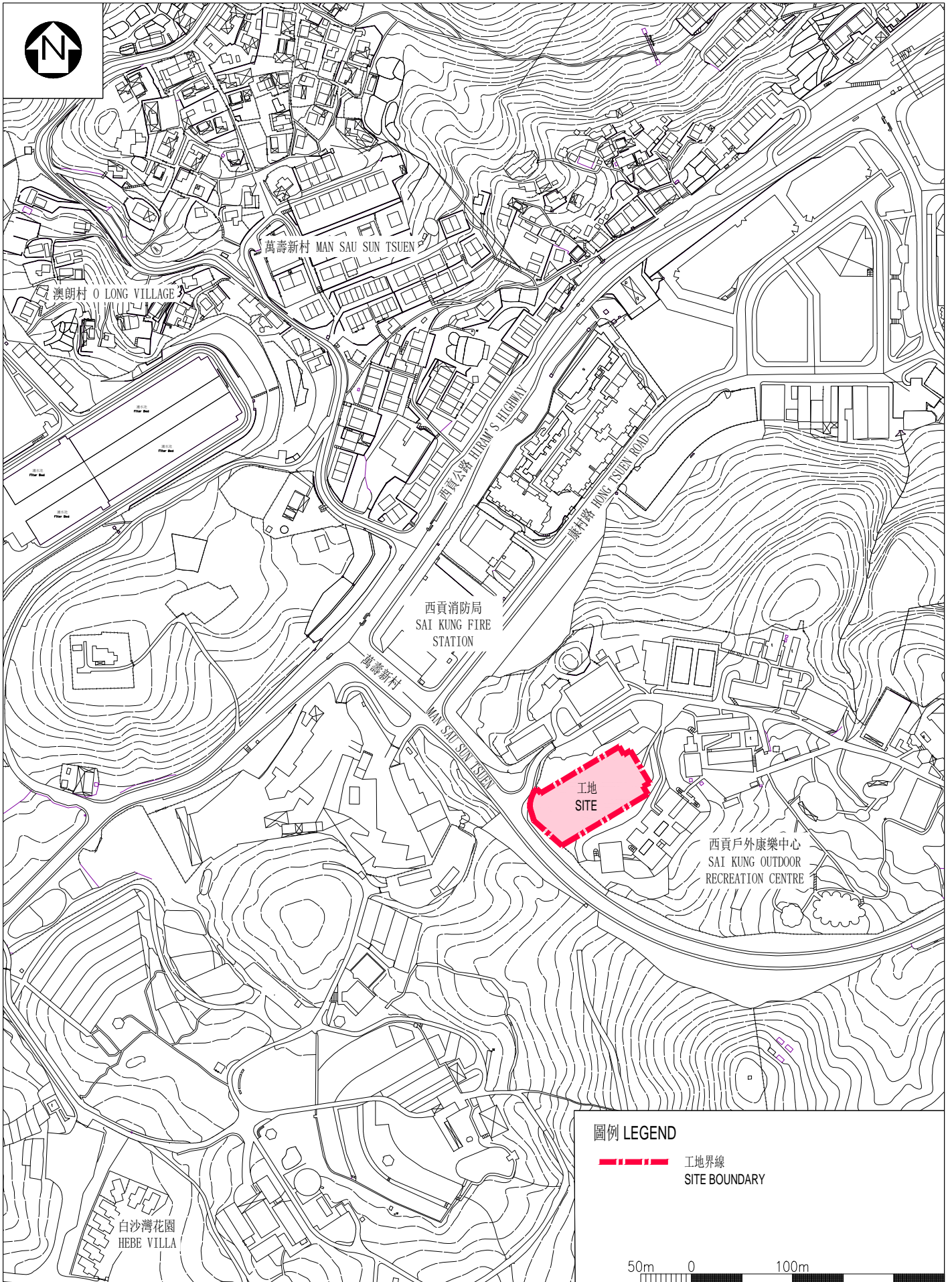
構思透視圖  
**PERSPECTIVE VIEW**  
 (ARTIST'S  
 IMPRESSION)

下鯉魚門公園及度假村的足球場興建臨時檢疫營舍  
 Construction of Temporary Quarantine Camps at  
 Football Pitch, Lower Lei Yue Mun Park and Holiday Village,  
 Chai Wan

比例 Scale:  
 N/A







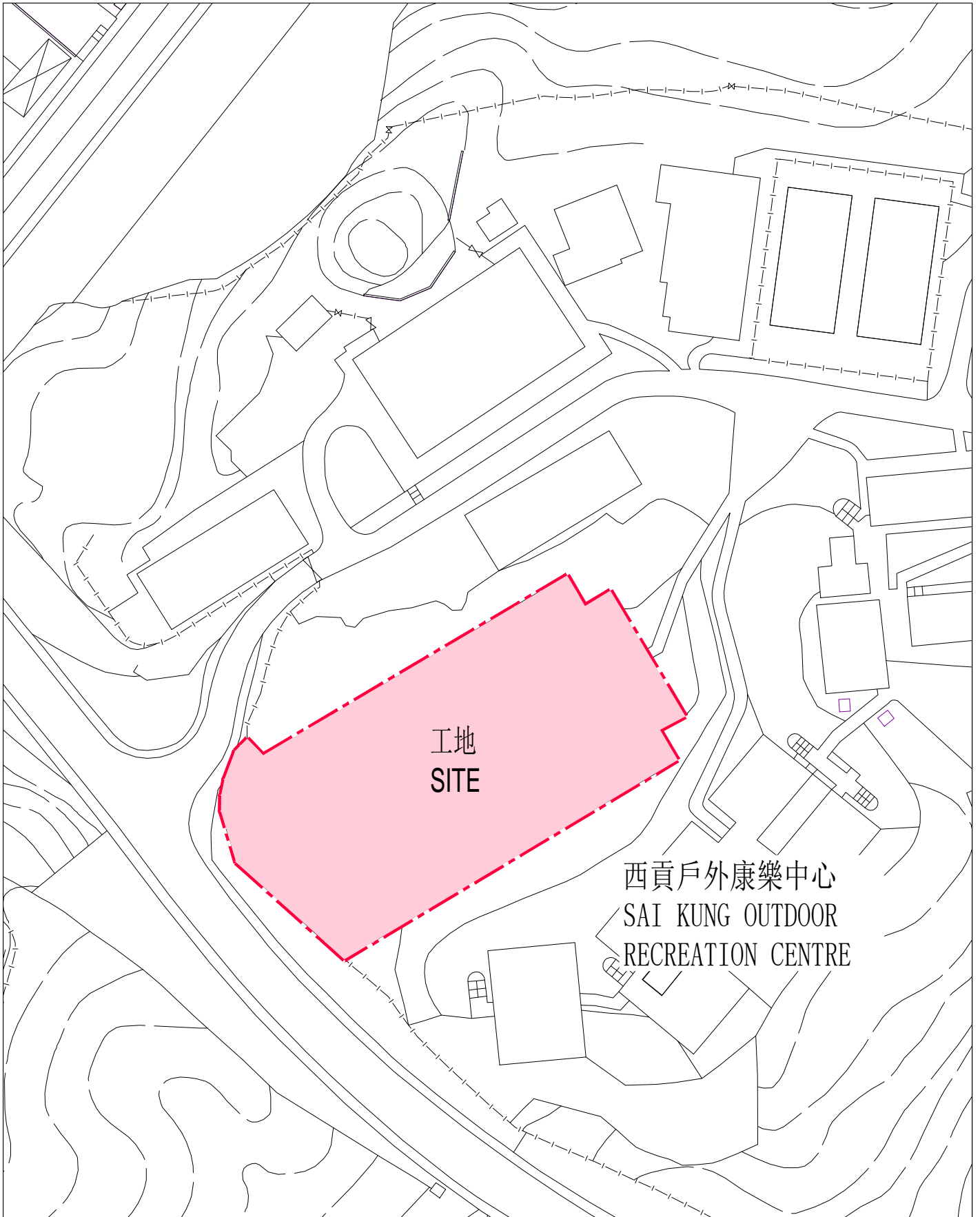
位置圖  
LOCATION PLAN

西貢戶外康樂中心的小型足球場興建臨時檢疫營舍  
Construction of Temporary Quarantine Camps at  
Mini Soccer Pitch of Sai Kung Outdoor Recreation Centre

Scale:  
1 : 5000 (A4)



ARCHITECTURAL  
SERVICES  
DEPARTMENT 建築署



工地  
SITE

西貢戶外康樂中心  
SAI KUNG OUTDOOR  
RECREATION CENTRE

圖例 LEGEND



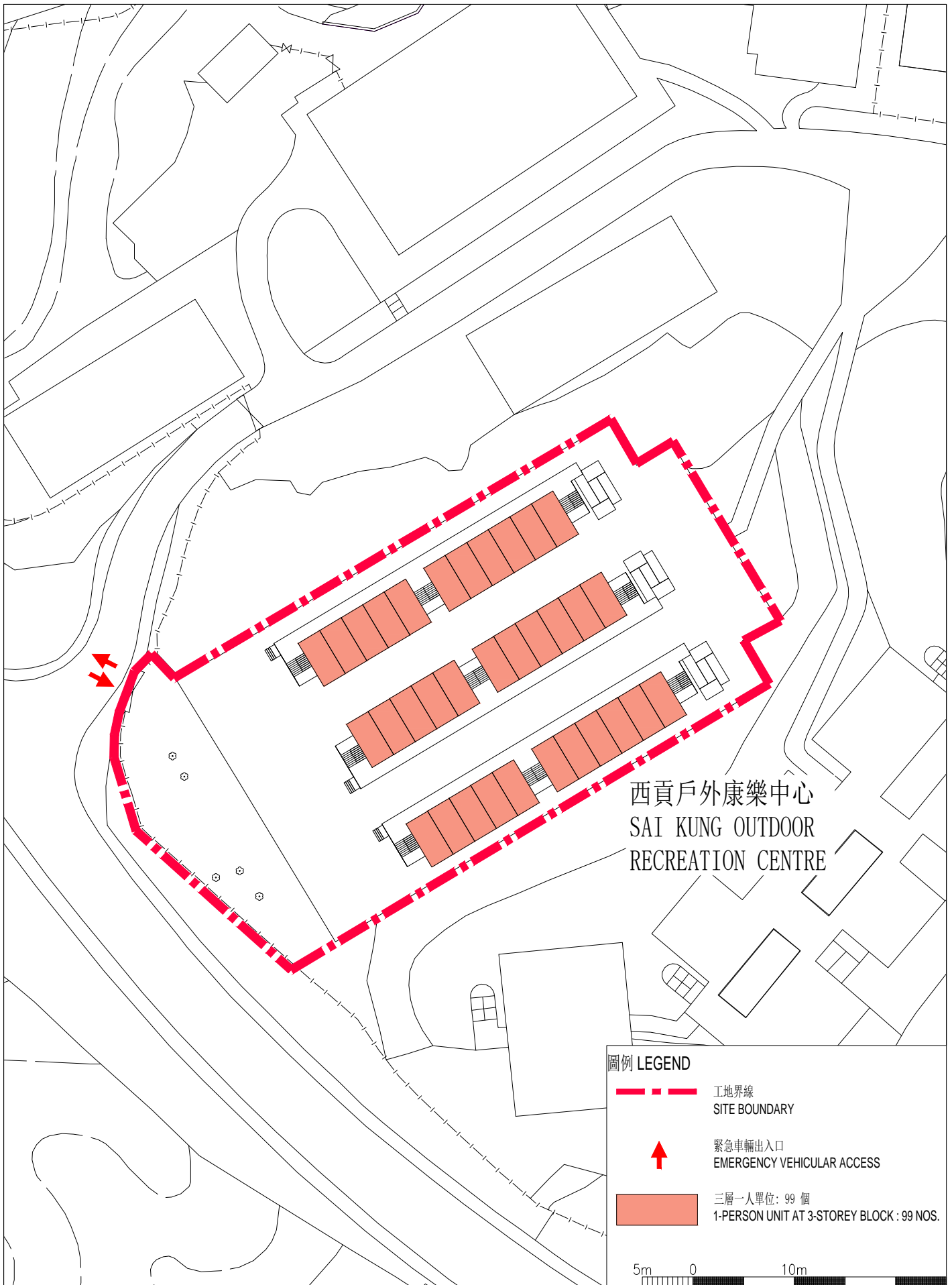
工地平面圖  
SITE PLAN

西貢戶外康樂中心的小型足球場興建臨時檢疫營舍  
Construction of Temporary Quarantine Camps at  
Mini Soccer Pitch of Sai Kung Outdoor Recreation Centre

Scale:  
1 : 800 (A4)



ARCHITECTURAL  
SERVICES  
DEPARTMENT 建築署

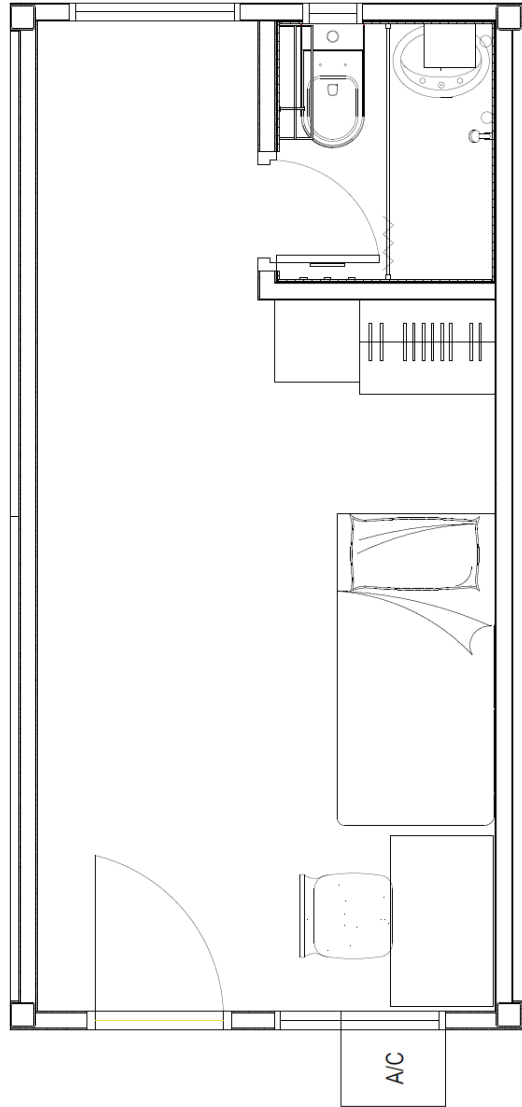


設計平面圖  
LAYOUT PLAN

西貢戶外康樂中心的小型足球場興建臨時檢疫營舍  
Construction of Temporary Quarantine Camps at  
Mini Soccer Pitch of Sai Kung Outdoor Recreation Centre

Scale:  
1 : 600 (A4)

 ARCHITECTURAL  
SERVICES  
DEPARTMENT 建築署



一人單位  
1-PERSON UNIT





構思透視圖  
PERSPECTIVE VIEW  
(ARTIST'S  
IMPRESSION)

西貢戶外康樂中心的小型足球場興建臨時檢疫營舍  
Construction of Temporary Quarantine Camps at  
Mini Soccer Pitch of Sai Kung Outdoor Recreation Centre

 ARCHITECTURAL  
SERVICES  
DEPARTMENT 建築署



林村郊野公園  
LAM TSUEN  
COUNTRY PARK

泥頭尖  
LAI TAU TSIM

八鄉少年警訊  
永久活動中心  
JPC PERMANENT  
ACTIVITY CENTRE

亞公田  
A KUNG TIN

圖例 LEGEND

 工地界線  
SITE BOUNDARY

25m 0 50m

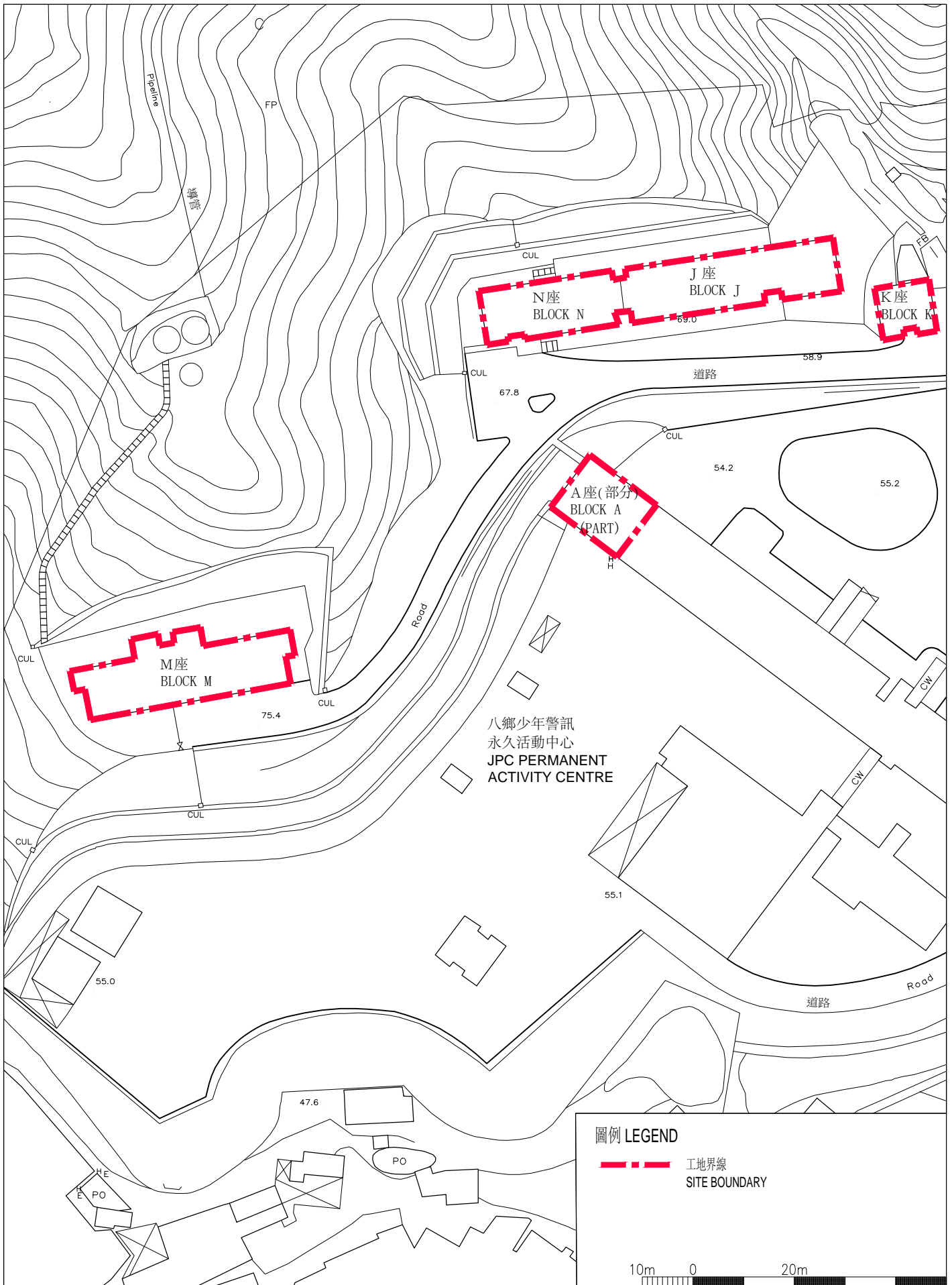
位置圖  
LOCATION PLAN

八鄉少年警訊永久活動中心的  
翻修現有宿舍作臨時檢疫營舍  
Refurbishment of Existing Quarters,  
JPC Permanent Activity Centre at Pat Heung,  
to Temporary Quarantine Camps

Scale:  
1 : 2500 (A4)



ARCHITECTURAL  
SERVICES  
DEPARTMENT 建築署



工地平面圖  
SITE PLAN

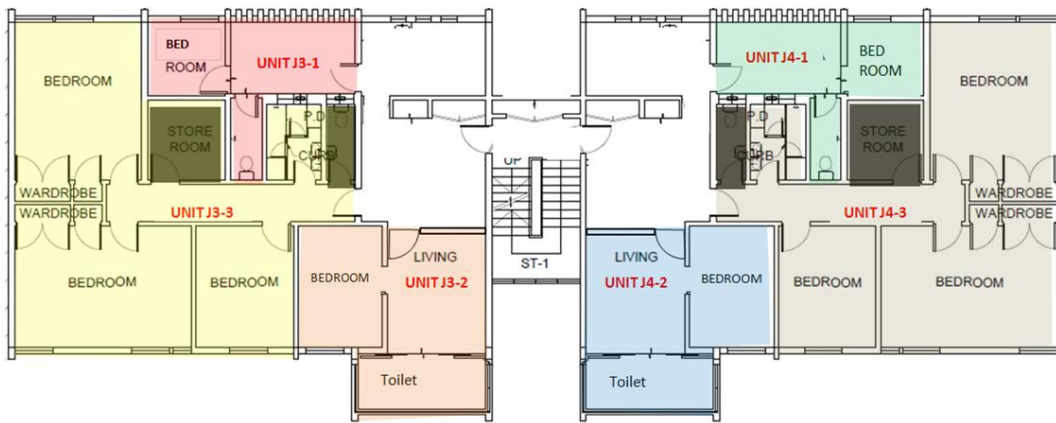
八鄉少年警訊永久活動中心的  
翻修現有宿舍作臨時檢疫營舍  
Refurbishment of Existing Quarters,  
JPC Permanent Activity Centre at Pat Heung,  
to Temporary Quarantine Camps

Scale:  
1 : 1000 (A4)



ARCHITECTURAL  
SERVICES  
DEPARTMENT 建築署





J座 - 1樓  
Block J - 1/F

平面圖 - J座  
TYPICAL LAYOUT  
(BLOCK J)

八鄉少年警訊永久活動中心的  
翻修現有宿舍作臨時檢疫營舍  
Refurbishment of Existing Quarters,  
JPC Permanent Activity Centre at Pat Heung,  
to Temporary Quarantine Camps

Scale:  
N.T.S. (A4)



ARCHITECTURAL  
SERVICES  
DEPARTMENT 建築署



圖例 LEGEND

 進行翻修工程的現有宿舍  
EXISTING QUARTERS FOR REFURBISHMENT

工地照片  
SITE PHOTO

八鄉少年警訊永久活動中心的  
翻修現有宿舍作臨時檢疫營舍  
Refurbishment of Existing Quarters,  
JPC Permanent Activity Centre at Pat Heung,  
to Temporary Quarantine Camps

比例 Scale:  
N/A

 ARCHITECTURAL  
SERVICES  
DEPARTMENT 建築署



室內照片  
INTERIOR PHOTO

八鄉少年警訊永久活動中心的  
翻修現有宿舍作臨時檢疫營舍  
Refurbishment of Existing Quarters,  
JPC Permanent Activity Centre at Pat Heung,  
to Temporary Quarantine Camps

Scale:  
N.T.S. (A4)



ARCHITECTURAL  
SERVICES  
DEPARTMENT 建築署



**6. Proceeds of lotteries**

- (1) The proceeds of the sale of tickets in a lottery shall be paid into the Lotteries Fund as soon as practicable after the sale of such tickets.
- (2) Sixty per cent, or as close to that proportion as is practicable, of the proceeds of the sale of tickets in a lottery shall be apportioned as prizes in such manner as the Committee, subject to the direction of the Chief Executive, may determine. *(Amended 68 of 1999 s. 3)*
- (3) All expenses arising out of the conduct of a lottery or the operation of the Committee shall be paid out of the Lotteries Fund.
- (4) The Financial Secretary, after making due allowance for any payments which may be outstanding under subsections (2) and (3), may appropriate from the Lotteries Fund moneys for the purpose of financing, by way of grant, loan or advance, the support and development of such social welfare services in Hong Kong as the Chief Executive, after consultation with the Social Welfare Advisory Committee, may approve. *(Amended 66 of 1973 s. 3; 68 of 1999 s. 3)*
- (5) *(Repealed 66 of 1973 s. 3)*
- (6) The Legislative Council may by resolution amend subsection (2) so as to vary the proportion of the proceeds of the sale of tickets in a lottery which is to be apportioned as prizes.

*(Replaced 33 of 1967 s. 3)*

List of Social Welfare Services/ Projects  
[as advised by the Social Welfare Advisory Committee under Section 6(4)  
of the Government Lotteries Ordinance (Ca. 334)]

Family Welfare

- (1) Relief services
- (2) Crèches and nurseries (day and residential) – for children aged 6 and under (including integrated programme and occasional child care service)
- (3) Services for street-sleepers (including day relief centres, shelters and hostels)
- (4) Casework services
- (5) Family life education
- (6) Home help and family aide services
- (7) Foster care service
- (8) Residential care for children over 6 and young persons (including homes, hostels, halfway houses, etc.)
- (9) Small group homes
- (10) Welfare services for drug abusers
- (11) Services for women in need of refuge
- (12) Overseas adoption service
- (13) Post-migration services
- (14) Family activity and resource centres
- (15) Family care demonstration and resource centre(s)

Elderly

- (16) Day care centres for the elderly
- (17) Multi-service centres for the elderly
- (18) Social centres for the elderly
- (19) Holiday centre for the elderly
- (20) Residential care for the elderly (including hostels, transit shelter, homes for the aged, care and attention homes-cum-infirmatory units, etc.)
- (21) Transport service for the elderly
- (22) Outreaching service for the elderly at risk
- (23) Nursing homes

### Young People

- (24) Children and youth centres
- (25) School social work
- (26) Outreaching social work
- (27) Youth groups (including uniformed organizations and miscellaneous group and community services)
- (28) Integrated teams
- (29) Community support service scheme

### Offender

- (30) Social and therapeutic centres for offenders
- (31) Hostels for ex-prisoners
- (32) Crime prevention education

### Rehabilitation

- (33) Education/ training for the disabled (including early education training centres, skills training centres, special schools, etc.)
- (34) Residential/ day care services for the disabled (including hostels, small group homes, care and attention homes, sheltered workshops, day activity centres, etc.)
- (35) Assessment/ stimulation services for the young disabled
- (36) Special child care centres for the disabled (day and residential), (including autistic children programme and occasional child care service)
- (37) Social and recreational centres for the disabled
- (38) Transport services for the disabled
- (39) Technical aids for the disabled
- (40) Parents/ relatives resource centres for disabled
- (41) Community rehabilitation network

### Community Development

- (42) Community halls/ centres
- (43) Neighbourhood level community development projects

### Others

- (44) Social welfare supporting services (including central administration, conference and staff development programme)
- (45) Camps and hostels
- (46) Employment service (including supported employment)
- (47) Self-financing projects providing social welfare and rehabilitation services listed above