



Measures and train service arrangements implemented by the MTR to cope with large scale public order events

LegCo Panel on Transport
Subcommittee on Matters Relating to Railways

December 2019





Repeated Vandalism of MTR facilities

Online Screen Capture

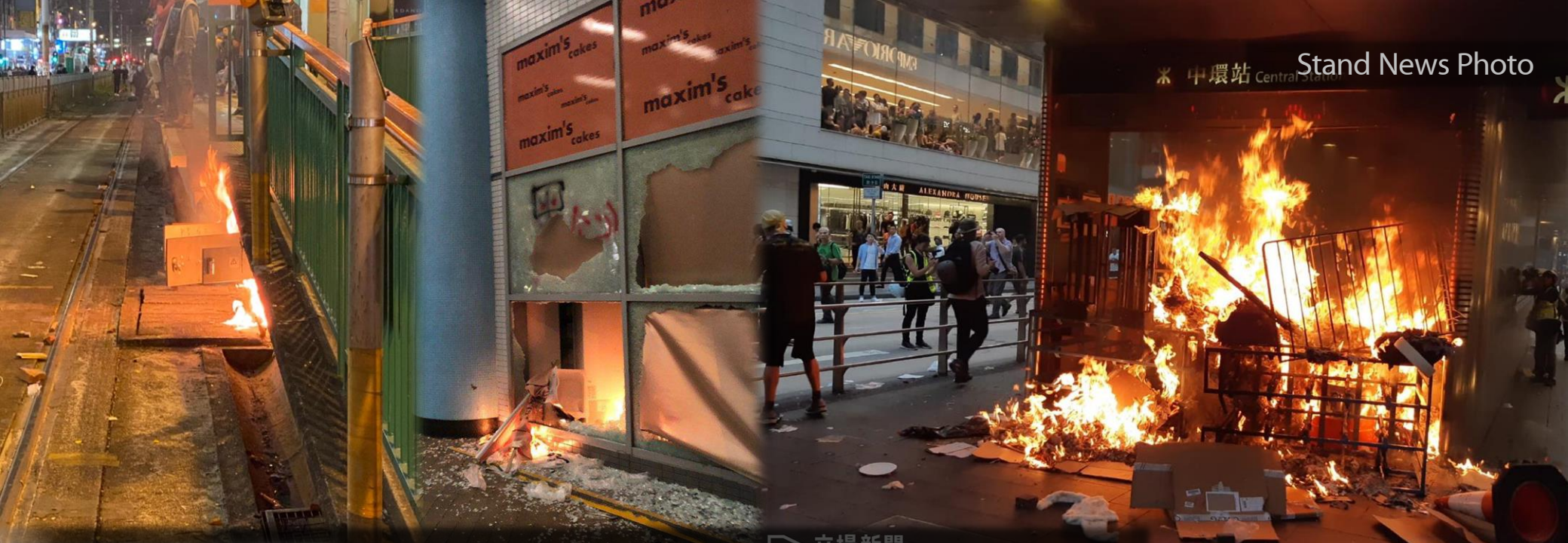


Frontline Staff

Under a lot of Pressure



Repair Works Round the Clock



Petrol Bombs Hurling/Arson >160





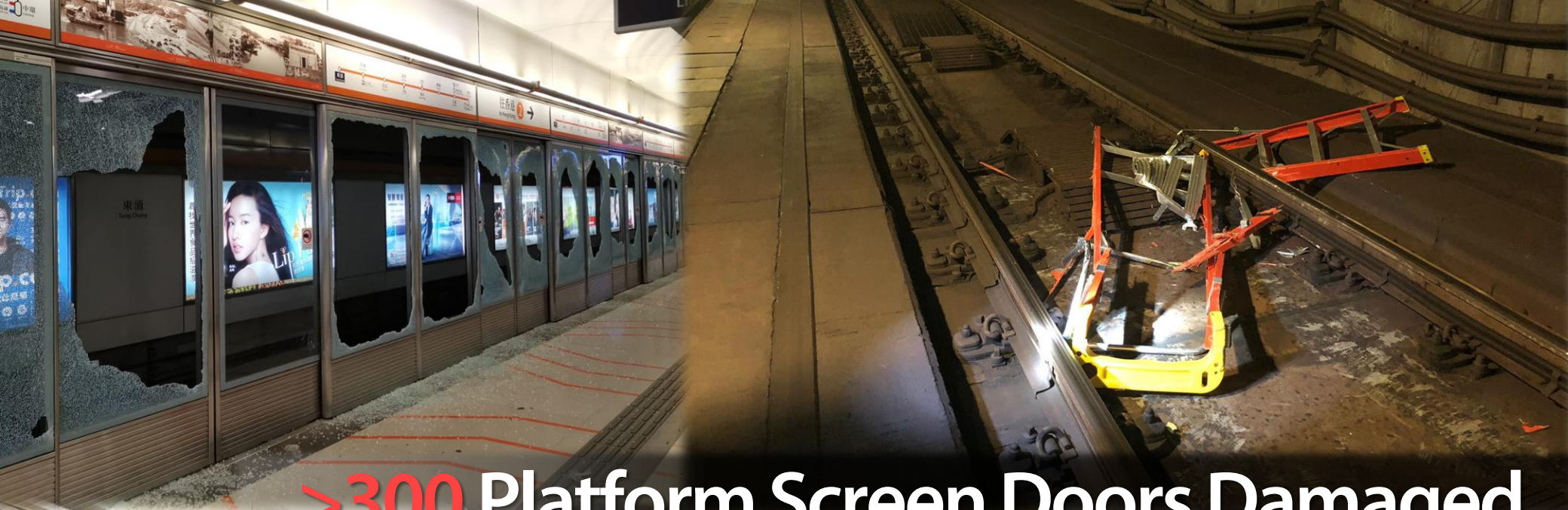
>160 Train Obstruction Cases



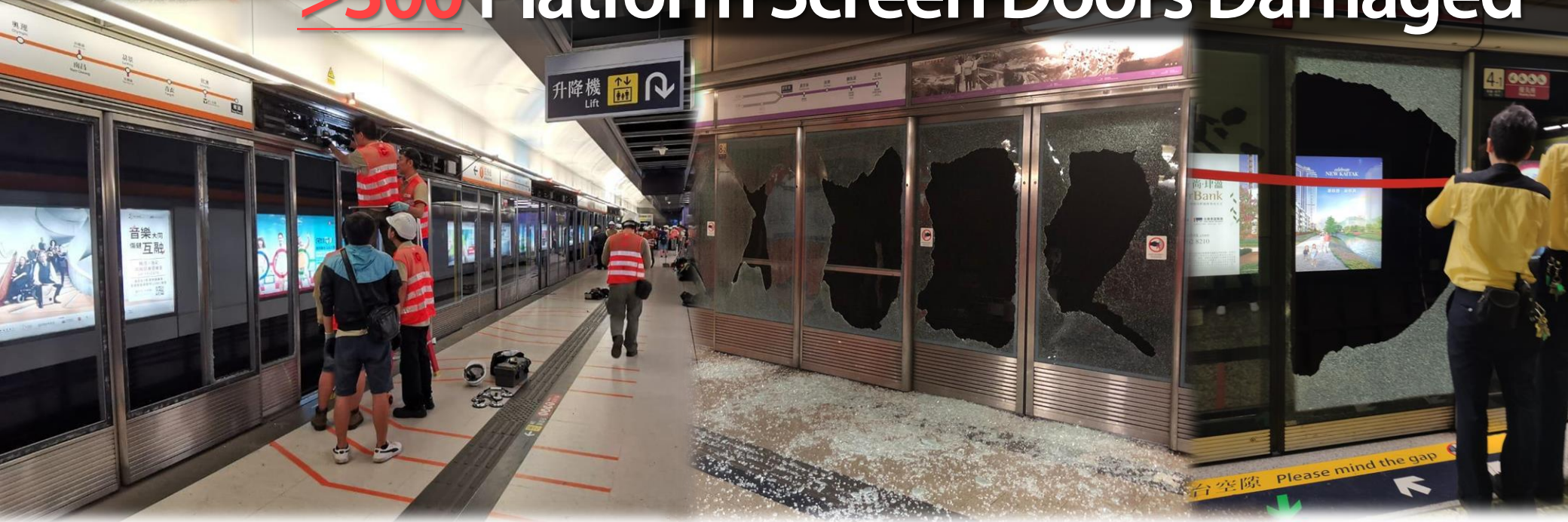


Around 2000 Entry/Exit Gates Damaged



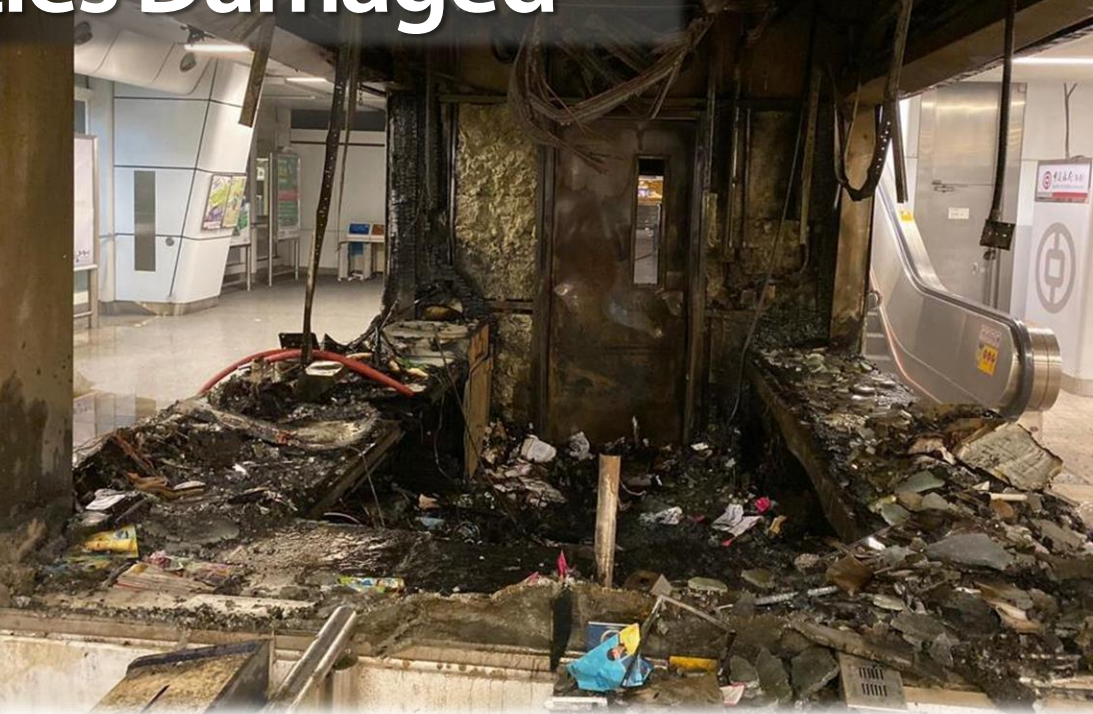


>300 Platform Screen Doors Damaged





>1000 Ticketing Facilities Damaged





>1100 Glass Panels Damaged

70 Trains Damaged





Severe Damage at University Station

Many **facilities** set on fire

Many **trains** set on fire

Tracks, overhead cables damaged

Signaling equipment severely damaged

Information 八達通 增值 推廣項目 協助
Tickets Octopus Add-Value Promotions Assistance



Tremendous Challenges in Repair Work

Limited time, **shortage** of spare parts



Light Rail Severely Damaged

Maintenance staff's safety
need to be considered



Road & LR Facilities Damaged

LR Train Service Affected

Principles Governing Train Service Arrangements During Large Scale POEs



- Strive to maintain railway service under safe conditions
- Assess risks
- Closely liaise with government departments
- Disseminate information promptly

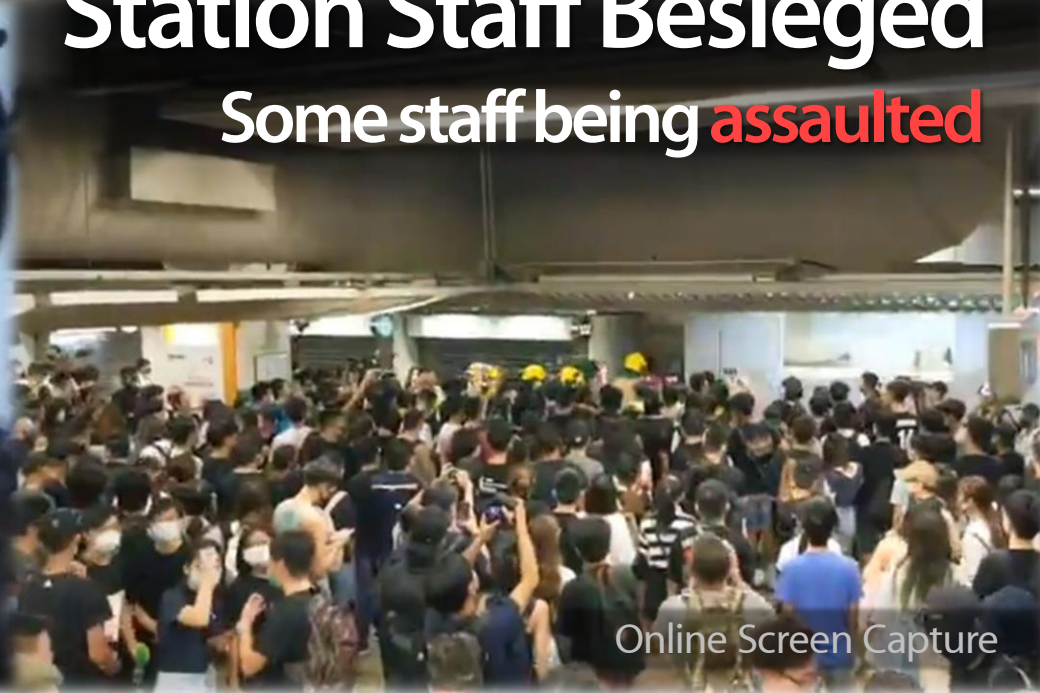
Specific Measures

- Trains bypass individual stations
- Close some entrances/exits or the whole stations
- Temporarily suspend service of railway lines
- End the train service earlier

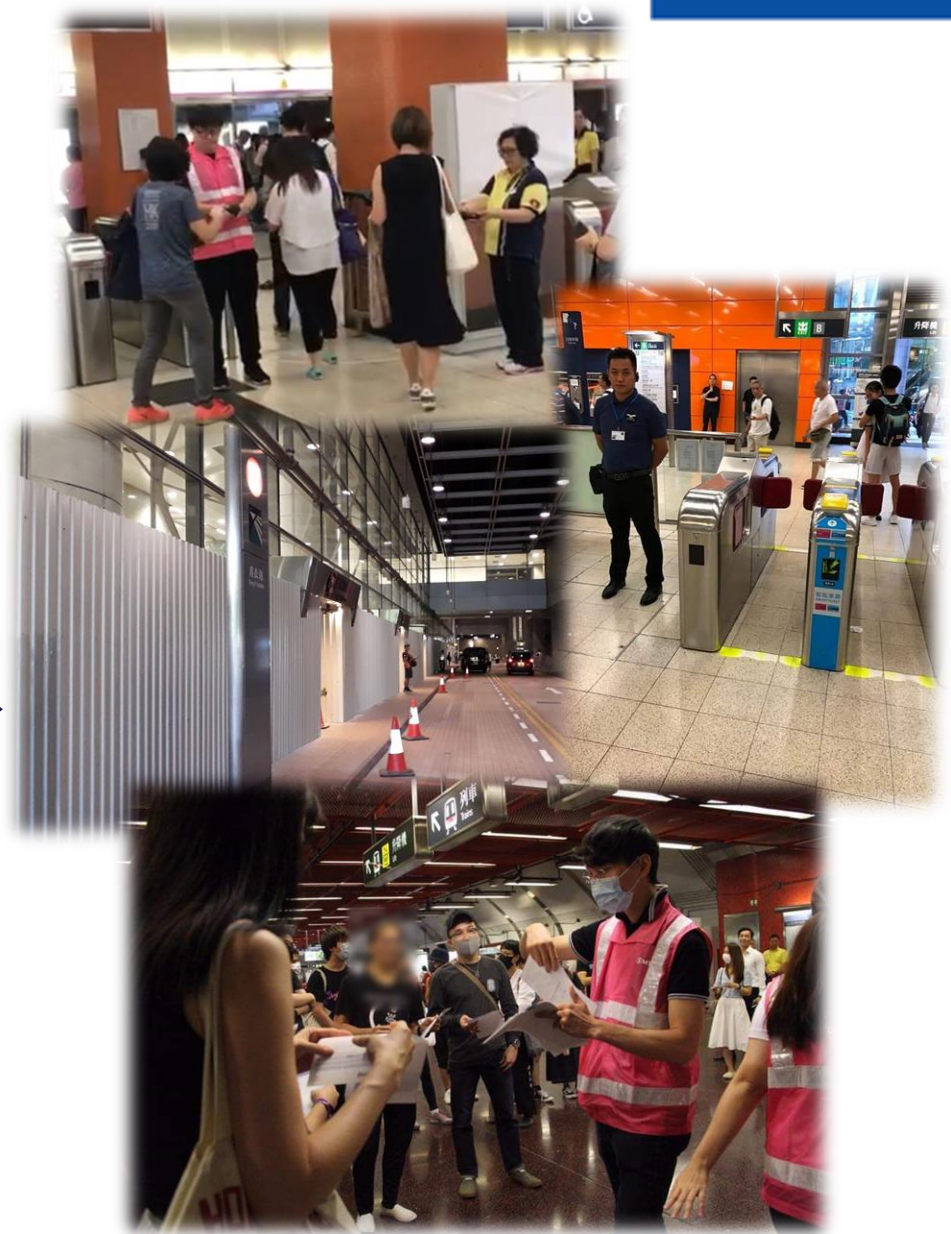


Station Staff Besieged

Some staff being **assaulted**



MTR's Support to Staff





Appreciate the Public's Understanding





Keep Hong Kong Moving



- Thank You -