

立法會發展事務委員會

立法會 CB(1)614/20-21(01)號文件

LC Paper No. CB(1)614/20-21(01)

Panel on Development, Legislative Council

23. 2. 2021

可持續大嶼辦事處的工作進度，及可持續大嶼辦事處、規劃署和路政署鐵路拓展處人員編制建議
以推展和落實與大嶼山發展及保育相關的項目

*Progress of Work by the Sustainable Lantau Office (SLO), and
Staffing Proposals of SLO, Planning Department and
Railway Development Office of Highways Department
for Taking Forward and Implementation of Development and
Conservation Projects related to Lantau*

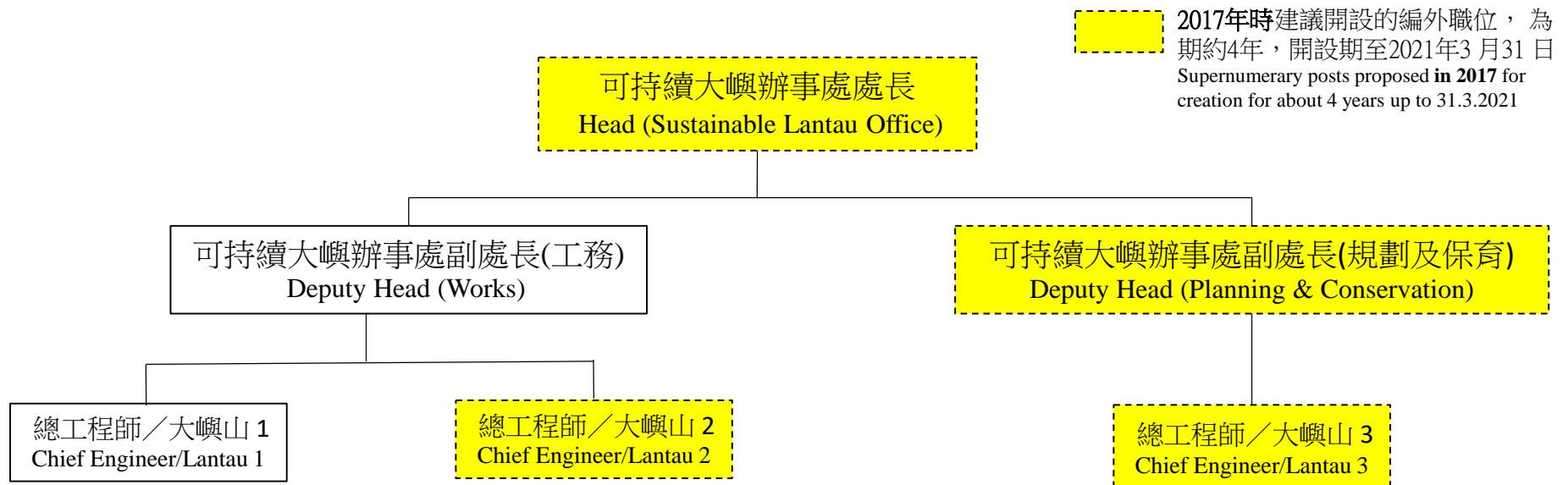


土木工程拓展署
CIVIL ENGINEERING AND
DEVELOPMENT DEPARTMENT

可持續大嶼辦事處
SUSTAINABLE LANTAU OFFICE

土木工程拓展署可持續大嶼辦事處 首長級人員組織圖 (自2017年)

Organisation Chart of the Directorate Staff of Sustainable Lantau Office of Civil Engineering and Development Department (since 2017)



1. 發展項目 Development Projects

東涌東 Tung Chung East

東涌新市鎮擴展

Tung Chung New Town Extension



- 2020年3月 - 約7公頃的土地交付房委會以興建公營房屋
March 2020 - handed over sites (about 7ha) to HKHA for public housing development
- 2020年6月 - 約1.2公頃作商業發展的土地完成
June 2020 - sites (about 1.2ha) for land disposal was made available
- 2020年10月 - 約3公頃的土地交付房委會以興建公營房屋
October 2020 - handed over sites (about 3ha) to HKHA for public housing development

第一階段工地平整與基礎設施工程 First Phase development of the main engineering infrastructure works

工程計劃於2021年年中開展，預計在2024年至2028年分階段完成 Plan to commence the works in mid 2021, with phased completion expected from 2024 to 2028

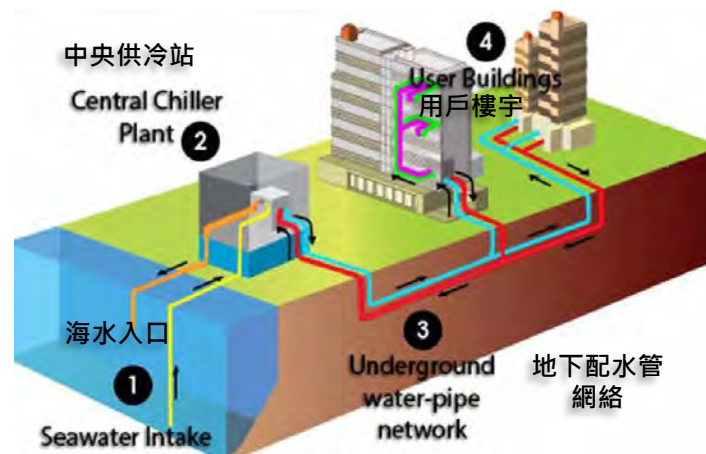
1. 發展項目 - 東涌新市鎮擴展

Development Projects – Tung Chung New Town Extension

- 智慧、環保及具抗禦力的措施
Smart, Green and Resilient Initiatives



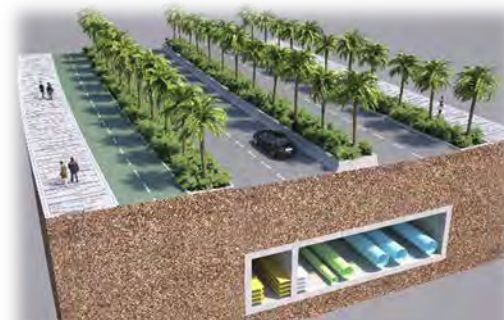
生態海岸線 Eco-shorelines



區域供冷系統
District Cooling System



河畔公園 River Park

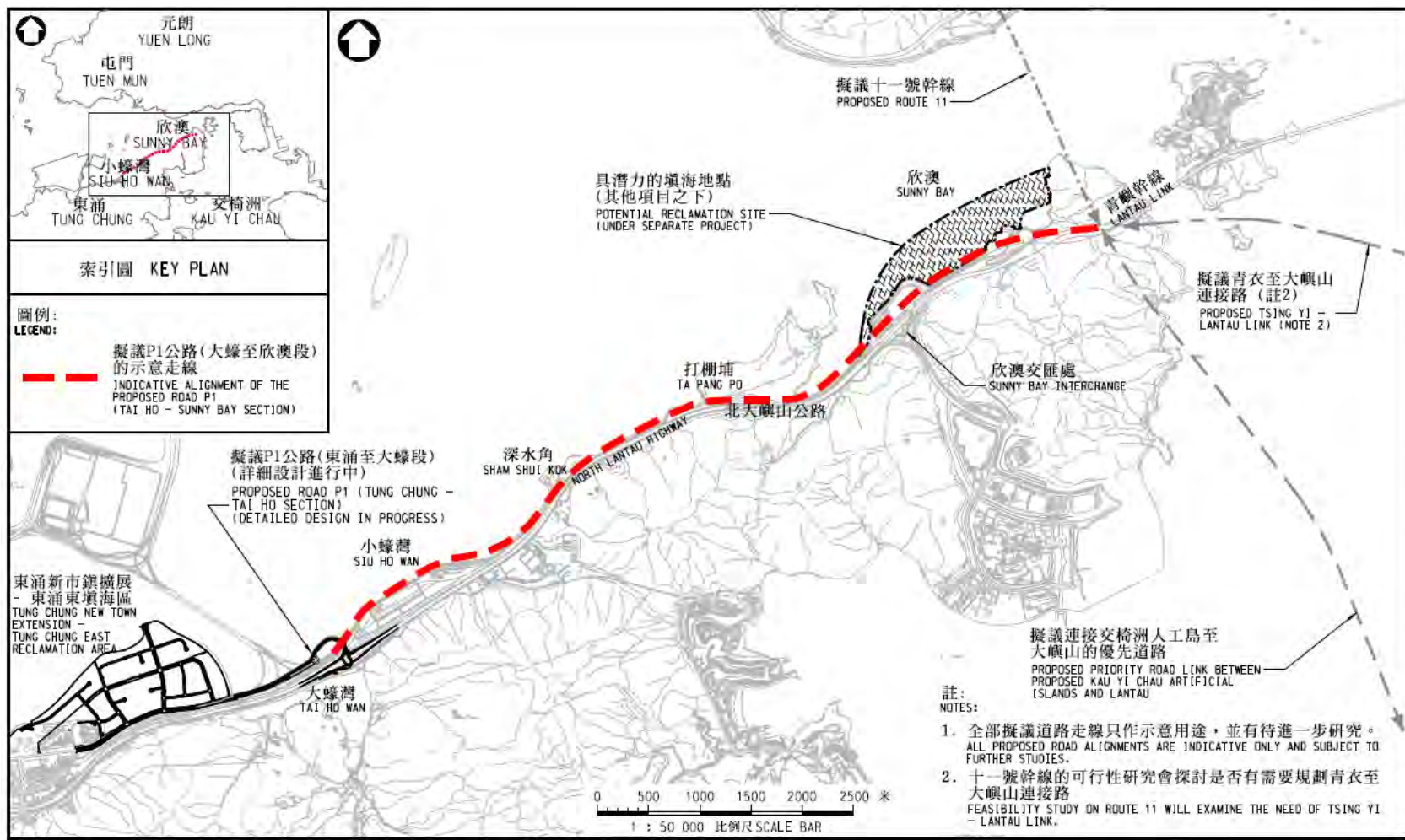


公用設施共同溝
Common Utility Tunnels

1. 發展項目 Development Projects

P1公路(大蠔至欣澳段)的工程研究

Engineering Study on Road P1 (Tai Ho - Sunny Bay Section)



2. 地區改善工程 Local Improvement Works

馬灣涌改善工程 Improvement Works at Ma Wan Chung



美化現有碼頭
Beautify existing pier



美化現有行人天橋
Beautify existing footbridge



美化現有建築物外牆
Beautify existing building exterior

擬議沿岸行人通道
Proposed coastal pedestrian access



更新現有鄉村地圖
Update existing village map

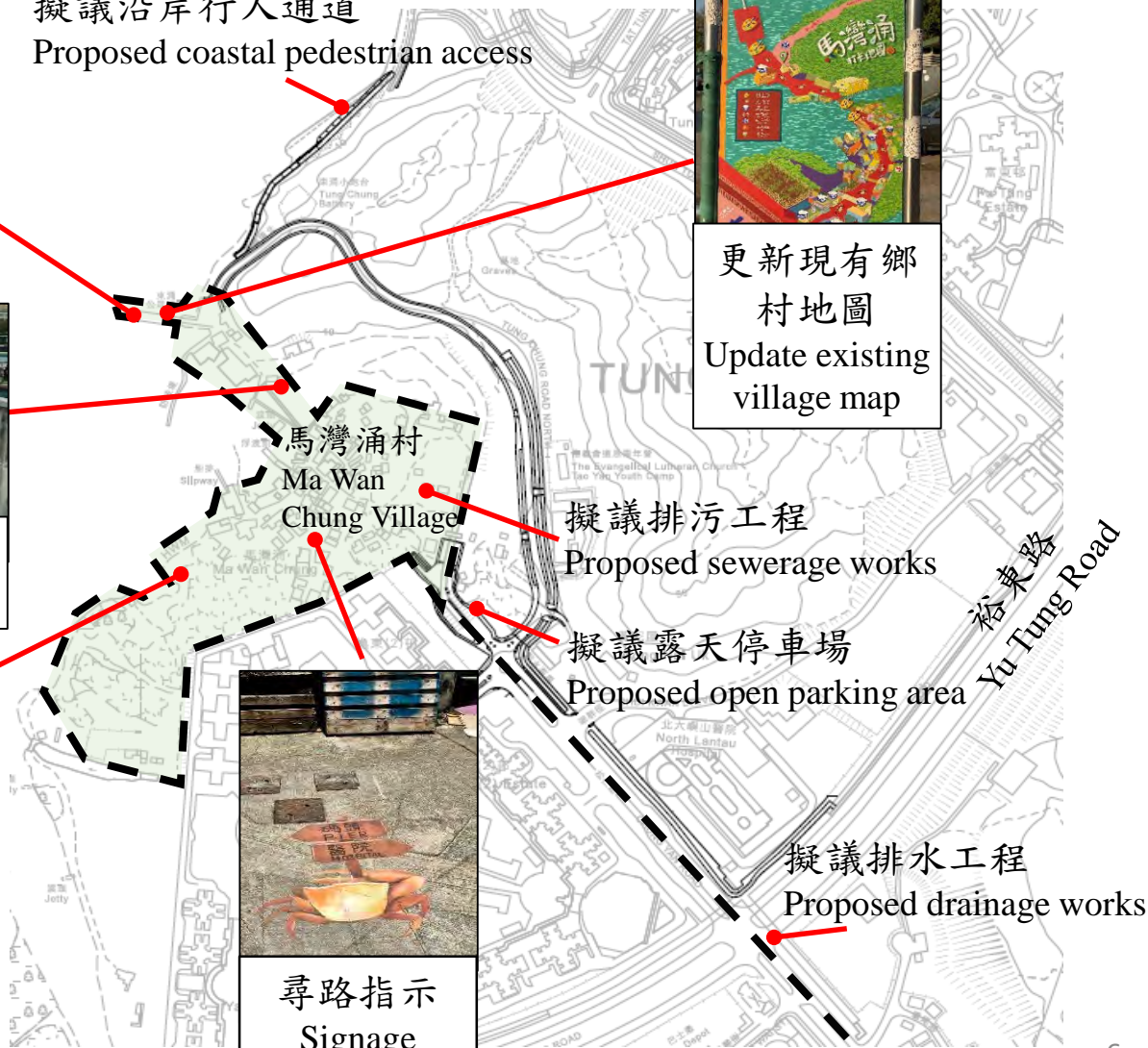
擬議排污工程
Proposed sewerage works

擬議露天停車場
Proposed open parking area

擬議排水工程
Proposed drainage works



尋路指示
Signage



2. 地區改善工程 Local Improvement Works

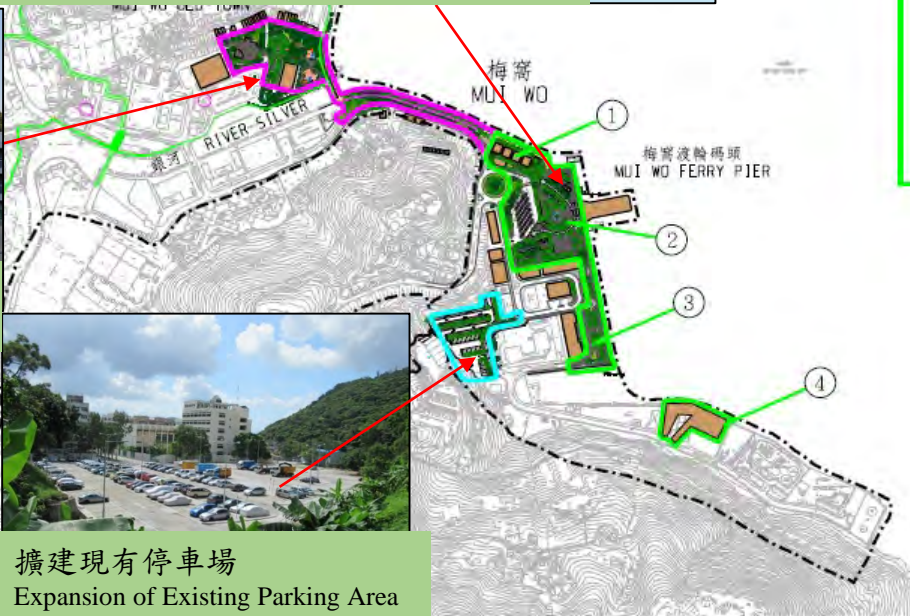
梅窩改善工程 Improvement Works at Mui Wo



餘下工程電腦模擬立體圖 Computer Simulation of Remaining Works



市鎮廣場表演台
Civic Square Performance Stage



擴建現有停車場
Expansion of Existing Parking Area

第一期工程 PHASE 1 WORKS
 已於2017年6月完成
 COMPLETED IN JUN 2017

第二期第一階段工程 PHASE 2 STAGE 1 WORKS
 已於2019年3月完成
 COMPLETED IN MAR 2019

- 餘下工程 REMAINING WORKS
- ① 重置熟食中心及單車停泊區
REPROVISIONING OF A COOKED FOOD MARKET AND CYCLE PARKING AREA
 - ② 擬建梅窩碼頭廣場及重置公共交通交匯處
CONSTRUCTION OF AN ENTRANCE PLAZA AND REPROVISIONING OF A PUBLIC TRANSPORT INTERCHANGE
 - ③ 改善南面海濱
IMPROVEMENT TO SOUTH WATERFRONT
 - ④ 重置貨物裝卸區
REPROVISIONING OF CARGO LOADING AND UNLOADING AREA
 - ⑤ 增設/改善梅窩的單車徑網絡及文物徑
PROVISIONING OF A CYCLE TRACK NETWORK AND HERITAGE TRAIL

圖例
LEGEND:
 項目範圍
PROJECT LIMIT

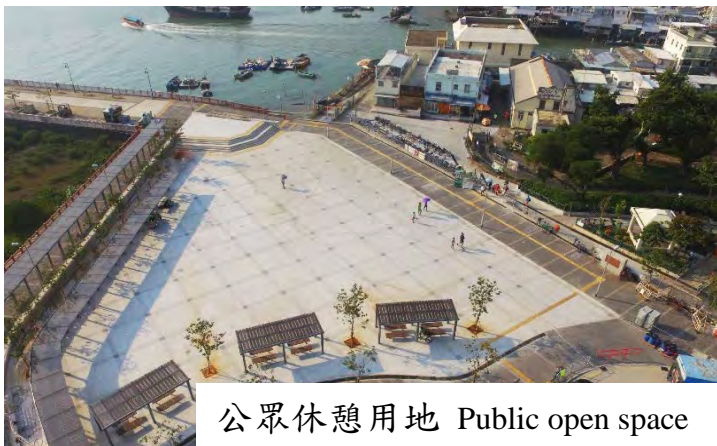
2. 地區改善工程 Local Improvement Works

大澳改善工程

Improvement Works at Tai O

第二期第一階段工程(已完成)

Phase 2 Stage 1 Works (Completed)



公眾休憩用地 Public open space



公眾停車場 Public parking area

第二期第二階段工程(擬議)

Phase 2 Stage 2 Works (Proposed)



擬建鹽田橋構思圖

Conceptual drawing of proposed footbridge at Yim Tin



擬建寶珠潭橋構思圖

Conceptual drawing of proposed footbridge at Po Chue Tam



擬建社區和文化活動用地及停車場構思圖

Conceptual drawing of proposed space for community and cultural events and parking area

2. 地區改善工程 Local Improvement Works

南大嶼山區內道路及碼頭設施改善工程

Local Roads and Pier Facilities Improvement Works in South Lantau

「檢視大嶼山的交通運輸基建網絡及旅客接待能力的研究」

“Study on Traffic, Transport and Capacity to Receive Visitors for Lantau”

- 審視南大嶼山區內道路及碼頭設施的改善工程，以及可行的綠色交通運輸方式和旅客接待能力
- 預計於2021年下半年完成
- Examine the internal traffic and transport (possible road and pier improvement works), possible green transport and the capacity to receive visitors for Lantau.
- Anticipated to be completed in the second half of 2021.



香港特別行政區邊界
Boundary of the Hong Kong Special
Administrative Region

總體研究範圍
Study Area

3. 保育及康樂設施 Conservation and Recreation Facilities

大嶼山遠足徑及康樂設施計劃 Lantau Trails and Recreation Plan

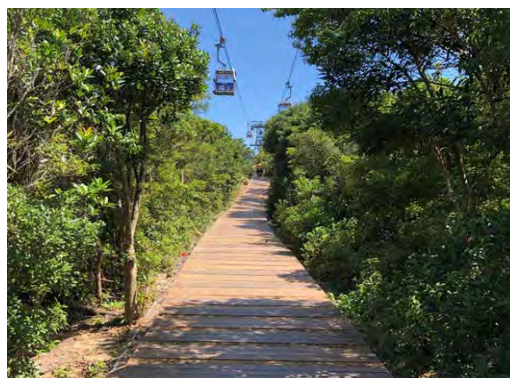


- 分階段推展和落實各項擬議項目及措施 Take forward different proposed projects and initiatives for implementation in phases

休閒和康樂設施改善工程 Improvement Works for Leisure and Recreation Facilities



蘿箕灣營地
設立可持續環保旱廁
Install sustainable waterless
toilet at Lo Kei Wan Campsite



改善彌勒山郊遊徑
Improve Nei Lak Shan Country Trail



美化舊東涌道（伯公坳至長沙之間）
Enhance the scenery of old Tung Chung Road
between Pak Kung Au and Cheung Sha

3. 保育及康樂設施 Conservation and Recreation Facilities

越野單車徑網絡改善工程

Improvement Works for Mountain Bike Trail Networks



梅窩和芝麻灣擴建越野單車徑網絡
及練習場

Expansion of Mountain Bike Trail Networks
and Practice Ground in
Mui Wo and Chi Ma Wan



土坡場
Pump Track



獨木橋
Skinny



小騎士土坡場
Tot Track



碎石坡道
Rock Garden

公眾參與、教育及推廣活動

Public Engagement, Education and Promotion Activities

公眾參與 Public Engagement

- 五個專家小組 5 Expert Groups/Panels

教育 Education

網上學習課程計劃 (中小學生)

Online Education Programme

(Primary and Secondary School Students)



香港環保活動主任協會
Hong Kong Environmental Activities Director Association



「邂逅水口」公民科學網上工作坊

“Shoring Up Shui Hau” Online Citizen

Scientist Workshop



推廣 Promotion

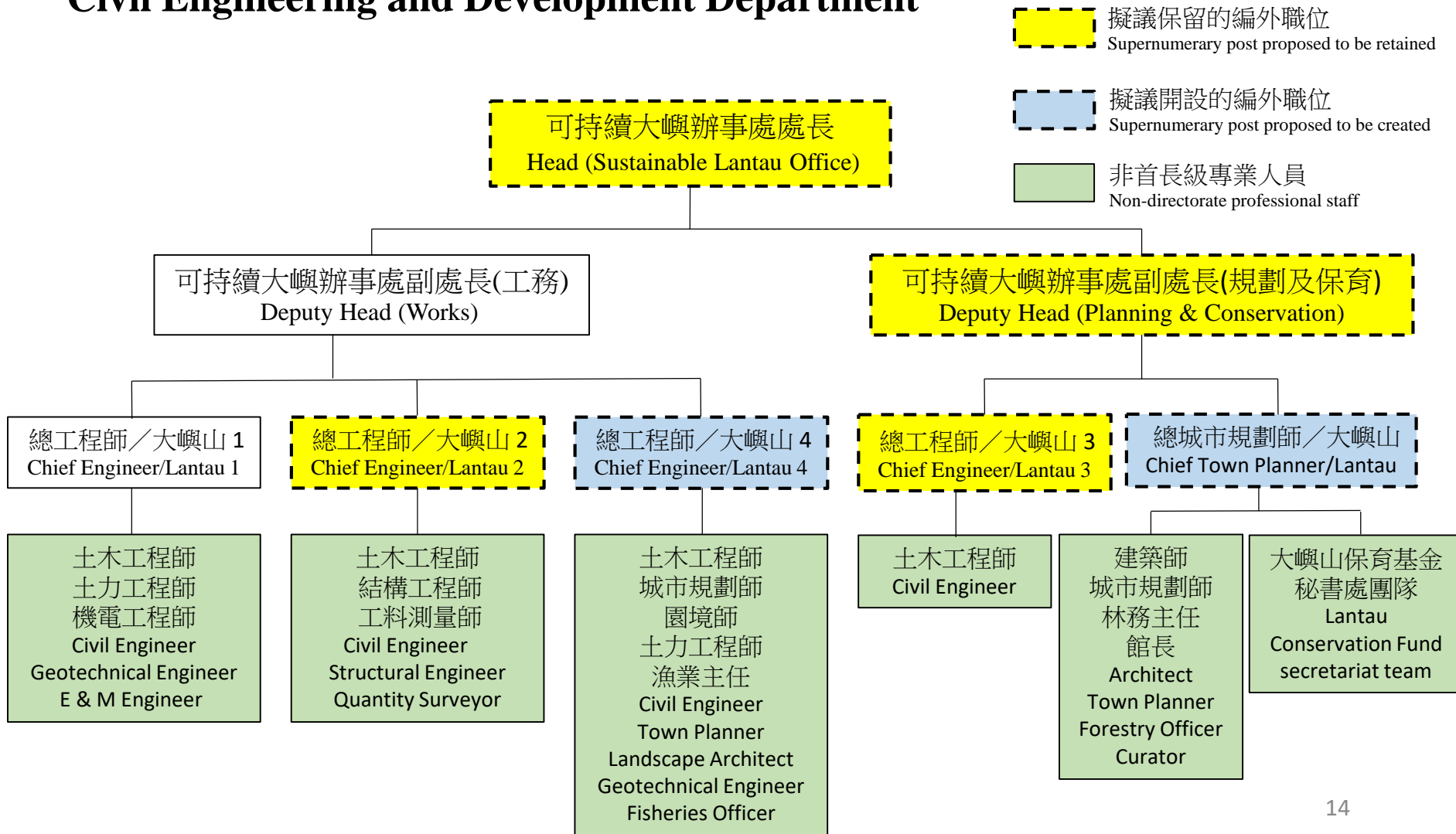
大嶼山綠色生活 - 巡迴展覽

Green Living at Lantau – Roving Exhibition



土木工程拓展署可持續大嶼辦事處 建議組織圖

Proposed Organisation Chart of the Sustainable Lantau Office of Civil Engineering and Development Department



規劃署和路政署鐵路拓展處人員編制建議

Staffing Proposals of Planning Department and Railway Development Office (RDO) of Highways Department

規劃署 Planning Department

開設1個總城市規劃師的首長級編外職位

- 就大嶼山可持續發展的各項策略性規劃工作，提供高層次督導

Create one supernumerary directorate post of Chief Town Planner to provide high-level steer for various strategic planning tasks for the sustainable development of Lantau

路政署鐵路拓展處 RDO of Highways Department

開設1個總工程師的首長級編外職位

- 為規劃及推展中部水域人工島相關研究中建議的優先鐵路及可能的較遠期鐵路提供技術支援

Create one supernumerary directorate post of Chief Engineer to provide technical support for the planning and implementation of the proposed priority rail links and the possible rail links for the longer term under the “Studies related to Artificial Islands in the Central Waters”

發展項目 Development Projects

P1公路(大蠔至欣澳段)的工程研究
Engineering Study on Road P1
(Tai Ho - Sunny Bay Section)

欣澳填海
Sunny Bay Reclamation

東涌第54區公營房屋發展
之基礎設施工程
Infrastructure Works for Public
Housing Development at
Tung Chung Area 54

東涌新市鎮擴展
Tung Chung New Town Extension

中部水域人工島
相關研究
Studies related to Artificial
Islands in the Central
Waters



備註：只作圖示之用。建議有待進一步檢討／研究。
Remarks: For illustration only. Proposals are subject to further studies.

保育措施 Conservation Initiatives

大嶼山保育及康樂總綱圖

Lantau Conservation and Recreation Masterplan



西北大嶼生態文化走廊

Northwest Lantau Eco-cultural Corridor

- 改善東澳古道
Tung O Ancient Trail Upgrading
- 活化沿東澳古道的鄉村
Villages Revitalisation along Tung O Ancient Trail
- 大澳自然及文化古蹟區
Tai O Nature and Cultural Heritage District
- 生態農莊
Eco-Farming

北大嶼康樂走廊

North Lantau Recreation Corridor

- 欣澳康樂樞紐
Sunny Bay Entertainment Node
- 欣澳水上活動
Sunny Bay Water-based Activities
- 香港迪士尼樂園度假區
Hong Kong Disneyland Resort
- 東涌河畔公園
Tung Chung River Park
- 迪欣湖活動中心
Inspiration Lake Recreation Centre
- 海濱單車徑
Coastal Biking

鄉鎮地區改善

Rural Township Improvement

大澳
Tai O

- 地區改善工程
District Improvement Works
- 旅客接待能力
Tourist Receiving Capacity

鄉鎮地區改善

Rural Township Improvement

梅窩
Mui Wo

- 翻新景貌，重新確立門戶角色
Facelift to reinstate Gateway Function
- 河溪改善工程
Streams Improvement Works

遠足樞紐

Hiking Hub

- 遠足徑及樞紐
Hiking Trails and Nodes
- 生態康樂活動
Eco-recreation Activities
- 連接周邊自然和文化資產
Connectors to Natural and Cultural Assets
- 配套設施
Supporting Facilities

南大嶼生態康樂走廊

South Lantau Eco-recreation Corridor

- 貝澳及水口保育
Pui O and Shui Hau Conservancy
- 長沙水上活動
Cheung Sha Water-based Activities
- 芝麻灣康樂區
Chi Ma Wan Recreation Area
- 石壁康樂區
Shek Pik Recreation Area
- 單車徑網絡
Biking Network
- 區內連接
Connectors



只作圖示之用。建議有待進一步檢討/研究。
For illustration only. Proposals are subject to review / study.

保育措施 Conservation Initiatives

自然保育 Nature Conservation

- 保育具重要生態價值的生境 Conservation of ecologically important habitats



水口 Shui Hau



貝澳 Pui O



大澳 Tai O

文化保育 Cultural Conservation

- 文化及歷史研究 Cultural and historical studies



鄉村特色 Rural Culture



農業 Agriculture



傳統節慶 Traditional Festivals





大嶼山保育基金 Lantau Conservation Fund

- 第1部分 - 保育及有關項目：

2020年12月已開始接受申請

Part A - Conservation and related projects: **Open for applications from Dec 2020**

- 第2部分 - 小型地區改善工程：

首批獲基金資助的小型地區改善工程將於2021年上半年開展

Part B - Minor Local Improvement Works: **The first batch of local improvement works will commence in the first half of 2021**

謝謝 Thanks



土木工程拓展署
CIVIL ENGINEERING AND
DEVELOPMENT DEPARTMENT

可持續大嶼辦事處
SUSTAINABLE LANTAU OFFICE