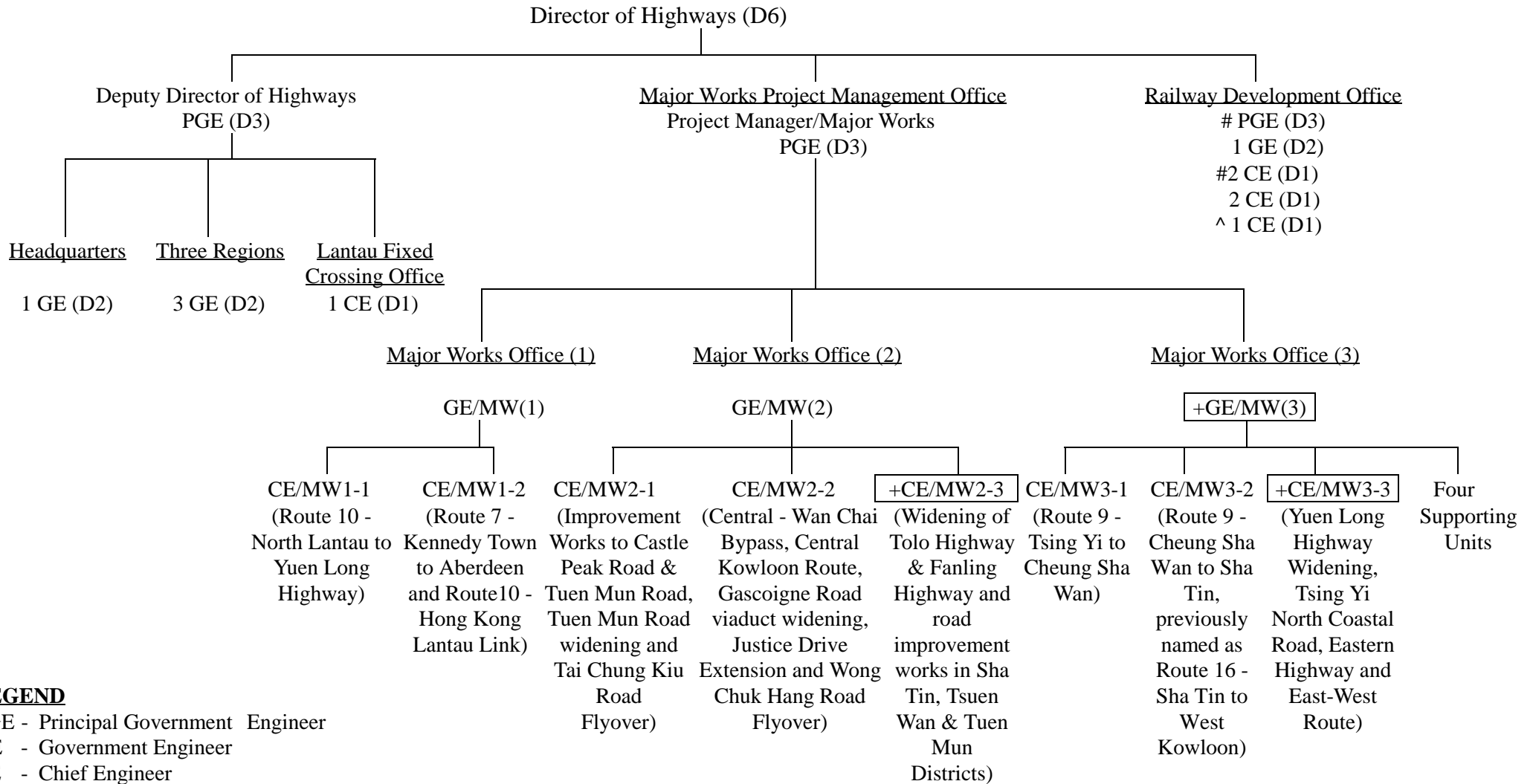


# Proposed Organisation Chart of Major Works Project Management Office

(as at 1 April 1999)



## LEGEND

PGE - Principal Government Engineer

GE - Government Engineer

CE - Chief Engineer

# - Proposal under another ESC submission

+ [ ] - Proposed supernumerary posts to be created for 6 years

^ - Supernumerary post to lapse on 6 December 2001