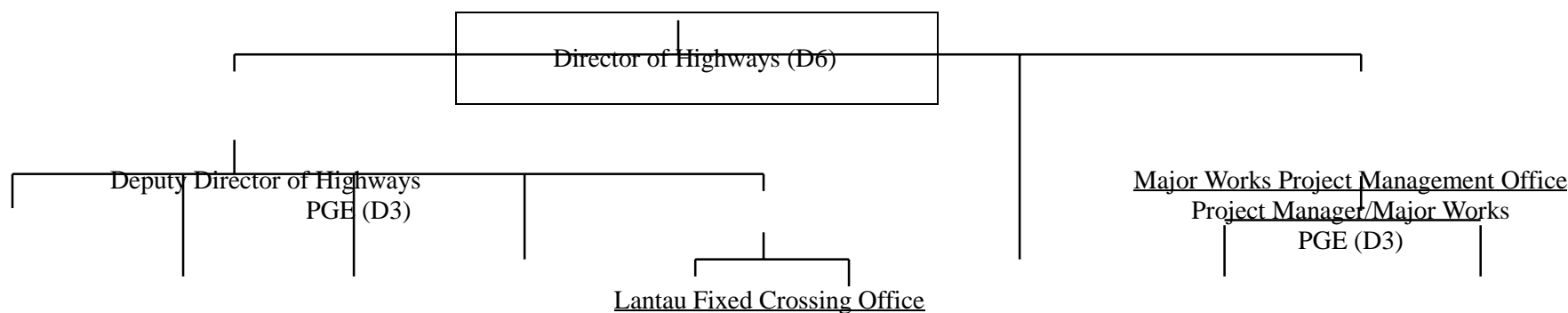


**Organisation Chart of Highways Department
(Position as at April 1998)**



Headquarters -

6 Divisions

<u>8 Units</u> <u>1 Section</u>	<u>Hong Kong</u> <u>Region</u>	<u>Kowloon</u> <u>Region</u>	<u>New</u> <u>Territories</u> <u>Region</u>	<u>Ting Kau</u> <u>Bridge</u>	<u>Lantau Fixed</u> <u>Crossing</u>	<u>Railway</u> <u>Development</u> <u>Office</u>	<u>Major Works</u> <u>Office (1)</u>	<u>Major Works</u> <u>Office (2)</u>
1 GE (D2)	1 GE (D2)	1 GE (D2)	1 GE (D2)	# 1 GE (D2)	@ 1 GE (D2)	1 GE (D2)	1 GE (D2)	1 GE (D2)
3 CE (D1) 1 CLS (D1)	1 CE (D1)	1 CE (D1)	2 CE(D1)	* 1 CE (D1)	@1 CE (D1) 1 CE (D1)	2 CE (D1) ^1 CE (D1) *1 CE (D1)	4 CE (D1)	2 CE (D1) *2 CE (D1)

Legend

Note

PGE - Principal Government Engineer # - Supernumerary post to lapse in 1998-99 34 supporting directorate staff
GE - Government Engineer @ - Supernumerary post to lapse on 1.1.1999
CE - Chief Engineer * - Supernumerary post to lapse on 1.4.1999
CLS - Chief Land Surveyor ^ - Supernumerary post to lapse on 5.12.2001
□ - Supernumerary DHy post (D6) proposed to be made permanent