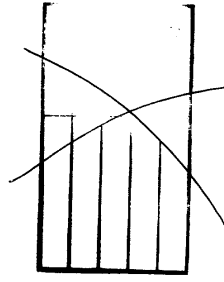


Expected Recurrent Costs for SSDS components and Non-SSDS Sewerage Systems : PELB 3/10/98

	1997/98 (\$ Million)	2000/01 (\$ Million)	mid 2000 - 10 (\$ Million)	late 2000 - 10 (\$ Million)	end 2010 (\$ Million)
SSDS Stage I	90	340	529	529	529
Preliminary Treatment works	50	50	50	50	50
Tunnels & pumping stations	0	4	4	4	4
Treatment	40	286	475	475	475
SSDS Stages III/IV	47	47	102	102	102
Preliminary Treatment works	47	47	77	77	77
Tunnels & pumping stations			25	25	25
SSDS Stage II					
Option 1	0	0	0	515	515
Option 2	0	0	0	0	555
Option 3	0	0	0	1625	1625
Option 4	0	0	0	0	1905
TOTALS					
SSDS Only - option 1	137	387	631	1146	1146
- option 2	137	387	631	631	1186
- option 3	137	387	631	2256	2256
- option 4	137	387	631	631	2536
Other Sewerage	703	950	1200	1550	1770
SSDS and Other systems					
- option 1	840	1337	1831	2696	2916
- option 2	840	1337	1831	2181	2956
- option 3	840	1337	1831	3806	4026
- option 4	840	1337	1831	2181	4306



Year	Meeting	Date	File Name	Pages
98, 199	EN-01	05-10-98	P288, 205	500

CB(1)288/98-99(05)

Assumes 6.35% per annum growth in Non-SSDS Sewerage facilities - in line with 1998 5-year projection
 All figures are in 1998 prices. Depreciation is not included
 Figures are best available in advance of preparation of PWSC submission