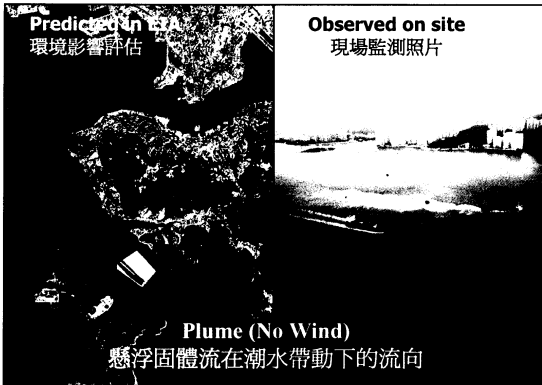


**Dredging of Sand at East Lamma Channel Marine Borrow Area**  
**東博寮海峽的海上挖砂工作**

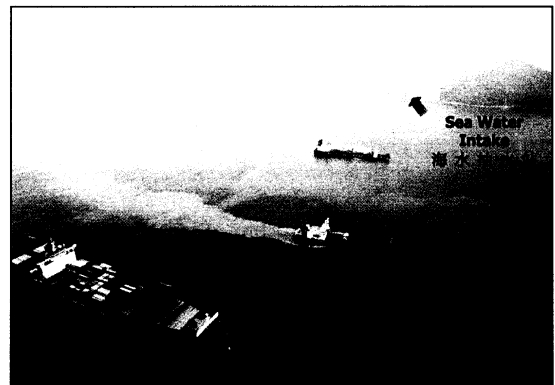
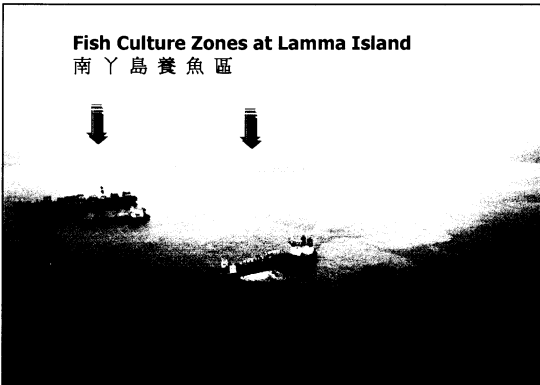


10.1.2001



16.1.2001

**Comparison of EIA prediction and actual plumes observed**  
**現場觀察的懸浮固體流與環境影響評估預測的比較**



**Photographs taken on 1 June 2001 indicated that the plume is confined to the channel**  
**本年六月一日的照片顯示懸浮固體流是局限在海峽內**

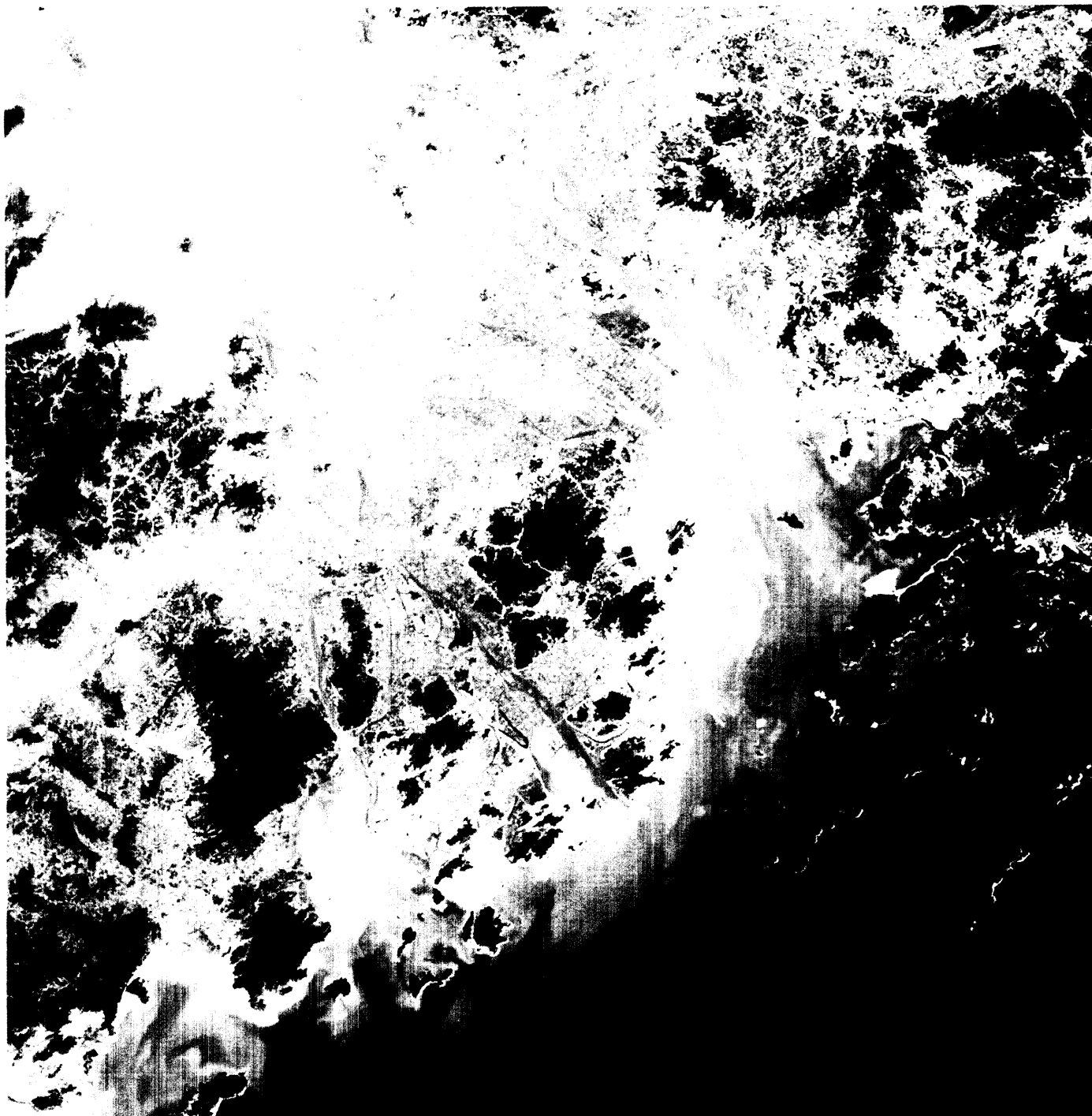


Image taken by LANDSAT 5 on 3.3.1996  
由 LANDSAT 5 於一九九六年三月三日攝取的衛星照片

**Satellite Image of Pearl River Estuary and Western Part of Hong Kong**  
香港西部和鄰近珠江三角洲的衛星照片