



**地鐵公司**  
**MTR Corporation**

---

## **Tung Chung Cable Car Project**

**Presentation to  
Bills Committee  
Legislative Council**

**31 March 2003**

### **The Presentation**

---

- ◆ Project Description
- ◆ Progress Status
- ◆ Project Benefits



## *Project Description*



P.2

### **Major Milestones**

---

- ◆ July 2001 > *Competitive Bids submitted to Government*
- ◆ July 2002 > *Government entered into a Provisional Agreement with MTRC in preference to others*
- ◆ Mid 2003 > *Project Agreement (PA)*
- ◆ Immediately after PA > *Construction commences*
- ◆ Third quarter of 2005 > *Public opening*



P.3

## Scope

- ◆ Tung Chung Terminal Complex
- ◆ Walkway to Citygate
- ◆ Cable Car system
- ◆ Angle stations at Airport Island and Country Park
- ◆ Ngong Ping Terminal and Theme Village



P.4

## Tung Chung Terminal Complex



P.5

## Cable Car System



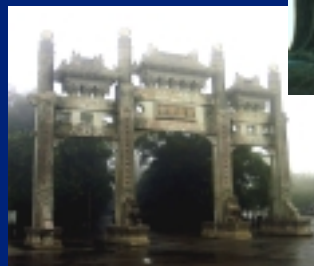
- ◆ Tung Chung to Ngong Ping via Airport Island
- ◆ Total 5.7km in length
- ◆ 2 angle stations
- ◆ 8 towers



P.6

## The Journey

- ◆ Travelling time circa 20 minutes
- ◆ Magnificent views
  - *Tung Chung Area*
  - *Airport*
  - *South China Sea*
  - *Statue of Buddha*
  - *Po Lin Monastery*



P.7

## Ngong Ping Terminal and Theme Village



P.8

## Project Objectives

- ◆ 30 year BOT franchise
- ◆ Integrated cultural and environmental tourism experience
- ◆ High quality, “must-see”
- ◆ Complement Ngong Ping environment
- ◆ Reasonable financial return



P.9

## Project Framework

---

- ◆ Cable Car System + Terminal Buildings
  - *Build-Own-Operate-Transfer basis*
  - *Enabling Ordinance for 30 years franchise period*
  - *No land title*
- ◆ Ngong Ping Theme Village
  - *Private Treaty Grant for 30 years*
- ◆ Aerial Ropeways (Safety) Ordinance



P.10

## Government Organization

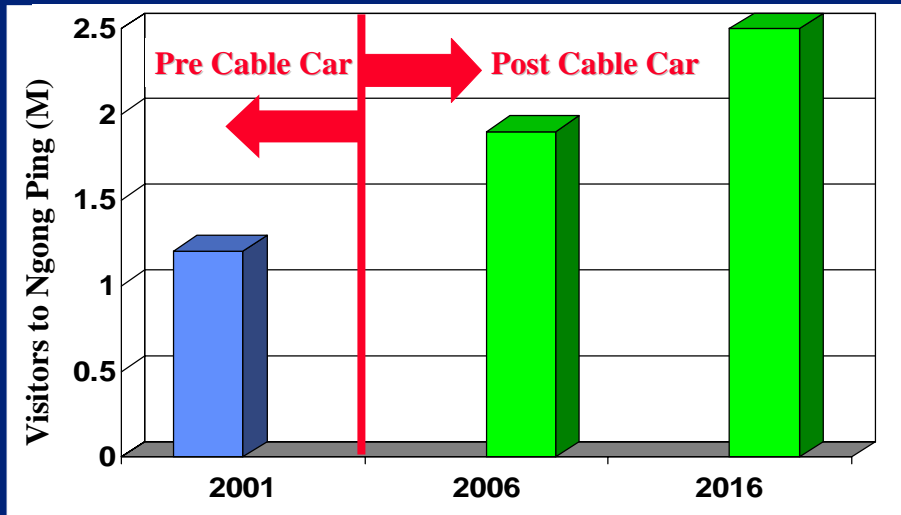
---

- ◆ Tourism Commission
  - *Project owner*
  - *Providing overall direction of the Project*
- ◆ Territory Development Department
  - *Government agent to handle technical issues*
  - *Focal point of contact with government departments*
    - *EMSD*                      ➤ *BD*                      ➤ *EPD*
    - *LandsD*                    ➤ *PlanD*                   ➤ *HyD*
    - *TD*                          ➤ *DSD*                   ➤ *WSD*



P.11

## Growing the Pie



P.12

## Business Viability

- ◆ MTRCL listed company
- ◆ MTR patronage forecasts and market research
- ◆ Viable business case, set out in project proposal
- ◆ No subsidy from Government
- ◆ \$1 royalty/passenger to Government
- ◆ Parallel works by Government
  - Sewage Treatment Plant
  - Piazza area
  - Water supply and drainage systems
  - Public Transport Interchange

Entrusted Works



P.13

## *Progress Status*



P.14

## **Project Framework**

---

- ◆ Tung Chung Cable Car Bill
  - *Gazetted on 30 January 2003*
  - *To LegCo on 12 February 2003*
- ◆ Aerial Ropeways Amendment Regulation 2003
  - *To be gazetted in April/May 2003*
- ◆ Project Agreement
  - *At drafting stage*



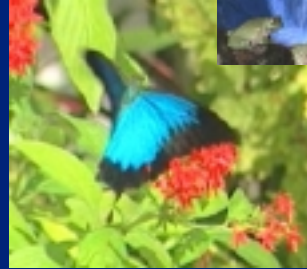
P.15



## Environmental Focus

---

- ◆ Close liaison with EPD, CMPB
- ◆ On-going consultation with Green Groups
  - *Friends of the Earth*
  - *Green Lantau*
  - *Green Power*
  - *Conservancy Association*
  - *Kadoorie Farms*
- ◆ EIA submitted to EPD on 30 January 2003
- ◆ EIA published in March 2003



P.16

## Tourism Issues

---

- ◆ Consultation with
  - *Hong Kong Tourism Board*
  - *Tour Operators*
- ◆ Two distinct markets
  - *Mainland/Taiwan*
  - *Others*
- ◆ Further research required in the Mainland/Taiwan



P.17

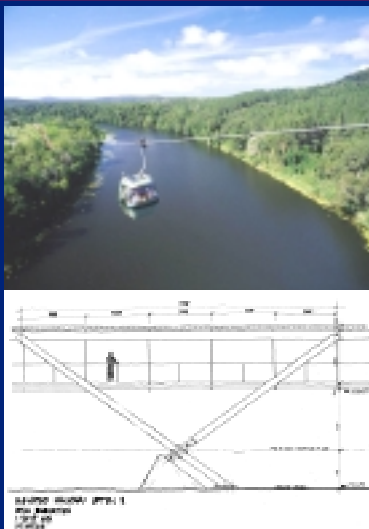
## Community / Interest Groups

- ◆ On-going consultation with
  - *Monastery / Buddhist Groups*
  - *Green Groups*
  - *Country and Marine Parks Board*
  - *Schools*
  - *Islands District Council*
  - *Bus operators*
  - *Rural Committees*
  - ◆ *many others*



P. 18

## Supply Chain - Key Members



- ◆ Skyrail-ITM - Operator and Consultant

- ◆ Leitner - Cable Car Supplier



- ◆ Aedas LPT - Design Consultant

- ◆ Maeda - Building Contractor



P.19

## Project Management

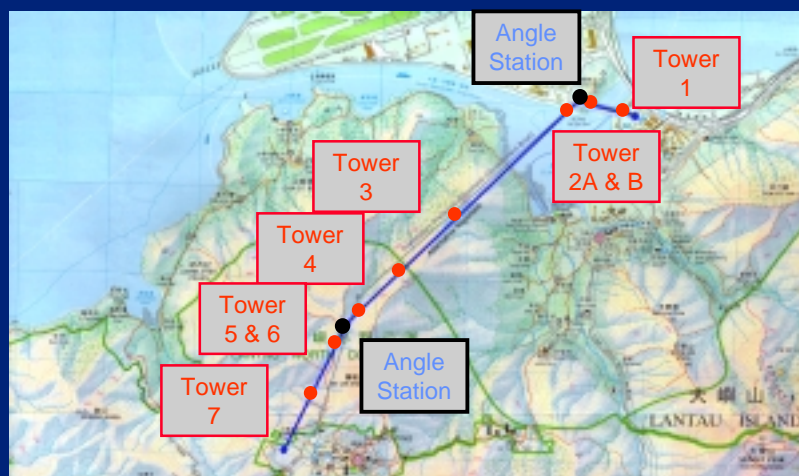
- ◆ Experienced MTRCL project team
  - *includes site supervision, coordination and PR*
  - *Proven systems*
- ◆ Expert cable car operating input from Skyrail-ITM and Leitner



P.20

## Cable Car System

- ◆ Alignment, location of angle stations, towers confirmed



P.21

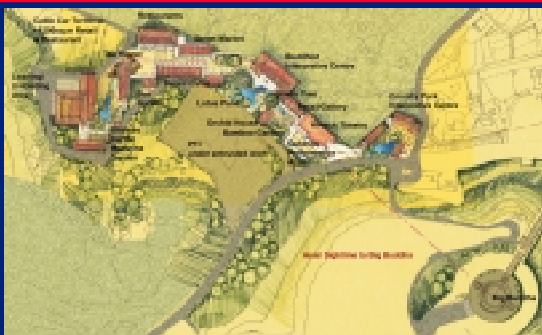
## Cable Car System

- ◆ Bi-cable System
- ◆ Cabin 17 person capacity with 10 seats



P.22

## Ngong Ping Development



- ◆ Themed attractions
- ◆ Educational
- ◆ Food outlets
- ◆ Retail



P.23

## Integration with Ngong Ping

---

- ◆ Consistent design approach for the Cable Car facilities and neighbouring developments
  - *Piazza area*
  - *Public transport interchange*
  - *Sewage treatment plant*



P.24

## *Project Benefits*



P.25

## Benefits of the Project

---

- ◆ New employment
  - *300 people during construction stage*
  - *300 people for operation*
- ◆ Growing the pie at Ngong Ping
- ◆ New tourism attraction for Hong Kong
- ◆ Supporting Lantau as a tourism destination



P.26

***Thank You***

