

Flow Chart of Public Housing Production - In-house Projects

Housing Authority

Housing Department

I. Site Identification

Potential public housing sites are identified in planning and development studies undertaken by Planning Department and other departments or in ad hoc technical studies by Housing Department

Committee on Planning and Land Development chaired by Secretary for Planning and Lands to endorse potential public housing sites. Since 1997, these sites are incorporated into a production forecast monitored by Committee on Land Supply for Housing chaired by Financial Secretary

II. Feasibility

Since 1997, Project manager (an open-discipline post of HD ranked at D1) sets up a multi-disciplinary team to undertake relevant technical studies and draw up development parameters and development cost ceiling

Project geotechnical engineer to undertake preliminary site investigation

Since 1997, Strategic Planning Committee to endorse key development parameters and development cost ceilings of the project and to include the project into Public Housing Development Programme

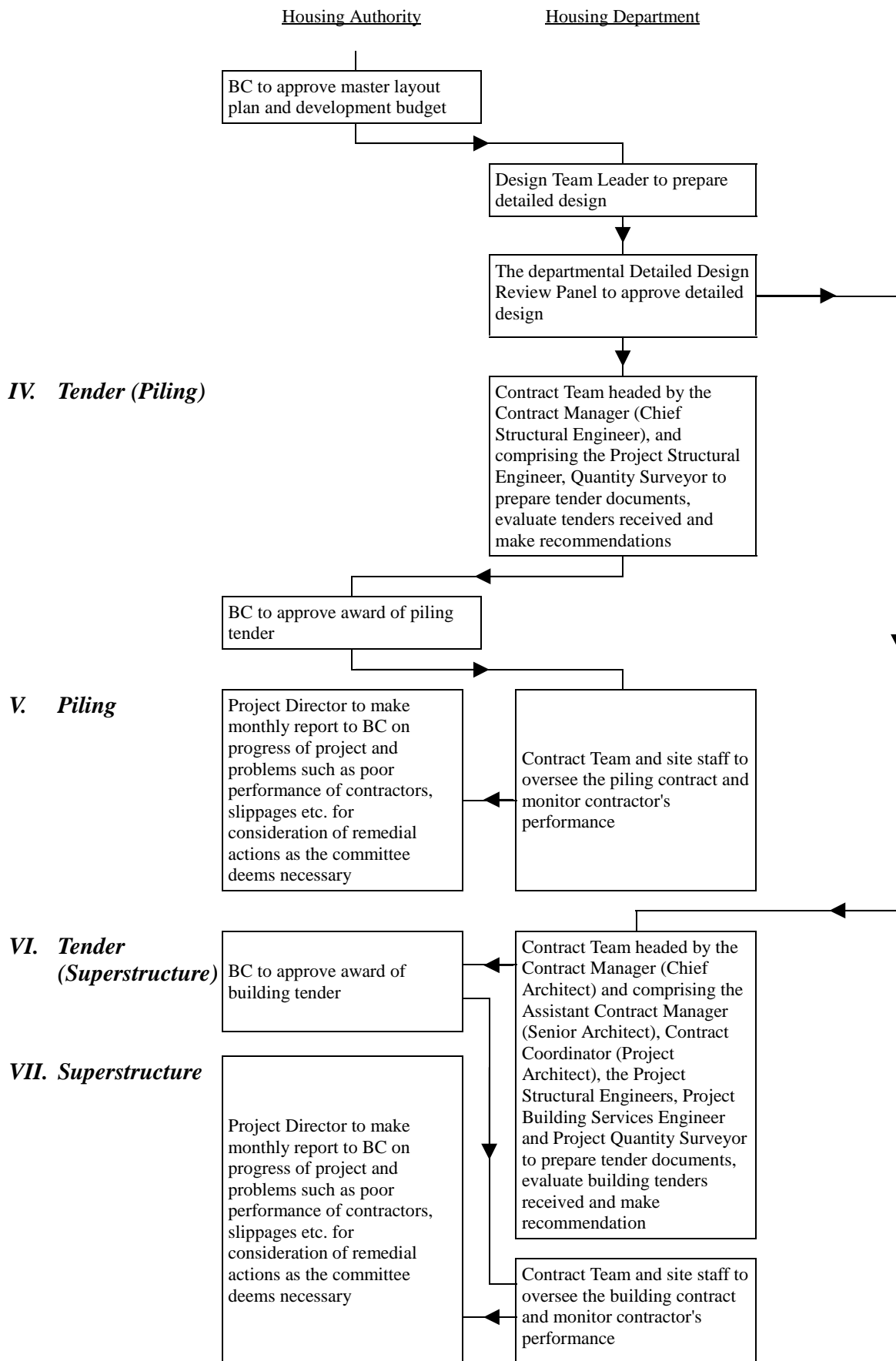
III. Design

Design Team Leader (Chief Architect) to prepare master layout plan and development budgets

Project geotechnical engineer to commission site investigation and prepare foundation advice report

Project Design Review Committee headed by Business Director of Development to endorse master layout plan and development budget for submission to Building Committee (BC); BC Member are co-opted from time to time

Housing Authority



Source of information: Housing Department