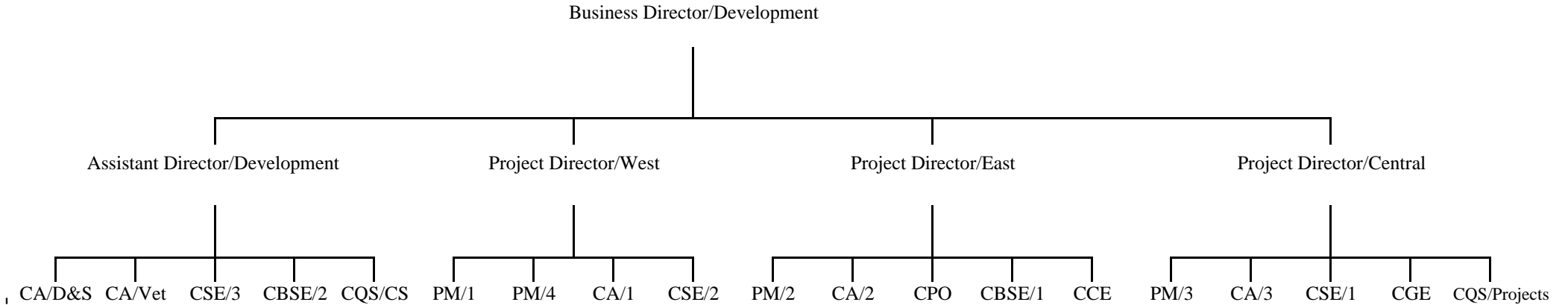


**Organisational Structure of Development & Construction Branch
(Position as at 1 March 1999)**



264

Legend

- CA - Chief Architect
- CSE - Chief Structural Engineer
- CBSE - Chief Building Services Engineer
- CQS - Chief Quantity Surveyor
- PM - Project Manager
- CPO - Chief Planning Officer
- CCE - Chief Civil Engineer
- CGE - Chief Geotechnical Engineer
- D&S - Design and Standard
- CS - Construction Services
- P - Policy
- Vet - Vetting

Source of information : Housing Department