



康樂及文化事務署  
Leisure and Cultural Services Department

電話 TEL: 2601 8966  
圖文傳真 FAX NO: 2602 0297  
本署檔號 OUR REF: (6) in LCS 1/HQ 1802/04 II  
來函檔號 YOUR REF:

27 May 2004

Ms Dora Wai  
Clerk  
Public Accounts Committee  
(By Fax : 2537 1204)

Dear Ms Wai,

**The Director of Audit's Report on the  
Results of value for money audits (Report No. 42)  
Chapter 3 : Harbour Area Treatment Scheme (HATS) Stage I**

I refer to your letter of 19 May 2004 addressed to the Director of Environmental Protection and was referred to me for reply.

As requested, I set out below the additional information on measures taken to prevent the public from swimming at the closed gazetted beaches in Tsuen Wan District to safeguard their health –

- (a) The Leisure and Cultural Services Department (LCSD) has posted up notices and banners at prominent locations near the entrances of the beaches advising the public not to swim in these closed beaches. Photographs of the notices and banners are at **Annex I**;
- (b) Public Announcements are made in Cantonese and English at regular intervals at the more popular beaches (i.e. Lido and Casam Beaches) advising the public not to swim in the water of these beaches. The script of the announcements is at **Annex II**;

- (c) Press releases on the re-opening of the gazetted beaches and the continued closure of certain beaches with very poor water quality including those in Tsuen Wan District are issued at the beginning of each swimming season. A copy of the press release made in February 2004 is at **Annex III**;
- (d) Environmental Protection Department has been issuing weekly press releases on the water quality of gazetted beaches. These press releases, include the message that the seven gazetted beaches in Tsuen Wan District are closed to swimmers throughout the year because of very poor water quality. The public are also advised not to swim at these closed beaches. The latest press release issued on 14 May 2004 is at **Annex IV**; and
- (e) The staff of LCSD also give verbal warning to people who are found swimming in the water of these closed beaches.

Yours sincerely,



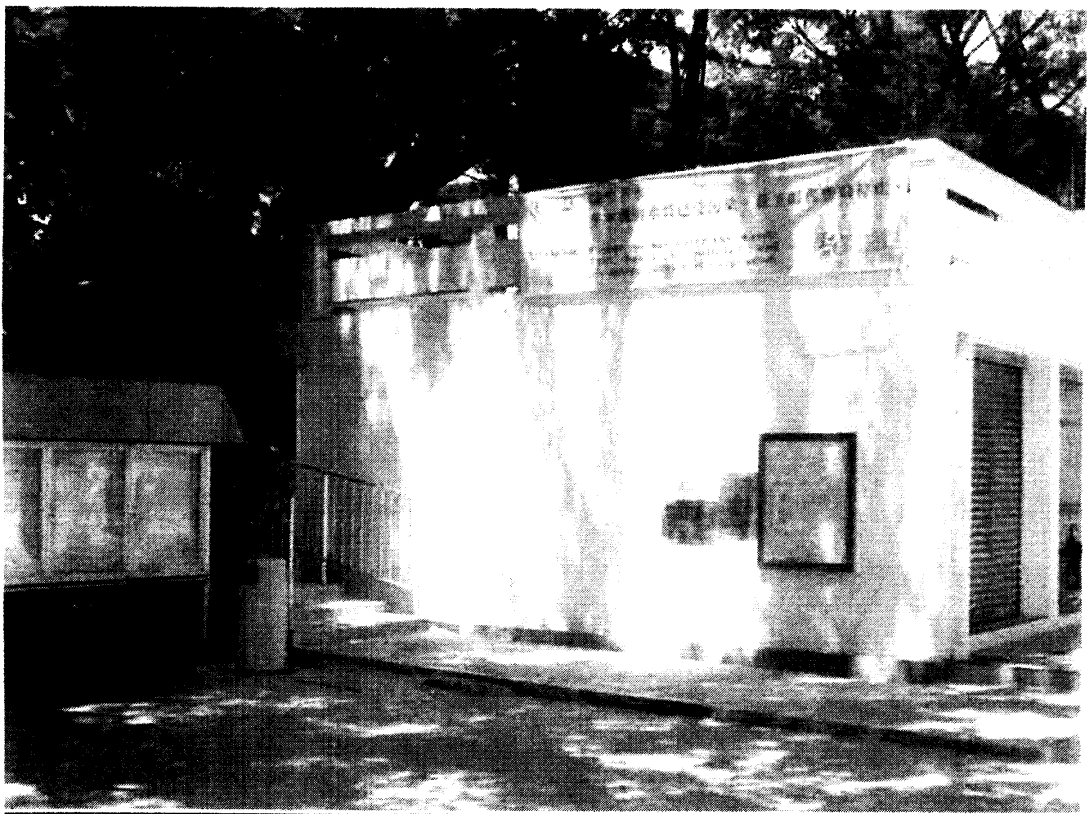
(Paul K K Cheung)

for Director of Leisure and Cultural Services

c.c. Secretary for the Environment, Transport and Works  
Secretary for Home Affairs  
Secretary for Financial Services and Treasury  
Director of Drainage Services  
Director of Audit  
Director of Environment Protection



Lido Beach Office



## **Annex II**

各位泳客請注意：(2次)

此泳灘之海水受污染，不宜游泳，亦無救生服務。若冒險在此處游泳，需對自己安全負責。

Attention please: (Twice)

The sea water at this district is polluted and not suitable for swimming. No lifeguard service is provided. Swimming will be at your own risk.

32 beaches to reopen soon

\*\*\*\*\*

The Leisure and Cultural Services Department will reopen 11 beaches in the urban areas from March 1 and 21 beaches in the New Territories from April 1.

The 11 beaches in the urban areas are:

Deep Water Bay Beach  
Repulse Bay Beach  
Middle Bay Beach  
South Bay Beach  
Chung Hom Kok Beach  
St Stephen's Beach  
Stanley Main Beach  
Hairpin Beach  
Turtle Cove Beach  
Shek O Beach  
Big Wave Bay Beach

Lifeguard services will be provided daily from 9am to 6pm from March to May and from September to November. During the peak season from June to August, lifeguards will be on duty from 9am to 6pm Monday to Friday and from 8am to 7pm on Saturdays, Sundays and public holidays.

The 21 beaches in the New Territories are:

Sai Kung District

-----

Trio Beach  
Kiu Tsui Beach  
Hap Mun Bay Beach  
Silverstrand Beach  
Clear Water Bay First Beach  
Clear Water Bay Second Beach

Tsuen Wan District

-----

Ma Wan Tung Wan Beach

Tuen Mun District

-----

Butterfly Beach  
Kadoorie Beach  
Cafeteria Old Beach  
Cafeteria New Beach  
Golden Beach

Lamma Island

-----

Hung Shing Yeh Beach  
Lo So Shing Beach

Cheung Chau  
-----

Kwun Yam Beach  
Cheung Chau Tung Wan Beach

Lantau Island  
-----

Silver Mine Bay Beach  
Pui O Beach  
Lower Cheung Sha Beach  
Upper Cheung Sha Beach  
Tong Fuk Beach

Daily lifeguard services at the above beaches in April, May, September and October will operate from 9am to 6pm. Again, during the peak season from June to August, lifeguards will be on duty from 9am to 6pm from Mondays to Fridays and from 8am to 7pm on Saturdays, Sundays and public holidays.

All these beaches have been installed with shark prevention nets except Lower Cheung Sha Beach on Lantau Island and Cafeteria Old Beach in Tuen Mun District.

Meanwhile, the following beaches will not be opened to the public for swimming. However, ancillary services on these beaches such as the sand areas, toilet, changing facilities and barbecue pits will still be provided. They are:

Hong Kong Island  
-----

Rocky Beach

Tsuen Wan District  
-----

Anglers' Beach  
Casam Beach  
Gemini Beaches  
Hoi Mei Wan Beach  
Lido Beach  
Ting Kau Beach  
Approach Beach

Tuen Mun District  
-----

Castle Peak Beach

Ends/Saturday, February 28, 2004  
NNNN

## Press Release

### Grading of beach water quality released

The Environmental Protection Department today (May 14) released the latest grading of water quality of 33 beaches open to the public, rating 19 as Good (Grade 1), 13 as Fair (Grade 2) and one as Poor (Grade 3).

The beach with an asterisk is a non-gazetted beach. (S) indicates a beach that is equipped with a shark net.

Grade 1 beaches are:

Cheung Chau Tung Wan Beach (S)	Deep Water Bay Beach (S)
Kwun Yam Beach (S)	Hairpin Beach (S)
Hung Shing Yeh Beach (S)	Middle Bay Beach (S)
Lo So Shing Beach (S)	Repulse Bay Beach (S)
Pui O Beach (S)	Stanley Main Beach (S)
Lower Cheung Sha Beach	St. Stephen's Beach (S)
Tong Fuk Beach (S)	Turtle Cove Beach (S)
Upper Cheung Sha Beach (S)	Kiu Tsui Beach (S)
Clear Water Bay Second Beach (S)	Trio Beach (S)
Hap Mun Bay Beach (S)	

Grade 2 beaches are:

Silver Mine Bay Beach (S)	Big Wave Bay Beach (S)
Butterfly Beach (S)	Chung Hom Kok Beach (S)
Cafeteria New Beach (S)	Shek O Beach (S)
Cafeteria Old Beach	South Bay Beach (S)
Golden Beach (S)	Silverstrand Beach (S)
Clear Water Bay First Beach (S)	Discovery Bay*
Ma Wan Tung Wan Beach (S)	

Grade 3 beach is Kadoorie Beach (S).

Comparing with the grading released last week, Clear Water Bay First Beach and South Bay Beach have changed from Grade 1 to Grade 2 and Kadoorie Beach from Grade 2 to Grade 3.

"The changes are generally within the normal range of fluctuation of the bacteriological water quality of the beach," a spokesman said.

Beach grades are published weekly before the weekend. The information may also be obtained from the department's homepage at [www.epd.gov.hk](http://www.epd.gov.hk) or the beach hotline, 2511 6666.

Under the grading system, beaches are classified into four grades according to the level of E. coli in the water.

Grades are calculated on the basis of the geometric mean of the E. coli counts on the five most recent sampling occasions.

Grade 4 is assigned to beaches whose last E. coli reading exceeded a threshold figure, irrespective of the geometric mean. Swimmers are advised to avoid these beaches until the water quality improves.

Seven gazetted beaches - Anglers' Beach, Approach Beach, Ting Kau Beach, Casam Beach, Gemini Beaches, Hoi Mei Wan Beach and Lido Beach - are closed to swimmers year round



EPD - Press Releases

because of poor water quality.

The public is advised not to swim at these closed beaches.

The spokesman cautioned that many beaches were likely to be more polluted than their grades suggested during and after periods of heavy rain. Bathers should avoid swimming at beaches for up to three days after a storm or heavy rainfall.

Ends/Friday, May 14, 2004