

Concept Plan

for

Lantau

大嶼山



Lantau Development Task Force

The Government of the Hong Kong Special Administrative Region

October 2004

Lantau Development Task Force

CB(1)122/04-05(01)

- Set up in February 2004 and chaired by the Financial Secretary to provide a high-level policy steer on economic and infrastructure development in Lantau

- Key tasks are:
 - to provide a planning framework to ensure a balanced and coordinated approach for the planned developments; and

 - to ensure the timely provision of necessary land and infrastructure for, and delivery of, the planned projects

Current Position

CB(1)122/04-05(01)

- Existing development projects



Hong Kong International Airport



North Lantau New Town

DIFFERENT POSSIBLE ALIGNMENTS FOR THE PROPOSED HONG KONG-ZHUSHAN MACAO BRIDGE AND NORTH LANTAU HIGHWAY CONNECTION



Tung Chung Cable Car

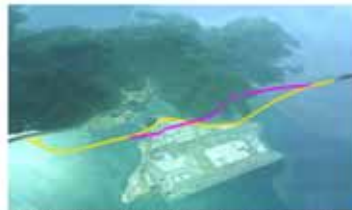


Hong Kong Disneyland

Concept Plan for Lantau

New Land Use Needs

- To strengthen economic pillars of tourism and logistics developments
- To improve connectivity to Pearl River West via Hong Kong-Zhuhai-Macao Bridge (HZMB)

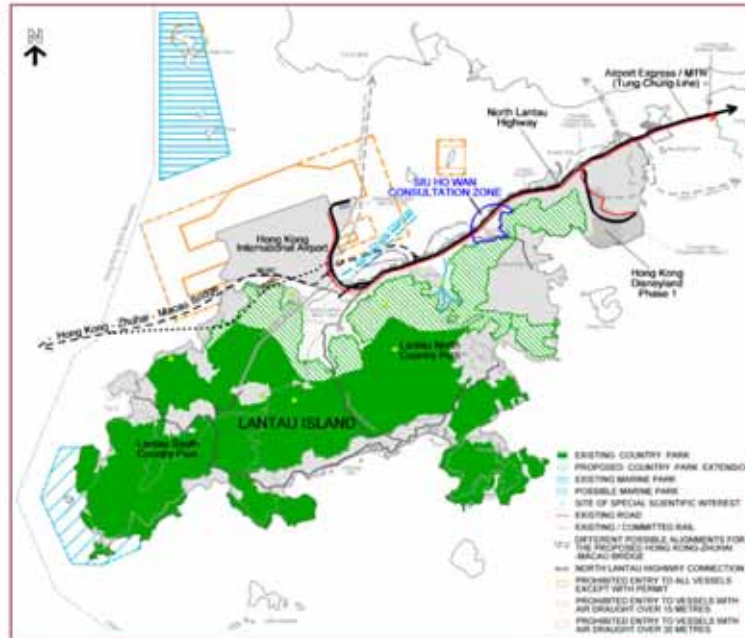


Different possible alignments for the proposed HZMB and North Lantau Highway Connection

Planning Considerations

CB(1)122/04-05(01)

- Need for conserving high quality natural landscape, ecological and cultural heritage sites
- Capacity of external transport links
- Airport height restrictions and aircraft noise
- Shipping channels and water quality considerations
- Topographical and other technical constraints



Shaping Future Lantau

CB(1)122/04-05(01)

▪ *Vision*

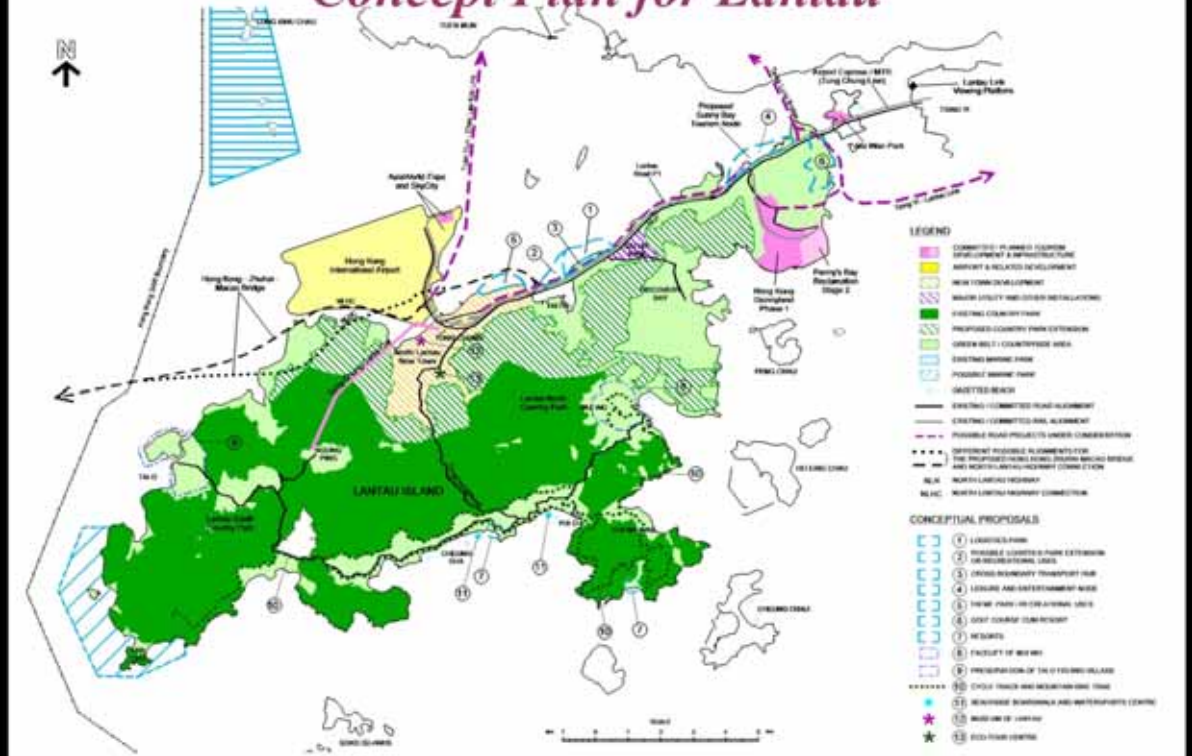
- to promote sustainable development of Lantau by balancing development and conservation needs

▪ *Overall Concept*

- to focus major economic infrastructure and urban development in North and North East Lantau to optimise the planned transport links and infrastructure
- to protect other parts of Lantau, comprising high quality landscape and ecologically sensitive natural environment, for conservation and environmentally sustainable recreational and visitor uses

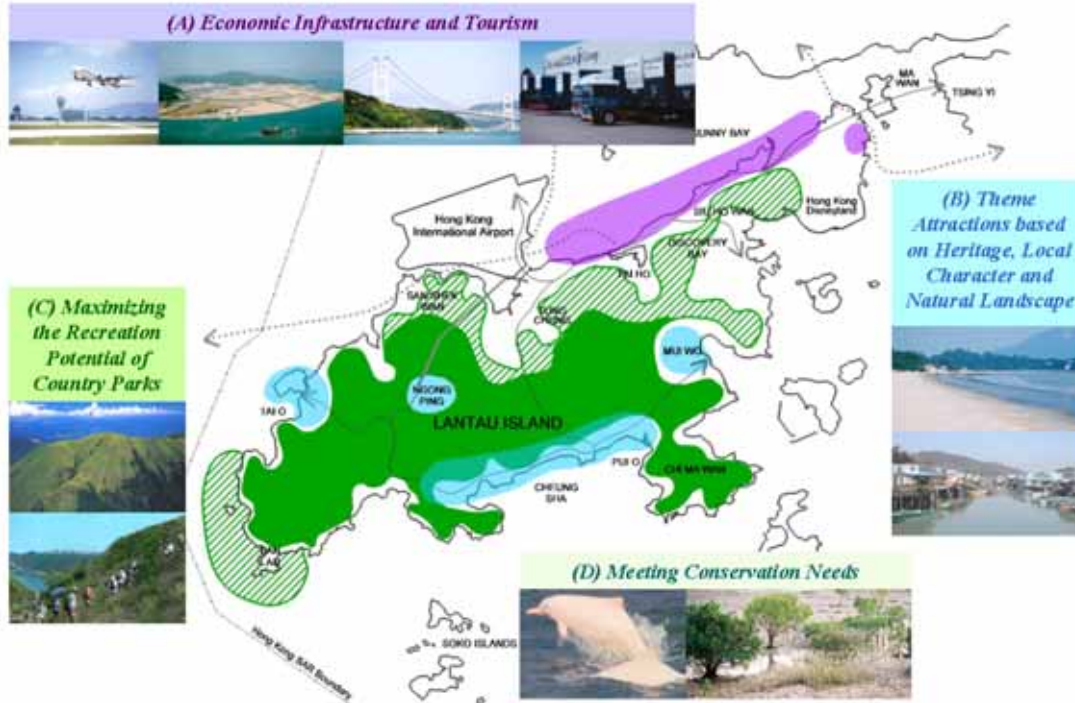
Concept Plan for Lantau

CB(1)122/04-05(01)



Broad Development Themes

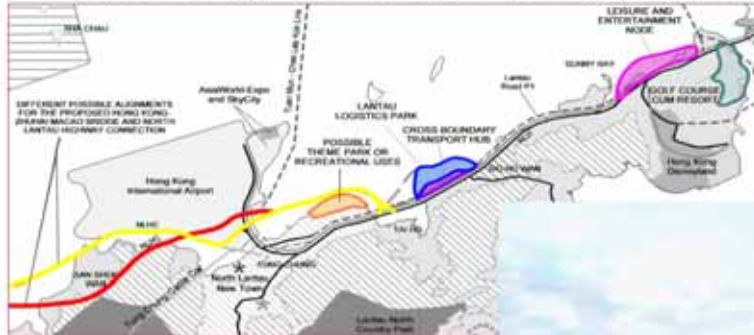
CB(1)122/04-05(01)



(A) Economic Infrastructure and Tourism

CB(1)122/04-05(01)

- To strengthen our economic competitiveness
- To provide a greater variety of tourist attractions



(A) Economic Infrastructure and Tourism

CB(1)122/04-05(01)



- ### Cross Boundary Transport Hub
- convenient connection to HZMB
 - help relieve pressure on road network

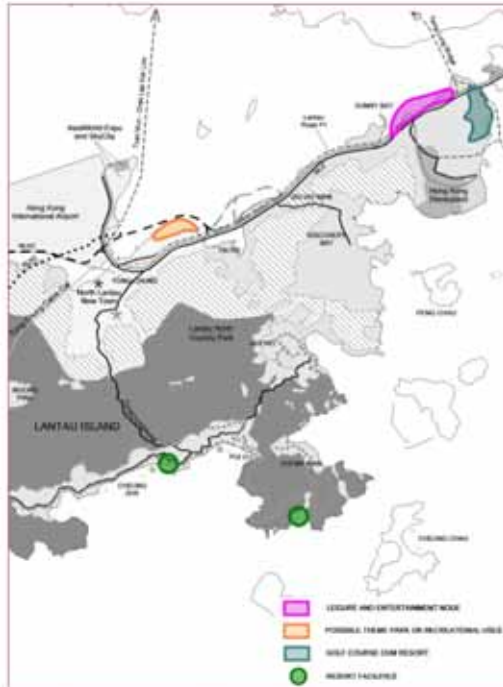


Lantau Logistics Park

- to strengthen Hong Kong's role as an international and regional logistics hub
- close to airport, container port at Kwai Chung and HZMB
- area to the west for possible logistics park extension or compatible recreational uses

(A) Economic Infrastructure and Tourism

CB(1)122/04-05(01)



Leisure and Entertainment Node at Sunny Bay



Possible Theme Park or Recreational Uses at Tung Chung East



Golf Course cum Resort at Tsing Chau Tsai



Resort facilities in South Lantau



CB(1)122/04-05(01)

(B) Theme Attractions based on Heritage, Local Character and Natural Landscape

- To harness the recreation potential and local attraction of rural Lantau and to boost local economy

Museum of Lantau and Eco-tour Centre



Eco-tour Centre at Tung Chung Fort – Illustrative Concept

(B) Theme Attractions based on Heritage, Local Character and Natural Landscape CB(1)122/04-05(01)

Facelift of Mui Wo



Entrance Plaza at Mui Wo – Illustrative Concept

(B) Theme Attractions based on Heritage, Local Character and Natural Landscape CB(1)122/04-05(01)

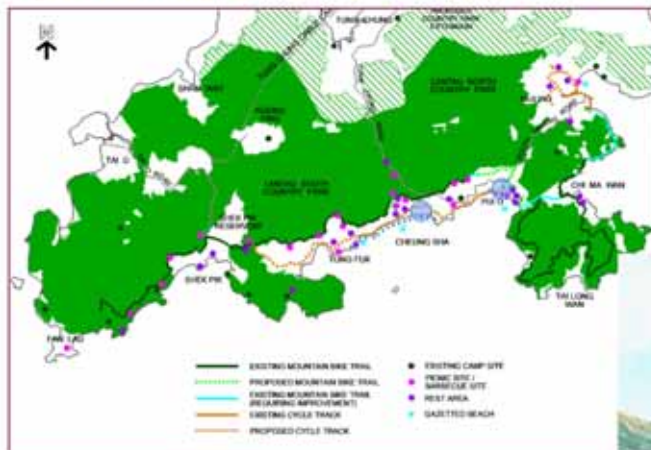
Preservation of the Tai O Fishing Village



(B) Theme Attractions based on Heritage, Local Character and Natural Landscape

CB(1)122/04-05(01)

Cycle Track and Mountain Bike Trail Network in South Lantau



(B) Theme Attractions based on Heritage, Local Character and Natural Landscape

CB(1)122/04-05(01)

Boardwalks and Watersports Centres in South Lantau



(C) Maximising Recreation Potential of Country Parks

CB(1)122/04-05(01)

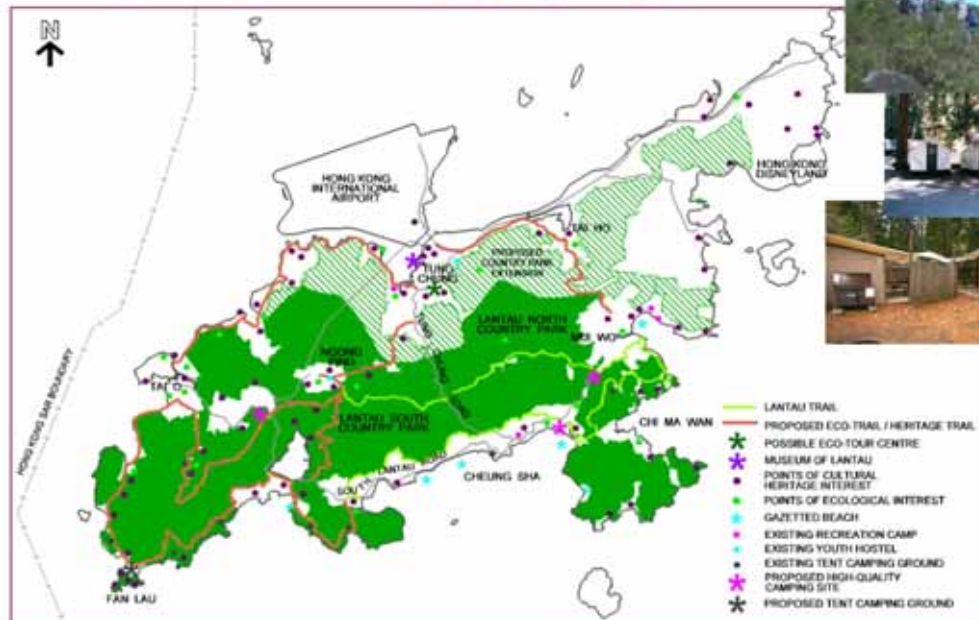
- To promote eco-tourism and sustainable educational and recreational activities



(C) Maximising Recreation Potential of Country Parks

CB(1)122/04-05(01)

Eco-trails, Heritage Trails and High-quality Camping Sites

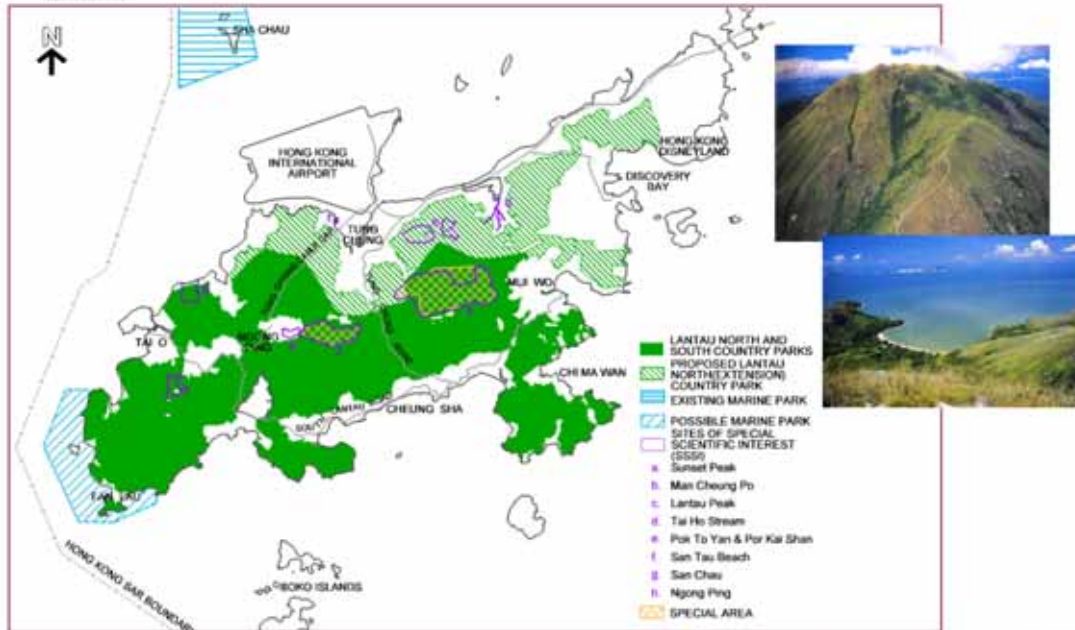


Concept Plan for Lantau

(D) Meeting Conservation Needs

CB(1)122/04-05(01)

- To achieve balanced planning integrating development and conservation needs
- To implement Lantau North (Extension) Country Park and Marine Park in Southwest Lantau



Concept Plan for Lantau

(D) Meeting Conservation Needs

CB(1)122/04-05(01)

- To protect other sites of conservation value



Towards Sustainable Development

CB(1)122/04-05(01)

- Preliminary sustainability assessment shows that the Concept Plan should contribute to :
 - economic development of Hong Kong ;
 - economic benefits including creation of jobs, investment and local business opportunities ;
 - more leisure and recreation outlets ; and
 - sustaining our cultural vibrancy and bio-diversity.

- Further sustainability assessments will be conducted.

Welcoming Your Views

CB(1)122/04-05(01)

- The Concept Plan provides a coherent and balanced planning framework for Lantau. Proposals are conceptual for community discussion at this stage.
- We welcome Members' views on the Concept Plan.
- We intend to launch formal public consultation later this year.

