

For discussion
On 22 November 2005

**LEGISLATIVE COUNCIL
PANEL ON PLANNING, LANDS AND WORKS**

**DEVELOPMENT AND IMPLEMENTATION OF
GREENING MASTER PLANS**

PURPOSE

The purpose of this paper is to brief Members on two funding applications to the Public Works Subcommittee (PWSC) for development and implementation of greening master plans (GMPs).

BACKGROUND

2. At the meeting held on 13 July 2005, we informed Members about a new initiative to develop GMP for selected urban districts. We also took the opportunity to report progress on development of the GMP for Tsim Sha Tsui and indicated our intention to develop the GMP for Central.

3. In view of the positive feedback received from Members and other stakeholder groups, we will proceed with funding applications for –

- (a) implementation of greening works as recommended in the GMPs for Tsim Sha Tsui and Central;
- (b) development of GMPs and detailed design of greening works for selected areas in Kowloon West and Hong Kong Island; and
- (c) associated site investigations.

GREENING MASTER PLAN

4. A GMP seeks to define the overall greening framework of an area by identifying suitable locations for planting together with desirable themes and species, thus serving as a guide to the planning, design and implementation of

greening works for continuous and consistent results.

5. In recognition of the fact that greening opportunities arise under different timeframes, GMPs will embody a full spectrum of short, medium and long-term measures. Short-term measures are those conforming to the district layout, posing no conflict with land use and/or traffic arrangements.

6. The urban areas in Hong Kong are subject to incessant upgrading, renewal and redevelopment. It is hence important for GMPs to interface with other on-going studies or planned redevelopments. Greening opportunities associated with these studies or redevelopments are classified as medium-term measures for monitoring and follow-up.

7. Finally, long-term measures depict the ultimate greening vision setting aside constraints such as land availability, congested underground installations and overhanging signboards, deploying ambitious and innovative methods or techniques like tree corridors alongside highways, roof/podium gardens and vertical greening. Realisation of this vision will have implications on planning and land administration policies.

GMP for Tsim Sha Tsui

8. The GMP for Tsim Sha Tsui at **Annex 1** proposes an overarching theme of “Jade Necklace” by linking up major greened areas including the Kowloon Park, ex-Marine Police Headquarters, open space surrounding the Cultural Centre, Middle Road Children’s Playground, Tsim Sha Tsui East Promenade and the Centenary Garden. When examining the GMP for Tsim Sha Tsui at the meeting on 13 July 2005, Members called for expedited implementation of the related greening proposals. To this end, six pilot greening schemes at Middle Road, Austin Road, Hillwood Road, Science Museum Path, Chatham Road South and Kowloon Park Drive are in progress for completion by end-November 2005.

GMP for Central

9. Site inspections and surveys were conducted in the Central district to identify existing land use, level and theme of landscape/greening features, traffic and pedestrian conditions, as well as on-going studies and planned developments. The GMP for Central at **Annex 2**, which covers short, medium

and long-term plans, was finalized having regard to all constraints, opportunities and specific characteristics of the waterfront promenade, commercial, civic and entertainment areas.

10. To properly reflect its unique role as the financial centre of Hong Kong, the GMP for Central proposes an overarching theme of ‘Heart of Gold’ realized through plants with golden, yellow, orange or red flowers and foliage (e.g. *Hibiscus tiliaceus* (黃槿), *Plumeria rubra* (雞蛋花) and *Peltophorum pterocarpum* (雙翼豆)), supplemented by trees with a large crown (e.g. *Ficus microcarpa* (細葉榕) and *Cinnamomum camphora* (樟樹)).

PUBLIC CONSULTATION

11. We made an approach to the Yau Tsim Mong District Council on 16 December 2004 with the broad concept of GMP and again on 28 April 2005 with the GMP for Tsim Sha Tsui covering six pilot greening schemes as well as proposed conversion of some roadside parking spaces on Carnarvon Road into planting zones. The Yau Tsim Mong South Area Committee was consulted on 17 May 2005 and the Town Planning Board (TPB) took note of the GMP for Tsim Sha Tsui on 8 July 2005.

12. The draft preliminary GMP for Central was first presented to the Working Group on Greening and Beautification Works in the Central & Western District formed under the Central & Western District Council on 10 June 2005. Having incorporated the comments received, a draft recommended GMP was later presented to the District Council on 21 July 2005. An information paper on the GMP for Central was submitted to TPB on 7 October 2005.

13. Despite the overwhelming support received on these occasions, all affected parties such as nearby shop-owners and residents will be fully consulted before commencement of planting works on site.

FUNDING APPLICATIONS

14. In order to sustain the impetus, we propose to upgrade part of **35CG** and **36CG** to Category A. The scope of 35CG, entitled “Greening master plan for Kowloon West – studies and works”, comprises development of

GMPs and detailed design of greening works in Kowloon West¹ excluding Tsim Sha Tsui² and implementation of greening works in Kowloon West including Tsim Sha Tsui. The scope of 36CG, entitled “Greening master plan for Hong Kong Island – studies and works”, features likewise the development of GMPs and detailed design of greening works on Hong Kong Island³ excluding Central⁴ together with implementation of greening works on Hong Kong Island including Central. These two funding applications will be submitted for consideration by PWSC in December 2005.

Implementation of Greening Works in Tsim Sha Tsui and Central

15. Coverage of the GMPs for Tsim Sha Tsui and Central are shown at **Annexes 3** and **4** respectively. An illustration of some typical greening works is shown at **Annex 5**. About 600 trees and 160,000 shrubs will be planted in Tsim Sha Tsui whilst 300 trees and 50,000 shrubs will be planted in Central. The greening works inclusive of planting and establishment of trees and shrubs as well as provision of associated landscape hardworks are estimated to cost \$24.6 million and \$9.5 million respectively, broken down as follows –

	\$million
(a) Greening works as recommended in the GMP for Tsim Sha Tsui	
(i) planting and establishment of trees and shrubs	9.8
(ii) landscape hardworks	14.8
Sub-total	24.6
(b) Greening works as recommended in the GMP for Central	
(i) planting and establishment of trees and shrubs	3.8
(ii) landscape hardworks	5.7
Sub-total	9.5

¹ Selected areas in Kowloon West refer to those in Yau Tsim Mong, Sham Shui Po and Kowloon City Districts shown in blue and red on the plan at Annex 3.

² Development of GMP and detailed design of greening works for Tsim Sha Tsui (shown in blue on the plan at Annex 3) have been carried out separately as a pilot scheme and are thus outside the scope of 35CG.

³ Selected areas on Hong Kong Island refer to those in Central & Western, Wan Chai, Eastern and Southern Districts shown in blue and red on the plan at Annex 4.

⁴ Development of GMP and detailed design of greening works for Central (shown in blue on the plan at Annex 4) have been carried out separately as a pilot scheme and are thus outside the scope of 36CG.

16. Subject to funding approval, we will commence implementation of the greening works in Tsim Sha Tsui and Central in March 2006 for completion within the same year.

**Development of GMPs for Selected Areas
in Kowloon West and on Hong Kong Island**

17. Building on the success achieved thus far, we propose to extend GMPs to other selected areas in Kowloon West and on Hong Kong Island including Mong Kok, Yau Ma Tei, Sham Shui Po, Cheung Sha Wan, Kowloon City, Kowloon Tong, Hung Hom, Ho Man Tin, Sheung Wan, Wan Chai, Causeway Bay, Eastern District, Sai Ying Pun, Kennedy Town and Aberdeen.

18. Due to limited in-house capacity, we will commission consultants to start off the GMP for Mong Kok/Yau Ma Tei and the GMP for areas running from Sheung Wan to Causeway Bay in January 2006 before performing detailed design and site investigation works by end of the year. We will then proceed to develop GMPs for other areas in Kowloon West and on Hong Kong Island.

19. The key expenditure items are outlined below –

	\$million
(a) GMPs for selected areas in Kowloon West	
(i) Consultants' fees for	
development of GMPs	22.8
detailed design of greening works	5.8
(ii) Site investigation	8.7
Sub-total	<hr/> 37.3
(b) GMPs for selected areas on Hong Kong Island	
(i) Consultants' fees for	
development of GMPs	16.5
detailed design of greening works	4.1
(ii) Site investigation	6.3
Sub-total	<hr/> 26.9

20. The annual recurrent expenditure associated with the greening works in Tsim Sha Tsui and Central are estimated to be about \$1.0 million and \$0.4 million respectively. Furthermore, 140 jobs (70 for labourers and 70 for professional/technical staff) providing total employment of 1 680 man-months will be created.

WAY FORWARD

21. We will submit two papers to PWSC in December 2005 to seek funding for greening works in Tsim Sha Tsui and Central as well as development of GMPs, detailed design and site investigation of the related greening works for selected areas in Kowloon West and on Hong Kong Island.

ATTACHMENTS

- Annex 1 – Greening Master Plan for Tsim Sha Tsui
- Annex 2 – Greening Master Plan for Central
- Annex 3 – Areas in Kowloon West for which Greening Masters Plans will be developed
- Annex 4 – Areas on Hong Kong Island for which Greening Masters Plans will be developed
- Annex 5 – Typical greening proposals for Tsim Sha Tsui and Central

Environment, Transport and Works Bureau
November 2005

**LEGEND****EXISTING GREENING**

- Existing Old & Valuable Trees and Champion Trees
- Existing Massed Trees and Shrubbery
- Other Existing Greenery
- Existing Shrubs on Railing-Mounted Containers

PROPOSED GREENING

- T1 & T2* Trees in Existing Planters & Pavement
- T3* Trees in Containers (See Note 2)
- T4* Shrubs in New Planters
- T5* Shrubs in Existing Planters
- T6a* Shrubs in Containers (See Note 2)
- T6b* Shrubs in Railing-Mounted Containers (See Note 2)
- T7* Hanging Baskets (See Note 2)
- T8a* Climbers on Walls, Columns & Slopes (See Note 2)
- T8b* Comprehensive Slope Treatment
- T9* Climbers on Free-Standing Trellis (See Note 2)
- T10a* Pleached Trees
- T10b* Sculptural & Seasonal Festive Installations
- T10c* Movable Green Partitions
- T10d* Integrated Planters at New Structures

* Note 1: "T" refers to the Greening Types described in the Report

Note 2: Size and spacing of all Greening Type symbols is indicative only and does not reflect real dimensions.



**LEGEND****EXISTING GREENING**

- Existing Old & Valuable Trees and Champion Trees
- Existing Massed Trees and Shrubbery
- Other Existing Greenery
- Existing Shrubs on Railing-Mounted Containers

PROPOSED GREENING

- T1 & T2* Trees in Existing Planters & Pavement
- T3* Trees in Containers (See Note 2)
- T4* Shrubs in New Planters
- T5* Shrubs in Existing Planters
- T6a* Shrubs in Containers (See Note 2)
- T6b* Shrubs in Railing-Mounted Containers (See Note 2)
- T7* Hanging Baskets (See Note 2)
- T8a* Climbers on Walls, Columns & Slopes (See Note 2)
- T8b* Comprehensive Slope Treatment
- T9* Climbers on Free-Standing Trellis (See Note 2)
- T10a* Pleached Trees
- T10b* Sculptural & Seasonal Festive Installations
- T10c* Movable Green Partitions
- T10d* Integrated Planters at New Structures

Visionary techniques include roof-top gardens and green wall systems (selected examples only)

- A. Visionary green wall on Hong Kong Museum of Art
- B. Visionary green wall on Marco Polo Prince Hotel
- C. Visionary Roof-top garden on Star Ferry Pier
- D. Visionary Roof-top garden of Harbour City
- E. Visionary green wall on Kwun Chung Street Municipality building.
- F. Visionary green wall on Hong Kong Cultural Centre
- G. Visionary Roof-top garden & green wall system on Middle Road Multi-storey carpark.
- H. Visionary green wall on buildings within the Kowloon Cricket Club grounds

* Note 1: "T" refers to the Greening Types described in the Report
 Note 2: Size and spacing of all Greening Type symbols is indicative only and does not reflect real dimensions.

LEGEND

STUDY AREA

EXISTING PLANTING

 TREE

SHRUBS

 GRASS

FOOTBRIDGE RAIL EDGE PLANTING

PROPOSED PLANTING

 PERMANENT TREES

TEMPORARY TREES

 FOCAL POINT TREES

SHRUBS

WALL PLANTING

 RAIL EDGE PLANTING

FOOTBRIDGE RAIL EDGE PLANTING

NOTE: EXISTING PLANTINGS ARE SHOWN IN LIGHT TONE

NO.	DATE	DESCRIPTION	CHECKED	APPROVED
DO NOT SCALE FROM THIS DRAWING				



香港上環干諾道中一百四十八號香港海運大廈一樓
電話：(八五二) 二六九二 五九二五 傳真：(八五二) 二六九二 二一一零
SUMMONG INVESTMENT TOWER, 148 CONNAUGHT ROAD CENTRAL, HONG KONG
TELEPHONE (852) 2692 5925 FACSIMILE 2692 2110

AGREEMENT NO. HOS 02/2004
DEVELOPMENT OF GREENING MASTER
PLAN FOR CENTRAL

SHORT TERM GREENING MASTERPLAN

NEW DRAWING NUMBER CEDD01A/4005	NEW REVISION =
------------------------------------	-------------------

DATE 27 JULY 2005	SCALE 1:2000
DESIGNED	DRAWN

TEAM	RAB
CHECKED GSC	APPROVED JSP



GREENING MASTER PLAN FOR CENTRAL - SHORT TERM PLAN

LEGEND

STUDY AREA

EXISTING PLANTING

TREES

SHRUBS

GRASS

FOOTBRIDGE RAIL EDGE PLANTING

PROPOSED PLANTING

PERMANENT TREES

FOCAL POINT TREES

SHRUBS

WALL PLANTING

FOOTBRIDGE RAIL EDGE PLANTING

GREENING OF MAJOR BUS STOPS AND TRAM STOPS

PRIVATE SECTOR BUILDINGS WITH SCOPE FOR PODIUM, ROOF, AND VERTICAL PLANTING

ROOF PLANTING ON PUBLIC STRUCTURES

GREENING OF 'TRAM ONLY' LANES

NOTE: EXISTING PLANTING, SHORT-TERM PLANTING PROPOSALS ARE SHOWN IN LIGHT TONE

NO.	DATE	DESCRIPTION	CHECKED	APPROVED
1		DO NOT SCALE FROM THIS DRAWING		



日本国際協力銀行 (JICA) 香港代表事務所
電話 (A/C) 二六二二 二六二二 傳真 (A/C) 二六二二 二六二二
IF JUNGKONG INVESTMENT COMPANY - THE COMMUNITY ROAD CENTRAL, SHANGHAI, HONG KONG
TELEPHONE 2622 2622 FAX 2622 2622

工程名稱 PROJECT
AGREEMENT NO. HOS 02/004
DEVELOPMENT OF GREENING MASTER
PLAN FOR CENTRAL

圖紙名稱 SHEET TITLE
MEDIUM TERM GREENING MASTERPLAN

圖紙編號 DRAWING NUMBER
CEDD01A/4006

日期 DATE
27 JULY 2005

比例 SCALE
1:2000

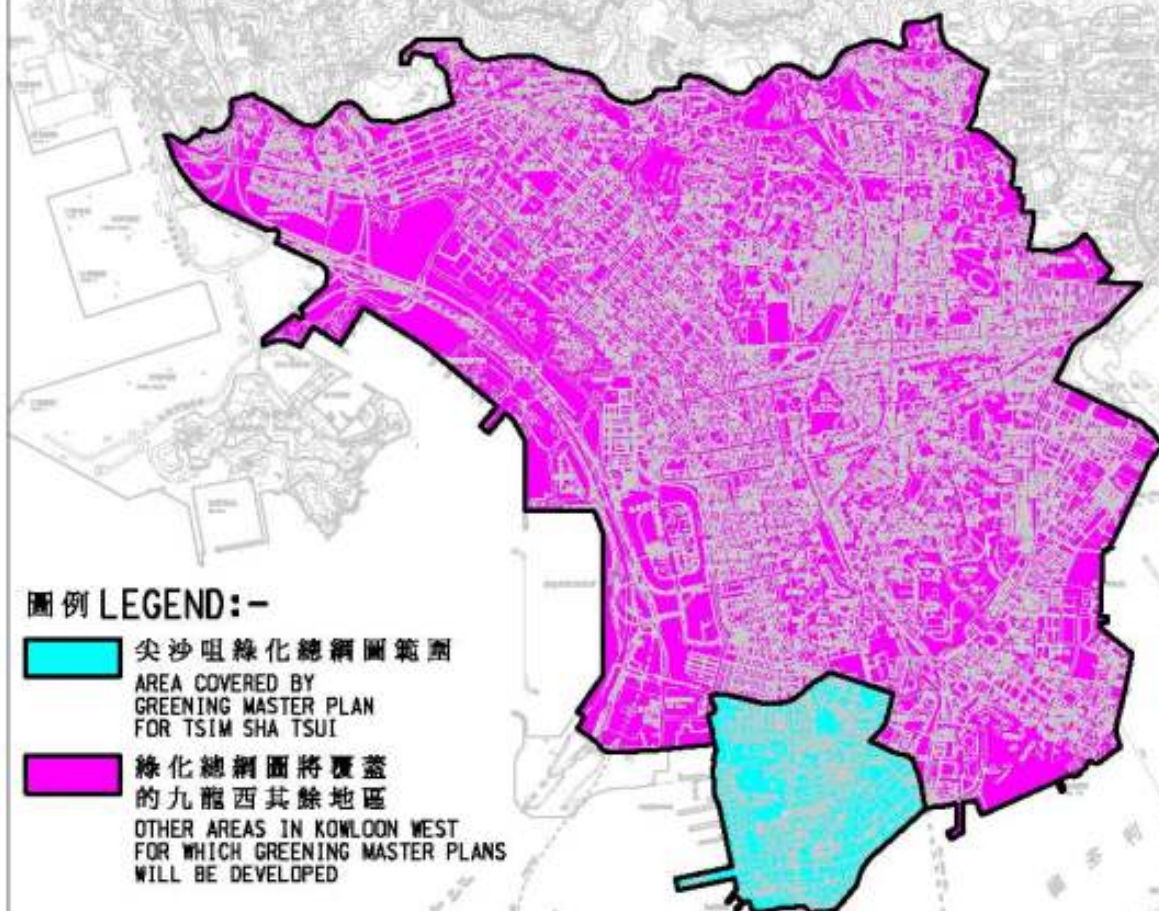
設計 DESIGNED
TEAM

繪圖 DRAWN
RAB

校核 CHECKED
GSC

批准 APPROVED
JSP

**GREENING MASTER PLAN FOR CENTRAL - MEDIUM TERM PLAN**

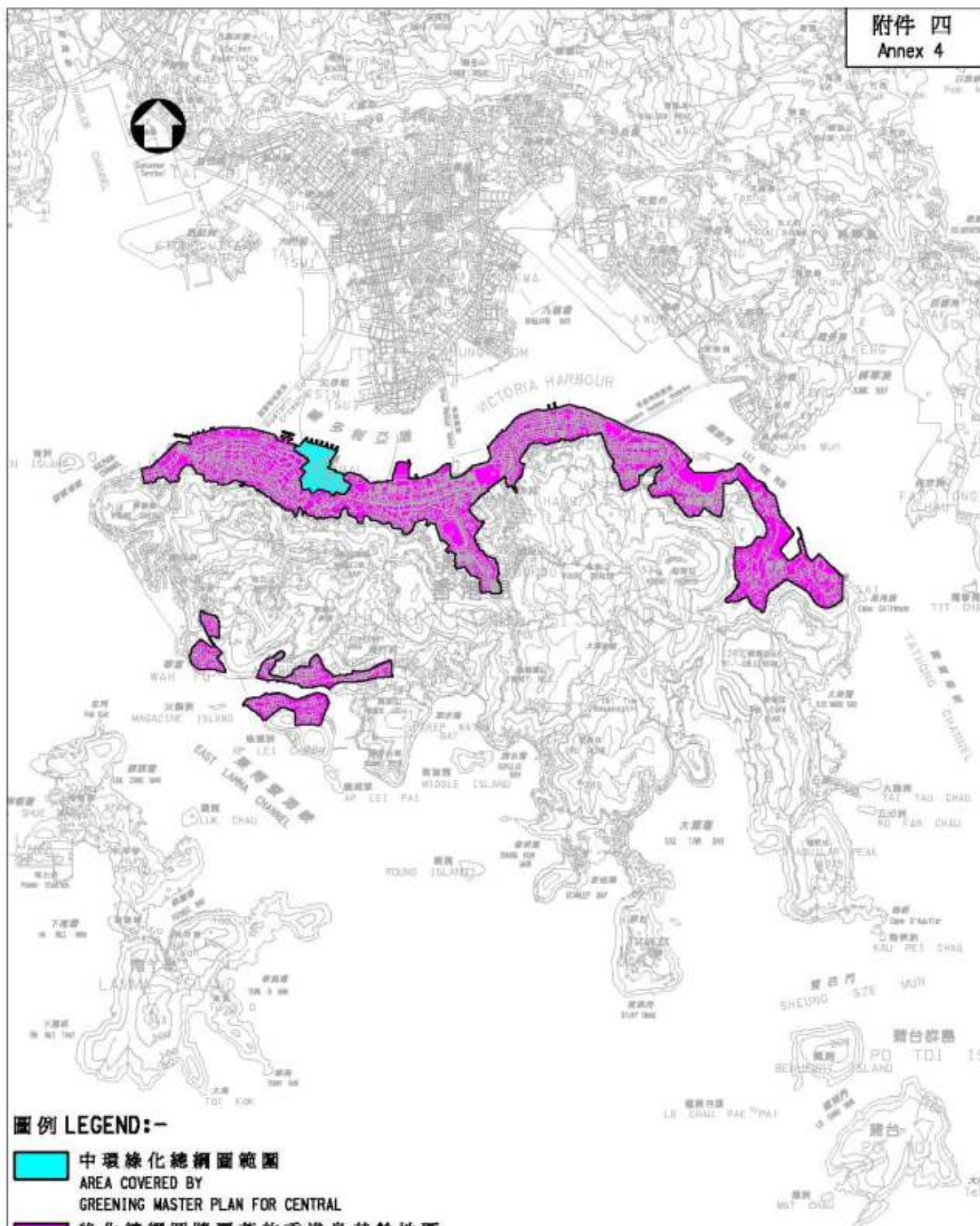


圖例 LEGEND:-

- 尖沙咀綠化總綱圖範圍
AREA COVERED BY
GREENING MASTER PLAN
FOR TSIM SHA TSUI
- 綠化總綱圖將覆蓋
的九龍西其餘地區
OTHER AREAS IN KOWLOON WEST
FOR WHICH GREENING MASTER PLANS
WILL BE DEVELOPED

版權所有，不得翻印
COPYRIGHT RESERVED

名稱 title 九龍西綠化總綱圖 - 研究及工程 GREENING MASTER PLAN FOR KOWLOON WEST - STUDIES & WORKS		姓名 name	簽署 initial	日期 date	圖則編號 drawing no.	比例 scale
	繪圖 drawn	C P SUEN		25/10/05	HQS G151	1:50000
	校對 checked	K M CHIU		25/10/05		
	核准 approved	P M CHAN		25/10/05		
	辦事處 office	總部 HEADQUARTERS				

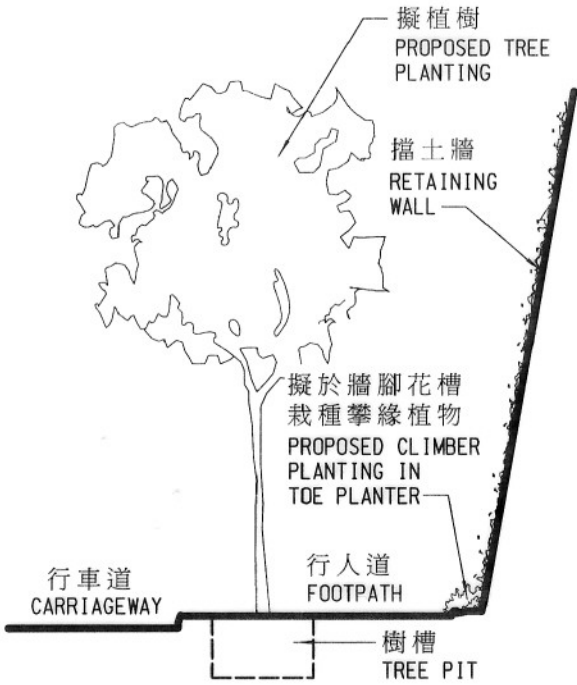


圖例 LEGEND:-

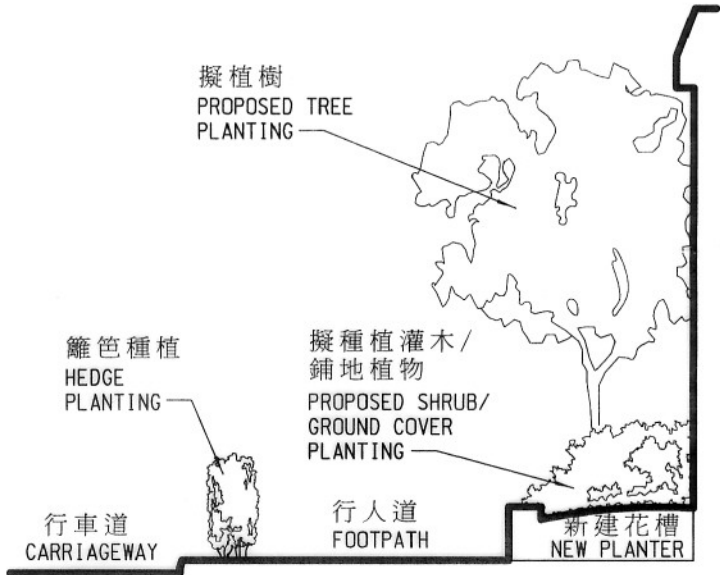
- 中環綠化總綱圖範圍
AREA COVERED BY
GREENING MASTER PLAN FOR CENTRAL
- 綠化總綱圖將覆蓋的香港島其餘地區
OTHER AREAS ON HONG KONG ISLAND FOR
WHICH GREENING MASTER PLANS WILL BE DEVELOPED

版權所有, 不得翻印
COPYRIGHT RESERVED

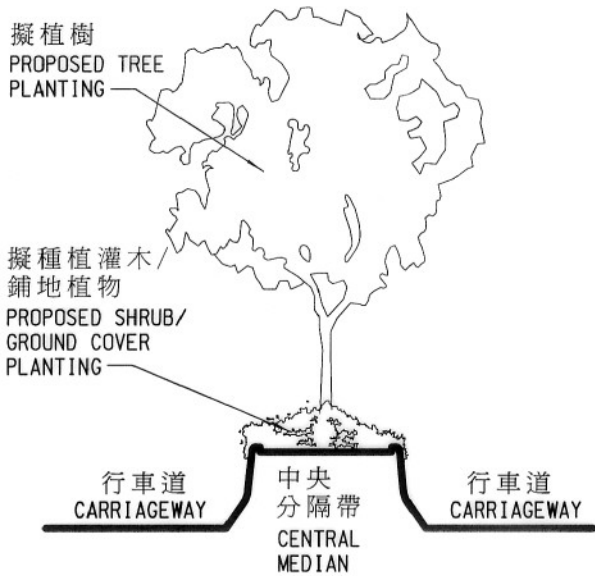
名稱 title	姓名 name	簽署 initial	日期 date	圖號 no.	日期 date	內容摘要 description	校對 checked	批准 approved
香港島綠化總綱圖 - 研究及工程 GREENING MASTER PLAN FOR HONG KONG ISLAND - STUDIES & WORKS	繪圖 drawn	C P SUEN		25/10/05	圖則編號 drawing no.	HQS G152	比例 scale	1:100000
	校對 checked	K M CHIU		25/10/05				
	校核 approved	P M CHAN		25/10/05				
辦事處 office	總部 HEADQUARTERS			土木工程拓展署 CIVIL ENGINEERING AND DEVELOPMENT DEPARTMENT				



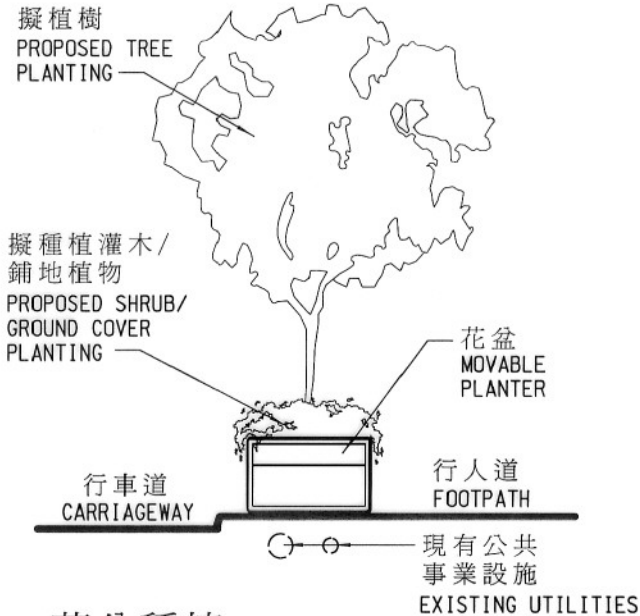
樹槽植樹/牆腳花槽種植攀緣植物
TREE PLANTING IN TREE PIT/
CLIMBER PLANTING IN TOE PLANTER



籬笆種植/花槽種植
HEDGE PLANTING/
PLANTING IN PLANTER



中央分隔帶種植
PLANTING IN CENTRAL MEDIAN



花盆種植
PLANTING IN MOVABLE PLANTER

版權所有，不得翻印
COPYRIGHT RESERVED

編號 no.	日期 date	內容摘要 description	核對 checked	核准 approved
圖則編號 drawing no.				
LW 7649				
比例 scale				
1 : 75				
土木工程拓展署 CIVIL ENGINEERING AND DEVELOPMENT DEPARTMENT				

名稱 title
綠化建議
TYPICAL GREENING
PROPOSALS

姓名 name	簽署 initial	日期 date
設計 designed		
繪圖 drawn	W T FUNG	25.10.05
核對 checked	C P WONG	25.10.05
核准 approved	M F CHIU	25.10.05
辦事處 office	土木工程處 土地工程處 LAND WORKS DIVISION CIVIL ENGINEERING OFFICE	