

Central is a **flat surface**?

All the buildings are gone!!!

Jimmy Fung (HKUST & Civic Exchange)

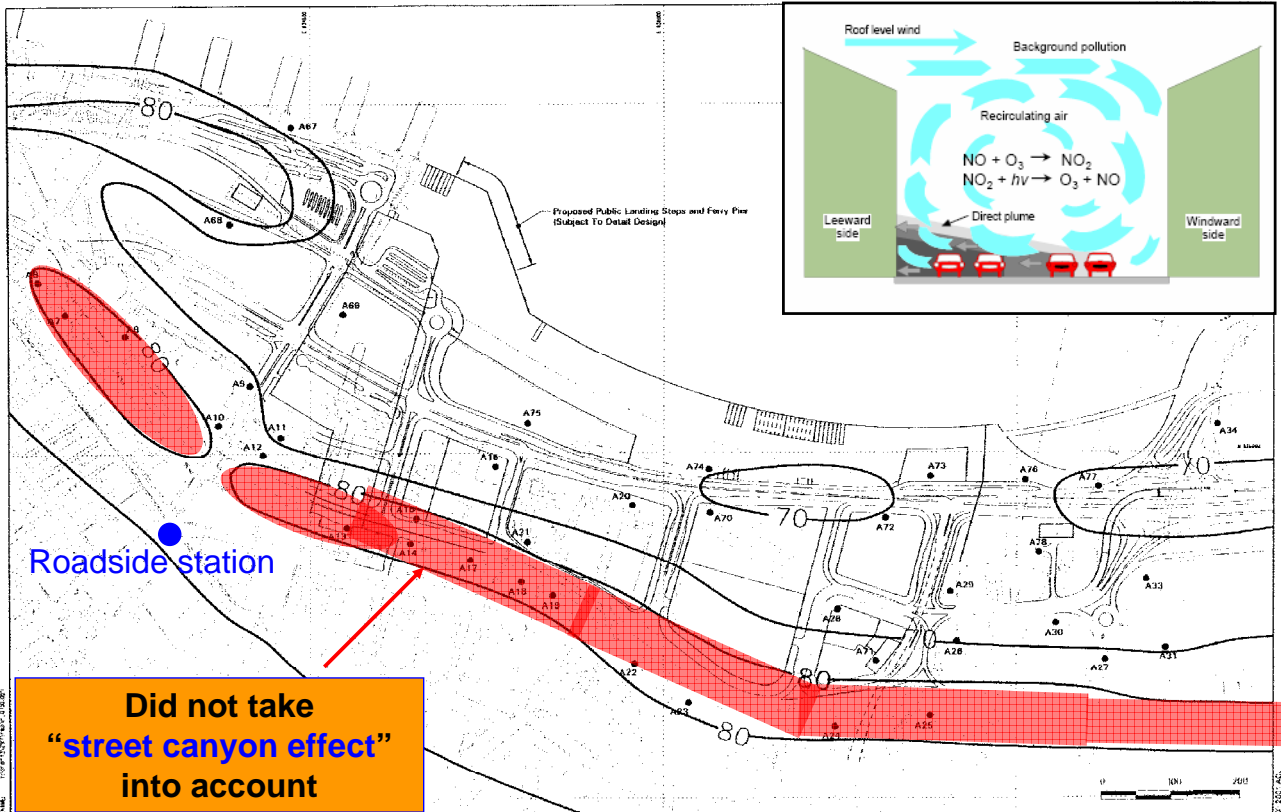


Environmental Impact Assessment Report (July 2001)

拓展署
Territory Development Department
Hong Kong

Central Reclamation, Phase III
Studies, Site Investigation, Design and Construction
SUPPLEMENTARY AGREEMENT NO. 2 TO AGREEMENT No. CE 15/94

安建顧問公司
Atkins China Ltd

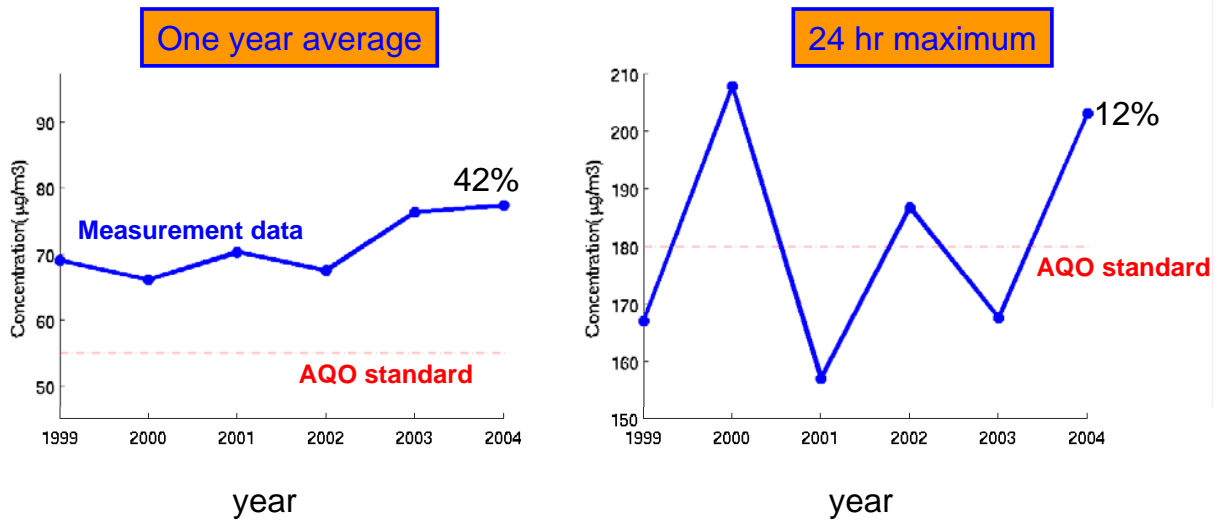


Did not take
"street canyon effect"
into account

Contours of Max 24-hour average of RSP at street level.

Figure 8.4

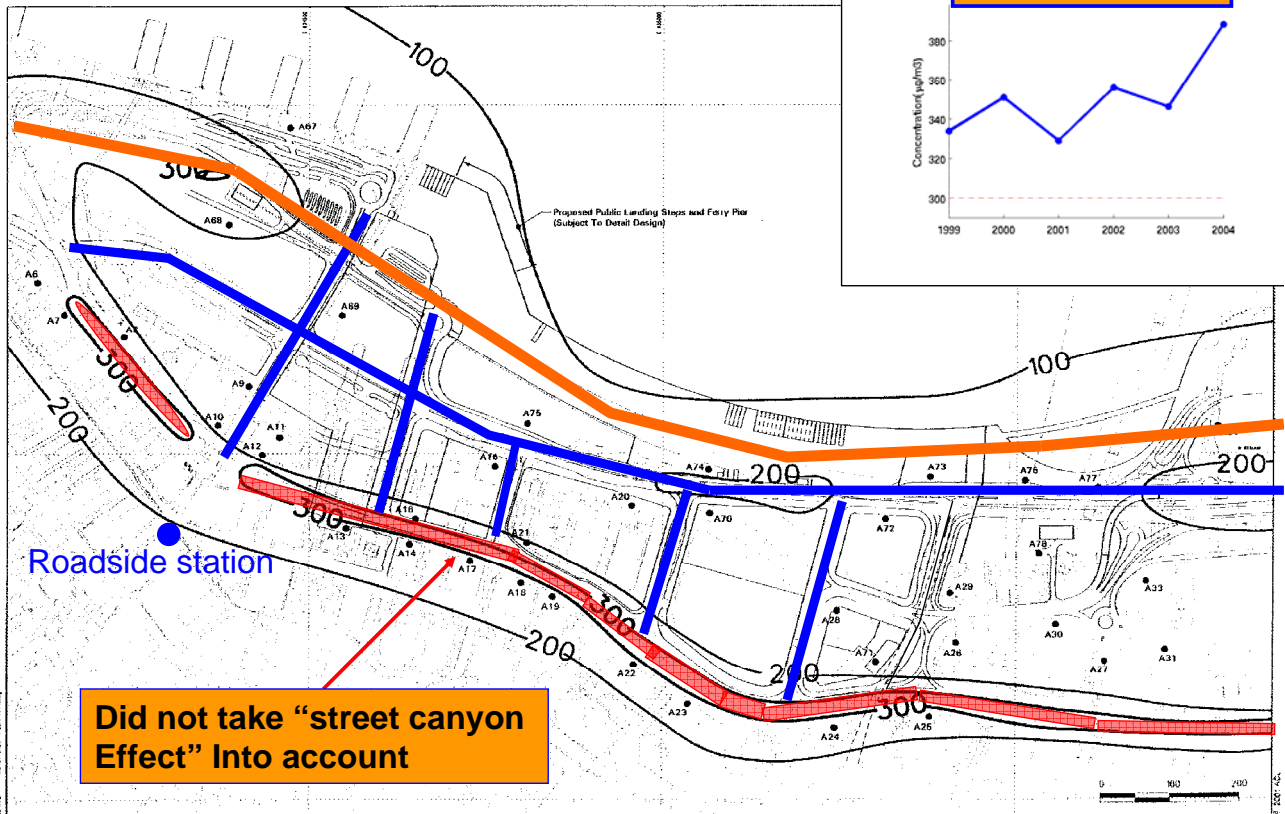
Measurement of Respirable Suspended Particulates (RSP) at Central roadsite station



Environmental Impact Assessment Report (July 2001)

拓展署
Territory Development Department
Hong Kong

Central Reclamation, Phase III
Studies, Site Investigation, Design and Construction
SUPPLEMENTARY AGREEMENT NO. 2 TO AGREEMENT No. CE 15/94

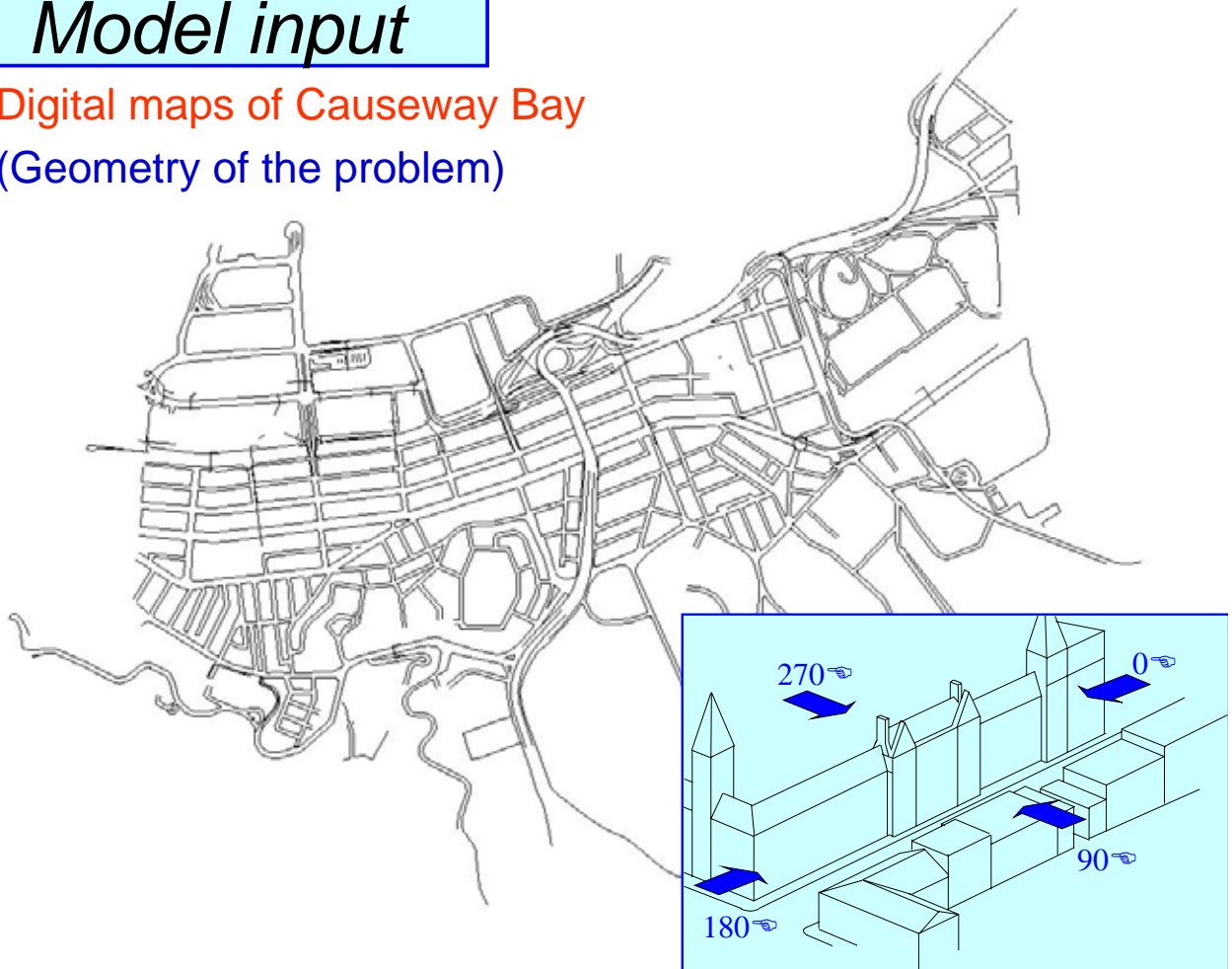


Contours of Max 1-hour average of NO₂ at street level.

Figure 8.2a

Model input

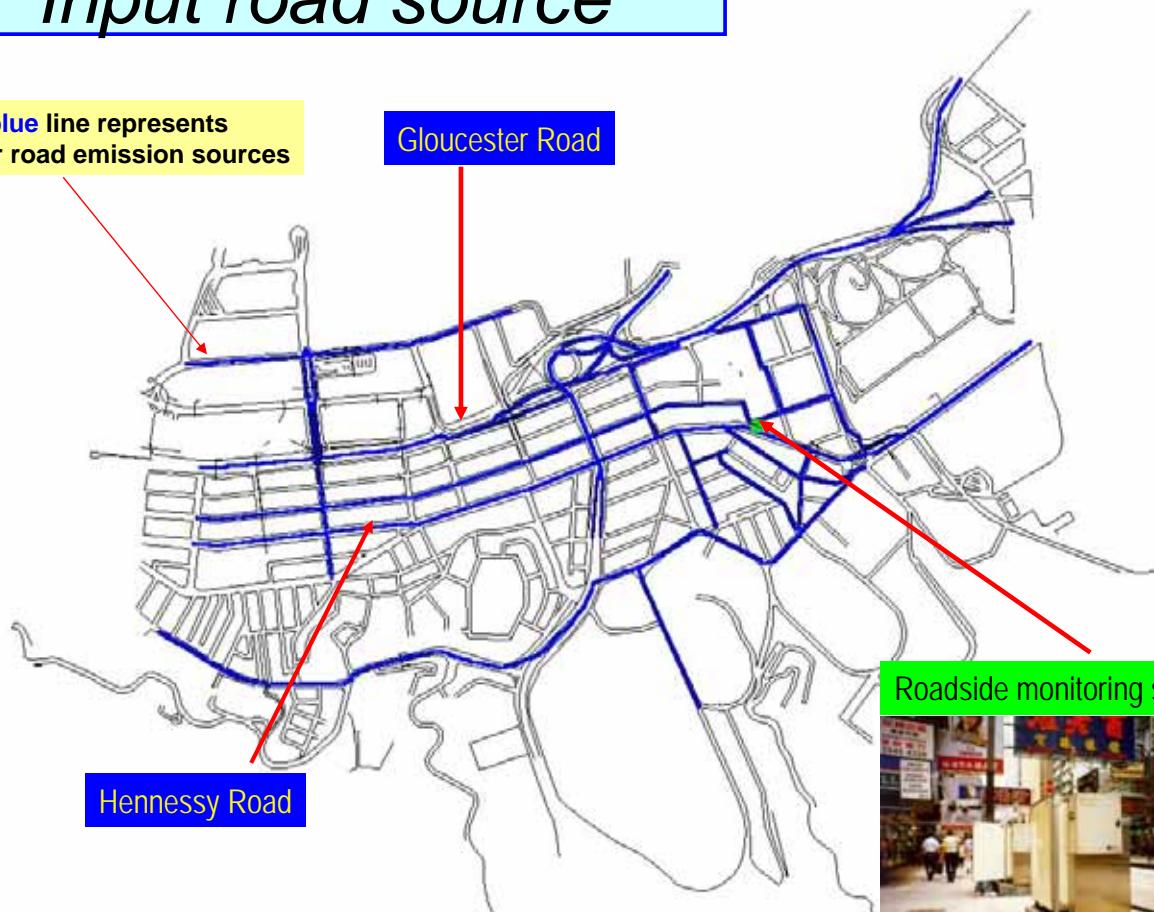
Digital maps of Causeway Bay
(Geometry of the problem)



Input road source

The blue line represents major road emission sources

Gloucester Road

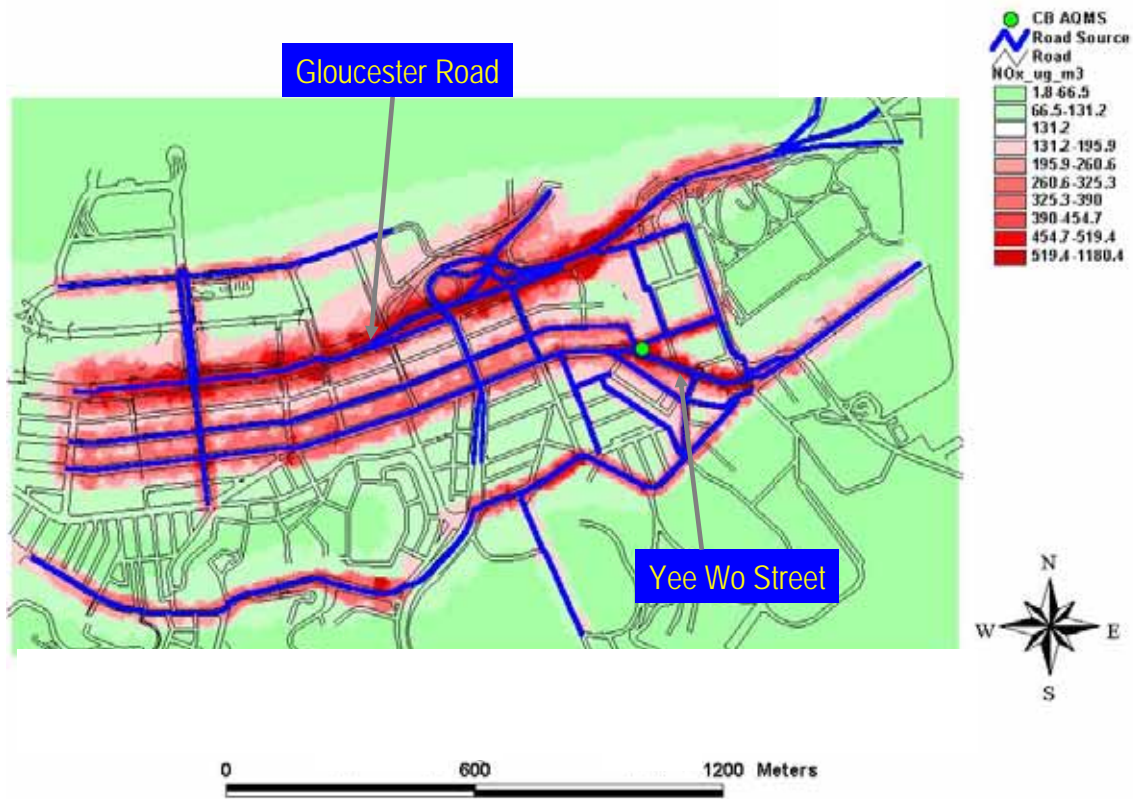


Hennessy Road

Roadside monitoring station



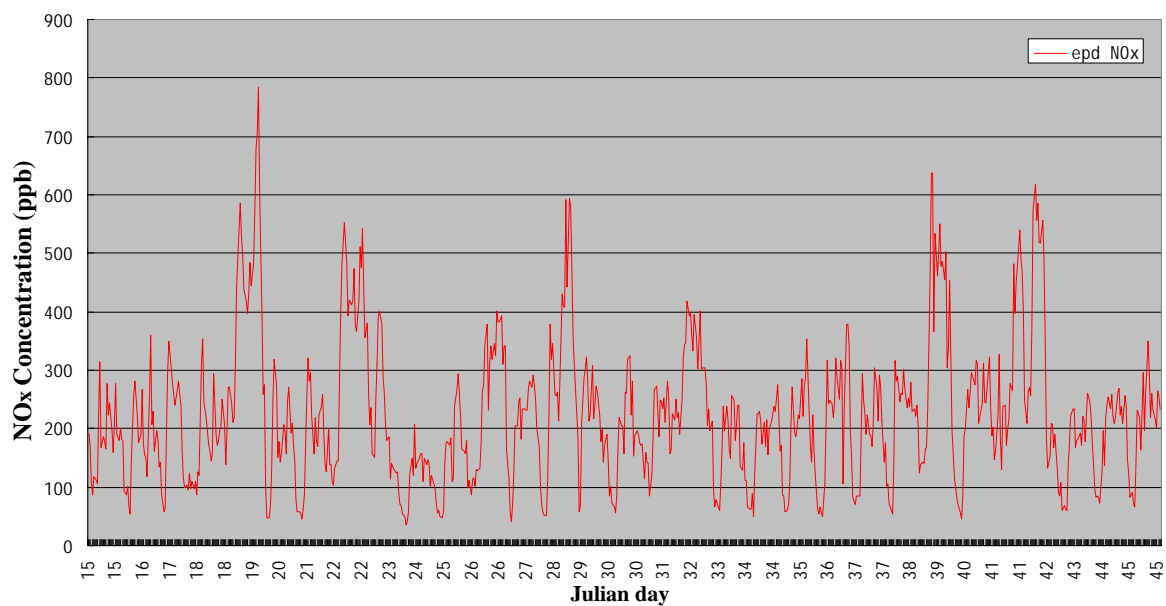
Concentration of NO_x at ground level



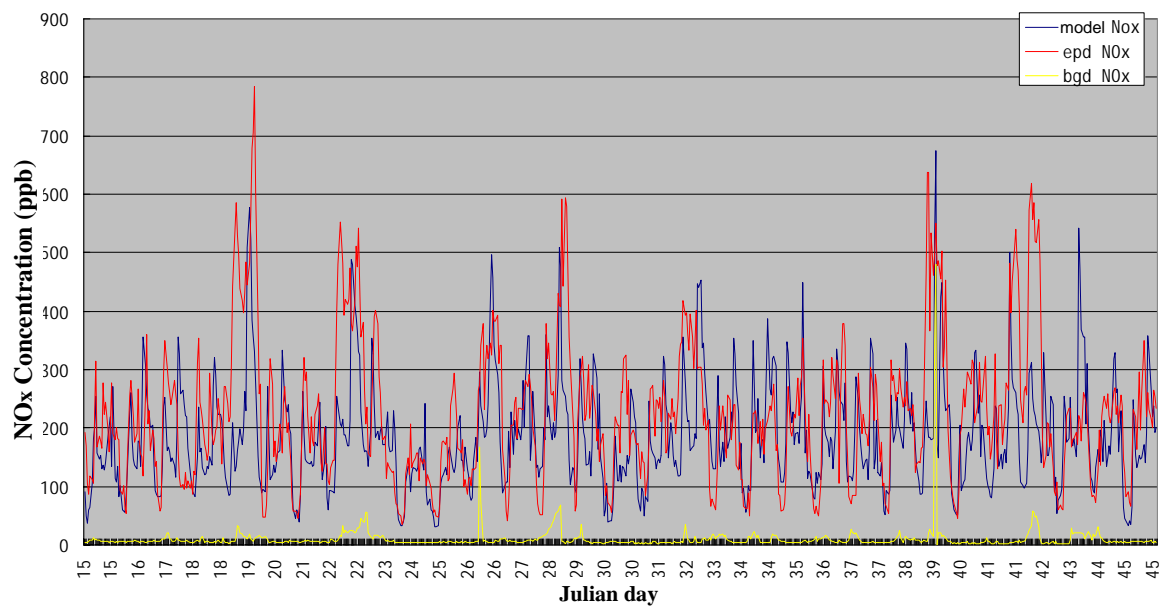
Hourly average contour output of NO_x concentration at Causeway Bay areas

Hourly concentration of NO_x from the roadside AQMS

Observational data at Causeway Bay roadside station (15 Jan – 15 Feb 2003)



Comparison between simulation and observational concentration of NO_x at the roadside AQMS



To meet AQO is to safeguard the **health** and well being of our community.

Quote from EPD website: “Possible ways to achieve and maintain AQO include **preventive measures** through **intervention in the planning stage** ...”

Our government must take a preventive measure and to do a **new Environmental Impact Assessment** for air quality for CRIII and must use a proper model that include the “**street canyon effect**” of our buildings in trapping air pollutants due to traffic road emissions ...