

# URBAN DESIGN STUDY FOR THE NEW CENTRAL HARBOURFRONT 中環新海濱城市設計研究

## Stage 1 Public Engagement 第一階段公眾參與

**Legislative Council  
Panel on Home Affairs  
Subcommittee on Heritage Conservation  
立法會民政事務委員會  
文物保護小組委員會**

**26 June 2007**

二零零七年六月二十六日



規劃署  
Planning Department

凱達環球有限公司





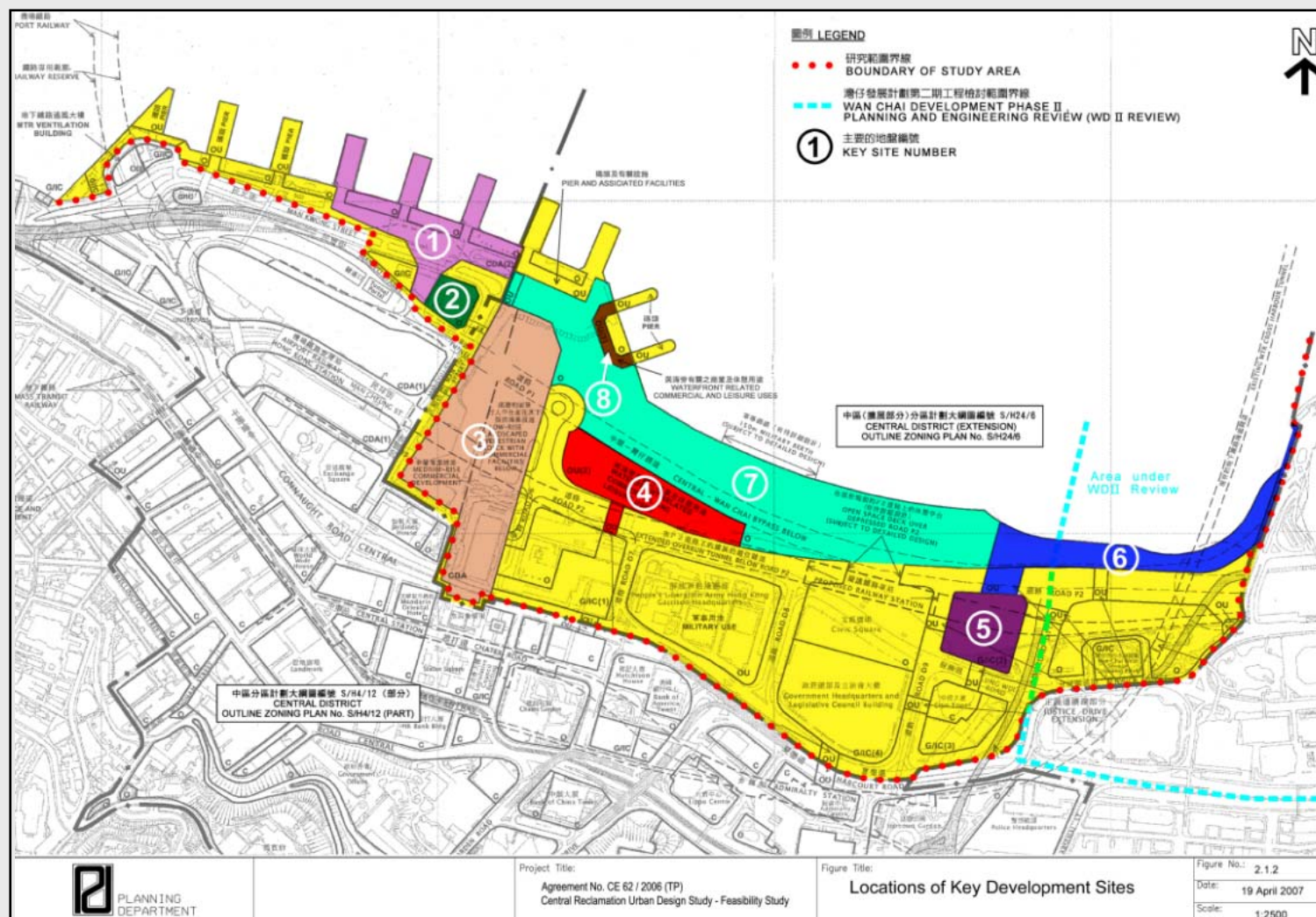
## **Study Objectives** 研究目標

- **Refine the existing urban design framework for the Central Reclamation**  
優化中環新海濱目前的城市設計大綱
- **Prepare planning/ design briefs for key development sites**  
為主要用地擬備規劃／設計綱領
- **Formulate urban design mechanisms to guide Master Layout Plans for individual sites and future developments**  
為擬備個別用地的總綱發展藍圖及未來發展提供指引



# Study Area 研究範圍

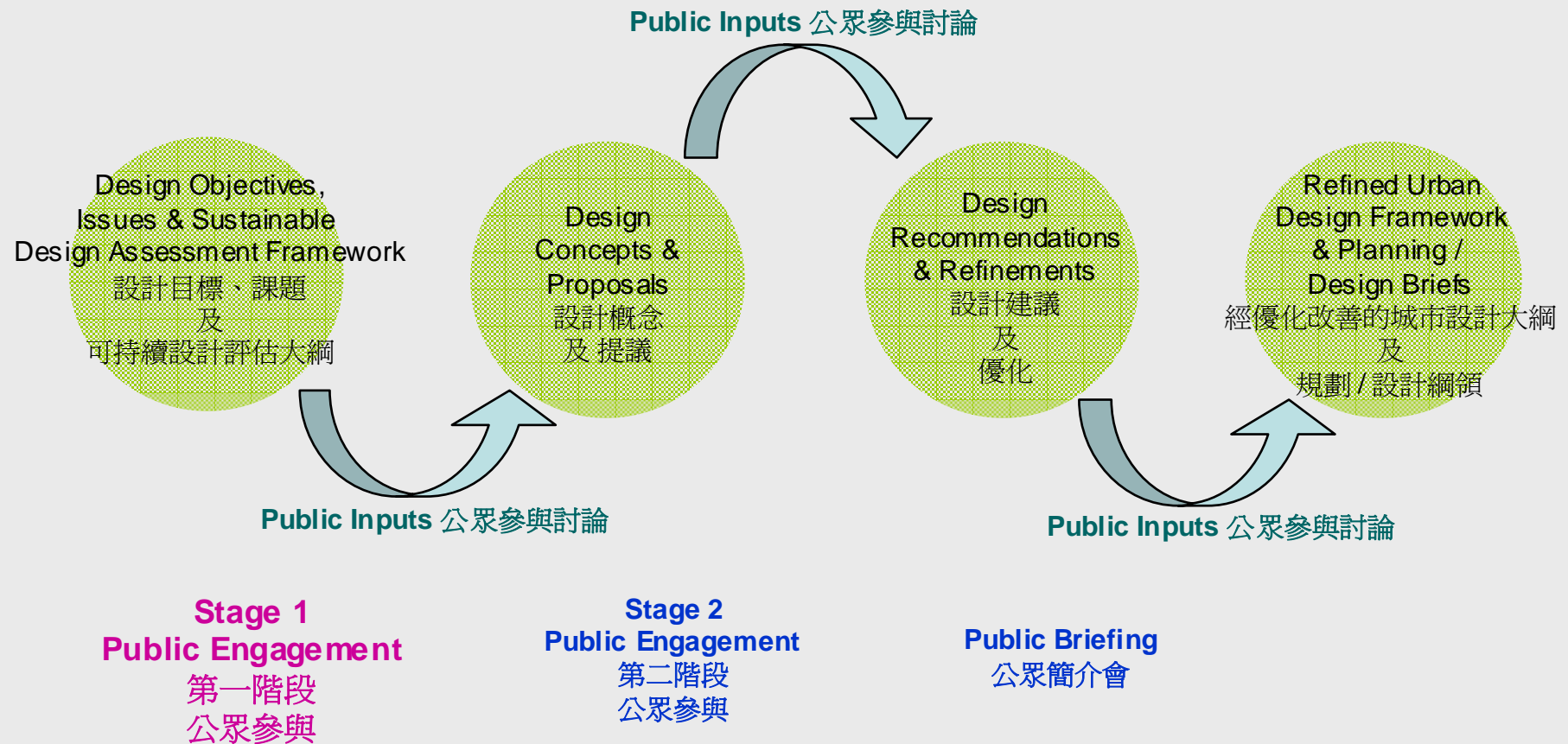
Waterfront area of CRI, CRIII, small part of WDII and adjacent hinterland  
中環填海第一期、第三期、灣仔填海第二期部份區及鄰近海岸



# Public Engagement for the Study 公眾參與

Community inputs are integrated through an open, transparent, and collaborative public engagement process

透過一個公開、透明及多方參與的研究過程，融滙公眾意見





# ***Public Engagement for the Study*** 公眾參與

Community aspirations and public views will be collated with aim to 'design with the public'

公眾參與過程將集合社會期望及公眾意見，務求達到「與公眾共同設計」的目標

## **Stage 1 Public Engagement focuses on :**

第一階段公眾參與的重點為：

- **Urban design objectives, urban design issues and sustainable design assessment framework for the Study Area and Key Sites**  
研究範圍及主要用地的城市設計目標、城市設計課題及可持續設計評估大綱
- **Possible locations and design ideas for reconstructing Clock Tower and reassembling Queen's Pier**  
重建舊天星鐘樓及重組皇后碼頭的可行地點和設計意念



# **Public Engagement 公眾參與**

## **Stage 1 Public Engagement Activities 第一階段公眾參與活動**

**城市規劃委員會  
Town Planning Board**

**共建維港委員會  
Harbour-front Enhancement  
Committee**

**立法會  
Legislative Council**

**區議會  
District Councils**

**專業團體及公眾  
Professional Bodies and  
General Public**



# ALTERNATIVE CONCEPTS FOR REASSEMBLING QUEEN'S PIER AND RECONSTRUCTING OLD STAR FERRY CLOCK TOWER

「重建舊天星鐘樓和重組皇后碼頭」的備選概念

- A number of possibilities to relate Clock Tower, Queen's Pier, City Hall precinct and the new Harbourfront

有關營造重建後的天星鐘樓、重組後的皇后碼頭、大會堂建築群及新海濱的空間關係，可能有很多組合

- Four alternative concepts explored for discussion. These are not exhaustive. We welcome comments and other ideas from the public

提出四個備選概念，以方便討論。但這些並非所有可能概念，我們歡迎公眾意見及提出其他概念

- Antiquities Advisory Board on 9 May 2007 assessed Queen's Pier to be a Grade I historical building

古物諮詢委員會在二零零七年五月九日將皇后碼頭評定為一級文物建築





## Considerations 考慮因素

- **Spatial and Historical Context** 空間及歷史關係
- **Identity** 形象獨特性
- **Functionality** 實用性
- **Accessibility** 通達性
- **Visual Prominence** 突出的視覺效果
- **Flexibility for Planning** 規劃的靈活性





## Concept A series : Queen's Pier with City Hall

### 概念系列A：維持皇后碼頭與大會堂群組的關係

#### Concept A1 : Reassembling at the Original Location

##### 概念A1: 原址重組

#### Queen's Pier 皇后碼頭

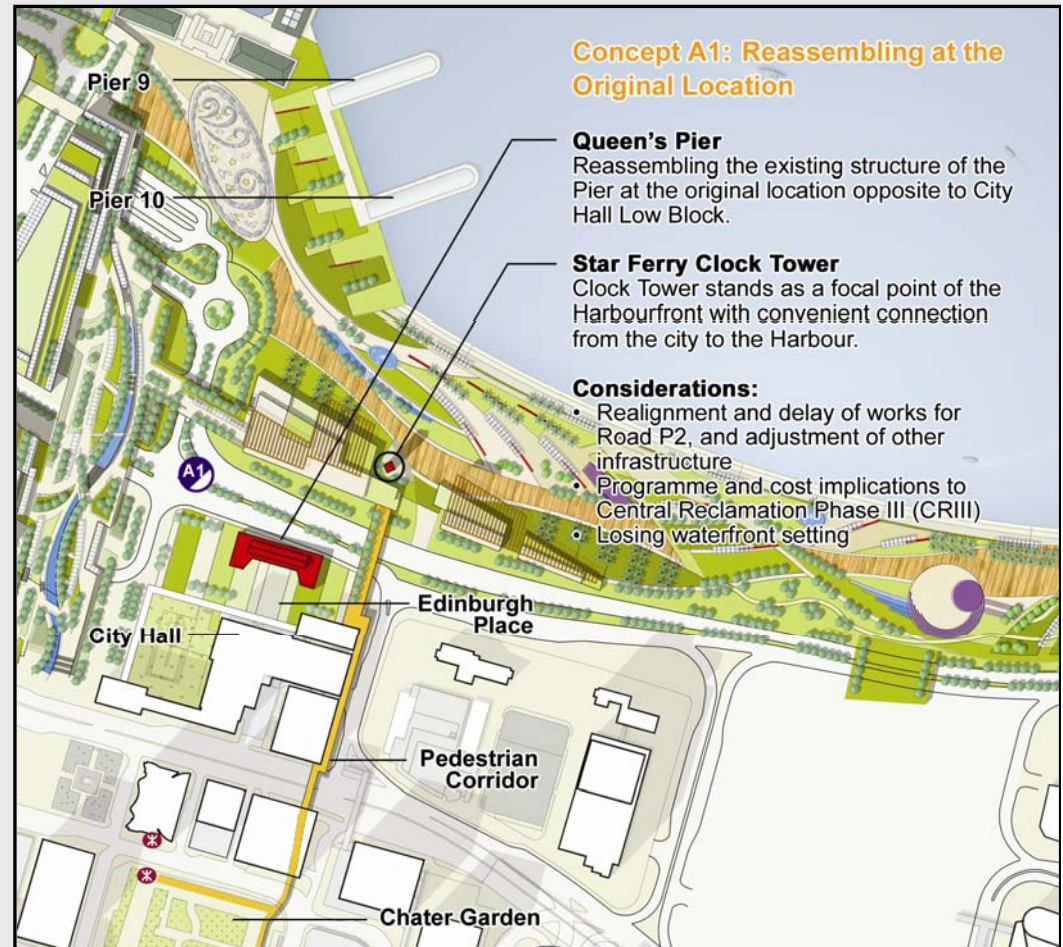
Reassembling the Pier at the original location opposite to City Hall Low Block

將碼頭重組於大會堂低座對開的原址

#### Star Ferry Clock Tower 天星鐘樓

Clock Tower stands as a focal point of the Harbourfront with convenient pedestrian access

將鐘樓豎立於新海濱作為匯聚點，並位於方便通往維港海旁的主要行人通道

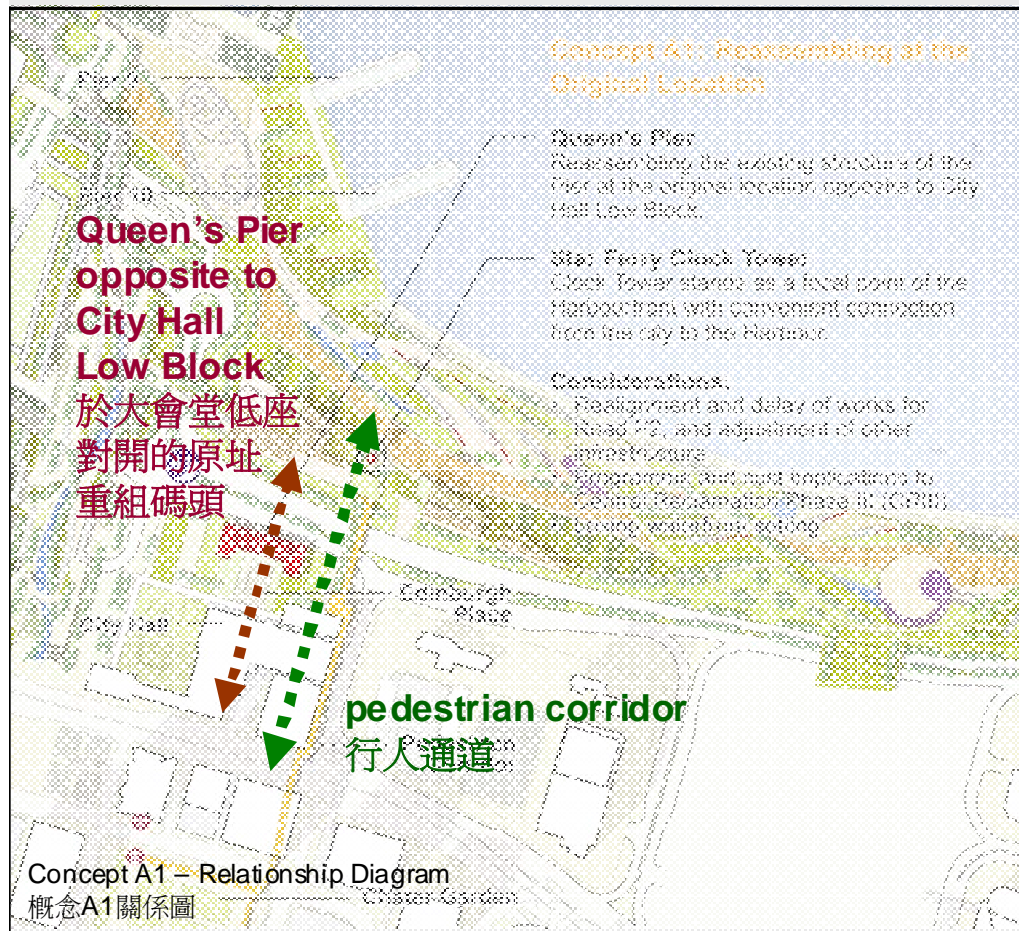


# Concept A series : Queen's Pier with City Hall

## 概念系列A：維持皇后碼頭與大會堂群組的關係

### Concept A1 : Reassembling at the Original Location

#### 概念A1: 原址重組



#### Considerations 考慮因素:

- Realignment of Road P2, and adjustment of other infrastructure  
調整P2道路的走線及其他基建工程
- Programme and cost implications to Central Reclamation Phase III (CRIII)  
影響中環第三期填海工程的進度及支出
- Losing waterfront setting  
遠離海濱



## Concept A series : Queen's Pier with City Hall

### 概念系列A：維持皇后碼頭與大會堂群組的關係

#### Concept A2: Reassembling Close to Original Location

概念A2：原址附近重組

#### Queen's Pier 皇后碼頭

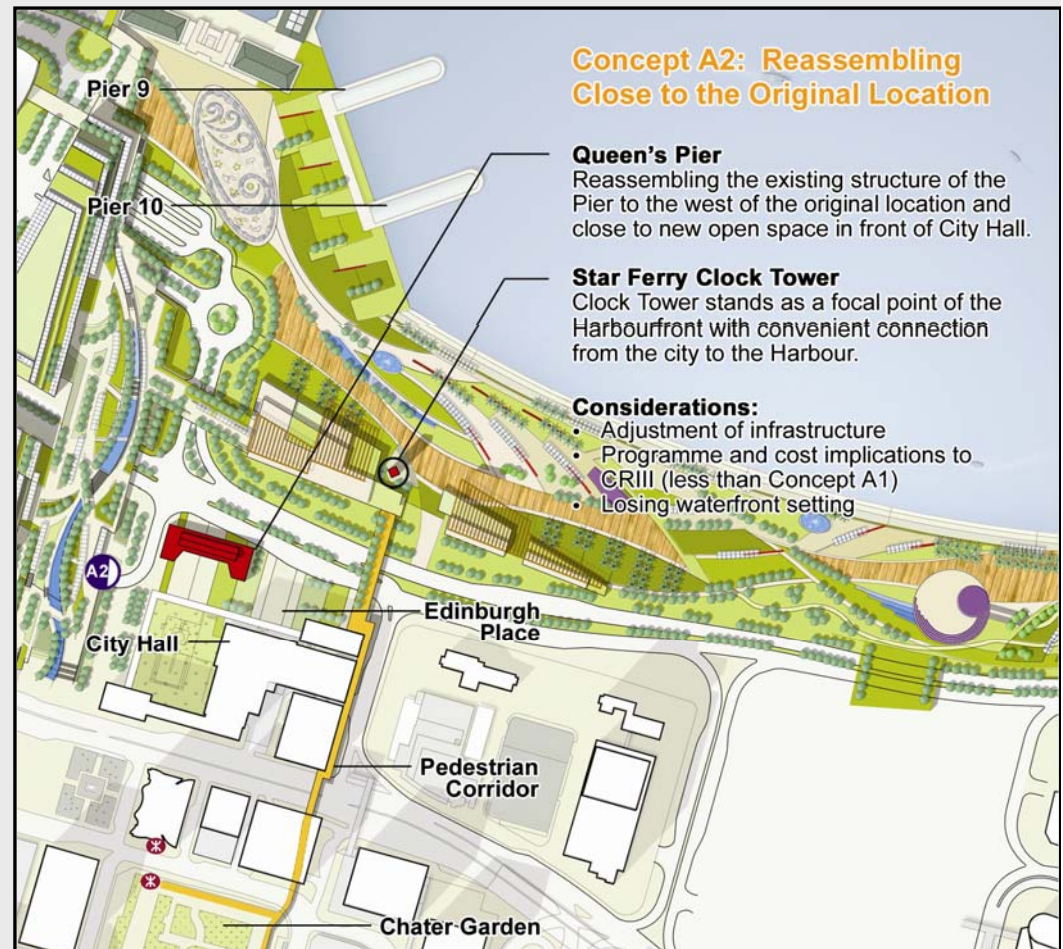
Reassembling the existing structure of the Pier to the west of the original location

將碼頭重組於原址西面

#### Star Ferry Clock Tower 天星鐘樓

Clock Tower stands as a focal point of the Harbourfront with convenient connection from the city to the Harbour

將鐘樓豎立於新海濱作為匯聚點，並位於方便通往維港海旁的主要行人通道



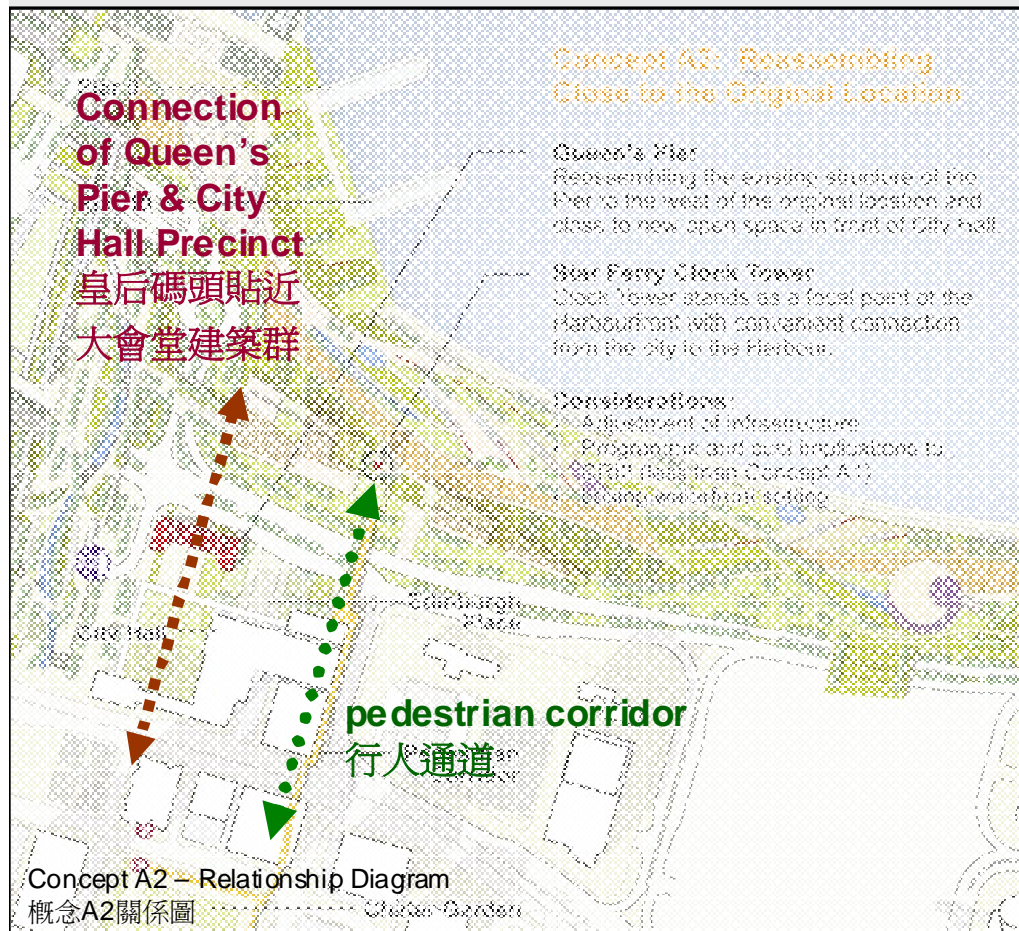


# Concept A series : Queen's Pier with City Hall

## 概念系列A：維持皇后碼頭與大會堂群組的關係

### Concept A2: Reassembling Close to Original Location

#### 概念A2：原址附近重組



Concept A2: View of Queen's Pier and Clock Tower from west of City Hall

概念A2：從大會堂以西望向皇后碼頭及鐘樓

#### Considerations 考慮因素:

- Adjustment of infrastructure 調整基建工程
- Programme and cost implications to CRIII (less than Concept A1) 影響中環第三期填海工程的進度及支出(較概念A1為少)
- Losing waterfront setting 遠離海濱

## 概念B系列：皇后碼頭靠近海濱

## 概念B1: 軸線取向

碼頭將靠近維港，座落在大會堂向海旁延伸的軸線上，並結合方便往來的行人通道。碼頭、鐘樓和大會堂連成一直線，取代原本的三角形佈局，而碼頭將成為海濱長廊的一部分

鐘樓將豎立於重組的皇后碼頭和大會堂低座之間，融合成為新海濱園景地帶的中心點



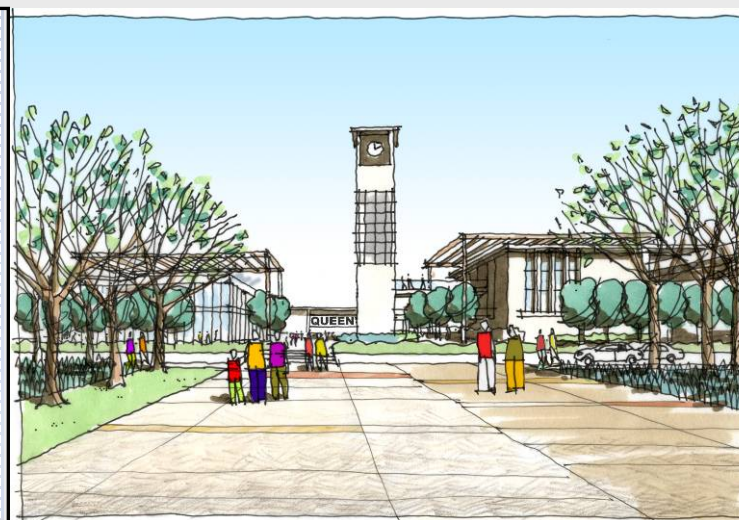
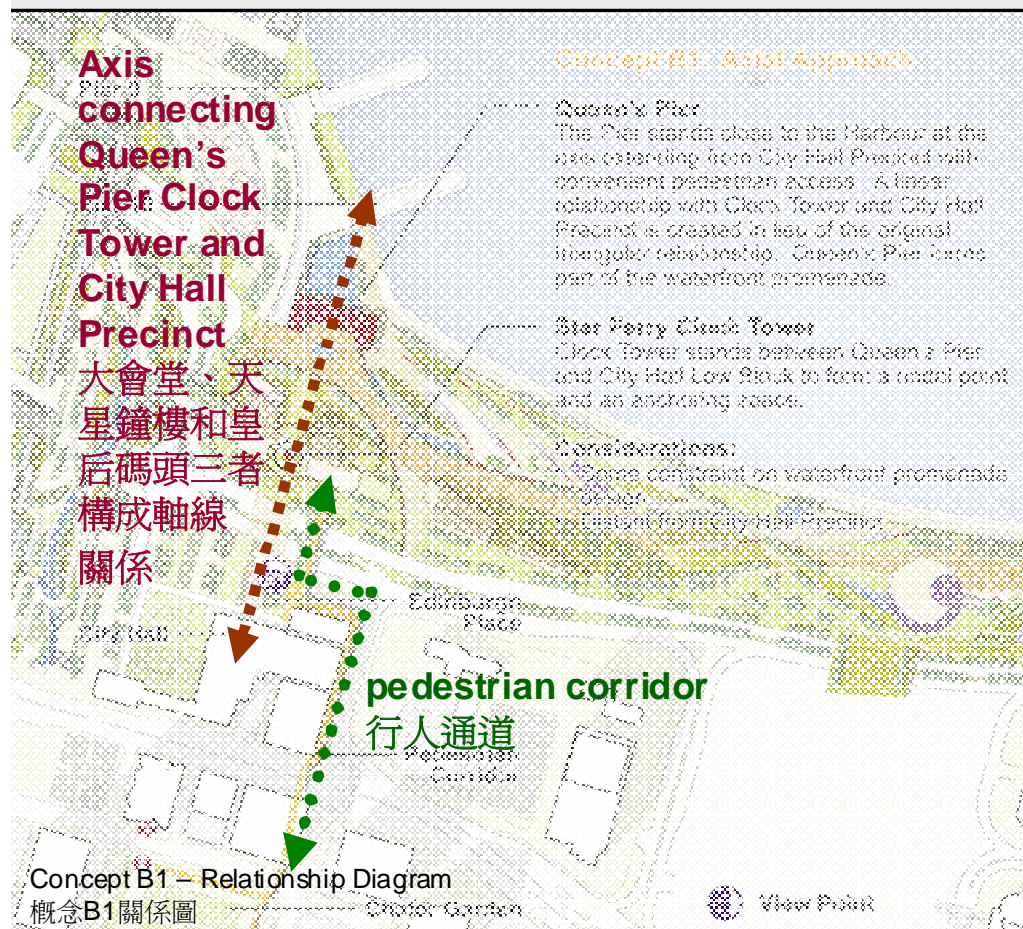


# CONCEPT B SERIES: Queen's Pier by the Harbour

## 概念B系列：皇后碼頭靠近海濱

### Concept B1: Axial Approach

#### 概念B1：軸線取向



Concept B1: View from Edinburgh Place with Queen's Pier and Clock Tower along an axis

概念B1：從愛丁堡廣場望向皇后碼頭及鐘樓的軸線

#### Considerations 考慮因素:

- Some constraint on waterfront promenade design  
影響部份海濱長廊的設計
- Distant from City Hall Precinct  
與大會堂建築群相距較遠



# CONCEPT B SERIES: Queen's Pier by the Harbour

## 概念B系列：皇后碼頭靠近海濱

### Concept B2 : Functional Approach with Marine Frontage

#### 概念B2: 臨海功能取向

#### Queen's Pier 皇后碼頭

The Pier will be reassembled between Piers 9 & 10 to form part of the piers  
碼頭將重組於九號和十號碼頭之間，成為這兩個碼頭的一部分，互相襯托

#### Star Ferry Clock Tower 天星鐘樓

Clock Tower stands as a focal point of the Harbourfront with convenient connection from the city to the Harbour  
將鐘樓豎立於新海濱作為匯聚點，並位於方便通往維港海旁的主要行人通道

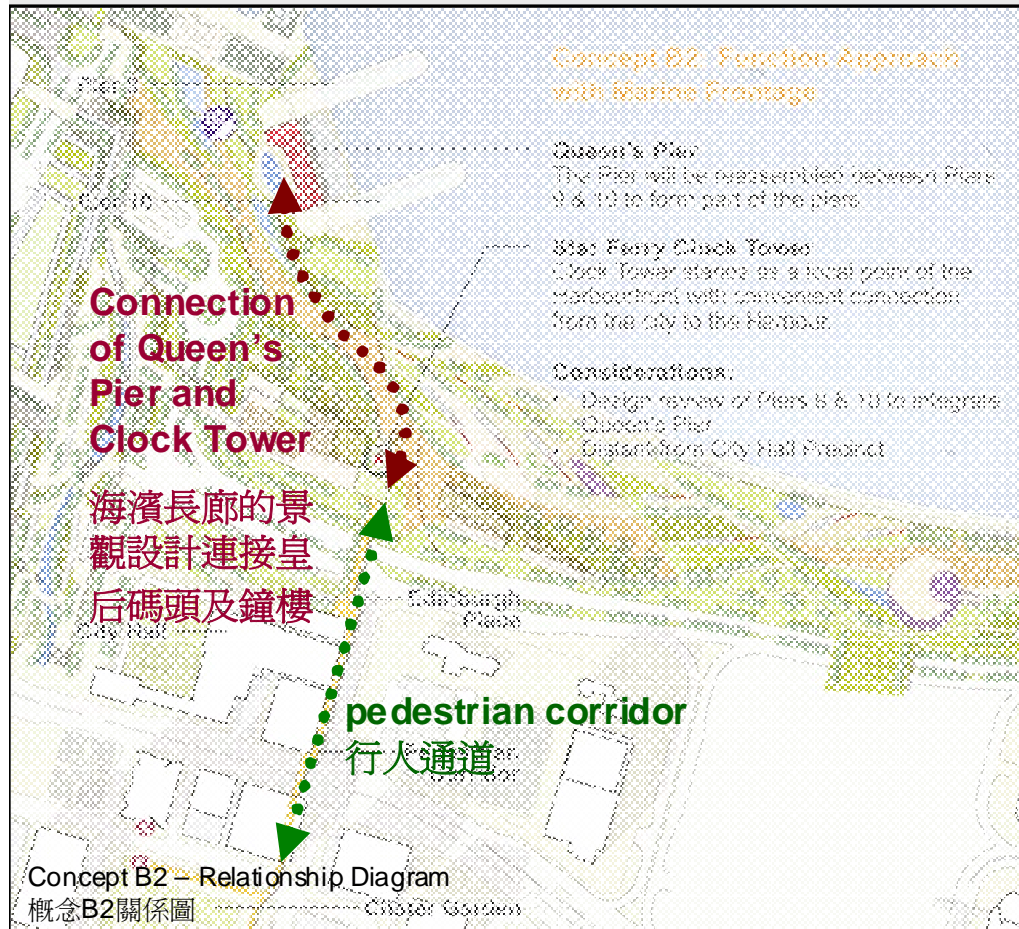


# CONCEPT B SERIES: Queen's Pier by the Harbour

## 概念B系列：皇后碼頭靠近海濱

### Concept B2: Functional Approach with Marine Frontage

#### 概念B2: 臨海功能取向



Concept B2: View of Queen's Pier reassembled between Piers 9 and 10, new plaza in front and Clock Tower

概念B2: 重置於九號及十號碼頭之間的皇后碼頭、景致宜人的綠化廣場及鐘樓

#### Considerations考慮因素:

- Design review of Piers 9 & 10 to integrate Queen's Pier  
調整九號和十號碼頭部份外觀設計，以融合皇后碼頭
- Distant from City Hall Precinct  
與大會堂建築群相距較遠



## ***Reconstructing the old Clock Tower as the focal point of new Harbourfront and pedestrian corridor*** **重建後的鐘樓將成為新海濱及行人走廊的焦點**



- **Clock Tower as the focal point of the New Central Harbourfront and pedestrian corridor**  
鐘樓為海濱和城市中心提供視線上的聯繫
- **The retained clock faces, chimes and mechanical parts of Star Ferry Clock Tower will be reassembled in the reconstructed Clock Tower**  
舊鐘樓所保留的鐘面、銅鐘及機械部分將在重建鐘樓時重新組裝
- **A gallery may be built adjacent to the reconstructed Clock Tower to exhibit the salvaged items of old Star Ferry Pier**  
鐘樓毗連位置設置展覽廊，展出舊天星碼頭的保存組件



## **WELCOMING YOUR VIEWS** 歡迎提出意見

**We welcome your views and suggestions on:**

我們歡迎大家發表意見及提出建議：

- **Possible Locations and Ideas for Reassembling Queen's Pier and Reconstructing Old Star Ferry Clock Tower.**  
重建舊天星鐘樓和重組皇后碼頭的選址和設計意念。
- **Public views will help to formulate proposals for the refined urban design framework, planning / design briefs for key sites, and locations and ideas related to Queen's Pier and the Clock Tower. The public will be further engaged in the Stage 2 Public Engagement.**  
公眾意見有助就優化現有城市設計大綱、主要用地的規劃／設計綱領及皇后碼頭與鐘樓有關的選址和設計意念，作出建議，在第二階段公眾參與諮詢公眾。

***Thank You***  
**多謝**