

CB(1)1866/06-07(01)

# *Revised Concept Plan*

*for*

*Lantau*

大嶼山



*Lantau Development Task Force*  
*The Government of the Hong Kong Special Administrative Region*  
*May 2007*

## **Background**

- **2004 Concept Plan for Lantau**
  - To provide an overall planning framework for the future development of Lantau under a balanced and sustainable approach
- **Public Consultation**
  - From Nov 2004 to Feb 2005
  - Public Consultation Report released in Nov 2005



## **Major Public Comments & Suggestions**

- Support the overall planning vision and development concept
- Agree that the economic infrastructure proposed at North Lantau would benefit Hong Kong's economy
- General support for turning Lantau into a tourism, recreation and leisure outlet
- Strong support for the countryside recreation and nature-based attractions in rural Lantau



## **Major Public Comments & Suggestions (cont'd)**

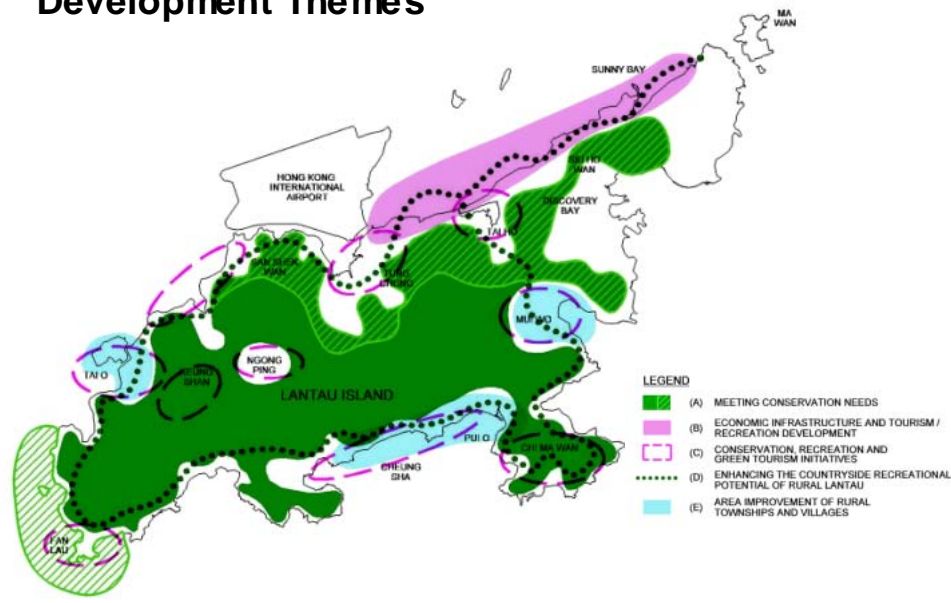
- Strong support for local improvement works in Mui Wo and Tai O
- General consensus on promoting local tourism and facilitating better enjoyment of the beaches at South Lantau
- Calls for extending the conservation proposals to cover the heritage and landscape aspects in addition to nature conservation

## The Revised Concept Plan

- **Overall Planning Vision Retained**
  - To promote sustainable development by balancing development and conservation needs
- **Broad Development Concept**
  - Development of major economic infrastructure and tourism uses in North Lantau
  - The rest of Lantau to be preserved for nature conservation and environmentally sustainable recreational uses

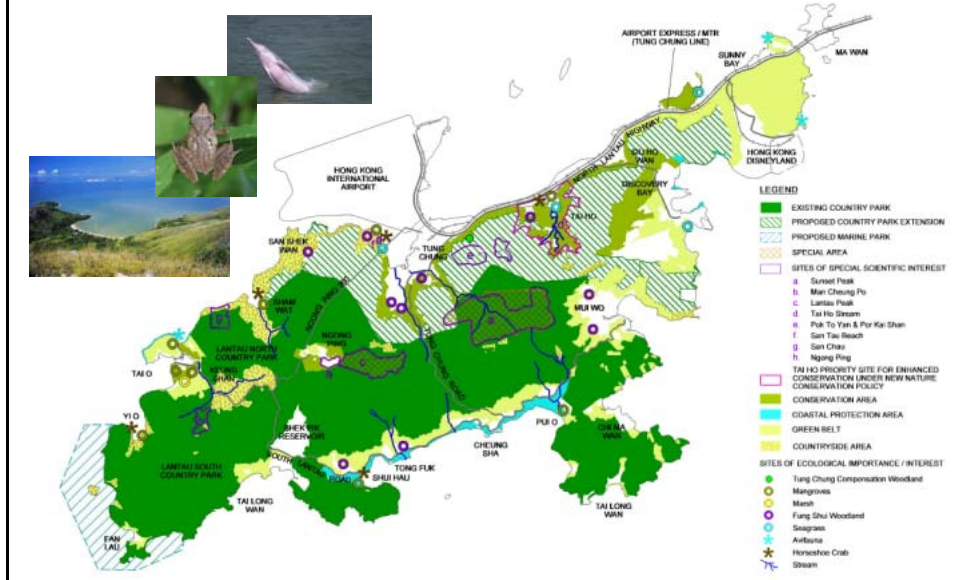
## Key Revisions

### Development Themes



# Meeting Conservation Needs

## Nature Conservation



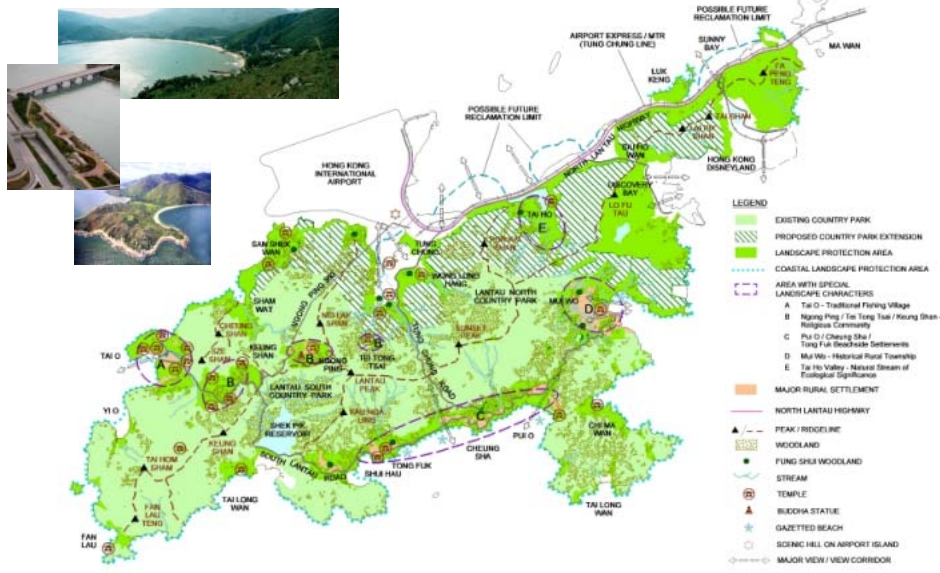
# Meeting Conservation Needs (cont'd)

## Heritage Conservation

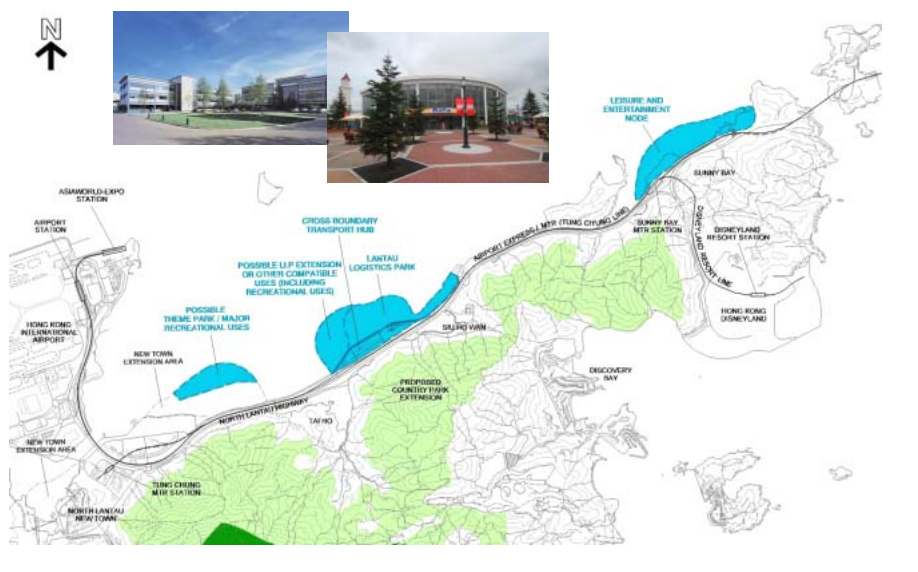


# Meeting Conservation Needs (cont'd)

## Landscape Conservation



# Economic Infrastructure & Tourism / Recreation Development

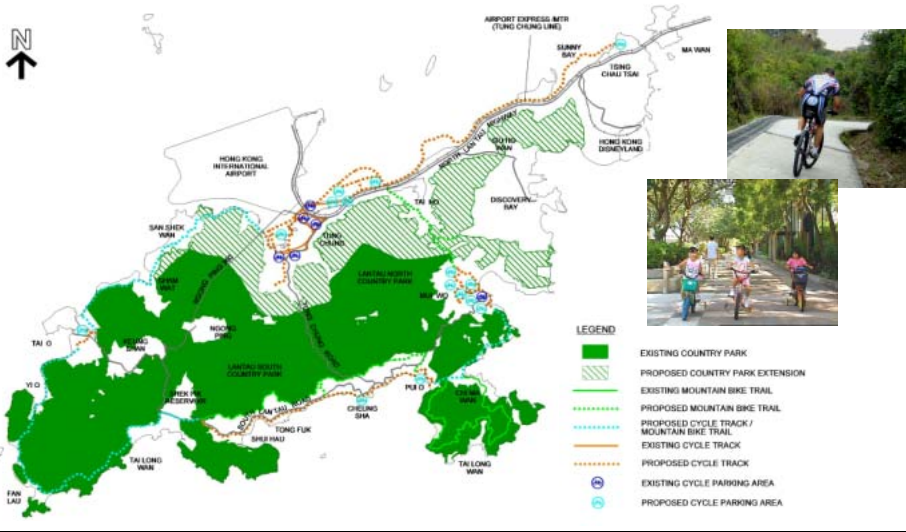


# Conservation, Recreation & Green Tourism Initiatives



# Enhancing The Countryside Recreational Potential of Rural Lantau

## Cycle Tracks & Mountain Bike Trails



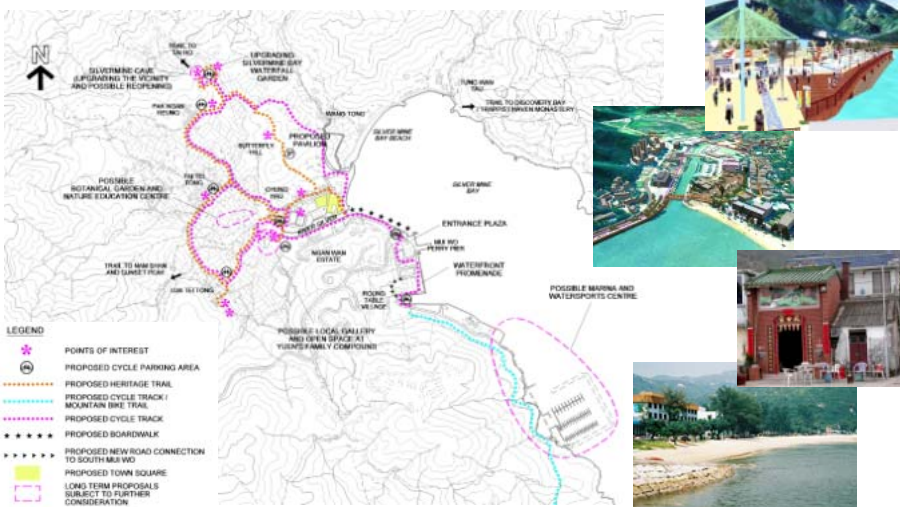
# Enhancing The Countryside Recreational Potential of Rural Lantau (Cont'd)

## Triathlon Race Course at South Lantau



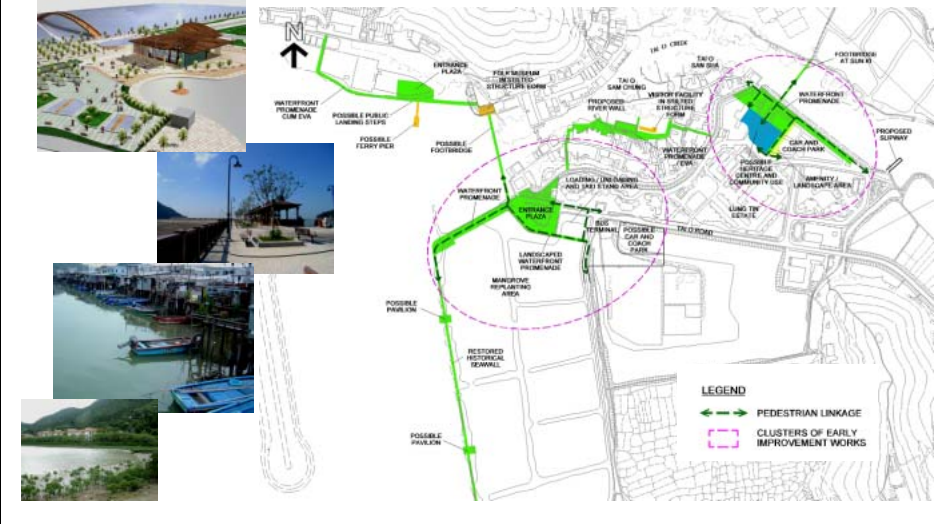
# Area Improvement of Rural Townships & Villages

## Facelift of Mui Wo



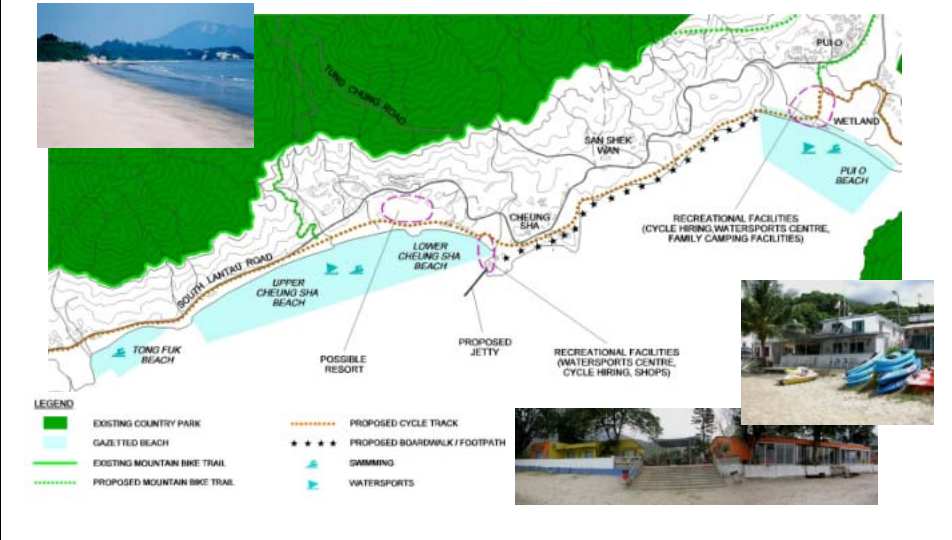
# Area Improvement of Rural Townships & Villages (cont'd)

## Improvement Works at Tai O



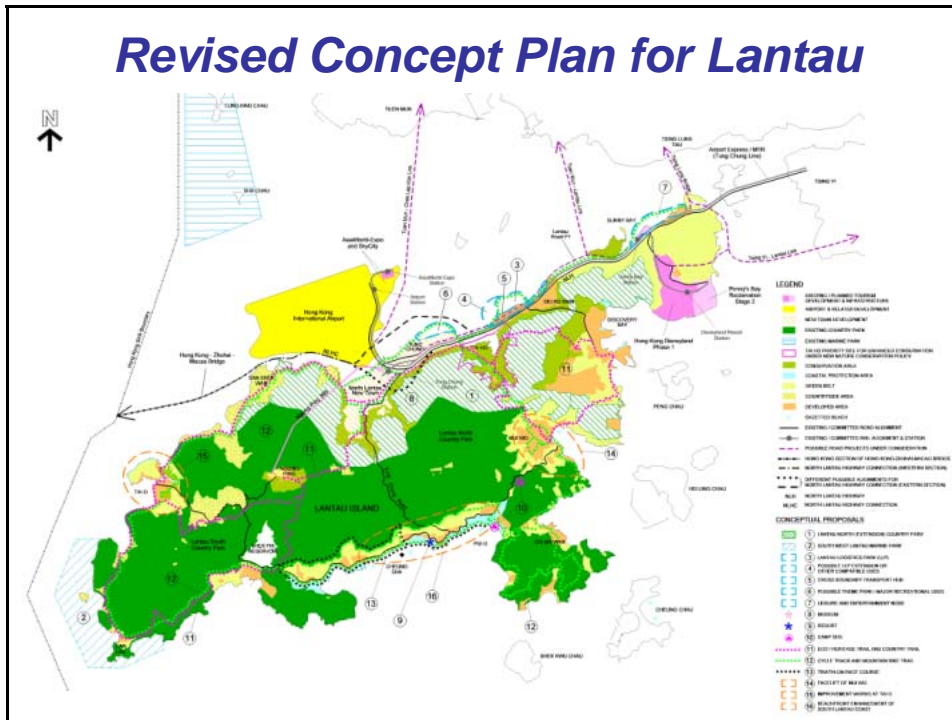
# Area Improvement of Rural Townships & Villages (cont'd)

## Beachfront Enhancement of South Lantau Coast





## Revised Concept Plan for Lantau



## Preliminary Assessments

- Sustainability Assessment
- Strategic Environmental Assessment
- Social Implications
- Transport Implications



## ***Way Forward***

- Proposals still require further feasibility studies
- Priority to take forward proposals that can stimulate the local community and improve people's livelihood
- Deliberate the implementation model and timetable for projects with implications for long-term economic development
- Continue to involve the community in the development process



## ***Thank you***

