

CB(1)457/07-08(07)



# Tariff Review 2008 電費檢討

Presentation to:  
立法會 Legislative Council



## 電價調整

## Tariff adjustment

組成部份 每度(仙)	2007	變化 Changes +/-	2008	Components ¢/kWh
平均基本電價	114.3	2.6	116.9	Average Basic Tariff
燃料附加費	5.9	4.6	10.5	Fuel Clause Surcharge
平均電價	120.2	7.2 +6.0%	127.4	Average Tariff



# 燃煤價格升幅

2007年1月至11月

# Increase in coal price

From Jan to Nov 2007

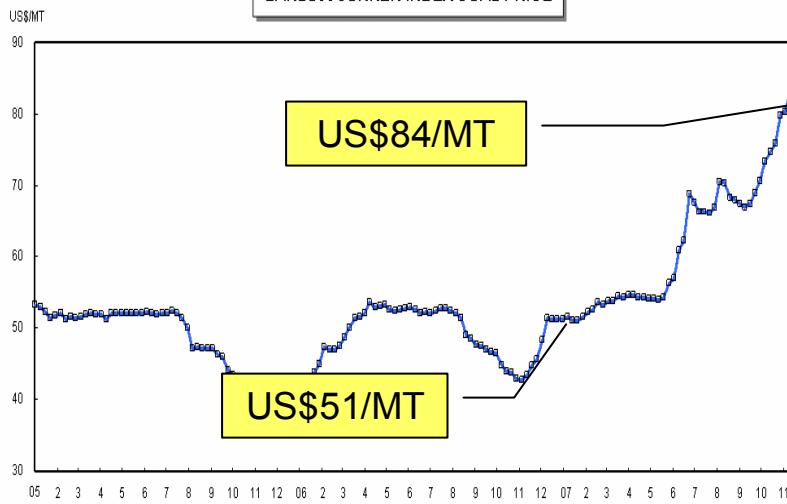
離岸價	+US\$33/MT (+65%)	FOB price
運費	+US\$12/MT (+80%)	Freight charges
到岸價	+US\$45/MT (+68%)	CIF price

離岸價 FOB

運費 Freight

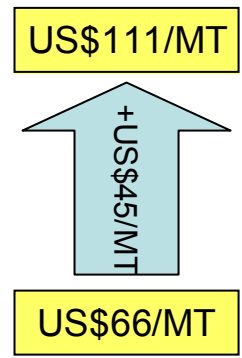
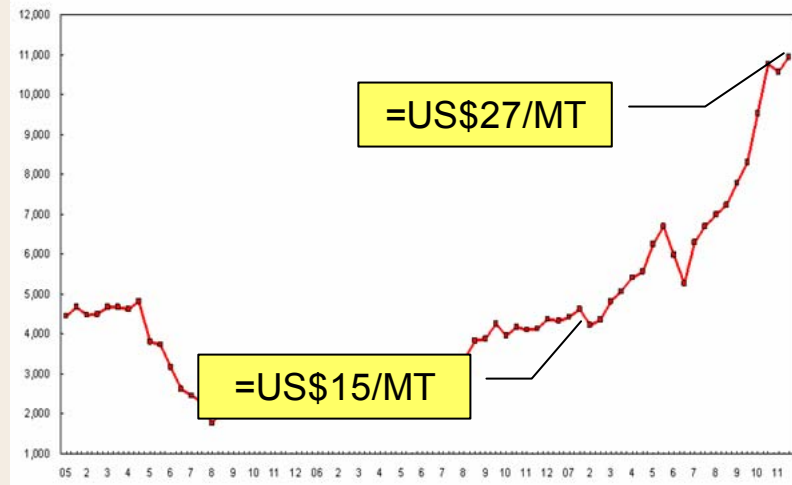
到岸價 CIF

BARLOW JONKER INDEX COAL PRICE



Source: www.coalportal.com

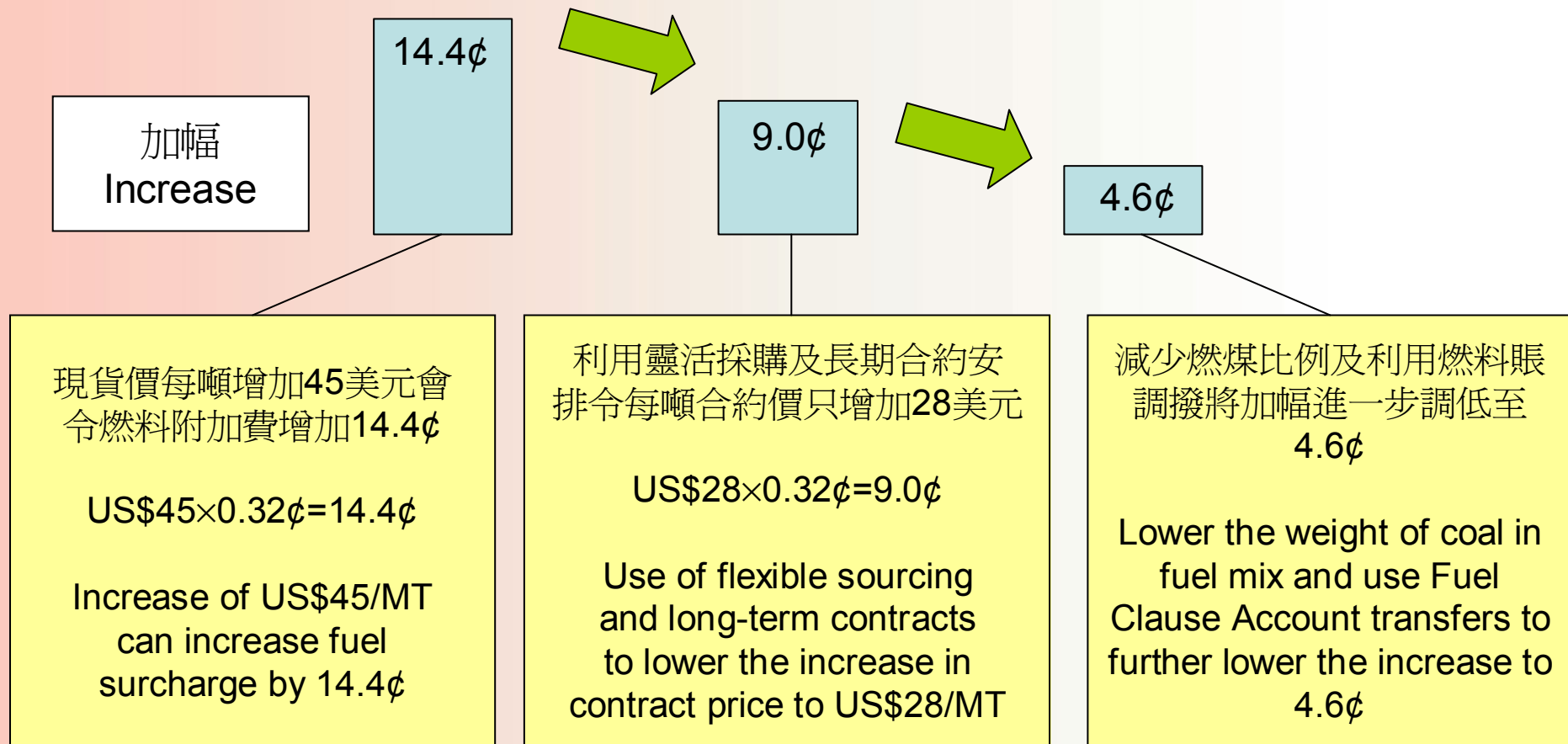
BALTIC DRY INDEX



Source: www.ssyonline.com



## 降低燃料附加費調整幅度 Minimising fuel surcharge adjustment





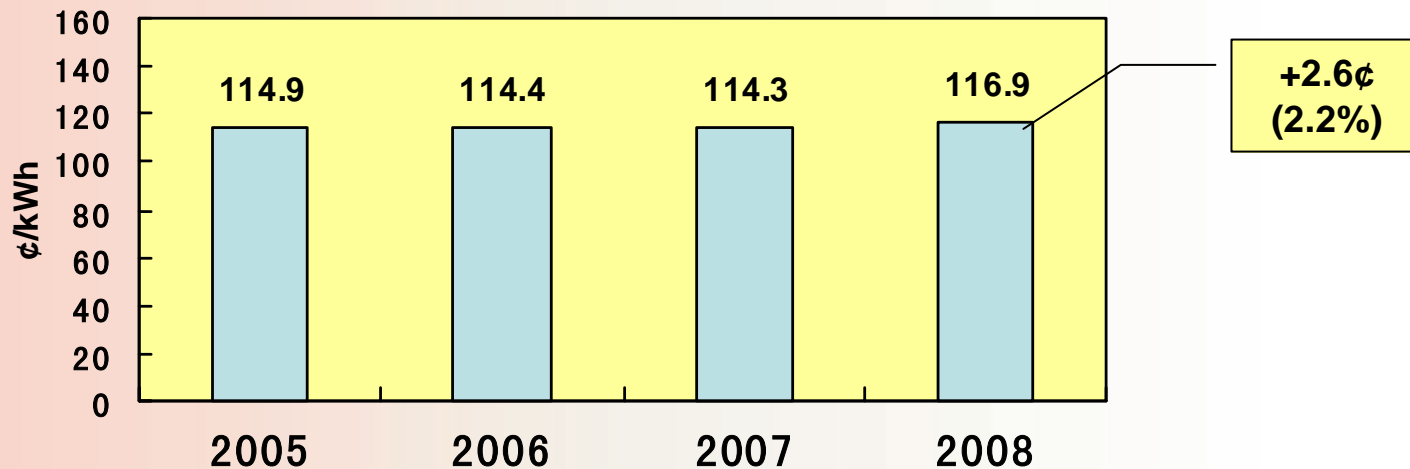
## 基本電價調整

- 自2005年以來首次調高基本電價，以配合發電，輸配電及環保項目的投資
- 自2003年以來，因控制加幅，基本電價均低於應有水平
- 過去五年，准許利潤一直不達應有水平

## Basic tariff adjustment

- First increase since 2005 for investments in power generation, transmission & distribution and environmental measures.
- Tariffs have been lower than entitled level since 2003 following efforts to curb tariff increase.
- Shortfalls in permitted return recorded for past 5 years.

基本電價 Basic Tariff





## 對客戶的影響

## Effect on customers

### 家庭客戶 Domestic Customers

### 非家庭客戶 Non-Domestic Customers

每月用電 Monthly Consumption 度 Units	累積客戶 Cumulative Customers %	每月加幅 Monthly Increase HK\$
150	20%	8
300	48%	17
500	71%	30

每月用電 Monthly Consumption 度 Units	累積客戶 Cumulative Customers %	每月加幅 Monthly Increase HK\$
200	26%	15
700	50%	51
1,700	70%	125

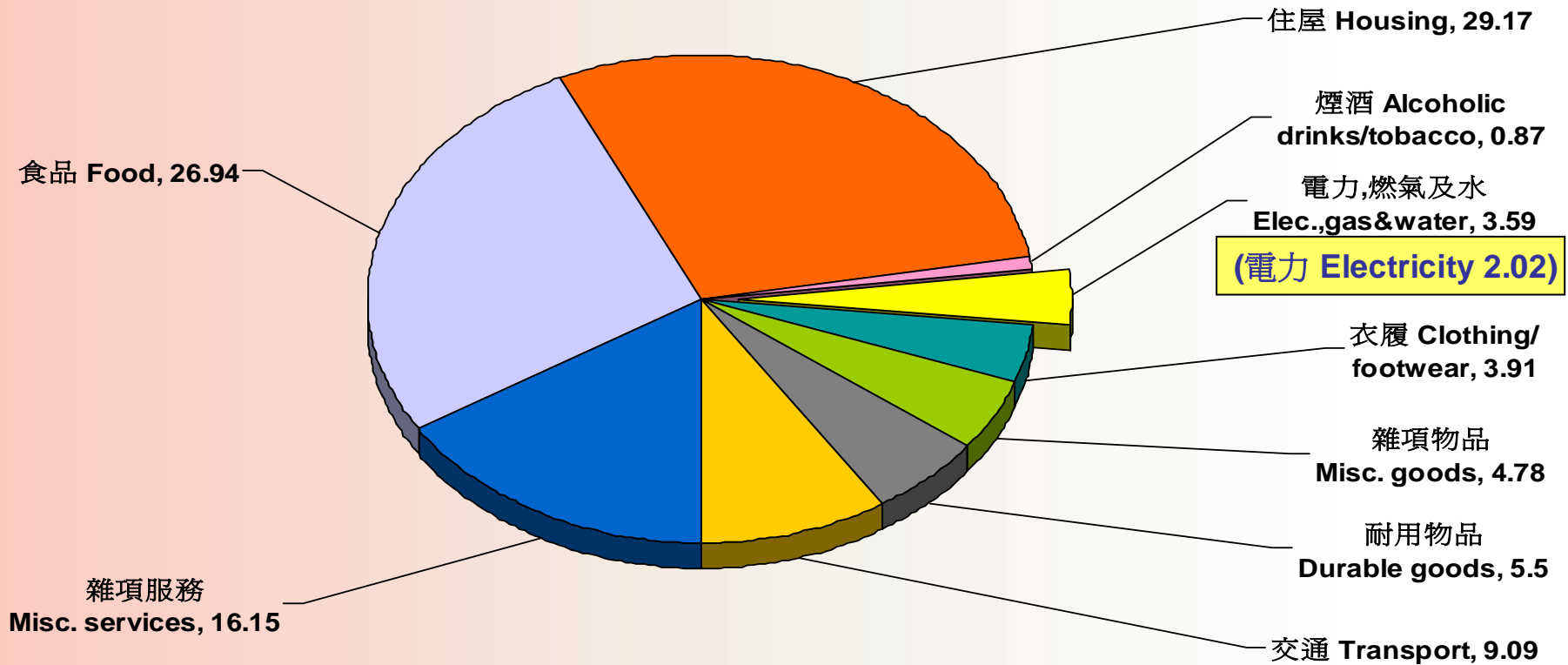


# 電力佔消費物價指數2%

# Electricity is 2% of CPI

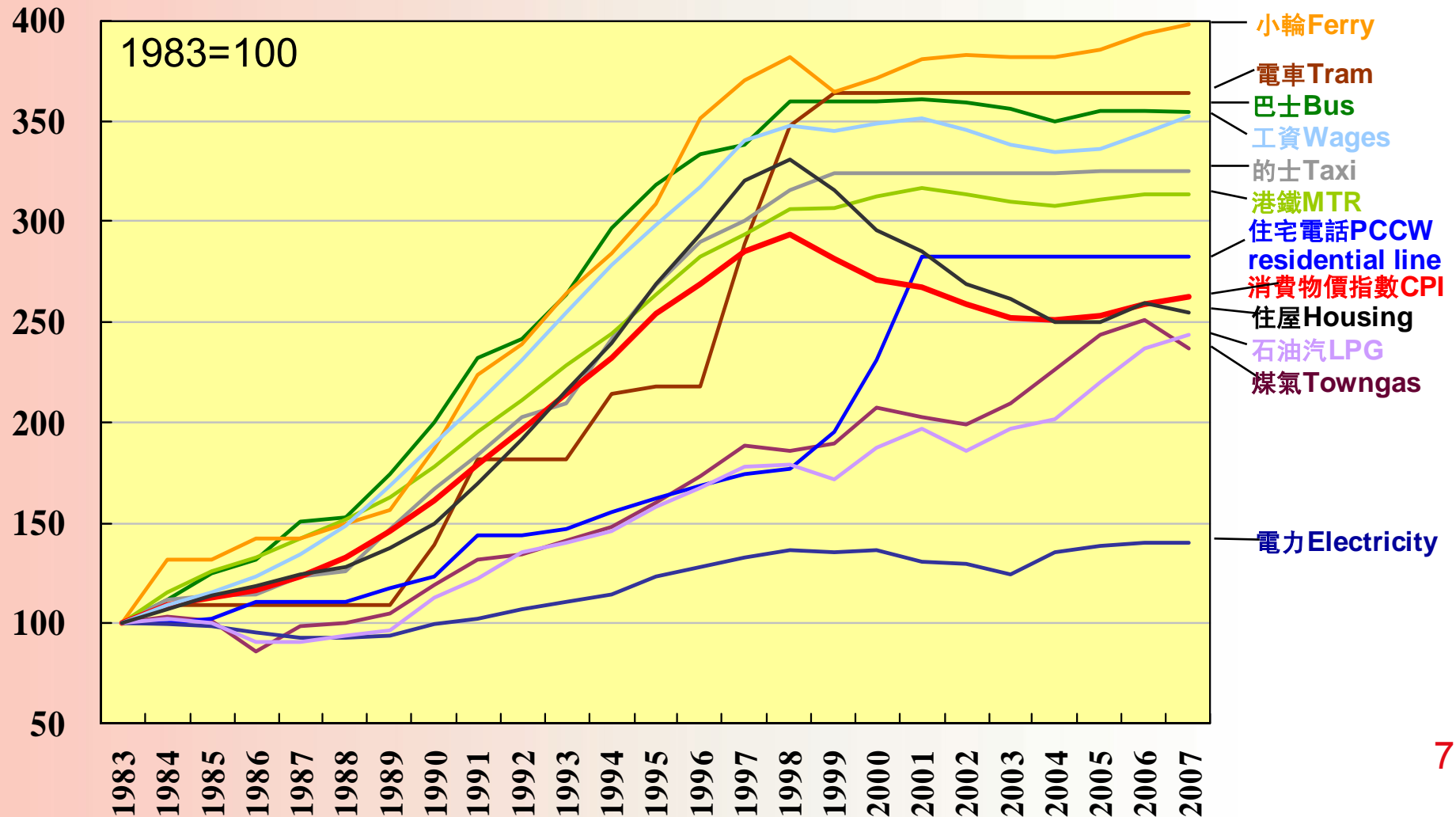
資料來源：香港政府統計處

Source: Census and Statistics Dept., HK





# 電價加幅最低 Lowest increase in electricity prices







## 繼續電費優惠 Continuation of concessionary tariff

<ul style="list-style-type: none"><li>● 向下列有資格領取綜援用戶提供電費優惠</li></ul>	<ul style="list-style-type: none"><li>● Concessionary tariff is available to the following customers who are eligible for public assistance</li></ul>
<ul style="list-style-type: none"><li>● 六十歲或以上長者（獨居或與同資格長者合住）</li><li>● 申請人或其家人現正領取傷殘津貼/援助</li><li>● 單親家庭</li><li>● 失業人士</li></ul>	<ul style="list-style-type: none"><li>● Elderly of 60 or above (single or living with similar elderly)</li><li>● Applicant or family member receiving disability allowance</li><li>● Single-parent family</li><li>● Unemployed</li></ul>
<ul style="list-style-type: none"><li>● 每月首二百度享有四折優惠</li><li>● 豁免按金</li><li>● 不設最低收費</li></ul>	<ul style="list-style-type: none"><li>● 60% discount for first 200 units each month</li><li>● Deposit waived</li><li>● No minimum charge</li></ul>



謝謝  
Thank You