



# 發展計劃 2009-2013 Development Plan

Presentation to LegCo Panel on Economic Development



## 發展計劃要點

- 平均售電量預計按年增長大約 1%
- 五年內資本投資港幣一百二十三億元
- 提供世界級服務及可靠電力供應給予客戶
- 2009 基本電價減少 22.4 仙
- 2009 燃料價條款收費增加 14.9 仙
- 2009 平均淨電價減少 7.5 仙 (減幅5.9%)

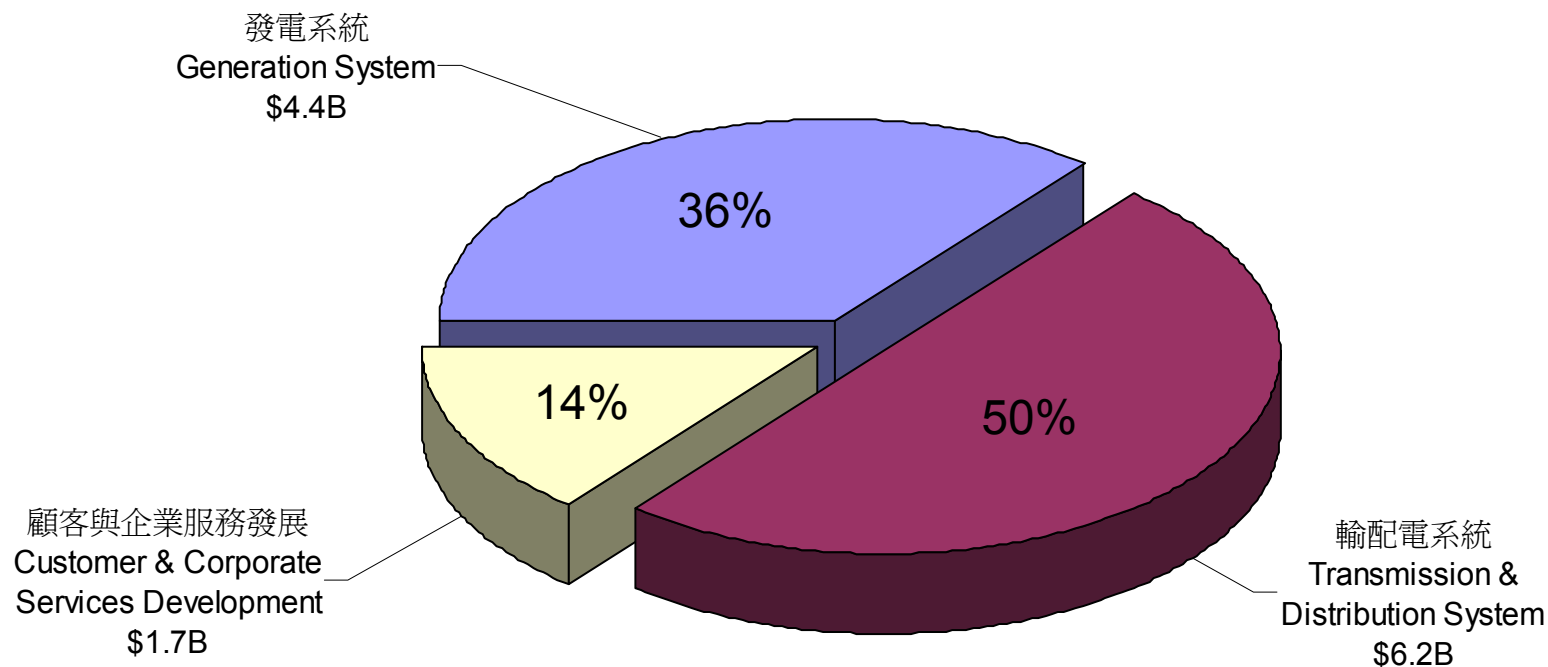
## Development Plan Highlights

- Average sales growth about 1% p.a.
- Capital Expenditure of \$12.3 billion over 5 years
- Provision of world-class services and reliable supply to customers
- Basic tariff reduction of 22.4¢ in 2009
- Fuel clause charge increase of 14.9¢ in 2009
- Average net tariff reduction of 7.5¢ (-5.9%) in 2009



# 五年內投資港幣一百二十三億元

## Invest HK\$12.3 billion in 5 years





## 審慎投資計劃

- 2009 至 2013 年的資本投資為港幣一百二十三億元，扣除通脹和工業資源價格的巨大升幅後，明顯少於 2004 至 2008 年度財政計劃中獲批的港幣一百一十九億元

## Prudent Investment Plan

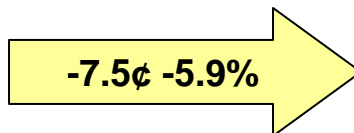
- Capital expenditure for 2009 – 2013 is HK\$12.3B. After adjusted by inflation and huge increases in industrial commodity prices, is significantly less than \$11.9B that was approved in 2004 - 2008 Financial Plan



# 淨電價調整

# Net Tariff Adjustment

組成部份 Components	2008 ¢/kWh
平均基本電價 Average Basic Tariff	116.9¢
燃料價條款收費 Fuel Clause Charge	10.5¢
平均淨電價 Average Net Tariff	127.4¢



組成部份 Components	2009 ¢/kWh
平均基本電價 Average Basic Tariff	94.5¢
燃料價條款收費 Fuel Clause Charge	25.4¢
平均淨電價 Average Net Tariff	119.9¢

組成部份 Components	變化 Changes	對淨電價影響 Effect on Net Tariff
平均基本電價 Average Basic Tariff	-22.4¢	-17.6%
燃料價條款收費 Fuel Clause Charge	+14.9¢	+11.7%
平均淨電價 Average Net Tariff	-7.5¢	-5.9%



## 煤價上升 3 倍

## Coal price increased by 3 times

每噸美元  
US\$/MT

200

150

100

50

0

燃煤離岸價由 2007 年初至 2008 年中  
急升近 3 倍。

**FOB coal price has increased by  
almost 3 times from early 2007 to  
mid 2008.**

資料來源: 巴魯楊克指數

Source: Barlow Jonker Index

2003

2004

2005

2006

2007

2008



## 港燈受燃煤價格波動影響較大

# HK Electric is more vulnerable to coal price hike

- 港燈燃煤發電佔 83%
- 中電燃煤發電佔 33%
- 燃煤價格對港燈的影響為中電的 2.5 倍
- 中電燃料價條款收費增加 5.9 仙
- 港燈燃料價條款收費相對增加 14.9 仙
- HEC has 83% coal generation
- CLP has 33% coal generation
- Impact of coal price on HEC is 2.5 times of CLP
- CLP's increase in fuel clause charge is 5.9¢
- HEC's increase in fuel clause charge at 14.9¢ is comparable



各類客戶每度電同樣減 7.5 仙  
Same reduction of 7.5¢ per unit for all customers

家庭客戶  
Domestic Customers

每月用電 Monthly Consumption 度 Units	累積客戶 Cumulative Customers %	每月減幅 Monthly Decrease HK\$
150	20%	-11.25
300	48%	-22.50
500	71%	-37.50

平均 Average -6.4%

非家庭客戶  
Non-Domestic Customers

每月用電 Monthly Consumption 度 Units	累積客戶 Cumulative Customers %	每月減幅 Monthly Decrease HK\$
200	26%	-15.00
700	51%	-52.50
1,700	70%	-127.50

平均 Average -5.8%





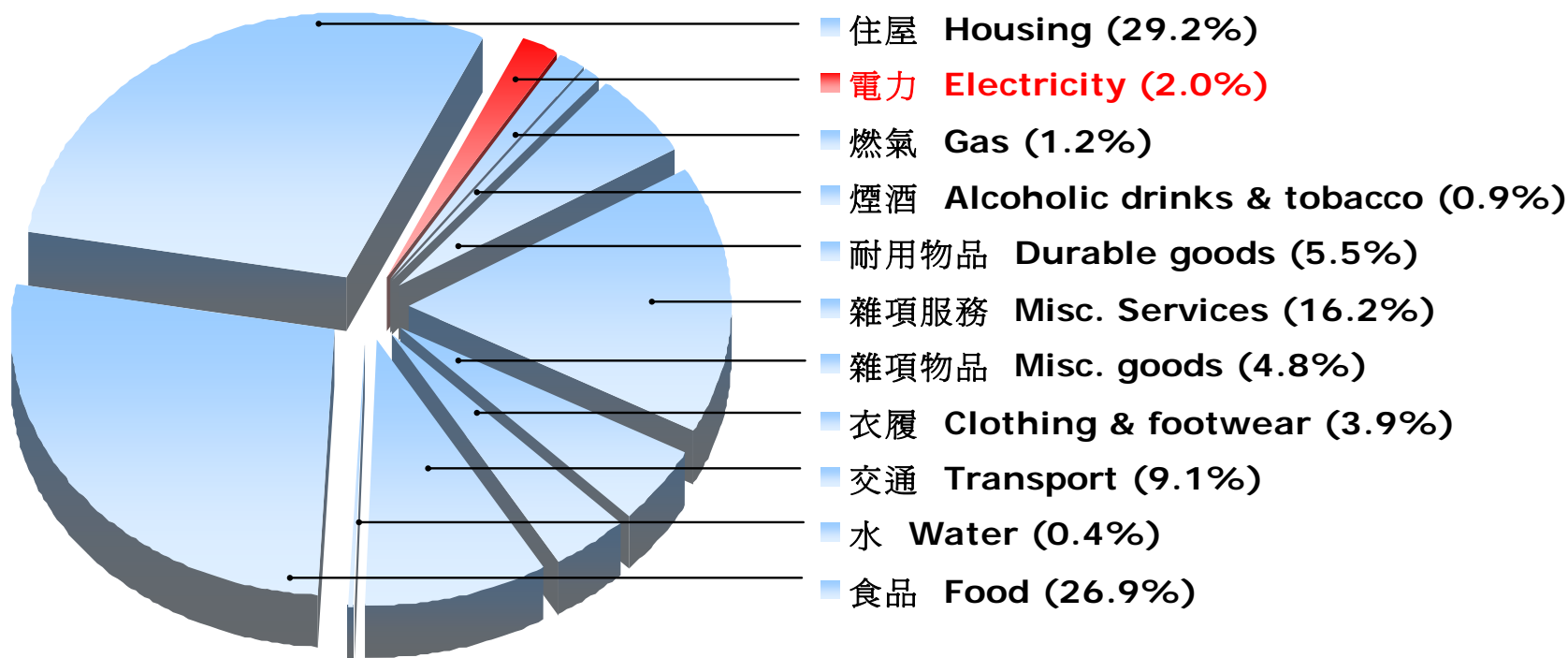
## 繼續電費優惠

# Concessionary tariff continues to benefit those in need

<ul style="list-style-type: none"><li>● 向下列有資格領取綜援用戶提供電費優惠</li></ul>	<ul style="list-style-type: none"><li>● Concessionary tariff is available to the following customers who are eligible for public assistance</li></ul>
<ul style="list-style-type: none"><li>● 六十歲或以上長者（獨居或與同資格長者合住）</li><li>● 申請人或其家人現正領取傷殘津貼/援助</li><li>● 單親家庭</li><li>● 失業人士</li></ul>	<ul style="list-style-type: none"><li>● Elderly of 60 or above (single or living with similar elderly)</li><li>● Applicant or family member receiving disability allowance</li><li>● Single-parent family</li><li>● Unemployed</li></ul>
<ul style="list-style-type: none"><li>● 每月首二百度享有四折優惠</li><li>● 豁免按金</li><li>● 不設最低收費</li></ul>	<ul style="list-style-type: none"><li>● 60% discount for first 200 units each month</li><li>● Deposit waived</li><li>● No minimum charge</li></ul>



# 電力佔家庭消費 2% Electricity only accounts for 2% of household expenditure



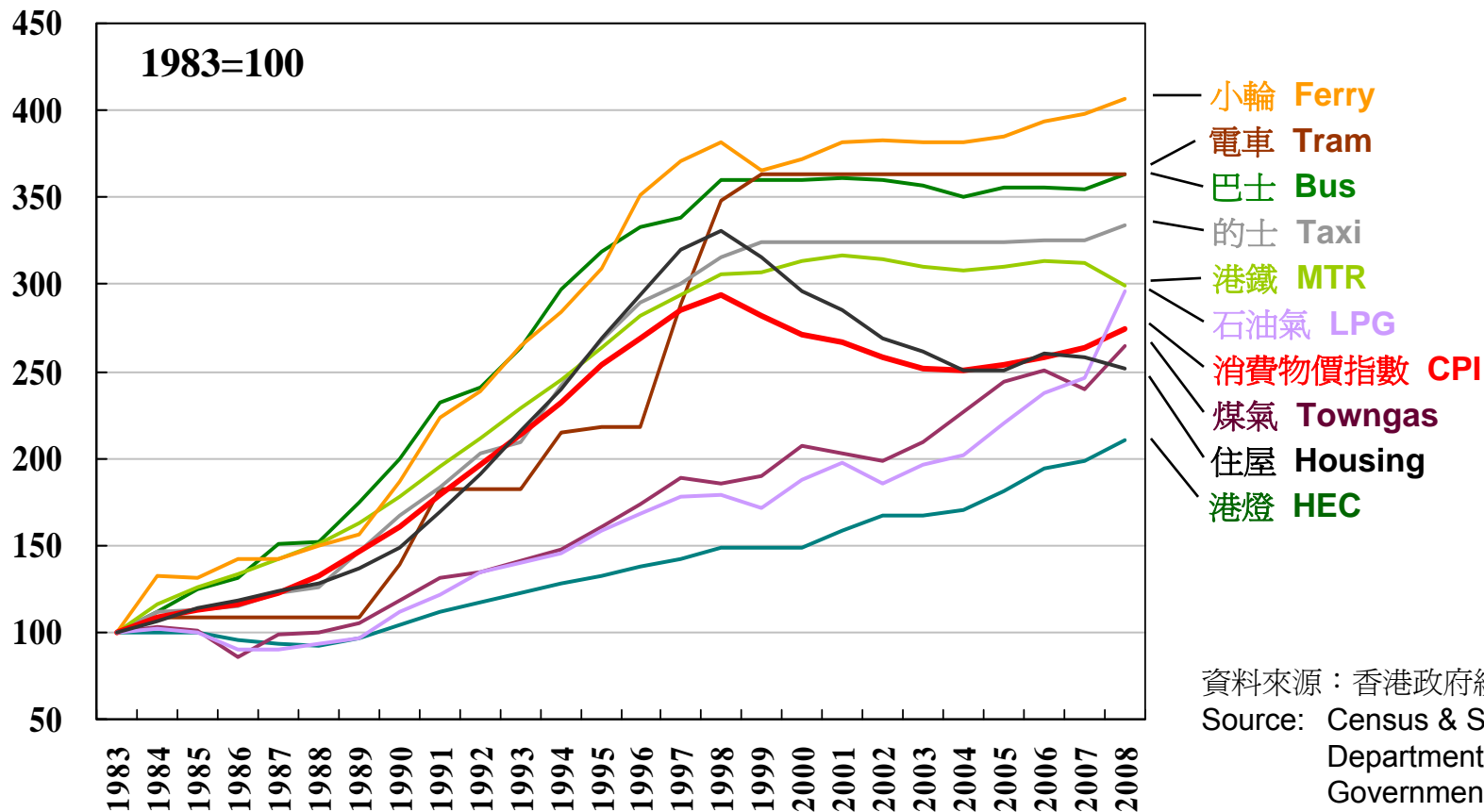
資料來源：香港政府統計處

Source: Census & Statistics Department, HKSAR Government



# 電價調整多年來低於其它服務收費

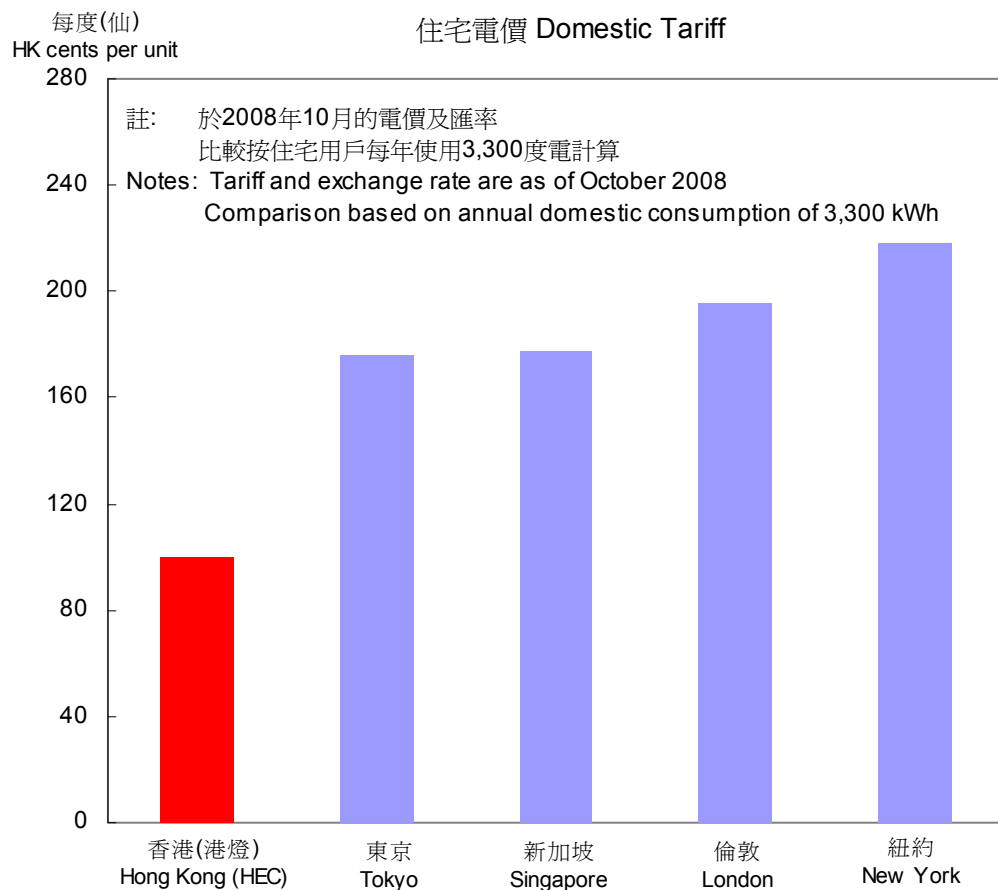
## Tariff adjustment over time is well below that of other services





# 電力在香港符合用戶負擔能力及可靠程度高

## Electricity in HK is both affordable and reliable



### 平均意外停電時間 (2004-2006)

(每年每戶停電分鐘)

### Average unplanned power interruptions (2004-2006)

(Minutes per customer per year)

港燈 HEC	1
東京 Tokyo	4
新加坡 Singapore	2
倫敦 London	34
紐約 New York	31



## 優質服務

- 香港需要世界級服務
- 港燈一直達到十八個優質服務標準

部分主要服務種類	2008年優質服務標準	2007年成績
電力供應 ● 電力供應可靠程度	超過99.998%	超過99.999%
電力接駁 ● 驗線合格後安裝電表	即時	達到標準
客戶查詢 ● 由客戶服務代表接聽電話查詢平均等候時間	少於9 秒	8.6秒

## Quality Services

- Hong Kong deserves world class services
- HK Electric has consistently achieved 18 Customer Services Standards

Some Major Services Provided	Service Standards in 2008	Actual Results in 2007
Electricity Supply ● Reliability Rating of Electricity Supply	Better than 99.998%	Better than 99.999%
Connection of Supply ● Meter Installation after Satisfactory Inspection	Immediate	Achieved
Customer Enquiries ● Average Waiting Time for Telephone Enquiry Services by Customer Services Representatives	Less than 9 seconds	8.6 seconds



謝謝  
THANK YOU