

立法會交通事務委員會會議

Legislative Council Panel on Transport Meeting

27 February 2009

中九龍幹線 - 最新進展情況

Central Kowloon Route - Progress update



首選走線
Preferred Alignment

- 鑽挖式隧道 Bored Tunnel
- 明挖回填式隧道 Cut & Cover Tunnel
- 海底隧道 Underwater Tunnel
- 高架/地面道路 Elevated / At-Grade Road
- 低於地面道路 Depressed Road
- 通風大樓 Ventilation Building
- 行政大樓 Administration Building

公眾期望藉着中九龍幹線工程為機遇，將油麻地發展為可持續發展的社區。

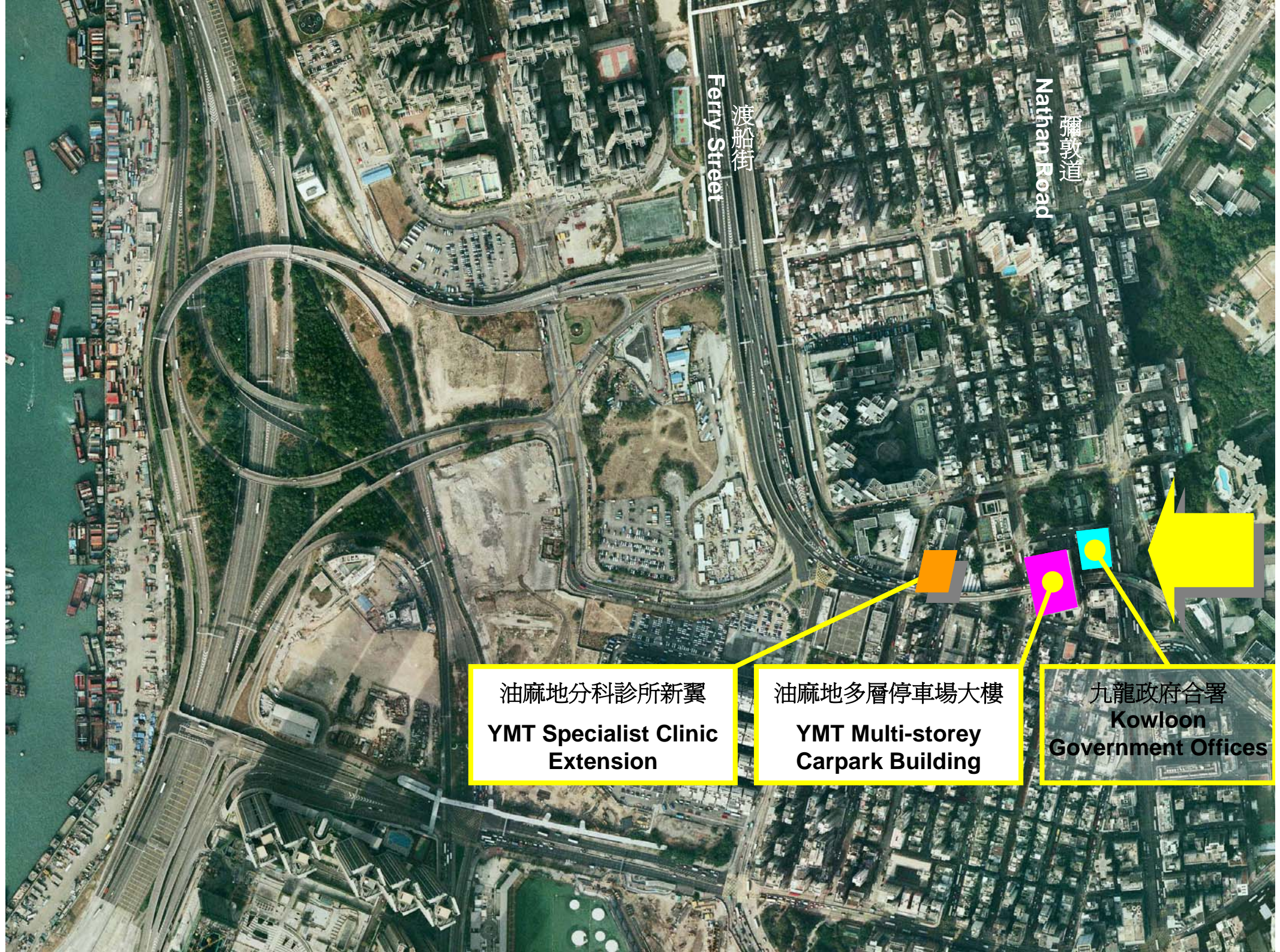
The public views CKR as an opportunity to achieve a sustainable Yau Ma Tei.



- 油麻地城市設計概念研究
Urban Design Conceptual Study for Yau Ma Tei area
- 油麻地警署的保育研究
Conservation Study of the Yau Ma Tei Police Station



油麻地城市設計概念研究
Urban Design Conceptual Study for Yau Ma Tei area



Ferry Street
渡船街

Nathan Road
彌敦道

油麻地分科診所新翼
**YMT Specialist Clinic
Extension**

油麻地多層停車場大樓
**YMT Multi-storey
Carpark Building**

九龍政府合署
**Kowloon
Government Offices**

社區設施
Community &
Vibrancy

文化空間
Local Culture
Continuity

油麻地警署
Yau Ma Tei
Police Station

油麻地賽馬會分科
診療所
Yau Ma Tei jockey
Club Polyclinic

建議中新玉器市場
Proposed New Jade
Hawker Bazaar

梁顯理油麻地社區
服務中心
Henry Leong Yau
Ma Tei
Community
Centre

建議中小型政府辦公設施
(圖書館及郵政局)
Proposed Mini-government
Offices (Library and Post
Office)

天后廟
Tin Hau Temple

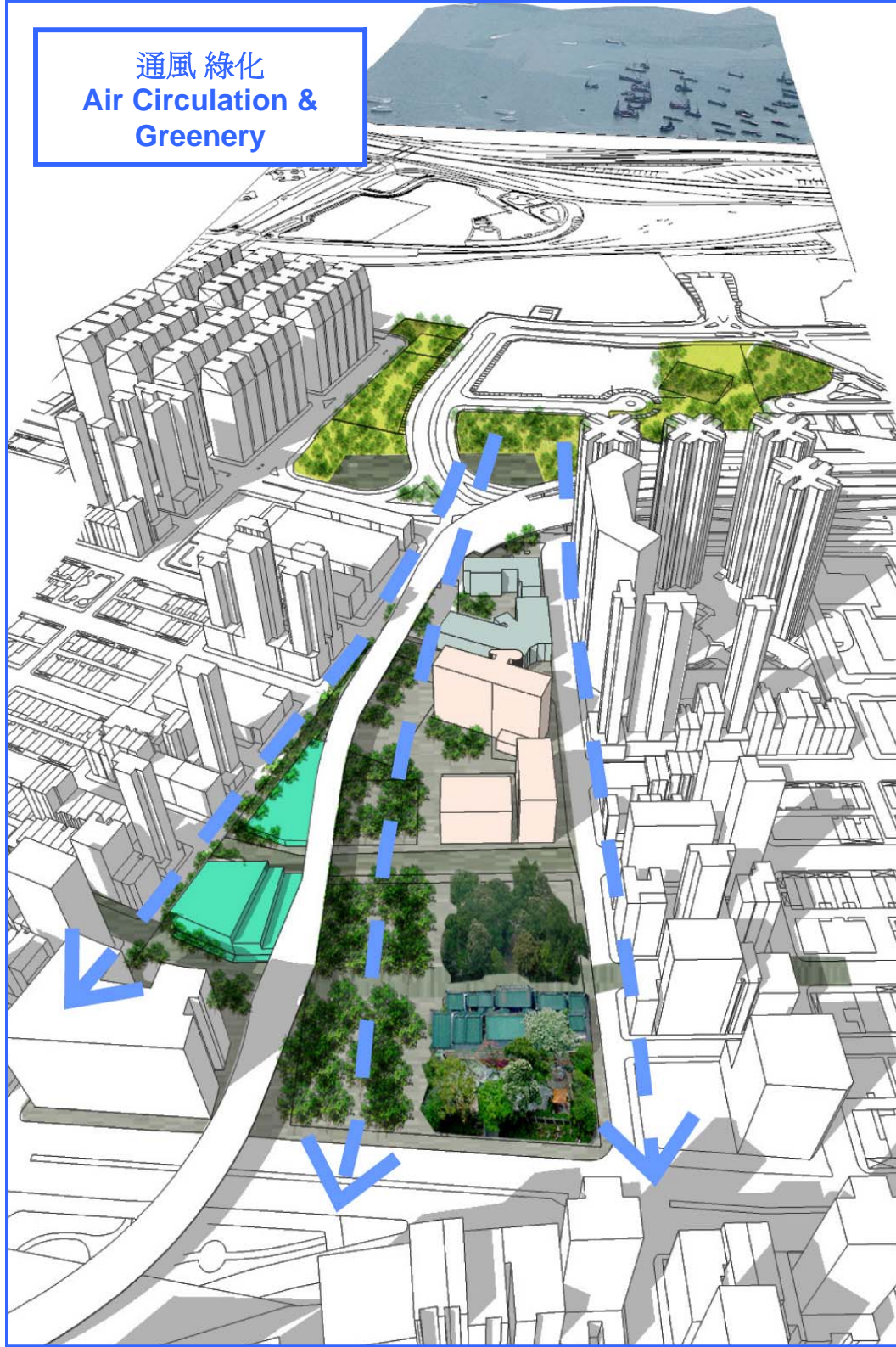
榕樹頭廣場
Yung Shau Tau
Square

Reclamat

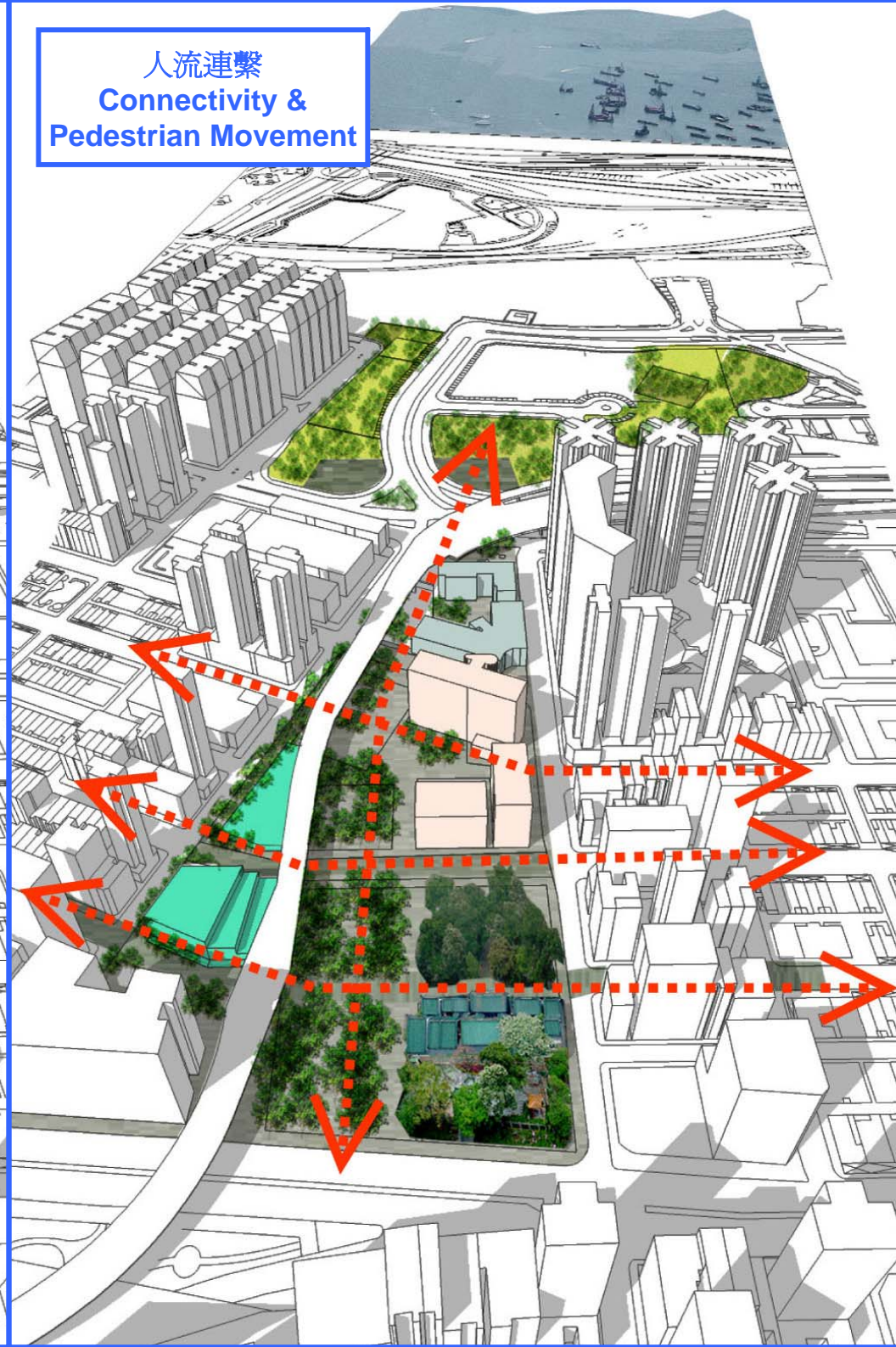
Shang

Tem

通風 綠化
Air Circulation &
Greenery



人流連繫
Connectivity &
Pedestrian Movement





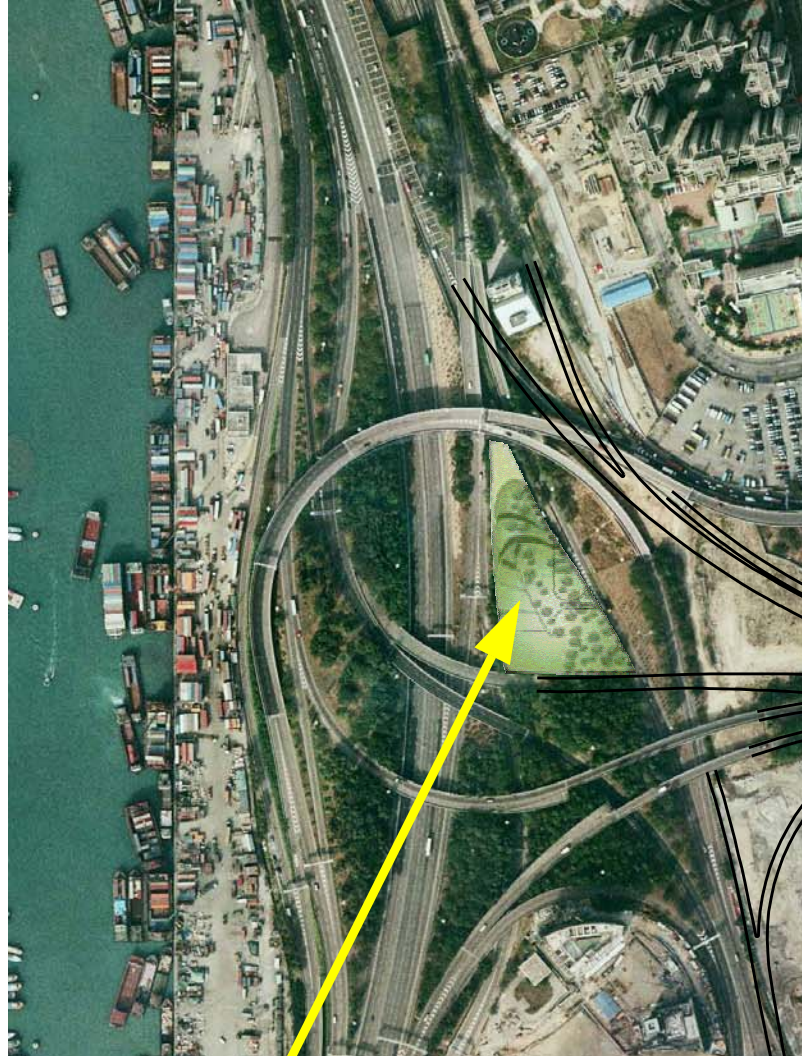
彌敦道
Nathan Road

An architectural rendering of a modern pedestrian walkway. On the left, a building features a large, translucent green canopy and a glass wall. The ground is paved with a pattern of light and dark green rectangular tiles. Several stylized human figures and a dog are shown walking. In the background, a tall tree stands next to a modern glass structure, with a city skyline visible in the distance. A white text box with the name 'Temple Street' is centered in the image.

廟街
Temple Street



甘肅街
Kansu Street



園境平台 Landscape Deck



通風大樓 Ventilation Building





油麻地警署的保育研究

Conservation Study of Yau Ma Tei Police Station

警署歷史

History of the Station to Yau Ma Tei Police Station



1947 – 油麻地鳥瞰圖 Aerial view of Yau Ma Tei

建築群的演變 Evolution of the compound



1873 - 1922



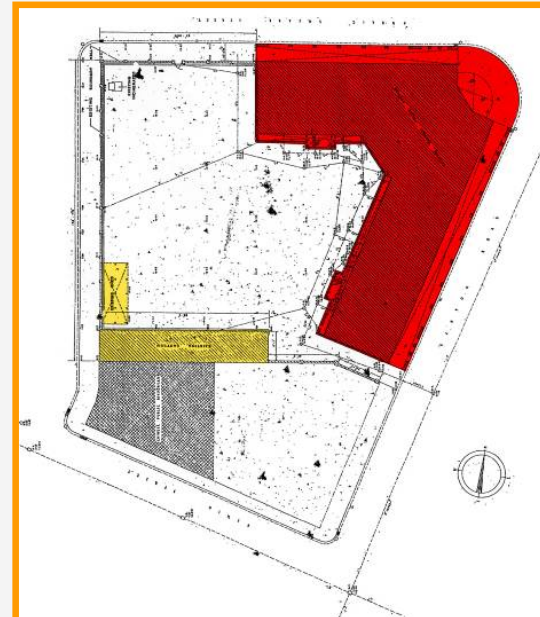
1922



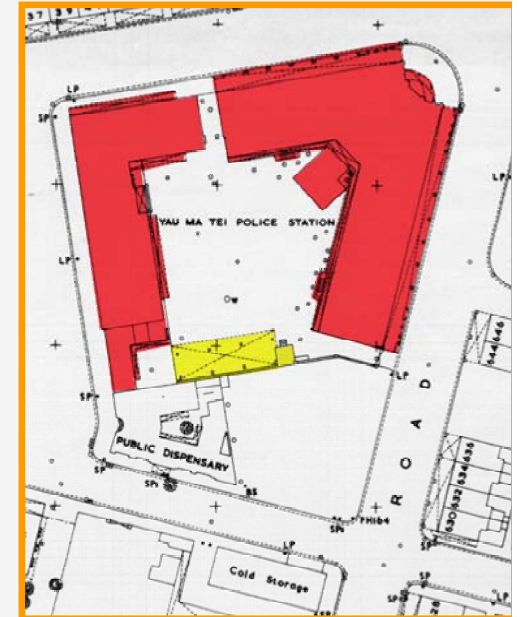
1922



1940s



1950s



1960s

- 狀況勘察 **Condition Survey**



- 確認具歷史特色或後期修改的建築部份
Identifies historical architectural features and more recent modifications

被封閉的遊廊
Verandahs enclosed



- 探索建築群在不同方面的價值：
Examines the station compound in terms of:

環境意義

contextual significance

歷史意義

historic significance

建築意義

architectural significance

社會意義

social significance



- 為建築羣內各組成部份，確認了文化特徵，並定下保育指引

Identifies the Character Defining Elements and conservation guidelines of individual components of the compound.



屋頂和烟囱
Roof and chimney stacks



拱形入口
Arch doorways



壁爐
Fireplaces

- 各建築物的價值
Significance of individual buildings



舊翼 – 高等價值

Old Wing
– High Significance



新翼 – 中等價值

New Wing
– Medium Significance



附連建築物 – 價值較低

Ancillary Buildings
– Low Significance

- 個別建築物的保育指引
Conservation guideline for individual buildings

建議 Recommendations

該研究建議採納 保育方案 以:

A conservation approach is proposed:

- 適當地保育、維修、管理、及修復
to conserve, repair, manage, & rehabilitate carefully as necessary
- 保留有價值的建築部份，並將其恢復原貌；
to preserve and restore significant features;



重開被封閉的遊廊，
重造欄杆以恢復原貌
**Re-open enclosed
verandahs and reproduce
balustrades to restore the
original appearance**

- 在有需要時引進改造工程，並移除有礙建築物價值的修改部份
to introduce modifications where necessary and to remove intrusive alterations.

考慮拆去加建的鎗房
**Consider removal of
armoury extension**



引進改造工程以方便公眾
使用，如電梯或空調等
**Introduce modifications
to facilitate public use
such as lifts and air-
conditioning**

焦點小組會議 Focus Group Meeting



油麻地城市設計及油麻地警署保育研究
Yau Ma Tei Urban Design and Conservation Study of Yau Ma Tei Police Station

公眾論壇 Public Forum



油麻地城市設計及油麻地警署保育研究
Yau Ma Tei Urban Design and Conservation Study of Yau Ma Tei Police Station

- 普遍支持城市設計概念的建議並提出多項構思
generally supportive of the proposed urban design concept and raised various ideas
- 贊成保留油麻地警署舊翼，但對是否保留新翼則有不同的意見
Support to preserving the old wing, and different opinions the preservation of the new wing
- 對警署建築物將來用途有不同的建議，所有建議都包括可讓公眾使用
Have different options on future uses of the police station buildings, all suggestions involved allowing public access into the buildings

中九龍幹線九龍灣段工程

**The construction of the
Central Kowloon Route section
at Kowloon Bay**



九龍灣
Kowloon Bay

已考慮的興建隧道方法

Tunneling Methods Considered



鑽挖式隧道
Bored Tunnel



沉管式隧道
Immersed Tube Tunnel



圍堰 - 明挖回填式隧道
Cut-and-Cover – Cofferdam



垂直隔牆 - 明挖回填式隧道
Cut-and-Cover - Diaphragm Wall

施工方法的主要考慮因素

Main Considerations of the construction method

1. 盡量減少臨時填海範圍
Minimize the extent of temporary reclamation
2. 工程對環境影響的考慮
Consideration of environmental impact of works
3. 施工方法的安全和可行性
Safe and feasible construction methodology
4. 盡量減少對公眾的影響
Minimizing disturbance to local population

垂直隔牆 - 明挖回填式隧道 Cut-and-Cover - Diaphragm Wall

動工前 Before Commencement



垂直隔牆 - 明挖回填式隧道 Cut-and-Cover - Diaphragm Wall

第一階段 Stage 1



1.6 hectares of
Temporary Reclamation
for 20 months

1.6公頃臨時填海，
進行20個月

Marine traffic access
to be maintained

維持水上交通

垂直隔牆 - 明挖回填式隧道

Cut-and-Cover - Diaphragm Wall

第二階段 Stage 2



垂直隔牆 - 明挖回填式隧道 Cut-and-Cover - Diaphragm Wall

完工 Completed



Reinstate to existing condition
回復原貌

設施重置及優化機遇

Reprovisioning of Facilities and Enhancement Opportunities

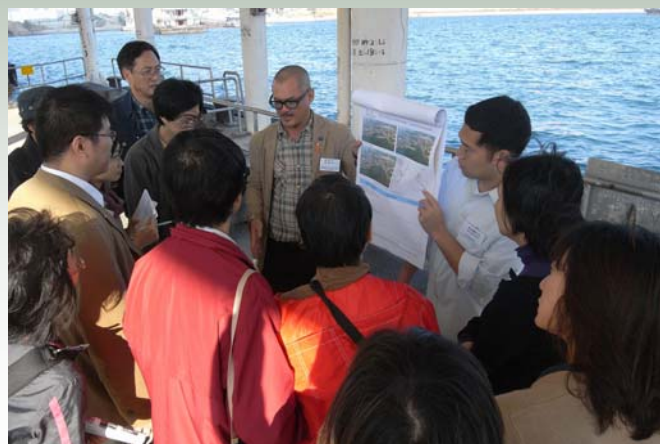


焦點小組會議 Focus Group Meeting



馬頭角及九龍灣擬建工程
Proposed works at Ma Tau Kok and Kowloon Bay

公眾論壇 Public Forum



九龍灣段的工程、設施重置及優化機遇

The construction at Kowloon Bay, reprovisioning of facilities and enhancement opportunities

- 公眾理解到建議的建築方法已考慮到工地的限制並知道填海是臨時性的
Appreciate the construction proposal considering the site constraints and note the reclamation is temporary
- 把握工程的機遇，將設施重置及優化如增加園景及海濱休憩地方
Take the opportunity of the project, reprovisioning and enhancement of the facilities such as increase landscaping and harbour front amenity areas.

- 路政署將根據保港條例，說明臨時填海有凌駕性的公眾需要
HyD will, in accordance with the Protection of Harbour Ordinance, demonstrate the overriding public need for temporary reclamation
- 路政署將諮詢社會人士、立法會交通事務委員會、相關的區議會及共建維港委員會
HyD will consult the community, LegCo Transport Panel, the concerned District Councils and the Harbort-front Enhancement Committee

未來路向

Way Forward

- 於**2009**年年中完成環境影響評估，並向區議會匯報
Complete Environmental Impact Assessment by Aug 2009 and report to the District Councils
- **2009**年年底刊憲，預計**2012**年動工並於**2016**年完成
Gazette by end 2009, target to commence works in 2012 for completion in 2016

多謝

Thank You