

**The Land Registry Monthly Press Release
Figures on Agreements for Sale and Purchase
and Statistical Tables on Instruments
Received for Registration in October 2008**

CB(1)177/08-09(01)

The total number of sale and purchase agreements for all types of building units received for registration in the Land Registry in October 2008 was 6,054. This was a decrease of 17.8% from September 2008 and 54.2% compared with October 2007. Using a 12-month moving average, the figure for October 2008 represented a decrease of 5% from September 2008 but an increase of 6.7% compared with October 2007. The total consideration of these agreements in the month was \$18.9 billion, down 19.6% from September 2008 and 62.6% compared with the amount for October 2007.

Among the 6,054 sale and purchase agreements, 4,719 were sale and purchase agreements for residential units. This was a decrease of 22.3% from September 2008 and 58.1% compared with October 2007. The total consideration of these agreements in the month was \$16.3 billion, down 13.1% from September 2008 and 62.9% compared with the amount for October 2007. Sales of residential units refer to the sale and purchase agreements with payment of stamp duty. These statistics do not include sales of units under the Home Ownership Scheme, the Private Sector Participation Scheme and the Tenants Purchase Scheme except those after payment of premium.

The figures are contained in the monthly statistics released today by the Land Registry on deeds relating to property transactions received for registration in the Land Registry in October 2008.

Relevant statistics for September 2008 and October 2007 are provided for comparison. Figures on sale and purchase agreements received for the past 12 months, the year-on-year rate of change and breakdown figures on residential sales are also released.

As deeds may not be lodged with the Land Registry until up to 30 days after the transaction, these statistics generally relate to land transactions in the previous month.

THE LAND REGISTRY
Consolidated Monthly Statistics in respect of deeds received
for registration in the Land Registry

Table 1

Month : October 2008

Item	Nature of Deeds	Number of Deeds received for registration			Consideration (nearest \$ million)		
		Urban	New Territories	Total	Urban	New Territories	Total
1.	Agreements for Sale and Purchase of Building Units	2,447 (2,685)	3,607 (3,821)	6,054 (6,506)	11,239	7,698	18,937
2.	Agreements for Sale and Purchase of Land	11	120	131	607	309	916
	Sub-total (1) + (2)	2,458	3,727	6,185	11,846	8,007	19,853
3.	Assignments of Building Units	4,676 (5,412)	4,869 (5,169)	9,545 (10,581)	20,568	9,322	29,890
4.	Assignments of Land	21	513	534	3,176	798	3,974
	Sub-total (3) + (4)	4,697	5,382	10,079	23,744	10,120	33,864
5.	Building Mortgages/Building Legal Charges	2	9	11			
6.	Other Mortgages/Legal Charges	4,338	4,484	8,822			
	Sub-total (5) + (6)	4,340	4,493	8,833			
7.	Receipts/Discharges/Releases	5,049	5,901	10,950			
8.	Leases/Tenancy Agreements	261	141	402			
9.	Exclusion Orders	0	0	0			
10.	Others	6,086	4,202	10,288			
	Total	22,891	23,846	46,737			

Note : Figures in brackets denote the number of units involved.

THE LAND REGISTRY
Comparison of Monthly Statistics

Table 2

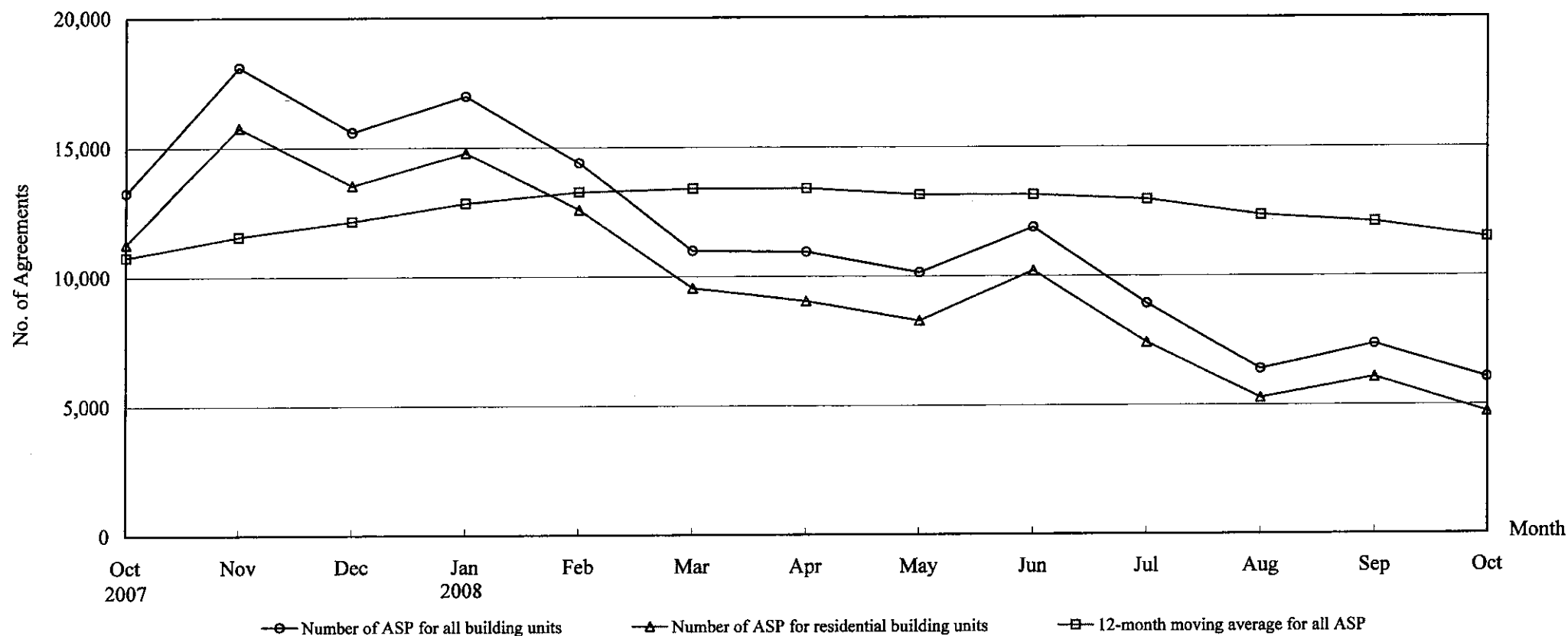
Month : October 2008

Item	2008 October	2008 September	2007 October	October 2008 Increase (+) or Decrease (-) as compared with			
				September 2008		October 2007	
				No. or Consideration	Percentage	No. or Consideration	Percentage
1. Agreements for Sale and Purchase of Building Units							
(a) No.	6,054	7,369	13,227	- 1,315	- 17.8	- 7,173	- 54.2
(b) Consideration	18,937	23,559	50,678	- 4,622	- 19.6	- 31,741	- 62.6
2. Agreements for Sale and Purchase of Land							
(a) No.	131	147	200	- 16	- 10.9	- 69	- 34.5
(b) Consideration	916	1,390	2,157	- 474	- 34.1	- 1,241	- 57.5
Sub-total of (1) + (2)							
(a) No.	6,185	7,516	13,427	- 1,331	- 17.7	- 7,242	- 53.9
(b) Consideration	19,853	24,949	52,835	- 5,096	- 20.4	- 32,982	- 62.4
3. Assignments of Building Units							
(a) No.	9,545	10,700	13,818	- 1,155	- 10.8	- 4,273	- 30.9
(b) Consideration	29,890	34,212	43,687	- 4,322	- 12.6	- 13,797	- 31.6
4. Assignments of Land							
(a) No.	534	494	511	+ 40	+ 8.1	+ 23	+ 4.5
(b) Consideration	3,974	1,788	3,106	+ 2,186	+ 122.3	+ 868	+ 27.9
Sub-total of (3) + (4)							
(a) No.	10,079	11,194	14,329	- 1,115	- 10.0	- 4,250	- 29.7
(b) Consideration	33,864	36,000	46,793	- 2,136	- 5.9	- 12,929	- 27.6
5. No. of Building Mortgages/Building Legal Charges	11	8	12	+ 3	+ 37.5	- 1	- 8.3
6. No. of Other Mortgages/Legal Charges	8,822	9,891	12,048	- 1,069	- 10.8	- 3,226	- 26.8
Sub-total of (5) + (6)	8,833	9,899	12,060	- 1,066	- 10.8	- 3,227	- 26.8
7. No. of Receipts/Discharges/Releases	10,950	12,331	12,799	- 1,381	- 11.2	- 1,849	- 14.4

Note : Consideration rounded to the nearest million Hong Kong dollars.

The Land Registry
Chart showing the number of Sale and Purchase Agreements of
building units from October 2007 to October 2008

Table 3



Number of Sale and Purchase Agreements of building units

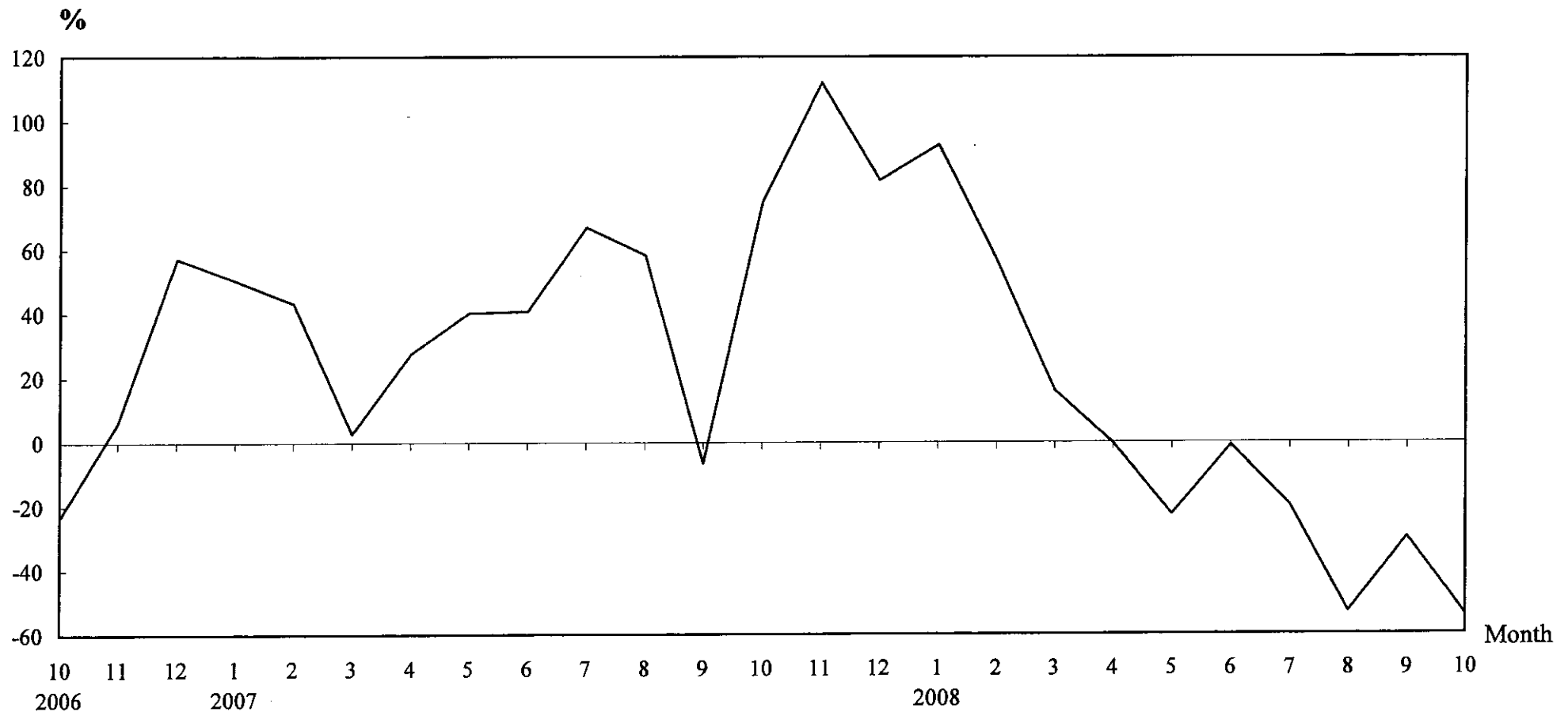
Year	2007			2008									
	Oct	Nov	Dec	Jan	Feb	Mar	Apr	May	Jun	Jul	Aug	Sep	Oct
Number of ASP for all building units	13,227	18,105	15,592	16,984	14,384	10,993	10,945	10,138	11,876	8,930	6,402	7,369	6,054
Number of ASP for residential building units	11,271	15,759	13,503	14,786	12,581	9,550	9,047	8,281	10,205	7,433	5,284	6,075	4,719
12-month moving average for all ASP	10,759	11,557	12,141	12,822	13,255	13,382	13,380	13,134	13,125	12,943	12,338	12,079	11,481

Note : Sales of residential units refer to sale and purchase agreements with payment of stamp duty. These statistics do not include sales of units under the Home Ownership Scheme, the Private Sector Participation Scheme and the Tenants Purchase Scheme except those after payment of premium.

The Land Registry

Table 4

Year-on-year Rate of Change in the Number of Sale and Purchase Agreements



Number of Sale and Purchase Agreements of residential and non-residential building units

Year/Month	Jan	Feb	Mar	Apr	May	Jun	Jul	Aug	Sep	Oct	Nov	Dec
2006	5,855	6,413	9,208	8,598	9,332	8,508	6,661	8,634	11,206	7,554	8,539	8,579
2007	8,807	9,188	9,470	10,973	13,090	11,979	11,121	13,664	10,475	13,227	18,105	15,592
2008	16,984	14,384	10,993	10,945	10,138	11,876	8,930	6,402	7,369	6,054		

Table 5

THE LAND REGISTRY

**Number of Sale and Purchase Agreements of residential building units and total consideration
from October 2007 to October 2008**

Year / Month		Range of Consideration (\$ million)												Total	
		Less than 1		1 to less than 2		2 to less than 3		3 to less than 5		5 to less than 10		10 or over			
		No.	%	No.	%	No.	%	No.	%	No.	%	No.	%	No.	Consideration (\$ million)
2007	10	1,649	15	3,988	35	2,094	19	1,725	15	1,135	10	680	6	11,271	43,830
	11	1,691	11	5,065	32	2,789	18	2,751	17	2,161	14	1,302	8	15,759	70,116
	12	1,554	12	4,716	35	2,530	19	2,348	17	1,530	11	825	6	13,503	52,511
2008	1	1,533	10	5,226	35	2,600	18	2,955	20	1,738	12	734	5	14,786	56,527
	2	1,292	10	4,817	38	2,411	19	2,336	19	1,155	9	570	5	12,581	43,765
	3	861	9	2,981	31	1,431	15	2,475	26	1,446	15	356	4	9,550	37,442
	4	1,202	13	3,731	41	1,576	17	1,442	16	757	8	339	4	9,047	27,564
	5	1,026	12	3,362	41	1,601	19	1,322	16	631	8	339	4	8,281	26,304
	6	1,096	11	3,532	35	1,640	16	1,627	16	1,207	12	1,103	11	10,205	50,431
	7	893	12	3,085	42	1,363	18	1,128	15	642	9	322	4	7,433	25,139
	8	644	12	2,387	45	1,013	19	736	14	352	7	152	3	5,284	14,974
	9	701	12	2,379	39	1,350	22	1,043	17	434	7	168	3	6,075	18,733
	10	612	13	1,937	41	933	20	617	13	471	10	149	3	4,719	16,279

Note : Figures in percentage for individual items may not add up to 100% due to rounding.

THE LAND REGISTRY

Monthly Statistics in respect of Sale & Purchase Agreements
of building units received for registration on regional basis

Month: October 2008

Item	District	Sale and Purchase Agreements of Building Units	
		No. of Transactions	Consideration (nearest \$million)
1.	Hong Kong	942	7,038
2.	Kowloon	1,505	4,201
3.	Islands	204	655
4.	North	215	304
5.	Sai Kung	849	1,152
6.	Shatin	451	1,012
7.	Tai Po	238	425
8.	Tsuen Wan	728	2,047
9.	Tuen Mun	410	531
10.	Yuen Long	512	1,572
	Total	6,054	18,937