

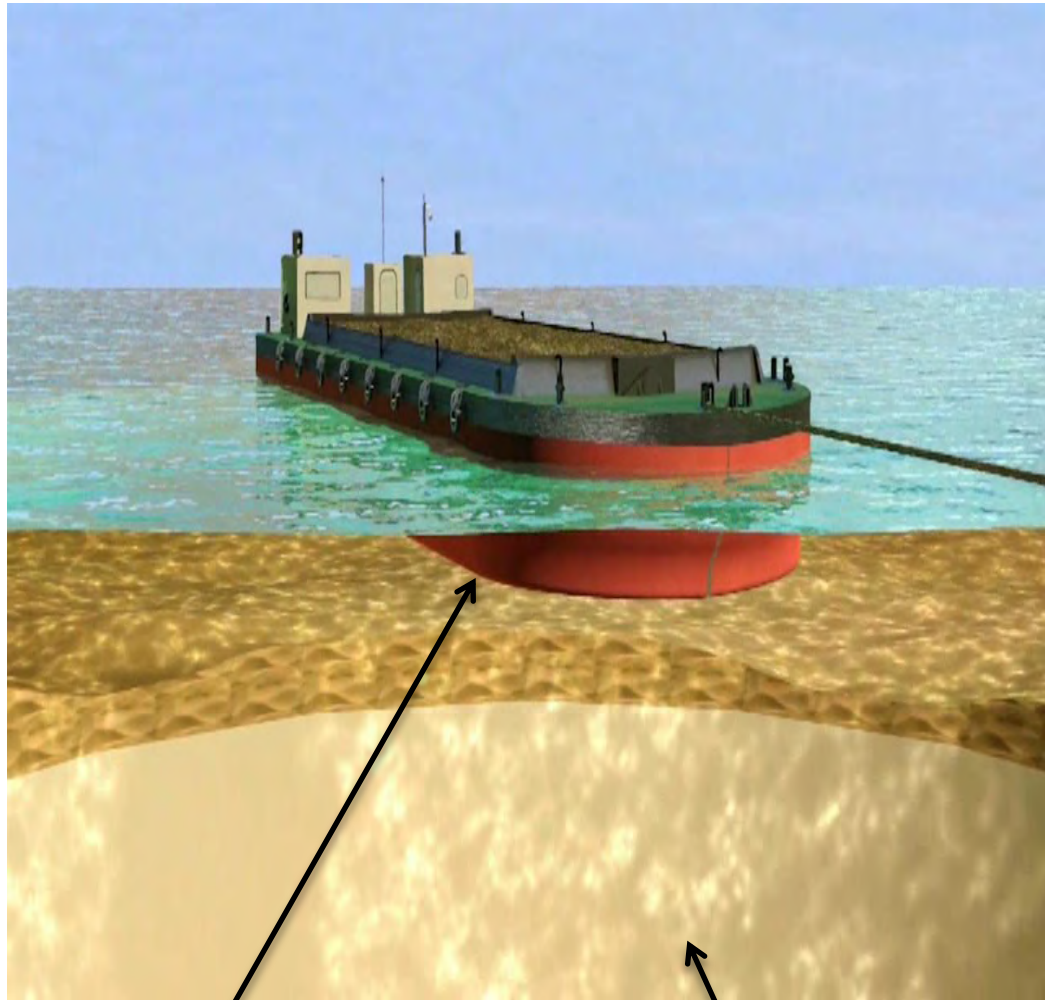
大小磨刀以南污染泥卸置設施的挖掘、管理及覆蓋工程



卸置管理工作

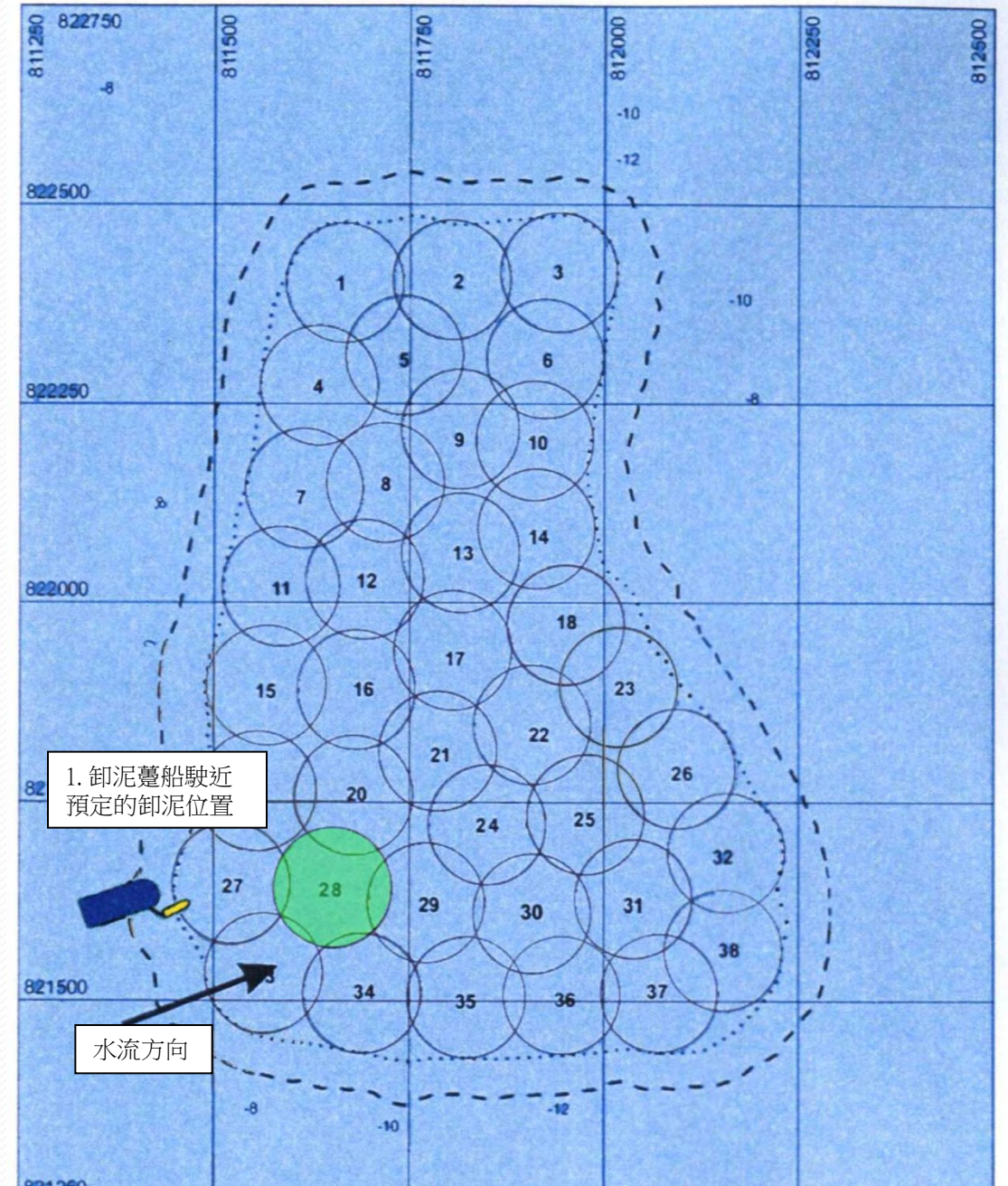


Disposal Methodology 卸置方法



卸泥躉船

泥坑



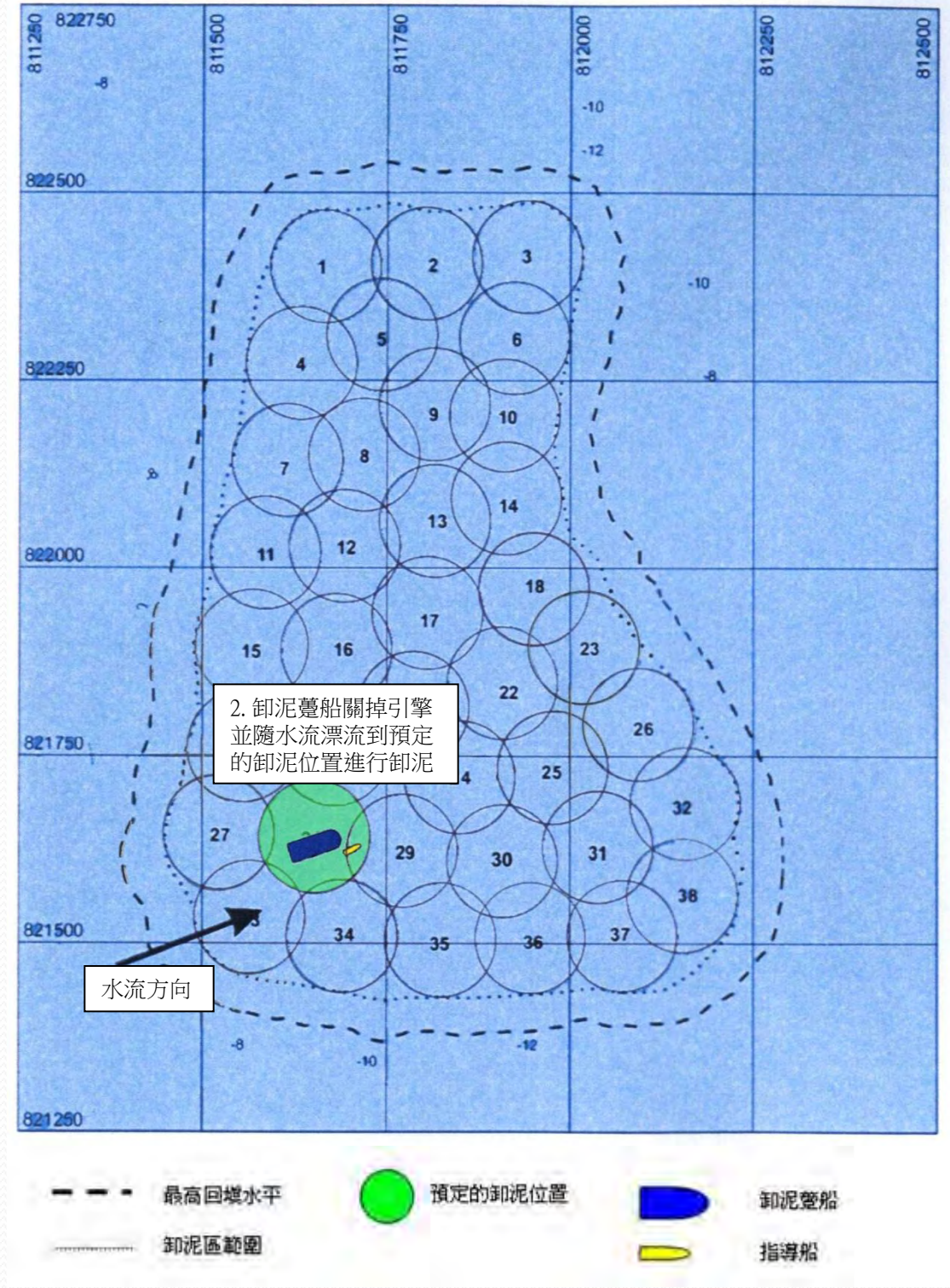
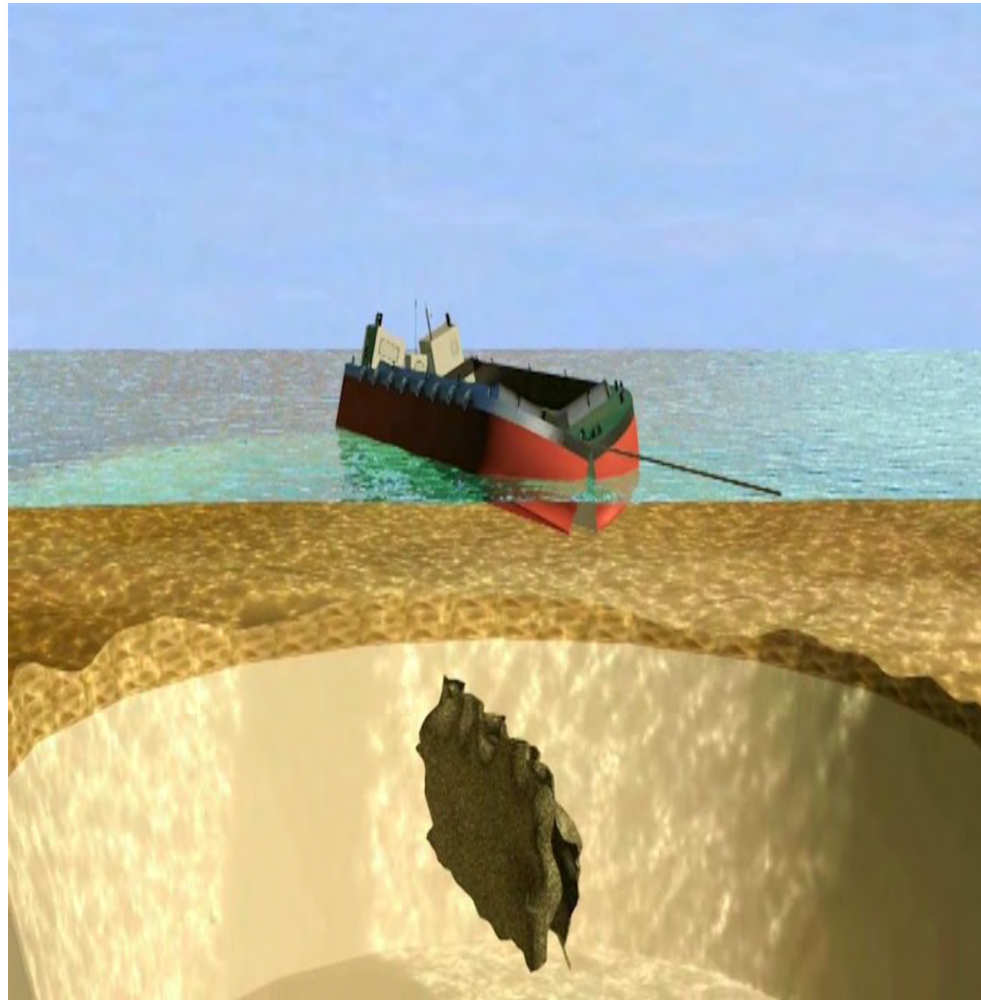
1. 卸泥躉船駛近預定的卸泥位置

水流方向

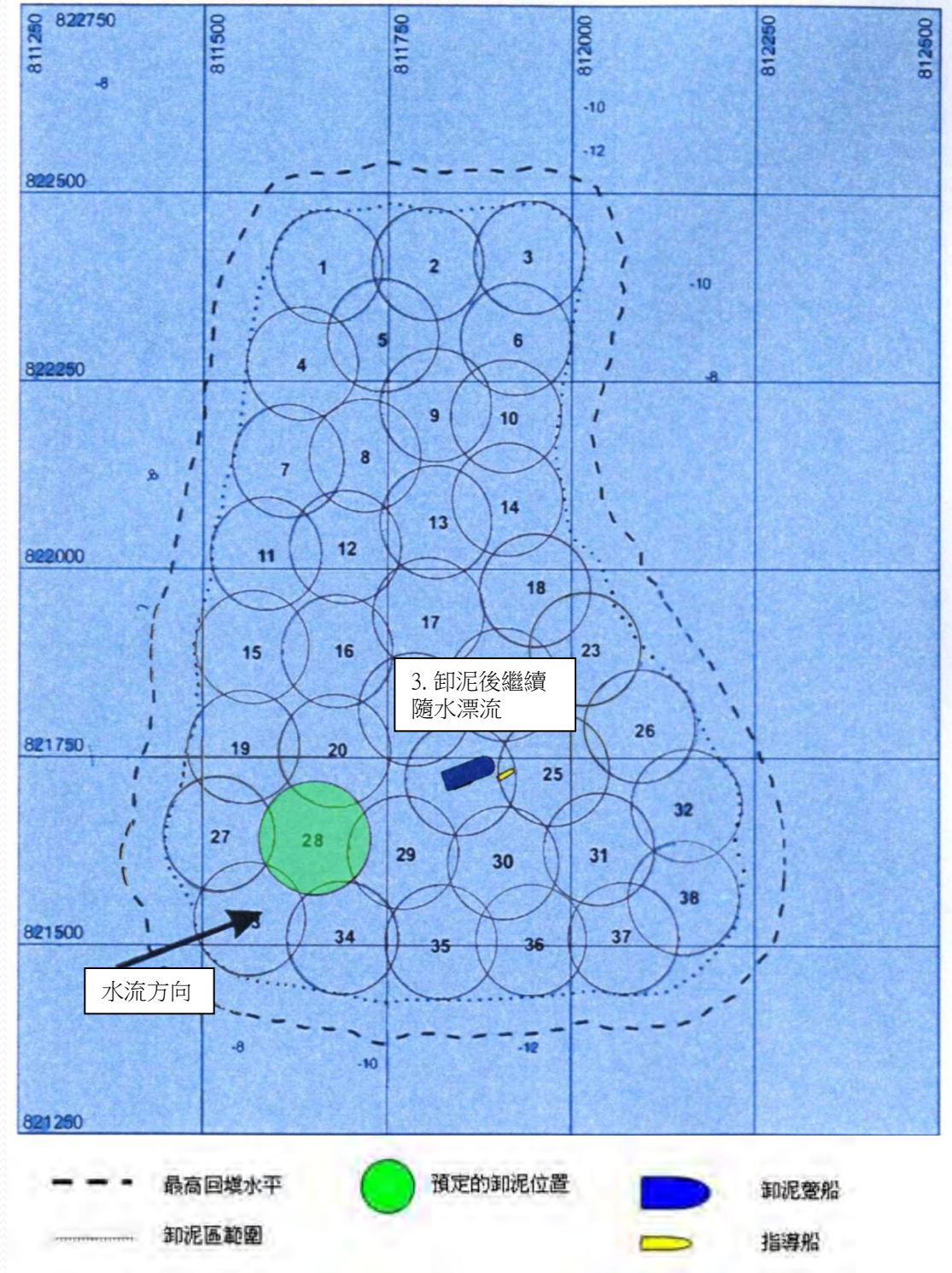
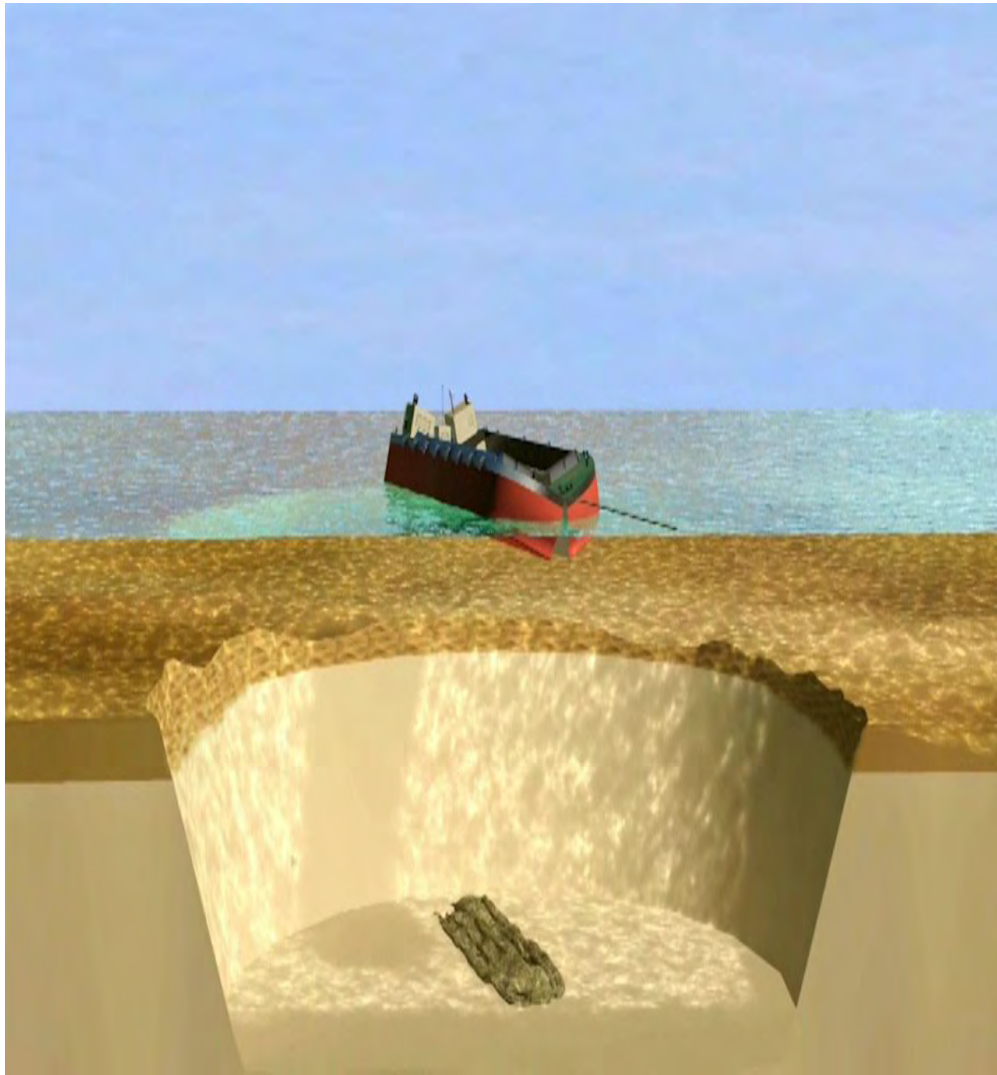
- 最高回填水平
- 預定的卸泥位置
- 卸泥躉船
- 指導船



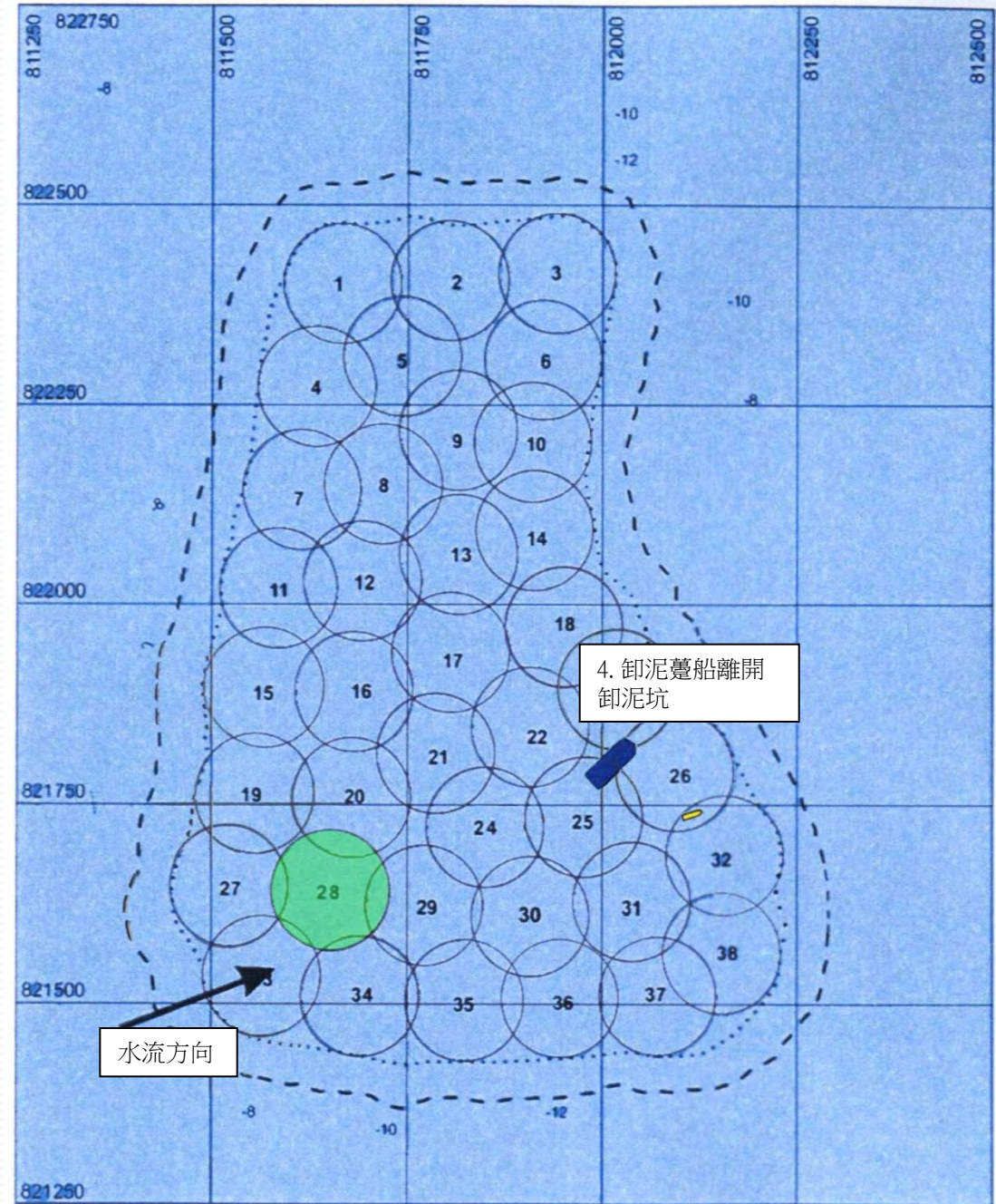
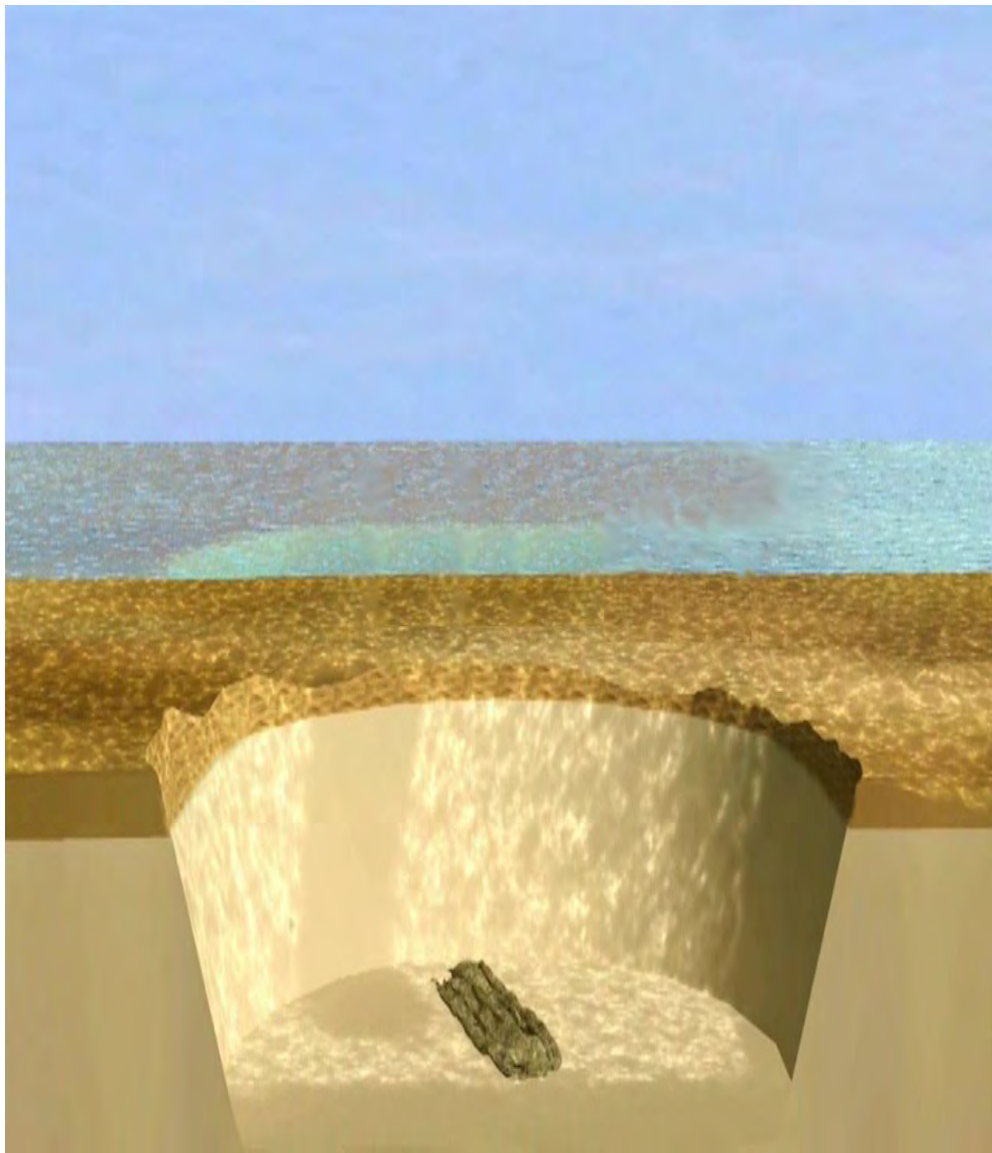
Disposal Methodology 卸置方法



Disposal Methodology 卸置方法



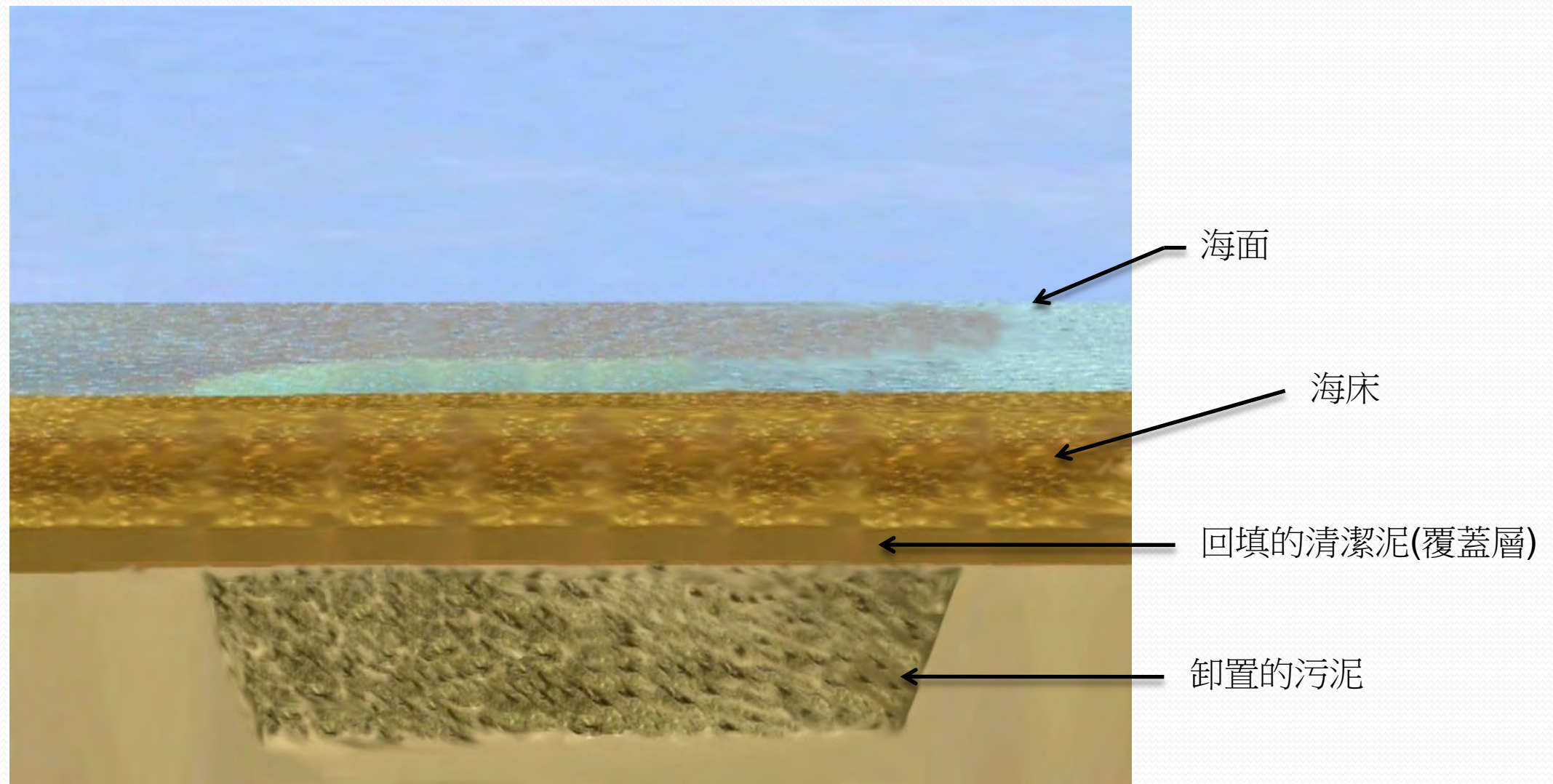
Disposal Methodology 卸置方法



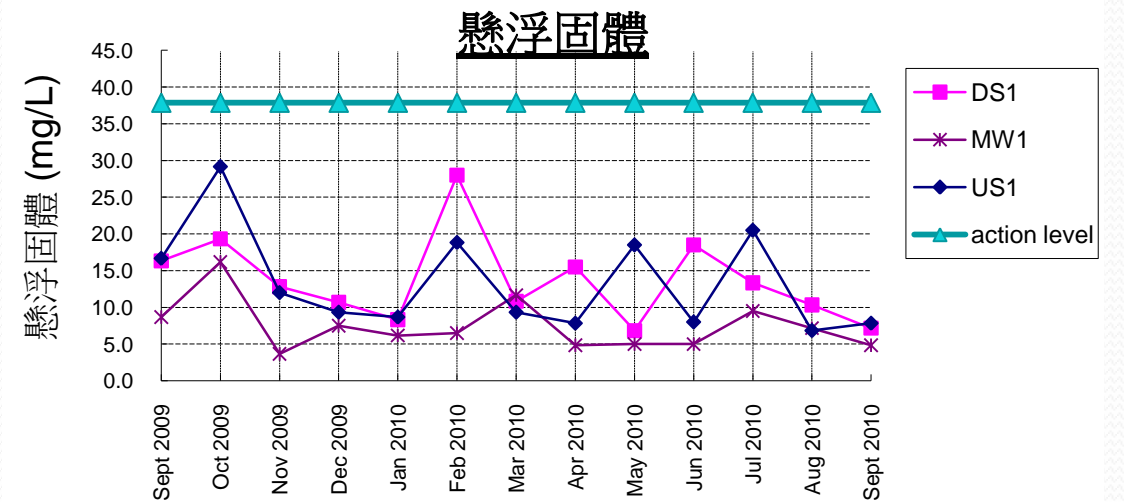
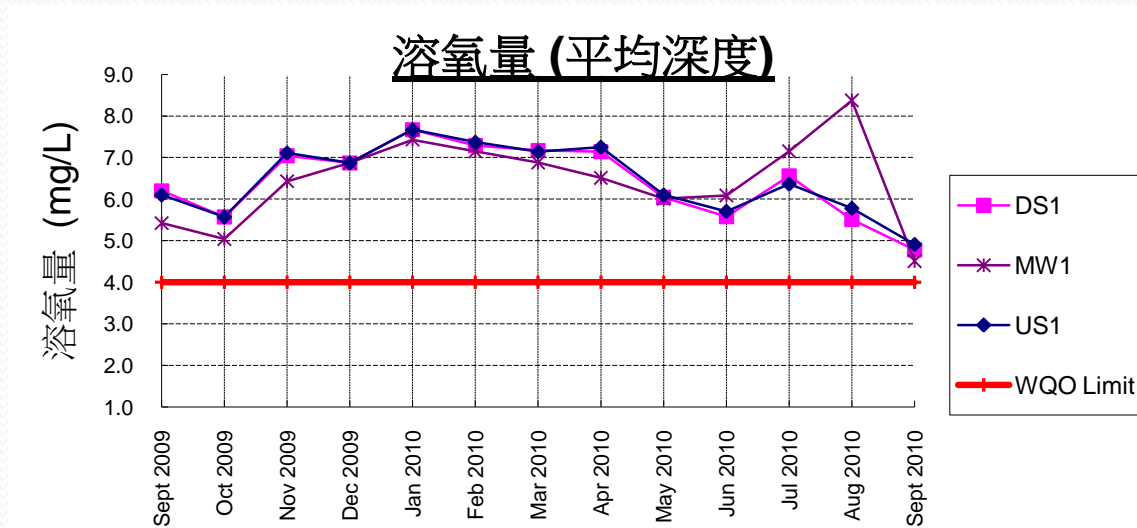
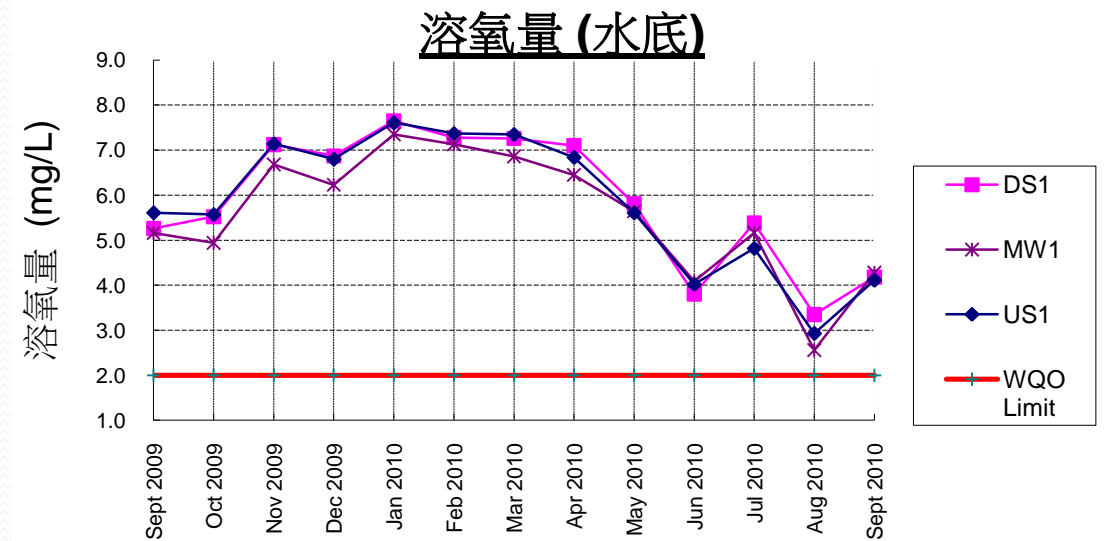
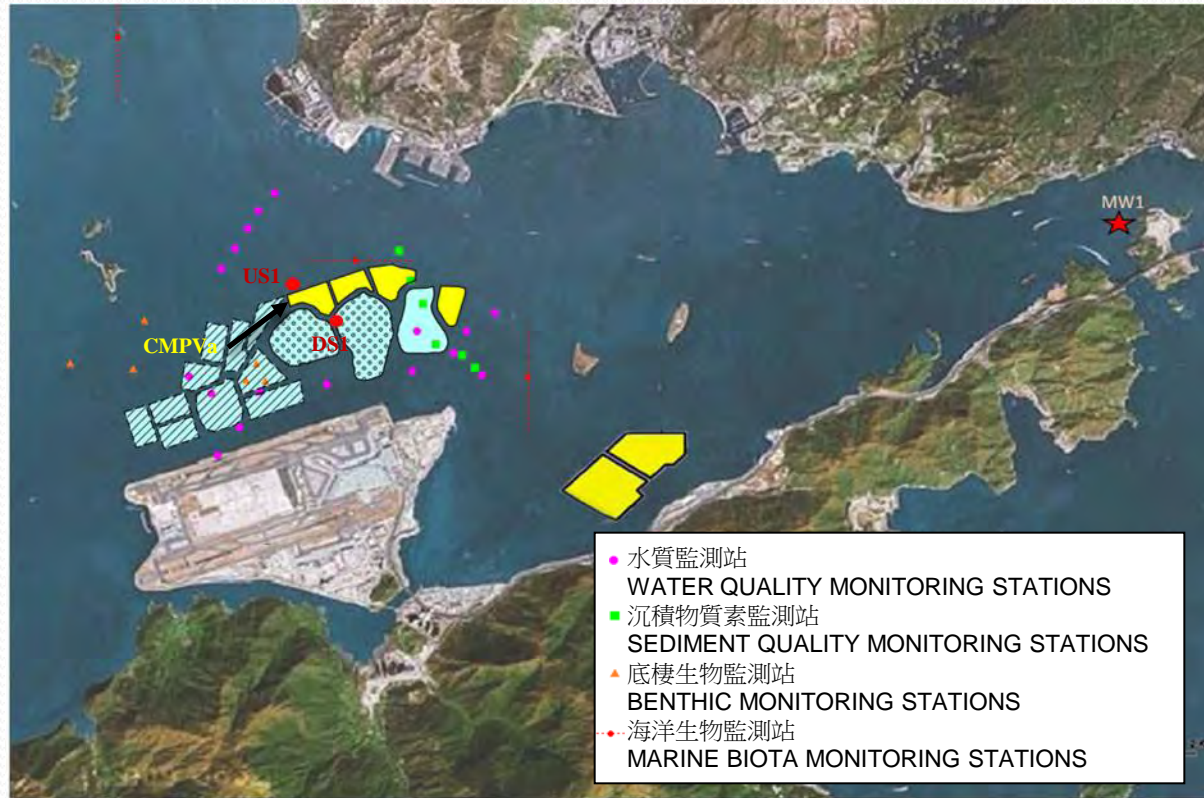
- 最高回填水平
- 預定的卸泥位置
- 卸泥躉船
- 卸泥區範圍
- 指導船



完工後的設施 Facility after Completion



水質監測資料



多謝



香港特別行政區政府發展局



土木工程拓展署