

...a new **perspective** on **Accessibility** in Hong Kong



What's New



..a new perspective on **Accessibility** in Hong Kong

Introduction

The new perspective on Accessibility in Hong Kong is an all-encompassing look at disabilities from every angle. Accessibility is not just physical access, it is the right for persons with a disability to enjoy the freedom of access to everything. More importantly, it is not just about words, this booklet is about the change that has been made through EAS for the new perspective of Hong Kong adapting from being a semi-hostile city for people with disabilities to a disability-friendly and compliant World City.

Universal Accessibility

Hong Kong gives the world the impression of a wealthy society, but the division for people with disabilities is very wide. The purpose of the study was to integrate and network the existing facilities and faculties within Hong Kong, both for the local resident and for the overseas visitor.

The Rehabaid Society gives emphasis on quality and equal opportunities living. A barrier-free environment does not apply only to architecture. It is not only about hardware, but also about the software side of the issue. Communication and understanding are the biggest impediments to the participation of the disabled citizen in the integration of society, after mobility and ease of access.



Hong Kong has no central coordination unit where all aspects of disability are brought together under one umbrella, where all interaction between disabilities can take place and where exchange of ideas can be listened to and improvements made.

environmental advisory service



What's New

Background

There is a plethora of websites for disabilities, studies, new technologies, new standards, design manuals and laws etc. pertaining to Hong Kong that can be found by the internet user, together with the Convention on the Rights of Persons with Disabilities, but no correlation between them.

The Environmental Advisory Service (EAS), which is an arm of the Rehabaid Society, has taken the first step in making a difference; in utilizing the professional expertise and experience of EAS to provide stewardship for Universal Accessibility. The Three Strategic Goals for People with Disabilities was therefore born with the aim of an all encompassing inter-active website. The Three Goals were Accessible Design, Accessible Living and Research & Development, linked together through the EAS portal. This is portrayed graphically as shown overleaf with the various "goals" of each section itemized.

EAS

The aim of EAS is to encourage inclusive design of the physical environment that enables people with special needs to make the most of their lives, and to be as independent as possible.

EAS advocates equal rights for people with special needs within the community. EAS promotes improvement of the environment so as to enable people with disabilities to integrate on equal terms into all areas of society, including education, employment and housing opportunities, recreation and leisure, communication and transportation.

The new EAS website covers all these issues and with the advances in microcomputer technology and computer programming, a new generation of computer access provides a full and unencumbered access to virtually the complete range of the three goals of Accessible Design, Accessible Living and Research & Development. There is no reason why people with disabilities should not also enjoy this new technology.

EAS is committed to the shaping of the environment which helps people with special needs to achieve their potential and to integrate into the social, cultural and economic life of the community.

environmental advisory service



EAS Webpage

Universal Accessibility

A Universal Accessibility Web-Page has been created from these three strategic goals as a communication link for all aspects of disabilities; to be interactive and to provide useful information for both local persons with a disability and for visitors, as accessible tourism, coming to Hong Kong.

A Research & Development (R&D) arm of the EAS has also been set up. Technology in relation to disability is much more than lack of internet/computer access. It involves all the communication tools and assistive devices enabling a person with a disability to be independent and an active participant in all areas of the community.



Accessible Design

Accessible Design is the end-product of all factors incorporating Universal Design, Barrier-free environment and assistive technology. Barrier-free design and assistive technology provide a level of accessibility for people with disabilities, but often result in stigmatized, separate solutions. Accessible Design is a broad-spectrum solution that helps everyone, not just people with disabilities.

Environmental Advisory Service (EAS) was established in 1981 as a community based architectural consultancy service dedicated to providing a comprehensive and unique service on the provision of a better quality of life for the elderly and people with disabilities, as well as encouraging the design of physical environments that enable the elderly and people with disabilities to make the most of their lives and to be as independent as possible.



Accessible Living

Accessible Living is not about treating people with disabilities the same, but treating them differently so they are treated the same. Accessible Living is a gathering of information, most of which is already available on the Internet, and to collate it all into an easy user-friendly vehicle to quickly access information on all aspects relating



Research & Development

This Research & Development site aims to keep abreast of the latest technology and advancements in the care for people with a disability and to liaise with the relevant research Institutes and Universities for practical implementation and feed-back from the end-user. Information on resources and information available in other Professional/Academic Institutions and reports on seminars, conferences and symposiums will be posted here.

environmental advisory service

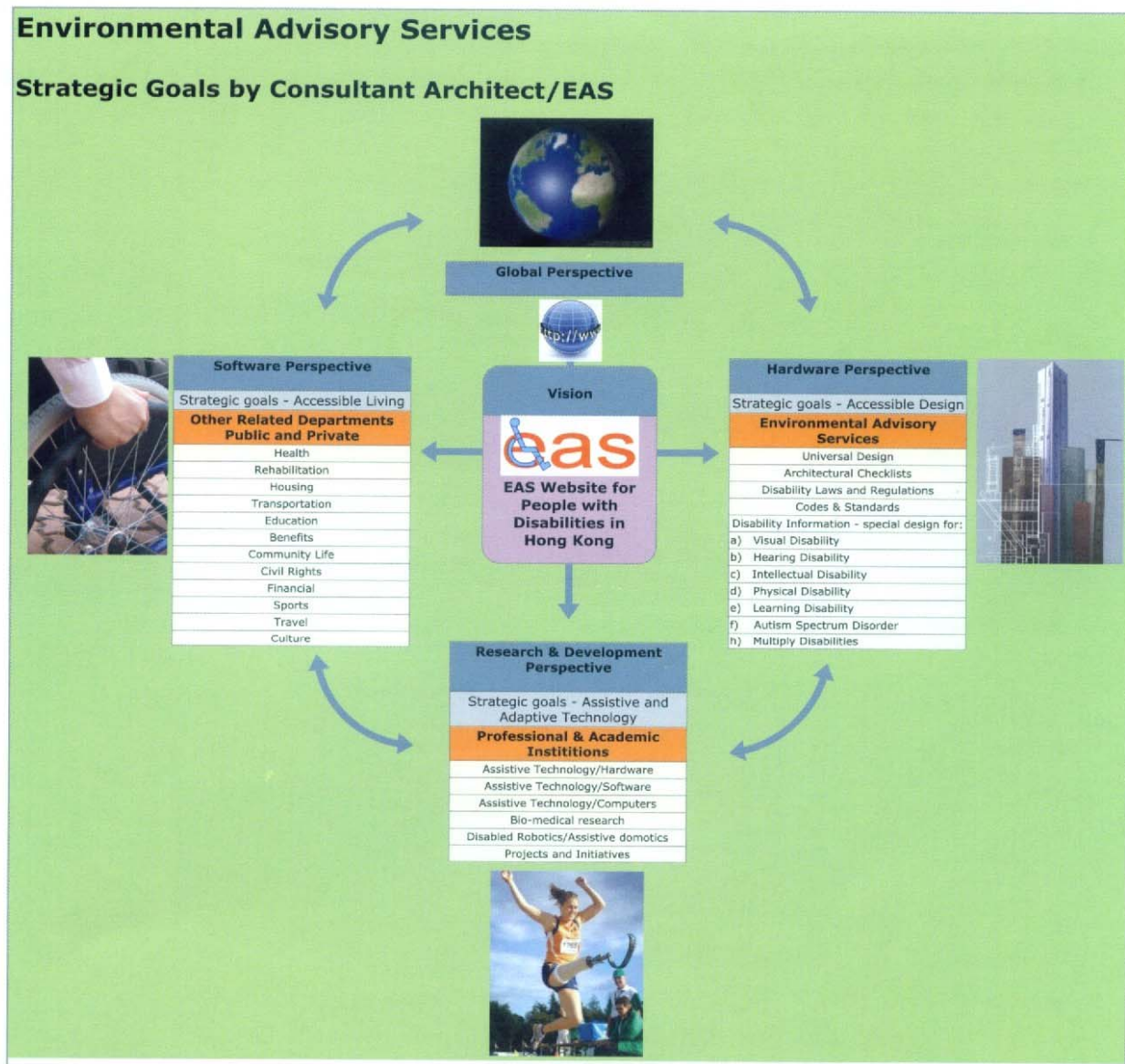


Universal Accessibility

Universal Accessibility

Environmental Advisory Services

Strategic Goals by Consultant Architect/EAS



The Three Strategic Goals by EAS

environmental advisory service

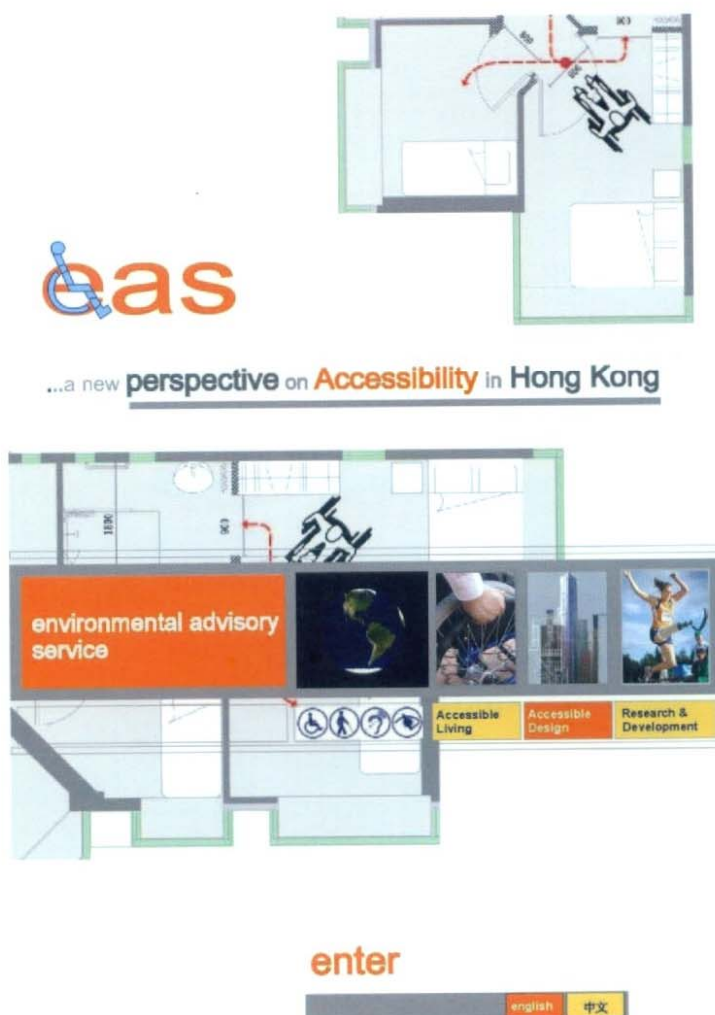


EAS Website

The New EAS Website

The three strategic goals will be amalgamated into the three sections of the new EAS website coming up in the future, which will be found at www.easrs.org.hk. This is a comprehensive package combining around 200 web-links to other related sites, and with an inter-active feedback page to promote enquiries and change to the built environment.

The Home-page linking the three sections is reproduced below, with a choice of English or Traditional Chinese language.



environmental advisory service



Accessible Design

Accessible Design

After accessing the homepage, the three introductory pages of Accessible Design, Accessible Living and Research & Development give a background to the contents of each section. These are shown below, with the first being Accessible Design, linking Aims, Services, Workshops, Publications and Contact Us, together with other related links.



environmental advisory services

The EAS Webpage for People with Disabilities in Hong Kong - Accessible Design

Accessible Design

Aims

Services

Workshops

Publications

Contact Us

Chinese

Links

Accessible Design is the end-product of all factors incorporating Universal Design, Barrier-free environment and assistive technology. Barrier free design and assistive technology provide a level of accessibility for people with disabilities, but often result in stigmatized, separate solutions. Accessible Design is a broad-spectrum solution that helps everyone, not just people with disabilities.

Environmental Advisory Service (EAS) was established in 1981 as a community based architectural consultancy service dedicated to providing a comprehensive and unique service on the provision of a better quality of life for the elderly and people with disabilities, as well as encouraging the design of physical environments that enable the elderly and people with disabilities to make the most of their lives and to be as independent as possible.

Universal Accessibility

The new perspective on Accessibility in Hong Kong is an all-encompassing look at disabilities from every angle. Accessibility is not just physical access, it is the right for persons with a disability to enjoy the freedom of access to everything. More importantly, EAS is committed in continuing the fight for changing Hong Kong from being a semi-hostile city for people with disabilities to a disability-friendly and compliant World Class City.

As stated in Accessible Living, the principle is not about treating people with disabilities the same, but treating them differently so they are treated the same.

EAS brings together all the Disability Information currently available, together with active [research projects](#), and provides a specialized architectural information and advisory service on the environmental needs of people with disabilities.

Should you have any need for Disability Information or wish to use our specialist services for Accessible Design, please [Contact Us](#).

environmental advisory service



Accessible Living

Accessible Living

The second section is Accessible Living, which is the most expansive of the three sections with hyper-links covering Rehabilitation, Education, Benefits, Transport, Employment, Sports and Travel & Arts.



environmental advisory services

Accessible Living

Accessible Design

Research & Development

[Home](#)

The EAS Webpage for People with Disabilities in Hong Kong - Accessible Living

Accessible Living

[Rehabilitation](#)
[Education](#)
[Benefits](#)
[Transport](#)
[Employment](#)
[Sports](#)
[Travel & Arts](#)

[Chinese](#)

Accessible Living
 Accessible Living is not about treating people with disabilities the same, but treating them differently so they are treated the same.

 Hong Kong has set up the Equal Opportunities Commission (EOC) in 1996 with legislation in place to prevent discrimination. This is detailed in the [Disability Discrimination Ordinance](#).

People with Disabilities in Hong Kong
 The **Equal Opportunities Commission (EOC)** website provides information on legislation, advising on the rights of the disabled in all aspects of education, employment and access, amongst others.

The Hong Kong Government's policy towards disabilities is to integrate people with disabilities as much as possible into the community.

The [Social Welfare Department \(SWD\)](#) implements the government policy on social issues and is supported by various non-government organizations.

Associations for the Disabled in Hong Kong

Hong Kong has several Associations dedicated to their disability groups as follows. These give specific information on the particular disability.

- [The Hong Kong Federation of Handicapped Youth \(HKFHY\)](#)
- [The Hong Kong Federation for the Blind](#)
- [The Hong Kong Society for the Blind](#)
- [The Hong Kong Society for the Deaf](#)
- [The Spastics Association of Hong Kong](#)
- [The Hong Kong Downs Syndrome Association](#)
- [The Hong Kong Dyslexia Association](#)
- [The Society for the Welfare of Autistic Persons](#)
- [1 Step Association](#)
- [Echovalley Evangelistic Association for the Handicaps](#)

environmental advisory service



R&D

Research & Development

The third and last section deals with the innovative Research & Development page, itemizing some of the most recent works undertaken by Research Institutions and the Academia, both locally in Hong Kong as well as overseas. Topics covered are: Assistive Technology Hardware, Assistive Technology Computers, Biomechanics Research, Disabled Robotics and Projects and Initiatives.



environmental advisory services

The EAS Webpage for People with Disabilities in Hong Kong - Research & Development

Research & Development

Assistive Technology Hardware
Assistive Technology Computers
Biomechanics Research
Disabled Robotics
Project and Initiatives

Research & Development

This Research & Development site aims to keep abreast of the latest technology and advancements in the care for people with a disability and to liaise with the relevant research institutes and Universities for practical implementation and feed-back from the end-user.

Information on resources/information available in other Professional/Academic Institutions and reports on Universal Accessibility seminars, conferences and symposiums will be posted here.

R&D (Disabilities) in the Universities

EAS has now teamed up with the major Universities in Hong Kong and has Advisers/EAS to facilitate on-going or new R&D projects. As with all R&D work, the best solution is a marriage between the innovative ideas and the practicality in the field. EAS is the link between the inventor and the user. New ideas are put to the test and feedback provided by the end-user for improving the design/product.

EAS has Advisers/EAS in the following Academia, and some of their current work with People with a Disability is shown as follows:-

[City University of Hong Kong](#)

[Hong Kong Polytechnic University](#)

'DesignPlus' Fashion Competition teams up PolyU students with students of other educational institutes to show their concern towards the community and people with special need by designing specialized clothing for them.

[The Hong Kong University of Science and Technology](#)

See [R&D Robotics](#) webpage

[Chinese University of Hong Kong](#)

See [Hybrid Assistive Knee Brace](#) webpage

8

environmental advisory service



Contact Us

Universal Accessibility

All aspects of Disability have now been incorporated into a single access-point, which should be beneficial and quick to all internet users. The website is designed to cater for equal access and opportunity for all users. The important criteria will be feedback, and changes are inevitable, promoting progress.

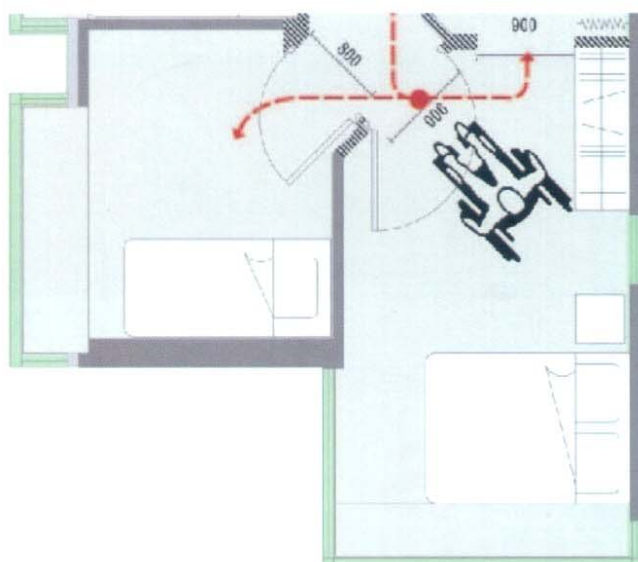
Therefore, please contact us on eas@easrs.org.hk with your comments and ideas.



Location of eas

Environmental Advisory Service
Room 201, Core W
The Hong Kong Polytechnic University,
Hung Hom, Kowloon, Hong Kong

Tel: (852) 2364 3626
Fax: (852) 2364 3681



生活環境輔導服務



無障礙生活

無障礙設計

調查研究及發展

...香港無障礙全新面貌



香港無障礙全新面貌

引言

我們希望從多角度去推動和實踐香港的無障礙觀念，不單局限於身體上的無障礙，更重要是給與有特殊需要人士心靈上的自由，締造一個友好及真正無障礙的世界級都市。透過這本小冊子「香港無障礙全新面貌」，大家可更了解「生活環境輔導務」在推動和改善無障礙觀念的工作。

暢道通行

對世界而言，香港是個富裕及文明的社會，但仍然存在對殘疾人士的分歧。我們的目的是搜集和聯繫現有有關殘疾人士的設施及機構資料，為香港居民和海外訪客服務。

「復康資源協會」推動平等優質的生活。一個無障礙環境不應該局限於建築設計。除硬件外，亦要考慮到軟件的配合，有效的溝通和諒解可改善身體上和通道上的不便，鼓勵殘疾人士融入社會。

事實上，香港目前並沒有中央協調的機構，可供殘疾人士溝通、交流和表達意見，從而作出適當的改善。



生活環境輔導服務



新增內容

背景

香港現已有許多互聯網站提供有關殘疾人士的資料，包括傷殘程度、最新研究、技術、標準、設計指南和法律等。有關「身心障礙者權利公約」的詳情亦可以在互聯網上查閱。

然而，網站與網站之間缺乏相互關聯。有見及此，「復康資源協會」轄下的「生活環境輔導服務」踏出了第一步，運用專業技能和經驗去搜集及整理有關暢道通行的各種資訊。我們的網站共有三個主題目標（包括：無障礙生活、無障礙設計和調查研究及發展），藉此把其他相關網站連結一起。本小冊子刊登了每個主題目標的首頁以供參考。

「生活環境輔導服務」

「生活環境輔導服務」提倡通用環境設計，令有特殊需要人士，可以盡展所能，過獨立而豐盛的生活。

我們鼓吹傷健同享平等權利。藉著改善環境設計，讓殘疾人士融入社會，有平等就業和接受教育的機會；在選擇居所、社交和乘搭交通工具時，讓他們得享相同權益，能夠毫無阻隔地進出各公眾或私人場所。

全新的「生活環境輔導服務」網站運用先進的電腦技術和程式編寫，令使用者全面及自由地找尋以上三個主題：無障礙生活、無障礙設計和調查研究及發展的相關資訊，希望各殘疾人士能享受和善用此服務和技術。

我們致力締造一個傷健共融的生活環境，讓有特殊需要人士發揮潛能，在社會、文化及經濟各方面盡展所長，貢獻社會。



暢道通行

本網站透過三個主題目標，把其他有關殘疾人士的網站連結起來，為香港居民和海外訪客提供互動及有用的資訊平台。

「生活環境輔導服務」已展開調查研究及發展的工作。科技對於殘疾人士來說，不單是提供有關電腦和互聯網的服務，它更涉及所有相關的通訊工具和輔助設備，使殘疾人士能獨立生活和活躍於社會。



無障礙設計

無障礙設計主題包含了通用設計、暢通易達環境和輔助科技的各種元素。暢通易達設計和輔助科技無疑能解決殘疾人士行動受限制的問題，但方法往往是單一的和帶有標籤效應的。而無障礙設計則是一個具包容性的設計理念，不但能幫助有特殊需要人士，更能讓每一個人都可受益。

「生活環境輔導服務」在一九八一年創立，為市民提供建築環境的顧問服務，致力改善有特殊需要人士的生活質素，特別是對殘疾人士和長者的生活環境，提供獨特而綜合的環境設計服務。同時，我們提倡通用環境設計，令有特殊需要人士可盡展所能，過獨立而豐盛的生活。



無障礙生活

無障礙生活並非單純視殘疾人士為健全人士，而是要透過各種不同的配套去營造包容共濟、人人共享平等的社會環境。本網頁匯集了許多有用的資料，大家可透過此平台，很容易找到有關無障礙生活的各種資訊。



調查研究及發展

調查研究及發展主題致力緊貼最新協助殘疾人士改善生活的技術，並將有關技術的實際應用情況和殘疾人士的意見反饋給相關的科研機構和大學。其他專業和學術機構的資源及信息，以及無障礙研討會和會議的最新報告也會在此刊登。

生活環境輔導服務

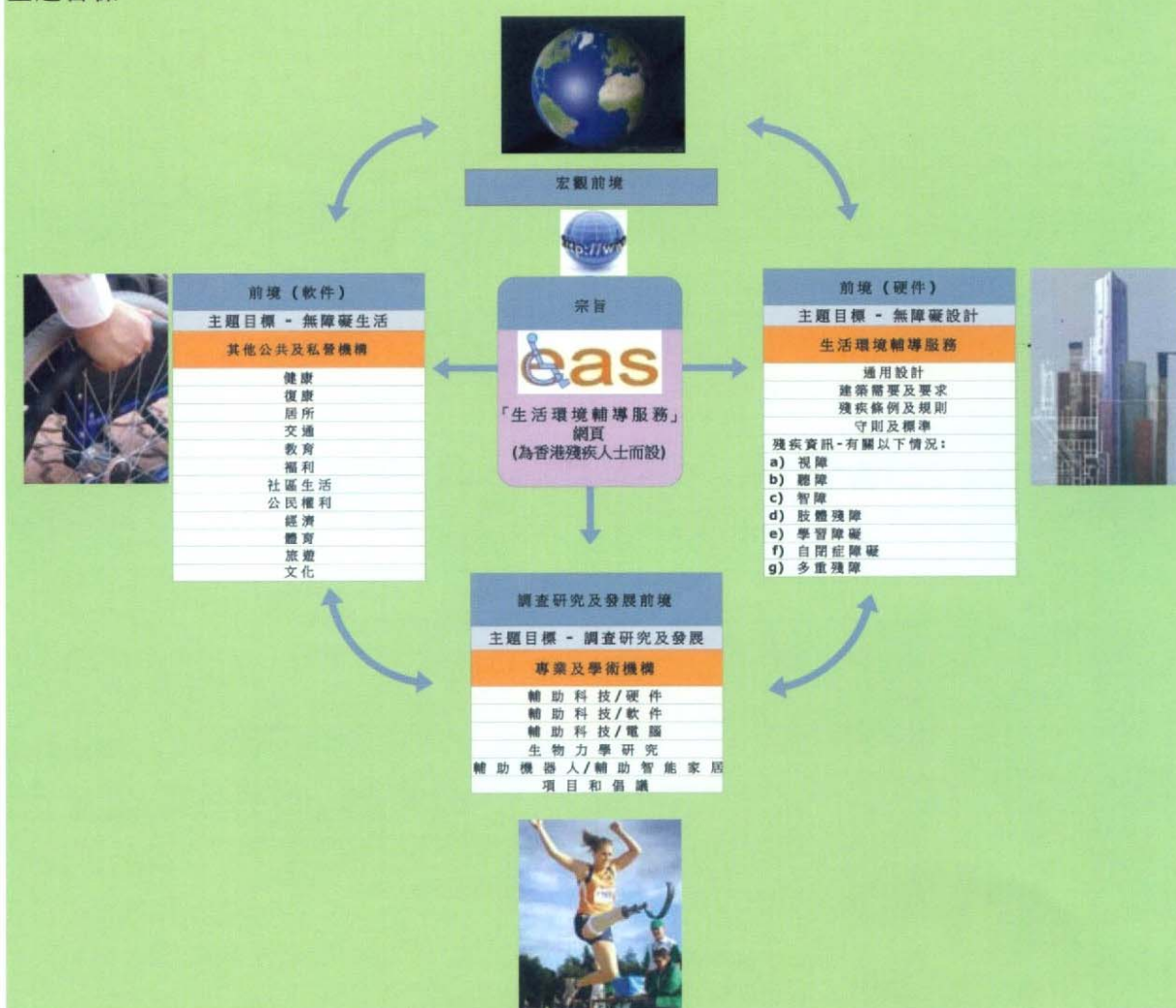


暢道通行

暢道通行

生活環境輔導服務

主題目標



「生活環境輔導服務」的三個主題目標

生活環境輔導服務



生活環境輔導服務網頁

全新的「生活環境輔導服務」網頁

一個建基於三個主題目標的全新「生活環境輔導服務」網站快將面世，詳情可瀏覽 www.easrs.org.hk。

本網站由大約 **200** 個相關鏈結組成，藉此鼓勵有需要人士詢問和改善建築環境。主頁(見下圖)連接三個主題目標，可選擇繁體中文或英文作使用語言。



進入

english

中文

生活環境輔導服務



無障礙設計

無障礙設計

進入主頁後，可看見三個主題目標：無障礙設計、無障礙生活和調查研究及發展的版面。首先會介紹無障礙設計的服務宗旨、服務範圍、課程及講座、出版刊物、聯絡我們和相關網址。



生活環境輔導服務

無障礙生活

無障礙設計

調查研究及發展

主頁

A+ A- reset

彩色版本

香港無障礙環境一站通-無障礙設計

無障礙設計

服務宗旨

服務範圍

課程及講座

出版刊物

聯絡我們

相關網址

English

無障礙設計包含了通用設計、暢通易達環境和輔助科技的各種元素。暢通易達設計和輔助科技在某程度上能夠解決殘疾人士行動受限制的問題，但解決方法往往是單一的和帶有標籤效應。無障礙設計是一個巨最大包容性的設計理念，不僅要幫助有特殊需要的人士，而要讓每一個人都可受益。

「生活環境輔導服務」在一九八一年十月創立，旨為市民大眾提供建築環境顧問服務。我們致力改善有特殊需要人士的生活質素，特別是殘疾人士和長者的生活環境，提供獨特的綜合環境設計服務。同時，我們提倡通用環境設計，令有特殊需要的人士，可盡展所能，過獨立而豐盛的生活。

暢道通行

我們展望可從多角度去推動和實踐香港無障礙觀念，不局限於身體上的無障礙，更重要是給與特殊需要人士心靈上的自由。

無障礙生活建基於一視同仁，每一個人都應享有被平等對代的權利，不論殘疾與否。

我們會貫徹無障礙觀念，締造一個友好及真正無障礙的世界級都市。

「生活環境輔導服務」網羅最新的傷健資訊。透過多個正在進行的研究計劃、建築環境資訊平台及環境設計專業諮詢服務，改善殘疾人士的生活環境。

如大家想了解更多有關無障礙設計的專業資訊，或對我們的專業諮詢服務有興趣，歡迎 [聯絡我們](#)。



生活環境輔導服務



無障礙生活

無障礙生活

第二部分是無障礙生活，提供復康、教育、福利、交通、就業、體育和旅遊等多方面的相關鏈結。



生活環境輔導服務





[無障礙生活](#)[無障礙設計](#)[調查研究及發展](#)

[主頁](#)

A+ A- reset



[彩色版本](#)



香港無障礙環境一站通-無障礙生活

無障礙生活



復康
教育
福利
交通
就業
體育
旅遊

English

無障礙生活

無障礙生活並不是單純的視殘疾人士為健全人士的環境，而是透過各種不同的配套去營造出一個包容共濟、人人共享平等的社會環境。
香港平等機會委員會於1996年成立，透過執行各反歧視條例，去達到消除歧視、無障礙的生活環境。
殘疾人士在香港
在平等機會委員會的網頁內，大家能找到一切有關殘疾人士在香港內接受教育、通行等等的法律和權利的資料。

平等機會委員會
EQUAL OPPORTUNITIES COMMISSION

香港政府的殘疾人士政策，是盡量協助他們融入社區的生活。

社會福利署負責實踐政府這方面的政策。而政策得以成功發揮效用，就有賴各非政府組織的配合和支持。

為殘疾人士服務的非政府機構

香港有多間為殘疾人士服務的非政府機構，它們有著各種不同的服務對象，名單如下：

- [香港傷殘青年協會\(傷青\)](#)
- [香港失明人互聯會](#)
- [香港盲人輔導會](#)
- [香港聾人福利促進會](#)
- [香港羅能協會](#)
- [香港唐氏綜合症協會](#)
- [The Hong Kong Dyslexia Association](#)
- [自閉症人士福利促進會](#)
- [自強協會](#)
- [回聲谷傷健福音協會](#)
- [堅毅忍者](#)

7

生活環境輔導服務



調查研究及發展

調查研究及發展

最後一個部分是關於調查研究及發展，這裡搜羅了近期香港及海外研究機構和學術界的工作，內容包括：輔助科技硬件、輔助科技電腦、生物力學研究、輔助機器人 / 輔助智能家居及項目和倡議。



生活環境輔導服務

搜尋...

無障礙生活 無障礙設計 調查研究及發展

主頁 A+ A- reset 彩色版本



調查研究及發展

輔助科技硬件
輔助科技電腦
生物力學研究
輔助機器人
輔助智能家居
項目和倡議

English

香港無障礙環境一站通-調查研究及發展

這一研究與發展網站致力緊貼最新協助殘疾人士的技術，並將技術的實際執行情況和殘疾人士的意見反饋給有關的科研機構和大學。

其他專業 / 學術機構的資源 / 信息和無障礙研討會，會議和專題討論會的報告將在此張貼。

各大學在輔助科技的研究及發展

「生活環境輔導服務」現在聯同香港各主要大學並且設有顧問協助正在進行的或新的研發項目。與所有的研發工作一樣，最好的解決方案往往是一個創新理念和實用性的應合。「生活環境輔導服務」正正是發明者和用者之間的橋樑，將新的想法付諸測試和將用者的意見反饋，改進產品的設計。

「生活環境輔導服務」在學術界的顧問如下：

[香港城市大學](#)

[香港理工大學](#)



在「康健服裝設計比賽 2010」比賽過程中，理大學生夥拍其他中學或專上學院同學以隊制形式設計康健服裝，藉以提高學界對長者及殘疾人士在衣著上的關注，以及鼓勵學生關心在衣著有特別需要的人士。透過集體創作，亦能充份表現他們對社會的關注。

[香港科技大學](#)

[輔助智能機械人網頁](#)

[香港中文大學](#)

[智能混合助力膝架網頁](#)

生活環境輔導服務



聯絡我們

暢道通行

本網站收集了各方面有關殘疾人士的資訊，網站內容是公開的，讓互聯網用戶隨意透過此平台快速尋找所需的資料。

你的意見對本網站的發展非常重要，歡迎提供任何有關無障礙生活及環境的資訊。如有任何疑問或意見，歡迎聯絡我們 eas@easrs.org.hk。



位置

生活環境輔導服務
香港九龍紅磡香港理工大學育才道
W座201室

電話：(852) 2364 3626

傳真：(852) 2364 3681