

For discussion on
10 December 2010

Legislative Council Panel on Home Affairs

Relocation to Central Pier 8 and Expansion of Hong Kong Maritime Museum

Purpose

This paper briefs Members on a proposed capital works project for the relocation to Central Pier 8 and expansion of the Hong Kong Maritime Museum (HKMM).

Background

2. Opened formally in September 2005, HKMM is an independent private museum open to the public. In October 2007, HKMM sent a proposal to the Government to relocate and expand the museum to Central Pier 8. The HKMM's proposal was discussed under the item "Future Development of Private Museums – Hong Kong Maritime Museum" (LC Paper No. CB(2)746/07-08(01)) at the meeting of the Legislative Council (LegCo) Panel on Home Affairs (HA Panel) on 11 January 2008. Members of the Panel were generally supportive of the HKMM's request for the Administration's support for its continued development and requested the Administration to consider actively the proposal.

3. We have since then been working closely with the HKMM to take forward its relocation and expansion project. We have made available a provision of \$14.468 million in money-of-the-day (MOD) prices for HKMM to commission consultants to prepare the detailed design of the museum at Central Pier 8 and work out the estimated cost for the project.

4. In the paper sent to the Panel for information on 5 February 2010, we mentioned that requests for financial support from private museums should be examined and processed on a case-by-case basis against the following five main parameters-

- (a) whether the development of the museum concerned will help maintain a diverse, pluralistic and vibrant cultural ecology in Hong Kong;
- (b) whether the theme and contents of the museum concerned will help preserve and promote Hong Kong's art, culture and heritage with special reference to the key areas where Hong Kong's unique and outstanding development is showcased;
- (c) whether the development of the museum concerned will help enhance Hong Kong's positioning as a creative economy and regional cultural hub;
- (d) whether the activities and programmes of the museum concerned will help foster partnership between the Government and the community by complementing the public museums managed and operated by LCSD; and
- (e) whether the museum would be managed by professional staff adopting internationally accepted code of practice.

PROJECT SCOPE AND NATURE

5. The proposed scope of the project comprises –

- (a) alteration of the existing building structure of Pier 8 and construction of new floor slabs and stairs for the new museum at Pier 8 with the following facilities:-
 - i) exhibition area with 15 themed gallery spaces;
 - ii) a special exhibition gallery;
 - iii) a museum shop;

- iv) a ticketing counter;
 - v) a museum café;
 - vi) a museum office;
 - vii) a Maritime Heritage Resource Centre;
 - viii) an artefacts and documents store room;
 - ix) delivery dock; and
 - x) ancillary service rooms e.g. toilets, E&M plant room, etc.
- (b) reinstatement of the existing museum premises at Murray House and museum office and storage space at Ma Hang Estate, Stanley, to bare shell interior conditions.

The project site includes the eastern berth of the lower and upper deck levels, the whole floor space of the public viewing deck and the roof viewing deck of Central Pier 8. A site layout plan, artistic impressions and floor layout plans are shown at Enclosures 1A, 1B to 1C and 2A to 2D respectively.

6. The project will be implemented in three phases –

- Phase A: Lower deck level at Central Pier 8 consists of museum office, artifacts and document store room, delivery dock and ancillary service rooms.
- Phase B: Upper deck and above levels at Central Pier 8 consists of museum exhibition gallery, special exhibition gallery, museum shop, ticketing counter, museum café and ancillary service rooms.
- Phase C: Reinstatement of the existing museum premises at Murray House at Stanley and museum office and storage space at Ma Hang Estate to bare shell conditions.

JUSTIFICATIONS

7. From the cultural policy's perspective, we welcome and encourage the establishment of private museums, which complement publicly-funded museums in maintaining a diverse museum presence in Hong Kong. As an international port city with over 100 years' history, Hong Kong's maritime history and traditions have great historical and cultural significance. The sustained development of the HKMM helps showcase Hong Kong's unique and outstanding development in this area.

8. The museum is currently located at Murray House in Stanley. It has a gross area, with annexes, of 650 metre square (m²) - with 427m² of gallery space and an additional 400m² of museum office and storage space in two shop units in Ma Hang Estate. Since the museum was opened in 2005, the collection has gone from about 650 items to about 3 000, and the library from about 20 to about 2 000 books. The present location, Stanley, is too far from Hong Kong's central districts and many schools in Hong Kong and the site has no room for any further expansion of the museum.

9. Having regard to the main parameters mentioned in paragraph 4 above, we support HKMM's proposed relocation and expansion of the museum to Central Pier 8. This project will help HKMM to develop itself into a major maritime museum that is commensurate with Hong Kong's standing as an international port city and as a regional cultural hub.

FINANCIAL IMPLICATIONS

10. The total estimated cost of the project is \$101.5 million in MOD prices. HKMM undertakes to contribute to the capital cost of the project, subject to the state of the HKMM Trust. HKMM is currently making efforts in raising funds from other sources to meet this commitment. We aim to settle the respective amount to be borne by the Government and the HKMM before seeking PWSC/FC's funding approval for the project.

11. HKMM estimates that the annual operating cost of the new museum at Central Pier 8 will range from \$12 million to \$14 million. The Government intends to provide funding support up to a maximum of \$4.429 million per annum for five years starting from the commissioning of the new museum subject to detailed vetting of HKMM's finalized budget.

IMPLEMENTATION TIMETABLE

12. We plan to seek the approval of the Public Works Sub-committee and the Finance Committee of LegCo for the proposed project in January 2011 and February 2011 respectively.

13. Subject to funding approval by the Finance Committee, HKMM plans to start Phases A and B works in May 2011 and Phase C works in April 2012. After modification works and statutory inspection of the museum are completed, the new museum at Central Pier 8 is tentatively scheduled for opening in December 2012.

PUBLIC CONSULTATION

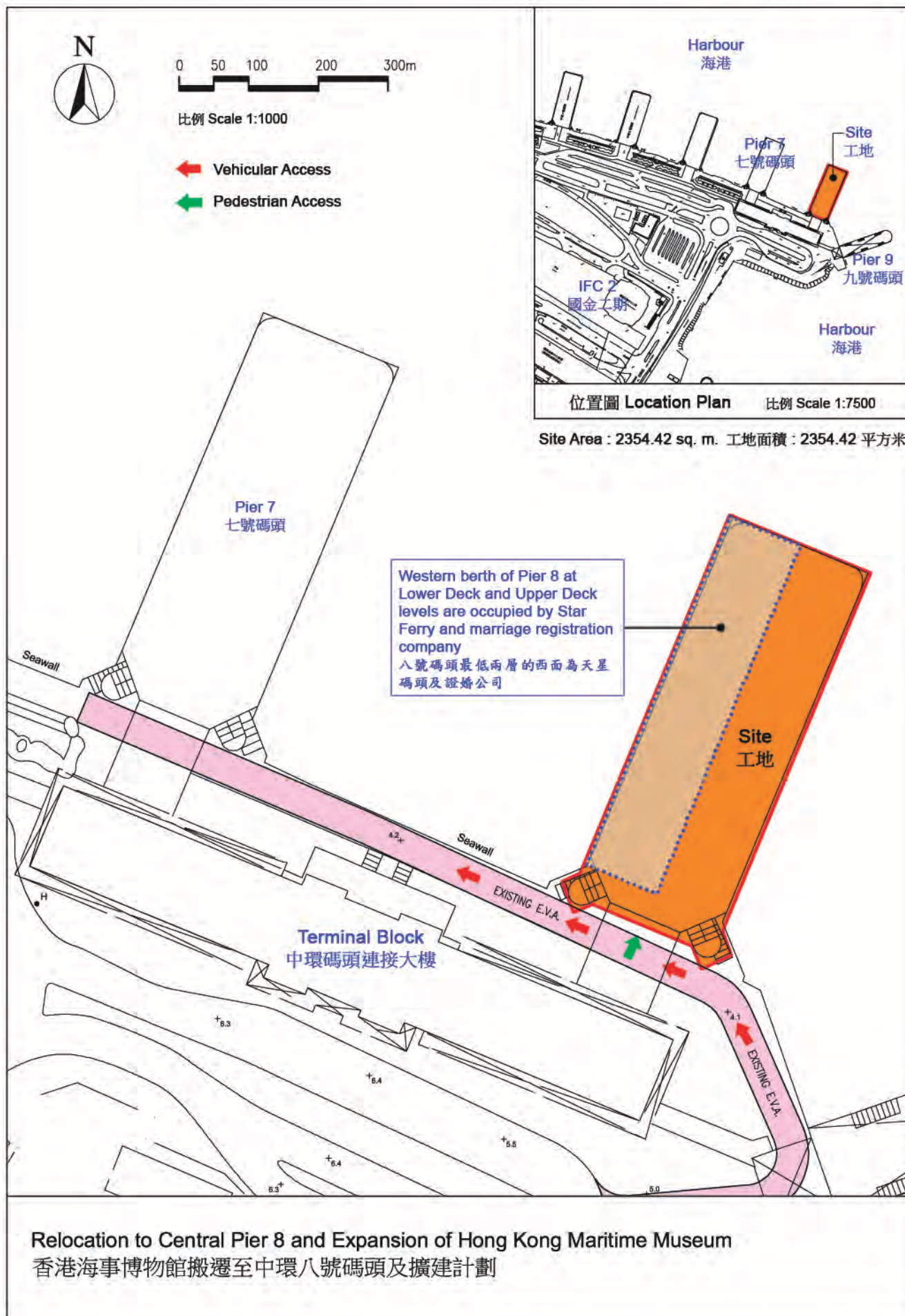
14. We consulted the Culture, Leisure and Social Affairs Committee of the Central and Western District Council on the proposed relocation of the HKMM to Central Pier 8 in April and June 2010. Whilst there were different views among the members, members in general did not object to the relocation project. Some were however concerned about the loss of existing open space on the public viewing deck and the roof viewing deck. HKMM has taken these views into consideration insofar as the constraints of space and the requirements of museum operations allow. Specifically, HKMM will leave the roof viewing deck as an open public space with landscaping and casual seating. The museum café, entry foyer and museum retail spaces will also be open to free public access and will give views into the museum and, through the extensive use of glazing, out into the Victoria Harbour in both directions.

15. On 25 June 2010, HKMM submitted a planning permission application to TPB under section 16 of the Town Planning Ordinance for portions of G/F, 1/F, 2/F and 3/F (including Mezzanine Floor) of Pier 8 at Central for the proposed exhibition hall and ancillary restaurant (museum café) uses. TPB approved the application with conditions on 13 August 2010.

Advice Sought

16. Members are invited to support the funding application for the relocation to Central Pier 8 and expansion of HKMM.

Home Affairs Bureau
December 2010





從東北面望向香港海事博物館的構思圖

View of Hong Kong Maritime Museum from Northeast view (artistic impression)



從尖沙咀遠處望向香港海事博物館的構思圖

View of Hong Kong Maritime Museum from Northwest far view (artistic impression)

Relocation to Central Pier 8 and Expansion of Hong Kong Maritime Museum
香港海事博物館搬遷至中環八號碼頭及擴建計劃



博物館天台觀景層的室內構思圖

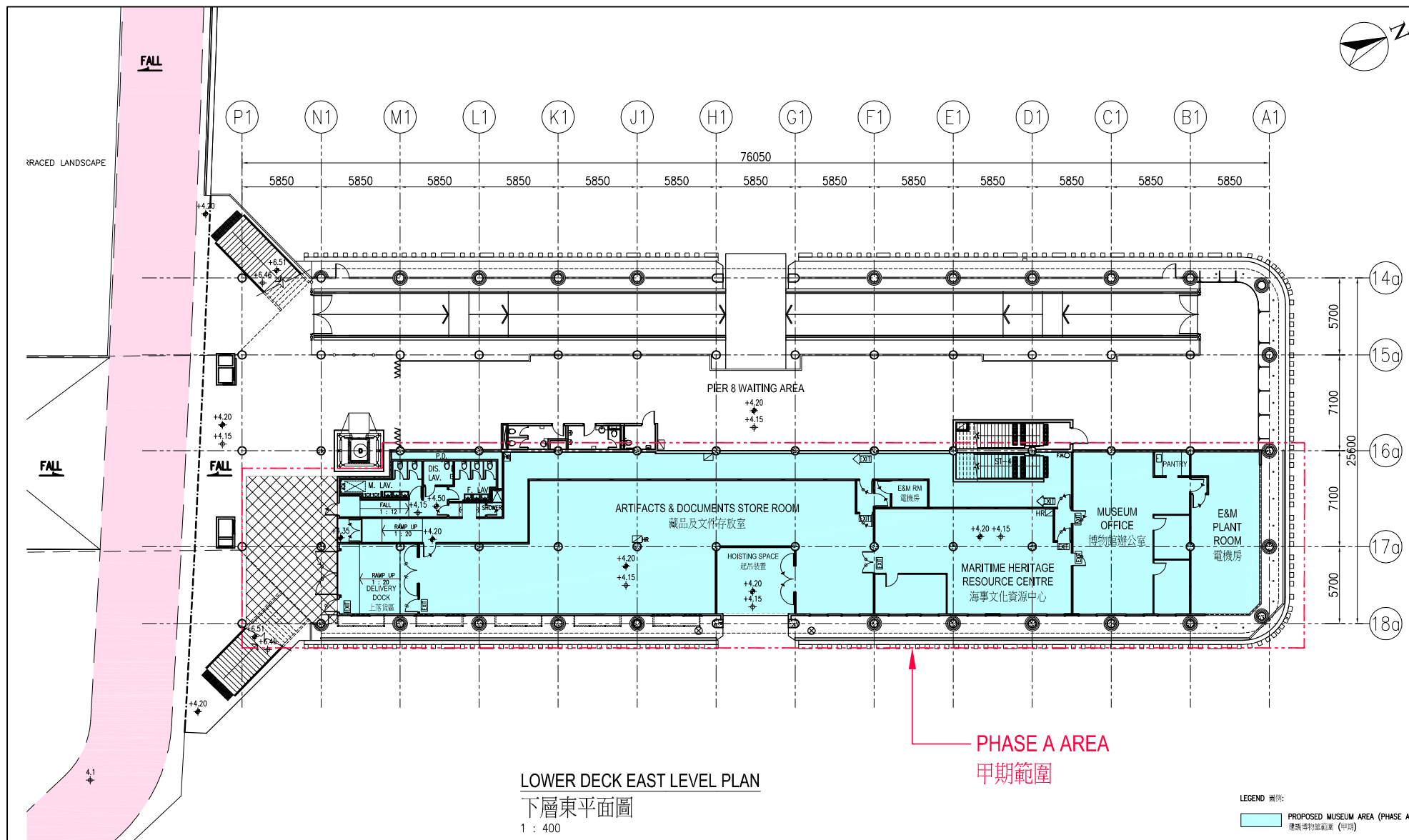
Interior View of Roof Viewing Deck Level (artistic impression)



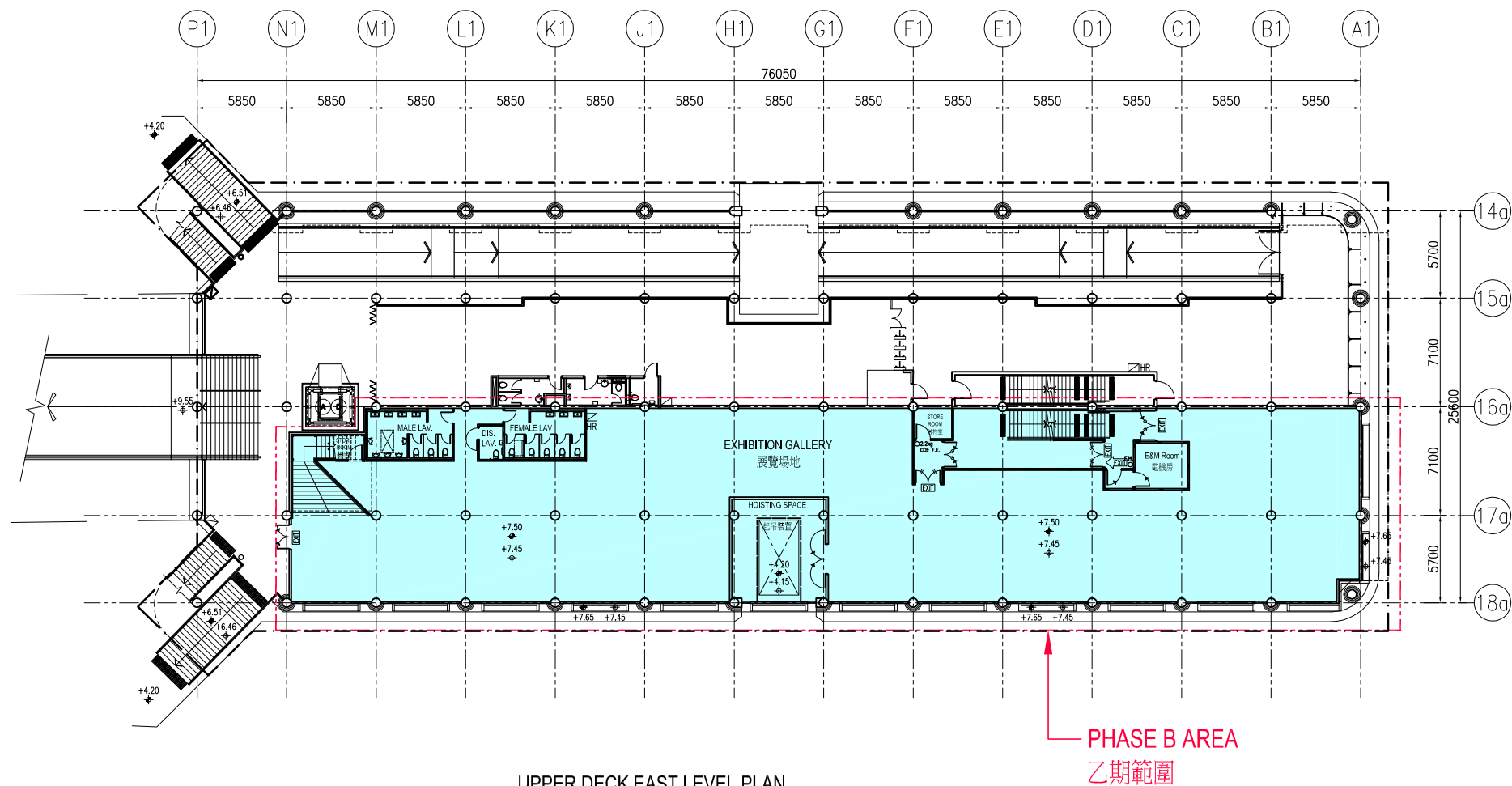
博物館上層東的室內構思圖

Interior View of Upper Deck East Level (artistic impression)

Relocation to Central Pier 8 and Expansion of Hong Kong Maritime Museum
香港海事博物館搬遷至中環八號碼頭及擴建計劃



Relocation to Central Pier 8 and Expansion of Hong Kong Maritime Museum
香港海事博物館搬遷至中環八號碼頭及擴建計劃



UPPER DECK EAST LEVEL PLAN

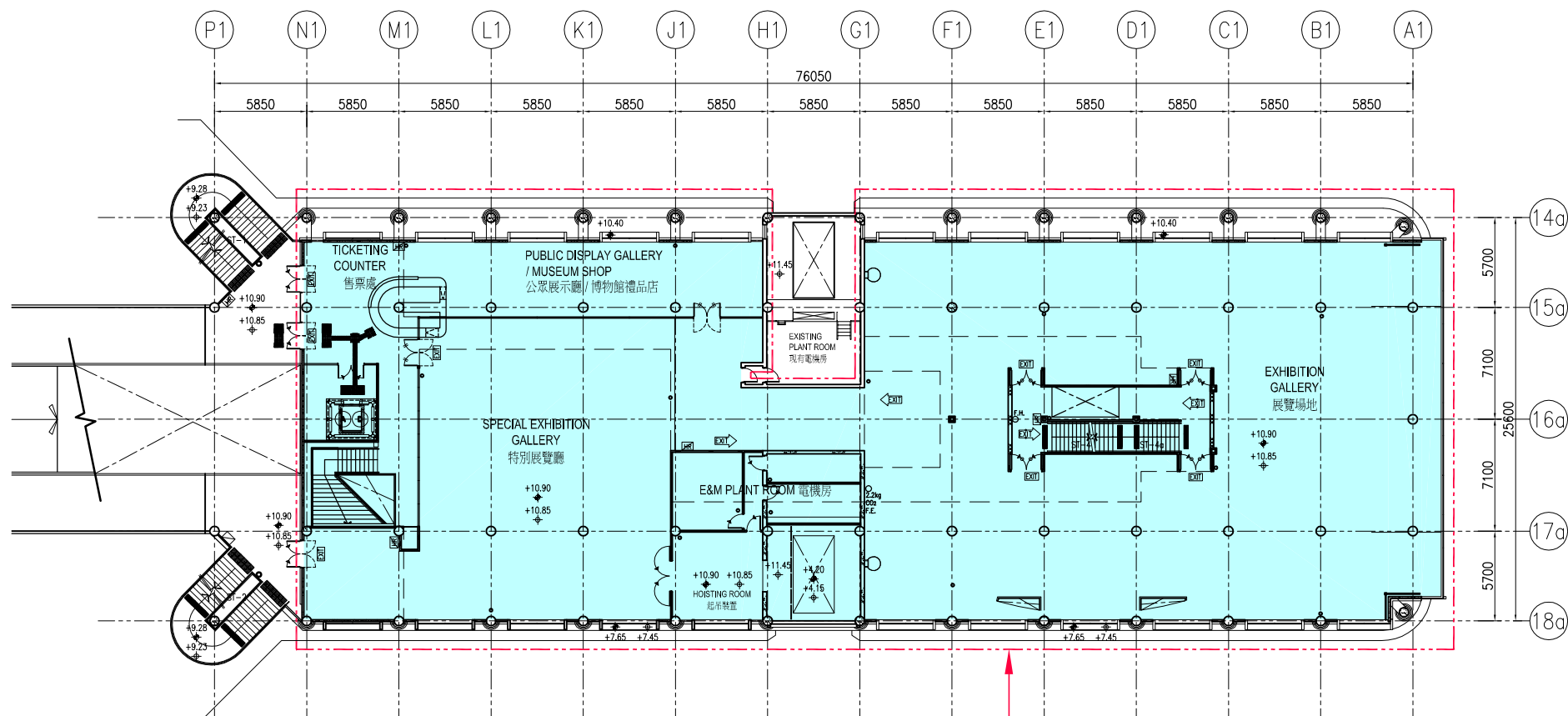
上層東平面圖

1 : 400

LEGEND 圖例:

PROPOSED MUSEUM AREA (PHASE B)
建議博物館範圍 (乙期)

Relocation to Central Pier 8 and Expansion of Hong Kong Maritime Museum
香港海事博物館搬遷至中環八號碼頭及擴建計劃



PUBLIC VIEWING DECK LEVEL PLAN

公眾觀景層平面圖

1 : 400

PHASE B AREA

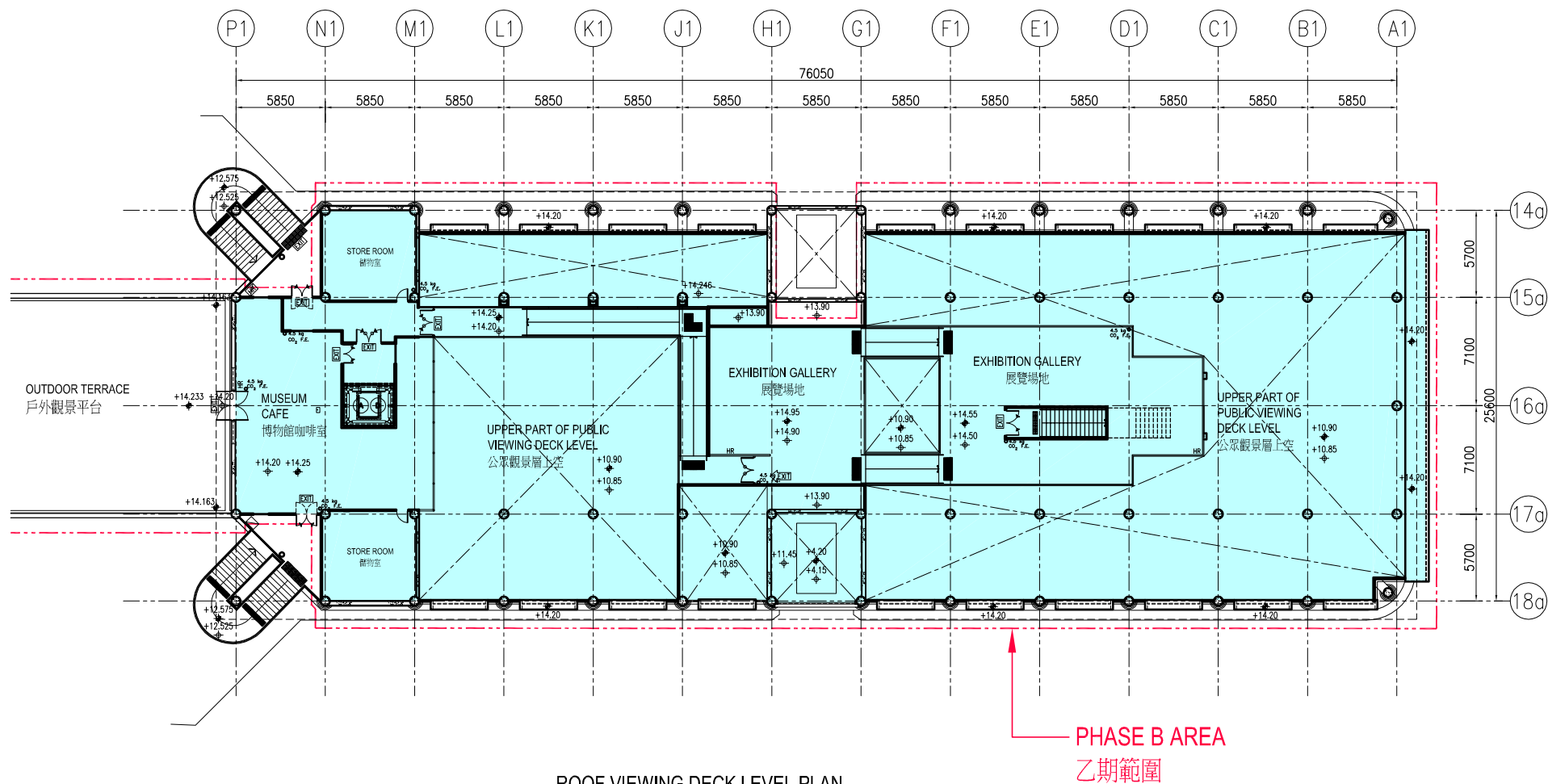
乙期範圍

LEGEND 圖例:

PROPOSED MUSEUM AREA (PHASE B)
建議博物館範圍 (乙期)

Relocation to Central Pier 8 and Expansion of Hong Kong Maritime Museum

香港海事博物館搬遷至中環八號碼頭及擴建計劃



ROOF VIEWING DECK LEVEL PLAN

天台觀景層平面圖

1 : 400

LEGEND 圖例:

PROPOSED MUSEUM AREA (PHASE B)
建議博物館範圍 (乙期)

Relocation to Central Pier 8 and Expansion of Hong Kong Maritime Museum
香港海事博物館搬遷至中環八號碼頭及擴建計劃