



可持續發展委員會  
Council for  
Sustainable Development

**BRIEFING FOR  
LEGISLATIVE COUNCIL  
PANEL ON ENVIRONMENTAL AFFAIRS  
ON  
COUNCIL FOR SUSTAINABLE DEVELOPMENT'S  
“COMBATING CLIMATE CHANGE:  
ENERGY SAVING AND CARBON EMISSION REDUCTION IN  
BUILDINGS” PUBLIC ENGAGEMENT PROCESS**

立法會環境事務委員會

簡介可持續發展委員會  
「紓緩氣候變化：從樓宇節能減排開始」社會參與過程

**24.10.2011**



可持續發展委員會  
Council for  
Sustainable Development

# Introduction of PE Process & IR Document

## 簡介社會參與過程 及誠邀回應文件內容



可持續發展委員會  
Council for  
Sustainable Development

## □ Growing concerns about impacts of climate change 氣候變化的影響愈來愈受關注



**Food Supply**  
糧食供應



**Water Supply**  
水供應



**Health**  
健康



**Ecosystem**  
生態系統



**Built Environment**  
建築環境



**Socio-economic Issues**  
社會經濟影響

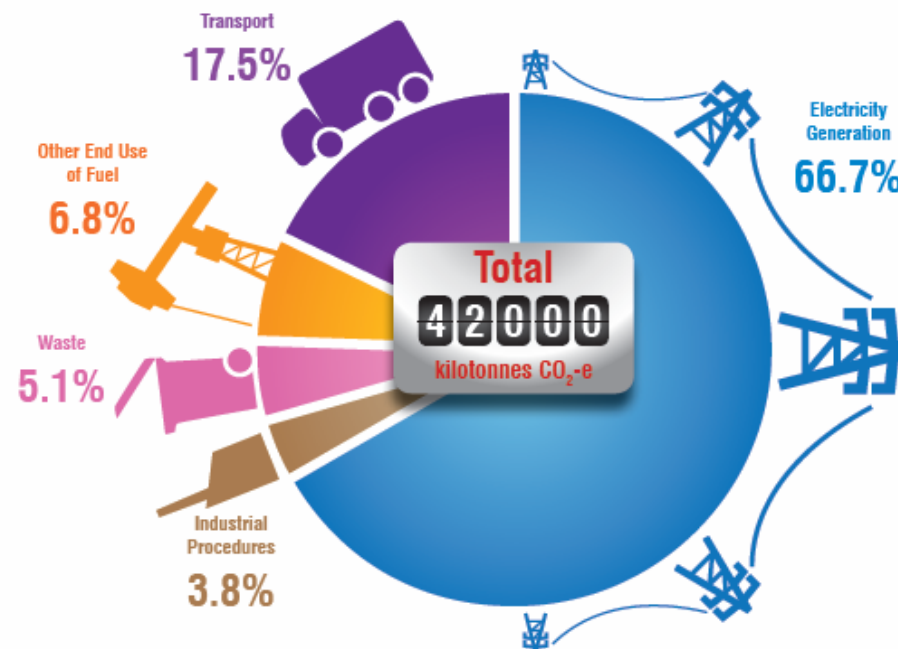


可持續發展委員會  
Council for  
Sustainable Development

- **Hong Kong's GHG emissions per capita were about six tonnes and electricity generation accounted for about 67% of our total emissions (2008)**

香港的人均溫室氣體排放量約6公噸，發電佔總排放量大約67% (2008)

Hong Kong's greenhouse gases emission by sectors in 2008





可持續發展委員會  
Council for  
Sustainable Development

- **89% of our city's electricity is consumed in buildings**  
89% 的電力用於建築物

Hong Kong's electricity consumption by sectors in 2008





可持續發展委員會  
Council for  
Sustainable Development

## □ Targeting four core building user groups 以四個主要建築用戶群組為主要對象



Household  
住戶



Office  
辦公室



Retail  
零售



Catering  
餐飲



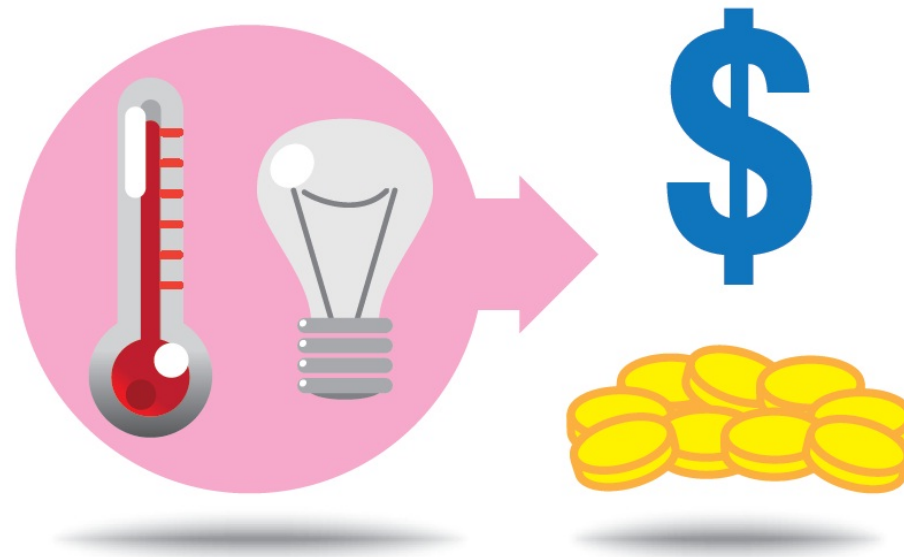
可持續發展委員會  
Council for  
Sustainable Development

## 3 S Action –

**S**ave energy · **S**ave money · **S**ave the Earth

## 3 S 行動 –

節能 · 慳錢 · 愛惜地球



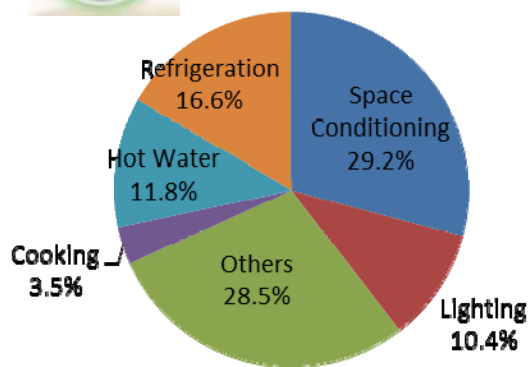


可持續發展委員會  
Council for  
Sustainable Development

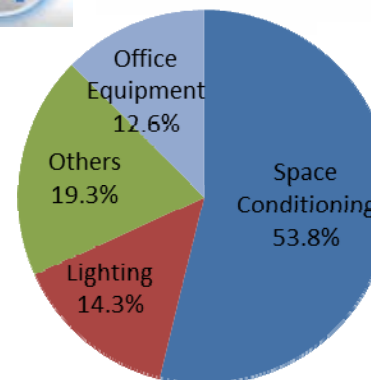
## Electricity consumption 電力使用情況



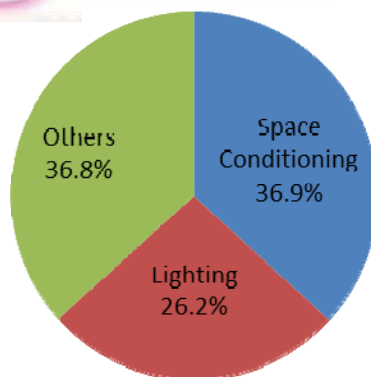
### 住宅 Household



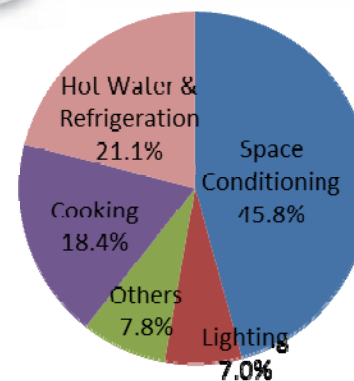
### 辦公室 Office



### 零售 Retail



### 餐飲 Catering







可持續發展委員會  
Council for  
Sustainable Development

## Basis of the Invitation for Response Document

<<誠邀回應文件>> 內容建基於

**Views collected from four small group meetings and five focus group meetings (Mar – May 2011)**

從四場小組會議及五場焦點小組會議收集的意見





可持續發展委員會  
Council for  
Sustainable Development

## Potential action areas for further energy saving in buildings

識別進一步提升樓宇節能減排的可行方案

### □ Systemic Enhancement

制度優化

### □ Facilitation of Behaviour Change

促使行爲改變



可持續發展委員會  
Council for  
Sustainable Development

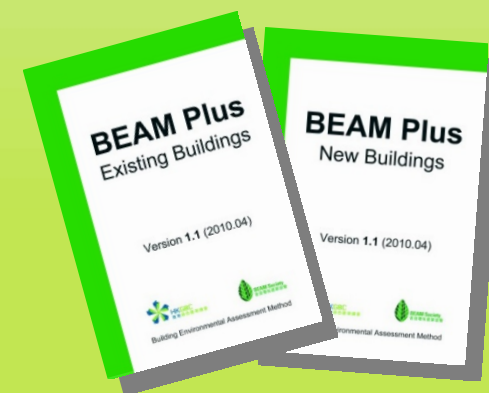
## Systemic Enhancement

### 制度優化

- (i) **Tightening the Building Energy Code (BEC)**  
收緊《建築物能源效益守則》



- (ii) **Providing recognition for buildings achieving high energy efficiency**  
向高能源效益的建築物提供認可





可持續發展委員會  
Council for  
Sustainable Development

### (iii) Extension of the application of the Mandatory Energy Efficiency Labelling Scheme (MEELS) 擴大強制性能源效益標籤計劃的涵蓋範圍



### (iv) Tightening up the energy efficiency grading levels for room air conditioners and refrigerators under the MEELS 收緊強制性能源效益標籤計劃下 空調及雪櫃的能源評級

| ENERGY LABEL<br>能源標籤   |  |
|--|--|
| more efficient 效益較高  | Grade 1                                      |
| 1  |  |
| 2  |  |
| 3  |  |
| 4  |  |
| 5  |  |
| less efficient 效益較低  |  |
| Annual Energy Consumption (kWh)<br>每年的耗電量 (千瓦時)                  | 96   |
| Dehumidifying Capacity (litres)<br>除濕能力 (公升)                     | 8.75   |
| Energy Factor (kWh/tonne)<br>能效係數 (千瓦時/噸)                        | 1.71   |
| Declaration<br>聲明  | NEC<br>及<br>ANSI<br>2013 / 2009<br>及<br>2013 |
| Model<br>型號  |  |
| Manufacturer / Your<br>Information Provider<br>製造商 / 您的<br>資料提供者 | EMSD / EMSD                                  |



可持續發展委員會  
Council for  
Sustainable Development

**(v) Phasing out energy-inefficient  
incandescent light bulbs**  
逐步淘汰能源效益較低的鎢絲燈泡



**(vi) Phasing out energy-inefficient electrical  
installations/appliances**  
逐步淘汰能源效益較低的電力裝置/產品







可持續發展委員會  
Council for  
Sustainable Development

**(iii) More use of IT management systems to facilitate adoption of energy-efficient practices**  
更多使用資訊科技管理系統以促進推行節能措施

**(iv) Promote adoption of energy-efficient appliances among the trades**  
推動業界採用具能源效益的電器

**(v) Encourage energy saving and reducing the peak demand for electricity through fine-tuning of tariff structure**

透過電費調整以進一步推動節能及減少高峰時段的用電需求



**Duration: 5 Aug – 4 Dec 2011**  
**期間: 2011年8月5日至12月4日**



**For more details, please visit**  
**詳情請瀏覽**  
[http:// www.susdev.org.hk/](http://www.susdev.org.hk/)

□ **Regional Forums 地區討論坊**

|                      |   |
|----------------------|---|
| 16. 08. 2011 (14:15) | Shatin Town Hall 沙田大會堂                                  |
| 30. 08. 2011 (18:45) | Leighton Hill Community Hall 禮頓山社區會堂                    |
| 24. 09. 2011 (09:15) | Mong Kok Community Hall 旺角社區會堂                          |
| 11. 10. 2011 (09:15) | Tsuen Wan Town Hall 荃灣大會堂                               |
| 11. 11. 2011 (14:15) | Sai Tso Wan Neighbourhood Community Centre<br>茜草灣鄰里社區中心 |

**Registration**  
**登記**

**2219-4763**  
[pecc@hku.hk](mailto:pecc@hku.hk)

□ **Mail 郵寄**

**Sustainable Development Division, Environment Bureau,**  
**M/Floor, Murray Building, Garden Road, Central, Hong Kong**  
**香港中環花園道美利大廈閣樓環境局可持續發展科**

□ **E-mail 電郵**      [comments@susdev.org.hk](mailto:comments@susdev.org.hk)

□ **Fax 傳真**          **3150 8168**



# Carbon Manager

## 碳足跡經理



可持續發展委員會  
Council for  
Sustainable Development

- The user-friendly **Carbon Manager** can help the public to better understand their energy consumption patterns and carbon emission levels as well as assist them in implementing practical and effective energy reduction measures

Carbon Manager

Preparation Checklist

Have you prepared the following information for carbon accounting?

- 1 Size of company (floor area & employee number)
- 2 Fuel types (Towngas, LPG, diesel, gasoline, kerosene, etc.) and consumption records
- 3 Paper consumption and recycle records
- 4 Electricity consumption records  
[CLP bill sample](#)  
[HEC bill sample](#)
- 5 Refrigerant consumption records
- 6 Fresh water consumption records  
[Water bill sample](#)

>Login +New User

E-mail

Password

[Forget Password](#)

Login

(We suggest you to prepare one year of records)

「**碳足跡經理**」是方便易用的網上碳排放計算系統，有助公眾了解自己的能源消耗情況和碳排放量，並採取務實有效的節能減排措施



可持續發展委員會  
Council for  
Sustainable Development



**Website 網址:** <http://carbon-manager.hkpc.org>

**Enquiry Email 查詢電郵:** [sdcm@hkpc.org](mailto:sdcm@hkpc.org)

**Hotline 熱線電話:** **2788 5658**



可持續發展委員會  
Council for  
Sustainable Development

**End 完**