

## 現有公共租住屋邨的節能措施 Energy Saving Measures in Existing Public Rental Housing Estates

Housing Panel Meeting  
2012年1月4日

### 公共屋邨能源消耗減少 Reduction of Energy Consumption in PRH

房委會已在公共屋邨採取了一系列節能措施，旨在減少每年總用電量。

The HA has been implementing a number of energy saving measures in the PRH estates, aiming to reduce the total annual electricity consumption.

公用地方平均每個租住單位攤分的年用電量  
**The Annual Energy Consumption of  
Communal Areas Per Rental Flat**

年度 Financial Year	度 kWh	減少率 (%) Reduction (%)	全部單位共節 省電費 (\$) Tariff Saving by All Rental Flats (\$)
2001/02	877	-	-
2010/11	751	14	79M

3

環保團體調查  
**Green Group's Survey**

	公用地方平均每個單位攤分的年用電量(度) Annual Energy Consumption of Communal Areas Per Flat (kWh)
Manhattan Hill, 曼克頓山	6,834
One Beacon Hill, 畢架山1號	6,725
The Pacifica, 宇晴軒	4,359
Aqua Marine, 碧海藍天	3,409
Central Park, 帝柏海灣	3,294
Island Harbourview, 維港灣	3,127
MOD 595	2,880
i-home	2,456
Park Island, 珀麗灣	2,226
Villa by the Park, 朗庭園	1,883
Tai Koo Shing, 太古城	1,590
Mei Foo Sun Chuen, 美孚新邨	918
<b>Housing Authority PRH 公共屋邨(2010/11)</b>	<b>751 (11% of Manhatttan Hill)</b>

4

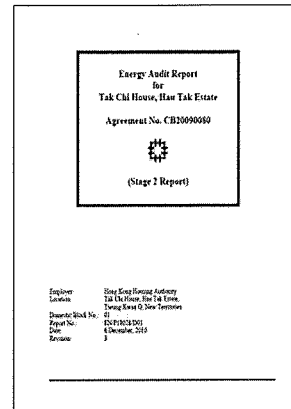
## 能源審核 Energy Audit

獨立顧問在2010及2011年分別為  
34幢典型公共屋邨大廈進行能源審  
核。

Energy Audits conducted by  
independent consultants for 34  
typical PRH blocks in 2010 & 2011  
have been commissioned.

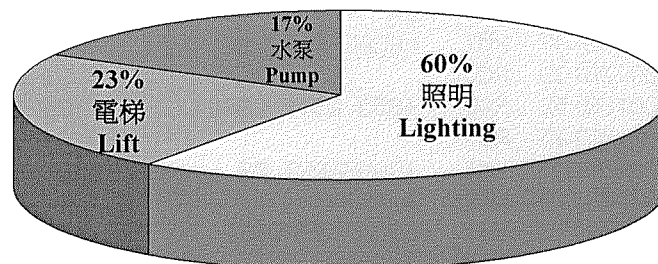
結果顯示整體能源表現令人滿意。

The result revealed that the overall  
energy performance is satisfactory.



5

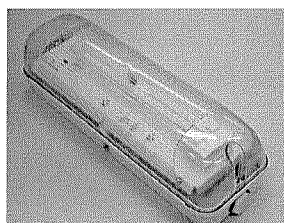
## 公共屋邨的公用部份的能源使用 Energy Consumption of Communal Areas of the PRH Blocks



6

所採取的節能措施  
**Energy Saving Measures Taken**

(a) 採用能源效益更高的燈源  
**Adoption of Higher Efficient Lamp Sources**



慳電光管 CF Tube



放電燈 Discharge Lamp

7

所採取的節能措施  
**Energy Saving Measures Taken**

(b) 改裝出口指示牌  
**Retrofitting of Exit Signs**

把現有出口指示牌的光管更換為效能更高的T5光管。

Retrofitting of existing Exit Signs with the higher efficiency T5 fluorescent tubes.

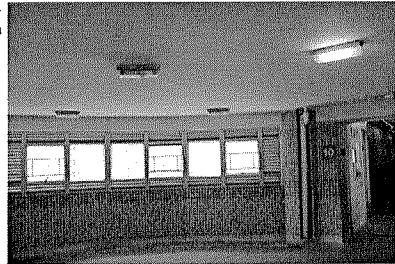


8

所採取的節能措施  
**Energy Saving Measures Taken**  
(c) 充分利用日光  
**Full Utilization of Daylight**

重組照明電路並調整照明系統  
開關時間掣。

Rearrangement of lighting  
circuits and optimization of  
operation period of artificial  
lighting.



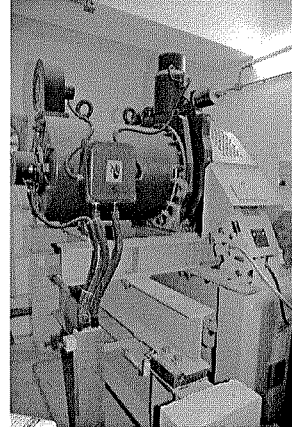
所採取的節能措施  
**Energy Saving Measures Taken**  
(d) 關掉非必要的燈具  
**Switch-off Excessive Fittings**



所採取的節能措施  
**Energy Saving Measures Taken**  
(e) 升降機現代化計劃  
**Lift Modernization Programme**

把舊型升降機更換為能源效益更高的升降機。

Replace older lifts with higher energy efficiency ones.

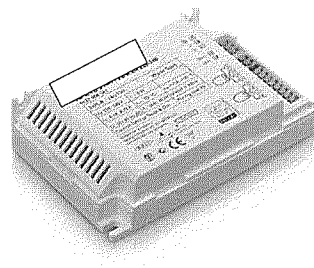


11

將採取的節能措施  
**Energy Saving Measures To Be Implemented**  
(a) 採用電子鎮流器  
**Adoption of Electronic Ballast**

把舊燈具更換為裝配有電子鎮流器的燈具，最多可節省能源20%。

Retrofitting old light fittings by new light fittings with electronic ballasts, saving could be up to 20%.



12

將採取的節能措施  
**Energy Saving Measures To Be Implemented**  
(b) 新建築物能源效益條例  
**New Building Energy Efficiency Ordinance (BEEO)**

所有新建築工程和改裝工程都會嚴格遵守《建築物能源效益條例》的規定。

Strictly follow the new BEEO in all new construction and retrofit projects.

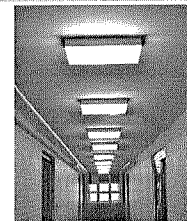
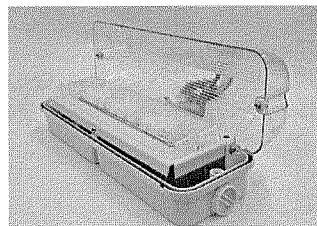


13

將採取的節能措施  
**Energy Saving Measures To Be Implemented**  
(c) 發光二極管燈具  
**LED Light Fitting**

發光二極管燈具極有潛力。已在三個公共屋邨試行採用，並正密切監察其效能。

LED light fitting has high potential. Trial is being conducted in three PRH estates, the performance is being closely monitored.



14

## 教育 Education

參與由機電工程署舉辦的「香港能源效益獎」。牛頭角邨及秀茂坪邨均奪得銅獎，而石蔭邨及天恆邨則榮獲優異獎。

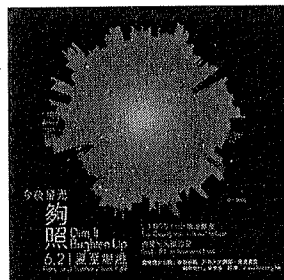
Participated in the "Hong Kong Energy Efficiency Awards" organized by the EMSD. Ngau Tau Kok and Sau Mau Ping Estates won the Bronze Awards while Shek Yam and Ting Heng Estate received the Merit Awards.



## 教育 Education

鼓勵公屋居民參與  
節能活動

Encourage  
tenants to  
participate in  
Energy Saving  
Programmes

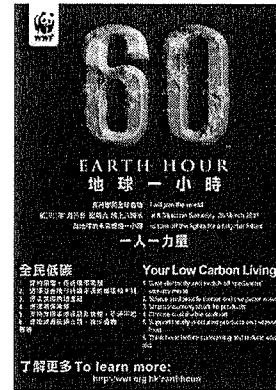




## 教育 Education

鼓勵公屋居民參與  
減碳活動

Encourage  
tenants to  
participate in  
Carbon Reduction  
Programmes



謝謝  
Thank You