

政府總部
運輸及房屋局
運輸科
香港添馬添美道2號
政府總部東翼



Transport and
Housing Bureau
Government Secretariat
Transport Branch
East Wing, Central Government Offices,
2 Tim Mei Avenue,
Tamar, Hong Kong

本局檔號 Our Ref. THB(T) CR 11/1016/99
來函檔號 Your Ref.
電話號碼 Tel. No. (852) 3509 8190
傳真號碼 Fax. No. (852) 2868 5261

16 July 2012

Council Business Division
Legislative Council Secretariat
Legislative Council Complex
1 Legislative Council Road
Central, Hong Kong
(Attn: Ms Joanne MAK)

Fax No. : 2869 6794

Dear Ms MAK,

**Legislative Council Panel on Transport
Subcommittee on Matters Relating to Railways**

**Supplementary Information on Members' Enquiries
at the Meeting on 22 May 2012**

At the meeting held on 22 May 2012 by the Subcommittee on Matters Relating to Railways under the Legislative Council Panel on Transport, Members enquired about the works of the West Island Line (WIL) and the waste recycling programme of the MTR Corporation Limited (MTRCL). The following supplementary information is provided for Members' perusal.

Design of the Station Entrances at First Street and Second Street for the Sai Ying Pun (SYP) Station of the WIL

To facilitate public access to the WIL, the MTRCL will provide entrances to SYP Station at the site of the Centre Street Cooked Food Centre (CSCFC), leading to First Street and Second Street. Since 2009, we and the MTRCL have met with the Central and Western District Council (CWDC) and the SYP Community Liaison Group on a number of occasions for introducing the design proposals for the station entrances and collection of views. In response to the concerns raised by the CWDC members and local community, the MTRCL

has revised and enhanced the design. The revised design proposal was presented to the local community on 8 December 2011. It was supported by most of the members of the CWDC when it was introduced to the CWDC meeting on 19 January 2012.

As a matter of fact, the revised design of the station entrances is a balanced approach taking into account various factors and constraints. It has been scrutinised and discussed by the relevant Government departments. Taking into account the concerns and aspiration of most of the residents, the MTRCL has thoroughly studied, from aspects such as technical and legal requirements and overall community benefits, various design options.

The MTRCL is embarking on the detailed design work for the revised proposal and the study on further topside landscaping for the station entrances. It will continue to liaise closely with the residents, CWDC and local community to meet the needs of the local community.

Works for the SYP Station of the WIL and the Centre Street Market (CSM)

To tie in with the construction works for the SYP Station entrances at First Street and Second Street, the CSCFC has been demolished with its site serving as a temporary works site for the WIL from 29 October 2010 to 2014. During the construction period, the CSM entrance leading to the above works site is closed for the sake of public safety while four other CSM entrances leading to First Street, Second Street and Centre Street remain open (see Enclosure I).

On 24 November 2010, the MTRCL and CWDC jointly held a residents' meeting on the construction works for the station entrances to brief the local residents and business operators on the various arrangements for the works, including the scale of site hoardings, mitigation measures, design of station entrances, temporary traffic management schemes, scope of works, and temporary closure of the CSM entrance leading to the works site. After the meeting, the MTRCL did not receive any enquiry from the business operators.

At the meeting of the SYP Community Liaison Group held on 19 April 2012, a CSM business operator expressed concern about the temporary closure of the CSM entrance and requested for its re-opening. The MTRCL arranged for a site inspection with the business operator on 24 April 2012. A meeting with the business operator and relevant Government departments was also held on 4 July 2012 to explain the need for the temporary closure and discuss possible mitigation measures.

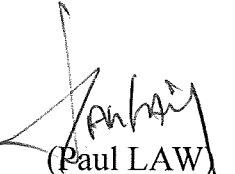
The MTRCL has displayed signage on the site hoardings to illustrate the location of the CSM (see Enclosure II). The Food and Environmental Hygiene Department (FEHD) has also displayed additional signs at appropriate locations within the CSM for public reference. The FEHD and MTRCL are studying the feasibility of other mitigation measures.

The Government and MTRCL will continue to closely monitor the WIL works and take various viable measures to reduce the impact of the works on the public and environment.

Recycling Facilities at MTR Stations

Across the MTR network, there are a total of 256 waste paper recycling bins and 133 three-colour recycling bins for the collection and recycling of waste paper, plastic bottles and aluminium cans. In 2011, the MTRCL collected about 830 000 kilograms of waste paper, 20 000 kilograms of plastic bottles and 2 000 kilograms of aluminium cans. All recyclable materials collected from MTR stations are processed by approved recycling contractors.

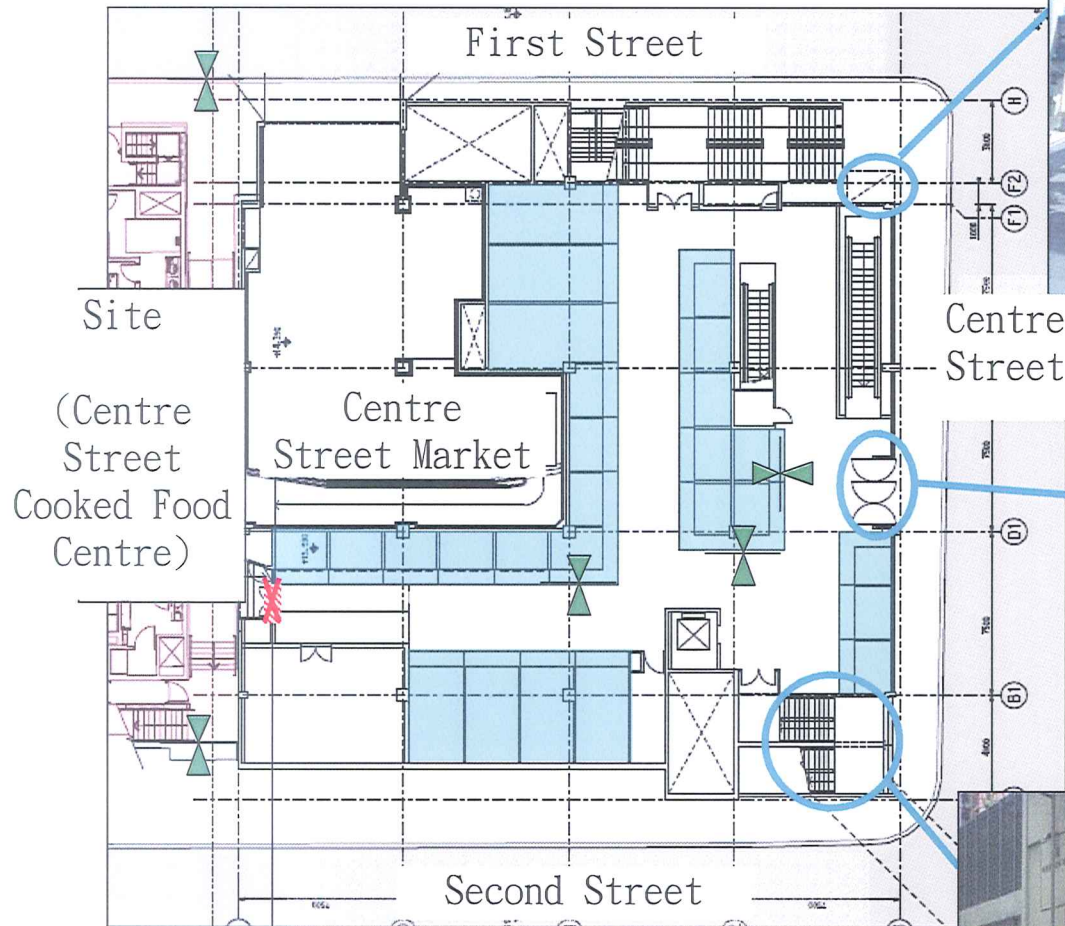
Yours sincerely,



(Paul LAW)

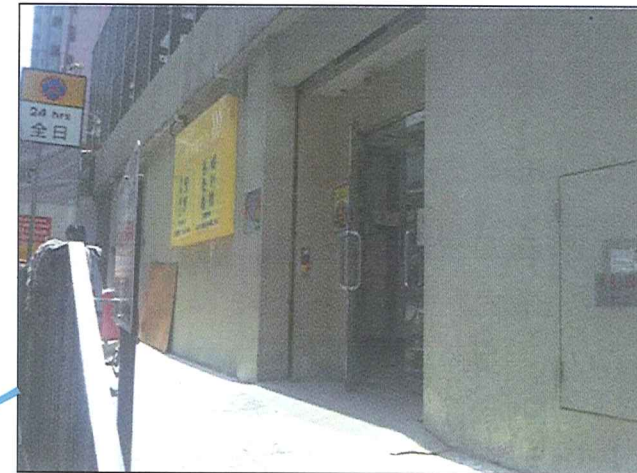
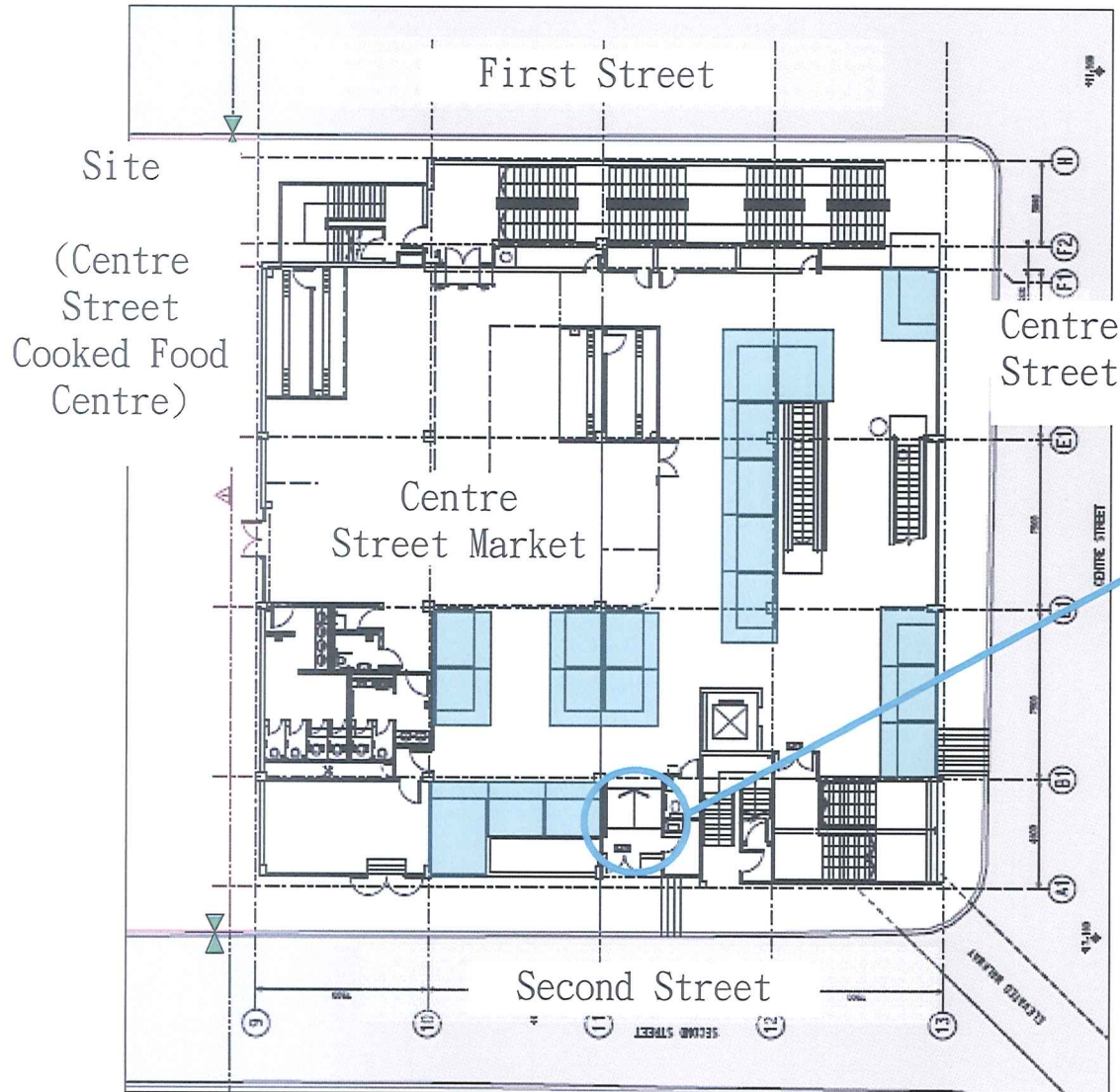
for Secretary for Transport and Housing





Floor Plan of Centre Street
Market (Ground Floor)



-  Stores
-  Entrance
-  New signs
-  Site

Floor Plan of Centre Street Market (1st Floor)



-  Stores
-  Entrance
-  New signs
-  Site



Signage on site hoardings illustrating the location of the Centre Street Market (1)



Signage on site hoardings illustrating the location of the Centre Street Market (2)