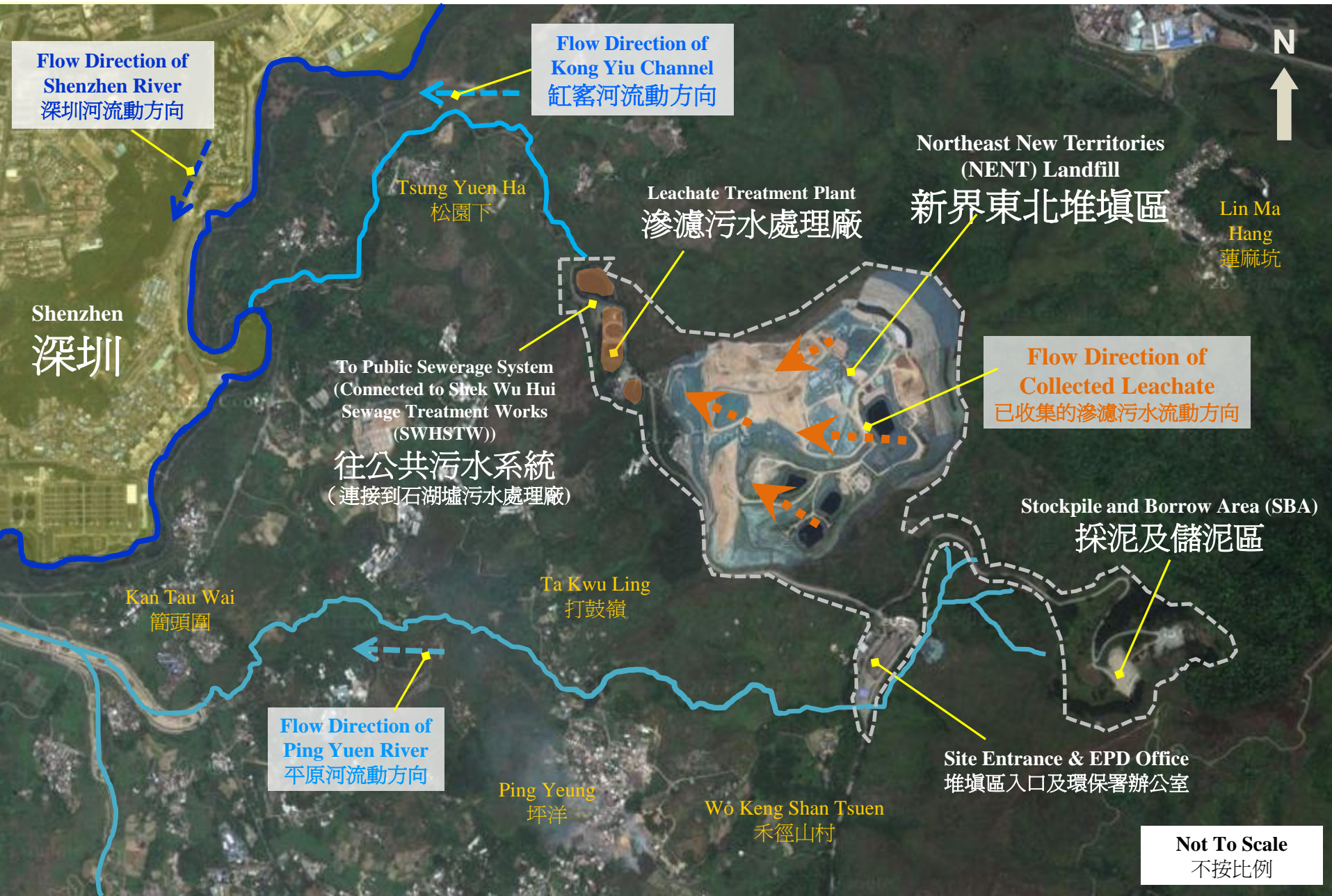


NENT Landfill and its Vicinity 新界東北堆填區及附近

CB(1)1812/12-13(01)



Incident of Leachate from NENT Landfill Due to Damaged Temporary Lagoon



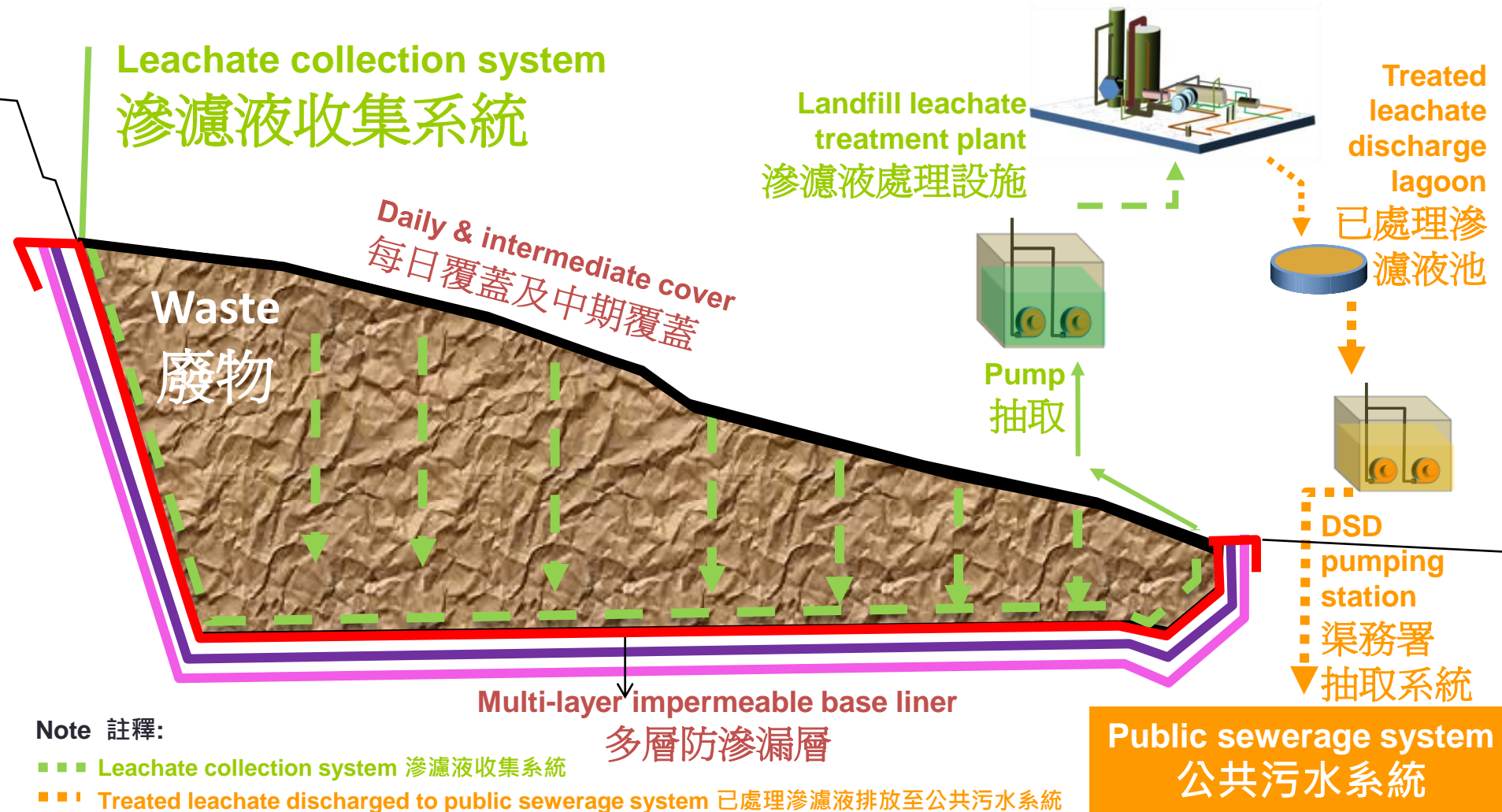
Damaged Temporary Lagoon (I)
已損壞的臨時儲存池 (I)



Leachate Collection & Management System (Normal Operation)



滲濾液收集及處理系統 (一般情況)





Environmental Monitoring Stations of NENT Landfill

環境監測點位置圖



113 monitoring stations in total
合共113個監測點

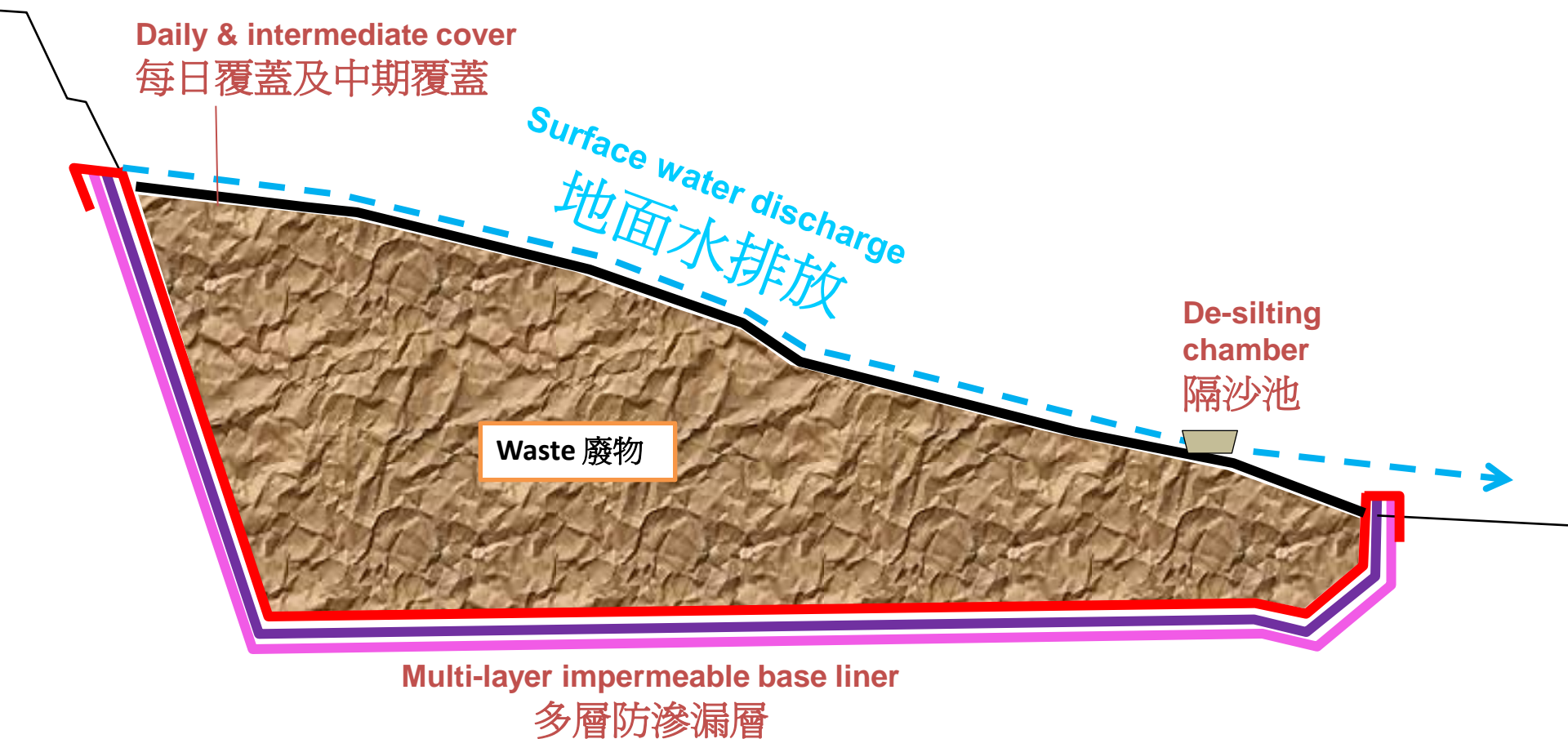
Legend 圖例

- Surface Water 地面水
- Groundwater & Landfill Gas
地下水及堆填氣體
- Treated Leachate 處理後滲濾水
- ▲ Dust 塵埃
- ◆ Noise 噪音
- VOC 揮發性有機化合物



Surface Water Management System (On Rainy Days)

地面水收集及處理系統 (雨季情況)



Most Areas of Landfill Already Covered by Impermeable Liners

堆填區的大部份面積已用不滲漏膠墊覆蓋



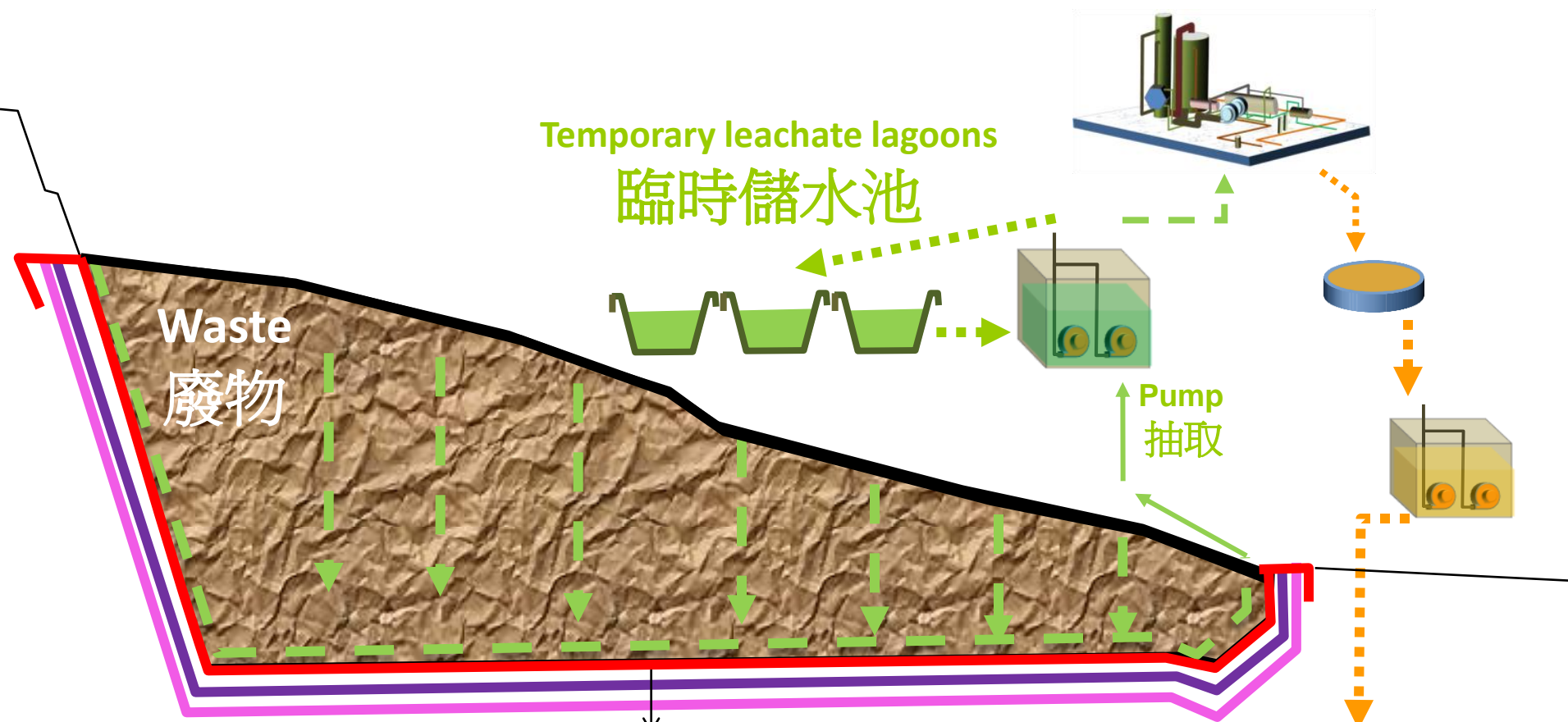
Daily & intermediate cover
每日覆蓋及中期覆蓋





Leachate Collection & Management System (During Wet Seasons)

滲濾液收集及處理系統 (雨季情況)



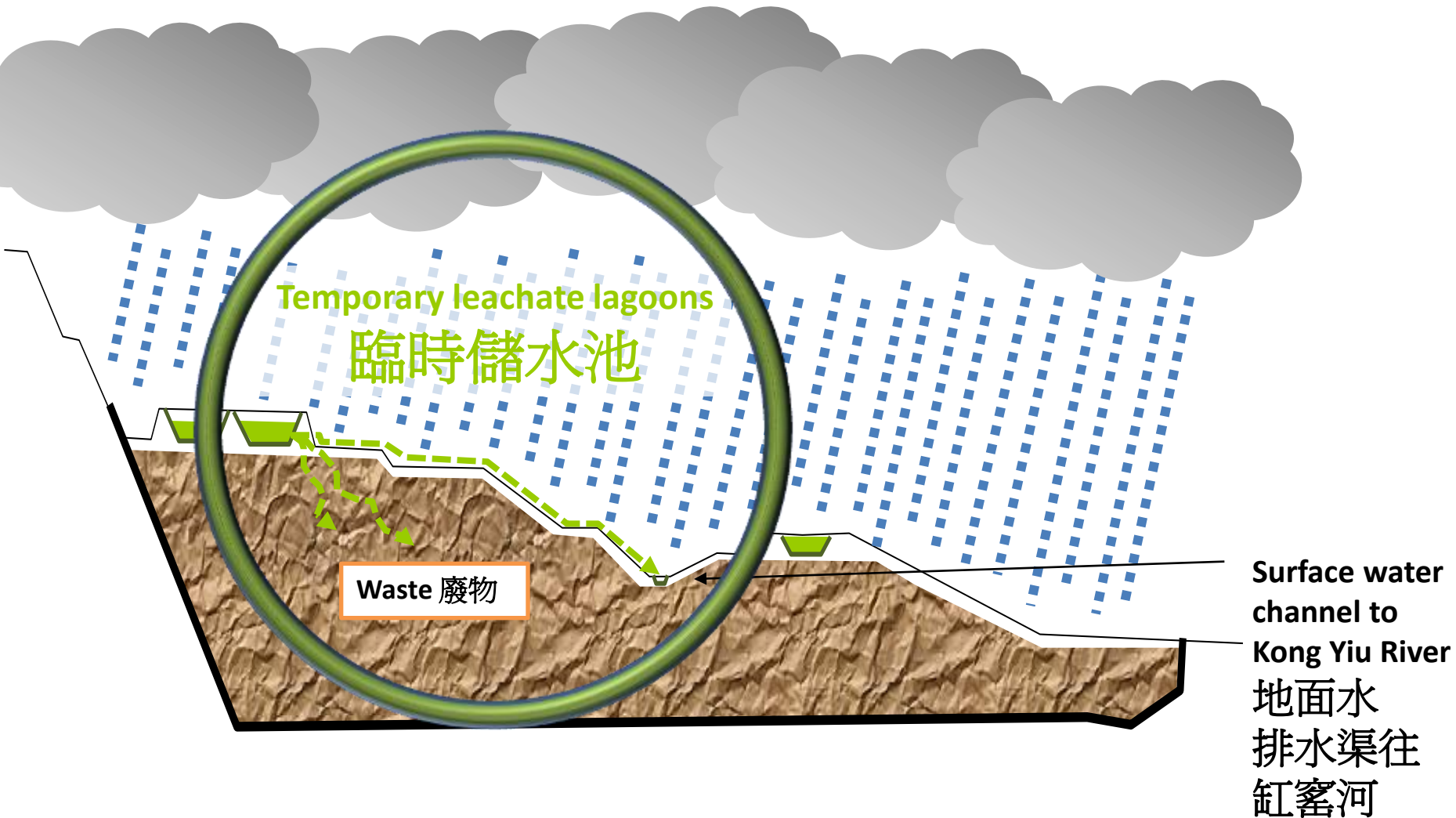
Note 註釋:

- ■ ■ Leachate collection system 滲濾液收集系統
- ■ ■ Treated leachate discharged to public sewerage system 已處理滲濾液排放至公共污水系統

Public sewerage system
公共污水系統

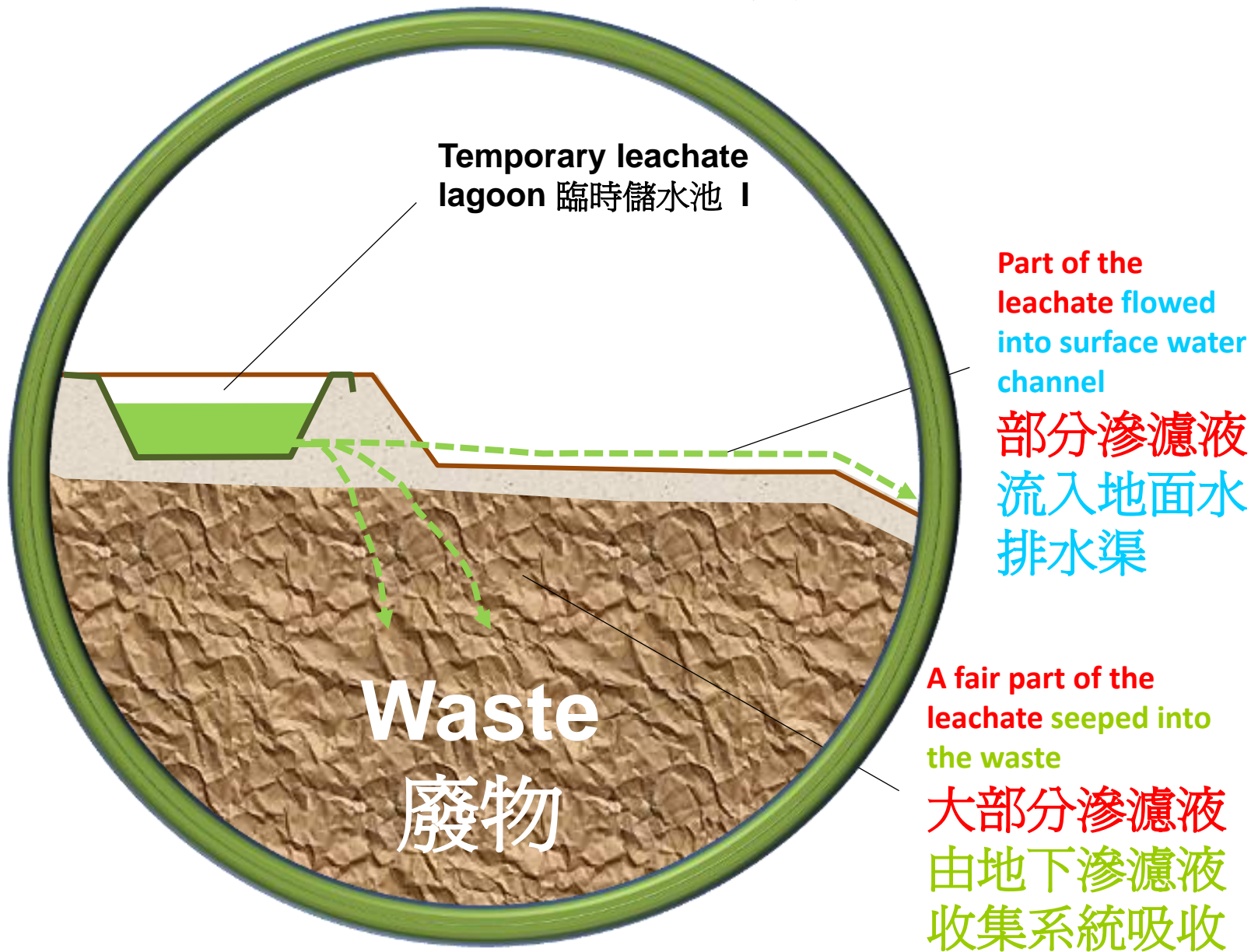


Leachate Leak Incident 滲濾液滲漏事件





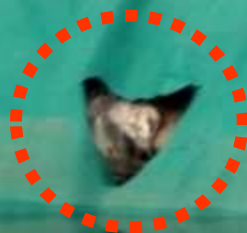
Leachate Leak Incident 滲濾液滲漏事件





Damaged Portion of Temporary Lagoon (I)

臨時儲存池(I) 的損壞部份



01 08 2013



Kong Yiu Channel

(A Man-made Concrete Channel Flowing into Shenzhen River)

缸窰河

(通往深圳河的人造石屎明渠)



Adjacent to landfill
在堆填區旁



Flowing downstream
流往下游





Damaged Temporary Lagoon (I)

(Resumed Operation after Repairing Completed on 31 August 2013)

損壞的臨時儲存池 (I)

(已於2013年8月31日完成復修後恢復運作)

Damaged Temporary Lagoon (I)

已損壞的臨時儲存池 (I)



Recommended Follow-up Actions

建議跟進行動

Short-term Measures 短期措施

- **Increase uptake of pre-treated leachate by the current sewerage system as far as possible**
利用現有的污水收集系統，盡量接收更多預先處理的滲濾污水
- **Increase tankering of pre-treated leachate direct to Shek Wu Hui STW**
增加水車將預先處理的滲濾污水直接運送往石湖墟污水處理廠

Mid-term Measures 中期措施

- **Install on-site treatment facility to treat wastewater generated from site activities and proposed new vehicle wash up to standard for direct discharge to Kong Yiu Channel**
安裝場內污水處理設施，處理從工地活動及洗車設施所產生的污水，達到符合直接排放至缸窰河的標準
- **Enhance overall leachate management (estimation of leachate generation and provision of adequate storage capacity etc.) and monitoring on site**
改善整體滲濾污水的管理 (估計滲濾污水的產生量及提供充足的儲存容量等)和現場監測工作
- **Expedite the upgrading of the sewerage network**
加快開展該區污水系統網絡的改善工程