

# 《2013年郊野公園(指定)(綜合)(修訂)令》

## Country Parks (Designation) (Consolidation) (Amendment) Order 2013

To incorporate Country Park Enclaves of Tai Long Sai Wan,  
Kam Shan and Yuen Tun into Country Parks

將大浪西灣、金山及圓墩的「不包括土地」

納入郊野公園範圍

**CRITERIA FOR INCORPORATING COUNTRY PARK ENCLAVES  
INTO COUNTRY PARKS**

將郊野公園「不包括的土地」納入相關郊野公園的準則

**Intrinsic criteria** 基本準則

- **Conservation value** 保育價值
- **Landscape and aesthetic value** 景觀及美觀價值
- **Recreation potential** 康樂發展潛力

**Demarcation criteria** 劃分準則

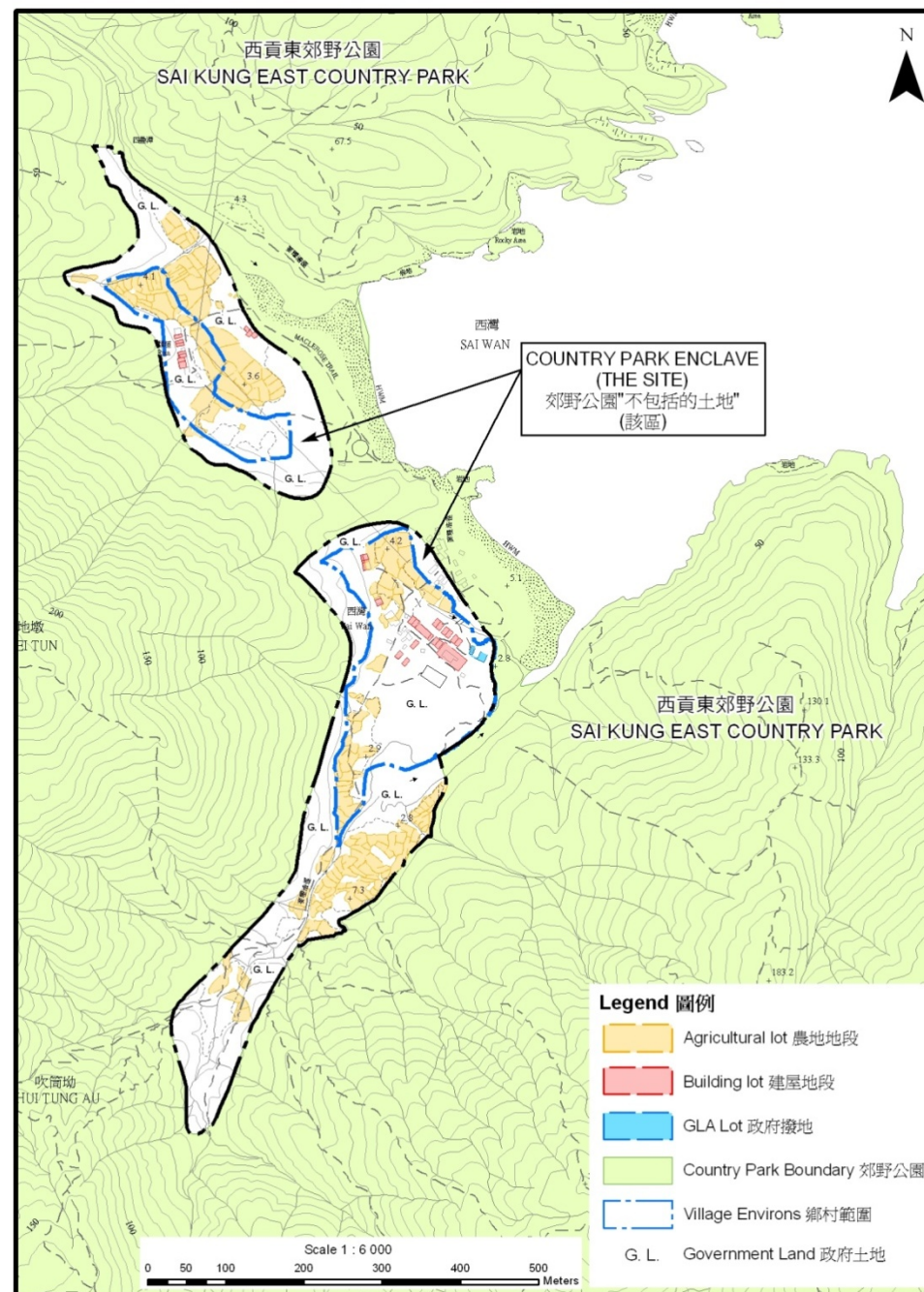
- **Size** 面積
- **Proximity to existing country parks** 接近現有郊野公園
- **Land status** 土地類別
- **Land use compatibility** 土地用途相配

# DISTRIBUTION OF PRIVATE LAND IN TAI LONG SAI WAN

## 大浪西灣私家土地分佈

Government Land: 12.53 hectares  
政府土地 : 12.53 公頃

Private land: 4.02 hectares  
私家土地 : 4.02 公頃



## RATIONALE OF INCORPORATING TAI LONG SAI WAN INTO THE SAI KUNG EAST COUNTRY PARK 將大浪西灣納入郊野東郊野公園的理由

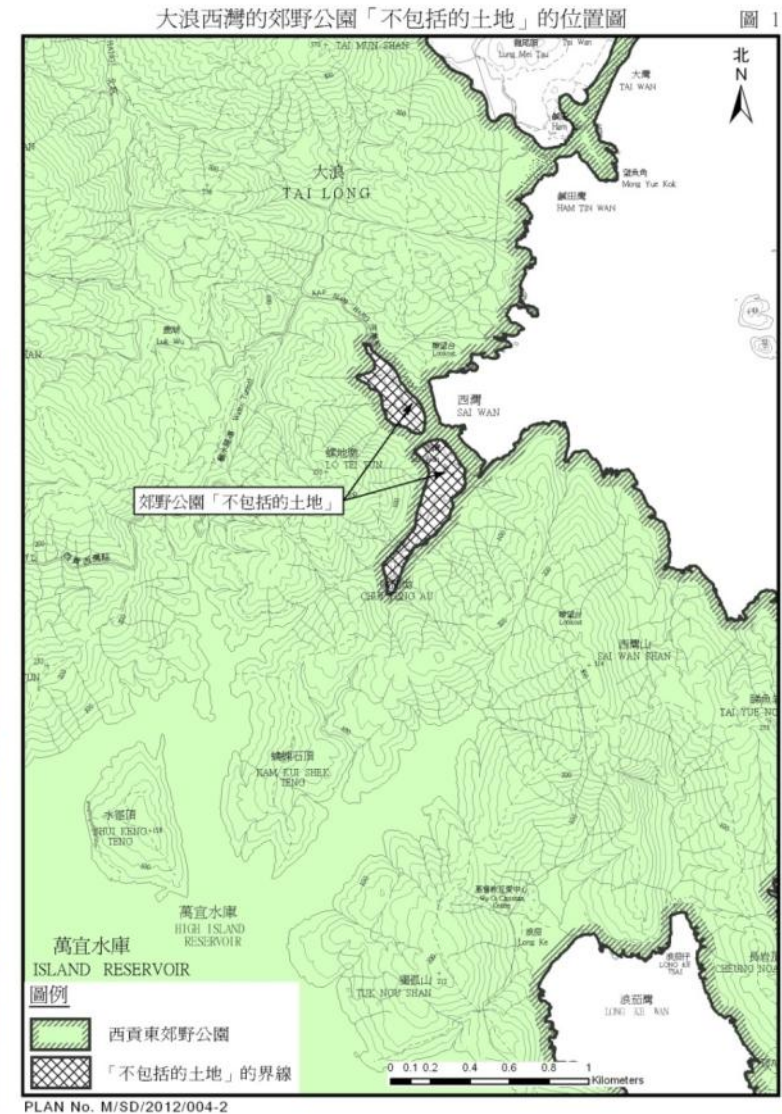
- The existing human settlement is not extensive, which blends in well with the country park environment.
- The natural beauty of the site has high recreation potential for developing into a venue for hiking, camping and nature appreciation.
- The inclusion would protect Sai Wan from developments incompatible with the Country Park.
- The Country and Marine Parks Authority would manage Sai Wan as country park areas through suitable measures, such as conducting patrol and law enforcement, collection of litter and vegetation management, etc.
- Suitable country parks facilities, such as information boards, warning signs, etc, will be provided.
- 現有居民分佈並不稠密，該區與郊野公園環境十分相配。
- 該區優美的天然景物具很高的康樂發展潛力包括遠足、露營、自然觀賞等。
- 納入郊野公園可保護西灣免受不協調的發展所影響。
- 西灣作郊野公園的一部分，郊野公園及海岸公園管理局將作出適當的管理，例如巡邏及執法、清理廢物、植物管理等。
- 提供適當的郊野公園設施，例如告示板、警告提示等。



# 大浪西灣不包括的土地 TAI LONG SAI WAN ENCLAVE

## 地點 Location

- Located at the East of Sai Kung Peninsula. Comprises southern and northern parts, total area 16.55 hectares.
- 位於西貢半島東端。分爲南北兩部分，總面積約16.55公頃。



# 自然環境及景觀

## NATURALNESS AND LANDSCAPE

- 與西貢東郊野公園的整體天然景觀及美態相輔相成，是周遭美麗景觀不可分割的部分
- Complements the overall landscape and naturalness, and forms an integral part of the SKECP
- 林地和紅樹林生境天然程度很高，並有大量獨特及有代表性的景物
- Embraced with natural woodland and mangroves, and other unique landscape components



# 自然環境及景觀

## NATURALNESS AND LANDSCAPE

北面部分 Northern Part



# 自然環境及景觀

## NATURALNESS AND LANDSCAPE

南面部分 **Southern Part**





# 自然環境及景觀

## NATURALNESS AND LANDSCAPE

- 於二〇〇六年獲選為香港十大勝景之首。
- Ranked first in “Hong Kong Best Ten Scenic Sites” in 2006.



**第1名 大浪西灣**

名次	編號／景點名稱	投票數
1	07. 大浪西灣 Tai Long Sai Wan	7561
2	88. 東平洲 Tung Ping Chau	6824
3	70. 濕地公園 Wetland Park	6598
4	03. 萬宜水庫 High Island Reservoir	6189
5	06. 浪茄灣 Long Ke Wan	6068
6	39. 山頂 The Peak	5933
7	60. 大澳 Tai O	5757
8	85. 印洲塘 Double Haven	5474
9	74. 梧桐寨 Ng Tung Chai	4794
10	58. 鳳凰山 Lantau Peak	4532

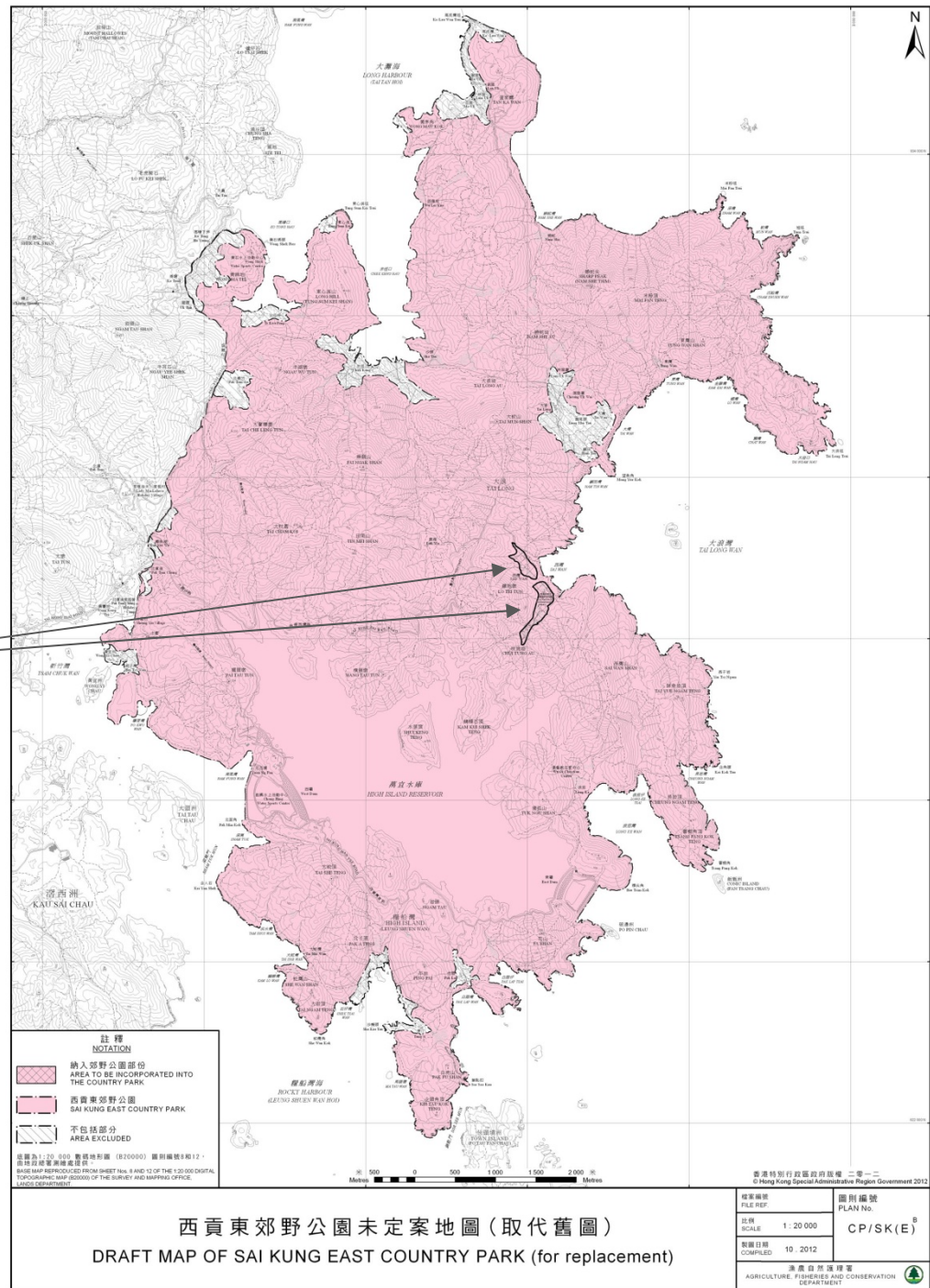


# 評估 ASSESSMENT

- 整體康樂潛力高，與郊野公園的宗旨極為相配。
- High recreation potential, and in line with country park objectives.
- 若納入郊野公園內，能保護其高景觀價值的環境，及提高享受大自然的樂趣。
- Incorporation into the Country Park could protect the environment with high landscape values, and to increase the enjoyment to the countryside.



# 西灣“不包括的土地” SAI WAN “ENCLAVE”



# The Other Two “Enclaves”

## 另外兩幅“不包括的土地”

### Kam Shan 金山

- 面積少於1公頃，位於接近金山頂峰的高地，屬政府土地。
- Less than 1 ha in area, located at the upland near the peak of Kam Shan. Government land only.

[詳情](#)



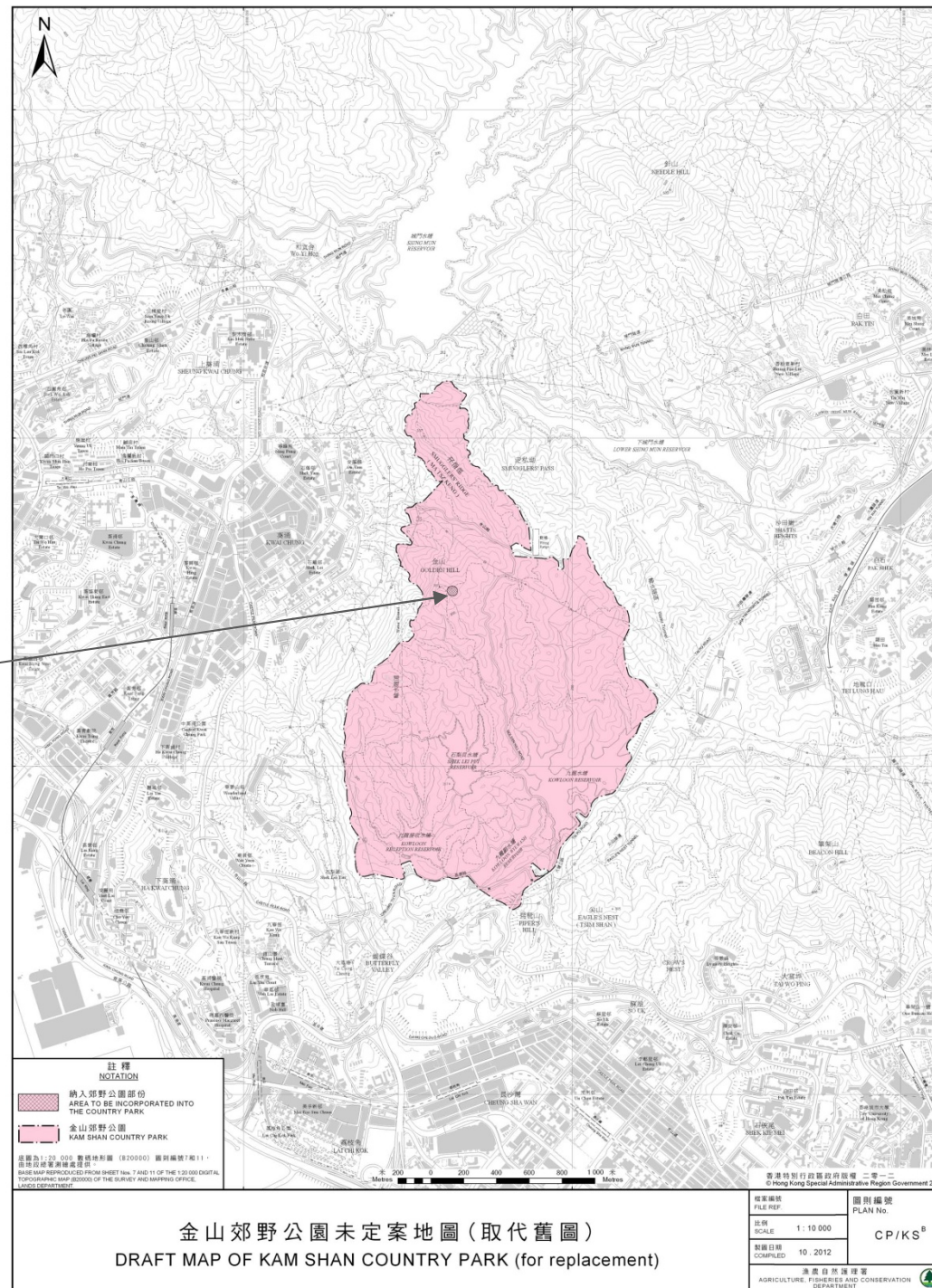
### Yuen Tun 圓墩

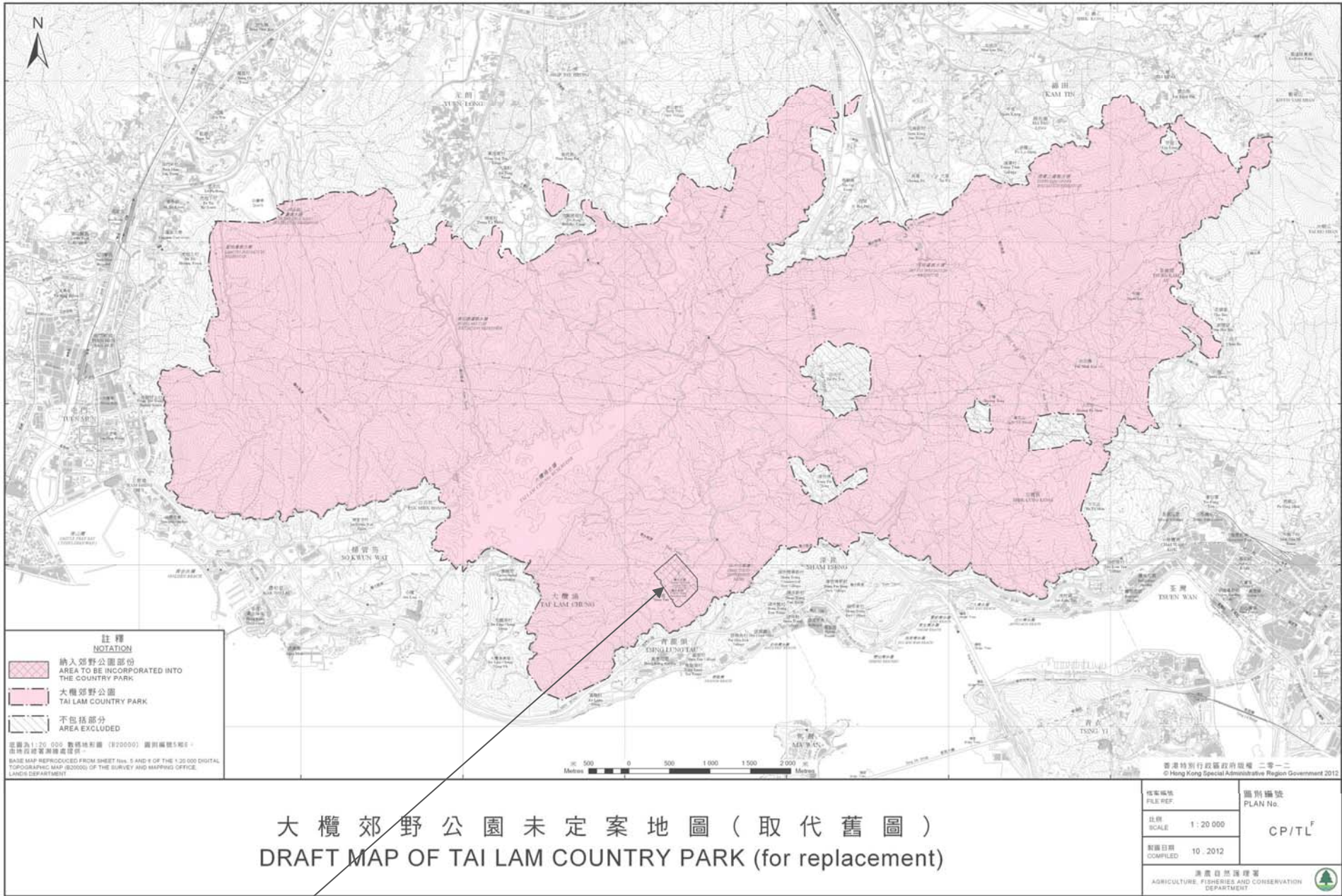
- 位於大欖郊野公園南部。面積約20公頃，全屬政府土地。
- Located at the south of the TLCP. About 20 ha in area, Government land only.

[詳情](#)



Kam Shan "Enclave"  
金山“不包括的土地”





Yuen Tun "Enclave"  
圓墩"不包括的土地"

謝謝

Thank You