



## 工務計劃項目第768CL號 – 中部水域人工島策略性研究 PWP Item No. 768CL – Strategic Studies for Artificial Islands in the Central Waters

立法會發展事務委員會  
Legislative Council  
Panel on Development  
日期 Date : 7.4.2014



發展局  
Development Bureau

## 優化土地供應策略 Enhancing Land Supply Strategy 第一階段公眾參與 Stage 1 Public Engagement (諮詢期 Consultation Period: 11.2011 – 3.2012)

### 現有土地供應模式 Existing Land Supply Options:



- 回應人士普遍支持以「六管齊下」方式，包括維港以外填海，以優化土地供應。

There was broad support for a **six-pronged approach** for enhancing land supply, including **reclamation outside Victoria Harbour**.

# 優化土地供應策略 Enhancing Land Supply Strategy

## 第二階段公眾參與 Stage 2 Public Engagement

- 第二階段公眾參與於2013年3月至6月期間進行，就擬議的填海地點及人工島的**土地用途**，以及**未來研究時須注意的事項**諮詢公眾。

The Stage 2 PE was conducted from March to June 2013, to seek public views on the **possible land uses** for the proposed reclamation sites and artificial islands as well as the **areas of concern to be addressed in future technical studies**.

### 中部水域人工島的主要結果 Major results on Artificial Islands

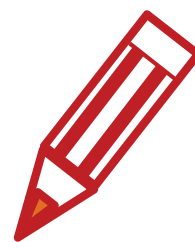
#### 土地用途 Land Use

- 住宅發展(特別是公共租住房屋)  
Residential development (in particular the public rental housing)
- 旅遊業相關設施  
Tourism related facilities
- 康樂或休憩設施  
Recreational or leisure facilities
- 公用設施  
Utilities
- 新市鎮  
New town
- 土地儲備  
Land reserve

#### 未來研究須注意事項

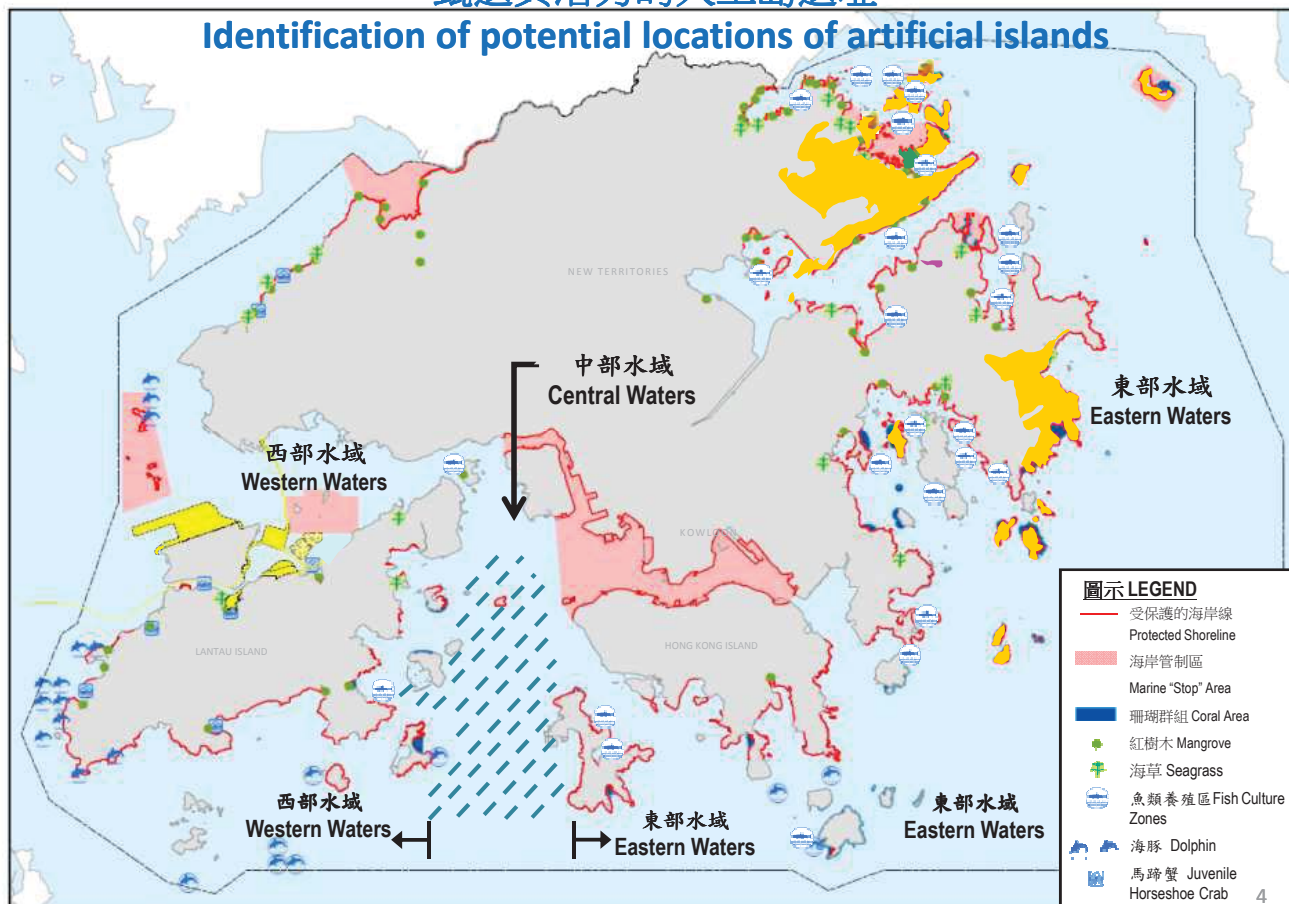
#### Issues to be covered in future studies

- 對海洋生態的影響  
Impact on marine ecology
- 生態保育  
Ecological conservation
- 交通運輸  
Transportation
- 成本效益  
Cost-effectiveness
- 加快供應土地的需要  
Need to expedite land supply



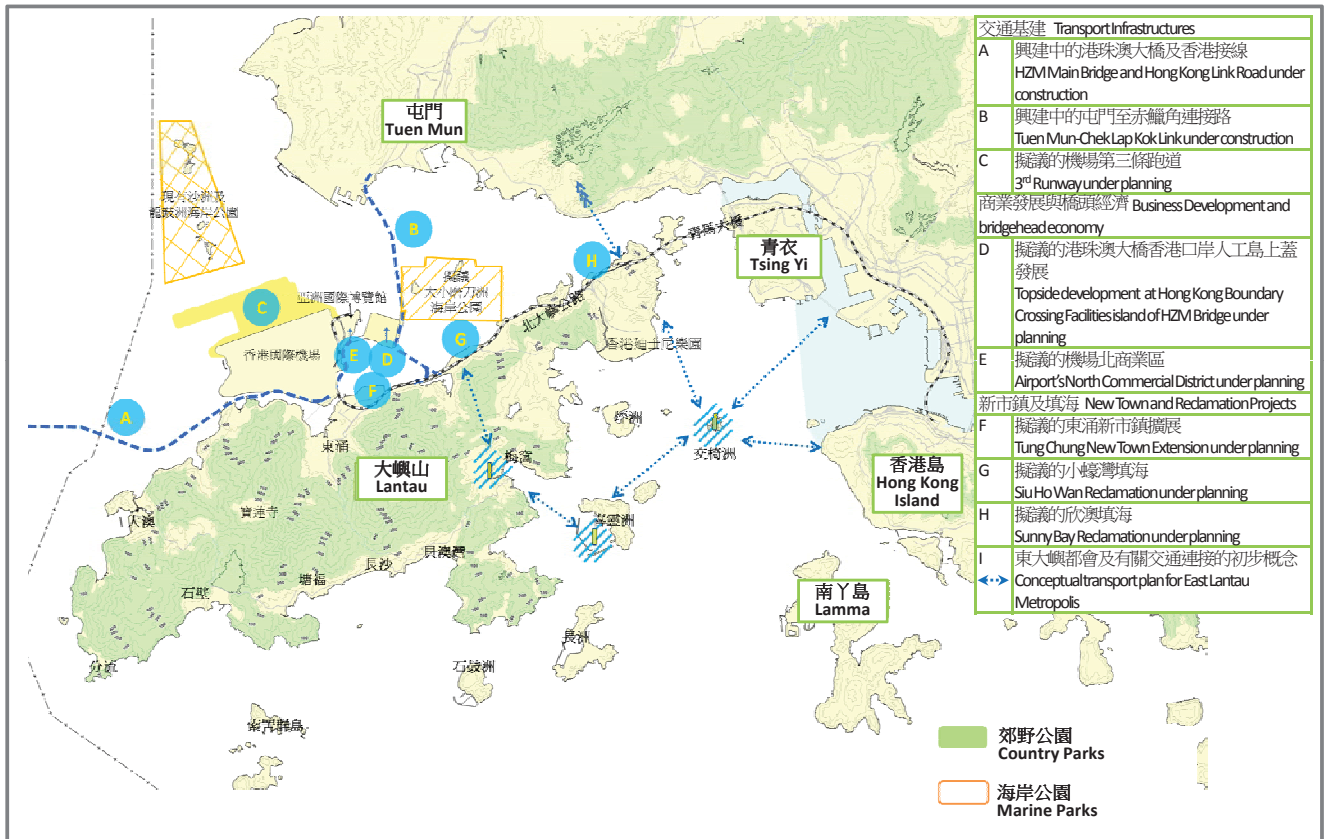
### 甄選具潛力的人工島選址

#### Identification of potential locations of artificial islands

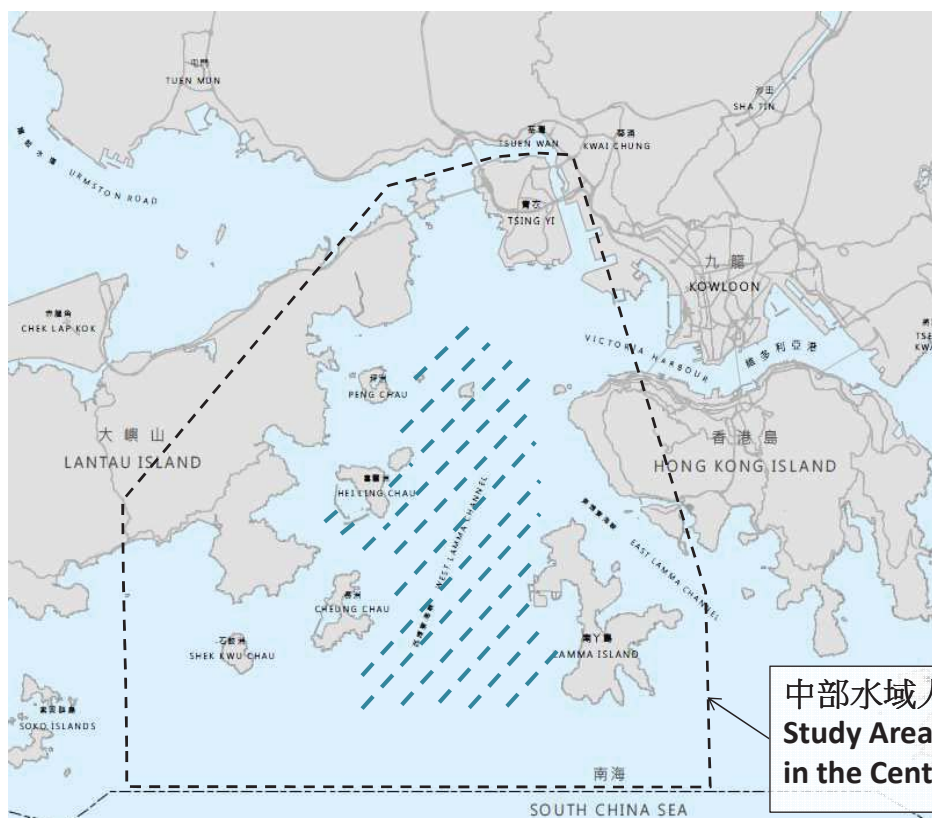


# 東大嶼都會發展概念圖

## Conceptual Plan of East Lantau Metropolis



## 研究範圍 Study Area



# 研究範疇 Study Scope

工程可行性及基礎設施研究，包括概括填海範圍及交通連接系統  
**Engineering feasibility and infrastructure study** including broad reclamation extent and transport links

人工島的初步土地用途規劃  
 Preliminary land use planning for Artificial Islands



港口運作及海上交通與安全研究  
 Port operations and marine traffic and safety study



策略性環境評估  
 Strategic Environmental Assessment



漁業影響評估  
 Fisheries Impact Assessment



諮詢相關持份者  
 Consultation exercises with relevant stakeholders

進行相關的工地勘測工程，包括監督工作  
 Carry out associated site investigation works including supervision

7

## 人工島的初步土地用途規劃 Preliminary Land Use Planning for Artificial Islands

- 配合施政報告開拓「東大嶼都會」  
 Dovetail with Policy Address to develop East Lantau Metropolis
- 探討其它土地用途的可行性和機遇  
 Explore feasibility and opportunity of other land uses
- 確定一個初步可行的發展概念圖，包括概括的發展方向、填海範圍、土地用途、交通基建及其他發展參數  
 Establish Initial Conceptual Development Plan, including broad development direction, reclamation extent, land uses, transport infrastructure and other planning parameters

可考慮的土地用途：  
 Possible land uses:



住宅用途  
Residential Use

核心商業區  
Core Business District



休閒及旅遊用途  
Recreational Use

教育用途  
Education Use

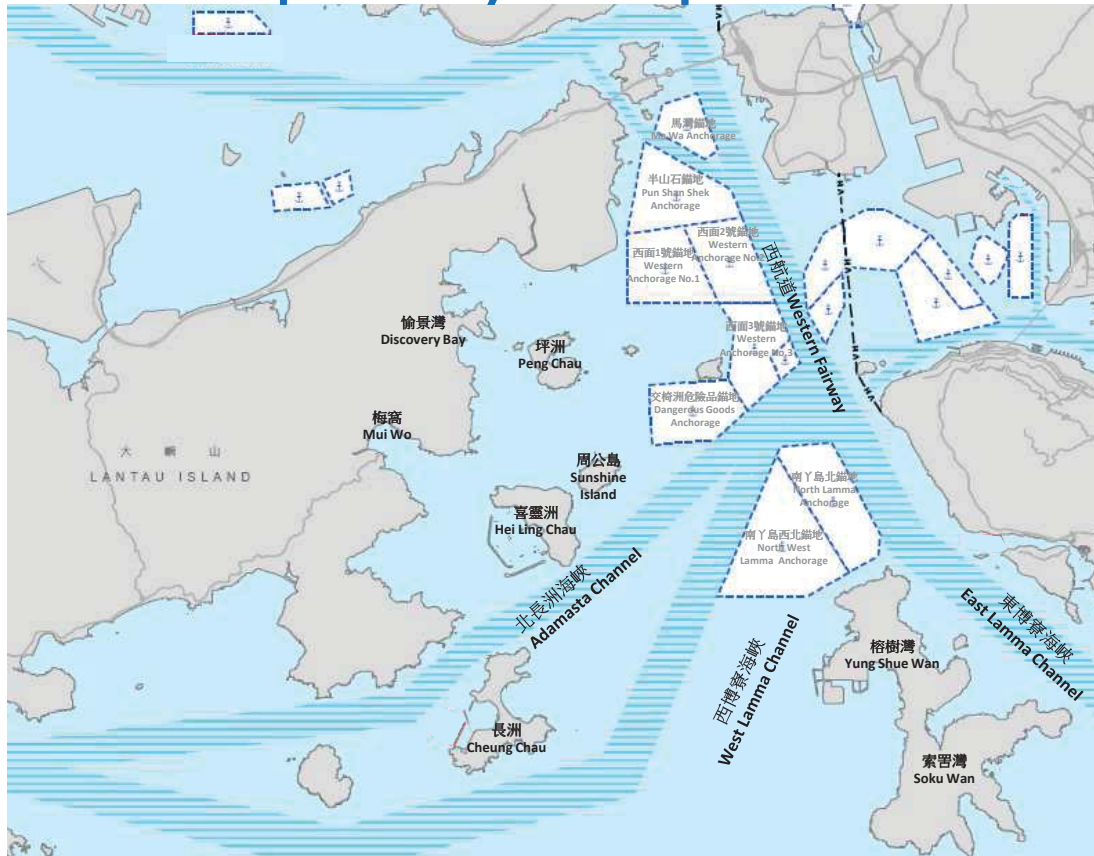


工業設施  
Industrial Facilities

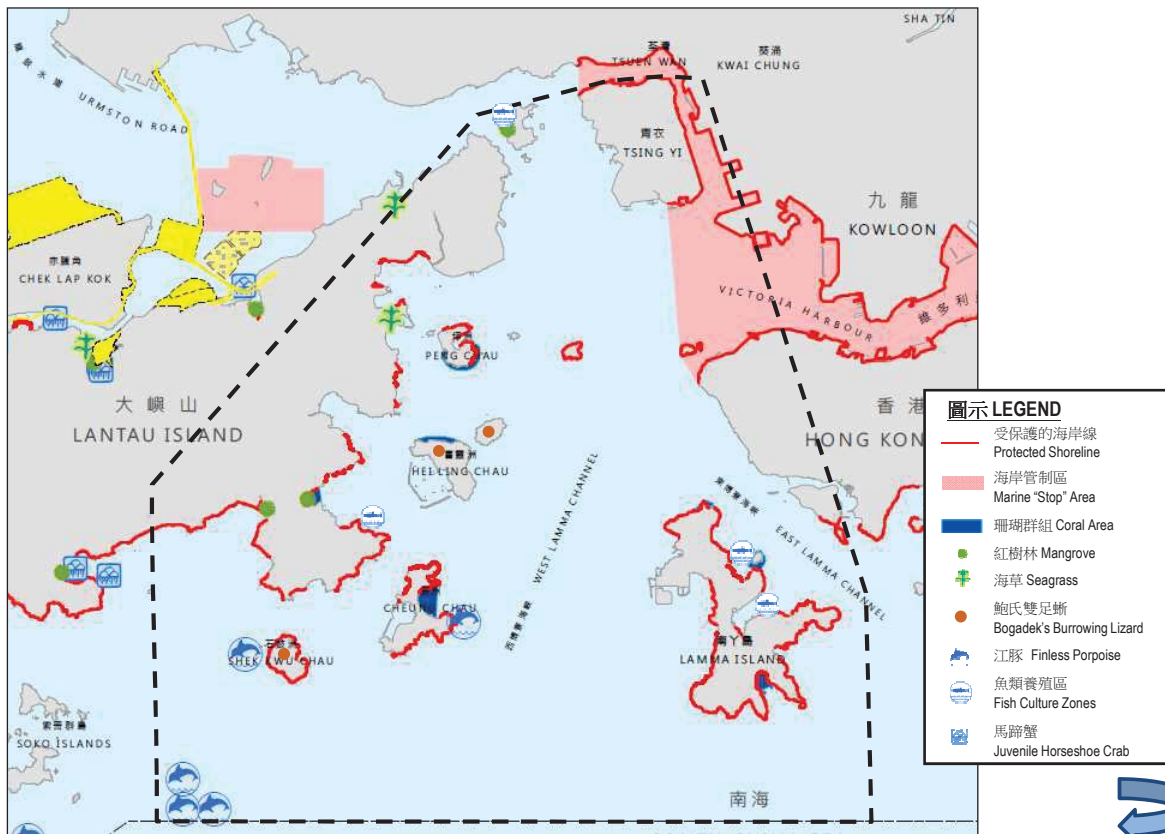
回收設施  
Recycling Facilities



# 港口運作帶來的限制 Constraints Imposed by Port Operations



# 中部水域的環境限制 Environmental Constraints in Central Waters



# 漁業影響評估 Fisheries Impact Assessment

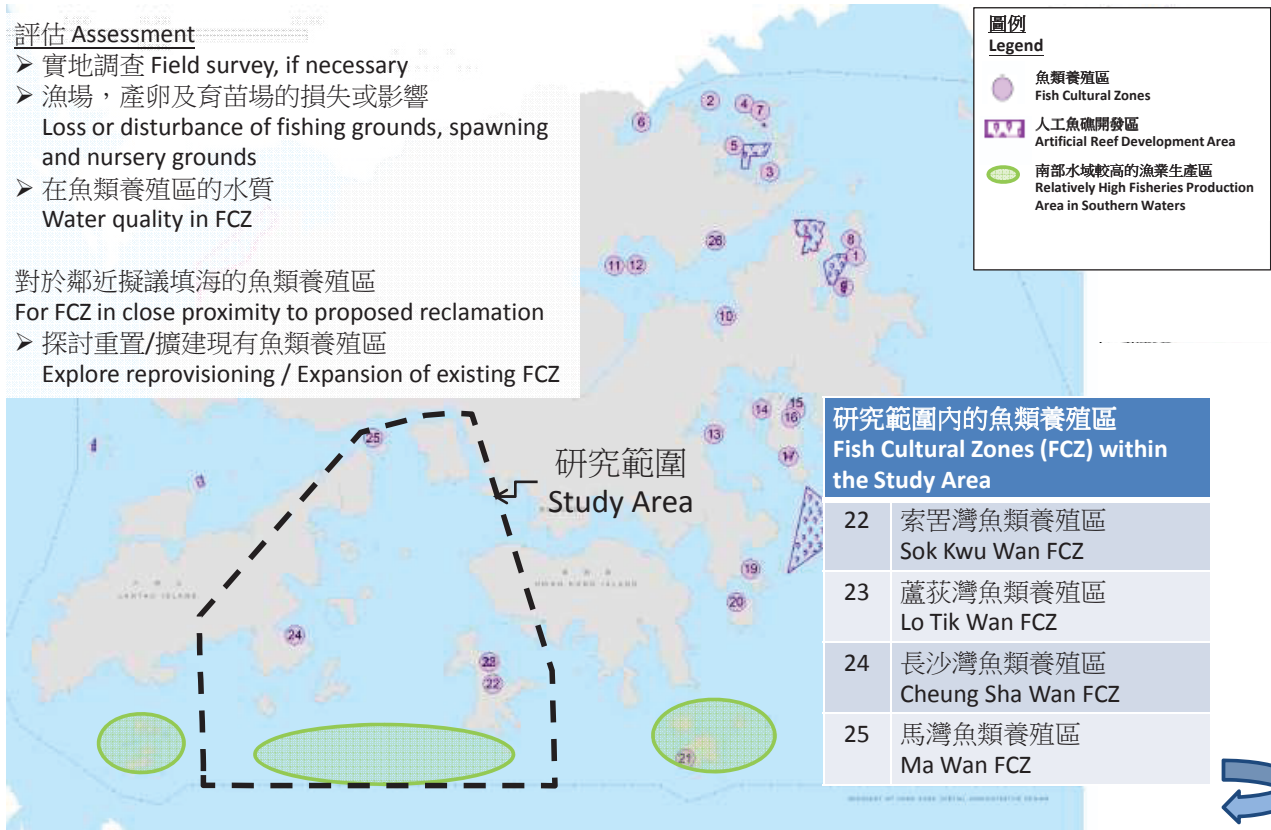
## 評估 Assessment

- 實地調查 Field survey, if necessary
- 漁場，產卵及育苗場的損失或影響  
Loss or disturbance of fishing grounds, spawning and nursery grounds
- 在魚類養殖區的水質  
Water quality in FCZ

對於鄰近擬議填海的魚類養殖區

For FCZ in close proximity to proposed reclamation

- 探討重置/擴建現有魚類養殖區  
Explore reprovisioning / Expansion of existing FCZ



## 未來路向 Way Forward

- 2014年5月向工務小組委員會申請把768CL號工程計劃提升為甲級  
To seek the Public Works Subcommittee's endorsement in May 2014 for upgrading **768CL** to Category A

- 2014年5月向財務委員會申請撥款  
Apply for funding from Finance Committee in May 2014

- 2014年下半年開展研究  
Commence the Study in the second half of 2014

- 2017年下半年完成研究  
Complete the Study in the second half of 2017

多謝

**Thank You**