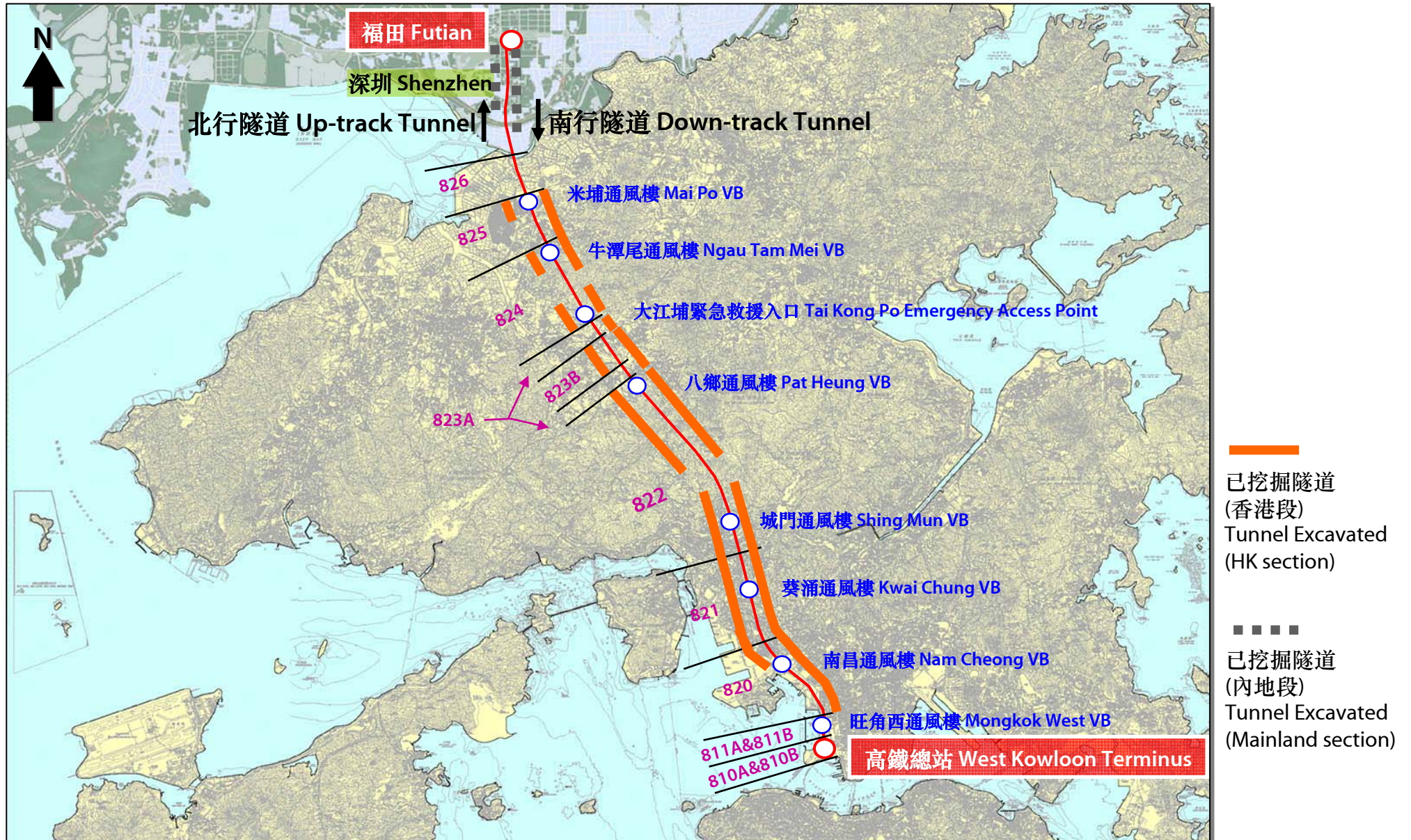




# 高鐵香港段進展 Express Rail Link Project Progress

22 / 11 / 2013

# 現時進度－隧道 Current Progress - Tunnels





# 深港連接段隧道工程

## Cross-boundary Tunnel Section



- 皇崗至米埔隧道，全長約3.8公里。其中深圳段約2.3公里，香港段約1.5公里。  
The tunnel length between Huanggang and Mai Po is around 3.8km, which Shenzhen section is around 2.3km and Hong Kong section is around 1.5km.
- 兩部隧道鑽挖機正由北向南施工，預計南行隧道的鑽挖機將於2013年11月底抵達深港分界，而北行隧道的鑽挖機將於2014年2月底抵達。  
Two TBMs are operating from north to south. It is expected that the TBM for down-track tunnel will arrive Shenzhen-Hong Kong boundary at end-Nov 2013, and the up-track TBM will arrive at end-Feb 2014.



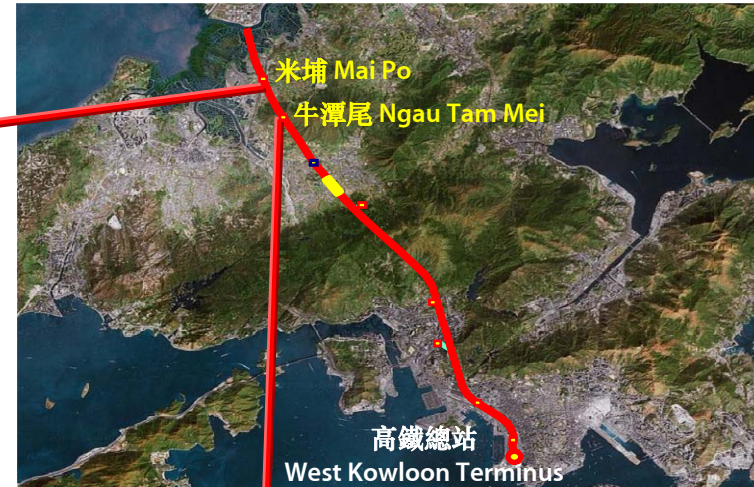
深圳段 - 皇崗豎井底工況  
Shenzhen section -  
Progress at Huanggang Shaft

# 新界段 — 米埔至牛潭尾隧道段

## NT Section - Mai Po to Ngau Tam Mei Tunnels



米埔通風樓之結構工程已大致完成  
Structural construction for Mai Po Ventilation Building is substantially completed



第一條南行隧道的鑽挖工程已於2013年7月完成  
TBM excavation for the 1st down-track tunnel completed in July 2013



# 新界段 – 牛潭尾至謝屋村隧道段

## NT Section - Ngau Tam Mei to Tse Uk Tsuen Tunnels



牛潭尾隧道工地  
Ngau Tam Mei tunnel works site



大江埔隧道工地  
Tai Kong Po works site



七星崗工地隧道工地  
Tsat Sing Kong tunnel works site

大江埔以北的南行及北行隧道鑽爆工程各完成超過1.5公里，並已於南行隧道進行內壁工程

Drill-and-blast tunnelling works at down-track and up-track tunnel advanced 1.5km from north of Tai Kong Po. Tunnel lining construction also started in the down-track tunnel section.

七星崗工地以北及石崗工地以南隧道鑽挖工程已完成約60%

Around 60% of TBM tunnelling works of the section of north of Tsat Sing Kong and south of Shek Kong completed.



# 新界段 – 石崗緊急救援處及列車停放處

## NT Section - Emergency Rescue Siding and Stabling Sidings



已完成所有挖掘工程，14座建築物已完成當中10座的結構工程  
All excavation completed. Structural works of 10 out of 14 buildings have been finished.



列車維修大樓內部  
Internal view of Running Maintenance Shed



# 新界段－謝屋村至石蔭隧道段（大帽山） NT Section - Tse Uk Tsuen to Shek Yam Tunnels (Tai Mo Shan)



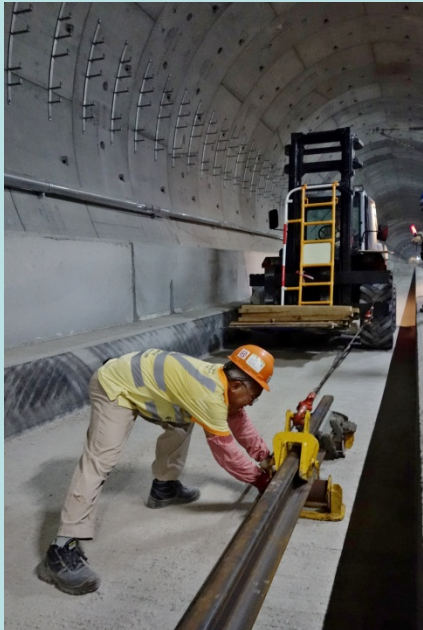
長約7.4公里的謝屋村至石蔭隧道（大帽山）的鑽爆工程已完成 6.4公里  
6.4km out of 7.4km of drill-and blast tunnelling work at the section of Tse Uk Village to Shek Yam (Tai Mo Shan) completed.

石蔭段隧道內的地台工程經已完成  
Invert Slab completed at Shek Yam Tunnel



# 新界段 – 石蔭至美荔道隧道段

## NT Section - Shek Yam to Mei Lai Road Tunnels



鋪設路軌  
Track laying



高架電纜懸臂  
OHL Cantilever

石蔭至美荔道隧道內壁工程現已完成  
Tunnel lining at Tse Uk Village to Shek Yum  
was completed



葵涌通風樓  
Kwai Chung Ventilation Building



# 市區段 — 美荔道至海庭道隧道段

## Urban Section - Mei Lai Road to Hoi Ting Road Tunnels



南昌以北的北行隧道於2013年11月貫通  
Breakthrough of up-track tunnel at the north of  
Nam Cheong in Nov 2013

南昌以南的南行隧道於2013年9月貫通  
Breakthrough of down-track tunnel at the south of  
Nam Cheong in September 2013



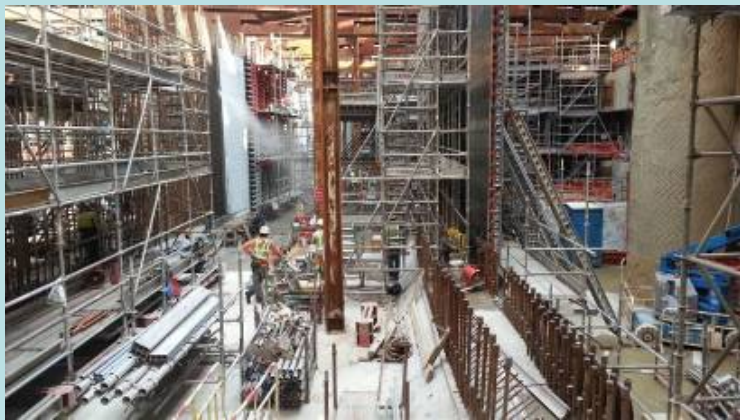


# 市區段 — 高鐵總站連接隧道

## Urban Section - West Kowloon Terminus Approach Tunnel



明挖隨填工程 Cut & Cover works



旺角西通風樓建造工程  
Mongkok West Ventilation  
Building Construction



# 現時進度 – 高鐵總站

## Current Progress – West Kowloon Terminus

- 車站主體的挖掘工程已完成超過73%  
Over 73% of the excavation work at main station was completed
- 最南端由上而下進行的主體結構工程已完成一半  
Half of the major structure construction (top-down) at south end is completed
- 北面車站部分正向上進行B4, B3及B2 層的主體結構工程  
Construction (bottom-up) of B4, B3 and B2 main structure at the northern part is in progress

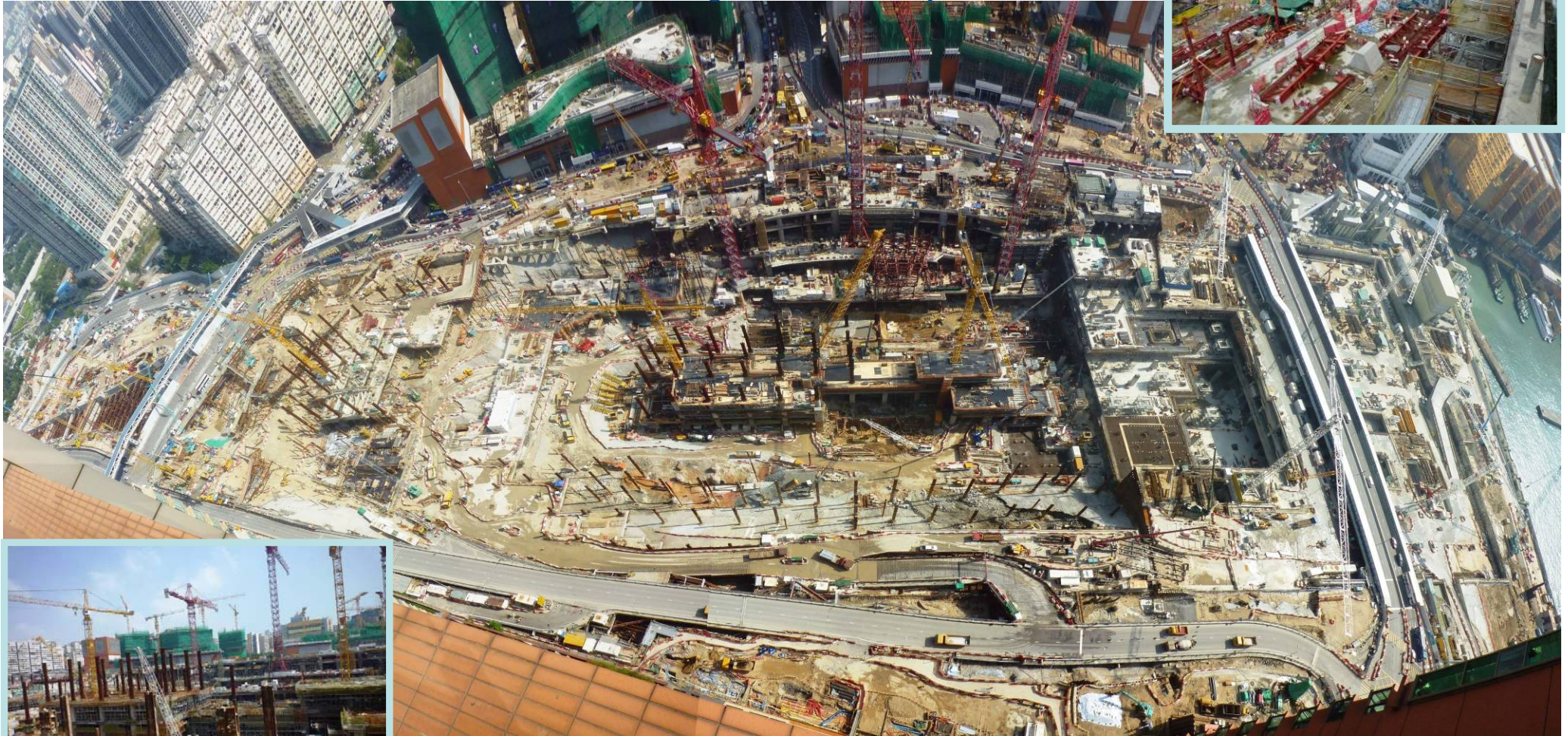


# 高鐵總站北（主要工地）

## West Kowloon Terminus North (Core Area)

安裝主柱臨時支撐架

Mega Column Temp Tower Erection



由下而上建造總站主體

Main Station Bottom-up Construction



# 高鐵總站南 West Kowloon Terminus South



建造地下B4層  
Construction of B4 slab



車站南端後勤範圍  
South-end Back of House Area



安裝風槽及電纜管道  
Ductwork / Cable  
containment Installation



# 現時進度 — 機電工程

## Current Progress – E&M Works

- 已完成所有合約的詳細設計  
Detailed design for all contracts has been completed
- 正在進行設備製造及廠內測試  
Equipment manufacturing and Factory Acceptance Tests (FATs) are in progress
- 屋宇設備、路軌、高空電纜及供電系統的設備等經已運抵工地及正安裝中  
Equipment for Building Services, Trackwork, Overhead Line, Power Supply System etc. have been delivered to site for installation
- 首列高鐵列車已完成組裝，正於國內進行軌道測試，預計於2014年4月運抵香港，並將會進行嚴格驗收及綜合測試  
The 1st XRL train has rolled off production line and started for track testing in Mainland. It will go through strict commissioning process and integrated testing after being delivered to Hong Kong in April 2014

# 機電工程 — 設備製造 / 廠內測試

## E&M Works - Equipment Manufacturing / Factory Acceptance Tests



與信號系統進行道岔功能測試  
Turnout Functional Test with Signalling System



2米 X 10米客戶資訊顯示屏  
2mx10m Passenger Information Display Board



主控系統 — 軟件確認平台  
Main Control System - Software Proofing Platform



隧道通風風機測試  
Factory Acceptance Test for Tunnel Ventilation Fan



# 機電工程 – 安裝

## E&M Works - Site Installation



於路軌進行閃光電焊  
Flash Butt Welding for Rails



豎立高架接觸網支柱  
Overhead Line Mast Erection



高鐵總站(南) – 屋宇設備安裝  
WKT (South) – Building Services Installation



石崗大樓之冷卻水塔  
Cooling Tower at Shek Kong Main Building

# 高鐵列車

## Rolling Stocks

- 已完成製造第一輛八卡列車，共提供579個座位  
Production of first train set (8-car) completed, providing 579 seats
- 已完成廠內靜態及動態測試  
Factory static and dynamic commissioning test conducted
- 高鐵列車測試將於2013年11月在國內進行  
High speed test in the Mainland to commence in Nov 2013
- 第一輛列車將於2014年4月運抵香港工地  
Delivery of first train set to Hong Kong site in Apr 2014



高鐵列車  
High Speed Rail Train





簡報完畢  
End of Presentation