

**THE ACCOUNTS OF THE  
LOTTERIES FUND  
2012 - 13**

# Lotteries Fund

---

## CONTENTS

	Page
Introduction	3
Report of the Director of Audit	4
Statement of Assets and Liabilities	6
Statement of Receipts and Payments	7
Notes to the Financial Statements	8
Schedule 1 - Statement of Approved Grants	11
Charts - Analysis of Revenue by Value and by Percentage for the years ended 31 March 2009 to 2013	56
Mark Six Lottery - Allocation of Gross Proceeds for the years ended 31 March 2009 to 2013	57

This page is intentionally left blank.

# Lotteries Fund

## INTRODUCTION

### Purpose

The Lotteries Fund was established to finance social welfare services by grants, loans and advances.

### Legislation

2. The Fund was established by a Resolution of the Legislative Council on 30 June 1965. After the enactment of the Public Finance Ordinance (Cap. 2) on 1 April 1983, the Fund is deemed to have been established under section 29(3) of that Ordinance.

### The Accounts

3. The Statement of Assets and Liabilities as at 31 March 2013 and the Statement of Receipts and Payments for the year ended 31 March 2013 were signed on 15 August 2013 and transmitted to the Director of Audit for auditing in accordance with section 7 of the Government Lotteries Ordinance (Cap. 334). These statements together with the Report of the Director of Audit are included in this Report.

4. Revenue for 2012-13 totalled HK\$1,780 million, including lottery proceeds (HK\$1,172 million), investment income (HK\$530 million), net proceeds from auctions of vehicle registration marks (HK\$77 million) and donations (HK\$1 million).

5. Expenditure for 2012-13 amounted to HK\$881 million. The Fund has paid a total of HK\$18,163 million since its establishment.

6. There was a surplus in the year of HK\$899 million which increased the total Fund balance to HK\$10,228 million.

7. The details of grants are shown in the Statement of Approved Grants at Schedule 1.

**Mrs Lesley Y C WONG**

Director of Accounting Services

8 November 2013

# Lotteries Fund

## REPORT OF THE DIRECTOR OF AUDIT



### **Independent Audit Report To the President of the Legislative Council**

I certify that I have examined and audited the financial statements of the Lotteries Fund set out on pages 6 to 10, which comprise the statement of assets and liabilities as at 31 March 2013, and the statement of receipts and payments for the year then ended, and a summary of significant accounting policies and other explanatory information.

### **Director of Accounting Services' responsibility for the financial statements**

Under section 7(1) of the Government Lotteries Ordinance (Cap. 334), the Director of Accounting Services is responsible for the preparation of the statement of the accounts which includes a receipts and payments account and a statement of assets and liabilities. In accordance with section 16(1) of the Public Finance Ordinance (Cap. 2), the Director of Accounting Services is also responsible for the management of accounting operations and procedures, and for ensuring that all regulations, directions or instructions made or given under the Public Finance Ordinance relating thereto and in respect of the safe custody of public moneys and its accounting are complied with.

### **Auditor's responsibility**

My responsibility is to express an opinion on these financial statements based on my audit. I conducted my audit in accordance with section 7(1A) of the Government Lotteries Ordinance and the Audit Commission auditing standards. Those standards require that I comply with ethical requirements and plan and perform the audit to obtain reasonable assurance about whether the financial statements are free from material misstatement.

An audit involves performing procedures to obtain audit evidence about the amounts and disclosures in the financial statements. The procedures selected depend on the auditor's judgment, including the assessment of the risks of material misstatement of the financial statements, whether due to fraud or error. In making those risk assessments, the auditor considers internal control relevant to the entity's preparation of the financial statements in order to design audit procedures that are appropriate in the circumstances, but not for the purpose of expressing an opinion on the effectiveness of the entity's internal control. An audit also includes evaluating the appropriateness of accounting policies used by the Director of Accounting Services, as well as evaluating the overall presentation of the financial statements.

I believe that the audit evidence I have obtained is sufficient and appropriate to provide a basis for my audit opinion.

# Lotteries Fund

---

## Opinion

In my opinion, the financial statements of the Lotteries Fund for the year ended 31 March 2013 are prepared, in all material respects, in accordance with section 7(1) of the Government Lotteries Ordinance.

David Sun  
Director of Audit

28 October 2013

Audit Commission  
26th Floor  
Immigration Tower  
7 Gloucester Road  
Wanchai, Hong Kong

# Lotteries Fund

## STATEMENT OF ASSETS AND LIABILITIES AS AT 31 MARCH 2013

	Note	2013 HK\$'000	2012 HK\$'000
<b>Assets</b>			
Investments with the Exchange Fund	3	10,288,096	9,388,230
Cash and bank balances		1	-
		<b>10,288,097</b>	<b>9,388,230</b>
<b>Liabilities</b>			
Deposits	4	(59,821)	(58,714)
		<b>10,228,276</b>	<b>9,329,516</b>
<b>Representing:</b>			
<b>Fund Balance</b>			
Balance at beginning of year		9,329,516	8,428,368
Surplus for the year		898,760	901,148
Balance at end of year	5	<b>10,228,276</b>	<b>9,329,516</b>

Notes 1 to 8 form part of these financial statements.

**Mrs Lesley Y C WONG**  
Director of Accounting Services  
15 August 2013



# Lotteries Fund

## STATEMENT OF RECEIPTS AND PAYMENTS FOR THE YEAR ENDED 31 MARCH 2013

	Note	2013 HK\$'000	2012 HK\$'000
<b>Cash and bank balances at beginning of year</b>		-	2,413
Revenue	6	1,779,776	1,817,610
Expenditure	7	(881,016)	(916,462)
<b>Surplus for the year</b>		<b>898,760</b>	901,148
<b>Other cash movements</b>	8	<b>(898,759)</b>	(903,561)
<b>Cash and bank balances at end of year</b>		<b>1</b>	-

Notes 1 to 8 form part of these financial statements.

**Mrs Lesley Y C WONG**  
Director of Accounting Services  
15 August 2013





# Lotteries Fund

## NOTES TO THE FINANCIAL STATEMENTS

### 1. Purpose and Legislation

The Lotteries Fund finances social welfare services by grants, loans and advances. It was established with effect from 30 June 1965 by a Resolution (hereinafter referred to as the Resolution) passed by the Legislative Council on the same date and subsequently deemed to have been established under section 29(3) of the Public Finance Ordinance (Cap. 2). The financial statements of the Fund are prepared in accordance with section 7 of the Government Lotteries Ordinance (Cap. 334).

### 2. Accounting Policy

The accounts of the Lotteries Fund are kept on a cash basis. Transactions are recorded when moneys are received or paid. The Statement of Assets and Liabilities does not include fixed assets, loans, investments other than those made under paragraph 2 of the Resolution, and debtors and creditors other than those deposits referred to in the Notes below.

### 3. Investments with the Exchange Fund

(i) These are investments and deposits held under paragraph 2 of the Resolution:

	2013 HK\$'000	2012 HK\$'000
Investments (Note (ii) below)	10,287,996	9,388,130
Deposits	100	100
	<u>10,288,096</u>	<u>9,388,230</u>

(ii) The investments represent the cost of investments together with the investment income received in the year being reported. Effective from 1 April 2007, the investment income is calculated on the basis of the average annual investment return of the Exchange Fund's Investment Portfolio for the past six years or the average annual yield of three-year Exchange Fund Notes for the previous year subject to a minimum of zero percent, whichever is the higher. The investment income for the year ended 31 March 2013 was HK\$530 million (2012: HK\$514 million).

### 4. Deposits

These are moneys received from time to time from individuals or organisations for a variety of reasons and are in due course either repayable or transferable to revenue:

	2013 HK\$'000	2012 HK\$'000
Donations	56,304	56,276
Contract retention money	3,517	2,438
	<u>59,821</u>	<u>58,714</u>

### 5. Commitments

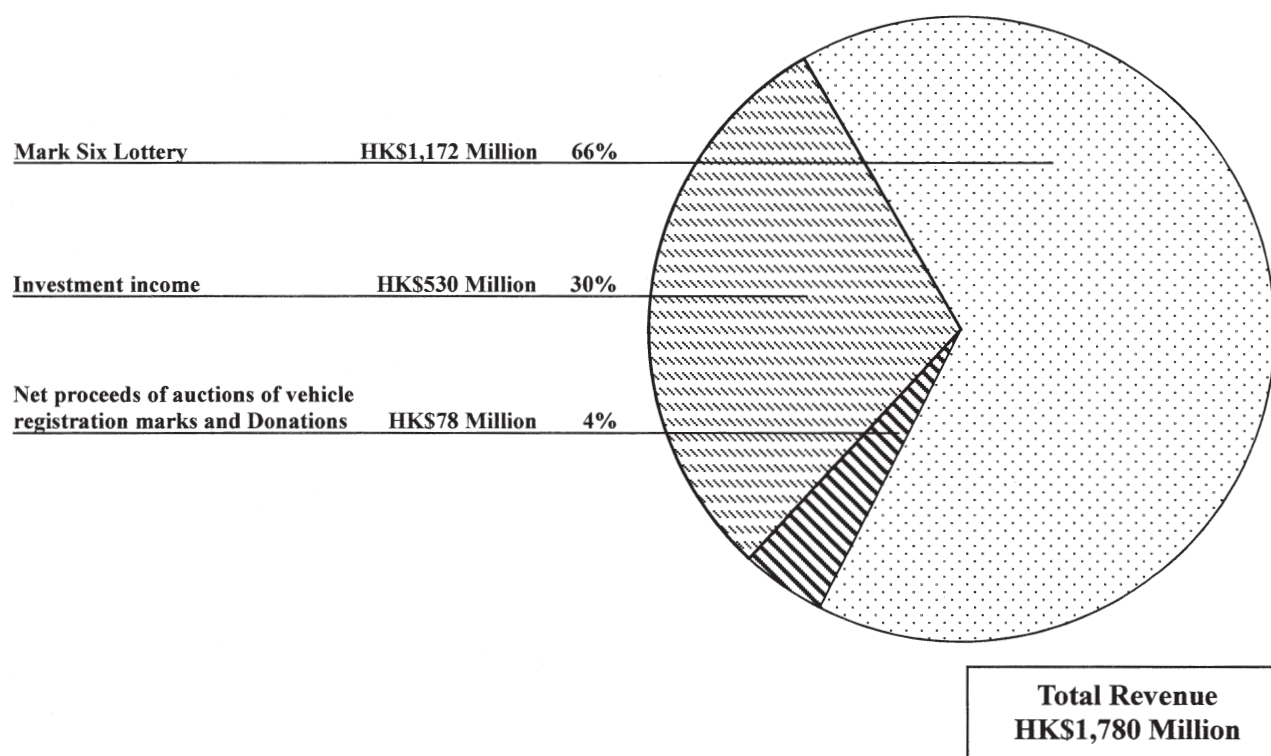
The approved grants that were unpaid as at 31 March 2013 amounted to HK\$3,659 million (2012: HK\$2,912 million).

# Lotteries Fund

## 6. Revenue

	2013		2012
	Original Estimate HK\$'000	<b>Actual</b> <b>HK\$'000</b>	Actual HK\$'000
Mark Six Lottery	1,396,054	<b>1,171,767</b>	1,208,147
Investment income			
Investments with the Exchange Fund	-	<b>529,994</b>	514,159
Others	-	-	1
	523,000	<b>529,994</b>	514,160
Net proceeds of auctions of vehicle registration marks	55,515	<b>76,551</b>	61,671
Donations	4,000	<b>1,464</b>	33,489
Refund of grants	-	-	143
	<b>1,978,569</b>	<b>1,779,776</b>	1,817,610

### Analysis of Revenue for the year ended 31 March 2013



# Lotteries Fund

## 7. Expenditure

	2013		2012
	Original Estimate HK\$'000	Actual HK\$'000	Actual HK\$'000
Grants	984,799	881,016	916,462
Additional commitments	232,684	-	-
	1,217,483	881,016	916,462

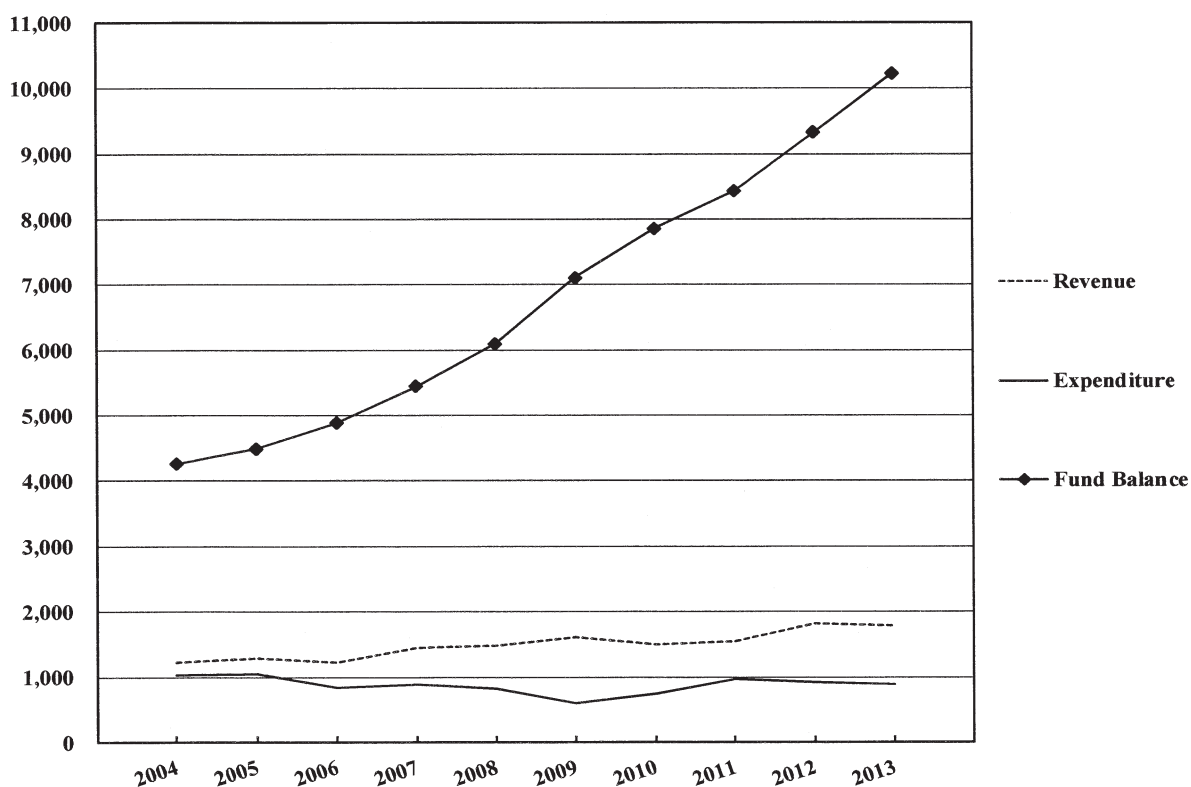
## 8. Other Cash Movements

These are cash movements arising from changes in other assets and liabilities:

	2013 HK\$'000	2012 HK\$'000
<b>Increase in Assets</b>		
Investments with the Exchange Fund	(899,866)	(868,196)
<b>Increase/(Reduction) in Liabilities</b>		
Deposits	1,107	(35,365)
	(898,759)	(903,561)

## Revenue, Expenditure and Fund Balance for the years ended 31 March 2004 to 2013

HK\$Million



# Lotteries Fund

## SCHEDULE 1

### STATEMENT OF APPROVED GRANTS

Descriptions	Approved Commitments	2012-13 Expenditure		Accumulated Expenditure to 31.3.2013	Unspent Balances (N=Not required)	
	HKS	Original Estimate HKS	Amended Estimate HKS	HKS	HKS	
<b>1. Aberdeen Kai Fong Welfare Association Social Service Centre</b>		<b>661,000</b>	<b>661,000</b>			
(1) Enhanced New Dawn Project from October 2007 to March 2010 in Hong Kong/Island including Tung Chung	1,845,000			—	1,069,616	775,384 N
(2) Fitting out additional premises of Jockey Club Wong Chi Keung District Elderly Community Centre at Wah Fu Estate, Aberdeen	1,721,700			—	1,721,610	90 N
(3) Fitting out additional premises of Wah Kwai Day Care Centre for the Elderly at Wah Fu (I) Estate, Aberdeen	525,100			—	439,994	85,106 N
(4) Renovating, furnishing and equipping Southern District Elderly Community Centre at 3 Shum Wan Road, Aberdeen	760,600			121,360	714,851	45,749
(5) Renovating Community Centre Building in Aberdeen	3,756,000			30,000	30,000	3,726,000
	8,608,400	661,000	661,000	151,360	3,976,071	4,632,329
<b>2. Against Child Abuse Limited</b>						
Fitting out for setting up a Child Protection Service Centre in North Point	1,478,000	—	—	—	—	1,478,000
<b>3. Agency for Volunteer Service</b>						
Fitting out, furnishing and equipping for reprovisioning Volunteer Training and Development Centre to Kwai Chung	3,066,000	519,000	2,532,000	2,174,675	2,261,062	804,938
<b>4. Alice Ho Miu Ling Nethersole Charity Foundation</b>		<b>766,000</b>	<b>766,000</b>			
(1) Renovating the Alice Ho Miu Ling Nethersole Nursing Home in Kowloon Bay	2,207,000			—	—	2,207,000
(2) Replacing the existing 11-seater private light bus with a new one for Alice Ho Miu Ling Nethersole Nursing Home in Kowloon Bay	701,000			—	626,229	74,771 N
	2,908,000	766,000	766,000	—	626,229	2,281,771
<b>5. Architectural Services Department</b>		<b>81,091,000</b>	<b>61,368,656</b>			
(1) Constructing and fitting out a social centre for the elderly in the Kowloon Canton Railway Corporation site at Mong Kok Station	1,458,000			—	—	1,458,000
(2) Fitting out the Kowloon Union Church Wai Ji Training Centre Sheltered Workshop in Yuen Long	5,359,000			—	3,368,694	1,990,306
(3) Fitting out the Kowloon Union Church Wai Ji Training Centre Long Ping Supported Hostel I	3,172,000			—	2,558,979	613,021
(4) Constructing and fitting out a social centre for the elderly in the private development project in Area 19, Fanling	1,457,000			—	1,388,000	69,000
(5) Constructing and fitting out a day nursery in the private development project at Area 19, Fanling	3,306,000			—	3,149,000	157,000
(6) Fitting out the Society of Homes for the Handicapped Hostel for the Moderately Mentally Handicapped at Cheung Hong Estate	5,400,000			—	4,549,266	850,734
(7) Fitting out a hostel for the severely mentally handicapped at Lok Fu Estate for the Mental Health Association of Hong Kong	8,892,000			—	4,168,342	4,723,658

# Lotteries Fund

## STATEMENT OF APPROVED GRANTS—continued

## SCHEDULE 1

Descriptions	Approved Commitments	2012-13 Expenditure		Accumulated Expenditure to 31.3.2013	Unspent Balances (N=Not required)
	HKS	Original Estimate HKS	Amended Estimate HKS	Actual HKS	HKS
(8) Fitting out Neighbourhood Advice-Action Council one home help centre at Long Ping Estate	2,128,000			—	1,781,654 346,346
(9) Fitting out Hong Kong Christian Service Special Child Care Centre at Wing A, Ground Floor, Cheung Chi House, Cheung Wah Estate, New Territories	6,171,000			—	3,118,755 3,052,245
(10) Fitting out the Hong Kong Children and Youth Service three small group homes at Chung On Estate, Ma On Shan	3,433,000			—	1,410,995 2,022,005
(11) Carrying out construction and fitting out works for a Social Centre for the Elderly in the Private Sector Participation Scheme at King Tung Street, Wong Tai Sin	6,895,000			—	3,978,821 2,916,179
(12) Fitting out the Spastics Association of Hong Kong Hostel and Day Activity Centre for severely mentally handicapped at Block 7, Fu Tung Estate	20,995,900			—	11,414,066 9,581,834
(13) Fitting out a day care centre and a hostel for severely mentally handicapped at Hing Wah Estate Redevelopment Phase I	17,492,800			—	10,733,103 6,759,697
(14) Fitting out the expanded premises of the Caritas - Hong Kong Lok Hing Special Child Care Centre at Tai Hing Estate	6,032,000			—	4,082,895 1,949,105
(15) Constructing and fitting out a day nursery at Queen Street Development	12,442,000			—	12,223,258 218,742 N
(16) Constructing and fitting out a hostel for moderately mentally handicapped at the Tsuen Wan Town Centre Redevelopment Project	15,062,000			—	8,698,000 6,364,000
(17) Constructing and fitting out a multi-service centre for the elderly at the Tsuen Wan Town Centre Redevelopment Project	13,589,000			—	8,444,000 5,145,000
(18) Constructing a care and attention home for the elderly in the private development at Hong Kong and Yaumatei Ferry Company Limited at Tai Kok Tsui	23,121,000			—	10,927,800 12,193,200
(19) Fitting out the residential care home for the elderly at Homantin South Phase 3	31,900,000			—	17,624,169 14,275,831 N
(20) Fitting out the supported hostel for mentally handicapped at Shun Tin Estate	4,083,200			—	2,382,860 1,700,340
(21) Construction cost of a residential care home for the elderly at KIL 11146 Hoi Fai Road, West Kowloon Reclamation	41,858,000			—	— 41,858,000
(22) Fitting out a training and activity centre for ex-mentally ill persons at Sha Kok Estate	5,800,000			—	4,157,306 1,642,694 N
(23) Constructing and fitting out the purpose-built rehabilitation complex at ex-staff quarters site of Castle Peak Hospital	334,168,000			—	271,810,539 62,357,461
(24) Constructing and fitting out the purpose-built rehabilitation complex at Lai King Headland	194,398,000			—	151,608,161 42,789,839 N
(25) Constructing a residential care home for the elderly at the junction of Hoi Wang Road and Hoi Ting Road, West Kowloon Reclamation	44,150,000			—	17,369,100 26,780,900
(26) Improving works on electrical and fire services installations of Hong Kong Christian Services - Shun Lee Hostel for the Elderly	3,828,000			—	2,864,738 963,262 N
(27) Fitting out a hostel for moderately mentally handicapped at Tin Chak Estate, Tin Shui Wai Area 105	7,540,000			—	6,384,106 1,155,894 N
(28) Fitting out a sheltered workshop at Tin Chak Estate, Tin Shui Wai Area 105	11,426,000			—	8,255,156 3,170,844 N
(29) Fitting out a family crisis support centre at Kwun Tong Road	16,700,000			—	13,414,462 3,285,538
(30) Refurbishing 15 ex-staff/ex-doctors quarter blocks of Castle Peak Hospital at Tuen Mun	30,830,000			—	28,293,823 2,536,177

# Lotteries Fund

## STATEMENT OF APPROVED GRANTS—continued

## SCHEDULE 1

Descriptions	Approved Commitments	2012-13 Expenditure		Accumulated Expenditure to 31.3.2013	Unspent Balances (N=Not required)	
	HKS	Original Estimate HKS	Amended Estimate HKS	Actual HKS	HKS	
(31) Fitting out the former Chuk Yuen Children's Reception Centre premises to reprovision 4 services units of Social Welfare Department	12,890,000			—	10,311,383	2,578,617
(32) Constructing an integrated children and youth services centre in a government public works project at Tseng Choi Street, Tuen Mun Area 10	28,000,000			—	25,000,000	3,000,000
(33) Constructing a residential care home for the elderly cum a day care unit at Cherry Street, Tai Kok Tsui under the Urban Renewal Authority Development Scheme	14,829,000			—	12,132,900	2,696,100
(34) Constructing a residential care home for the elderly cum a day care unit at the site between the First Street and Second Street, Sai Ying Pun under the Urban Renewal Authority Development Scheme	16,822,000			—	13,652,800	3,169,200
(35) Constructing a residential care home for the elderly cum a day care unit at site TW7, West Rail Tsuen Wan West Station under the Kowloon-Canton Railway Corporation Development Scheme	21,758,000			—	—	21,758,000
(36) Constructing a residential care home for the elderly in a government complex in Area 17, Tung Chung New Town	59,180,000			—	53,657,772	5,522,228 N
(37) Carrying out building repair and works in external areas of multi-purpose crisis intervention and support centre	5,555,000			—	5,401,934	153,066
(38) Construction cost of a residential care home for the elderly at Po On Road/Wai Wai Road, Sham Shui Po	18,283,000			—	—	18,283,000
(39) Construction cost of an integrated children and youth services centre in a proposed government complex at Mei Foo	25,800,000			10,000,000	10,000,000	15,800,000
(40) Designing and constructing an integrated community mental health support services centre and a long stay care home in Tin Shui Wai Area 109	156,800,000			20,331,000	126,331,000	30,469,000
(41) Constructing a residential care home for the elderly cum community support service centre at Lee Tung Street and McGregor Street, Wanchai under Urban Renewal Authority Development Scheme	36,630,000			—	—	36,630,000
(42) Constructing a district elderly community centre cum integrated home care services team and an integrated family service centre in a government complex in Fanling Area 44	76,900,000			—	—	76,900,000
(43) Construction costs of a 100-place residential care home for the elderly cum a 20-place day care unit, a neighbourhood elderly centre and an integrated children and youth services centre in Tai Wai Depot Site of the Ma On Shan Railway under the Kowloon Canton Railway Corporation Development Scheme	35,702,000			30,831,300	30,831,300	4,870,700
	1,392,235,900	81,091,000	61,368,656	61,162,300	907,479,137	484,756,763
<b>6. Asia Women's League Limited</b>		<b>1,678,000</b>	<b>1,752,000</b>			
(1) Constructing, furnishing and equipping a care and attention home cum social centre for the elderly in Kowloon Tong	30,882,200			—	28,380,753	2,501,447
(2) Upgrading the provision of hospital beds in Chan Kwun Tung Care and Attention Home for the Elderly	1,231,000			1,073,500	1,073,500	157,500 N
(3) Upgrading the provision of hospital beds in Ho Leung Kit Ting Care and Attention Home for the Elderly	778,000			678,000	678,000	100,000 N
(4) Upgrading the provision of hospital beds in Chan Kwun Tung Care and Attention Home for the Elderly	624,000			—	—	624,000
(5) Upgrading the provision of hospital beds in Ho Leung Kit Ting Care and Attention Home for the Elderly	520,000			—	—	520,000
	34,035,200	1,678,000	1,752,000	1,751,500	30,132,253	3,902,947
<b>7. Association Concerning Sexual Violence Against Women</b>						
Fitting out for reprovisioning the RainLily Crisis Centre	976,800	308,000	832,000	737,899	737,899	238,901

# Lotteries Fund

## STATEMENT OF APPROVED GRANTS—continued

## SCHEDULE 1

Descriptions	Approved Commitments	2012-13 Expenditure		Accumulated Expenditure to 31.3.2013	Unspent Balances (N=Not required)
	HKS	Original Estimate HKS	Amended Estimate HKS	Actual HKS	HKS
<b>8. Baptist Oi Kwan Social Service</b>		<b>2,380,000</b>	<b>2,380,000</b>		
(1) Renovating the Tsing Yi Neighbourhood Elderly Centre	1,155,000			—	667,359
(2) Renovating the Headquarters Building	1,793,200			—	1,242,207
(3) Renovating the Yan Kwan Halfway House	3,125,900			—	1,740,736
(4) Meeting the cost of business improvement project for enhancement of a financial management system	727,700			95,000	686,512
(5) Renovating the Tai Po Baptist Church Au Cheung Sau Fong Neighbourhood Elderly Centre	1,183,700			—	923,884
(6) Renovating the Baptist Oi Kwan Social Service Resources and Service Centre for the Relatives of Ex-Mentally Ill People at Choi Fai Estate	981,200			—	—
(7) Fitting out the additional premises of Tai Po Baptist Church Au Cheung Sau Fong Neighbourhood Elderly Centre in Tai Po	1,930,000			—	—
	10,896,700	2,380,000	2,380,000	95,000	5,260,698
					5,636,002
<b>9. Boys' and Girls' Clubs Association of Hong Kong</b>		<b>2,076,000</b>	<b>2,076,000</b>		
(1) Fitting out the sub-base of Jockey Club Fanling Children and Youth Integrated Services Centre	1,453,000			—	1,176,699
(2) Implementing a Cyber Youth Outreaching Project on a three-year pilot basis	5,200,000			1,578,320	3,140,530
(3) Furnishing and equipping for reprovisioning Jockey Club Tai Wai Children and Youth Integrated Services Centre in Sha Tin	516,000			—	—
(4) Fitting out for reprovisioning Jockey Club Tai Wai Children and Youth Integrated Services Centre in Sha Tin	8,303,000			—	—
	15,472,000	2,076,000	2,076,000	1,578,320	4,317,229
					11,154,771
<b>10. Caritas-Hong Kong</b>		<b>6,902,000</b>	<b>6,902,000</b>		
(1) Renovating the Fung Wong Fung Ting Home for the Elderly	3,200,800			—	3,031,821
(2) Meeting the start-up costs of eight integrated family service centres for initial two years	2,046,900			9,800	1,982,780
(3) Fitting out the Caritas Integrated Family Service Centre - Tsuen Wan (East) at Shek Wai Kok Estate, Tsuen Wan	3,211,300			—	3,211,230
(4) Fitting out the Caritas Dr. and Mrs. Olinto de Sousa Integrated Family Service Centre at Herring Gull House, Sha Kok Estate, Shatin	661,800			—	619,770
(5) Fitting out for reprovisioning Sham Shui Po District Elderly Community Centre to Lai Po Garden in Sham Shui Po	3,286,000			158,263	3,164,473
(6) Fitting out the additional premises of Lei Muk Shue Elderly Centre in Tsuen Wan	1,965,900			145,852	1,959,336
(7) Fitting out the Caritas Integrated Family Service Centre in Fanling	2,981,700			—	2,300,823
(8) Fitting out the Caritas Integrated Family Service Centre in Tuen Mun	3,433,300			—	3,193,800
(9) Carrying out conversion works for the Caritas Integrated Family Service Centre in Tung Tau Estate	1,613,000			—	1,320,690
(10) Renovating the Caritas Community Centre - Kowloon in Kowloon City	5,454,300			715,804	5,444,286
(11) Repair works of underground water carrying services for Pelletier Hall, Choi Wan	1,012,900			156,221	1,012,821
(12) Fitting out an additional premises of a district elderly community centre in Tin Shui Wai, Yuen Long	1,990,300			—	1,759,056
					231,244



# Lotteries Fund

## STATEMENT OF APPROVED GRANTS—continued

## SCHEDULE 1

Descriptions	Approved Commitments	2012-13 Expenditure		Accumulated Expenditure to 31.3.2013	Unspent Balances (N=Not required)	
	HKS	Original Estimate HKS	Amended Estimate HKS	Actual HKS	HKS	
(13) Fitting out an integrated family service centre at Aldrich Bay Road, Shau Kei Wan	3,968,300			—	3,351,718	616,582
(14) Fitting out the Caritas Integrated Family Service Centre - Aberdeen (Tin Wan/Pok Fu Lam) (3/F)	1,423,400			1,199	1,143,701	279,699
(15) Fitting out the Caritas Integrated Family Service Centre - Aberdeen (Tin Wan/Pok Fu Lam) (5/F)	940,200			—	881,058	59,142
(16) Furnishing and equipping the Caritas Integrated Family Service Centre - Aberdeen (Tin Wan/Pok Fu Lam)	483,800			215,385	409,442	74,358
(17) Fitting out for reprovisioning Caritas Elderly Centre to Choi Ying Estate, Kwun Tong	2,710,700			—	2,469,588	241,112
(18) Preventive/Maintenance measures for two cut slopes lying within the lot boundary of Li Ka Shing Care and Attention Home in Tuen Mun	1,011,000			26,180	654,500	356,500 N
(19) Fitting out the Caritas HUGS Centre at Tai Hing Estate, Tuen Mun	2,271,100			—	2,029,125	241,975
(20) Purchasing the upgraded furniture and equipment items for residential care homes for the elderly and day care centres for the elderly	1,593,830			—	1,559,970	33,860 N
(21) Renovating the Caritas Elderly Centre - Central District in Central	907,000			52,229	703,619	203,381
(22) Fitting out the sub-base of Caritas Day Care Centre for the Elderly in West Kowloon	708,200			—	606,100	102,100
(23) Furnishing and equipping Caritas Day Care Centre for the Elderly in West Kowloon	780,100			32,697	742,150	37,950
(24) Carrying out conversion works for the existing premises of Caritas Day Care Centre for the Elderly in West Kowloon	424,100			402,527	402,527	21,573
(25) Fitting out the new premises of Caritas Integrated Home Care Services in Sham Shui Po	903,600			773,300	773,300	130,300
(26) Fitting out a new district support centre for persons with disabilities at Cheung On Estate, Tsing Yi	3,260,100			—	3,019,706	240,394
(27) Fitting out the additional premises of Caritas Kwun Tong Elderly Centre in Kwun Tong	1,185,000			—	—	1,185,000 N
(28) Fitting out for reprovisioning Elderly Centre - Shatin to Tai Wai	3,126,000			—	—	3,126,000 N
(29) Implementing a Cyber Youth Outreaching Project on a three-year pilot basis	5,200,000			1,669,000	2,974,900	2,225,100
(30) Undertaking fire safety/building safety rectification measures for Caritas Lai Hong Home	1,474,000			—	—	1,474,000
(31) Replacing the existing 12-seater private light bus with a new 14-seater liquefied petroleum gas private light bus for Caritas Day Care Centre for the Elderly in West Kowloon	775,000			—	—	775,000
(32) Replacing the existing 16-seater private light bus with a new 16-seater liquefied petroleum gas private light bus for Caritas Lok Ngai Day Activity Centre	510,000			—	—	510,000
(33) Replacing the existing 13-seater private light bus with a new 13-seater liquefied petroleum gas private light bus for Caritas Lok Yin Day Activity Centre	778,000			—	—	778,000
(34) Fitting out for setting up Caritas Personal Growth Centre for Men in Wong Tai Sin	1,185,000			—	—	1,185,000
(35) Furnishing and equipping for Caritas Evergreen Home in Sai Ying Pun	1,757,000			820,352	820,352	936,648
(36) Fitting out for reprovisioning Caritas Integrated Family Service Centre - Tung Tau (Wong Tai Sin South West)	7,082,000			—	—	7,082,000
(37) Additional fitting out works for the reprovisioning of Caritas Sha Tin Elderly Centre in Sha Tin	574,000			—	—	574,000
(38) Replacing the existing 12-seater private light bus with a new 27-seater private bus for Caritas Resurrection School	623,000			—	—	623,000



# Lotteries Fund

## STATEMENT OF APPROVED GRANTS—continued

## SCHEDULE 1

Descriptions	Approved Commitments	2012–13 Expenditure			Accumulated Expenditure to 31.3.2013	Unspent Balances (N=Not required)
	HKS	Original Estimate HKS	Amended Estimate HKS	Actual HKS	HKS	HKS
(39) Replacing a vehicle for Caritas Jockey Club Lok Yan School	782,000			—	—	782,000
(40) Upgrading the provision of hospital beds in Caritas Lai Kok Home	403,000			—	—	403,000
(41) Upgrading the provision of hospital beds in Caritas Li Ka Shing Care and Attention Home	520,000			—	—	520,000
	78,217,630	6,902,000	6,902,000	5,178,809	51,542,642	26,674,988
<b>11. Charmind Limited</b>		<b>1,000,000</b>	<b>1,000,000</b>			
(1) Fitting out a residential care home for the elderly cum day care unit at Shek Yam Estate, Kwai Chung	18,388,300			—	16,719,294	1,669,006
(2) Furnishing and equipping a residential care home for the elderly cum day care unit at Shek Yam Estate, Kwai Chung	2,205,400			—	2,155,400	50,000
	20,593,700	1,000,000	1,000,000	—	18,874,694	1,719,006
<b>12. Cheung Chau Rural Committee Integrated Youth Centre</b>						
Renovating the Cheung Chau Rural Committee Integrated Youth Centre in Cheung Chau	2,664,500	—	128,000	17,931	2,464,227	200,273 N
<b>13. Chi Lin Nunnery</b>		<b>1,196,000</b>	<b>1,296,000</b>			
(1) Upgrading the provision of hospital beds in Chi Lin Care and Attention Home	1,296,000			1,296,000	1,296,000	—
(2) Upgrading the provision of hospital beds in Chi Lin Care and Attention Home	1,300,000			—	—	1,300,000
	2,596,000	1,196,000	1,296,000	1,296,000	1,296,000	1,300,000
<b>14. Chinese Evangelical Zion Church Limited</b>						
Renovating the Tze Wan Shan Integrated Children and Youth Services Centre	2,693,900	—	—	—	2,601,513	92,387 N
<b>15. Chinese Rhenish Church Hong Kong Synod</b>		<b>8,537,000</b>	<b>8,537,000</b>			
(1) Renovating, furnishing and equipping Sze Tian Rhenish Home for the Elderly in Kwai Chung	7,157,400			4,478,919	5,347,303	1,810,097
(2) Renovating, furnishing and equipping Wong Siu Ching Rhenish Home for the Elderly in Sha Tin	10,729,000			754,799	1,530,712	9,198,288
(3) Purchasing a new 14-seater liquefied petroleum gas private light bus for Sze Tian Rhenish Home for the Elderly in Kwai Chung	700,000			693,190	693,190	6,810 N
(4) Upgrading the provision of hospital beds in Kwai Shing East Rhenish Care and Attention Home	661,000			441,660	441,660	219,340 N
(5) Upgrading the provision of hospital beds in Sze Tian Rhenish Home for the Elderly	506,000			337,740	337,740	168,260 N
(6) Upgrading the provision of hospital beds in Kwai Shing East Rhenish Care and Attention Home	923,000			—	—	923,000
(7) Upgrading the provision of hospital beds in Wong Siu Ching Rhenish Home for the Elderly	624,000			—	—	624,000
	21,300,400	8,537,000	8,537,000	6,706,308	8,350,605	12,949,795
<b>16. Chinese Young Men's Christian Association of Hong Kong</b>		<b>852,000</b>	<b>1,623,000</b>			
(1) Fitting out a new integrated children and youth services centre in Tin Shui Wai	5,348,000			—	4,710,100	637,900
(2) Fitting out the additional premises of Chai Wan Neighbourhood Elderly Centre in Chai Wan	1,417,000			1,280,362	1,280,362	136,638
(3) Renovating Home of Love Sheltered Workshop in Sheung Wan	2,480,000			—	—	2,480,000
(4) Renovating Y's Men's Centre for the Deaf in Sau Mau Ping	2,356,000			—	—	2,356,000

# Lotteries Fund

## STATEMENT OF APPROVED GRANTS—continued

## SCHEDULE 1

Descriptions	Approved Commitments	2012–13 Expenditure			Accumulated Expenditure to 31.3.2013	Unspent Balances (N=Not required)
	HKS	Original Estimate HKS	Amended Estimate HKS	Actual HKS	HKS	HKS
(5) Renovating Home of Love - Wah Fu Hostel in Aberdeen	2,626,000			—	—	2,626,000
(6) Furnishing and equipping for reprovisioning Shek Kip Mei Centre to Shek Kip Mei	617,000			—	—	617,000
(7) Fitting out for reprovisioning Shek Kip Mei Centre to Shek Kip Mei	6,826,000			—	—	6,826,000
	21,670,000	852,000	1,623,000	1,280,362	5,990,462	15,679,538
<b>17. Ching Chung Taoist Association of Hong Kong Limited</b>		1,549,000	1,549,000			
(1) Carrying out drainage works for the Ching Chung Care and Attention Home for the Aged in Yuen Long	2,061,300			99,196	978,893	1,082,407
(2) Renovating Rev. Hau Po Woon Social Centre for the Elderly in Yuen Long	1,130,000			(10,173)	—	1,130,000 N
(3) Upgrading the provision of hospital beds in Ching Chung Care and Attention Home for the Aged	519,000			380,000	380,000	139,000
	3,710,300	1,549,000	1,549,000	469,023	1,358,893	2,351,407
<b>18. Christian Action</b>						
Enhanced New Dawn Project from October 2007 to March 2010 in Sha Tin/Tai Po and North	1,845,000	—	—	—	1,506,000	339,000
<b>19. Christian &amp; Missionary Alliance Church Union Hong Kong Limited</b>		—	629,000			
(1) Fitting out the additional premises of Cheung Hang Neighbourhood Elderly Centre at Tsing Yi	1,465,200			92,843	1,443,176	22,024 N
(2) Fitting out Lam Tin Neighbourhood Elderly Centre in Yau Tong	2,661,800			403,076	2,529,653	132,147
	4,127,000	—	629,000	495,919	3,972,829	154,171
<b>20. Christian Family Service Centre</b>		39,655,000	39,655,000			
(1) Renovating, furnishing and equipping for in-situ expansion of the Serene Court, a refuge centre for women	3,944,900			188,746	3,057,510	887,390
(2) Installing air-conditioning for Yam Pak Charitable Foundation King Lam Home for the Elderly in Tseung Kwan O	454,200			387,885	387,885	66,315
(3) Renovating Wong Tai Sin Integrated Home Care Services Team at Tung Tau Estate, Kowloon	1,117,300			48,000	966,989	150,311
(4) Fitting out a day care centre for the elderly at Tsui Lam Estate, Tseung Kwan O	3,626,400			—	3,406,392	220,008
(5) Furnishing and equipping a day care centre for the elderly at Tsui Lam Estate, Tseung Kwan O	3,004,700			—	3,003,974	726 N
(6) Meeting the operating cost to implement a 3-year pilot scheme on home care services for persons with severe disabilities in Kwun Tong	78,553,000			21,814,739	41,322,268	37,230,732
(7) Fitting out the office under the pilot scheme on home care services for persons with severe disabilities in Kwun Tong	1,649,000			1,145,366	1,145,366	503,634
(8) Renovating, furnishing and equipping Tak Tin Kindergarten in Lam Tin	2,209,000			853,423	870,285	1,338,715
(9) Renovating, furnishing and equipping Cheerland Kindergarten in Kwun Tong	2,270,000			668,382	686,323	1,583,677
(10) Replacing the existing 12-seater private light bus with a 14-seater liquefied petroleum gas private light bus for Kwun Tong Day Care Centre for the Elderly	640,000			637,568	637,568	2,432 N
(11) Renovating, furnishing and equipping Yang Chen House in Tseung Kwan O	14,053,000			—	23,000	14,030,000
(12) Upgrading the provision of hospital beds in Yam Pak Charitable Foundation King Lam Home for the Elderly	726,000			641,088	641,088	84,912

# Lotteries Fund

## STATEMENT OF APPROVED GRANTS—continued

## SCHEDULE 1

Descriptions	Approved Commitments	2012–13 Expenditure			Accumulated Expenditure to 31.3.2013	Unspent Balances (N=Not required)
	HKS	Original Estimate HKS	Amended Estimate HKS	Actual HKS	HKS	HKS
(13) Upgrading the provision of hospital beds in Yang Chen House	609,000			203,262	203,262	405,738
(14) Purchasing a 16-seater liquefied petroleum gas private light bus and essential equipment for Enhanced Home and Community Care Services Teams in Wong Tai Sin and Kwun Tong Cluster	2,295,000			2,219,996	2,291,181	3,819
(15) Renovating headquarters building in Kwun Tong	692,000			—	—	692,000
(16) Renovating Shing Mong Supported Hostel in Tseung Kwan O	2,616,000			23,562	23,562	2,592,438
(17) Renovating Shing Shun Small Group Home in Tseung Kwan O	1,600,000			14,411	14,411	1,585,589
(18) Renovating On Yee Hostel and On Yue Hostel in Chai Wan	3,130,000			28,193	28,193	3,101,807
(19) Replacing vehicles for Kwun Tong Integrated Home Care Services Team	2,248,000			—	—	2,248,000
	125,437,500	39,655,000	39,655,000	28,874,621	58,709,257	66,728,243
<b>21. Chuk Lam Ming Tong Limited</b>		1,122,000	1,122,000			
(1) Upgrading the provision of hospital beds in Chuk Lam Ming Tong Care and Attention Home for the Aged	1,413,000			—	—	1,413,000
(2) Replacing the existing vehicle for Chuk Lam Ming Tong Care and Attention Home for the Aged	791,000			—	—	791,000
	2,204,000	1,122,000	1,122,000	—	—	2,204,000
<b>22. Chung Shak Hei (Cheung Chau) Home for the Aged Limited</b>						
Renovating Chung Shak Hei (Cheung Chau) Home for the Aged	1,481,000	—	—	—	—	1,481,000
<b>23. Chung Sing Benevolent Society</b>						
Upgrading the provision of hospital beds in Lau Mui Hin Home for the Elderly	726,000	576,000	616,000	—	—	726,000
<b>24. Direction Association for the Handicapped</b>						
Replacing the existing 9-seater private light bus with a new 12-seater private light bus for Head Office cum Activity Centre	697,000	697,000	697,000	—	—	697,000
<b>25. Director of Social Welfare Incorporated</b>						
Community Investment and Inclusion Fund	200,000,000	33,000,000	33,000,000	23,894,270	186,498,995	13,501,005
<b>26. ELCHK, Social Service Head Office</b>		3,780,000	4,954,000			
(1) Renovating, furnishing and equipping the additional premises of Tai Wo Integrated Youth Services Centre	992,000			62,147	960,151	31,849 N
(2) Purchasing essential furniture and equipment items for the district support centre for persons with disabilities	622,870			—	620,913	1,957 N
(3) Purchasing the upgraded furniture and equipment items for residential care home for the elderly and day care centre for the elderly	457,000			13,919	327,499	129,501
(4) Renovating, furnishing and equipping Ling Kung Nursery School in Tsing Yi	1,353,000			134,750	1,090,365	262,635
(5) Fitting out the additional premises of Ma On Shan District Elderly Community Centre cum Day Care Unit in Sha Tin	3,419,000			1,268,762	1,268,762	2,150,238
(6) Furnishing and equipping the additional premises of Ma On Shan District Elderly Community Centre cum Day Care Unit in Sha Tin	1,125,000			97,890	97,890	1,027,110
(7) Purchasing essential equipment for Enhanced Home and Community Care Services Teams in Sha Tin, Tuen Mun and New Territories East Cluster	478,000			—	477,922	78 N

# Lotteries Fund

## STATEMENT OF APPROVED GRANTS—continued

## SCHEDULE 1

Descriptions	Approved Commitments	2012–13 Expenditure			Accumulated Expenditure to 31.3.2013	Unspent Balances (N=Not required)
	HKS	Original Estimate HKS	Amended Estimate HKS	Actual HKS	HKS	HKS
(8) Upgrading the provision of hospital beds in Shan King Care and Attention Home for the Elderly	519,000			476,000	476,000	43,000
(9) Fitting out Enlighten Centre in Tin Shui Wai	2,162,000			122,661	122,661	2,039,339
(10) Furnishing and equipping Enlighten Centre in Tin Shui Wai	437,000			—	—	437,000
(11) Upgrading the provision of hospital beds in Shan King Care and Attention Home for the Elderly	715,000			—	—	715,000
	12,279,870	3,780,000	4,954,000	2,176,129	5,442,163	6,837,707
<b>27. E.T. Investment Limited</b>						
Fitting out a residential care home for the elderly at Tsz Lok Estate, Tsz Wan Shan	25,053,700	1,000,000	1,000,000	—	21,630,958	3,422,742
<b>28. Fu Hong Society</b>						
		6,877,000	6,877,000			
(1) Renovating the Father Tapella Home in Tsuen Wan	1,709,100			—	1,568,545	140,555
(2) Fitting out a district support centre for persons with disabilities at Tin Chak Estate, Tin Shui Wai	5,042,800			210,190	4,621,986	420,814 N
(3) Renovating the Yau Chong Home in Tuen Mun	2,007,800			—	1,492,280	515,520
(4) Renovating Fu Hong Society Tin Yiu Home in Tin Shui Wai	5,238,000			—	4,559,901	678,099
(5) Renovating Shun Lee Adult Training Centre in Kwun Tong	1,309,700			7,938	1,088,848	220,852
(6) Re-developing its bulk purchase system under the business improvement project	847,300			535,771	535,771	311,529 N
(7) Renovating Fu Hong Society Rehabilitation Centre at Yue Kwong Road, Aberdeen	10,727,900			5,000	37,550	10,690,350
(8) Undertaking fire safety/building safety rectification measures to meet the licensing requirements under the future legislation relating to residential care homes for persons with disabilities for Lok Wah Adult Training Centre	433,000			385,829	385,829	47,171
(9) Undertaking fire safety/building safety rectification measures for Leung King Adult Training Centre	492,000			—	424,610	67,390
(10) Fitting out for setting up an Integrated Community Centre for Mental Wellness in Wah Fu	2,149,000			1,880,200	1,917,100	231,900
(11) Renovating Chak On Adult Training Centre in Sham Shui Po	3,224,000			26,400	55,400	3,168,600
(12) Replacing the existing 14-seater private light bus with a new 14-seater liquefied petroleum gas private light bus for Sheung Li Uk Adult Training Centre	734,000			734,000	734,000	—
(13) Undertaking fire safety/building safety rectification measures to meet the statutory requirements under the Residential Care Homes (Persons with Disabilities) Ordinance for Concordia Casa Famiglia	408,000			—	—	408,000
(14) Undertaking fire safety/building safety rectification measures to meet the statutory requirements under the Residential Care Homes (Persons with Disabilities) Ordinance for Wo Che Adult Training Centre	420,000			—	—	420,000
	34,742,600	6,877,000	6,877,000	3,785,328	17,421,820	17,320,780
<b>29. Fung Kai Public School</b>						
Replacing the existing 14-seater private light bus with a new 13-seater liquefied petroleum gas private light bus for Fung Kai Day Care Centre for the Elderly in Sheung Shui	619,000	—	—	—	573,313	45,687 N
<b>30. Glorious Praise Fellowship (Hong Kong) Limited</b>						
Meeting the cost of rectification and improvement works, and furnishing and equipping a drug dependent persons treatment and rehabilitation centre in Siu Lam	5,851,400	2,779,000	2,779,000	—	176,400	5,675,000

# Lotteries Fund

## STATEMENT OF APPROVED GRANTS—continued

## SCHEDULE 1

Descriptions	Approved Commitments	2012–13 Expenditure		Accumulated Expenditure to 31.3.2013	Unspent Balances (N=Not required)
	HKS	Original Estimate HKS	Amended Estimate HKS	Actual HKS	HKS
<b>31. Harmony House Limited</b>					
Carrying out reinstatement works for the Shelter (Refuge for the Women) in Sha Tin	1,607,000	964,000	1,329,000	1,282,865	324,135
<b>32. Haven of Hope Christian Service</b>		<b>10,649,000</b>	<b>13,822,000</b>		
(1) Renovating the Haven of Hope Integrated Vocational Rehabilitation Services Centre in Choi Hung	6,571,500			953,436	5,588,064
(2) Fitting out a new district support centre for persons with disabilities in Tseung Kwan O	3,626,400			—	473,030
(3) Meeting the operating cost to implement a 3-year pilot scheme on home care services for frail elders in Kwun Tong	17,640,000			5,880,000	5,390,000
(4) Replacing the existing vehicle with a 14-seater liquefied petroleum gas private light bus for Haven of Hope Nursing Home	645,000			634,771	10,229 N
(5) Replacing two existing 12-seater private light buses with two new 14-seater liquefied petroleum gas private light buses for Tsui Lam Day Care Centre for the Elderly	1,430,000			1,429,542	458 N
(6) Purchasing a 16-seater liquefied petroleum gas private light bus and essential equipment for Enhanced Home and Community Care Services Teams in Sai Kung and Wong Tai Sin/Sai Kung Cluster	1,404,000			764,771	639,229
(7) Undertaking fire safety/building safety rectification measures to meet the statutory requirements under the Residential Care Homes (Persons with Disabilities) Ordinance for Hang Hau Care and Attention Home for Severely Disabled	548,000			—	548,000
(8) Upgrading the provision of hospital beds in Haven of Hope Nursing Home	2,600,000			—	2,600,000
	34,464,900	10,649,000	13,822,000	9,662,520	15,249,010
<b>33. Heep Hong Society</b>		<b>3,624,000</b>	<b>5,707,000</b>		
(1) Meeting the fitting out costs arising from the re-provisioning of Portland Street Early Education and Training Centre, Tai Hang Tung Parents Resource Centre and Healthy Kids Centre to Mong Kok West Area 20 Phase 4	6,070,900			—	511,160
(2) Fitting out the additional premises of Cheung Ching Early Education and Training Centre, Tsing Yi	665,500			—	51,553
(3) Fitting out a new 48-place special child care centre cum 40-place early education and training centre at Yu Ming Court, Tseung Kwan O	3,752,200			—	258,361
(4) Fitting out for expanding Pak Tin Early Education and Training Centre at Pak Tin Estate	805,900			—	161,992
(5) Renovating Heep Hong Society Alice Louey Centre in Tai Po	1,396,300			206,177	223,651
(6) Fitting out for expanding Heep Hong Society Wan Tsui Centre in Chai Wan	1,880,400			456	354,850
(7) Renovating Pak Tin Early Education and Training Centre in Sham Shui Po	980,000			761,228	218,772
(8) Renovating Tin Ping Centre in Sheung Shui	2,059,000			30,000	2,029,000
(9) Renovating Wan Tsui Centre in Chai Wan	1,839,000			1,622,921	216,079
(10) Replacing the existing 49-seater private bus with a new 45-seater private bus for Mary Wong Centre	1,483,000			1,418,431	64,569
	20,932,200	3,624,000	5,707,000	4,039,213	4,089,987
<b>34. Helping Hand</b>		<b>9,049,000</b>	<b>9,049,000</b>		
(1) Capital cost of building a new residential care home for the elderly at Cheung Muk Tau Holiday Centre for the Elderly in Sai Kung	82,198,000			—	10,739,628

# Lotteries Fund

## STATEMENT OF APPROVED GRANTS—continued

## SCHEDULE 1

Descriptions	Approved Commitments	2012–13 Expenditure		Accumulated Expenditure to 31.3.2013	Unspent Balances (N=Not required)
	HK\$	Original Estimate HK\$	Amended Estimate HK\$	Actual HK\$	HK\$
(2) Replacing the existing 24-seater private bus with a new one for Cheung Muk Tau Holiday Centre for the Elderly in Sai Kung	415,000			365,237	365,237 49,763
(3) Upgrading the provision of hospital beds in Helping Hand Hong Kong Bank Foundation Lok Fu Care Home	804,000			674,560	674,560 129,440 N
(4) Renovating, furnishing and equipping and purchasing vehicle for in-situ expansion of Cheung Muk Tau Holiday Centre for the Elderly - Day Care Unit in Sai Kung	2,524,000			—	— 2,524,000
(5) Reinstatement works for the former Chak On Jockey Club Care Home in Sham Shui Po	904,000			—	— 904,000
(6) Reinstatement works for Helping Hand Kwai Shing West Care Home in Kwai Chung	683,000			—	— 683,000
(7) Reinstatement works for Helping Hand Tai Wo Hau Christa Tisdall Jockey Club Care Home in Kwai Chung	807,000			—	— 807,000
(8) Upgrading the provision of hospital beds in Helping Hand Lai Yiu Bradbury Care Home	585,000			—	— 585,000
	88,920,000	9,049,000	9,049,000	1,039,797	72,498,169 16,421,831
<b>35. Heung Hoi Ching Kok Lin Association</b>		<b>2,109,000</b>	<b>2,109,000</b>		
(1) Renovating the Buddhist Li Ka Shing Care and Attention Home for the Elderly	5,844,500			—	4,905,409 939,091
(2) Renovating Buddhist Po Ching Care and Attention Home for the Aged Women in Fanling	3,893,500			72,000	72,000 3,821,500
(3) Renovating, furnishing and equipping Buddhist Li Chong Yuet Ming Nursing Home for the Elderly in Sheung Shui	9,981,000			—	— 9,981,000
(4) Upgrading the provision of hospital beds in Buddhist Li Chong Yuet Ming Nursing Home for the Elderly	3,406,000			—	— 3,406,000
(5) Upgrading the provision of hospital beds in Buddhist Li Ka Shing Care and Attention Home for the Elderly	780,000			—	— 780,000
(6) Upgrading the provision of hospital beds in Buddhist Po Ching Care and Attention Home for the Aged Women	1,677,000			—	— 1,677,000
(7) Upgrading the provision of hospital beds in Buddhist Po Ching Home for the Aged Women	2,340,000			—	— 2,340,000
	27,922,000	2,109,000	2,109,000	72,000	4,977,409 22,944,591
<b>36. Hong Chi Association</b>		<b>20,364,000</b>	<b>20,364,000</b>		
(1) Implementing a business improvement project-human resources management system by Hong Chi Association	714,600			576,855	712,716 1,884 N
(2) Renovating, furnishing and equipping in-situ expansion of Hong Chi Children Home at Pinehill Village, Chung Nga Road, Tai Po	1,589,100			62,145	1,551,793 37,307
(3) Renovating the Jockey Club Hong Chi Sun Chui Workshop cum Hostel in Sha Tin	6,400,600			—	— 6,400,600
(4) Renovating Hong Chi Wan Tau Tong Centre at Wan Tau Tong Estate, Tai Po	2,802,800			255,842	2,440,637 362,163
(5) Fitting out a new district support centre for persons with disabilities at Shun Lee Estate, Kwun Tong	3,870,600			3,605,255	3,605,255 265,345
(6) Furnishing and equipping a new district support centre for persons with disabilities at Shun Lee Estate, Kwun Tong	415,800			398,740	398,740 17,060 N
(7) Renovating Hong Chi Lei Muk Shue Hostel for in-situ expansion in Tsuen Wan	3,550,600			—	— 3,550,600
(8) Replacing the existing 16-seater private light bus with a new 24-seater school bus for Hong Chi Morninglight School, Tuen Mun	578,400			—	578,373 27 N
(9) Fitting out costs for reprovisioning the day care centre of Hong Chi Lei Mu Shue Centre	4,823,000			610,520	3,941,048 881,952

# Lotteries Fund

## STATEMENT OF APPROVED GRANTS—continued

## SCHEDULE 1

Descriptions	Approved Commitments	2012–13 Expenditure			Accumulated Expenditure to 31.3.2013	Unspent Balances (N=Not required)
	HKS	Original Estimate HKS	Amended Estimate HKS	Actual HKS	HKS	HKS
(10) Renovating the Jockey Club Hong Chi Siu Sai Wan Workshop in Chai Wan	4,554,700			4,145,518	4,145,518	409,182
(11) Renovating Hong Chi Shui Choi Centre and Hong Chi Shui Choi Hostel in Tin Shui Wai	8,211,800			997,116	997,116	7,214,684
(12) Replacing the existing 48-seater private bus with a new one for Hong Chi Pinehill School in Tai Po	1,191,300			—	1,070,273	121,027 N
(13) Renovating Hong Chi Fu Heng Hostel at Tai Po	6,593,000			—	—	6,593,000
(14) Replacing the existing 25-seater private bus with a new 29-seater private bus for Hong Chi Morninghope School, Tuen Mun	695,000			—	—	695,000
(15) Purchasing a new vehicle for Hong Chi Morningjoy School, Yuen Long	747,000			—	—	747,000
(16) Replacing the existing 24-seater private bus with a new 26-seater diesel private bus for Hong Chi Pinehill No.3 School	1,875,000			—	—	1,875,000
(17) Undertaking fire safety/building safety rectification measures to meet the statutory requirements under the Residential Care Homes (Persons with Disabilities) Ordinance for Hong Chi Fu Shin Hostel	497,000			—	—	497,000
(18) Purchasing a vehicle for Hong Chi Pinehill No.2 School	903,000			—	—	903,000
	50,013,300	20,364,000	20,364,000	10,651,991	19,441,469	30,571,831
<b>37. Hong Kong and Kowloon Kai Fong Women's Association Limited</b>						
Renovating, purchasing furniture and equipment for Ting Sun Hui Chiu Nursery at Mei Lam Estate	705,600	136,000	136,000	—	501,768	203,832
<b>38. Hong Kong and Macau Lutheran Church Limited</b>						
Upgrading the provision of hospital beds in Wai Kei Hostel	519,000	519,000	519,000	445,000	445,000	74,000 N
<b>39. Hong Kong Bodhi Siksa Society Limited</b>		4,768,000	4,768,000			
(1) Constructing a care and attention home at Lo Wai, Tsuen Wan	37,283,800			(390,409)	34,397,756	2,886,044 N
(2) Carrying out slope maintenance works for the Hong Kong Bodhi Siksa Society Limited Care and Attention Home for the Aged, Tsuen Wan	504,800			153,187	153,187	351,613
(3) Replacing the existing 12-seater private light bus with a new one for the Hong Kong Bodhi Siksa Society Limited Care and Attention Home for the Aged in Tsuen Wan	723,000			—	667,154	55,846 N
(4) Upgrading the provision of hospital beds in Hong Kong Bodhi Siksa Society Limited Care and Attention Home for the Aged	972,000			581,250	581,250	390,750 N
(5) Renovating the Hong Kong Bodhi Siksa Society Limited Care and Attention Home for the Aged in Tsuen Wan	4,161,000			25,000	25,000	4,136,000
	43,644,600	4,768,000	4,768,000	369,028	35,824,347	7,820,253
<b>40. Hong Kong Buddhist Association</b>		3,062,000	10,195,000			
(1) Renovating, furnishing and equipping the Buddhist Sum Ma Shui Ying Care and Attention Home for the Elderly in Kwun Tong	14,558,800			3,035,638	3,035,638	11,523,162
(2) Fitting out the additional premises of Buddhist Ching Hang Neighbourhood Elderly Centre in Tsz Wan Shan	2,040,000			—	—	2,040,000
(3) Upgrading the provision of hospital beds in Buddhist Sum Ma Shui Ying Care and Attention Home for the Elderly	1,196,000			—	—	1,196,000
	17,794,800	3,062,000	10,195,000	3,035,638	3,035,638	14,759,162

# Lotteries Fund

## STATEMENT OF APPROVED GRANTS—continued

## SCHEDULE 1

Descriptions	Approved Commitments	2012–13 Expenditure			Accumulated Expenditure to 31.3.2013	Unspent Balances (N=Not required)
	HKS	Original Estimate HKS	Amended Estimate HKS	Actual HKS	HKS	HKS
<b>41. Hong Kong Catholic Marriage Advisory Council</b>						
Fitting out the Western District Integrated Family Service Centre at Kennedy Town, HK	2,117,300	—	—	—	2,000,021	117,279
<b>42. Hong Kong Children and Youth Services</b>						
Purchasing vehicle, smart phones and furnishing and equipping Ma On Shan Youth Outreaching Social Work Team	594,000	—	—	—	—	594,000
<b>43. Hong Kong Chinese Women's Club</b>			<b>1,596,000</b>			
(1) Furnishing and equipping for setting up a new day care centre for the elderly in Kwun Tong	2,149,000	—	—	—	—	2,149,000
(2) Fitting out for setting up a new day care centre for the elderly in Kwun Tong	3,432,000	—	—	—	—	3,432,000
	5,581,000	—	<b>1,596,000</b>	—	—	5,581,000
<b>44. Hong Kong Christian Mutual Improvement Society</b>						
Renovating the Ko Chiu Road Centre of Christ Love for the Aged in Yau Tong	1,020,400	<b>510,000</b>	<b>510,000</b>	<b>375,492</b>	961,308	59,092
<b>45. Hong Kong Christian Service</b>		<b>5,402,000</b>	<b>5,402,000</b>			
(1) Fitting out a new 60-place day care centre for the elderly at Lok Wah (South) Estate	1,973,000	—	—	—	1,717,900	255,100
(2) Meeting the start-up costs of an integrated family service centre for initial two years	255,900	—	—	—	243,105	12,795
(3) Fitting out for reprovisioning Wan Tsui Education and Training Centre to Wan Tsui Estate	2,112,400	—	—	<b>134,256</b>	2,095,078	17,322 N
(4) Meeting the cost of conversion works, furnishing and equipping for the Yau Tsim Integrated Family Service Centre	3,428,300	—	—	—	2,863,518	564,782
(5) Fitting out the Morrison Hill Child Development Centre at Tang Shiu Kin Hospital, Wan Chai	443,600	—	—	—	402,411	41,189
(6) Fitting out for reprovisioning the So Uk Neighbourhood Elderly Centre to Un Chau Estate, Sham Shui Po	3,931,700	—	—	—	3,050,371	881,329
(7) Fitting out the School Social Work Office in Wong Tai Sin	1,831,500	—	—	—	1,747,607	83,893 N
(8) Renovating the Shun Lee Neighbourhood Elderly Centre in Kwun Tong	1,299,600	—	—	—	1,221,898	77,702
(9) Fitting out for reprovisioning the Wan Hon District Elderly Community Centre in Kwun Tong	3,736,300	—	—	—	—	3,736,300 N
(10) Upgrading the provision of hospital beds in Cheung Fat Home for the Elderly	428,000	—	—	<b>384,450</b>	384,450	43,550 N
(11) Replacing the existing 29-seater private bus with a new 38-seater private bus for Pui Oi School	1,610,000	—	—	<b>1,543,703</b>	1,543,703	66,297
(12) Renovating, furnishing and equipping Tai Hang Tung Nursery School in Tai Hang Tung	408,000	—	—	<b>404,063</b>	404,063	3,937
(13) Replacing two passenger lifts for Christian Ecumenical Building in Tsim Sha Tsui	1,793,000	—	—	<b>19,500</b>	19,500	1,773,500
(14) Fitting out for reprovisioning Lotus Day Care Centre for the Elderly to Sham Shui Po	2,162,000	—	—	—	—	2,162,000
(15) Purchasing a 14-seater liquefied petroleum gas private light bus for Shun Lee Home for the Elderly	867,000	—	—	—	—	867,000
	26,280,300	<b>5,402,000</b>	<b>5,402,000</b>	<b>2,485,972</b>	15,693,604	10,586,696
<b>46. HKCT Group Limited</b>						
Enhanced New Dawn Project from October 2007 to March 2010 in Wong Tai Sin/Sai Kung/Tseung Kwan O	1,845,000	—	—	<b>(1,121,427)</b>	384,573	1,460,427 N



# Lotteries Fund

## STATEMENT OF APPROVED GRANTS—continued

## SCHEDULE 1

Descriptions	Approved Commitments	2012–13 Expenditure		Accumulated Expenditure to 31.3.2013	Unspent Balances (N=Not required)	
	HKS	Original Estimate HKS	Amended Estimate HKS	HKS	HKS	
<b>47. Hong Kong Council of Social Service</b>		—	<b>68,000</b>			
(1) Implementing core applications development on human resource management and/or financial management for non-government organisations under the third batch of business improvement project scheme	18,150,800			—	15,305,958	2,844,842 N
(2) Carrying out fire safety improvement works for the Duke of Windsor Social Service Building in Wan Chai	2,858,000			—	—	2,858,000
	<u>21,008,800</u>	<u>—</u>	<u>68,000</u>	<u>—</u>	<u>15,305,958</u>	<u>5,702,842</u>
<b>48. Hong Kong Down Syndrome Association</b>		<b>850,000</b>	<b>1,479,000</b>			
(1) Renovating the Tiptop Training Centre in Sha Tin	2,096,700			—	2,074,280	22,420 N
(2) Fitting out the basic facilities of vacant premises at Shun Ning Road for setting up vocational rehabilitation service for people with disabilities	1,909,700			—	1,814,819	94,881 N
(3) Renovating Bradbury Parents Resource Centre in Wong Tai Sin	1,584,200			<b>1,344,531</b>	1,344,531	239,669
	<u>5,590,600</u>	<u>850,000</u>	<u>1,479,000</u>	<u>1,344,531</u>	<u>5,233,630</u>	<u>356,970</u>
<b>49. Hong Kong Family Welfare Society</b>		<b>3,295,000</b>	<b>3,295,000</b>			
(1) Meeting the start-up costs of five integrated family service centres for initial two years	1,279,300			<b>63,965</b>	1,279,300	—
(2) Fitting out the Shun Lee Integrated Family Service Centre at Shun Lee Estate Community Centre	720,400			—	673,770	46,630
(3) Fitting out the additional premises of Sham Shui Po (West) Integrated Family Service Centre	1,416,400			—	1,405,961	10,439 N
(4) Enhanced New Dawn Project from October 2007 to March 2010 in Kwun Tong	1,845,000			<b>(209,441)</b>	1,296,559	548,441 N
(5) Fitting out for reprovisioning of school social work office in Kwai Chung	1,501,900			<b>175,954</b>	1,501,830	70 N
(6) Replacing the existing 7-seater private car with a new 14-seater liquefied petroleum gas private light bus for East Kowloon (Shun On) Centre	738,000			<b>737,241</b>	737,241	759
(7) Replacing the existing 8-seater private light bus with a new 14-seater liquefied petroleum gas private light bus for New Territories (Cheung Shan) Centre	741,000			<b>740,441</b>	740,441	559
(8) Replacing the existing 7-seater private car with a new 14-seater liquefied petroleum gas private light bus for New Territories (Tivoli) Centre	738,000			<b>737,241</b>	737,241	759
(9) Purchasing a 16-seater liquefied petroleum gas private light bus and essential equipment for Enhanced Home and Community Care Services Teams in Kwun Tong, Tsuen Wan and Islands	1,542,000			—	—	1,542,000
(10) Fitting out for reprovisioning the West Kowloon Centre - Shamshui Po (West) Integrated Family Service Centre to Un Chau Estate	6,142,000			—	—	6,142,000
	<u>16,664,000</u>	<u>3,295,000</u>	<u>3,295,000</u>	<u>2,245,401</u>	<u>8,372,343</u>	<u>8,291,657</u>
<b>50. Hong Kong Federation of Youth Groups</b>		<b>4,408,000</b>	<b>6,900,000</b>			
(1) Redeveloping the Bradbury Centre at 55 Model Lane, North Point	158,160,000			—	138,584,905	19,575,095
(2) Renovating, furnishing and equipping the Ching Lok Kindergarten and Ching Lok Nursery in Sai Wan Ho	843,900			—	765,510	78,390
(3) Carrying out a business improvement project to implement a member relationship management system	2,687,900			—	2,586,629	101,271
(4) Furnishing and equipping a new integrated children and youth service centre at Tseung Kwan O Area 86	592,300			<b>50,198</b>	592,300	—
(5) Furnishing and equipping Interactive Media Counselling Centre in Aberdeen	633,000			—	—	633,000

# Lotteries Fund

## STATEMENT OF APPROVED GRANTS—continued

## SCHEDULE 1

Descriptions	Approved Commitments	2012–13 Expenditure			Accumulated Expenditure to 31.3.2013	Unspent Balances (N=Not required)
	HK\$	Original Estimate HK\$	Amended Estimate HK\$	Actual HK\$	HK\$	HK\$
(6) Implementing a Cyber Youth Outreaching Project on a three-year pilot basis	5,200,000			1,611,200	3,085,350	2,114,650
(7) Fitting out an Interactive Media Counselling Centre in Aberdeen	5,532,000			5,100,780	5,100,780	431,220
	173,649,100	4,408,000	6,900,000	6,762,178	150,715,474	22,933,626
<b>51. Hong Kong Housing Society</b>						
Constructing a 100-place residential care home for the elderly in Sham Shui Po under an Urban Renewal Authority Development Scheme Project	28,470,000	8,541,000	8,541,000	—	—	28,470,000
<b>52. Hong Kong Lutheran Social Service - The Lutheran Church - Hong Kong Synod Limited</b>		4,691,000	7,795,000			
(1) Fitting out a new district support centre for persons with disabilities at 51 Sheung Shing Street, Homantin	3,064,800			—	2,785,342	279,458
(2) Furnishing and equipping a new district support centre for persons with disabilities at 51 Sheung Shing Street, Homantin	409,900			200,034	409,900	—
(3) Fitting out for Cheer Lutheran Centre at Ching Ho Estate, Sheung Shui	2,063,500			59,522	1,972,822	90,678
(4) Fitting out additional premises of Yau On Lutheran Centre for the Elderly in Tuen Mun	757,100			—	656,342	100,758 N
(5) Fitting out the additional premises of Sai Cho Wan Lutheran Centre for the Elderly in Kwun Tong	1,660,600			87,750	1,315,485	345,115
(6) Renovating Mr & Mrs Lawrence Wong Second Lutheran Home for the Elderly in Tseung Kwan O	7,085,000			5,823,772	5,970,172	1,114,828
(7) Fitting out the additional premises of school social work office in Sham Shui Po	1,002,000			54,125	932,900	69,100
(8) Renovating, furnishing and equipping Martha Boss Lutheran Day Care Centre for the Elderly in Kowloon City	1,277,000			—	1,238,085	38,915 N
(9) Replacing the existing 24-seater private bus with a new one for Lutheran School for the Deaf in Kwai Chung	568,000			—	565,193	2,807 N
(10) Upgrading the provision of hospital beds in Fung Tak Lutheran Home for the Elderly	454,000			—	—	454,000
(11) Renovating, furnishing and equipping Heng Fa Chuen Lutheran Day Nursery in Chai Wan	1,953,000			—	—	1,953,000
(12) Replacing a vehicle for Cheung Ching Lutheran Centre for the Disabled	735,000			—	—	735,000
	21,029,900	4,691,000	7,795,000	6,225,203	15,846,241	5,183,659
<b>53. Hong Kong PHAB Association</b>		—	766,756			
(1) Fitting out a new supported hostel for mentally/physically handicapped persons at Pokfulam Skills Centre in Aberdeen	8,644,700			506,220	8,644,680	20
(2) Furnishing and equipping a new supported hostel for mentally/physically handicapped persons at Pokfulam Skills Centre in Aberdeen	813,300			260,536	813,300	—
(3) Renovating, furnishing and equipping Kowloon East PHAB Centre in Wong Tai Sin	3,096,000			—	—	3,096,000
(4) Renovating, furnishing and equipping Hong Kong Island PHAB Centre in Chai Wan	3,056,000			—	—	3,056,000
	15,610,000	—	766,756	766,756	9,457,980	6,152,020
<b>54. Hong Kong Playground Association</b>		816,000	6,531,000			
(1) Furnishing and equipping a new integrated children and youth services centre at Choi Tak Estate, Kwun Tong	604,000			—	—	604,000

# Lotteries Fund

## STATEMENT OF APPROVED GRANTS—continued

## SCHEDULE 1

Descriptions	Approved Commitments	2012–13 Expenditure		Accumulated Expenditure to 31.3.2013	Unspent Balances (N=Not required)
	HKS	Original Estimate HKS	Amended Estimate HKS	HKS	HKS
(2) Fitting out a new integrated children and youth services centre at Choi Tak Estate, Kwun Tong	6,350,000			199,200	6,150,800
	6,954,000	816,000	6,531,000	199,200	6,754,800
<b>55. Hong Kong Red Cross</b>		<b>14,072,000</b>	<b>14,072,000</b>		
(1) Replacing the existing 37-seater private bus with a new 36-seater private bus for John F. Kennedy Centre in Pok Fu Lam	1,595,400			1,407,933	187,467 N
(2) Redeveloping Hong Kong Red Cross Headquarters at Hoi Ting Road, West Kowloon Reclamation Area	61,710,000			—	61,710,000
(3) Replacing three existing private buses with three 35-seater buses for Hong Kong Red Cross Princess Alexandra School in Kwun Tong	6,207,000			—	6,207,000
	69,512,400	14,072,000	14,072,000	1,407,933	68,104,467
<b>56. Hong Kong Sheng Kung Hui Welfare Council</b>		<b>12,943,000</b>	<b>12,943,000</b>		
(1) Constructing, furnishing and equipping the elderly service complex at Tseung Kwan O Area 22, Sai Kung	104,223,000			73,523,593	30,699,407
(2) Renovating the Hong Kong Sheng Kung Hui Li Ka Shing Care and Attention Home and Day Care Centre for the Elderly	3,956,500			3,690,283	266,217
(3) Renovating the Hong Kong Sheng Kung Hui Wong Tai Sin District Elderly Community Centre	2,657,900			193,533	7,436 N
(4) Enhanced New Dawn Project from October 2007 to March 2010 in Tsuen Wan/Kwai Tsing	1,845,000			(576,259)	915,259 N
(5) Fitting out the additional premises of Tai Wo Neighbourhood Elderly Centre at Tai Wo Estate, Tai Po	1,196,600			844,818	351,782
(6) Fitting out for reprovisioning St. Luke's Settlement Neighbourhood Elderly Centre to Kwun Lung Lau	2,246,700			2,054,668	192,032
(7) Fitting out the additional premises of Chuk Yuen Canon Martin District Elderly Community Centre in Wong Tai Sin	1,636,200			24,360	162,820
(8) Meeting the operating cost to implement a 3-year pilot scheme on home care services for frail elders in Wong Tai Sin and Sai Kung	17,640,000			5,880,000	5,390,000
(9) Replacing the existing 14-seater private light bus with a 14-seater liquefied petroleum gas private light bus for Central and Western District Day Care Centre for the Elderly	747,000			746,089	911 N
(10) Replacing the existing 12-seater private light bus with a 14-seater liquefied petroleum gas private light bus for Lok Wah Day Care Centre for the Elderly	745,000			742,604	2,396 N
(11) Furnishing and equipping a new district support centre for persons with disabilities at Leung King Estate, Tuen Mun	423,000			—	423,000
(12) Fitting out a new district support centre for persons with disabilities at Leung King Estate, Tuen Mun	4,066,000			21,245	4,044,755
(13) Upgrading the provision of hospital beds in Hong Kong Sheng Kung Hui Li Ka Shing Care and Attention Home for the Elderly	428,000			427,350	650 N
(14) Renovating Hong Kong Sheng Kung Hui Li Ka Shing Care and Attention Home for the Elderly and Hong Kong Sheng Kung Hui Li Ka Shing Day Care Centre for the Elderly in Sham Shui Po	10,517,000			28,000	10,489,000
(15) Upgrading the provision of hospital beds in Hong Kong Sheng Kung Hui Lam Woo Home for the Elderly	442,000			—	442,000
(16) Upgrading the provision of hospital beds in Hong Kong Sheng Kung Hui Li Ka Shing Care and Attention Home for the Elderly	429,000			—	429,000

# Lotteries Fund

## STATEMENT OF APPROVED GRANTS—continued

## SCHEDULE 1

Descriptions	Approved Commitments	2012–13 Expenditure			Accumulated Expenditure to 31.3.2013	Unspent Balances (N=Not required)
	HKS	Original Estimate HKS	Amended Estimate HKS	Actual HKS	HKS	HKS
(17) Upgrading the provision of hospital beds in Hong Kong Sheng Kung Hui Nursing Home	3,250,000			—	—	3,250,000
	156,448,900	12,943,000	12,943,000	7,636,057	99,382,235	57,066,665
<b>57. Hong Kong Single Parents Association</b>						
Enhanced New Dawn Project from October 2007 to March 2010 in Kowloon City/Yau Tsim Mong/Sham Shui Po	1,845,000	—	—	—	1,506,000	339,000
<b>58. Hong Kong Society for Rehabilitation</b>						
(1) Consultancy fee (Stage 1) for slope investigation and remedial works at Lam Tin Complex	498,000			—	299,200	198,800
(2) Slope upgrading and associated drainage works for Lam Tin Complex in Kwun Tong	4,381,000			—	—	4,381,000
	4,879,000	—	—	—	299,200	4,579,800
<b>59. Hong Kong Society for the Aged</b>		26,017,000	26,017,000			
(1) Renovating, furnishing and equipping SAGE Tung Lin Kok Yuen Home for the Elderly in Tseung Kwan O	8,874,900			4,888,334	6,160,905	2,713,995
(2) Renovating SAGE Madam Ho Sin Hang Home for the Elderly in Pokfulam	11,300,400			7,821,587	7,935,927	3,364,473
(3) Replacing the existing 13-seater private light bus with a new one for Bradbury Home for the Elderly in Aberdeen	626,000			—	605,513	20,487 N
(4) Replacing the existing 7-seater passenger van with a new 14-seater liquefied petroleum gas private light bus for Tsuen Kwai Tsing Integrated Home Care Service for Kwai Tsing Team	685,000			685,000	685,000	—
(5) Replacing the existing 7-seater passenger van with a new 14-seater liquefied petroleum gas private light bus for Tsuen Kwai Tsing Integrated Home Care Service for Tsuen Wan Team	685,000			685,000	685,000	—
(6) Replacing two existing 12-seater private light buses with two new 14-seater liquefied petroleum gas private light buses for Yam Pak Charitable Foundation Day Care Centre for the Elderly	1,429,000			1,429,000	1,429,000	—
(7) Upgrading the provision of hospital beds in Bradbury Home for the Elderly	1,270,000			1,097,600	1,097,600	172,400 N
(8) Upgrading the provision of hospital beds in Kwan Fong Nim Chee Home for the Elderly	1,322,000			1,142,400	1,142,400	179,600 N
(9) Upgrading the provision of hospital beds in Madam Ho Sin Hang Home for the Elderly	1,231,000			1,064,000	1,064,000	167,000 N
(10) Upgrading the provision of hospital beds in Quan Chuen Home for the Elderly	1,270,000			1,097,600	1,097,600	172,400 N
(11) Upgrading the provision of hospital beds in Shek Wai Kok Home for the Elderly	687,000			609,500	609,500	77,500 N
(12) Upgrading the provision of hospital beds in Tung Lin Kok Yuen Home for the Elderly	467,000			414,000	414,000	53,000 N
(13) Purchasing a 15-seater liquefied petroleum gas private light bus for Mrs Wong Yee Jar Jat Memorial Home for the Elderly	855,000			—	—	855,000
(14) Renovating SAGE Kwan Fong Nim Chee Home for the Elderly in Sha Tin	20,541,000			—	—	20,541,000
(15) Renovating, furnishing and equipping for converting home for the aged places into long term care places for Kai Yip Home for the Elderly in Kowloon Bay	6,093,000			30,000	30,000	6,063,000
(16) Purchasing a 15-seater liquefied petroleum gas private light bus for Kai Yip Home for the Elderly	885,000			—	—	885,000
(17) Purchasing a 15-seater liquefied petroleum gas private light bus for Mrs Y K Fung Home for the Elderly	885,000			—	—	885,000

# Lotteries Fund

## STATEMENT OF APPROVED GRANTS—continued

## SCHEDULE 1

Descriptions	Approved Commitments	2012–13 Expenditure			Accumulated Expenditure to 31.3.2013	Unspent Balances (N=Not required)
	HKS	Original Estimate HKS	Amended Estimate HKS	Actual HKS	HKS	HKS
(18) Replacing a vehicle for SAGE Eastern District Day Care Centre for the Elderly	760,000			—	—	760,000
(19) Replacing vehicles for SAGE Hong Kong East Integrated Home Care Services	1,299,000			—	—	1,299,000
(20) Renovating, furnishing and equipping Shek Wai Kok Home for the Elderly in Tsuen Wan	10,090,000			—	—	10,090,000
	71,255,300	26,017,000	26,017,000	20,964,021	22,956,445	48,298,855
<b>60. Hong Kong Society for the Blind</b>		<b>1,538,000</b>	<b>2,013,000</b>			
(1) Renovating the Hong Kong Society for the Blind Yuen Long Home for the Aged Blind	4,852,800			(5,850)	475,266	4,377,534
(2) Carrying out urgent re-roofing works, replacement/installation of air-conditioners for Jockey Club Tuen Mun Home for the Aged Blind	1,664,800			12,090	1,634,800	30,000 N
(3) Repairing drainage and plumbing system and replacing the lifts for the Hong Kong Jockey Club Centre for the Blind (West Wing) in Sham Shui Po	1,943,100			524,892	524,892	1,418,208
(4) Rectifying the exterior wall for the Factory for the Blind in To Kwa Wan	2,058,300			25,500	494,600	1,563,700
(5) Upgrading the provision of hospital beds in Jockey Club Tuen Mun Home for the Aged Blind	1,089,000			882,000	882,000	207,000 N
(6) Upgrading the provision of hospital beds in Yuen Long Home for the Aged Blind	480,000			388,500	388,500	91,500 N
(7) Upgrading the provision of hospital beds in Bradbury Care and Attention Home for the Aged Blind	429,000			—	—	429,000
(8) Renovating Jockey Club Tuen Mun Home for the Aged Blind	2,819,000			—	—	2,819,000
	15,336,000	1,538,000	2,013,000	1,827,132	4,400,058	10,935,942
<b>61. Hong Kong Society for the Deaf</b>						
Renovating the Hong Kong Society for the Deaf Bradbury Special Child Care Centre in Kowloon City	1,736,900	499,000	1,530,000	1,529,762	1,529,762	207,138
<b>62. Hong Kong Society for the Protection of Children</b>		<b>499,000</b>	<b>857,000</b>			
(1) Renovating the Portland Street Day Nursery at Portland Street, Mongkok	1,335,100			—	1,057,459	277,641
(2) Renovating, furnishing and equipping Sze Wu Shu Min Nursery School, Tseung Kwan O	1,598,900			325,372	1,461,617	137,283
(3) Implementing a new human resource management system and a new financial management system under business improvement project	1,688,000			394,280	1,254,854	433,146
(4) Renovating Children's Residential Home in Mong Kok	7,410,000			—	—	7,410,000
	12,032,000	499,000	857,000	719,652	3,773,930	8,258,070
<b>63. Hong Kong Southern District Women's Association</b>						
Fitting out for reprovisioning the Mutual Help Child Care Centre from Wong Chuk Hang Estate to Shek Pai Wan Estate	694,800	—	35,000	—	654,065	40,735
<b>64. Hong Kong Student Aid Society</b>		<b>4,672,000</b>	<b>7,733,000</b>			
(1) Professional fee for carrying out slope stability study for Island Hostel	544,800			—	518,188	26,612
(2) Renovating the Hong Kong Student Aid Society Holland Hostel in Kwun Tong	10,864,000			7,642,050	9,639,928	1,224,072
	11,408,800	4,672,000	7,733,000	7,642,050	10,158,116	1,250,684

# Lotteries Fund

## STATEMENT OF APPROVED GRANTS—continued

## SCHEDULE 1

Descriptions	Approved Commitments	2012–13 Expenditure		Accumulated Expenditure to 31.3.2013	Unspent Balances (N=Not required)
	HKS	Original Estimate HKS	Amended Estimate HKS	Actual HKS	HKS
<b>65. Hong Kong Tin Shui Wai Women Association</b>					
Fitting out the new mutual help child care centre at Tin Yuet Estate, Tin Shui Wai	639,800	—	86,000	82,820	630,400
					9,400 N
<b>66. Hong Kong Tuberculosis, Chest and Heart Diseases Association</b>		648,000	648,000		
(1) Upgrading the provision of hospital beds in Freni Care and Attention Home	648,000			594,800	594,800
(2) Upgrading the provision of hospital beds in Freni Care and Attention Home	936,000			—	—
	1,584,000	648,000	648,000	594,800	594,800
					936,000
					989,200
<b>67. Hong Kong Women Foundation Limited</b>					
Renovating the Ho Kwok Pui Chun Social Centre for the Elderly in Central	1,044,500	—	—	—	963,885
					80,615
<b>68. Hong Kong Young Women's Christian Association</b>		11,113,000	11,113,000		
(1) Renovating the Wan Wah Care and Attention Home for the Elderly	11,218,000			—	10,048,181
(2) Carrying out a business improvement project to implement a service and membership management system	1,421,500			—	1,195,700
(3) Renovating the Kowloon City Integrated Home Care Services Team	1,423,900			—	1,215,188
(4) Fitting out the additional premises of Cheung Ching Neighbourhood Elderly Centre at Cheung Ching Estate, Tsing Yi	2,466,500			193,600	2,466,500
(5) Renovating the Ellen Li District Elderly Community Centre in Fanling	1,378,600			—	962,257
(6) Fitting out the additional premises of Ming Yue District Elderly Community Centre in Sai Wan Ho	1,257,700			—	1,144,148
(7) Fitting out for reprovisioning Tai O Community Work Office to Lung Tin Estate, Tai O, Lantau Island	1,294,300			117,360	1,050,060
(8) Renovating, furnishing and equipping the Cheng Pon Hing Hostel for the Elderly at Lei Tung Estate, Ap Lei Chau	13,893,300			4,115,410	4,727,558
(9) Replacing the chiller system for Chi Po Neighbourhood Elderly Centre and Jockey Club Sham Shui Po Integrated Social Service Centre in Sham Shui Po	1,713,000			—	—
(10) Replacing the existing 7-seater private car with a new 14-seater liquefied petroleum gas private light bus for YWCA Ming Yue District Elderly Community Centre Integrated Home Care Services Team in Eastern District	792,000			—	—
(11) Fitting out the additional premises of YWCA Kwun Lung Lau Community Work Office in Kennedy Town	892,000			—	—
(12) Renovating, furnishing and equipping Tai Hon Fan Nursery School in Central	2,355,000			—	—
(13) Upgrading the provision of hospital beds in Hong Kong Young Women's Christian Association Wan Wah Care and Attention Home for the Elderly	1,729,000			—	—
(14) Purchasing a 14-seater liquefied petroleum gas private light bus for Sham Shui Po Integrated Home Care Services Team	800,000			—	—
	42,634,800	11,113,000	11,113,000	4,426,370	22,809,592
					19,825,208
<b>69. Housing Department</b>		20,698,000	31,844,000		
(1) Fitting out welfare projects in various housing estates by the main contractors	94,361,000			—	68,243,562
(2) Fitting out the Po Leung Kuk Dorothy Lee Creche at Kwong Tin Estate	580,000			—	—
					580,000

# Lotteries Fund

## STATEMENT OF APPROVED GRANTS—continued

## SCHEDULE 1

Descriptions	Approved Commitments	2012–13 Expenditure		Accumulated Expenditure to 31.3.2013	Unspent Balances (N=Not required)	
	HKS	Original Estimate HKS	Amended Estimate HKS	Actual HKS	HKS	
(3) Fitting out the Pok Oi Hospital Care and Attention Home at Tin Shui Estate	9,295,000			—	8,907,197	387,803
(4) Reprovisioning the Boys' & Girls' Clubs Association of Hong Kong Shek Yam Children's Centre cum study and reading room under the Comprehensive Redevelopment Programme	2,213,000			—	1,204,356	1,008,644 N
(5) Reprovisioning the Society for the Rehabilitation of Offenders Nap Kay Ex-prisoners Hostel under the Comprehensive Redevelopment Programme	1,822,000			—	1,004,872	817,128
(6) Reprovisioning the Yan Chai Hospital Ju Ching Chu Day Nursery under the Comprehensive Redevelopment Programme	1,178,000			—	1,130,612	47,388
(7) Fitting out the Caritas-Hong Kong Home Help Centre at Tsz Ching Estate	2,970,000			—	2,726,135	243,865
(8) Fitting out the Hong Kong Federation of Youth Groups Children and Youth Centre cum study/reading room at Chung On Estate by New Works Section	2,055,000			—	1,275,651	779,349
(9) Fitting out the Po Leung Kuk Social Centre for the Elderly at Sau Mau Ping Estate by New Works Section	1,673,000			—	1,247,172	425,828
(10) Fitting out a social centre for the elderly at Kwai Fong Estate	774,000			—	602,745	171,255
(11) Fitting out a children and youth centre cum study/reading room at Tung Chung Area 10, Commercial Complex, Lan Tau Island by New Works Section	1,600,000			—	1,597,101	2,899
(12) Fitting out a day nursery at Tung Chung Area 10, Commercial Complex, Lan Tau Island by New Works Section	1,193,000			—	1,182,813	10,187
(13) Fitting out the Haven of Hope Christian Service Social Centre for the Elderly at Sheung Tak Estate, Sai Kung by New Works Section	782,500			—	773,685	8,815 N
(14) Fitting out the Salvation Army Day Nursery-cum-Creche at Pak Tin Estate Redevelopment Phase II	2,460,000			—	1,492,012	967,988
(15) Carrying out construction works for 6 welfare projects at Tak Tin Development at Lam Tin	79,991,000			—	77,595,876	2,395,124
(16) Fitting out the day nursery at Tong Ming Court by New Works Section	1,495,600			—	1,466,000	29,600
(17) Fitting out the day nursery at Kwai Shing East, Phase 2 by New Works Section	2,347,600			—	2,076,673	270,927
(18) Fitting out the children and youth centre cum study/reading room at Tong Ming Court by New Works Section	2,075,000			—	2,034,000	41,000
(19) Fitting out the children and youth centre cum study/reading room at Ma Hang, Phase 3 by New Works Section	5,095,000			—	4,015,517	1,079,483
(20) Fitting out the day nursery at Shek Yam Estate, Phase 2 by New Works Section	2,539,600			—	2,028,735	510,865
(21) Fitting out the day nursery at Tin Shui Wai Area 31, Phase 4 by New Works Section	3,334,000			—	2,859,152	474,848
(22) Fitting out a half-way house for discharged mental patients at Fanling Area 49A by New Works Section	1,292,600			—	1,292,599	1
(23) Fitting out the children and youth centre cum study/reading room at Tuen Mun Area 29, Phase 2 by New Works Section	10,090,200			—	3,555,200	6,535,000
(24) Fitting out the day nursery at Tin Shui Wai Area 3 Phase 5 by New Works Section	1,865,100			—	1,228,700	636,400
(25) Fitting out the day nursery at Tin Shui Wai Area 102	4,597,000			—	3,894,110	702,890
(26) Fitting out the day nursery at Upper Wong Tai Sin Estate Phase 1	2,829,419			—	2,264,852	564,567 N

# Lotteries Fund

## STATEMENT OF APPROVED GRANTS—continued

## SCHEDULE 1

Descriptions	Approved Commitments	2012–13 Expenditure		Accumulated Expenditure to 31.3.2013	Unspent Balances (N=Not required)	
	HK\$	Original Estimate HK\$	Amended Estimate HK\$	Actual HK\$	HK\$	
(27) Fitting out the day nursery at Tsz Ching Estate Phase 2	3,426,825			—	1,495,477	1,931,348 N
(28) Fitting out the day nursery at Tung Chung Area 30	2,219,000			—	1,887,539	331,461
(29) Fitting out the integrated team at Tsz Ching Estate Phase 2	4,717,000			—	1,531,847	3,185,153 N
(30) Fitting out the integrated team at Tin Shui Wai Area 102	5,543,000			—	4,927,918	615,082
(31) Fitting out the integrated team at Tuen Mun Area 52	5,688,000			—	3,296,700	2,391,300
(32) Fitting out the integrated team at Shatin Area 14B	3,332,000			—	2,308,899	1,023,101
(33) Fitting out the social centre for the elderly at Shatin Area 14B	840,000			—	839,982	18
(34) Fitting out the halfway house at Upper Wong Tai Sin Phase 4	8,735,440			—	8,710,259	25,181 N
(35) Fitting out the day nursery at Tin Shui Wai Area 101, Public Housing Estate, Phase 3	4,587,000			—	2,721,388	1,865,612
(36) Fitting out the day nursery at Tin Shui Wai Area 110, Public Housing Estate, Phase 3	3,742,000			—	3,235,334	506,666
(37) Fitting out the integrated team at Ko Chiu Road, Public Housing Estate, Phase 5	3,118,000			—	3,054,527	63,473
(38) Constructing cost for a 200-place residential care home for the elderly, a social centre for the elderly, a day care centre for the elderly and an integrated team at Lei Muk Shue Phase 4	50,989,000			—	28,954,374	22,034,626 N
(39) Meeting the construction cost of a residential care home for the elderly at Kwai Chung Public Housing Estate Phase 4 Redevelopment Project	25,896,000			—	11,903,699	13,992,301 N
(40) Fitting out the day nursery at Public Housing Estate, Upper Ngau Tau Kok Phase 1	4,030,290			—	1,419,743	2,610,547 N
(41) Constructing a 140-place residential care home for the elderly cum a 20-place day care unit at Fu Cheong Estate	24,754,000			—	23,715,130	1,038,870
(42) Constructing a 150-place residential care home for the elderly at Un Chau Street Phase 4 Community Centre Site	24,621,000			—	18,619,737	6,001,263
(43) Fitting out a day nursery at Tseung Kwan O Area 73A	2,101,000			—	1,979,951	121,049
(44) Fitting out a special child care centre cum early education and training centre at Tung Chung Area 31	3,538,000			—	3,528,537	9,463
(45) Constructing a residential care home for the elderly at Shun Lee Cinema Site Kwun Tong	28,936,000			—	26,403,170	2,532,830 N
(46) Constructing an integrated children and youth services centre and an integrated family services centre at a government complex in Aldrich Bay Reclamation Area	28,310,000			—	16,472,929	11,837,071
(47) Constructing a 100-place residential care home for the elderly cum 20-place day care unit at Shek Kip Mei Estate Phase 2	43,840,000			450,617	26,939,532	16,900,468
(48) Constructing a 150-place residential care home for the elderly at the site of ex-Cheung Sha Wan Police Quarters in Sham Shui Po	47,404,000			13,120,389	31,945,182	15,458,818
(49) Constructing a 100-place residential care home for the elderly in Sha Tin Area 52	26,656,000			10,196,639	11,439,289	15,216,711
(50) Constructing a 100-place residential care home for the elderly in a public housing estate development in Tung Chung Area 56	46,861,000			1,181,542	1,181,542	45,679,458
	644,393,174	20,698,000	31,844,000	24,949,187	434,212,012	210,181,162
<b>70. Improvement Programme of Elderly Centres</b>		—	9,319,000			
(1) Renovating Hong Kong Christian Service Wan Hon District Elderly Community Centre	5,007,000			—	—	5,007,000



# Lotteries Fund

## STATEMENT OF APPROVED GRANTS—continued

## SCHEDULE 1

Descriptions	Approved Commitments	2012-13 Expenditure		Accumulated Expenditure to 31.3.2013	Unspent Balances (N=Not required)	
	HKS	Original Estimate HKS	Amended Estimate HKS	Actual HKS	HKS	
(2) Renovating Neighbourhood Advice-Action Council Sham Shui Po District Elderly Community Centre cum Integrated Home Care Services Team	5,795,000			—	—	5,795,000
(3) Renovating, furnishing and equipping Lei Fook Neighbourhood Elderly Centre in Ap Lei Chau	2,564,000			—	—	2,564,000
(4) Renovating Caritas District Elderly Centre - Yuen Long	4,636,000			—	—	4,636,000
(5) Renovating Chuk Yuen Canon Martin District Elderly Community Centre	4,636,000			—	—	4,636,000
(6) Renovating Chan Hing Social Service Centre	4,636,000			—	—	4,636,000
(7) Renovating International Women's League Social Centre for the Elderly	2,958,000			—	—	2,958,000
(8) Renovating, furnishing and equipping the Yuen Yuen Institute Fanling Social Service Centre	1,796,000			20,000	20,000	1,776,000
(9) Renovating, furnishing and equipping Asbury Methodist Social Service Social Centre for the Elderly	2,535,000			—	—	2,535,000
(10) Renovating Ching Chung Taoist Association of Hong Kong Limited Rev. Hau Po Woon Social Centre for the Elderly	2,465,000			—	—	2,465,000
(11) Improvement works for Salvation Army Tai Po Integrated Services for Senior Citizens Tai Po Multi-service Centre for Senior Citizens	5,007,000			—	—	5,007,000
(12) Renovating, furnishing and equipping The Endeavourers, Hong Kong Bert James Young Social Centre for the Elderly	2,535,000			88,840	88,840	2,446,160
(13) Fitting out for reprovisioning Caritas Sha Tin Elderly Centre	3,519,000			—	—	3,519,000
(14) Improvement works for Caritas Kwun Tong Elderly Centre	3,519,000			—	—	3,519,000
(15) Improvement works for Yan Chai Hospital Mrs Tsang Wing Neighbourhood Elderly Centre	3,519,000			—	—	3,519,000
(16) Improvement works for Chinese Young Men's Christian Association of Hong Kong Tin Ping Neighbourhood Elderly Centre	2,112,000			—	—	2,112,000
(17) Improvement works, furnishing and equipping Baptist Oi Kwan Social Service Lai Yiu Neighbourhood Elderly Centre	3,619,000			—	—	3,619,000
(18) Improvement works for Po Leung Kuk Vicwood K.T. Chong Neighbourhood Elderly Centre	2,464,000			—	—	2,464,000
(19) Improvement works for Jordan Valley Kaifong Welfare Association Choi Ha Social Centre for the Elderly	2,219,000			—	—	2,219,000
(20) Improvement works for Hong Kong Mutual Encouragement Association Limited Jane Shu Tsao Social Centre for the Elderly	2,465,000			—	—	2,465,000
(21) Improvement works for the Chinese Rhenish Church - Hong Kong Synod Wo Che Rhenish Social Centre for the Elderly	1,479,000			—	—	1,479,000
(22) Improvement works for Chung Sing Benevolent Society Gan Low Khoon Choo Social Centre for the Elderly	1,972,000			—	—	1,972,000
(23) Improvement works for Hong Kong Society for the Aged Chan Tseng Hsi Kwai Chung District Elderly Community Centre	6,954,000			—	—	6,954,000
(24) Improvement works for Hong Kong Society for the Aged Rotary Club of Hong Kong Northwest Neighbourhood Elderly Centre	2,464,000			—	—	2,464,000
(25) Improvement works for Hong Kong Society for the Aged Kwai Hing Neighbourhood Elderly Centre	2,464,000			—	—	2,464,000
(26) Improvement works, furnishing and equipping for Free Methodist Church of Hong Kong Bradbury Chuk Yuen Social Service Centre	2,042,000			—	—	2,042,000
(27) Improvement works for Hong Kong Mutual Encouragement Association Limited Cheng Yu Tung Social Centre for the Elderly	2,219,000			—	—	2,219,000

# Lotteries Fund

## STATEMENT OF APPROVED GRANTS—continued

## SCHEDULE 1

Descriptions	Approved Commitments	2012-13 Expenditure			Accumulated Expenditure to 31.3.2013	Unspent Balances (N=Not required)
	HK\$	Original Estimate HK\$	Amended Estimate HK\$	Actual HK\$	HK\$	HK\$
(28) Improvement works for Po Leung Kuk Mrs Maria Cheung Lifelong Learning Institute for the Senior	2,465,000			—	—	2,465,000
(29) Improvement works for ELCHK, Social Service Head Office Lutheran Healthy Aging Club	2,219,000			—	—	2,219,000
(30) Improvement works for Hong Kong Sheng Kung Hui Welfare Council Holy Carpenter Church District Elderly Community Centre	5,795,000			—	—	5,795,000
(31) Improvement works for Hong Kong Sheng Kung Hui Welfare Council Western District Elderly Community Centre	5,795,000			—	—	5,795,000
	103,874,000	—	9,319,000	108,840	108,840	103,765,160
<b>71. International Social Service (Hong Kong Branch)</b>		—	59,000			
(1) Enhanced New Dawn Project from October 2007 to March 2010 in Yuen Long/Tin Shui Wai	1,845,000			(1,080,089)	425,911	1,419,089
(2) Fitting out the Cross-border and Inter-country Casework Service Centre in Sheung Shui	586,100			54,534	578,733	7,367 N
	2,431,100	—	59,000	(1,025,555)	1,004,644	1,426,456
<b>72. Kiangsu Chekiang and Shanghai Residents (Hong Kong) Association</b>		999,000	999,000			
(1) Upgrading the provision of hospital beds in Kwai Tsing Hostel for the Elderly	467,000			324,000	324,000	143,000 N
(2) Upgrading the provision of hospital beds in Tuen Mun Hostel for the Elderly	532,000			369,000	369,000	163,000 N
	999,000	999,000	999,000	693,000	693,000	306,000
<b>73. Kowloon Women's Welfare Club</b>		388,000	780,000			
(1) Renovating, furnishing and equipping the Wong Cheung Kin Memorial Hostel for the Elderly at Shun Tin Estate	2,391,600			—	2,144,441	247,159
(2) Replacing the existing 12-seater private light bus with a new 14-seater liquefied petroleum gas private light bus for Wong Cheung Kin Memorial Hostel for the Elderly	780,000			779,823	779,823	177 N
	3,171,600	388,000	780,000	779,823	2,924,264	247,336
<b>74. Lam Tin Estate Kai Fong Welfare Association Limited</b>						
Renovating a social centre for the elderly at Kwong Tin Estate, Lam Tin	2,375,600	—	2,205,000	2,045,445	2,045,445	330,155
<b>75. Lok Sin Tong Benevolent Society, Kowloon</b>		300,000	834,000			
(1) Renovating the Lok Sin Tong Chu Ting Cheong Home for the Aged	5,288,000			188,312	5,210,998	77,002 N
(2) Replacing the existing 12-seater private light bus with a new 11-seater liquefied petroleum gas private light bus for Lok Sin Tong Chu Ting Cheong Home for the Aged	700,000			—	—	700,000
(3) Fitting out a residential care home for the elderly in Tai Kok Tsui	18,963,000			—	—	18,963,000
(4) Furnishing and equipping a residential care home for the elderly in Tai Kok Tsui	2,701,000			—	—	2,701,000
	27,652,000	300,000	834,000	188,312	5,210,998	22,441,002
<b>76. Lotus Association of Hong Kong</b>						
Purchasing a 21-seater private bus for Chi Yan School in Sham Shui Po	792,000	792,000	792,000	791,233	791,233	767 N

# Lotteries Fund

## STATEMENT OF APPROVED GRANTS—continued

## SCHEDULE 1

Descriptions	Approved Commitments	2012-13 Expenditure			Accumulated Expenditure to 31.3.2013	Unspent Balances (N=Not required)
	HKS	Original Estimate HKS	Amended Estimate HKS	Actual HKS	HKS	HKS
<b>77. Mary Rose School</b>						
Purchasing a 50-seater private bus for Mary Rose School	1,181,000	590,000	1,112,000	1,090,483	1,090,483	90,517
<b>78. Mental Health Association of Hong Kong</b>		1,729,000	4,229,000			
(1) Constructing, furnishing and equipping a multi-service centre in Kwun Tong	32,800,600			—	29,495,188	3,305,412
(2) Enhanced New Dawn Project from October 2007 to March 2010 in Sha Tin/Tai Po and North	1,845,000			—	1,506,000	339,000
(3) Replacing personal computers for non-governmental organisations in the social welfare sector	801,000			694,853	694,853	106,147
(4) Fitting out for setting up an Integrated Community Centre for Mental Wellness in Kwun Tong	3,175,000			1,917,712	1,917,712	1,257,288
	38,621,600	1,729,000	4,229,000	2,612,565	33,613,753	5,007,847
<b>79. Methodist Epworth Village Community Centre - Social Welfare (Methodist Church, Hong Kong)</b>						
Replacing the existing 7-seater private car with a 13-seater private light bus for Epworth Integrated Home Care Service Team in Chai Wan	622,500	623,000	623,000	622,485	622,485	15
<b>80. Modernisation Programme of Integrated Children and Youth Services Centres</b>		1,785,000	3,506,000			
(1) Renovating, furnishing and equipping the HK Federation of Youth Groups - Kin Sang Youth S.P.O.T.	2,420,000			—	2,401,873	18,127 N
(2) Renovating, furnishing and equipping the HK Sheng Kung Hui Welfare Council - Shatin Children and Youth Integrated Services Centre	2,420,000			298,166	2,330,116	89,884
(3) Renovating, furnishing and equipping the Chinese Young Men's Christian Association of HK - Lam Tin Centre	2,420,000			—	2,200,848	219,152
(4) Renovating, furnishing and equipping the Neighbourhood Advice-Action Council - Tai Po North Integrated Children and Youth Services Centre	2,420,000			—	2,203,937	216,063
(5) Renovating, furnishing and equipping the Boys' and Girls' Clubs Association of HK - Shek Yam Children and Youth Integrated Services Centre	2,420,000			—	2,169,144	250,856
(6) Renovating, furnishing and equipping the Boys' and Girls' Clubs Association of HK - South Horizon Children and Youth Integrated Services Centre	2,420,000			268,772	2,391,256	28,744 N
(7) Renovating, furnishing and equipping the Boys' and Girls' Clubs Association of HK - South Kwai Chung Children and Youth Integrated Services Centre	2,420,000			—	2,270,350	149,650
(8) Renovating, furnishing and equipping the Boys' and Girls' Clubs Association of HK - Tai Wai Children and Youth Integrated Services Centre	2,420,000			—	2,091,838	328,162
(9) Renovating, furnishing and equipping the Boys' and Girls' Clubs Association of HK - Tsz Wan Shan Children and Youth Integrated Services Centre	2,420,000			—	2,280,137	139,863
(10) Renovating, furnishing and equipping the Boys' and Girls' Clubs Association of HK - Tuen Mun Children and Youth Integrated Services Centre	2,420,000			334,966	2,367,220	52,780 N
(11) Renovating, furnishing and equipping the Boys' and Girls' Clubs Association of HK - Wah Fu Children and Youth Integrated Services Centre	2,420,000			93,473	2,358,877	61,123
(12) Renovating, furnishing and equipping the Chinese Young Men's Christian Association of HK - Chai Wan Centre	2,420,000			235,550	2,417,393	2,607 N
(13) Renovating, furnishing and equipping the Chinese Young Men's Christian Association of HK - Kwun Tong Centre	2,190,000			—	1,981,891	208,109
(14) Renovating, furnishing and equipping the HK Federation of Youth Groups - Cheung Wah Youth S.P.O.T.	2,420,000			138,348	2,388,270	31,730 N

# Lotteries Fund

## STATEMENT OF APPROVED GRANTS—continued

## SCHEDULE 1

Descriptions	Approved Commitments	2012-13 Expenditure		Accumulated Expenditure to 31.3.2013	Unspent Balances (N=Not required)	
	HKS	Original Estimate HKS	Amended Estimate HKS	Actual HKS	HKS	
(15) Renovating, furnishing and equipping the HK Federation of Youth Groups - Farm Road Youth S.P.O.T.	2,420,000			—	2,136,937	283,063
(16) Renovating, furnishing and equipping the HK Federation of Youth Groups - Verbena Heights Youth S.P.O.T.	2,420,000			—	2,151,013	268,987
(17) Renovating, furnishing and equipping the HK Playground Association - Tsz Wan Shan/King Fu Integrated Service for Children and Youth	1,960,000			—	1,954,660	5,340 N
(18) Renovating, furnishing and equipping the HK Young Women's Christian Association - Lok Wah Integrated Social Service Centre	2,420,000			—	2,132,395	287,605
(19) Renovating, furnishing and equipping the HK Young Women's Christian Association - Tin Shui Wai Integrated Social Service Centre	2,420,000			—	2,419,531	469 N
(20) Renovating, furnishing and equipping the HK Young Women's Christian Association - Tsing Yi Integrated Social Service Centre	2,420,000			228,195	2,420,000	—
(21) Renovating, furnishing and equipping the Boys' and Girls' Clubs Association of HK - Tseung Kwan O Children and Youth Integrated Services Centre	2,420,000			—	2,133,408	286,592
(22) Renovating, furnishing and equipping the Boys' and Girls' Clubs Association of HK - Ma On Shan Children and Youth Integrated Services Centre	2,420,000			—	2,271,044	148,956
(23) Renovating, furnishing and equipping the Chinese Young Men's Christian Association of HK - Jordan Centre	2,420,000			—	2,130,949	289,051
(24) Renovating, furnishing and equipping the Chinese Young Men's Christian Association of HK - Tin Shui Wai Centre	2,420,000			278,919	2,419,751	249
(25) Renovating, furnishing and equipping the HK Federation of Youth Groups - Tin Yuet Youth S.P.O.T.	2,420,000			—	2,193,462	226,538
(26) Renovating, furnishing and equipping the Boys' and Girls' Clubs Association of Hong Kong - Yau Tong Children and Youth Integrated Services Centre	2,500,000			130,411	2,478,637	21,363 N
(27) Renovating, furnishing and equipping the Hong Kong Sheng Kung Hui Tuen Mun Integrated Services Centre	2,500,000			—	2,385,800	114,200 N
(28) Renovating, furnishing and equipping the Yan Oi Tong Tin Ka Ping Integrated Children and Youth Service Centre	2,500,000			—	1,882,560	617,440
	67,310,000	1,785,000	3,506,000	2,006,800	62,963,297	4,346,703
<b>81. Modernisation Programme of Youth Service Units and Community Centres</b>		<b>20,862,000</b>	<b>31,140,000</b>			
(1) Renovating, furnishing and equipping the American Baptist Mission Hong Kong Swatow Baptist Church Community Service Association Fung Tak Integrated Children and Youth Services	4,600,000			—	3,931,318	668,682
(2) Renovating, furnishing and equipping the Association of Baptists for World Evangelism (HK) Limited Shing Yan Christian Social Service Centre	4,600,000			—	4,173,361	426,639
(3) Renovating, furnishing and equipping the Asbury Methodist Social Service Integrated Children and Youth Services Centre	4,160,000			523,207	4,160,000	—
(4) Renovating, furnishing and equipping the Boys' and Girls' Clubs Association of Hong Kong Mei Foo Children and Youth Integrated Services Centre	6,084,000			331,790	5,968,037	115,963 N
(5) Renovating, furnishing and equipping the Baptist Oi Kwan Social Service Centre Wan Chai Integrated Children and Youth Services Centre	4,600,000			—	4,216,288	383,712
(6) Renovating, furnishing and equipping the Evangelical Lutheran Church Social Service North District Integrated Youth Service Centre	4,600,000			—	3,994,240	605,760
(7) Renovating, furnishing and equipping the Evangelical Lutheran Church Social Service Sheung Tak Integrated Youth Service Centre	4,600,000			—	4,037,777	562,223

# Lotteries Fund

## STATEMENT OF APPROVED GRANTS—continued

## SCHEDULE 1

Descriptions	Approved	2012–13 Expenditure		Accumulated	Unspent	
	Commitments	Original	Amended	Expenditure	Balances	
	HKS	Estimate	Estimate	to 31.3.2013	(N=Not required)	
		HKS	HKS	HKS	HKS	
(8) Renovating, furnishing and equipping the Evangelical Lutheran Church Social Service Tai Wo Integrated Youth Service Centre	4,550,000			—	3,833,730	716,270
(9) Renovating, furnishing and equipping the Evangelical Lutheran Church Social Service Tin Shui Wai Integrated Youth Service Centre	4,600,000			—	3,585,005	1,014,995
(10) Renovating, furnishing and equipping the Evangelical Lutheran Church Social Service Tuen Mun Integrated Youth Service Centre	4,600,000			240,000	4,036,349	563,651
(11) Renovating, furnishing and equipping the Free Methodist Church of Hong Kong Tuen Mun Integrated Children and Youth Services Centre	4,600,000			—	4,326,176	273,824
(12) Renovating, furnishing and equipping the Hong Kong Christian Service Kwun Tong Integrated Children and Youth Service	4,600,000			62,916	3,882,235	717,765
(13) Renovating, furnishing and equipping the Hong Kong Christian Service Sham Shui Po Central Integrated Children and Youth Service	4,600,000			—	4,036,811	563,189
(14) Renovating, furnishing and equipping the Hong Kong Christian Service North Point Integrated Children and Youth Service	4,600,000			1,114,651	4,597,118	2,882 N
(15) Renovating, furnishing and equipping the Hong Kong Christian Service Sham Shui Po East Integrated Children and Youth Service	4,600,000			—	4,044,017	555,983
(16) Renovating, furnishing and equipping the Hong Kong-Macao Conference of Seventh-Day Adventists Shan King Integrated Children and Youth Services Centre	4,600,000			511,404	4,438,141	161,859 N
(17) Renovating, furnishing and equipping the Kwun Tong Methodist Social Service Ngau Tau Kok Integrated Services Centre	6,092,000			4,050	5,769,857	322,143
(18) Renovating, furnishing and equipping the Methodist Epworth Village Community Centre Epworth Integrated Youth Team	4,600,000			—	4,183,908	416,092
(19) Renovating, furnishing and equipping the Salvation Army Chai Wan Integrated Service for Young People	4,600,000			—	3,904,719	695,281
(20) Renovating, furnishing and equipping the Salvation Army Tuen Mun (East) Integrated Service for Young People	4,600,000			—	4,205,114	394,886
(21) Renovating, furnishing and equipping the Salvation Army Yau Ma Tei Integrated Service for Young People	4,600,000			—	3,886,739	713,261
(22) Renovating, furnishing and equipping the Salvation Army Tuen Mun Integrated Service for Young People	4,600,000			—	4,234,537	365,463
(23) Renovating, furnishing and equipping the Salvation Army Tai Po Integrated Service for Young People	4,160,000			—	3,852,514	307,486
(24) Renovating, furnishing and equipping the Youth Online-Steward Integrated Centre for Youth Development	4,600,000			121,040	4,208,537	391,463
(25) Renovating, furnishing and equipping the Yang Memorial Social Service Ho Man Tin Integrated Centre for Youth Development	4,600,000			—	4,338,050	261,950
(26) Renovating, furnishing and equipping the Yang Memorial Methodist Social Service Sha Tin Integrated Centre for Youth Development	4,600,000			—	3,421,919	1,178,081
(27) Renovating, furnishing and equipping the Zion Social Service Limited Zion Integrated Children and Youth Services Centre	4,600,000			—	3,559,300	1,040,700
(28) Renovating, furnishing and equipping the Boys' and Girls' Clubs Association of Hong Kong Kornhill Children Centre	1,890,000			—	1,702,138	187,862
(29) Renovating, furnishing and equipping Hans Andersen Club Limited Diana Boyd Wilson Centre	1,890,000			—	1,696,952	193,048
(30) Renovating, furnishing and equipping the Hong Kong Federation of Youth Groups Tai Po Lions Youth Space for Participation, Opportunities and Training	1,890,000			11,648	1,758,546	131,454

# Lotteries Fund

## STATEMENT OF APPROVED GRANTS—*continued*

## SCHEDULE 1

Descriptions	Approved Commitments	2012–13 Expenditure		Accumulated Expenditure to 31.3.2013	Unspent Balances (N=Not required)	
	HKS	Original Estimate HKS	Amended Estimate HKS	Actual HKS	HKS	
(31) Renovating, furnishing and equipping Tai Hang Residents' Welfare Association-Tai Hang Youth Centre	1,890,000			—	1,714,584	175,416
(32) Renovating, furnishing and equipping the Boys' and Girls' Clubs Association of Hong Kong Lok Man Children and Family Integrated Activity Centre	2,790,000			—	2,624,307	165,693
(33) Renovating, furnishing and equipping the Boys' and Girls' Clubs Association of Hong Kong Shaukeiwan Children Centre	2,790,000			—	2,422,226	367,774
(34) Renovating, furnishing and equipping the Hong Kong Lutheran Social Service-Lutheran Church-Hong Kong Synod Limited Sun Chui Children Centre	2,790,000			—	2,500,560	289,440
(35) Renovating, furnishing and equipping the Hong Kong Federation of Youth Groups Lung Hang Youth Space for Participation, Opportunities and Training	2,790,000			<b>4,736</b>	2,613,336	176,664
(36) Renovating, furnishing and equipping the Hong Kong Buddhist Association Children and Youth Centre	3,250,000			—	2,915,361	334,639
(37) Renovating, furnishing and equipping Stewards Limited Sha Kok Children and Youth Centre	3,250,000			—	2,945,461	304,539
(38) Renovating, furnishing and equipping the Hong Kong Federation of Youth Groups Felix Wong Youth Space for Participation, Opportunities and Training	3,250,000			—	243,392	3,006,608
(39) Renovating, furnishing and equipping the Caritas-Hong Kong and Youth Centre-Cheung Hong	4,140,000			<b>429,144</b>	4,098,916	41,084
(40) Renovating, furnishing and equipping the Chinese Young Men's Christian Association of Hong Kong Siu Sai Wan Centre	4,140,000			<b>1,375,987</b>	3,819,254	320,746
(41) Renovating, furnishing and equipping the Hong Kong Federation of Youth Groups Heng Fa Chuen Youth Space for Participation, Opportunities and Training	4,140,000			—	3,519,740	620,260
(42) Renovating, furnishing and equipping the Hong Kong Federation of Youth Groups Tin Shui Youth Space for Participation, Opportunities and Training	4,140,000			—	3,634,618	505,382
(43) Renovating, furnishing and equipping the Hong Kong Playground Association Hin Keng Children and Youth Centre cum Study Reading Room	4,140,000			—	3,898,666	241,334
(44) Renovating, furnishing and equipping the Hong Kong Playground Association Sai Tso Wan Children and Youth Centre cum Study Reading Room	4,140,000			—	3,903,768	236,232
(45) Renovating, furnishing and equipping the Salvation Army Chuk Yuen Children and Youth Centre	4,140,000			—	3,888,900	251,100
(46) Renovating, furnishing and equipping the Salvation Army Lung Hang Children and Youth Centre	4,140,000			—	3,687,605	452,395
(47) Renovating, furnishing and equipping the Salvation Army Tai Wo Hau Children and Youth Centre	4,140,000			—	3,735,042	404,958
(48) Renovating, furnishing and equipping the Hong Kong Sheng Kung Hui Tung Chung Integrated Services	4,140,000			<b>478,698</b>	4,140,000	—
(49) Renovating, furnishing and equipping the Yan Chai Hospital The 24th Term of Board Social Service Centre	4,140,000			—	3,510,622	629,378
(50) Renovating, furnishing and equipping Hong Kong Young Women's Christian Association Central/Western and Islands District Youth Outreaching Social Work Team	1,410,000			<b>17,158</b>	1,040,930	369,070
(51) Renovating, furnishing and equipping the Boys' and Girls' Clubs Association of Hong Kong Kwun Tong District Youth Outreaching Social Work Team	1,410,000			—	1,339,480	70,520
(52) Renovating, furnishing and equipping the Hong Kong Federation of Youth Groups Wong Tai Sin and Sai Kung District Youth Outreaching Social Work Team	1,410,000			—	136,540	1,273,460
(53) Renovating, furnishing and equipping the Hong Kong Playground Association Yau Tsim Mong District Youth Outreaching Social Work Team	1,410,000			—	1,222,879	187,121

# Lotteries Fund

## STATEMENT OF APPROVED GRANTS—continued

## SCHEDULE 1

Descriptions	Approved Commitments	2012-13 Expenditure		Accumulated Expenditure to 31.3.2013	Unspent Balances (N=Not required)	
	HKS	Original Estimate HKS	Amended Estimate HKS	Actual HKS	HKS	
(54) Renovating, furnishing and equipping Yang Memorial Methodist Social Service Kowloon City District Youth Outreaching Social Work Team	1,410,000			—	1,406,832	3,168 N
(55) Renovating, furnishing and equipping Chinese Young Men's Christian Association of Hong Kong Kwai Tsing and Tsuen Wan Youth Outreaching Social Work Team	1,410,000			—	928,192	481,808
(56) Renovating, furnishing and equipping the Hong Kong Federation of Youth Groups Tsuen Wan and Kwai Ching District Youth Outreaching Social Work Team	1,410,000			—	1,122,461	287,539
(57) Renovating, furnishing and equipping Caritas-Hong Kong District Youth Outreaching Social Work Team in Tuen Mun	1,410,000			—	972,693	437,307
(58) Renovating, furnishing and equipping Hong Kong Christian Service Yuen Long District Youth Outreaching Social Work Team	1,410,000			—	1,131,460	278,540
(59) Renovating, furnishing and equipping ELCHK, Social Service Head Office Tin Shui Wai District Youth Outreaching Social Work Team	1,410,000			—	1,250,931	159,069
(60) Renovating, furnishing and equipping Chinese Young Men's Christian Association of Hong Kong Sha Tin Youth Outreaching Social Work Team	1,410,000			—	1,280,561	129,439
(61) Renovating, furnishing and equipping Hong Kong Children and Youth Services Tai Po District Youth Outreaching Social Work Team	1,410,000			—	1,326,747	83,253
(62) Renovating, furnishing and equipping ELCHK, Social Service Head Office North Point Youth Outreaching Social Work Team	1,410,000			—	1,252,520	157,480
(63) Renovating, furnishing and equipping the Boys' and Girls' Clubs Association of Hong Kong Sham Shui Po District Youth Outreaching Social Work Team	1,410,000			—	1,244,539	165,461
(64) Renovating, furnishing and equipping the Aberdeen Kai Fong Welfare Association Community Centre	11,816,000			—	11,106,115	709,885
(65) Renovating, furnishing and equipping the Caritas-Hong Kong Mok Cheung Sui Kun Community Centre	9,200,000			—	8,081,811	1,118,189
(66) Renovating, furnishing and equipping the Caritas-Hong Kong Caine Road Community Centre	11,816,000			—	9,897,584	1,918,416
(67) Renovating, furnishing and equipping the Caritas-Hong Kong Community Centre in Aberdeen	3,619,000			—	2,474,174	1,144,826
(68) Renovating, furnishing and equipping the Caritas-Hong Kong Ngau Tau Kok Community Centre	9,200,000			<b>444,912</b>	8,418,153	781,847
(69) Renovating, furnishing and equipping the Hong Kong Sheng Kung Hui Welfare Council Lady MacLehose Centre	9,200,000			—	8,510,685	689,315
(70) Renovating, furnishing and equipping the Hong Kong Lutheran Social Service Martha Boss Community Centre Group and Community Work Unit	9,200,000			<b>480,000</b>	4,190,930	5,009,070
(71) Renovating, furnishing and equipping the St. James' Settlement Wan Chai Community Centre	11,816,000			—	10,025,240	1,790,760
(72) Renovating, furnishing and equipping the Mong Kok Kai Fong Association Limited Chan Hing Social Service Centre (Integrated Community Service Division)	9,200,000			<b>474,482</b>	8,444,682	755,318
(73) Renovating, furnishing and equipping the Yan Oi Tong Limited Community Centre	7,979,000			<b>1,422,599</b>	7,974,099	4,901 N
(74) Renovating, furnishing and equipping the Yuen Long Town Hall Management Committee Limited Community Centre	11,816,000			<b>477,902</b>	10,926,246	889,754
	324,858,000	<b>20,862,000</b>	<b>31,140,000</b>	<b>8,526,324</b>	283,506,275	41,351,725
<b>82. Mother Superior of the Congregation of Our Lady of Charity of the Good Shepherd of Angers at Hong Kong</b>		<b>1,344,000</b>	<b>1,344,000</b>			
(1) Renovating the Choi Wan Hostel at Clear Water Bay Road, Kowloon	1,673,700			<b>51,225</b>	1,590,014	83,686

# Lotteries Fund

## STATEMENT OF APPROVED GRANTS—continued

## SCHEDULE 1

Descriptions	Approved Commitments	2012–13 Expenditure			Accumulated Expenditure to 31.3.2013	Unspent Balances (N=Not required)
	HKS	Original Estimate HKS	Amended Estimate HKS	Actual HKS	HKS	HKS
(2) Slope remedial works for Marycove Centre and Our Lady's Hostel at Nam Long Shan Road, Aberdeen	1,416,000			51,300	1,193,647	222,353 N
(3) Renovating the Marycove Centre and our Lady's Hostel	10,034,100			—	6,271,099	3,763,001
	13,123,800	1,344,000	1,344,000	102,525	9,054,760	4,069,040
<b>83. Neighbourhood and Worker's Education Centre Limited</b>		<b>350,000</b>	<b>1,021,588</b>			
(1) Fitting out a new mutual help child care centre at Kwai Fong Estate	1,196,600			—	911,012	285,588
(2) Fitting out a new mutual help child care centre in Cheung On Estate, Tsing Yi	782,000			735,290	735,290	46,710
	1,978,600	350,000	1,021,588	735,290	1,646,302	332,298
<b>84. Neighbourhood Advice-Action Council</b>		<b>33,836,000</b>	<b>64,403,000</b>			
(1) Renovating the Lower Wong Tai Sin Hostel	2,831,400			—	2,123,691	707,709
(2) Fitting out a community rehabilitation day centre at Wu King Estate, Tuen Mun	3,895,000			—	3,894,990	10 N
(3) Furnishing and equipping a community rehabilitation day centre at Wu King Estate, Tuen Mun	2,375,500			—	2,237,392	138,108
(4) Fitting out a new supported hostel for mentally handicapped persons at Shun Lee Estate, Kwun Tong	2,177,100			—	1,991,419	185,681
(5) Fitting out a new integrated rehabilitation services centre at A Kung Kok Shan Road, Sha Tin	33,634,000			—	30,516,788	3,117,212
(6) Furnishing and equipping a new integrated rehabilitation services centre at A Kung Kok Shan Road, Sha Tin	4,733,000			369,754	4,733,000	—
(7) Fitting out a new 40-place day care centre for the elderly at Leung King Estate, Tuen Mun	2,686,200			446,941	2,671,853	14,347 N
(8) Fitting out for reprovisioning the district youth outreaching social work team to Oi Tung Estate, Shau Kei Wan	1,355,400			—	1,184,821	170,579
(9) Purchasing the upgraded furniture and equipment items for residential care home for the elderly and day care centre for the elderly	697,850			—	697,722	128 N
(10) Fitting out a new special child care centre cum early education and training centre at Pok Hong Estate, Sha Tin	3,162,400			—	2,336,260	826,140
(11) Furnishing and equipping a new special child care centre cum early education and training centre at Pok Hong Estate, Sha Tin	790,100			34,019	784,021	6,079
(12) Replacing two existing 7-seater vans with two new 14-seater private light buses for Tuen Mun District Integrated Services Centre for the Elderly	1,484,800			—	1,483,963	837 N
(13) Purchasing a 14-seater private light bus for Wong Tai Sin District Integrated Home Care Services Centre	752,000			—	751,481	519 N
(14) Fitting out a new district support centre for persons with disabilities in Wong Tai Sin	3,565,400			55,847	2,436,472	1,128,928
(15) Furnishing and equipping a new district support centre for persons with disabilities in Wong Tai Sin	420,000			124,228	420,000	—
(16) Fitting out Tuen Mun Integrated Home Care Services Team in Po Tin Estate, Tuen Mun	1,063,000			—	972,791	90,209
(17) Meeting the operating cost to implement a 3-year pilot scheme on home care services for persons with severe disabilities in Tuen Mun	80,991,000			22,219,105	42,092,141	38,898,859
(18) Fitting out a new special child care centre cum early education and training centre in Wong Tai Sin	3,125,800			67,074	2,023,568	1,102,232
(19) Furnishing and equipping a new special child care centre cum early education and training centre in Wong Tai Sin	2,443,500			952,061	1,636,623	806,877
(20) Fitting out the additional premises of Tin Shui Neighbourhood Elderly Centre in Yuen Long	1,441,000			—	1,279,828	161,172



# Lotteries Fund

## STATEMENT OF APPROVED GRANTS—continued

## SCHEDULE 1

Descriptions	Approved Commitments	2012–13 Expenditure			Accumulated Expenditure to 31.3.2013	Unspent Balances (N=Not required)
	HKS	Original Estimate HKS	Amended Estimate HKS	Actual HKS	HKS	HKS
(21) Fitting out the office under the pilot scheme on home care services for persons with severe disabilities in Tuen Mun	1,356,000			504,988	1,031,832	324,168
(22) Renovating, furnishing and equipping Tai Hing Hostel in Tuen Mun	6,182,000			—	—	6,182,000
(23) Renovating Sun Chui Day Creche in Sha Tin	1,284,000			11,169	11,169	1,272,831
(24) Upgrading the provision of hospital beds in Neighbourhood Advice-Action Council Shanghai Fraternity Association Care and Attention Home for the Elderly	545,000			525,000	525,000	20,000 N
(25) Fitting out a new integrated rehabilitation services centre in Kwai Chung	38,560,000			30,822,595	30,822,595	7,737,405
(26) Furnishing and equipping a new integrated rehabilitation services centre in Kwai Chung	5,867,000			—	—	5,867,000
	207,418,450	33,836,000	64,403,000	56,132,781	138,659,420	68,759,030
<b>85. New Life Psychiatric Rehabilitation Association</b>		—	3,106,000			
(1) Renovating the Tuen Mun Long Stay Care Home	6,948,200			268,612	6,739,391	208,809 N
(2) Enhanced New Dawn Project from October 2007 to March 2010 in Wong Tai Sin/Sai Kung/Tseung Kwan O	1,845,000			(295,284)	1,210,716	634,284
(3) Fitting out an integrated community centre for mental wellness at Tin Chak Estate, Tin Shui Wai	3,479,900			203,775	3,479,850	50
(4) Fitting out for setting up a supported hostel for ex-mentally ill persons at Shatin Hospital	14,054,000			2,633,100	2,633,100	11,420,900
(5) Furnishing and equipping for setting up a supported hostel for ex-mentally ill persons at Shatin Hospital	1,078,000			—	—	1,078,000
(6) Fitting out for setting up an Integrated Community Centre for Mental Wellness in Tung Chung	1,197,000			—	—	1,197,000
(7) Fitting out for setting up an Integrated Community Centre for Mental Wellness in Tuen Mun	3,016,000			—	—	3,016,000
(8) Undertaking fire safety/building safety rectification measures to meet the statutory requirements under the Residential Care Homes (Persons with Disabilities) Ordinance for Pok Hong Halfway House	633,000			—	—	633,000
(9) Undertaking fire safety/building safety rectification measures to meet the statutory requirements under the Residential Care Homes (Persons with Disabilities) Ordinance for Chuk Yuen Halfway House	658,000			—	—	658,000
(10) Fitting out for setting up an Integrated Community Centre for Mental Wellness in Sham Shui Po	4,127,000			—	—	4,127,000
(11) Renovating arising from water seepage for Tuen Mun Long Stay Care Home in Tuen Mun	6,434,000			—	—	6,434,000
	43,470,100	—	3,106,000	2,810,203	14,063,057	29,407,043
<b>86. New Territories Association Retraining Centre Limited</b>						
Enhanced New Dawn Project from October 2007 to March 2010 in Tsuen Wan/Kwai Tsing	1,845,000	—	—	(281,162)	1,224,838	620,162 N
<b>87. Pentecostal Church of Hong Kong Limited</b>		5,126,000	8,350,000			
(1) Renovating the Hong Lok Sheltered Workshop in Tuen Mun	2,976,200			1,426	2,667,006	309,194
(2) Renovating the Hong Lok Hostel in Tuen Mun	7,371,000			6,101,567	6,131,567	1,239,433
(3) Fitting out for reprovisioning Ngau Tau Kok Neighbourhood Elderly Centre in Kwun Tong	2,808,300			—	—	2,808,300 N
(4) Renovating, furnishing and equipping Nam Cheong Nursery School in Sham Shui Po	1,224,000			20,138	20,138	1,203,862
(5) Renovating Tai Wo Nursery School in Tai Po	1,616,000			32,556	32,556	1,583,444

# Lotteries Fund

## STATEMENT OF APPROVED GRANTS—continued

## SCHEDULE 1

Descriptions	Approved Commitments	2012–13 Expenditure			Accumulated Expenditure to 31.3.2013	Unspent Balances (N=Not required)
	HKS	Original Estimate HKS	Amended Estimate HKS	Actual HKS	HKS	HKS
(6) Renovating Tseung Kwan O Nursery School in Tseung Kwan O	619,000			14,575	14,575	604,425
	16,614,500	5,126,000	8,350,000	6,170,262	8,865,842	7,748,658
<b>88. Po Leung Kuk</b>		<b>37,246,000</b>	<b>61,946,000</b>			
(1) Meeting the cost of extension of Po Leung Kuk Y.C. Cheng Centre in Tai Wai	16,960,000			—	12,662,982	4,297,018
(2) Renovating, furnishing and equipping the Newcomers Ward at Causeway Bay	3,965,700			—	3,965,388	312 N
(3) Meeting the cost of slope remedial works for Po Leung Kuk Nursery at Leighton Road	662,100			—	417,164	244,936
(4) Fitting out a day rehabilitation service centre and a hostel for severely mentally handicapped at Tin Yan Estate	6,956,100			—	6,608,295	347,805
(5) Fitting out a residential care home for the elderly cum a day care unit at Kwai Shing East Estate, Kwai Chung	30,186,000			—	26,316,858	3,869,142
(6) Purchasing a new school bus for Mr and Mrs Chan Pak Keung Tsing Yi School in Tsing Yi	656,000			—	634,286	21,714 N
(7) Fitting out a residential care home for the elderly cum a day care unit at Tin Yan Estate, Tin Shui Wai, Yuen Long	9,841,300			—	8,895,800	945,500
(8) Renovating the Hin Keng Centre in Sha Tin	3,047,900			2,644,928	2,734,928	312,972
(9) Renovating the Chan Au Big Yan Home for the Elderly at Belcher's Street, Kennedy Town	998,000			411,287	900,428	97,572
(10) Enhanced New Dawn Project from October 2007 to March 2010 in Kwun Tong	1,845,000			—	1,506,000	339,000
(11) Fitting out works for the sub-base of Po Leung Kuk - Lau Chan Siu Po Neighbourhood Elderly Centre	1,807,100			—	1,483,312	323,788
(12) Fitting out works for Po Leung Kuk New Comers' Ward Annex in Sha Tin	2,851,100			—	2,558,475	292,625
(13) Fitting out a residential care home for the elderly at Ko Shing Street, Sheung Wan	9,987,800			—	9,182,700	805,100
(14) Fitting out a new day activity centre cum hostel for the severely mentally handicapped persons at Pokfulam Skills Centre	7,472,600			—	7,098,894	373,706
(15) Fitting out the additional premises of Mrs Chao King Lin Neighbourhood Elderly Centre at Cheung Fat Estate, Tsing Yi	1,685,000			—	1,563,700	121,300
(16) Fitting out a residential care home for the elderly at Kwai Chung Estate, Kwai Chung	15,995,100			—	14,419,100	1,576,000
(17) Fitting out a new refuge centre for women	4,920,700			239,791	4,586,990	333,710
(18) Renovating Po Leung Kuk Y.C. Cheng Centre in Tai Wai	4,621,500			—	—	4,621,500
(19) Fitting out a new special child care centre cum early education and training centre at Chuk Yuen (South) Estate, Wong Tai Sin	4,200,300			—	3,730,650	469,650
(20) Fitting out a new integrated rehabilitation services centre at Kwai Shing Circuit, Kwai Chung	49,158,000			—	46,699,587	2,458,413
(21) Furnishing and equipping a new integrated rehabilitation services centre at Kwai Shing Circuit, Kwai Chung	6,887,000			53,553	6,887,000	—
(22) Fitting out a new victim support programme in Tseung Kwan O	2,271,100			—	2,023,540	247,560
(23) Furnishing and equipping for re-provisioning and in-situ expansion of Tin Chak Hostel in Tin Shui Wai	462,700			65,968	462,700	—
(24) Furnishing and equipping the additional premises for a new integrated vocational rehabilitation services centre in Tin Chak Estate, Tin Shui Wai	401,600			401,600	401,600	—
(25) Furnishing and equipping Siu Ming Memorial Home cum Care and Attention Unit in Kwun Tong	400,200			211,366	211,366	188,834

# Lotteries Fund

## STATEMENT OF APPROVED GRANTS—continued

## SCHEDULE 1

Descriptions	Approved Commitments	2012-13 Expenditure		Accumulated Expenditure to 31.3.2013	Unspent Balances (N=Not required)	
	HKS	Original Estimate HKS	Amended Estimate HKS	Actual HKS	HKS	
(26) Furnishing and equipping a 117-place residential care home for the elderly at Man Tung Road, Tung Chung	2,369,900			43,737	2,369,900	—
(27) Fitting out a 117-place residential care home for the elderly at Man Tung Road, Tung Chung	17,046,000			—	15,424,200	1,621,800
(28) Fitting out Tin Chak Hostel in relation to reprovisioning and in-situ expansion	11,087,000			—	10,532,346	554,654
(29) Fitting out the additional premises for a new integrated vocational rehabilitation services centre at Tin Chak Estate, Tin Shui Wai	4,543,000			1,699,987	3,799,825	743,175
(30) Renovating Siu Ming Memorial Home cum Care and Attention Unit in Kwun Tong	7,161,000			6,649,069	6,649,069	511,931
(31) Fitting out a new district support centre for persons with disabilities in Sha Tin District	3,358,000			3,023,250	3,023,250	334,750
(32) Furnishing and equipping a new district support centre for persons with disabilities in Sha Tin District	420,000			359,550	411,863	8,137
(33) Upgrading the provision of hospital beds in Chan Au Big Yan Home for the Elderly	609,000			539,513	539,513	69,487
(34) Upgrading the provision of hospital beds in Siu Ming Memorial Home cum Care and Attention Unit	765,000			677,261	677,261	87,739
(35) Replacing the existing 14-seater private light bus with a 13-seater liquefied petroleum gas private light bus for 1982 Board of Directors Day Care Centre for the Elderly	719,000			719,000	719,000	—
(36) Fitting out a new 70-place day care centre for the elderly at Pak Tin Estate, Sham Shui Po	5,373,000			4,791,500	4,791,500	581,500
(37) Furnishing and equipping a new 70-place day care centre for the elderly at Pak Tin Estate, Sham Shui Po	3,087,000			3,040,668	3,087,000	—
(38) Upgrading the provision of hospital beds in Po Leung Kuk Wong Chuk Hang Service for the Elderly - 1984 Care and Attention Home cum Madam Aw Tan Kyi Kyi Home for the Aged	506,000			447,681	447,681	58,319
(39) Furnishing and equipping the additional long term care places in Po Leung Kuk Wong Chuk Hang Service for the Elderly - 1984 Care and Attention Home cum Madam Aw Tan Kyi Kyi Home for the Aged	412,000			402,747	411,935	65 N
(40) Renovating the Babies Section in Causeway Bay	1,576,000			—	—	1,576,000
(41) Fitting out a residential care home for the elderly cum day care unit at Cherry Street, Tai Kok Tsui	12,650,000			11,185,000	11,185,000	1,465,000
(42) Furnishing and equipping a residential care home for the elderly cum day care unit at Cherry Street, Tai Kok Tsui	2,075,000			2,033,628	2,033,628	41,372
(43) Furnishing and equipping Merry Court for the Senior in Ho Man Tin	756,000			756,000	756,000	—
(44) Furnishing and equipping Wing Lung Bank Golden Jubilee Sheltered Workshop and Hostel	812,000			812,000	812,000	—
(45) Replacing the existing 56-seater school bus with a 65-seater school bus for Yu Lee Mo Fan Memorial School	1,299,000			—	—	1,299,000
(46) Renovating Merry Court for the Senior in Ho Man Tin	2,276,000			—	—	2,276,000
(47) Replacing the existing 20-seater private bus with a new 29-seater diesel private bus for Mr. and Mrs. Chan Pak Keung Tsing Yi School	1,765,000			—	—	1,765,000
(48) Purchasing a new vehicle for Law's Foundation School	1,013,000			—	—	1,013,000
(49) Fitting out a 93-place residential care home for the elderly cum a 20-place day care unit in Sai Ying Pun	16,154,000			—	—	16,154,000
(50) Furnishing and equipping a 93-place residential care home for the elderly cum a 20-place day care unit in Sai Ying Pun	2,703,000			—	—	2,703,000
(51) Furnishing and equipping Eco-Home for the Senior and Sunny Green Day Care Centre for the Senior in Sham Shui Po	1,410,000			—	—	1,410,000

# Lotteries Fund

## STATEMENT OF APPROVED GRANTS—continued

## SCHEDULE 1

Descriptions	Approved Commitments	2012–13 Expenditure			Accumulated Expenditure to 31.3.2013	Unspent Balances (N=Not required)
	HK\$	Original Estimate HK\$	Amended Estimate HK\$	Actual HK\$	HK\$	HK\$
(52) Upgrading the provision of hospital beds in Po Leung Kuk Wong Chuk Hang Service for the Elderly - 1984 Care and Attention Home cum Madam Aw Tan Kyi Kyi Home for the Aged	455,000			—	—	455,000
	290,639,800	37,246,000	61,946,000	41,209,084	233,622,714	57,017,086
<b>89. Pok Oi Hospital</b>		<b>1,306,000</b>	<b>2,093,000</b>			
(1) Replacing the existing 15-seater private light bus with a new one for Tuen Mun Nursing Home in Tuen Mun	694,000			665,951	665,951	28,049 N
(2) Upgrading the provision of hospital beds in Chan Feng Men Ling Care and Attention Home	687,000			619,040	619,040	67,960 N
(3) Upgrading the provision of hospital beds in Jockey Club Care and Attention Home	959,000			806,600	806,600	152,400 N
(4) Upgrading the provision of hospital beds in Chan Feng Men Ling Care and Attention Home	1,040,000			—	—	1,040,000
(5) Upgrading the provision of hospital beds in Jockey Club Care and Attention Home	585,000			—	—	585,000
(6) Upgrading the provision of hospital beds in Tai Kwan Care and Attention Home	1,079,000			—	—	1,079,000
(7) Upgrading the provision of hospital beds in Yeung Chun Pui Care and Attention Home	897,000			—	—	897,000
(8) Upgrading the provision of hospital beds in Tuen Mun Nursing Home	1,872,000			—	—	1,872,000
	7,813,000	1,306,000	2,093,000	2,091,591	2,091,591	5,721,409
<b>90. Richmond Fellowship of Hong Kong</b>		—	—			
(1) Carrying out a business improvement project to implement a financial management system	457,700			—	402,030	55,670 N
(2) Fitting out for setting up an Integrated Community Centre for Mental Wellness in Chai Wan	2,674,000			—	—	2,674,000
(3) Furnishing and equipping for setting up an Integrated Community Centre for Mental Wellness in Wong Tai Sin	452,000			—	—	452,000
(4) Fitting out an Integrated Community Centre for Mental Wellness in Wong Tai Sin	5,251,000			—	—	5,251,000
(5) Renovating Wan Tsui House in Chai Wan	2,190,000			—	—	2,190,000
(6) Fitting out the additional premises of Integrated Community Centre for Mental Wellness in Wong Tai Sin	538,000			—	—	538,000
	11,562,700	—	—	—	402,030	11,160,670
<b>91. Salvation Army</b>		<b>4,906,000</b>	<b>4,906,000</b>			
(1) Demolishing, constructing and furnishing the Kam Tin Complex at Kam Tin Road, N.T.	74,918,800			—	64,419,949	10,498,851 N
(2) Meeting the cost of transforming Nam Ming Haven for Women into a residential care home for the elderly under service rationalisation exercise	2,813,300			6,106	2,400,713	412,587 N
(3) Fitting out the Chuk Yuen Centre for Senior Citizens at Chuk Yuen Community Centre in Chuk Yuen (South) Estate	714,300			—	597,994	116,306
(4) Enhanced New Dawn Project from October 2007 to March 2010 in Tuen Mun	1,845,000			—	1,506,000	339,000
(5) Renovating the Kwun Tong Integrated Home Care Service Team	783,000			17,500	530,758	252,242
(6) Fitting out the additional premises of Hoi Lam Centre for Senior Citizens at Hoi Fu Court, Mong Kok	427,400			—	376,033	51,367
(7) Purchasing the upgraded furniture and equipment items for residential care homes for the elderly and day care centres for the elderly	1,518,950			5,612	1,513,810	5,140 N

# Lotteries Fund

## STATEMENT OF APPROVED GRANTS—continued

## SCHEDULE 1

Descriptions	Approved Commitments	2012–13 Expenditure		Accumulated Expenditure to 31.3.2013	Unspent Balances (N=Not required)	
	HKS	Original Estimate HKS	Amended Estimate HKS	Actual HKS	HKS	
(8) Renovating the Tin Ping Nursery School in Sheung Shui	661,700			7,020	600,147	61,553
(9) Fitting out for reprovisioning the Bradbury Day Care Centre for senior citizens in Tai Po	3,321,200			—	3,056,172	265,028
(10) Fitting out for reprovisioning the Tai Po Integrated Home Care Service Team in Tai Po	1,856,000			—	1,730,900	125,100
(11) Renovating Yue Wan Boy's Hostel at Yue Wan Estate, Chai Wan	1,736,800			782,267	838,113	898,687
(12) Fitting out for reprovisioning the Wah Fu Centre for senior citizens in Aberdeen	2,551,900			—	1,999,105	552,795
(13) Fitting out the additional premises of Nam Tai Centre for senior citizens in Sham Shui Po	1,465,200			—	1,289,007	176,193
(14) Undertaking fire safety/building safety rectification measures to meet the licensing requirements under the future legislation relating to residential care homes for persons with disabilities for Lai King Home	482,000			168,634	457,720	24,280
(15) Replacing the existing 12-seater private light bus with a new 14-seater liquefied petroleum gas private light bus for Bradbury Home of Loving Kindness	690,000			683,349	683,349	6,651 N
(16) Replacing the existing 16-seater private light bus with a new 16-seater diesel private light bus for Shaukeiwan Community Day Rehabilitation Service	784,000			—	—	784,000
(17) Upgrading the provision of hospital beds in Bradbury Home of Loving Kindness	881,000			—	—	881,000
(18) Upgrading the provision of hospital beds in Hoi Tai Residence for Senior Citizens	583,000			—	—	583,000
(19) Upgrading the provision of hospital beds in Kam Tin Residence for Senior Citizens	959,000			—	—	959,000
(20) Upgrading the provision of hospital beds in Nam Shan Residence for Senior Citizens	622,000			—	—	622,000
(21) Upgrading the provision of hospital beds in Po Lam Residence for Senior Citizens	674,000			—	—	674,000
(22) Upgrading the provision of hospital beds in Tak Tin Residence for Senior Citizens	609,000			—	—	609,000
(23) Replacing the two existing private light buses with two new 14-seater liquefied petroleum gas private light buses for Chuk Yuen Day Care Centre for Senior Citizens	1,489,000			—	—	1,489,000
(24) Renovating Cheung Hong Community Day Rehabilitation and Residential Service in Tsing Yi	6,292,000			—	—	6,292,000
(25) Upgrading the provision of hospital beds in Bradbury Home of Loving Kindness	533,000			—	—	533,000
(26) Upgrading the provision of hospital beds in Hoi Tai Residence for Senior Citizens	494,000			—	—	494,000
(27) Upgrading the provision of hospital beds in Kam Tin Residence for Senior Citizens	715,000			—	—	715,000
(28) Renovating Salvation Army Pak Tin Nursery School and Creche in Sham Shui Po	731,000			—	—	731,000
	111,151,550	4,906,000	4,906,000	1,670,488	81,999,770	29,151,780
<b>92. Scout Association of Hong Kong</b>						
Redevelopment of the Scout Association of Hong Kong Hong Kong Island Regional Headquarters in Wan Chai	166,329,000	—	—	—	—	166,329,000
<b>93. Shatin Women's Association Limited</b>						
Enhanced New Dawn Project from October 2007 to March 2010 in Sha Tin/Tai Po and North	1,845,000	—	—	(163,539)	1,342,461	502,539 N

# Lotteries Fund

## STATEMENT OF APPROVED GRANTS—continued

## SCHEDULE 1

Descriptions	Approved Commitments	2012-13 Expenditure			Accumulated Expenditure to 31.3.2013	Unspent Balances (N=Not required)
	HKS	Original Estimate HKS	Amended Estimate HKS	Actual HKS	HKS	HKS
<b>94. S.K.H. St. Simon's Social Services</b>						
Renovating, furnishing and equipping Hong Kong Sheng Kung Hui St. Simon's Tai Hing Nursery School in Tuen Mun	780,000	—	—	—	—	780,000
<b>95. Sik Sik Yuen</b>		<b>2,605,000</b>	<b>2,605,000</b>			
(1) Constructing, fitting out and equipping a care and attention home, a central administration office and a physiotherapy treatment room in Tsz Wan Shan	52,032,200			—	50,847,437	1,184,763 N
(2) Renovating the Ho Kin District Community Centre for Senior Citizens at Nam Cheong Estate, Sham Shui Po	2,419,800			—	—	2,419,800
(3) Fitting out for reprovisioning the Ho Tai Neighbourhood Centre for senior citizens to Kwong Yuen Estate in Sha Tin	2,722,900			<b>322,618</b>	2,250,104	472,796
(4) Installation of air-conditioning for Ho On Home for the Elderly in Kwai Chung	713,000			—	—	713,000
(5) Upgrading the provision of hospital beds in Ho Cheung Home for the Elderly	752,000			—	—	752,000
(6) Upgrading the provision of hospital beds in Ho Yam Care and Attention Home for the Elderly	1,711,000			—	—	1,711,000
(7) Upgrading the provision of hospital beds in Ho On Home for the Elderly	480,000			—	—	480,000
(8) Upgrading the provision of hospital beds in Ho Yam Care and Attention Home for the Elderly	650,000			—	—	650,000
	61,480,900	<b>2,605,000</b>	<b>2,605,000</b>	<b>322,618</b>	53,097,541	8,383,359
<b>96. Social Welfare Department</b>		<b>195,805,000</b>	<b>245,004,000</b>			
(1) Furnishing the former Chuk Yuen Children's Reception Centre premises to reprovision 4 service units of Social Welfare Department	1,331,500			<b>32,520</b>	1,328,006	3,494 N
(2) Organising a training package for management board members of non-government organisations receiving subventions from Social Welfare Department	460,000			—	313,039	146,961
(3) Disbursing of special one-off grant to 124 non-government organisations after the tide-over grant period	912,448,600			<b>8,117,814</b>	898,931,714	13,516,886
(4) Providing contingencies for a multi-purpose crisis intervention and support centre on a 3-year basis	1,005,400			—	—	1,005,400
(5) Providing additional resources to non-governmental organisations for employing paramedical staff or hiring paramedical services for three years from 2009-10 to 2011-12	278,000,000			—	277,231,800	768,200
(6) Disbursing special one-off block grant to subvented non-governmental organisations for carrying out minor works in 2009-10	79,518,000			<b>(2,066,338)</b>	76,749,694	2,768,306
(7) Providing additional resources for small non-governmental organisations for strengthening administrative and professional support	30,000,000			<b>5,431,800</b>	23,557,200	6,442,800
(8) Setting up the Social Welfare Development Fund	330,000,000			<b>80,642,540</b>	262,894,251	67,105,749
(9) Implementing a pilot bought place scheme for private residential care homes for persons with disabilities	70,187,400			<b>17,002,241</b>	21,156,809	49,030,591
(10) Furnishing and equipping a 93-place residential care home for the elderly cum a 20-place day care unit in Sai Ying Pun	2,703,000			—	—	2,703,000 N
(11) Fitting out a new 93-place residential care home for the elderly cum a 20-place day care unit in Sai Ying Pun	16,154,000			—	—	16,154,000 N
(12) Furnishing and equipping a supported hostel for ex-mentally ill persons in Sha Tin	1,078,000			—	—	1,078,000 N
(13) Fitting out a supported hostel for ex-mentally ill persons in Sha Tin	14,054,000			—	—	14,054,000 N

# Lotteries Fund

## STATEMENT OF APPROVED GRANTS—continued

## SCHEDULE 1

Descriptions	Approved Commitments	2012–13 Expenditure		Accumulated Expenditure to 31.3.2013	Unspent Balances (N=Not required)
	HKS	Original Estimate HKS	Amended Estimate HKS	Actual HKS	HKS
(14) Furnishing and equipping a residential care home for the elderly in Tai Kok Tsui	2,701,000			—	2,701,000 N
(15) Fitting out a new 132-place residential care home for the elderly in Tai Kok Tsui	18,963,000			—	18,963,000 N
(16) Disbursement to private residential care homes for persons with disabilities to implement a Financial Assistance Scheme	39,000,000			—	39,000,000
(17) Fitting out for setting up a new special child care centre cum early education and training centre in Shan King Estate, Tuen Mun	3,639,000			—	3,639,000
(18) Furnishing and equipping for setting up a new special child care centre cum early education and training centre in Shan King Estate, Tuen Mun	943,000			—	943,000
(19) Furnishing and equipping for setting up a new 70-place hostel for moderately mentally handicapped persons in Tuen Mun	735,000			—	735,000
(20) Fitting out a new 70-place hostel for moderately mentally handicapped persons in Tuen Mun	20,269,000			—	20,269,000
(21) Disbursement to 77 non-governmental organisations for employing paramedical staff or hiring paramedic services from 2012-13 to 2014-15	344,000,000			114,431,400	229,568,600
(22) Fitting out for setting up a new day care centre for the elderly in Kwun Tong	3,432,000			—	3,432,000 N
(23) Furnishing and equipping for setting up a new day care centre for the elderly in Kwun Tong	2,149,000			—	2,149,000 N
(24) Fitting out works for setting up a new early education and training centre in Kwun Tong	3,004,000			—	3,004,000
(25) Furnishing and equipping for setting up a new early education and training centre in Kwun Tong	726,000			—	726,000
(26) Furnishing and equipping for setting up a new long stay care home in Tin Shui Wai	1,777,000			—	1,777,000
(27) Fitting out a new long stay care home in Tin Shui Wai	18,902,000			—	18,902,000
(28) Furnishing and equipping a new 100-place residential care home for the elderly cum 30-place day care unit in Tai Wai	3,847,000			—	3,847,000
(29) Furnishing and equipping a new 100-place residential care home for the elderly cum 30-place day care unit in Shek Kip Mei	3,847,000			—	3,847,000
(30) Furnishing and equipping a new 60-place day care centre for the elderly in Kwai Tsing	3,108,000			—	3,108,000
(31) Fitting out for setting up a new early education and training centre in Kwai Chung	3,029,000			—	3,029,000
(32) Furnishing and equipping for setting up a new early education and training centre in Kwai Chung	888,000			—	888,000
(33) Furnishing and equipping a new special child care centre cum early education and training centre in Tai Po	2,158,000			—	2,158,000
(34) Furnishing and equipping for a new 52-place day care centres for the elderly in Kwun Tong	3,054,000			—	3,054,000
(35) Furnishing and equipping for a new 45-place day care centres for the elderly in Sha Tin	2,177,000			—	2,177,000
(36) Constructing an Integrated Family Service Centre, a Day Care Centre for the Elderly, a District Support Centre for Persons with Disabilities and a Special Child Care Centre cum Early Education and Training Centre in the Comprehensive Development Area at ex-North Point Estate	58,090,000			—	58,090,000
(37) Fitting out works for setting up a new special child care centre cum early education and training centre in Tai Po	5,300,000			—	5,300,000
(38) Fitting out for setting up a new day care centre for the elderly in Kwai Tsing	4,909,000			—	4,909,000

# Lotteries Fund

## STATEMENT OF APPROVED GRANTS—continued

## SCHEDULE 1

Descriptions	Approved Commitments	2012–13 Expenditure		Accumulated Expenditure to 31.3.2013	Unspent Balances (N=Not required)
	HKS	Original Estimate HKS	Amended Estimate HKS	Actual HKS	HKS
(39) Fitting out a new residential care home for the elderly cum day care unit in Tai Wai	20,464,000			—	20,464,000
(40) Fitting out a new residential care home for the elderly cum day care unit in Shek Kip Mei	19,536,000			—	19,536,000
(41) Subsidy on the voucher value for implementing the first phase of the Pilot Scheme on Community Care Service Voucher for the Elderly	278,000,000			—	278,000,000
(42) Seed money to eligible recognised service providers for purchase of vehicle and/or furniture and equipment under the Pilot Scheme on Community Care Service Voucher for the Elderly	102,000,000			—	102,000,000
(43) Launching Phase 2 of the Social Welfare Development Fund	330,000,000			—	330,000,000
(44) Fitting out a new day care centre for the elderly in Kwun Tong	4,689,000			—	4,689,000
(45) Fitting out a new day care centre for the elderly in Sha Tin	4,298,000			—	4,298,000
(46) Constructing a 60-place day care centre for the elderly in a Private Residential Development in Tuen Mun	16,550,000			—	16,550,000
(47) Fitting out a new integrated rehabilitation services centre in Shek Kip Mei Estate, Sham Shui Po	23,199,000			—	23,199,000
(48) Furnishing and equipping a new integrated rehabilitation services centre in Shek Kip Mei Estate, Sham Shui Po	4,302,000			—	4,302,000
(49) Fitting out a new day activity centre cum hostel for severely mentally handicapped persons in Tin Ching Estate, Tin Shui Wai	13,993,000			—	13,993,000
(50) Furnishing and equipping a new day activity centre cum hostel for severely mentally handicapped persons in Tin Ching Estate, Tin Shui Wai	3,187,000			—	3,187,000
(51) Carrying out a Technical Feasibility Study for the redevelopment of ex-Kai Nang Sheltered Workshop and Hostel into an Integrated Rehabilitation Services Complex in Kwun Tong	2,690,000			—	2,690,000
(52) Constructing a new contract residential care home for the elderly with a day care unit and a new day care centre for the elderly in Long Ping, Yuen Long	72,720,000			—	72,720,000
	3,183,214,900	195,805,000	245,004,000	223,591,977	1,676,593,913
<b>97. Society for the Aid and Rehabilitation of Drug Abusers</b>		<b>16,015,000</b>	<b>16,015,000</b>		
(1) Reservoirs upgrading works for Shek Kwu Chau Treatment and Rehabilitation Centre in Shek Kwu Chau	30,504,500			9,545,637	13,540,660
(2) Renovating the Shek Kwu Chau Treatment and Rehabilitation Centre	8,673,200			463,725	575,705
	39,177,700	16,015,000	16,015,000	10,009,362	14,116,365
<b>98. Society of Boy's Centres</b>		—	534,000		
(1) Purchasing a new 22-seater private bus for Chak Yan Centre School in Sham Shui Po	535,000			533,906	1,094 N
(2) Replacing a vehicle for Chak Yan Centre School	588,000			—	588,000
	1,123,000	—	534,000	533,906	589,094
<b>99. Society of Rehabilitation and Crime Prevention, Hong Kong</b>		<b>2,734,000</b>	<b>2,734,000</b>		
(1) Fitting out the Court Social Work and Crime Prevention Services Centre at Tai Wo Hau Estate	735,100			673,877	61,223 N
(2) Renovating the Sunrise House in Tin Shui Wai	2,176,300			—	2,176,300
(3) Renovating the Rotary (Lok Fu) Hostel in Lok Fu	1,039,000			—	1,039,000
(4) Fitting out for setting up an Integrated Community Centre for Mental Wellness in a Joint-user Complex at Tin Shui Wai Area 109	4,237,000			—	4,237,000



# Lotteries Fund

## STATEMENT OF APPROVED GRANTS—continued

## SCHEDULE 1

Descriptions	Approved Commitments	2012–13 Expenditure			Accumulated Expenditure to 31.3.2013	Unspent Balances (N=Not required)
	HK\$	Original Estimate HK\$	Amended Estimate HK\$	Actual HK\$	HK\$	HK\$
(5) Renovating the Head Office in Wan Chai	1,980,000			—	—	1,980,000
	10,167,400	2,734,000	2,734,000	673,877	673,877	9,493,523
<b>100. St. James' Settlement</b>		<b>6,221,000</b>	<b>6,221,000</b>			
(1) Renovating, improving the settings on the ground floor of the multi-service community centre in Wan Chai	777,000			—	724,973	52,027
(2) Renovating the main base of St. James' Settlement Wanchai District Elderly Community Centre	2,705,600			439,870	2,564,687	140,913
(3) Fitting out a residential care home for the elderly at Oi Po House, Oi Tung Estate, Shaukeiwan	19,069,000			1,697,316	19,069,000	—
(4) Fitting out for reprovisioning part of the main-base of Causeway Bay Integrated Services Centre	1,294,300			—	1,285,853	8,447 N
(5) Fitting out a new 40-place day care centre for the elderly in Chai Wan	2,527,500			—	2,052,905	474,595
(6) Renovating the St. James' Settlement Multi-Service Community Centre in Wan Chai	2,926,500			—	1,638,385	1,288,115
(7) Fitting out for reprovisioning the St. James' Project Care Neighbourhood Elderly Centre to Fuk Loi Estate, Tsuen Wan	2,808,300			—	2,575,162	233,138
(8) Fitting out St. James' Settlement Wan Chai Integrated Family Service Centre	4,212,500			—	3,917,800	294,700
(9) Fitting out a new district support centre for persons with disabilities in Wan Chai	3,150,200			2,814,877	2,814,877	335,323
(10) Furnishing and equipping a new district support centre for persons with disabilities in Wan Chai	420,000			—	—	420,000
(11) Renovating Li Chit Street Single Persons Hostel in Wan Chai	2,187,000			—	—	2,187,000
(12) Replacing the existing 12-seater private light bus with a new 14-seater liquefied petroleum gas private light bus for Wan Chai Day Care Centre for the Elderly	739,000			—	—	739,000
	42,816,900	6,221,000	6,221,000	4,952,063	36,643,642	6,173,258
<b>101. Suicide Prevention Services Limited</b>		<b>317,000</b>	<b>1,946,000</b>			
(1) Fitting out the Suicide Prevention Services at Ping Shek Estate, Kowloon	1,587,300			1,358,500	1,358,500	228,800
(2) Upgrading the hotline system for Suicide Prevention Services at Ping Shek Estate, Kowloon	473,500			320,370	320,370	153,130
	2,060,800	317,000	1,946,000	1,678,870	1,678,870	381,930
<b>102. Superioress of the Sisters of the Precious Blood</b>						
Carrying out drainage works for Precious Blood Children's Village in Fanling	3,174,600	—	—	—	2,977,639	196,961
<b>103. SAHK</b>		<b>6,320,000</b>	<b>15,395,000</b>			
(1) Renovating the Woche Workshop in Shatin	3,602,400			28,078	3,425,386	177,014 N
(2) Renovating the On Ting Hostel in Tuen Mun	5,246,600			38,725	4,977,747	268,853
(3) Renovating the Lok Wah Hostel in Ngau Tau Kok	4,631,200			—	4,384,503	246,697
(4) Renovating the Lung Hang Pre-school Centre in Shatin	1,930,300			—	1,729,507	200,793
(5) Renovating Fu Tung Training Centre and Fu Tung Hostel in Tung Chung, Lantau	944,300			64,000	723,523	220,777 N
(6) Replacing the existing 36-seater private bus with a new 29-seater one for Wo Che Workshop in Sha Tin	1,385,300			—	1,262,750	122,550 N
(7) Fitting out a new integrated rehabilitation services centre at Sheung Shing Street, Ho Man Tin	29,854,000			—	23,148,380	6,705,620
(8) Furnishing and equipping a new integrated rehabilitation services centre at Sheung Shing Street, Ho Man Tin	3,634,000			338,797	3,632,158	1,842 N

# Lotteries Fund

## STATEMENT OF APPROVED GRANTS—continued

## SCHEDULE 1

Descriptions	Approved Commitments	2012–13 Expenditure		Accumulated Expenditure to 31.3.2013	Unspent Balances (N=Not required)
	HKS	Original Estimate HKS	Amended Estimate HKS	Actual HKS	HKS
(9) Renovating Apleichau Pre-School Centre in Aberdeen	771,000			—	771,000
(10) Renovating Lung Tai Hostel in Wong Tai Sin	959,000			—	959,000
(11) Renovating Bradbury Tak Tin Workshop in Lam Tin	1,325,000			—	1,325,000
(12) Fitting out Pak Tin Special Child Care Centre cum Early Education and Training Centre in Sham Shui Po	6,936,000			5,706,574	1,229,426
(13) Furnishing and equipping Pak Tin Special Child Care Centre cum Early Education and Training Centre in Sham Shui Po	2,956,000			258,112	2,697,888
(14) Replacing two existing private buses with two new 31-seater private buses for B M Kotewall Memorial School	4,052,000			—	4,052,000
(15) Replacing the existing 12-seater private light bus with a new 15-seater diesel private light bus for On Ting Hostel	818,000			—	818,000
(16) Replacing the existing 16-seater private light bus with a new 15-seater diesel private light bus for Jockey Club Elaine Field School	804,000			—	804,000
(17) Replacing two private buses with a new 22-seater private bus and a new 31-seater private bus for Ko Fook Ju Memorial School	3,505,000			—	3,505,000
	73,354,100	6,320,000	15,395,000	6,434,286	24,105,460
<b>104. Tung Tsin Mission of Hong Kong Social Service Company Limited</b>					
Renovating, furnishing and equipping the main base of Sha Tin Integrated Service Centre	3,426,900	2,056,000	2,056,000	99,650	550,361 N
<b>105. Tung Lum Nien Fah Tong Limited</b>		5,272,000	5,272,000		
(1) Replacing the existing 12-seater private light bus with a new one for Tung Lum Buddhist Aged Home in Tsuen Wan	691,000			690,699	301 N
(2) Upgrading the provision of hospital beds in Tung Lum Buddhist Aged Home	635,000			—	635,000
(3) Sewerage improvement works for Tung Lum Buddhist Aged Home in Tsuen Wan	2,698,000			30,000	2,668,000
(4) Renovating, furnishing and equipping Tung Lum Buddhist Aged Home in Tsuen Wan	7,577,000			—	7,577,000
	11,601,000	5,272,000	5,272,000	720,699	10,880,301
<b>106. Tung Sin Tan, Home for the Aged</b>					
Renovating, furnishing and equipping Tung Sin Tan Home for the Aged	5,411,400	1,671,000	1,671,000	—	891,768
<b>107. Tung Wah Group of Hospitals</b>		66,402,000	99,712,000		
(1) Constructing, furnishing and equipping the Wu Chiang Wai Fong Home	57,284,000			—	8,144,983
(2) Constructing, furnishing and equipping the Wong Cho Tong Social Service Building at Sheung Shing Street, Ho Man Tin	118,888,000			—	21,226,746
(3) Repairing works and stability study of the slopes and retaining wall for David Trench Home for the Aged	475,000			—	171,839
(4) Renovating the Tai Tung Pui Care and Attention Home	5,134,000			88,649	277,438
(5) Renovating the Mok Law Sui Wah Integrated Vocational Rehabilitation Centre	3,269,600			—	456,089
(6) Setting up and operating a multi-purpose crisis intervention and support centre on a 3-year basis	20,108,000			—	1,552,210
(7) Upgrading works for 3 slopes of Pao Siu Loong and Wu York Yu Care and Attention Home, Tai Po	5,217,500			—	1,390,519

# Lotteries Fund

## STATEMENT OF APPROVED GRANTS—continued

## SCHEDULE 1

Descriptions	Approved Commitments HK\$	2012–13 Expenditure		Actual HK\$	Accumulated Expenditure to 31.3.2013 HK\$	Unspent Balances (N=Not required) HK\$
		Original Estimate HK\$	Amended Estimate HK\$			
(8) Renovating, furnishing and equipping the Zonta Club of Kowloon Nursery School in Tin Shui Wai	628,700			—	398,480	230,220
(9) Fitting out the additional premises of Fong Shiu Yee Neighbourhood Elderly Centre at Sau Mau Ping Estate	1,086,700			—	585,504	501,196
(10) Fitting out a new 60-place day care centre for the elderly at Sun Tin Wai Estate, Sha Tin	3,309,000			—	3,257,810	51,190
(11) Fitting out the additional premises of Wu Ki Lim Neighbourhood Elderly Centre in Shau Kei Wan	1,086,700			—	943,251	143,449
(12) Fitting out an additional premises of Wilson T S Wang District Community Centre in Sha Tin	769,300			—	685,013	84,287
(13) Purchasing the upgraded furniture and equipment items for residential care homes for the elderly, day care centres for the elderly and care and attention homes for the aged blind	5,006,770			—	4,915,115	91,655 N
(14) Installing air-conditioning system for Ho Tung Home for the Elderly for conversion of self-care and home for the aged places into long-term care places, Kowloon	587,100			—	291,291	295,809
(15) Fitting out additional premises of Wong Cho Tong District Elderly Community Centre in Ho Man Tin	1,135,600			—	1,067,913	67,687
(16) Installation of air-conditioning system for Mok Wong Fung Yee Home for the Elderly in Sha Tin	1,051,500			—	451,105	600,395
(17) Installation of air-conditioning system for Lee See Ping Home for the Elderly in Chai Wan	1,041,100			<b>197,308</b>	970,504	70,596
(18) Carrying out replacement works of the air-conditioning system for Jockey Club Rehabilitation Complex in Aberdeen	30,917,200			<b>875,806</b>	10,942,738	19,974,462
(19) Renovating Women's Welfare Club Western District, Hong Kong Residential Care Home for the Elderly in Shau Kei Wan	1,887,300			<b>13,125</b>	43,750	1,843,550
(20) Renovating, furnishing and equipping the Jockey Club Rehabilitation Complex in Aberdeen	42,342,200			<b>28,784,956</b>	28,784,956	13,557,244
(21) Purchasing a 27-seater private bus for Tsui Tsin Tong School in Aberdeen	563,500			—	538,297	25,203 N
(22) Fitting out for reprovisioning the main base of Jockey Club Shatin Integrated Services Centre to Jubilee Court Shopping Centre in Sha Tin	2,674,000			<b>2,322,312</b>	2,380,062	293,938
(23) Renovating, furnishing and equipping Ho Tung Home for the Elderly in Diamond Hill	3,540,500			—	—	3,540,500
(24) Renovating, furnishing and equipping Mok Wong Fung Yee Home for the Elderly in Sha Tin	7,034,000			<b>121,351</b>	151,351	6,882,649
(25) Meeting the operating cost to implement a 3-year pilot scheme on home care services for frail elders in Kowloon City, Yau Tsim Mong and Sham Shui Po	17,640,000			<b>5,880,000</b>	12,250,000	5,390,000
(26) Redevelopment of the Tung Wah Group of Hospitals David Trench Home for the Elderly in Aberdeen	179,179,000			—	—	179,179,000
(27) Renovating, furnishing and equipping for converting home for the aged places into long term care places in Hui Lai Kuen Home for the Elderly in Tai Yuen Estate, Tai Po	6,436,000			—	30,000	6,406,000
(28) Renovating, furnishing and equipping Wu York Yu Care and Attention Home in Tai Po	14,680,000			<b>30,000</b>	30,000	14,650,000
(29) Renovating, furnishing and equipping Fong Wong Woon Tei Home for the Elderly in Fanling	8,753,000			<b>30,000</b>	30,000	8,723,000
(30) Installation of air-conditioning for Y.C. Liang Memorial Home for the Elderly in Tin Shui Wai	766,000			<b>26,773</b>	26,773	739,227
(31) Upgrading the provision of hospital beds in Fong Shu Chuen Care and Attention Home	830,000			—	—	830,000
(32) Upgrading the provision of hospital beds in Hui Mok Tak Yu Care and Attention Home	648,000			—	—	648,000
(33) Upgrading the provision of hospital beds in Ma Cheng Shuk Ying Home for the Elderly	778,000			—	—	778,000

# Lotteries Fund

## STATEMENT OF APPROVED GRANTS—continued

## SCHEDULE 1

Descriptions	Approved	2012–13 Expenditure		Accumulated	Unspent
	Commitments	Original	Amended	Expenditure	Balances
	HKS	Estimate	Estimate	to 31.3.2013	(N=Not required)
		HKS	HKS	HKS	HKS
(34) Upgrading the provision of hospital beds in Tai Tung Pui Care and Attention Home	894,000			—	894,000
(35) Upgrading the provision of hospital beds in Wong Cho Tong Care and Attention Home	959,000			569,800	389,200 N
(36) Purchasing essential equipment for Enhanced Home and Community Care Services Teams in Eastern, Kowloon City and Yau Tsim Mong/Kowloon City Cluster	667,000			185,943	481,057
(37) Replacing a passenger lift for Pao Siu Loong Care and Attention Home in Tai Po	1,302,000			—	1,302,000
(38) Fitting out a new 70-place day care centre for the elderly at Chak On Estate, Sham Shui Po	5,422,000			4,446,483	975,517
(39) Furnishing and equipping a new 70-place day care centre for the elderly at Chak On Estate, Sham Shui Po	3,153,000			666,410	2,486,590
(40) Upgrading the provision of hospital beds in Ho Tung Home for the Elderly	415,000			—	415,000
(41) Upgrading the provision of hospital beds in Po Chung Chuen Ying Home for the Elderly	454,000			—	454,000
(42) Fitting out a residential care home for the elderly at Willow Street, Tai Kok Tsui	15,165,000			13,501,400	1,663,600
(43) Furnishing and equipping a residential care home for the elderly at Willow Street, Tai Kok Tsui	2,313,000			1,002,722	1,310,278
(44) Carrying out tree removal and maintenance works for Shuen Wan Complex for the Elderly in Tai Po	505,000			—	505,000
(45) Furnishing and equipping CROSS Centre - Central Western, Southern and Islands Office in Sheung Wan	437,000			—	437,000
(46) Fitting out Tin Ching Special Child Care Centre cum Early Education and Training Centre in Tin Shui Wai	2,772,000			2,510,750	261,250
(47) Furnishing and equipping Tin Ching Special Child Care Centre cum Early Education and Training Centre in Tin Shui Wai	657,000			451,791	205,209
(48) Furnishing and equipping Hang Ngai Manufacturing and Hostel	601,000			—	601,000
(49) Renovating, furnishing and equipping for converting home for the aged places into long term care places for Lo Man Huen Home for the Elderly in Sha Tin	9,716,000			—	9,716,000
(50) Renovating, furnishing and equipping for converting home for the aged places into long term care places for Ma Cheng Shuk Ying Home for the Elderly in Shamshuipo	6,638,000			—	6,638,000
(51) Renovating, furnishing and equipping Ma Hing Chou Home for the Elderly in Sha Tin	5,374,000			—	5,374,000
(52) Replacing the existing 14-seater private light bus with a new 14-seater liquefied petroleum gas private light bus for Fong Shu Chuen Day Care Centre for the Elderly	771,000			—	771,000
(53) Replacing the existing 13-seater private light bus with a new 13-seater liquefied petroleum gas private light bus for Fong Shu Chuen Care and Attention Home	776,000			—	776,000
(54) Undertaking fire safety/building safety rectification measures to meet the statutory requirements under the Residential Care Homes (Persons with Disabilities) Ordinance for Wong Cho Tong Integrated Vocational Rehabilitation Centre cum Hostel	484,000			—	484,000
(55) Upgrading the provision of hospital beds in Hui Mok Tak Yu Care and Attention Home	780,000			—	780,000
(56) Upgrading the provision of hospital beds in Pao Siu Loong Care and Attention Home	1,196,000			—	1,196,000
(57) Upgrading the provision of hospital beds in Tai Tung Pui Care and Attention Home	1,638,000			—	1,638,000
(58) Upgrading the provision of hospital beds in Wong Cho Tong Care and Attention Home	2,379,000			—	2,379,000

# Lotteries Fund

## STATEMENT OF APPROVED GRANTS—continued

## SCHEDULE 1

Descriptions	Approved Commitments	2012-13 Expenditure			Accumulated Expenditure to 31.3.2013	Unspent Balances (N=Not required)
	HKS	Original Estimate HKS	Amended Estimate HKS	Actual HKS	HKS	HKS
(59) Upgrading the provision of hospital beds in Wu York Yu Care and Attention Home	728,000			—	—	728,000
(60) Upgrading the provision of hospital beds in Y C Liang Memorial Home for the Elderly	689,000			—	—	689,000
(61) Upgrading the provision of hospital beds in Yu Chun Keung Memorial Care and Attention Home	1,573,000			—	—	1,573,000
(62) Upgrading the provision of hospital beds in Jockey Club Yee King Care and Attention Home	455,000			—	—	455,000
(63) Upgrading the provision of hospital beds in Jockey Club Yee Lok Care and Attention Home	533,000			—	—	533,000
(64) Upgrading the provision of hospital beds in Jockey Club Yee On Care and Attention Home	559,000			—	—	559,000
(65) Upgrading the provision of hospital beds in Jockey Club Yee Tai Care and Attention Home	611,000			—	—	611,000
(66) Upgrading the provision of hospital beds in Jockey Club Yee Yeung Care and Attention Home	611,000			—	—	611,000
	615,974,270	66,402,000	99,712,000	61,705,579	269,265,488	346,708,782
<b>108. United Christian Nethersole Community Health Service</b>		—	2,169,000			
(1) Replacing the existing 14-seater private light bus with a new 12-seater liquefied petroleum gas private light bus for Lei Yue Mun Day Care Centre for the Elderly in Yau Tong	717,000			608,739	608,739	108,261
(2) Replacing the existing 7-seater van with a 12-seater private light bus for Tai Po Integrated Home Care Service Team in Tai Po	735,000			730,240	730,240	4,760
(3) Replacing the existing 14-seater private light bus with a new 12-seater liquefied petroleum gas private light bus for Lei Yue Mun Day Care Centre for the Elderly in Yau Tong	717,000			608,739	608,739	108,261
	2,169,000	—	2,169,000	1,947,718	1,947,718	221,282
<b>109. United Muslim Association of Hong Kong</b>						
Renovating, furnishing and equipping Haji Omar Ramju Sadick Care and Attention Home at Yau Oi Estate, Tuen Mun	1,039,200	—	—	—	—	1,039,200
<b>110. University of Hong Kong</b>		1,590,000	3,431,000			
(1) Organising the 5th International Conference of Social Work in Health and Mental Health	1,500,000			—	—	1,500,000
(2) Implementing a three-year pilot project on community-based intervention to suicide clusters	5,139,000			1,300,000	3,300,000	1,839,000
(3) Conducting an evaluative study of three pilot cyber youth outreaching projects	789,000			78,900	236,700	552,300
(4) Conducting a review of the information technology strategy for the social welfare sector	1,189,000			475,392	475,392	713,608
	8,617,000	1,590,000	3,431,000	1,854,292	4,012,092	4,604,908
<b>111. Wai Ji Christian Service</b>		—	363,000			
(1) Fitting out a district support centre for persons with disabilities at Long Ping Estate, Yuen Long	4,310,200			362,233	4,309,423	777
(2) Undertaking fire safety/building safety rectification measures for Hor Ping Hostel	652,000			—	—	652,000
	4,962,200	—	363,000	362,233	4,309,423	652,777
<b>112. Women Service Association</b>						
Fitting out a new mutual help child care centre at Kwai Chung Estate, New Territories	1,050,100	156,000	156,000	—	845,223	204,877

# Lotteries Fund

## STATEMENT OF APPROVED GRANTS—continued

## SCHEDULE 1

Descriptions	Approved Commitments	2012–13 Expenditure		Accumulated Expenditure to 31.3.2013	Unspent Balances (N=Not required)
	HKS	Original Estimate HKS	Amended Estimate HKS	HKS	HKS
<b>113. Women's Welfare Club (Eastern District) Hong Kong</b>		<b>402,000</b>	<b>402,000</b>		
(1) Upgrading the provision of hospital beds in Ng Siu Mui Home cum Care and Attention Unit for the Elderly	402,000			325,500	325,500
(2) Replacing the water supply system for Ng Siu Mui Home cum Care and Attention Unit for the Elderly in Shau Kei Wan	1,012,000			—	—
	1,414,000	402,000	402,000	325,500	325,500
<b>114. Women's Welfare Club, Western District, Hong Kong</b>					
Installing a passenger lift for Chung Hok Social Centre for the Elderly in Sheung Wan	2,961,700	—	144,000	120,000	2,288,472
<b>115. Yan Chai Hospital</b>		<b>24,553,000</b>	<b>24,553,000</b>		
(1) Fitting out a care and attention home for the severely disabled persons at Lei Muk Shue Estate, Tsuen Wan	6,727,800			—	6,117,950
(2) Fitting out an additional premises of Fong Yock Yee Neighbourhood Elderly Centre at Tsuen Wan Baptist Church, Tsuen Wan	1,465,200			—	1,255,615
(3) Replenishing furniture and equipment for Au Yeung Sum Memorial Elderly Home cum Day Care Unit in Wong Tai Sin	1,114,200			293,950	1,114,150
(4) Replacing two 12-seater private light buses with two 14-seater vehicles for Wan Shing Memorial Day Care Centre for the Elderly in Sha Tin	1,285,200			1,285,136	1,285,136
(5) Renovating, furnishing and equipping Yan Chai Hospital Artiste Training Alumni Association Care and Attention Home in Kwai Chung	8,095,900			69,000	160,500
(6) Renovating Au Yeung Sum Memorial Elderly Home cum Day Care Unit in Wong Tai Sin	1,152,300			65,922	65,922
(7) Furnishing and equipping a residential care home for the elderly at Un Chau Street Estate, Sham Shui Po	2,192,400			1,669,180	2,057,338
(8) Fitting out a residential care home for the elderly at Un Chau Street Estate, Sham Shui Po	18,792,000			—	14,052,140
(9) Fitting out a new district support centre for persons with disabilities in Tai Po District	3,798,000			3,219,623	3,219,623
(10) Furnishing and equipping a new district support centre for persons with disabilities in Tai Po District	420,000			—	—
(11) Replacing the existing 12-seater private light bus with a new 13-seater diesel private light bus for Chinachem Care and Attention Home	726,000			715,636	715,636
(12) Upgrading the provision of hospital beds in Chinachem Care and Attention Home	1,801,000			—	—
(13) Upgrading the provision of hospital beds in Mrs. Kwok Yuk Cheung Care and Attention Home	1,594,000			—	—
(14) Upgrading the provision of hospital beds in Tsin Man Kuen Elderly Home	428,000			252,450	252,450
(15) Replacing kitchen equipment for Chinachem Care and Attention Home in Kwai Chung	1,798,000			—	—
(16) Carrying out periodic electrical inspection for Yan Chai Hospital Multi-services Complex in Tsuen Wan	631,000			—	—
(17) Upgrading the provision of hospital beds in Artiste Training Alumni Association Care and Attention Home	1,716,000			—	—
(18) Upgrading the provision of hospital beds in Hong Kong Peninsula Lions Club Elderly Home	559,000			—	—
(19) Upgrading the provision of hospital beds in Li Chan Yuk Sim Elderly Home	468,000			—	—

# Lotteries Fund

## STATEMENT OF APPROVED GRANTS—continued

## SCHEDULE 1

Descriptions	Approved Commitments	2012-13 Expenditure			Accumulated Expenditure to 31.3.2013	Unspent Balances (N=Not required)
	HKS	Original Estimate HKS	Amended Estimate HKS	Actual HKS	HKS	HKS
(20) Furnishing and equipping for upgrading the provision of hospital beds for Yan Chai Nursing Home	4,303,000			—	—	4,303,000
(21) Renovating Wan Shing Memorial Day Care Centre for the Elderly in Shatin	2,376,000			—	—	2,376,000
(22) Improvement works for the air-conditioning system in Yang Chai Hospital Multi-services Complex in Tsuen Wan	1,147,000			—	—	1,147,000
	62,590,000	24,553,000	24,553,000	7,570,897	30,296,460	32,293,540
<b>116. Yan Oi Tong Limited</b>		<b>954,000</b>	<b>1,368,000</b>			
(1) Fitting out the Ng Kam Yuk Memorial Neighbourhood Elderly Centre to meet standard schedule of accommodation	950,000			—	774,552	175,448
(2) Fitting out the additional premises of the Toi Shan Association Neighbourhood Elderly Centre at Sui Wo Shopping Centre, Shatin	774,200			—	659,158	115,042
(3) Fitting out the additional premises of Pang Hung Cheung Neighbourhood Elderly Centre at Tak Nga Court, Tai Po	1,953,600			—	—	1,953,600
(4) Purchasing two 14-seater liquefied petroleum gas private light buses for Yan Oi Tong Lung Siu Nga Day Care Centre for the Elderly	1,520,000			—	—	1,520,000
	5,197,800	954,000	1,368,000	—	1,433,710	3,764,090
<b>117. Yang Memorial Methodist Social Service</b>		<b>1,582,000</b>	<b>3,565,000</b>			
(1) Fitting out for reprovisioning Yau Tsim Mong Integrated Children and Youth Services Centre to Mong Kok West Area 20 Phase 4	4,548,300			—	4,301,376	246,924
(2) Meeting the start-up costs of an integrated family service centre for initial two years	255,900			12,795	255,900	—
(3) Fitting out for reprovisioning Mong Kok Integrated Family Service Centre to Nathan Road, Mong Kok	3,910,900			—	3,822,818	88,082 N
(4) Enhanced New Dawn Project from October 2007 to March 2010 in Yuen Long/Tin Shui Wai	1,845,000			(522,943)	983,057	861,943 N
(5) Fitting out a new integrated rehabilitation services centre at Lei Yue Mun Estate, Kwun Tong	14,832,000			—	13,585,230	1,246,770
(6) Fitting out the additional premises of Oi Man Neighbourhood Elderly Centre in Ho Man Tin	1,478,000			1,258,835	1,258,835	219,165
(7) Fitting out a self-financing residential care home for persons with intellectual disabilities in Tuen Mun	3,261,000			2,238,637	2,238,637	1,022,363
(8) Replacing the existing private light bus with a new 14-seater liquefied petroleum gas private light bus for Bradbury Day Activity Centre in Waterloo Road	847,000			—	—	847,000
(9) Replacing a 8-seater private light bus with a 14-seater liquefied petroleum gas private light bus for Yau Mong Home Care Service	812,000			—	—	812,000
	31,790,100	1,582,000	3,565,000	2,987,324	26,445,853	5,344,247
<b>118. Youth Outreach</b>						
Setting up an all-night drop-in centre for youth-at-risk on a 3-year pilot basis	20,336,600	—	—	—	19,326,494	1,010,106

# Lotteries Fund

## STATEMENT OF APPROVED GRANTS—continued

## SCHEDULE 1

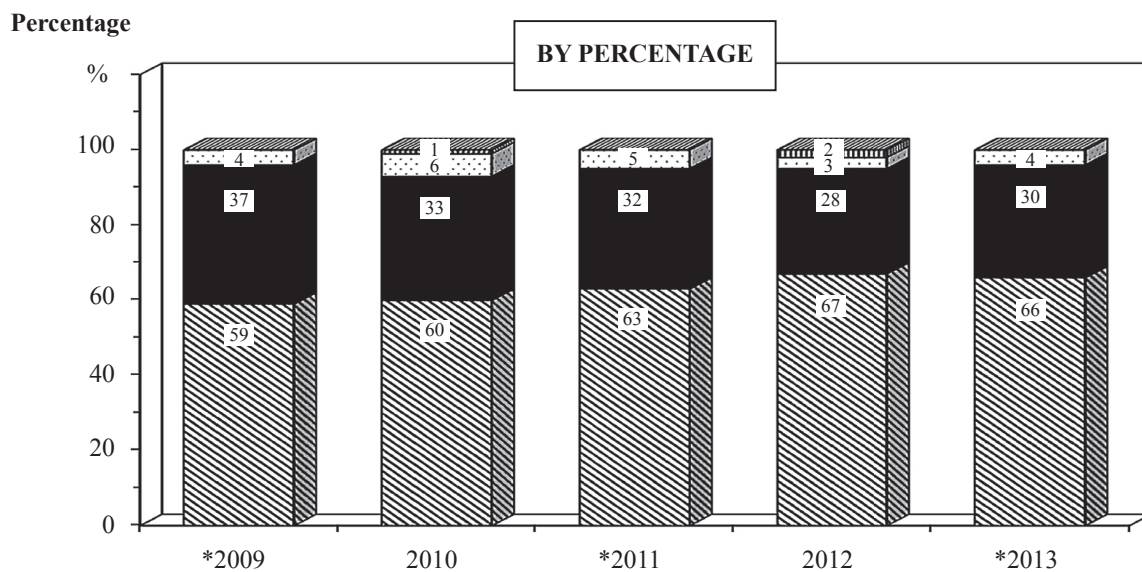
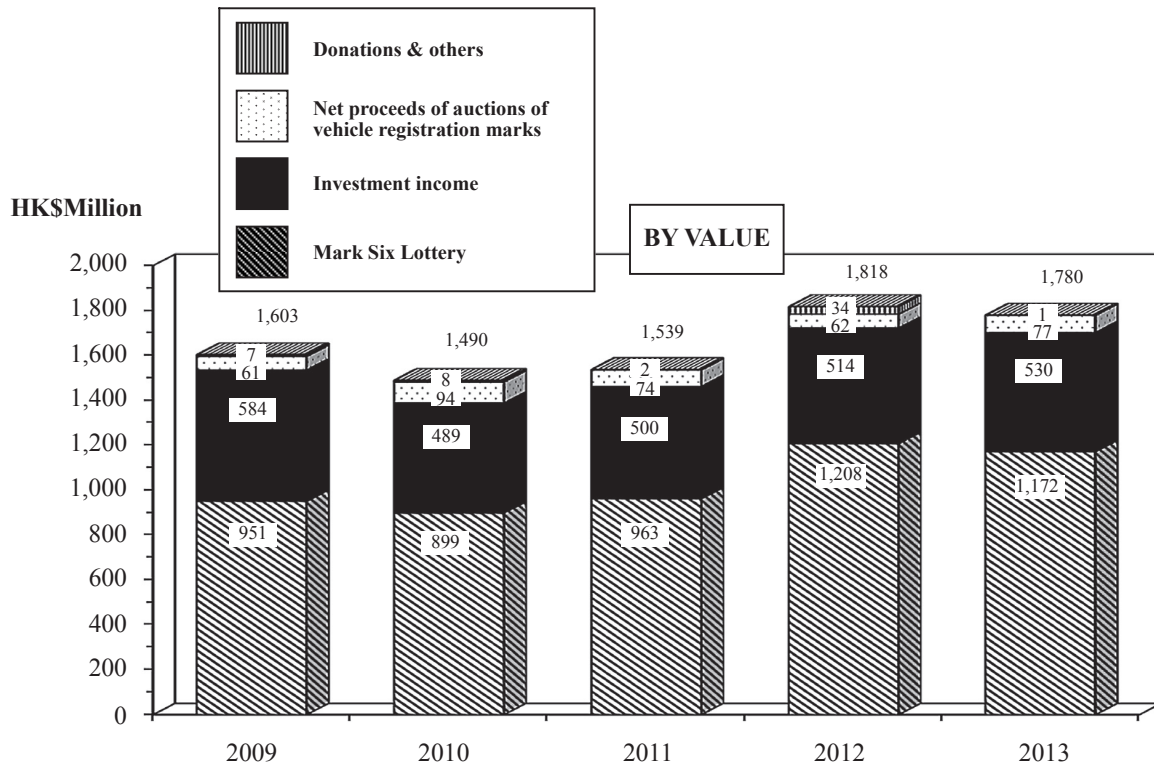
Descriptions	Approved Commitments	2012-13 Expenditure		Accumulated Expenditure to 31.3.2013	Unspent Balances (N=Not required)	
	HK\$	Original Estimate HK\$	Amended Estimate HK\$	Actual HK\$	HK\$	
<b>119. Yuen Yuen Institute</b>		<b>2,985,000</b>	<b>2,985,000</b>			
(1) Fitting out a new 124-place residential care home for the elderly cum a 20-place day care unit at Lei Muk Shue Estate, Tsuen Wan	18,510,400			—	16,296,968	2,213,432
(2) Renovating Yuen Yuen Elderly Centre (Sham Tseng) at Rhine Garden, Sham Tseng	1,252,500			<b>13,439</b>	1,093,423	159,077
(3) Upgrading the provision of hospital beds in Yuen Yuen Care and Attention Home for the Aged	972,000			<b>690,000</b>	690,000	282,000
	20,734,900	<b>2,985,000</b>	<b>2,985,000</b>	<b>703,439</b>	18,080,391	2,654,509
Sub-total	9,350,877,044	<b>825,279,000</b>	<b>1,045,573,000</b>	<b>717,590,531</b>	5,467,465,441	3,883,411,603
<b>120. Block grant</b>	N.A.	<b>126,520,000</b>	<b>138,910,000</b>	<b>138,910,000</b>	138,910,000	—
<b>121. Minor grants (block vote)</b>	N.A.	<b>33,000,000</b>	<b>33,000,000</b>	<b>24,515,743</b>	24,515,743	—
Total approved grants	N.A.	<b>984,799,000</b>	<b>1,217,483,000</b>	<b>881,016,274</b>	5,630,891,184	3,883,411,603
				<b>Outstanding Commitments</b>		<b>3,658,791,006</b>
				<b>Balances not required (N)</b>		<b>224,620,597</b>
				<b>Total unspent balances</b>		<b>3,883,411,603</b>

N.A.— Not applicable



# Lotteries Fund

## ANALYSIS OF REVENUE BY VALUE AND BY PERCENTAGE FOR THE YEARS ENDED 31 MARCH 2009 TO 2013



\* The percentage for the revenue of Donations & others is not shown as it is less than 1%.

# Lotteries Fund

## MARK SIX LOTTERY ALLOCATION OF GROSS PROCEEDS FOR THE YEARS ENDED 31 MARCH 2009 TO 2013

