

Legislative Council
Panel on Home Affairs and Panel on Development
Joint Subcommittee to Monitor the Implementation of the
West Kowloon Cultural District (“WKCD”) Project

Follow-up to the meeting on 7 July 2014

The Administration/West Kowloon Cultural District Authority were requested to –

- (a) **provide the completion schedule for the various facilities in WKCD and that for the planned transport infrastructure/road improvement works for the West Kowloon area, and advise whether and how the implementation of such works would dovetail with the phased commissioning of the WKCD facilities;**

Annex 1 shows the implementation schedules of the planned transport infrastructure/road improvement works for the West Kowloon area, which tally with the completion of various facilities in WKCD.

- (b) **provide a map showing an overview of all the existing and planned pedestrian connections/network at different levels (i.e. elevated/at-grade/below ground) that served to connect WKCD with the major transport nodes, the adjoining developments and the neighbouring districts, as well as to connect different parts of WKCD; and indicate in the map the detailed routes for pedestrians to get to WKCD via these connections (including whether they would be required to make level changes (e.g. from ground level to subways/footbridges) and whether there would be facilities for level changes, road crossings and barrier-free facilities); and**

A plan showing the existing and planned pedestrian network at different levels serving WKCD for connection with major transport nodes and neighbouring district/developments is enclosed in **Annex 2**.

- (c) **advise the number of coach parking spaces being provided/to be provided respectively at the China Ferry Terminal, Kowloon Station and the West Kowloon Terminus of the Guangzhou-Shenzhen-Hong Kong Express Rail Link.**

There are about 24 and 30 coach parking spaces in Kowloon Station and West Kowloon Terminus of Guangzhou-Shenzhen-Hong Kong Express Rail Link respectively. As for the China Ferry Terminal, although there is no dedicated

parking space for coach, a length of layby that can accommodate 5 coaches is reserved within the existing public transport interchange for shared use of coaches and non-franchised buses.

West Kowloon Cultural District Authority
November 2014

Pedestrian Infrastructures*(Please refer to the diagrammatic layout at Figure A1)*

New Transport Infrastructures	Description	Supporting Facilities/Developments (Completion Year)	Implementation Period
Austin Road Pedestrian Linkage Systems	Pedestrian linkage systems between MTR Austin Station and Xiqu Centre	Xiqu Centre (2017)	2015-2017
West Kowloon Terminus (WKT) Pedestrian Deck	A large pedestrian deck linking WKT and WKCD at ground level	Centre for Contemporary Performance (2022 at the earliest), Medium Theatre II (2022 at the earliest) and HOR developments in Zones 2A (after 2022) and 2B (after 2020)	2011-2017
China Ferry Terminal Bridge	A pedestrian link between Hong Kong-China City and Waterfront promenade of WKCD	Waterfront Promenade (2022 at the earliest) and Medium Theatre I and HOR alongside (after 2022)	2019-2022
Artist Square Bridge	A pedestrian link between Elements Shopping Mall and Artist Square of WKCD	M+ (2018), the Park (2015-2017), Lyric Theatre and HOR developments in Artist Square (around 2020)	2016-2018
Anchorage Bridge	A new footbridge linking the Kowloon Station and the northern tip of WKCD	Mega Performance Venue (subject to alternative funding options)	To be confirmed
Canton Road Entrance to WKCD	A new WKCD entrance on Canton Road subject to the existing Tsim Sha Tsui fire station relocation	The entire WKCD development	To be confirmed
Improvements under WKT of Guangzhou-Shenzhen-Hong Kong Express Rail Link (XRL) project	<p>(a) A total of six footbridges, including three footbridges would be provided from WKT to Kowloon Station; two footbridges connecting to Austin Station; one footbridge over Jordon Road connecting to the future public transport interchange.</p> <p>(b) A total of two subways would also be provided to connect WKT with Kowloon Station and Austin Station.</p> <p>(c) An at-grade crossing would also be provided on Wui Cheung Road arm of its junction with Jordon Road.</p>	WKT of XRL	2015-2017

Vehicular Infrastructures

(Please refer to the diagrammatic layout at Figures A2 and A3)

New Transport Infrastructures	Description	Supporting Facilities/Developments (Completion Year)	Implementation Period
Lay-by at East Gate	Drop-off/pick-up lay by for public transport on Austin Road West	Xiqu Centre (2017)	2015-2017
At-grade road around the Western Harbour Crossing (WHC) tunnel portal	An at-grade vehicular access within WKCD serving M+, the Park and the adjoining HOR developments	M+ (2018), the Park (2015-2017), Lyric Theatre and HOR developments in Artist Square (around 2020)	2015-2017
Lay-by at West Gate	Drop-off/pick-up lay by for public transport on Austin Road West	M+ (2018), the Park (2015-2017), Lyric Theatre and HOR developments in Artist Square (around 2020)	To be confirmed
Flyover across Western Harbour Crossing	A new flyover bridging the elevated Nga Cheung Road and the at-grade road adjoining future Mega Performance Venue/Exhibition Centre	Mega Performance Venue/Exhibition Centre (subject to alternative funding options)	To be confirmed
Lin Cheung Road /Austin Road West Underpass	Grade separation of the existing Lin Cheung Road/Austin Road West junction	WKT and WKCD	2011-2017
Canton Road Widening	Junction Improvement works on Canton Road	Part of West Kowloon Reclamation Development (WKRd) to relieve the traffic congestion problems on Canton Road	2015-2017
Central Kowloon Route	Dual 3-lane trunk road linking Yau Ma Tei Interchange in West Kowloon with the road network on Kai Tak Development and Kowloon Bay in East Kowloon	WKRd to improve connectivity between East and West Kowloon	To be confirmed

Vehicular Infrastructures

(Please refer to the diagrammatic layout at Figures A2 and A3)

New Transport Infrastructures	Description	Supporting Facilities/Developments (Completion Year)	Implementation Period
Road Improvement Works for West Kowloon Reclamation Development - Schemes 1, 2, 3, 4	Scheme 1 - single lane elevated carriageway connecting Hoi Po Road to West Kowloon Highway northbound	WKR D to improve the road network in WKR D area to cope with future traffic demand	2015-2018
	Scheme 2 - single lane elevated carriageway connecting elevated Nga Cheung Road to the toll plaza of Western Harbour Crossing		
	Scheme 3 - single lane at-grade carriageway connecting West Kowloon Highway southbound to elevated Nga Cheung Road		
	Scheme 4 - widening of the junction of Canton Road with Austin Road and Austin Road West, junction of Canton Road with Wui Cheung Road and junction of Canton Road with Jordan Road and Ferry Street		

Marine Infrastructures

(Please refer to the diagrammatic layout at Figure A4)

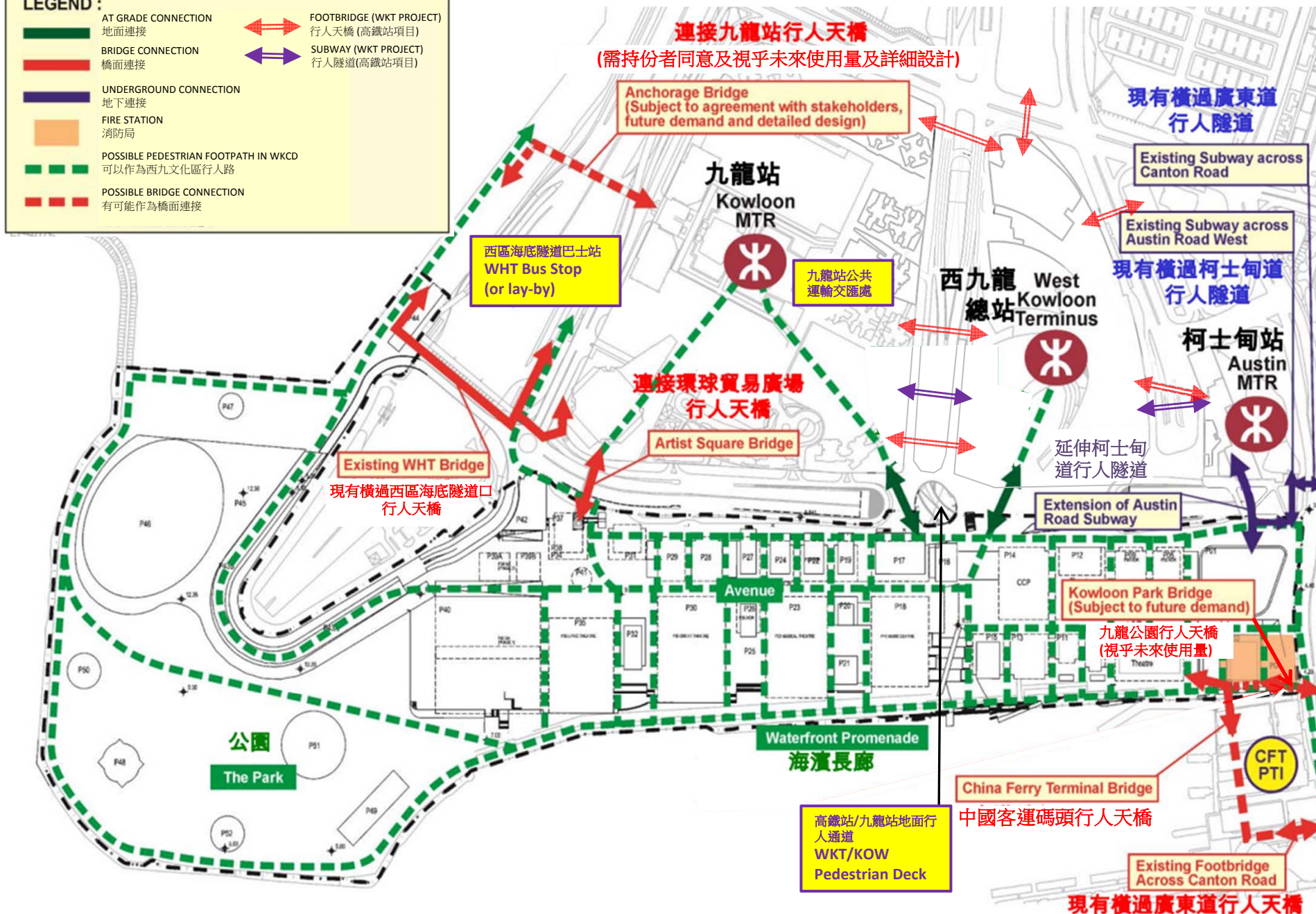
New Transport Infrastructures	Description	Supporting Facilities/Developments (Completion Year)	Implementation Period
Temporary landing facilities/beautification of existing landing facilities	landing facilities serving the early development of WKCD	M+ (2018), the Park (2015-2017), Lyric Theatre and office/residential developments in Artist Square (around 2020)	2017-2020
Permanent Pier(s)	Pier(s) serving WKCD	The entire WKCD development	To be confirmed

Pedestrian Infrastructures 供行人使用的基礎設施

Figure A1
A1 圖

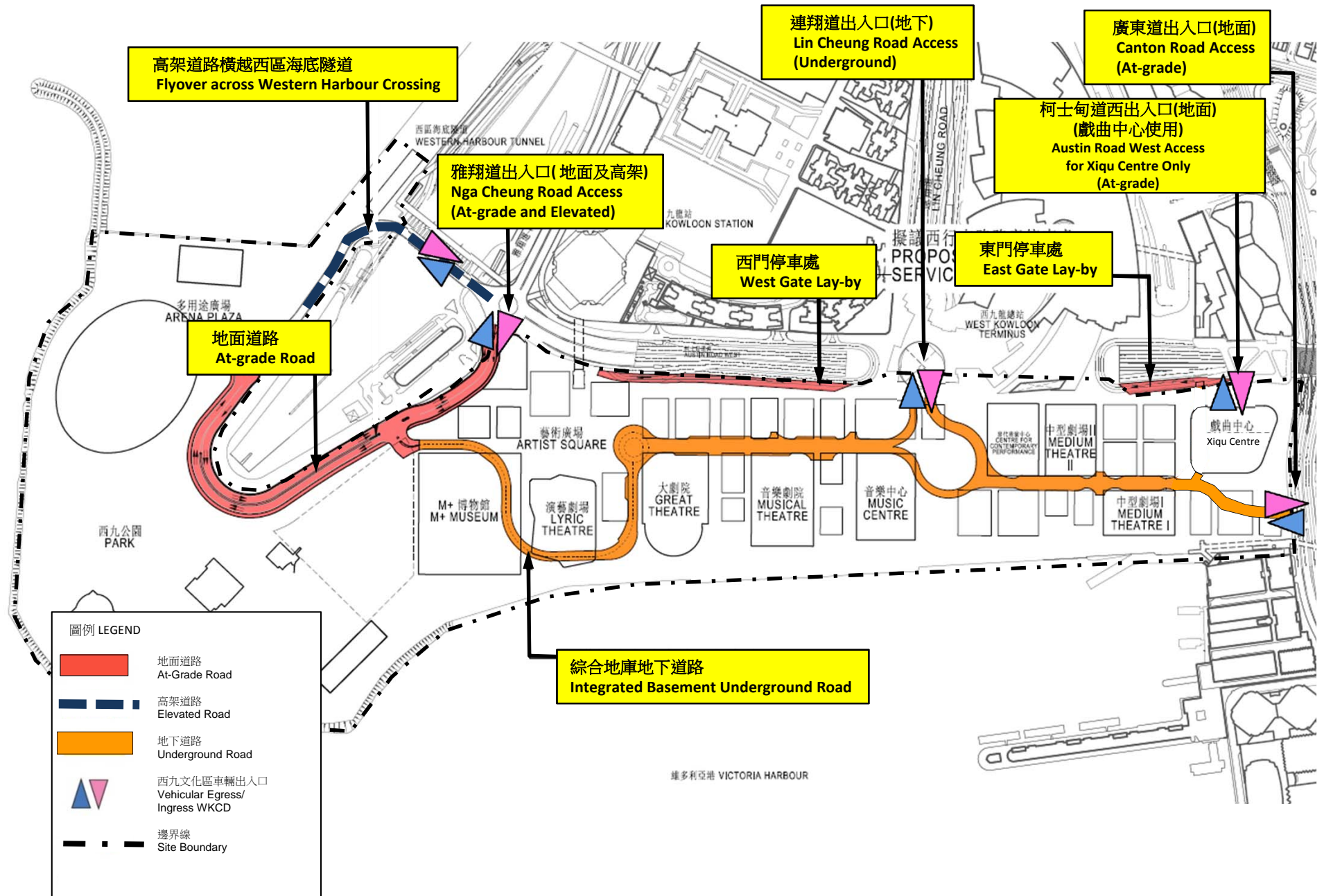
LEGEND :

- AT GRADE CONNECTION
地面連接
- BRIDGE CONNECTION
橋面連接
- UNDERGROUND CONNECTION
地下連接
- FIRE STATION
消防局
- POSSIBLE PEDESTRIAN FOOTPATH IN WKCD
可以作為西九文化區行人路
- POSSIBLE BRIDGE CONNECTION
有可能作為橋面連接
- FOOTBRIDGE (WKT PROJECT)
行人天橋 (高鐵站項目)
- SUBWAY (WKT PROJECT)
行人隧道 (高鐵站項目)



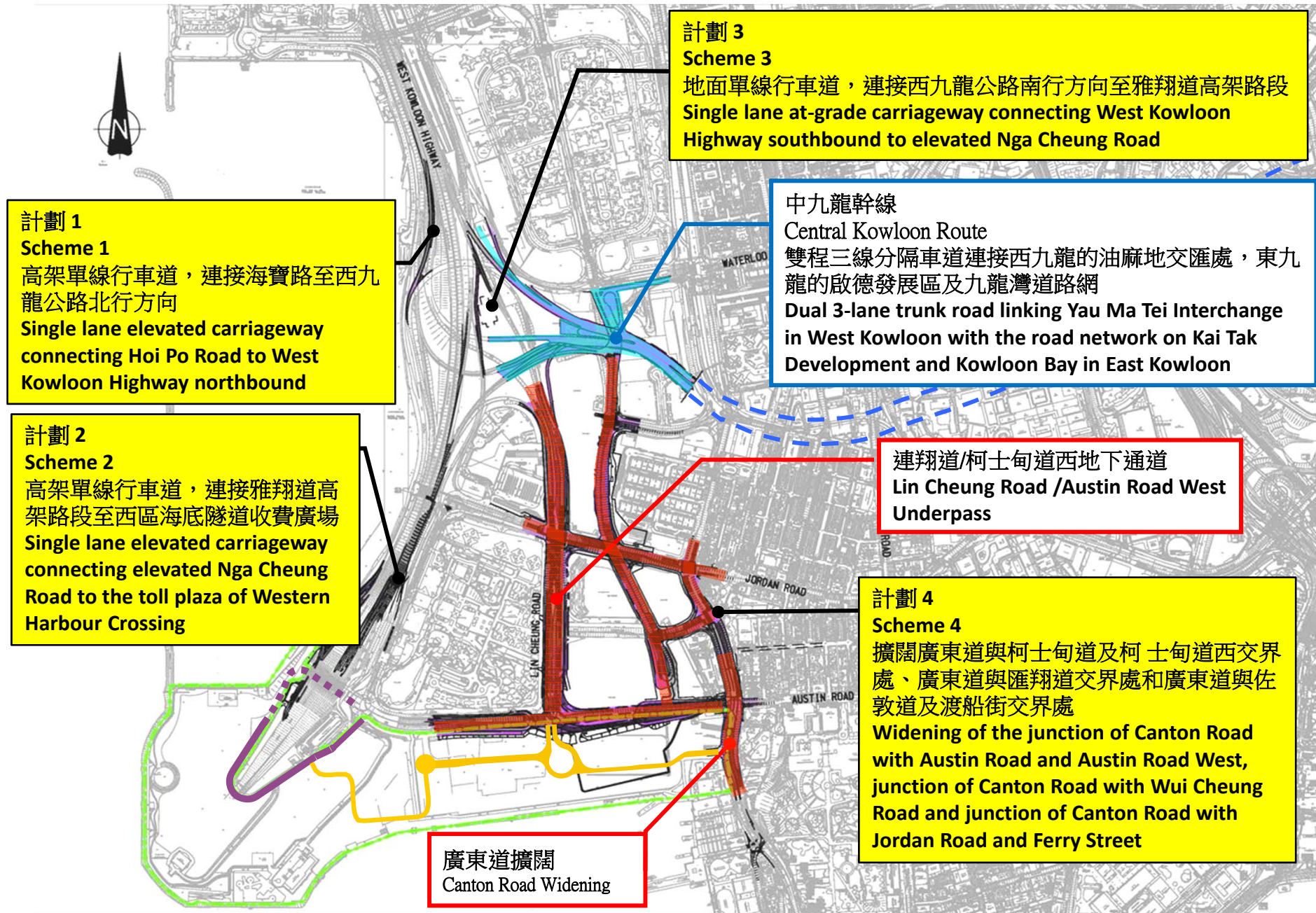
Vehicular Infrastructures 供車輛使用的基礎設施

Figure A2
A2 圖



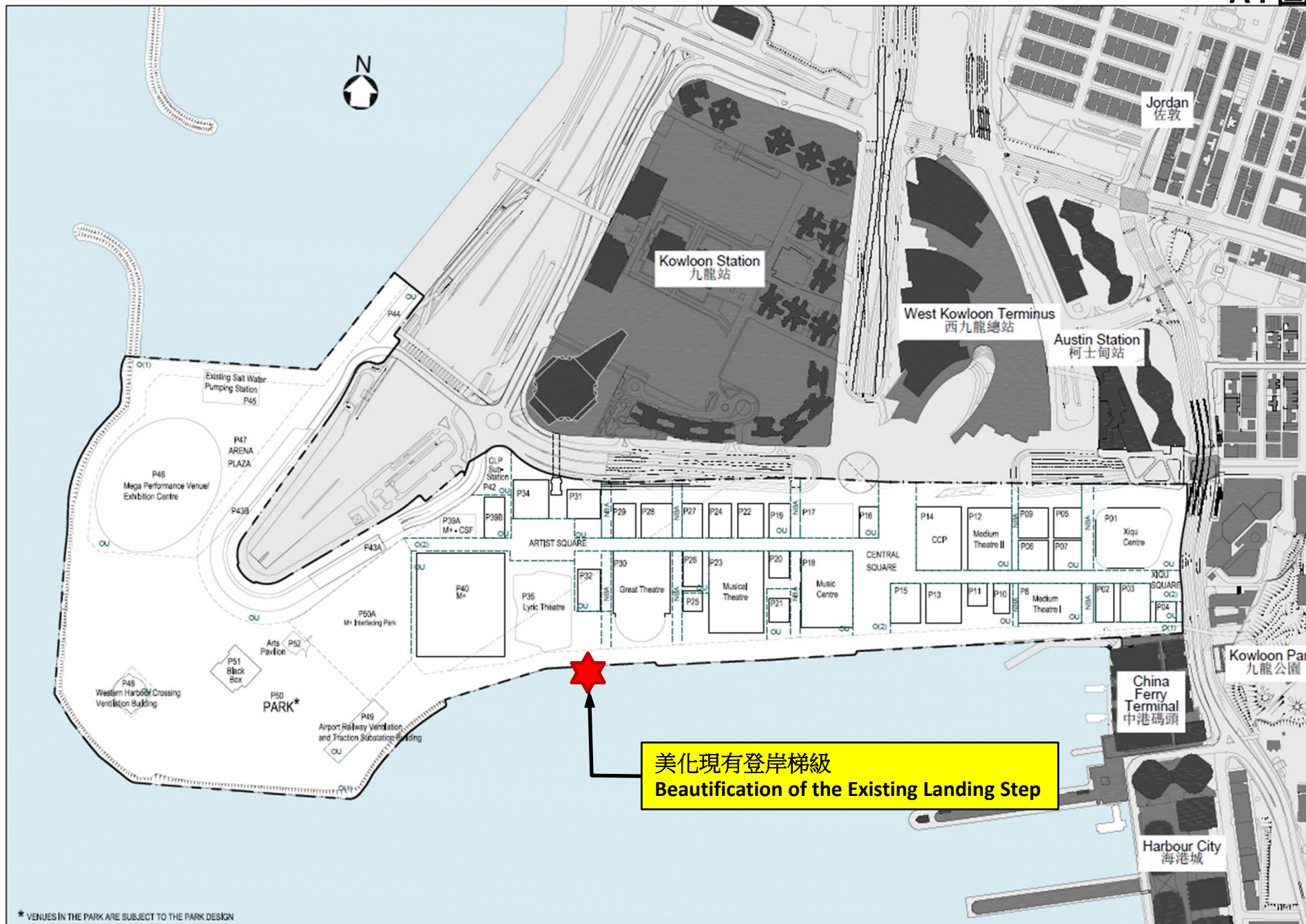
Vehicular Infrastructures 供車輛使用的基礎設施

Figure A3
A3圖



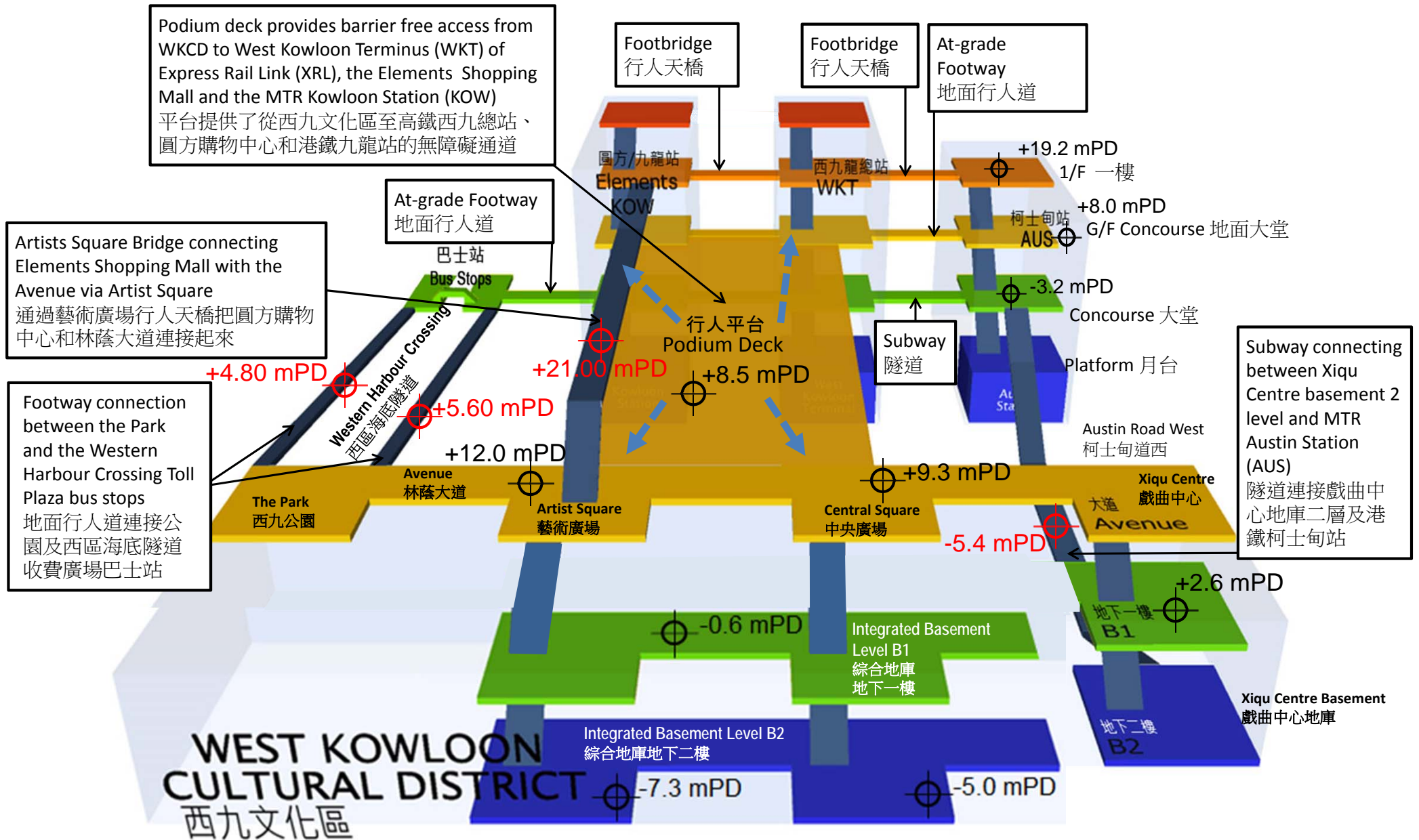
Marine Infrastructures 供海運的基礎設施

Figure A4
A4 圖



Pedestrian Connections with West Kowloon Cultural District (WKCD)

西九文化區的行人連接



Podium deck provides barrier free access from WKCD to West Kowloon Terminus (WKT) of Express Rail Link (XRL), the Elements Shopping Mall and the MTR Kowloon Station (KOW)
平台提供了從西九文化區至高鐵西九總站、圓方購物中心和港鐵九龍站的無障礙通道

Footbridge
行人天橋

Footbridge
行人天橋

At-grade Footway
地面行人道

At-grade Footway
地面行人道

Artists Square Bridge connecting Elements Shopping Mall with the Avenue via Artist Square
通過藝術廣場行人天橋把圓方購物中心和林蔭大道連接起來

Footway connection between the Park and the Western Harbour Crossing Toll Plaza bus stops
地面行人道連接公園及西區海底隧道收費廣場巴士站

Subway
隧道

Subway connecting between Xiqu Centre basement 2 level and MTR Austin Station (AUS)
隧道連接戲曲中心地庫二層及港鐵柯士甸站

WEST KOWLOON CULTURAL DISTRICT
西九文化區