

工務計劃編號 181WF

PWP No. 181 WF

沙田瀘水廠原地重置工程 (南廠) - 前期工程

In-situ Reprovisioning of Sha Tin Water Treatment Works (South Works) – Advance Work

立法會發展事務委員會

Legislative Council Panel on Development

24-2-2015



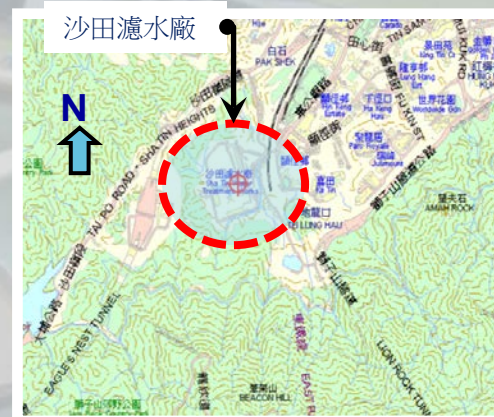
沙田瀘水廠現址(鳥瞰景觀)

Sha Tin Water Treatment Works (Bird's Eye View)

現時的北廠
Existing North Works



現時的南廠
Existing South Works



工程背景

Project Background

- 全港最大的濾水廠
The largest water treatment works in Hong Kong
- 1964年 - 南廠啟用
1964 - The South Works was commissioned
- 1973-1983年 - 北廠分階段完成及投產
1973 - 1983 - The North Works was implemented and commissioned in phases
- 供水的範圍包括九龍大部分地區、港島整個中西區在內的都會區和新界部分地區
Supply water to the metropolitan areas including a large part of Kowloon and the entire Central and Western districts on Hong Kong Island, and part of the New Territories



工程背景

Project Background

- 南廠內的裝置和設備已使用超過50年，接近使用年限，需要重置

The installations and facilities of the South Works have been in service for more than 50 years and have approached the end of their service life. Reprovisioning is necessary

- 應付在供水區內的用水需求增長
To cope with increasing demand of fresh water in the supply zone



施工階段

Staging of Works

- 分兩階段施工

Works to be implemented in 2 Stages

- ❖ 「前期工程」及「主項工程」
The “Advance Works” and the “Main Works”

- 前期工程目的

Aim of Advance Works

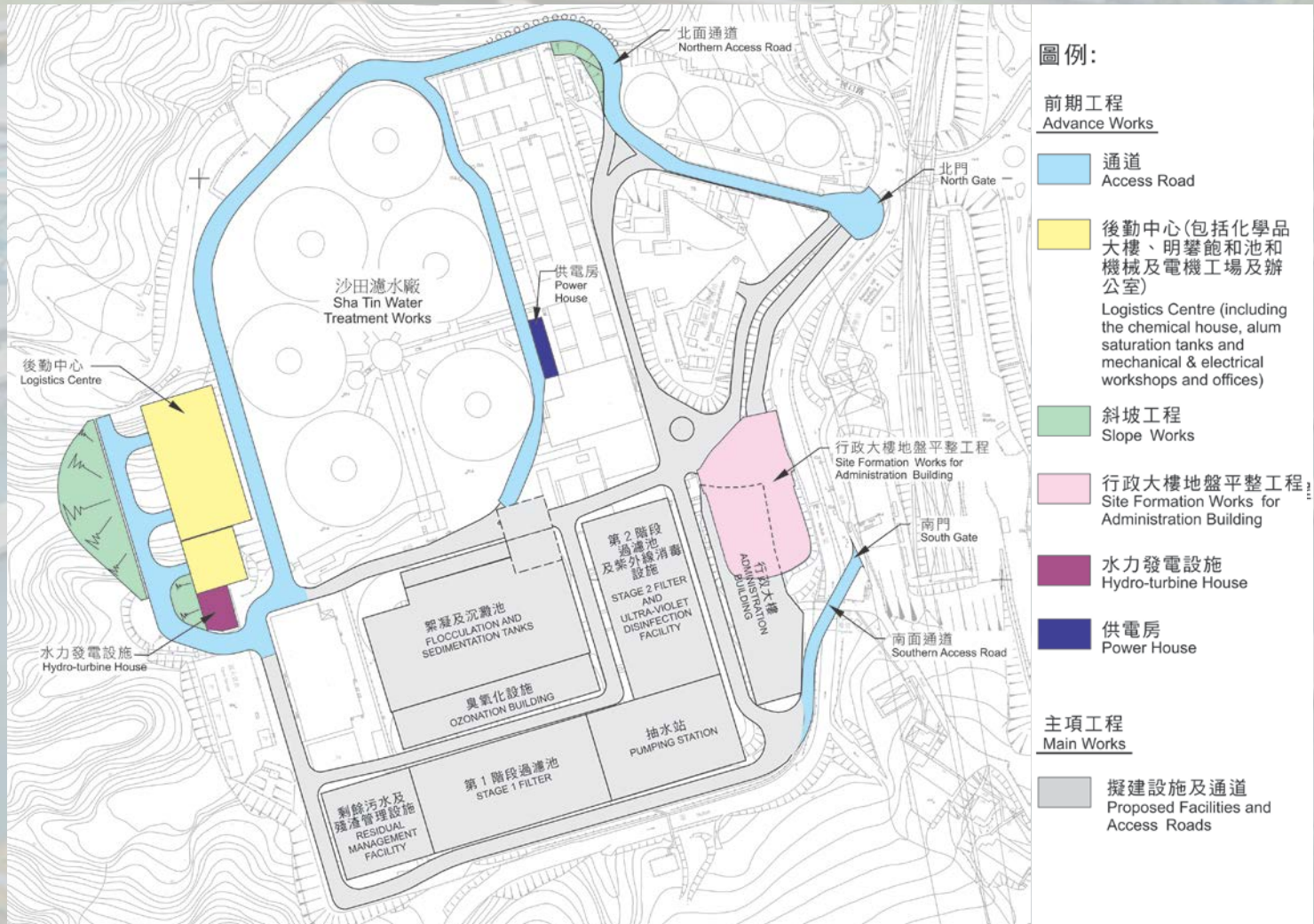
- ❖ 騰出南廠現有土地為日後重置南廠濾水設施之用

To free up the space of the existing South Works for subsequent reprovisioning of the South Works treatment processing units



前期工程

Scope of Advance Works



前期工程

Scope of Advance Works

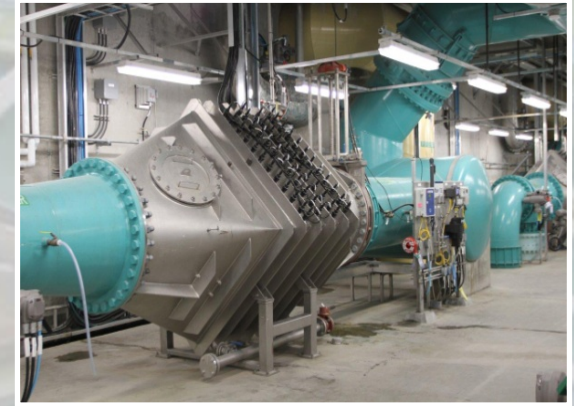
- ❖ 「前期工程」費用約為16億6千萬90萬港元 (按付款當日價格計算)
The project cost of the Advance Work is 1.6609 billion (in MOD Prices)
- ❖ 預計工程展開日期為 2015年8月，工程需時41個月完成
The works is expected to commence in August 2015 and the contract period is 41 months



工程裨益

Benefits of the Works

- ❖ 將南廠濾水量增至每日
550,000立方米
To increase the daily
treatment capacity of the
South Works to 550,000 m³



工程裨益

Benefits of the Works

❖ 先進的濾水設備及技術

Advanced treatment facilities and technologies

➤ 臭氧去除錳、原水氣味及有機物

Ozonation for removal of manganese, organics and taste & odour

➤ 深層生物過濾去除氨

Deep bed biological activated carbon filtration for ammonia removal

➤ 紫外線消毒

UV disinfection

➤ 水力發電供沙田濾水廠使用

Hydro-turbine to generate electricity for use in Sha Tin WTW



主項工程項目

Scope of Main Works

重置南廠設施及行政大樓

Reprovisioning of the facilities of the South Works and the administration building

- ❖ 南廠的濾水設施，抽水站及其他相關措施
South Works treatment processing units, pumping station and associated facilities
- ❖ 行政大樓
Administration building
- ❖ 預計工程需時61個月完成
The construction period is 61 months

施工階段 Stage of works	開始 Start Date	完成 End Date	2015	2016	2017	2018	2019	2020	2021	2022	2023
前期工程 Advance Works	Aug-15	Dec-18	■								
主項工程 Main Works	Aug-17	Jan-23			■						



多謝

Thank you

